

Sanitary Sewer Rehabilitation and Replacement Program
Project No. 8 (SSRRP-8)
WD-04-21 / SC-0402

Rank	Vendor	Identification/ Certification	Total Bid
1	Sancon Technologies, Inc.	OSB	\$812,783
2	Insituform Technologies, Inc.	Undisclosed	\$866,077
3	Southwest Pipeline and Trenchless Corporation	Undisclosed	\$898,194
4	Nu-Line Technologies, LLC	MBE	\$965,589
5	Nor-Cal Pipeline Services	Undisclosed	\$1,014,126
		Average Bid	\$911,354
		Engineer's Estimate	\$800,201

DBE: Disadvantaged Business Enterprise	SBE: Small Business Enterprise
MBE: Minority Business Enterprise	VSBE: Veteran-owned Small Business Enterprise
MIC: Microbusiness	WBE: Women-owned Business Enterprise
OSB: California Office of Small Business	

The Notice Inviting Bids (NIB) document was made available from the Purchasing Division website at <https://www.longbeach.gov/finance/business-info/purchasing-division/>.

- 161 potential vendors were notified of this opportunity
- 40 prospective bidders downloaded the Bid document

An NIB announcement was also included in the City's Purchasing Division's weekly update of Open Bid Opportunities, which is sent to 38 local, minority-owned, and women-owned business groups.

- 5 bids were received on October 19, 2021 (see above matrix)

Local Business Outreach

In an effort to align with the City's outreach goal, Long Beach businesses are encouraged to submit bids for City contracts. The City's Purchasing Division also assists businesses with registering on the PlanetBids database to download plans and specifications.

- 9 Long Beach vendors were notified to submit bids
- 0 downloaded the plans and specifications
- 0 submitted a bid

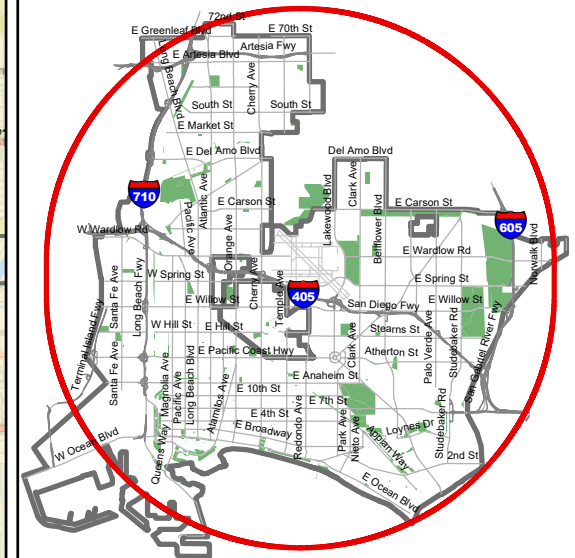


Long Beach Water

Exceptional Water • Exceptional Service

Sanitary Sewer Replacement and Rehabilitation Program, Project 8 SSRRP-8 (SC-0402)

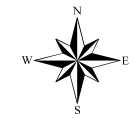
PROJECT LOCATION MAP



Legend

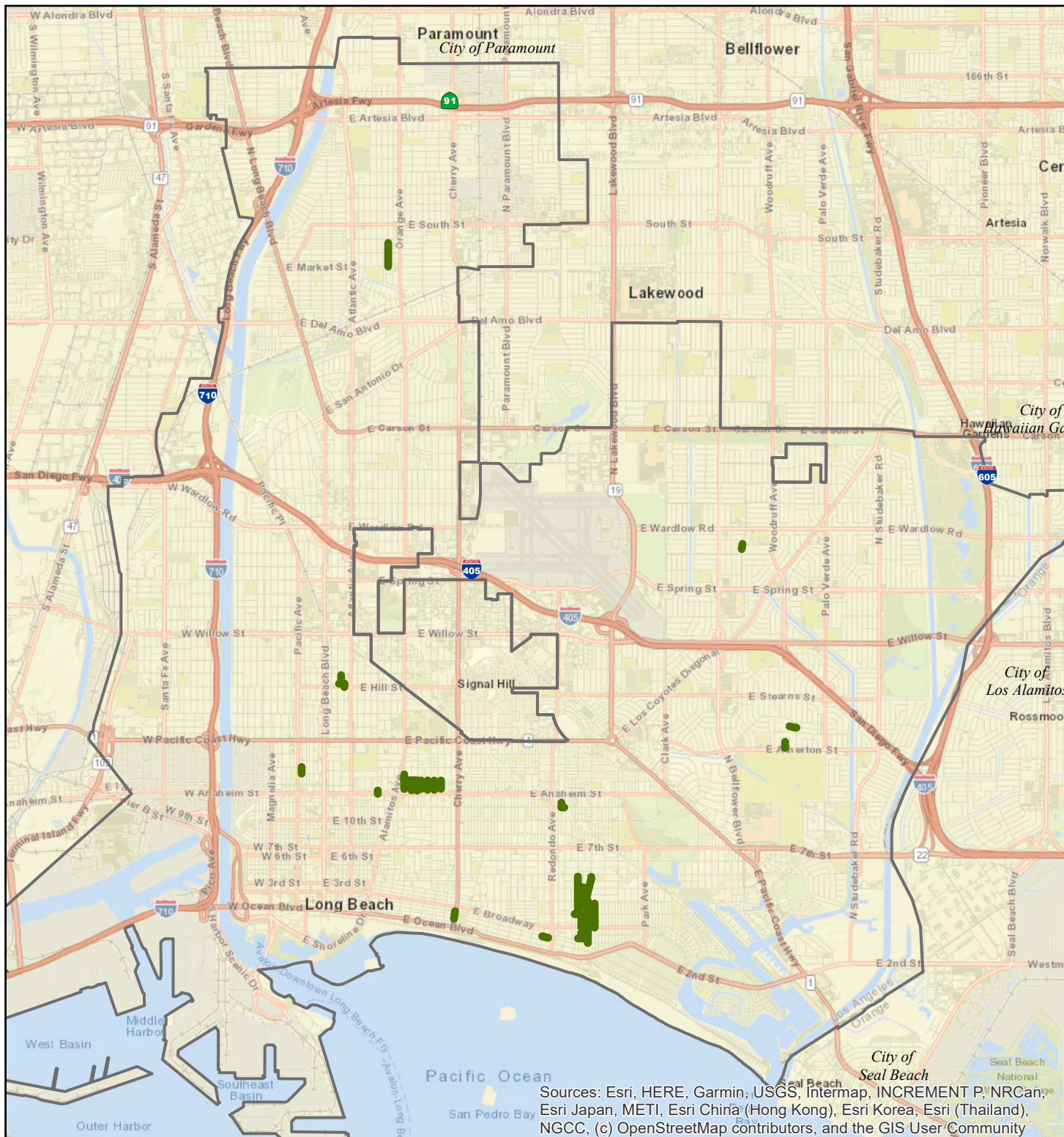
 SSRRP-8 Sewer Pipes

 Boundary



0 3,350 6,700 13,400
Feet

Date: 11/8/2021
Document Path: H:\ACTIVE PROJECTS\SC-0402 SSRRP-8\4.0 Board Letters\draft\BoardLtr_Map_SC-0402 (10.5).mxd



Sources: Esri, HERE, Garmin, USGS, Intermap, INCREMENT P, NRCan, Esri Japan, METI, Esri China (Hong Kong), Esri Korea, Esri (Thailand), NGCC, (c) OpenStreetMap contributors, and the GIS User Community