

## **C-12**

October 19, 2021

HONORABLE MAYOR AND CITY COUNCIL  
City of Long Beach  
California

### **RECOMMENDATION:**

Authorize the City Manager, or designee, to execute a quitclaim deed to release a sewer easement to Long Beach Community College District, a California public corporation, the owner of the property at 1305 East Pacific Coast Highway, recordation document 92-2092604; and,

Authorize the City Manager, or designee, to accept an easement deed from Long Beach Community College District, a California public corporation, the owner of the property at 1305 East Pacific Coast Highway, for the installation of public utilities. (District 6)

### **DISCUSSION**

The Long Beach Community College District is the owner of the property at 1305 East Pacific Coast Highway, and is constructing a new three-story concrete cast-in-place parking structure (new parking structure) at its Pacific Coast Campus. The City currently holds an easement for a sewer line running through the center of the proposed new parking structure footprint (Attachment A). The sewer plans for the new parking structure include a reroute of this sewer line to the north of the existing sewer line and north of the new parking structure (Attachment B). The existing sewer line has been abandoned in accordance with the requirements of the Long Beach Water Department. In consideration of the sewer line abandonment and to accomplish the necessary sewer line relocation, the Department of Public Works is requesting authority to quitclaim the abandoned sewer line back to Long Beach Community College District and accept a new easement deed for the relocated sewer line.

### **CEQA Compliance**

City staff conducted a review of the affected agencies and there were no objections to the proposed quitclaim and easement. In conformance with the California Environmental Quality Act (CEQA), the Final Supplemental Environmental Impact Plan for Long Beach Community College District 2041 Facilities Master Plan was issued in February 2019.

This matter was reviewed by Deputy City Attorney Erin Weesner-McKinley and Budget Management Officer Rhutu Amin Gharib on September 13, 2021.

TIMING CONSIDERATIONS

City Council action on this matter is not time critical.

FISCAL IMPACT

A quitclaim fee in the amount of \$3,313 and an easement processing fee of \$3,313 were deposited in the General Fund Group in the Public Works Department. This recommendation has no staffing impact beyond the normal budgeted scope of duties and is consistent with existing City Council priorities. There is no local job impact associated with this recommendation.

**SUGGESTED ACTION:**

Approve recommendation.

Respectfully submitted,



ERIC LOPEZ  
DIRECTOR OF PUBLIC WORKS

APPROVED:

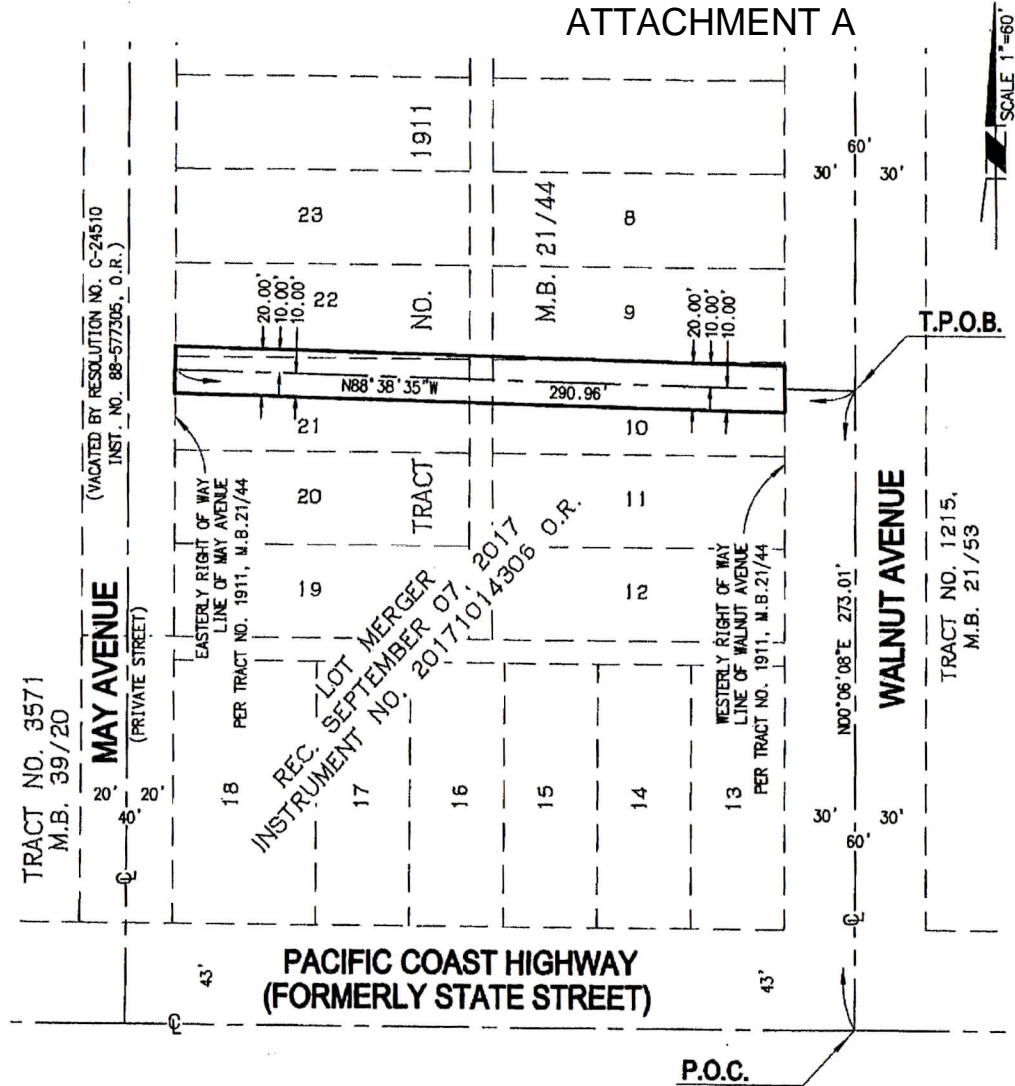


THOMAS B. MODICA  
CITY MANAGER

CB:EL:JH:BP:sdj:ll

ATTACHMENTS: A – QUITCLAIM SKETCH  
B – EASEMENT SKETCH

# ATTACHMENT A



**SKETCH NO. 834E**  
**SKETCH SHOWING AN EASEMENT FOR**  
**SEWER PURPOSES OVER A PORTION**  
**OF LOTS 9, 10, 21, AND 22 OF TRACT**  
**NUMBER 1911**

**DEPARTMENT OF PUBLIC WORKS**  
**ENGINEERING BUREAU**  
**CITY OF LONG BEACH, CALIFORNIA**

SCALE 1"=60'

