

MAC Report

June 2021



SUBMITTED BY THE MARINE BUREAU



TABLE OF CONTENTS

1. Marinas and Waterways
2. Beaches and Waterways
3. Marine Maintenance Work Order Graphs
4. Pump Out Inspection Report
5. Tide Table



MARINAS AND WATERWAYS

Accomplishments

- ❖ Staff has completed bright work on Boathouse Lane.
- ❖ Staff has completed installing pony gates in Basin 2.
- ❖ Staff installed new mirrors in all boat owner's restroom's inside of Shoreline Marina.
- ❖ Staff restriped/stenciled Permit Parking on Mole Road lot.
- ❖ Staff painted all bright work on Mole Road including all red, yellow, green and blue curbs and street & gangway ballards.
- ❖ Staff changed color scheme on all backflows for gangways and bathrooms on Mole road to Marina Blue.
- ❖ Staff installed backflow to B-4 Alfredos which did not have water supply. The backflow was found to be missing on Ocean Blvd and lines were buried.



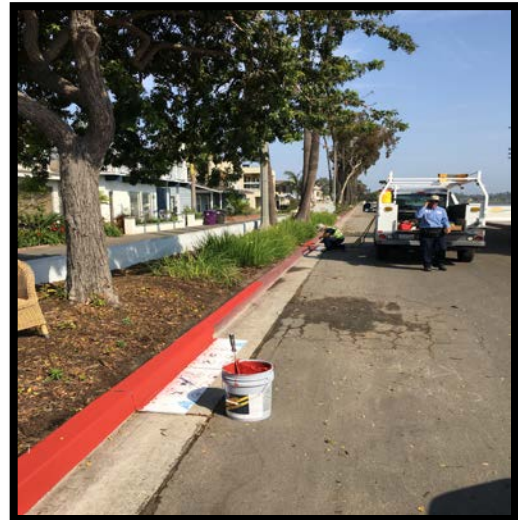
Projects in the works

- ❖ Staff is in the process of replacing all the damaged and missing signs throughout the Long Beach Shoreline Marina. Staff has already replaced all the "Gangway" and "No Visitor" signs. 90% completed
- ❖ Staff is in the process of retrofitting the existing twelve (12) booster pumps from a wet system to a dry fire suppression system in the Long Beach Shoreline Marina. 50% completed
- ❖ Staff is in the process of making improvements to the Alamitos Bay Marina office including: painting the interior of the building. 50% completed
- ❖ Staff is in the process of inspecting and tightening all the loose fingers throughout the Long Beach Shoreline Marina. 40% completed
- ❖ Staff is in the process of inspecting and replacing all the damaged gangway water supply lines throughout Long Beach Shoreline Marina, as needed. 45% completed



MARINAS AND WATERWAYS

- ❖ Staff is in the process of repairing the restroom plumbing throughout Long Beach Shoreline Marina. 35% completed
- ❖ Staff is in the process of repairing concrete fingers throughout Long Beach Shoreline Marina. 10% completed
- ❖ Staff is in the process of replacing all electrical components (breakers, receptacles, etc.) inside the pedestals located throughout Shoreline & Rainbow Harbor Marina's. 20% completed
- ❖ Staff is in the process of replacing exterior doors at the Belmont Pool office. 50% completed
- ❖ Staff is in the process of installing two (2) new power pedestals on long dock North. 50% completed
- ❖ Staff is in the process of fabricating new fencing at boatowner's restroom D-6. 50% completed
- ❖ Staff is in the process of installing Teflon cart stops in Basin 1,2,3 and 4 95% completed
- ❖ Staff is in the process of painting memorial benches in ABM. 35% completed
- ❖ Staff is in the process of installing two isolation valves for all 31 Gangway's in Shoreline Marina. 5% completed
- ❖ Staff is in the process of replacing old and adding where needed "Boat owner parking only" signs as well as installing all new Bike route signs in the City. 85% completed
- ❖ Staff is in the process of installing pony gates throughout Basin 3. 20% completed
- ❖ Staff is in the process of installing two isolation valves for all 33 Gangway's in Shoreline Marina. 70% completed
- ❖ Staff is in the process of replacing old and adding where needed "Boat owner parking only" signs as well as installing all new Bike route signs on Mole Road Lot. 95% completed
- ❖ Staff is currently preparing and painting all trash enclosure doors on Mole road lot. 20% completed



MARINAS AND WATERWAYS

- ❖ Staff is in the process of painting all curbs and poles in Marine Stadium. 60% complete
- ❖ Staff is in the process of repairing seawall on Bayshore. 45% complete
- ❖ Staff is in the process of replacing gale lights at Lifeguard Station 21. 75% complete
- ❖ Staff is currently in the process of retrofitting all pedestals inside of Rainbow Harbor Marina (SHM 1,2,3,4 docks 8 & 9) 25% complete
- ❖ Staff is currently in the process of painting all benches and trash receptacles in Bixby annex park to match Bluff Park. 75% complete

BEACHES AND WATERWAYS

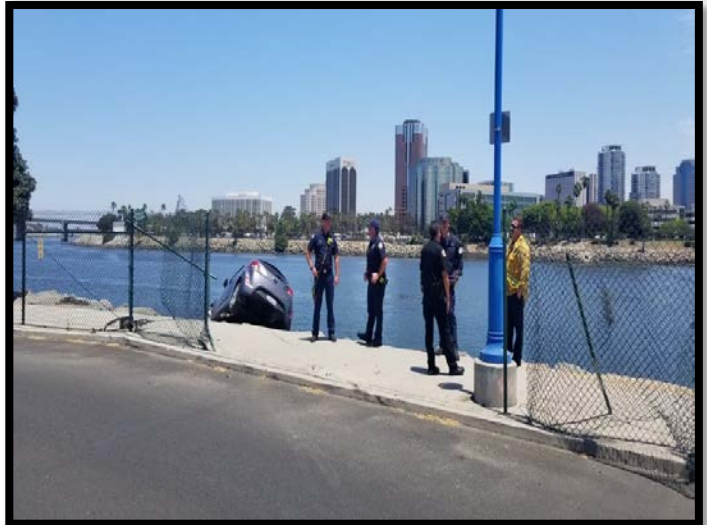
Accomplishments

- ❖ Beach Maintenance staff removed over 98 tons of trash and debris from the beaches and inner bays.
- ❖ Beach Maintenance staff removed trash and debris from the beach waterline.
- ❖ Beach Maintenance staff serviced 250 trash receptacles during the month of June.
- ❖ Beach Maintenance staff built up and maintained the berm on the East Peninsula beach between 62nd – 72nd place and along the bayside.
- ❖ Beach Maintenance staff swept the bike/pedestrian path.
- ❖ Beach Maintenance staff conducted weekly cleanups of several homeless encampments throughout the beach areas.
- ❖ Beach Maintenance staff raked and cleaned throughout beach areas.
- ❖ Beach Maintenance staff placed additional trash cans to prepare for summer crowds.
- ❖ Beach Maintenance staff planted fan palms in Basin 3.
- ❖ Beach Maintenance staff replaced 2" backflow in median at Ocean and Santa Ana.
- ❖ Beach Maintenance reclaimed water inspections at Colorado Lagoon, Alamitos Heights Park, and Monrovia Park.
- ❖ Queensway Bay staff conducted a cleaning of all 60 basket filters in the Rainbow Lagoon; six days per week, twice per day. Staff replaces and cleans all 60 baskets once a month.
- ❖ Queensway Bay staff conducted daily removal of water borne debris and algae in the Rainbow Lagoon, Rainbow Harbor Marina and Long Beach Shoreline Marina using hand nets and a small skimmer boat.
- ❖ Queensway Staff worked with contracted dive team to inspect underwater fill tunnel under Shoreline Drive and 8" fill pipe.
- ❖ Queensway Bay staff removed trash from docks, three times per week.



BEACHES AND WATERWAYS

- ❖ Queensway Bay staff conducted daily cleaning and maintenance of all trash skimmers on the docks, seven days per week.
- ❖ Queensway Bay staff conducted monthly inspections on all docks throughout Rainbow Harbor Marina.
- ❖ Queensway Bay staff serviced all sewage pumps on the commercial docks.
- ❖ Queensway Bay staff conducted weekly encampment posting and cleanups.
- ❖ Queensway Bay staff cleaned and sanitized the public elevator near the bird cage.
- ❖ Queensway Bay staff completed 129 work order and 6 Go Long Beach request for the month of June.
- ❖ Queensway Bay staff coordinated the fence replacement at South Shore Launch Ramp.
- ❖ Queensway Bay staff completed approximately 100' of drainage grating at South Shore Launch Ramp.
- ❖ Queensway Bay staff repaired trip hazards in the pavers located throughout the Esplanade.
- ❖ Queensway Bay staff installed a Mobi-Mat on the beach for ADA access for Pride Lifeguard Tower event.
- ❖ Queensway Bay staff replaced rubber corner bumper on Dock 6.
- ❖ Queensway Bay staff conducted daily graffiti removal of the entire Rainbow Harbor area, including the Queensway bridge bike path and the Pier Point parking lot.
- ❖ Queensway Bay staff painted the curbs in the Pier Point parking lot.
- ❖ Queensway Bay staff performed routine maintenance on the Wave and Dolphin Fountain.
- ❖ Queensway Bay staff conducted routine maintenance on the Wave Fountain filter pumps.
- ❖ Queensway Bay staff power washed the exterior of the Wave Fountain bi-weekly.



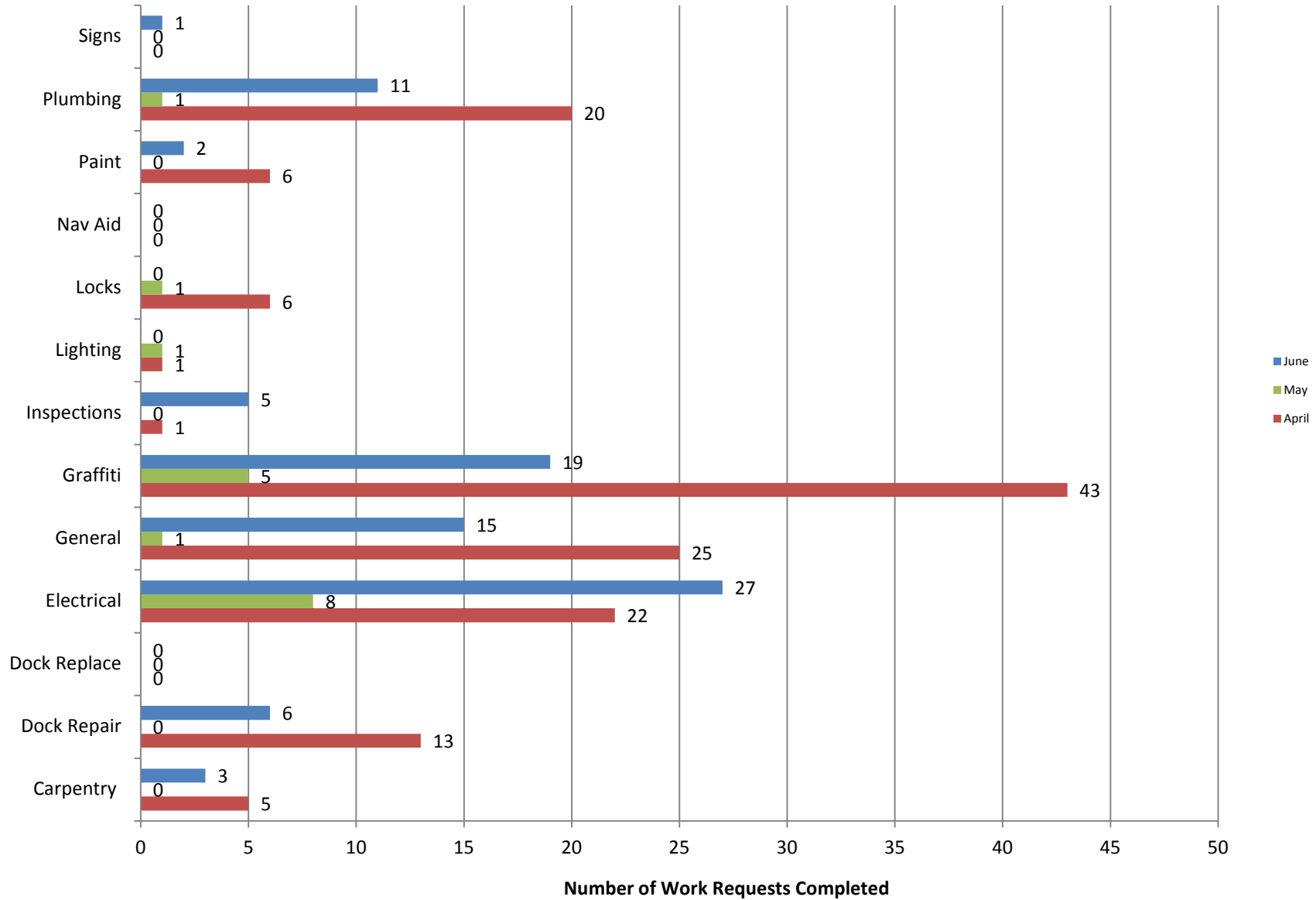
BEACHES AND WATERWAYS

Projects in the works

- ❖ Beach Maintenance staff is continuing the process of rebuilding sections of the peninsula where erosion occurs.

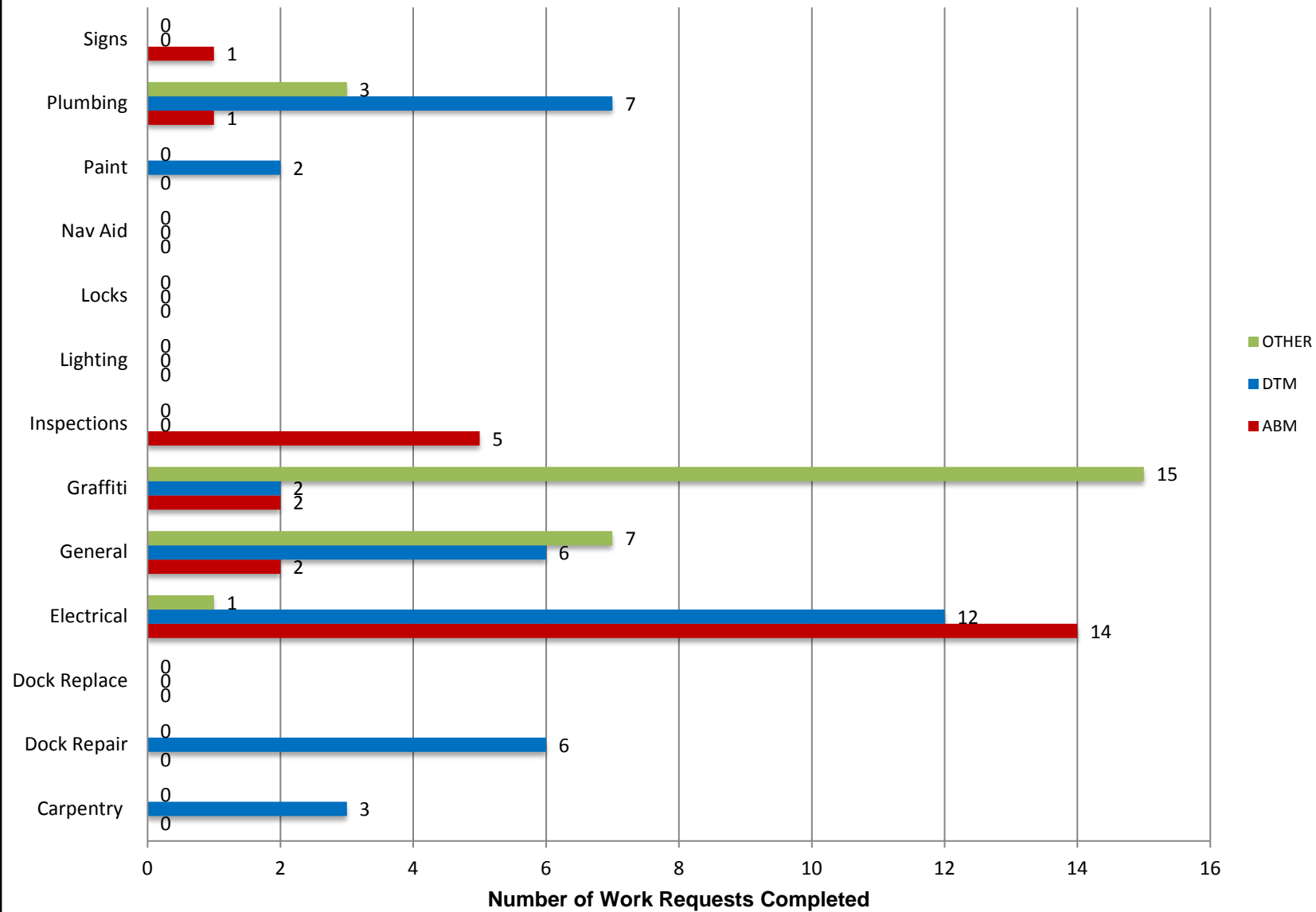
Marine Maintenance

Work Request Completed by Month



Marine Maintenance

Work Requests Completed by Location



PUMPOUT INSPECTION REPORT

| Pump Out Location | Inspection Date | | | |
|-------------------------|-----------------|----------|----------|----------|
| | 6/03/21 | 06/10/21 | 06/17/21 | 06/24/21 |
| Gwy A, A | W | W | W | W |
| Gwy A, B | W | W | W | W |
| Parker's Public Dock, A | W | W | W | NW |
| Parker's Public Dock, B | W | W | W | W |
| Parker's Public Dock, C | W | W | W | W |
| Dock 9 | W | W | NW | NW |
| Basin 6 South | W | W | W | W |
| Davie's Launch Ramp, A | NW | NW | NW | NW |
| Station 31, A | W | W | W | W |
| Station 31, B | W | W | W | W |
| Station 21 | W | W | W | W |
| Basin 1, Gwy 2 | W | W | W | W |
| Basin 1, Gwy 4 | W | W | W | W |
| Basin 2, Gwy 8 | W | W | W | W |
| Basin 2, Gwy 11 | W | W | W | W |
| Basin 3, Gwy 16 | W | W | W | W |
| Basin 3, Gwy 19 | W | W | W | W |
| Basin 4, Gwy 28 | W | W | W | W |
| Basin 4, Gwy 31 | W | W | W | W |
| Basin 5, Gwy 33 | W | W | W | W |
| Basin 5, Gwy 34 | W | W | W | W |

| KEY |
|----------------------|
| W = Working |
| NW = Not Working |
| N/A = Not Applicable |

California, Los Angeles, Long Beach, Inner Harbor

July 2021

N 33° 46.3' / W 118° 12.6'

