

We Create Community



Citywide Tree Plantings Celebrate Arbor Day



Clockwise from left: Councilwoman Cindy Allen and PRM staff at Bixby Park, Partners of Parks Director Trink Rowell and PRM Director Brent Dennis at Pan American Park, Brent Dennis, Grounds Superintendent Kelly Parkins with staff at Vets Park, Brent Dennis, Kelly Parkins and Councilwoman Dr. Suely Saro Veterans Park, Councilwoman Stacy Mungo and daughter at Heartwell Park.



Long Beach Parks, Recreation and Marine celebrated Arbor Day in April with tree planting events across the City. According to the Arbor Day Foundation, “The simple act of planting a tree represents a belief that the tree will grow to provide clean air and water, cooling shade, and habitat for wildlife, healthier communities and endless natural beauty.”

“As a parks and recreation professional and landscape architect, Arbor Day is my favorite holiday because it celebrates nature and encourages people to plant trees”, said Brent Dennis, Director of Long Beach Parks, Recreation and Marine.

Grounds Maintenance staff selected native tree species based on each park’s tree inventory such as Camphor, Oak, Pine, Jacaranda and Chinese Pistache, and considered the

ability of the tree to thrive in the current warmer, drier environmental conditions.

Trees were planted at Chavez, Drake, Seaside, Bixby, Recreation, Heartwell, Veterans and Pan American Park and the DeForest Wetlands.

Several City Council offices participated including Councilwoman Cindy Allen at Bixby Park, Councilwoman Suzie Price at Recreation Park, Councilwoman Stacy Mungo at Heartwell Park, Councilwoman Dr. Suely Saro at Veterans Park and Councilmember Al Austin at DeForest Wetlands. Community organizations included the Washington Neighborhood Association at Chavez Park, the Conservation Corps Long Beach at DeForest Wetlands and Partners of Parks at Pan American Park.



*Brent Dennis
Director, Long Beach Parks,
Recreation & Marine and ACS*

I am so enjoying the afterglow of the month of April when we were able to celebrate both Earth Day and Arbor Day with the planting of hundreds of new native trees out in our parks. As this publication suggests, our amazing Parks, Recreation, Marine and Animal Care Services team find opportunities to create community every day. Partnerships are beginning to flourish once again as we advance out of the pandemic and our local economy begins to rebound.

Our Park Planning & Partnerships Bureau is instrumental in seeking, establishing, and expanding the positive benefits that community collaborations can yield. While this important bureau will be undergoing leadership changes this month, I have a world of confidence that the many initiatives underway or being contemplated will evolve into significant mutually beneficial outcomes for our department and community-minded partners. I want to pause and wish Meredith Reynolds the greatest of successes as she turns over the PP&P leadership reigns over to Nancy Villaseñor this month and returns to the City Manager's Office to oversee the City of Long Beach's Economic Recovery Act funded programs. Nancy is joining PRM from Public Works and will begin leading Park Planning & Partnerships on May 24th.

I enjoyed finally participating in my first in-person (physically distanced & masked) All Hands meeting of our Animal Care Services Bureau. It was encouraging to begin developing a more personal connection to so many of our hardworking, passionate ACS team members. They seemed to share my excitement of our PRM Admin Office's desire to launch an office foster animal program. Fostering a dog or cat can lead to an adoption over time and we want to provide a positive and successful model in support of ACS's strategic plan initiatives.

I cannot think of a busier time of the year for our Community Recreation Services team as they are focused on planning and rolling out the return of so many programs for summer. I'm loving their incorporation of both virtual and in-person camps and recreational activities as we move into the 'new normal'. As the local health orders change to allow for more latitude in group activities and special events, it promises the return of popular gatherings like Movies in the Parks and concerts.

I couldn't be prouder of our parks and beach maintenance team this year as they have managed to keep their focus upon essential duties and performing them safely and effectively. Our parks look greener and cleaner and the beaches and marinas are amazing this season. Everyone is thankful to finally be back on our athletic fields and courts to enjoy sports practices and competitions after such a long health order-governed hiatus.

Possibly our top performing team works tirelessly behind the scenes. Business Operations has advanced our department budget for next fiscal year while maintaining a watchful eye on our current fiscal year's performance, fired up the hiring engine as we are needing to welcome back scores of seasonal staff, and preparing important presentations for our PRM fee recommendations to City Council.

As we sail towards Memorial Day at the end of May, I can truly say how memorable this past year has been for our entire Parks, Recreation, Marine and Animal Care Services team. I want to close by remembering the three precious friends we lost this past year while they were actively serving the Long Beach community: Reynaldo Lagarde, Rosemarie Salinas, and Ricky Rin. May we remember the joy they brought to many.

El Dorado Nature Center Naturalist Notes: Turtle Time!



unusual courtship routines can be seen in the lakes and will last through May.

If you've visited the El Dorado Nature Center trails recently you may be noticing odd behavior from our turtles. Mating season has started. Their

Courtship Behavior:

- Males and females swim around each other bumping, nudging and biting.
- Bubbles are released when females approve of certain movements, so you may notice the turtles extending their heads out of the water for air.
- When the male finds a partner he wants to impress, he will float in front of her and wiggle his front claws, tickling her face.

- If she approves mating will begin.

- The female turtle then comes onto land and digs a hole in the soil to lay her eggs. Eggs can take 2-3 months to hatch.

If you notice a turtle on the trail DO NOT DISTURB her.

Please report the location of the turtle to the Front Counter and staff and volunteers will monitor.

Reservation Permits For Picnic Groves and Band Shells to Resume



PRM will resume the issuance of reservation permits for park picnic groves and band shells on Monday, May 24. The reserved outdoor sites include El Dorado Park West picnic areas and Willow Grove site, bandshells at Recreation and Bixby Park, the Chavez Park Amphitheater and picnic groves at El Dorado Regional Park.

Patrons to apply for Picnic permits at **El Dorado Park West**, and **bandshells at Bixby, Chavez, and Recreation Parks** at the PRM Reservations Office, 2670 N. Studebaker Road, Monday - Friday from 8 a.m. to 5 p.m. The last appointment slot is at 4 p.m.

- The permit application and rule forms are available online: www.longbeach.gov/park/park-and-facilities/directory/reservation-forms/ or a representative can email the forms to the customer.
- Permits must be requested at least two weeks prior to event.
- Forms and driver's license can be emailed to PRM-Info@longbeach.gov or faxed to 562-570-3113. Customers will be contacted to complete the application process and set up same day online payment for the customer once the permit created and approved. If not paid by end of day the permit will be canceled.
- In Person assistance is available at the PRM Reservations Office, 2670 N. Studebaker Road. Visit <https://calendly.com/reservation-registration-office/permit-to-gather> to make an appointment Monday - Friday from 8 a.m. to 4 p.m.
- Reserved picnic site information and fee can be found at: www.longbeach.gov/park/park-and-facilities/directory/facility-reservations/
- Customers will be temperature checked
- Only one appointment will be seen at a time with a 30-minute appointment time (time can be adjusted based on transaction time)

El Dorado Regional Park and Nature Center, 7550 E. Spring Street

- Applications are available in person at the Visitors Center Tuesday- Sunday from 8:30 a.m.- 4 p.m.
- Applications can be turned in at the same time, and will be processed the following business day. A staff member will contact the patron to complete the application.
- Permits must be requested at least 2 weeks prior to event.

The permit application and rule forms are available online: www.longbeach.gov/park/park-and-facilities/directory/reservation-forms/ or representative can email the forms to the customer.

Reserved picnic site information and fees can be found at: www.longbeach.gov/park/park-and-facilities/directory/facility-reservations/.



COVID-19 Health Protocols must be followed for Picnic Grove and Band Shell Reservations.

For information about site amenities and fees, visit www.longbeach.gov/park/park-and-facilities/directory/facility-reservations or call 562.570.3111. Call 562.570.1750 to reserve the areas in El Dorado Regional Park.

COVID-19 Health Protocols
for Picnic Grove and Band Shell Reservations:
<https://bit.ly/3bohsKi>

Like us on Facebook: [Facebook.com/LongBeachParks](https://www.facebook.com/LongBeachParks)

Free Summer Hybrid Camp and Mobile Recess Program For Youth

PRM will offer a free hybrid (virtual and in-person) summer camp June 21 through August 27 for youth ages 5 to 14. Campers will enjoy fun from the comfort of their home three days a week and in-person two days a week at Heartwell Park. This innovative program accommodates a large number of participants in a safe and secure environment as Long Beach continues to positively trend out of the pandemic and into a new normal.



Hybrid Camp

The Hybrid Camp will take place Monday, Wednesday and Friday from 10 a.m. to 4 p.m. and the in-person recreation will take place Tuesdays and Thursdays from 10 a.m. to 4 p.m. at Heartwell Park, located at 5801 E. Parkcrest St. Campers will enjoy arts and crafts, games and physical fitness fun on both virtual and in-person camp days. Register at LBParks.org for one

week or multiple weeks. Campers must enroll in the Virtual Camp to participate in the in-person recreation and must provide their own computer for the virtual portion. Participation in the in-person portion is optional.

Mobile Recess Program

The free Mobile Recess Program will continue from June 21 through August 27, Monday through Friday, from 1:30 to 4:30 p.m. PRM staff drive trucks loaded with supplies and equipment to neighborhood streets providing recreation activities for youth ages 5 through 14. Streets are blocked off for safety and kids participate in physical fitness and arts and crafts activities. Advance sign-ups are required at LBParks.org. Mobile Recess will be held at the following locations:

Monday & Wednesday Sites

1:30 to 4:30 p.m.

- Hellman Street between Orange Avenue and Cerritos Avenue
- 11th Street between Dawson Avenue and St. Louis Avenue
- 67th Way between Orcutt Avenue and Muriel Avenue

Tuesday & Thursday Sites

1:30 to 4:30 p.m.

- 17th Street between Henderson Avenue and Chestnut Avenue
- 8th Street between Gladys Avenue and Freeman Avenue
- Jackson Street Between Orange Avenue and Walnut Avenue



Friday Sites

1:30 to 4:30 p.m.

- 23rd Street between Cedar Avenue and Chestnut Avenue
- Parade Street between Harbor Avenue and Fashion Avenue
- Burton Chace Park, located at Market Street and Dairy Avenue

To ensure the safety of all participants and staff, In-Person Recreation and the Mobile Recess Program will adhere to COVID-19 safety protocols.

Community Mural Restored Thanks To Mural Arts Staff



Above: the park mural before Esaul and Romo began their project of removing graffiti. Right: the completed staff restoration of the community mural defaced by tagging.



Mural Arts Staff Esaul Romo and Viranga Wettewa are amazing. They removed gang graffiti at Seaside, Orizaba Tunnel and Gumbiner Park on Saturday, May 1 ! What a May Day.

Thank you Esaul and Viranga for working hard to keep our parks and community murals looking beautiful.

Park Planning and Partnership Bureau Moves Forward With New Leadership



Park Planning and Partnerships Bureau Meredith Reynolds is the new Special Deputy City Manager for Recovery, responsible for leading the City's efforts in implementing \$234 million Long Beach Recovery Act to fund various economic, public health and fiscal initiatives impacted by the COVID-19 pandemic.

She will coordinate City Department programs, outreach and communications, grant applications, and the delivery of funds and services to Long Beach residents, businesses and workers impacted by the pandemic.

Meredith has led the Parks, Recreation and Marine (PRM) Park Planning and Partnership Bureau since its formation in 2019. Prior to that she served as PRM's Park Development Officer. She brings 15 years of experience in community and staff engagement, user-centered design, partnerships, strategic planning, grant writing and budgeting, land use planning, and project management in the fields of community services, parks and recreation, sustainability, and public sector management.

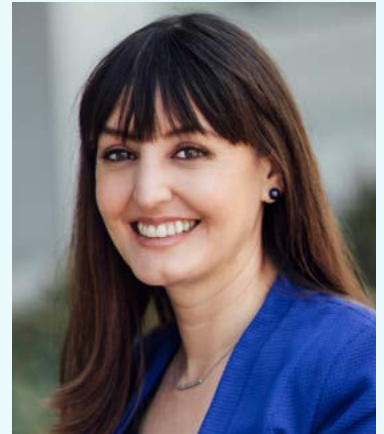
Ms. Reynolds holds a master's degree in Public Policy and Management from Carnegie Mellon University and a bachelor's degree in Public Administration with a minor in Organizational Communication from California State University, Chico.

Nancy Villaseñor, currently serving as Capital Projects Coordinator for the Department of Public Works, will take over as Park Planning and Partnerships Bureau Manager once Ms. Reynolds begins her new role as Special Deputy City Manager for Recovery on May 24.

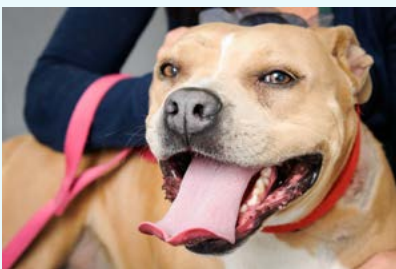
Nancy will continue the Bureau's focus on engagement and partnerships that support PRM programs, park planning and capital project coordination, developing new grant and revenue programs and manage PRM contracts and agreements.

Nancy has 14 years of experience with the City of Long Beach. She has a background in planning and community engagement and strong connections with City's Development Services planning team to be able to handle park land issues. Her experience working on capital programs and grant writing will further the Bureau's goals. She is a collaborative leader who worked on the City Liveability Initiative and is an Equity Champion working on the City's Racial Equity and Reconciliation Initiative and will be a great asset for PRM.

She holds a Bachelor of Arts degree in History and a Master of Arts in Urban Planning from the University of California, Los Angeles.



Long Beach Animal Care Services Is Open By Appointment Only



Long Beach Animal Care Services (LBACS) is currently OPEN BY APPOINTMENT ONLY.

To make an appointment to adopt or foster a pet, please email PetAdopt@longbeach.gov or call 562.570.4925. For all

other services, please email AnimalCare@longbeach.gov or call 562.570.7387.

Appointments may be made during the following hours only:

10 a.m. to 5 p.m. Wednesdays through Fridays 10 a.m. to 3:30 p.m. Saturdays and Sundays.

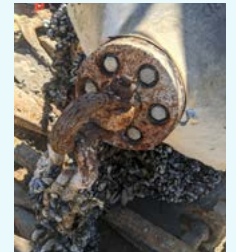


Like us on Instagram: [instagram.com/longbeachparks_rec](https://www.instagram.com/longbeachparks_rec)

Money Saving Idea Improves Pier Avenue



L to R: A buoy fender is detached from the pier with significant mussel growth attached, a newly restored fender buoy protects the pier, a worn and damaged buoy before component parts have been replaced



Marine Maintenance Supervisor Kelly Armstrong proposed the restoration of worn and damaged fender/buoys at Pine Avenue Pier, that prevent vessels from banging into piers and harming both the boat and the

pier. Kelly found a vendor that shipped individual parts which he used to replace damaged components, saving over \$39,000 and extending the lifespan of the buoys an additional ten years.

Restriped and Revitalized

By the Numbers

Before:



After:



Maintenance Operations staff Dave Hackett and Carl Lindsay recently restriped the Orizaba Park parking lot to improve both safety and esthetics.

Maintenance Operations Bureau

Community Service Workers Program

Attendance figures for the month of April 2021

Number of persons enrolled in the program for April:47

Number of hours worked at El Dorado Park areas:..... 294
(Litter pickup, custodial and facility sites including Tree Farm and Night Crew)

Number of hours worked at Los Cerritos Wetlands:.... 686
(Litter pickup and vegetation removal of Sims Pond, Golden Shore, Colorado Lagoon and other various Wetlands)

Number of hours worked at special clean-ups:..... 40

Total number CSW hours for April:1,020

Work orders completed:314

Restrooms cleaned on a daily basis bureau wide: 172

Facilities and Gymnasiums cleaned and stocked daily: .28

Park acres maintained:

Park turf814

Park landscape2310

Water Use

MOB General Fund Water report for April

Parks Potable.....22,302 ccf..... \$99,313

Parks Reclaimed.....46,883 ccf..... \$105,554



Congratulations to Clerk Typist III Amy Nhoung on being named Employee of the Month for March 2021. Amy has kept the wheels turning for the last ten years at Facility Maintenance. Her incredible multitasking skills during the height of Covid-19 allowed PRM to procure hard-to-get resources like N-95 masks, disinfecting chemicals, and toilet paper that kept City facilities and our homeless shelter operational. Amy also provided vital information that helped launch the new Go Long Beach APP.

What do you like to do in your free time? Free time – is that really a thing? LOL I'm a busy body so I don't stick to just one thing. I read, write, video game and I'm currently teaching myself how to knit.

What's your biggest work achievement so far? My biggest achievement so far is getting awarded the City Manager's Recognition of Excellence for my help during the COVID-19 pandemic.

What's your own advice that you always follow? Family first. No matter what I'm doing or where I'm at, if my family needs me, I'm there.

What's one small thing that makes your day better? Starbucks Caramel Macchiato... and being able to put a smile on someone's face.

Who inspires you? My son: he's my pride and joy. 😊😊😊

What are you famous for at work? I don't own a car, I don't have a driver's license and I don't know how to drive.

What song is always in your head when you're working? I listen to music based on my mood, so my "work" playlist covers a lot of different genres and I'm always discovering new music.

If you could have a superpower, what would it be? The ability to make multiples of myself so I can get more things done faster (and relax sooner!).

Who would play you in a movie of your life? Lucy Liu.

Using one word, how would you describe your family? Hands down, we are LOVING – and that's true for both my family and my work family.

Would you rather be the best player on a horrible team or the worst player on a great team? I would rather be the worst player on a great team. It's easier to get things done if we all work together.

What is the name of your imaginary boat in the marina? SYREN

Burton W. Chace Park, located at Market Street and Dairy Avenue was the vision of north Long Beach residents, the Eighth City Council District Office and the former Long Beach

Redevelopment Agency North Long Beach Project Area Committee for many years. The area around the park is one of the most population dense in the City and one that lacks sufficient recreational open space.



Ground broke for the small .29-acre park on February 21, 2004. The Eighth District Councilmember at the time, Rob Webb said, "This newest mini park will help the neighborhood and the

community by providing a nearby place for youngsters to play and families to enjoy."

This project transformed an unused site into a mini park that contains benches, turf, trees, playground equipment, a half-court basketball court, and a water play spray feature basketball, area lighting, picnic tables, benches and parking. The park was funded with \$430,000 in City Redevelopment funds.

A Grand Opening Celebration was held on May 7 2005 attended by the Long Beach Redevelopment Agency, District Eight Councilmember Rae Gabelich, community members and Department staff.

About Burton W. Chace

The park is named for Burton W. Chace, who was elected to the Long Beach City Council in 1945 and to his first of three terms as Mayor of Long Beach in 1947.



He was appointed to the Los Angeles County Board of Supervisors in 1953, elected to the office in 1954, and re-elected in 1956, 1960, 1964 and 1968. As County Supervisor, oversaw the construction of the Los Angeles Sports Arena and had a role in making the Coliseum the original home of the Los Angeles Dodgers when the team moved from Brooklyn. He helped to create the Marina del Rey small craft harbor and advocated for decentralizing county offices throughout the Fourth District cities from Long Beach to Ventura. He created a new Department of Beaches and Harbors and improved life-guard service, beach maintenance and beautification efforts.

Calendar

Date	Time	Activity	Location
June 1:		Registration is ongoing for Learn to Swim programs	LBParks.org
June 19	9-11 a.m.	Wetland Warriors Volunteer Clean Up	Golden Shore Reserve
June 21	9 a.m.- 4 p.m.	In Person Youth Summer Camps Begin through August 27	
June 21	10 a.m. - 4 p.m.	Hybrid Camp: Virtual Day	
June 21	1:30-4:30 p.m.	Mobile Recess Program:*	
June 22	10 a.m. - 4 p.m.	Hybrid Camp: In Person Day	Heartwell Park
June 22	1:30-4:30 p.m.	Mobile Recess Program*	
June 23	10 a.m. - 4 p.m.	Hybrid Camp: Virtual Day	
June 23	1:30-4:30 p.m.	Mobile Recess Program*	
June 24	10 a.m. - 4 p.m.	Hybrid Camp: In Person Day	Heartwell Park
June 24	1:30-4:30 p.m.	Mobile Recess Program*	
June 25	10 a.m. - 4 p.m.	Hybrid Camp: Virtual Day	
June 25	1:30-4:30 p.m.	Mobile Recess Program*	
June 28	10 a.m. - 4 p.m.	Hybrid Camp: Virtual Day	
June 28	1:30-4:30 p.m.	Mobile Recess Program*	
June 29	10 a.m. - 4 p.m.	Hybrid Camp: In Person Day	Heartwell Park
June 29	1:30-4:30 p.m.	Mobile Recess Program*	
June 30	10 a.m. - 4 p.m.	Hybrid Camp: Virtual Day	
June 30	1:30-4:30 p.m.	Mobile Recess Program*	

*Visit www.longbeach.gov/park/recreation-programs/free-and-low-cost-youth-programs/mobile-recess/ for locations.

For more information and PRM's Hybrid Camp, visit www.longbeach.gov/park/recreation-programs/free-and-low-cost-youth-programs/hybrid-camp-2021/.



Mobile Recess is offered free of charge for youth ages 5-14



Long Beach Parks, Recreation and Marine

2760 Studebaker Road, Long Beach, CA 90815

Phone: 562.570.3100 Fax: 562.570.3109

www.LBParks.org

CITY OF
LONG BEACH



Follow Parks, Recreation & Marine on Facebook, Twitter and Instagram

Email: LBParks@longbeach.gov

Visit our website at: www.LBParks.org

