

# MAC Report

**March 2021**



**SUBMITTED BY THE MARINE BUREAU**



## TABLE OF CONTENTS

1. Marinas and Waterways
2. Beaches and Waterways
3. Marine Maintenance Work Order Graphs
4. Pump Out Inspection Report
5. Tide Table



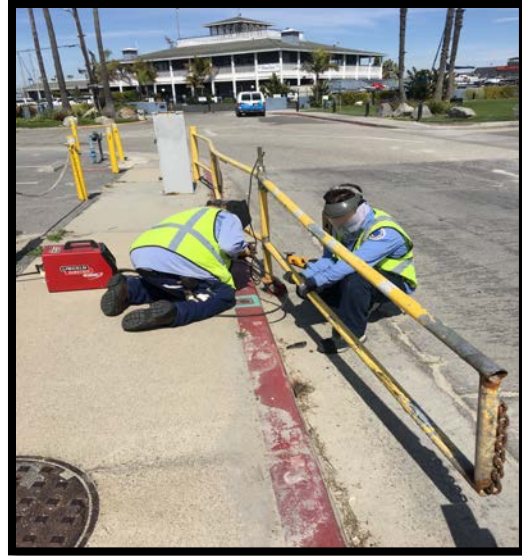
## MARINAS AND WATERWAYS

### Accomplishments

- ✓ Staff is in the process of repairing the gate at B-72.

### Projects in the works

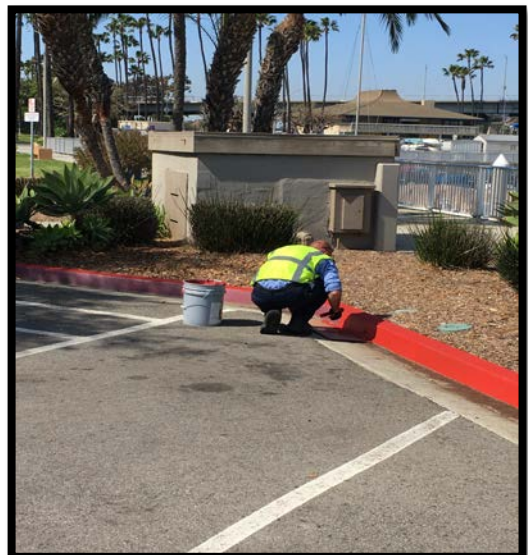
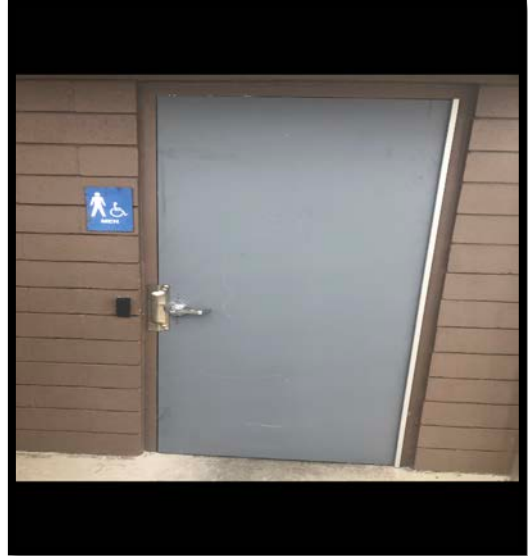
- ❖ Staff is in the process of replacing all the damaged and missing signs throughout the Long Beach Shoreline Marina. Staff has already replaced all the "Gangway" and "No Visitor" signs. 90% completed
- ❖ Staff is in the process of retrofitting the existing twelve (12) booster pumps from a wet system to a dry fire suppression system in the Long Beach Shoreline Marina. 50% completed
- ❖ Staff is in the process of making improvements to the Alamitos Bay Marina office including: painting the interior of the building. 50% completed
- ❖ Staff is in the process of inspecting and tightening all the loose fingers throughout the Long Beach Shoreline Marina. 40% completed
- ❖ Staff is in the process of inspecting and replacing all the damaged gangway water supply lines throughout Long Beach Shoreline Marina, as needed. 45% completed
- ❖ Staff is in the process of repairing the restroom plumbing throughout Long Beach Shoreline Marina. 35% completed
- ❖ Staff is in the process of repairing concrete fingers throughout Long Beach Shoreline Marina. 10% completed
- ❖ Staff is in the process of repairing all damaged concrete behind Spinnaker Bay near the seawall. 10% completed
- ❖ Staff is in the process of replacing all electrical components (breakers, receptacles, etc.) inside the pedestals located throughout Shoreline & Rainbow Harbor Marina's. 20% completed





## MARINAS AND WATERWAYS

- ❖ Staff is in the process of striping the boatowner's parking area throughout Basins 1-3. It is 90% completed
- ❖ Staff is in the process of replacing exterior doors at the Belmont Pool office. 50% completed
- ❖ Staff is in the process of installing two (2) new power pedestals on long dock North. 50% completed
- ❖ Staff is in the process of doing all bright work in Basin's 1,2 & 3. 90% completed
- ❖ Staff is in the process of changing all roller bearings for DTM's gangways. 75% completed
- ❖ Staff is in the process of installing pony gates throughout Basin 2. 10% completed
- ❖ Staff is in the process of fabricating new fencing at boatowner's restroom D-6. 5% completed
- ❖ Staff is in the process of painting curbs throughout Basin 4 parking lot. 75% completed
- ❖ Staff is in process of painting curbs in Mother's Beach parking lot. 50% complete
- ❖ Staff is in the process renovating women's locker room for Marine Patrol. 75% complete



## **BEACHES AND WATERWAYS**

### **Accomplishments**

- ❖ Beach Maintenance staff removed over 96 tons of trash and debris from the beaches and inner bays.
- ❖ Beach Maintenance staff removed trash and debris from the beach waterline.
- ❖ Beach Maintenance staff serviced 200 trash receptacles during the month of March.
- ❖ Beach Maintenance staff built up and maintained the berm on the East Peninsula beach between 62<sup>nd</sup> – 72<sup>nd</sup> place and along the bayside.
- ❖ Beach Maintenance staff swept the bike/pedestrian path.
- ❖ Beach Maintenance staff conducted weekly cleanups of several homeless encampments throughout the beach areas.
- ❖ Beach Maintenance staff planted Daylilies along Marina Drive near Basin 3.
- ❖ Beach Maintenance staff planted Carissa in the planter at the 2<sup>nd</sup> Street library.
- ❖ Beach Maintenance staff planted Phoenix roebelenii palms at Basin 1.
- ❖ Beach Maintenance staff assisted the contractor with irrigation repairs at Alamitos beach.
- ❖ Queensway Bay staff conducted a cleaning of all 60 basket filters in the Rainbow Lagoon; six days per week, twice per day. Staff replaces and cleans all 60 baskets once a month.
- ❖ Queensway Bay staff conducted daily removal of water borne debris and algae in the Rainbow Lagoon, Rainbow Harbor Marina and Long Beach Shoreline Marina using hand nets and a small skimmer boat.
- ❖ Queensway Bay staff repaired a leak in the 8" fill pipe at Rainbow Lagoon.
- ❖ Queensway Bay staff repaired the aerator/diffuser #7.
- ❖ Queensway Bay staff removed trash from docks, three times per week.
- ❖ Queensway Bay staff conducted daily cleaning and maintenance of all trash skimmers on the docks, seven days per week.



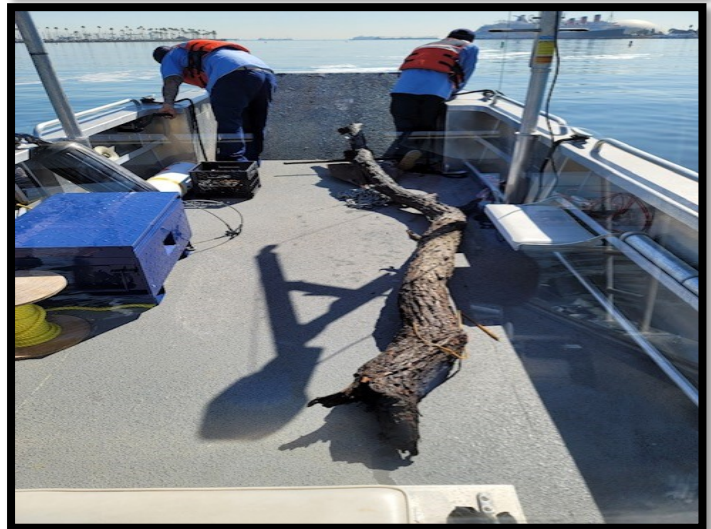


## **BEACHES AND WATERWAYS**

- ❖ Queensway Bay staff conducted monthly inspections on all docks throughout Rainbow Harbor Marina.
- ❖ Queensway Bay staff serviced all sewage pumps on the commercial docks.
- ❖ Queensway Bay staff conducted weekly encampment posting and cleanups.
- ❖ Queensway Bay staff cleaned and sanitized the public elevator near the bird cage.
- ❖ Queensway Bay staff completed 136 work order request and 28 Go Long Beach request for the month of March.
- ❖ Queensway Bay staff worked with Parks electrician to install 24 new landscape LED lights throughout Rainbow Harbor Esplanade.
- ❖ Queensway Bay staff cleaned and painted benches at the Bird Cage.
- ❖ Queensway Bay staff conducted daily graffiti removal of the entire Rainbow Harbor area, including the Queensway bridge bike path and the Pier Point parking lot.
- ❖ Queensway Bay staff performed routine maintenance on the Wave and Dolphin Fountain.
- ❖ Queensway Bay staff conducted routine maintenance on the Wave Fountain filter pumps.
- ❖ Queensway Bay staff power washed the exterior of the Wave Fountain bi-weekly.

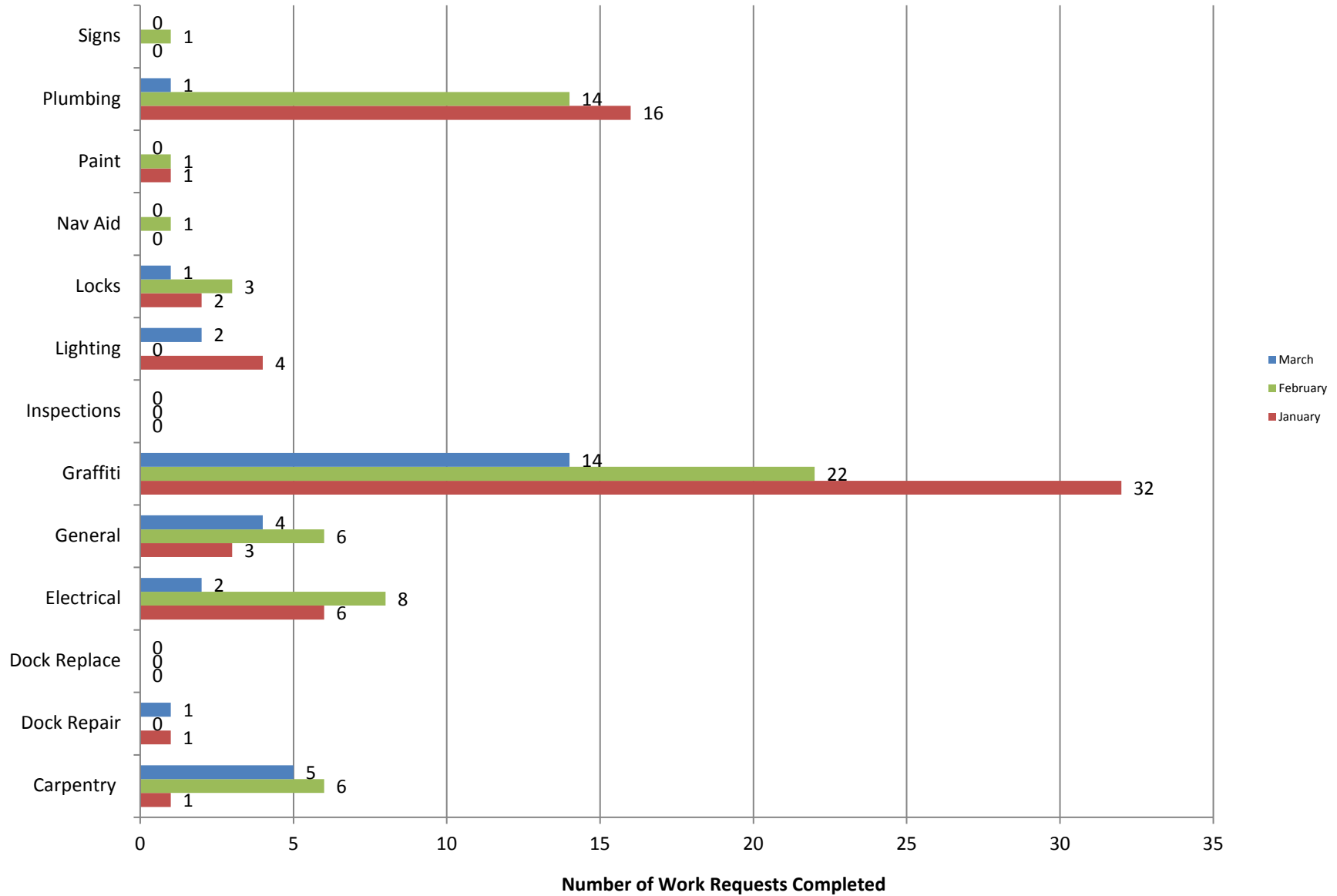
### **Projects in the works**

- ❖ Beach Maintenance staff is continuing the process of rebuilding sections of the peninsula where erosion occurs.



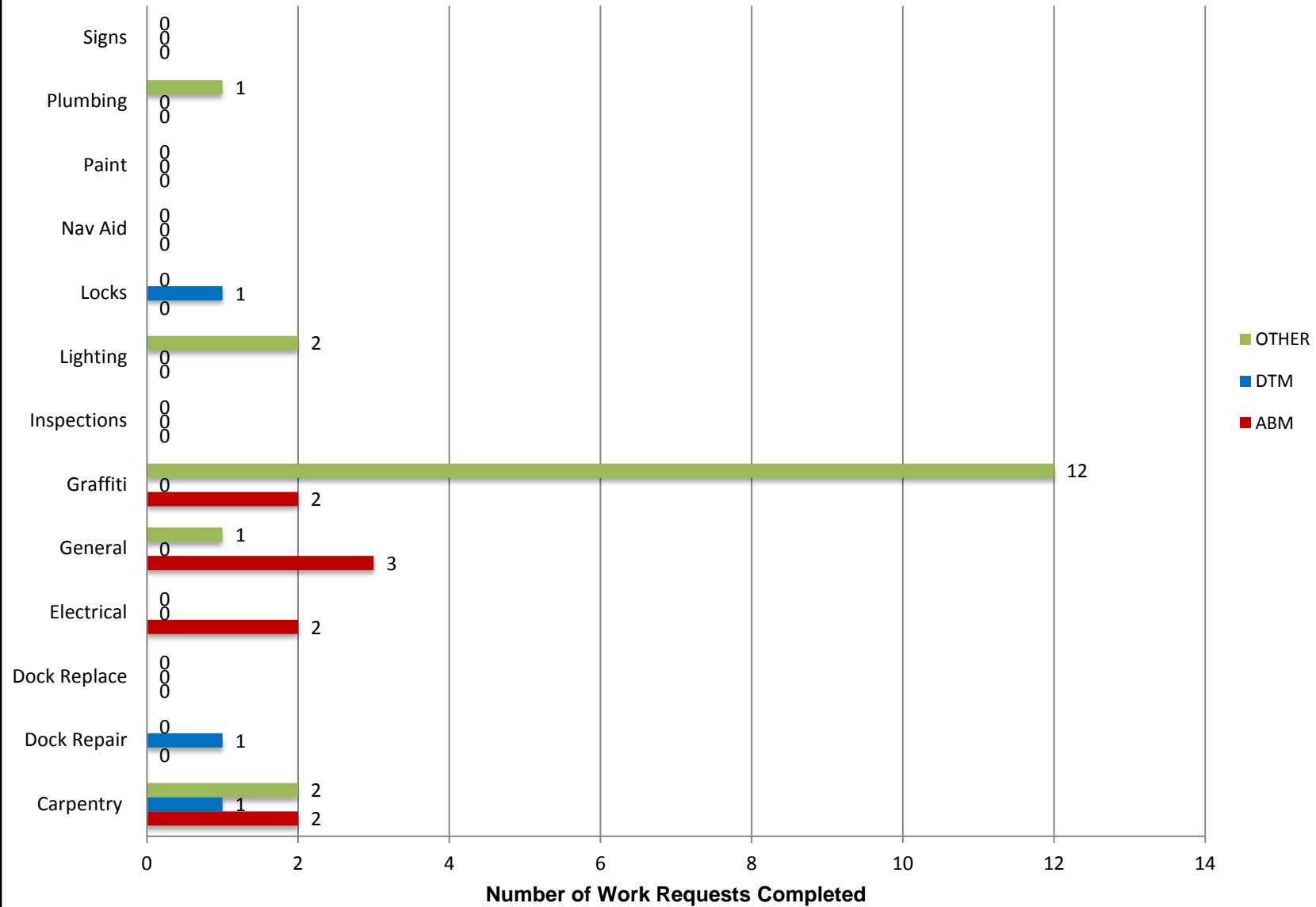
# Marine Maintenance

## Work Request Completed by Month



# Marine Maintenance

## Work Requests Completed by Location





## PUMPOUT INSPECTION REPORT

Pump Out Location	Inspection Date			
	3/04/21	3/11/21	3/18/21	3/25/21
Gwy A, A	W	W	W	W
Gwy A, B	W	W	W	W
Parker's Public Dock, A	W	W	W	W
Parker's Public Dock, B	W	W	W	W
Parker's Public Dock, C	W	W	W	W
Dock 9	NW	W	W	W
Basin 6 South	W	W	W	W
Davie's Launch Ramp, A	W	W	W	W
Station 31, A	W	W	W	W
Station 31, B	W	W	W	W
Station 21	W	W	W	W
Basin 1, Gwy 2	W	W	W	W
Basin 1, Gwy 4	W	W	W	W
Basin 2, Gwy 8	W	W	W	W
Basin 2, Gwy 11	W	W	W	W
Basin 3, Gwy 16	W	W	W	W
Basin 3, Gwy 19	W	W	W	W
Basin 4, Gwy 28	W	W	W	W
Basin 4, Gwy 31	W	W	W	W
Basin 5, Gwy 33	W	N/A	W	W
Basin 5, Gwy 34	W	W	W	W

KEY
W = Working
NW = Not Working
N/A = Not Applicable

# California, Los Angeles, Long Beach, Inner Harbor

April 2021

N 33° 46.3' / W 118° 12.6'

