

2KPLUS TREES *a giving heart project*

WE ONLY HAVE ONE EARTH

TOGETHER FOR
THE SECOND DISTRICT

IN FOUR YEARS, the Second District has benefited from historic economic development, investments in mental health, increased housing, tenant protections, and the lowest unemployment and crime rate the city has seen in over a decade. Then 2020 happened. 2020 is a tipping point for our communities. The pandemic has decimated our communities. We've lost loved ones, small businesses are closing, and the city budget is under great stress.

Even before COVID-19, environmental factors cut short **SEVEN MILLION** lives annually worldwide. Air pollution is still the biggest environmental risk for premature deaths each year from heart attacks, strokes, diabetes, and respiratory diseases. The pandemic has been more deadly for these communities with high pollution, larger cities and communities near pollution centers.

This historic moment calls for each of us to believe in something greater than ourselves, contribute to the community, and help tackle the crisis where we can. **2K Plus Trees — A Giving Heart Project**, gives everyone an opportunity to reflect on what makes our community strong and our vision for this great city, and it gives the opportunity for everyone to grow an urban forest that will reduce greenhouse gases, reduce heat islands, and enrich the character of our neighborhoods.

To help plant **over 2,300 trees** in the Second District, color a tree, share it with your neighbors and donate to the campaign! Take the pledge and **Join 2k Plus Trees - A Giving Heart Project**.

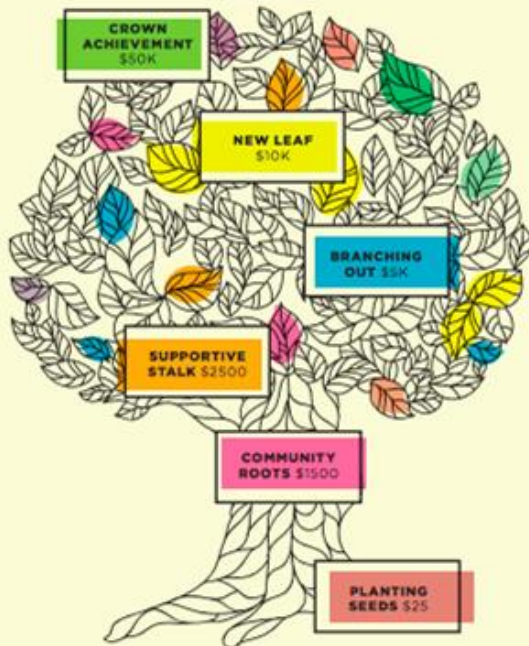
— JEANNINE PEARCE

COUNCILWOMAN



Planting the seed for a greener tomorrow

HELP US REACH OUR GOAL:
RAISE \$345,000 TO PLANT 2,300 TREES
SCAN THE QR CODE TO DONATE



**MAKE A TAX-DEDUCTIBLE
DONATION TODAY**

DONORS AT THE \$1K & ABOVE LEVEL TO BE LISTED
ON THE PROGRAM WEBSITE UNTIL THE CITY



Root your legacy in the growth of our city

I, _____

PLEDGE TO JOIN THE 2K PLUS TREES
A GIVING HEART PROJECT

AND WILL CONTRIBUTE:

- | | |
|--|--|
| <input type="checkbox"/> \$25 PLANTING SEEDS | <input type="checkbox"/> \$8K BRANCHING OUT |
| <input type="checkbox"/> \$1500 COMMUNITY ROOTS | <input type="checkbox"/> \$10K NEW LEAF |
| <input type="checkbox"/> \$2500 SUPPORTIVE STALK | <input type="checkbox"/> \$80K CROWN ACHIEVEMENT |

OTHER AMOUNT \$ _____

TO HELP PLANT AN URBAN FOREST THAT WILL CLEAN
OVER 900,000 POUNDS OF CARBON DIOXIDE

I AM COMMITTING TO:

- Be a steward of the environment, conserving energy, and reducing waste
- Build community safely, online, and at a distance
- Thoughtfully complete the "My Giving Heart" worksheet
- Color my Giving Heart poster and share online with the #CD20ivingHeart



SCAN THE QR CODE OR VISIT
weblink.donorperfect.com/GivingHeart
TO MAKE TAX-DEDUCTIBLE DONATION


2ND DISTRICT
PICTURE. PERFECT. DELIVERY.

Building a Long Beach that works for everyone starts by bringing together all stakeholders to develop creative solutions.

Our priorities include promoting a thriving local economy with good jobs, establishing safer neighborhoods, and increasing smart, local investment.

In addition to being accessible to constituents, paving roads, repairing sidewalks, and removing graffiti, City Council serves to draft public policy that enriches the lives of constituents in the Second District and beyond.

I am proud to have used my decade of public policy and community organizing experience to pass over 148 policy items in four years. These policies range from increasing housing access to removing barriers for live music at local venues. Each policy takes research, coalition building, and understanding the impacts for all stakeholders. I have tackled complex issues like Short Term Rentals which impact housekeepers, homeowners, and neighborhoods, strengthened the Climate Adaptation Action Plan to include a Point of Sale Policy, a workforce pipeline, and community solar initiative. Additional policies also range from a polystyrene ban, anti-tenant harassment, inclusionary housing, protections, inclusionary housing, local hire provisions, mandating a Trauma Informed city government, and supporting racial reconciliation.

—JEANNINE PEARCE, COUNCILWOMAN

ENVIRONMENT

- Led Innovative Expansion at the Aquarium of the Pacific
- People's Choice Energy CCA Feasibility Study
- Expanded the Port's Clean Trucks Program
- Reduced pollution through a City Wide Polystyrene Ban
- Installed 7 Solar Projects on City Property
- Expanded PACE funding to cover residential units
- Co-Led Measure US - Oil Tax Increase for Climate Change


GOOD GOVERNMENT

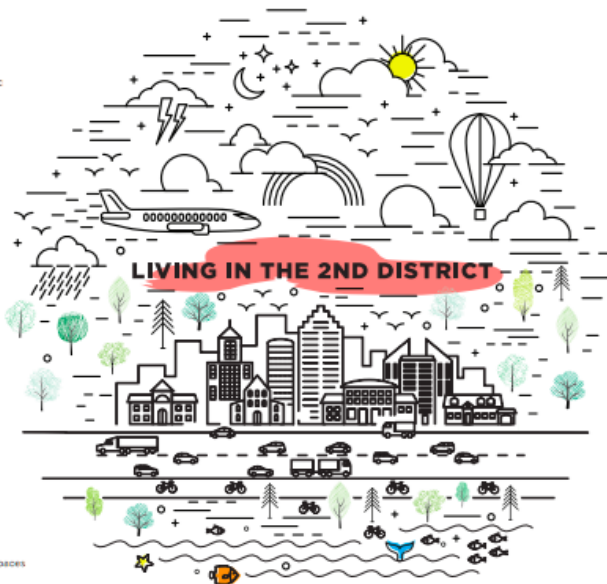
- Opened and Named the Billie Jean King Main Library
- Structurally funded Language Access for all residents
- Instituted a Trauma Informed city, becoming the 2nd city in the nation to adopt this model
- Reformed HR Practices for 6,000 Employees
- Launched first ever Renter Housing Division


ARTS

- Removed barriers for music in small business and public spaces
- Re-Opened & Programed Arts Park
- Partnered with Arts LB to quickly install over 30 Murals during the Pandemic
- Supported Percent for the Arts generating millions of dollars for local arts organizations


PAWS

- Implemented Compassion Saves policy saving 99% of dogs, 99% of cats, and 98% of all animal lives
- Built and named the Dr. Mickey Donahoe Dog Park
- Secured \$7,500 for Spay & Neuter Fund


JUSTICE

- Passed \$15 living wage prior to the State
- Justice Fund for Long Beach immigrants
- Housing Legal Fund
- City Wide Worker Retention Policy
- Racial Reconciliation & Justice Reform
- Re-named Columbus Day to Indigenous Peoples' Day
- Fought for Panic Buttons for hotel housekeepers


NEIGHBORHOODS

- Delivered renovations for Bixby Park Parcel One
- Created 8 new crosswalks & Flashing Beacons
- Regulated Short Term Rentals
- Tripled consultant services over the prior 4 years
- \$1 million dollars for beach concession stands
- Invested in tourism at the Convention Center


HEALTH

- Formed and secured 2 Homeless Engagement Response Teams (HEART)
- Re-Envisioning Public Safety with Mobile Mental Health Services
- Suicide Prevention Plan
- Secured Funding for STD and HIV prevention outreach
- Launched First Choice Healthy Kids Meals ordinance and funded a Homeless Safe Parking program


LGBTQ

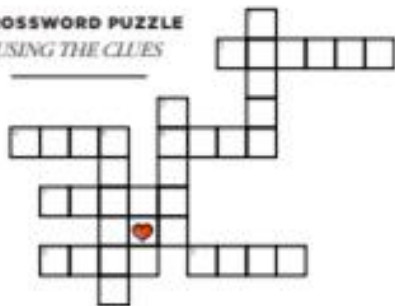
- Standardized flying the LGBTQ Pride flag at City Hall
- Review and Audit of LB Pride practices leading to reduced city Fees
- Endorsed enhanced HR practices for transgender employees
- Named 2016 Grand Marshal of Pride Parade

The environment's impact at a glance:


**CONNECT
DOT-TO-DOT**



**CROSSWORD PUZZLE
USING THE CLUES**



DOWN:

1. All the parts of the plant that grow above the ground and contain leaves
2. Connects the bulky crown with its roots
3. Part that is often brightly colored and all added to a stem directly

ACROSS:

1. A part of a tree which grows out from the trunk
2. Typically green and blade-like, but is attached to a stem directly

3. Plant part, also underground, in which plants store water, and store
4. The upper part with the branches
5. Supports leaves and fruits, stores
6. Underground part and roots of an herbaceous stem

PHOTO: GETTY IMAGES; ILLUSTRATION: GETTY IMAGES; ILLUSTRATION: GETTY IMAGES



**PUZZLE
SOLVE THE MAZE
BY TRACING THE PATH**



**TREES WORD SEARCH
FIND ALL OF THE TREE SPECIES
HIDDEN IN THE GRID**

I X K P E P P E R M I N T T R E E V B C
 V P W K R B W G P E V U X C L S A C I E
 Q W E I I U F O B I F X Z L A P R Y G T
 U E S P N A B L P T J R T K V S N A L V
 M C T B S O B D B X A P F X E C D M E M
 C U E L E D R E F F C Y E U N E G I A W
 R K R R V X I N O Y A K E I D U U Y F F
 A P N I H O S T F N R I U F E Z V X M M
 P P H K G S B R Y F A Z U N R V V F A M
 E O A A I P A U V Y N W H T L E W P O
 M U C R V C N M E C D P K Y R V R V R L P
 Y U K A G B E P G J A O T O U J X Y E Y
 R N B C V K B E L A V S F X M U G U O T
 T D E V O I O T K J I B T Y P M Y B O W
 L X R F S B X J A B N Z G D E X Q M B A
 E S R F F A C K P R N I Q K T V R O X J
 Z J Y Q T W E S T E R N R E D B U D S S
 B A B I A U S T R A L I A N W I L L O W
 P C O A S T L I V E O A K H X W A O W R
 B Z Q W T W P A L O V E R D E E H T E W

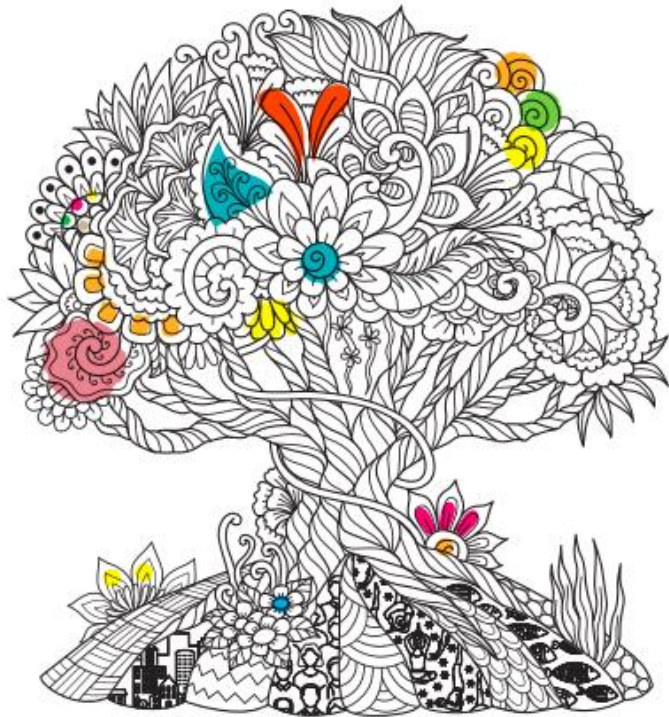
PHOTO: GETTY IMAGES; ILLUSTRATION: GETTY IMAGES; ILLUSTRATION: GETTY IMAGES



COLOR & SHARE MY GIVING HEART POSTER
ONLINE WITH #CD20LivingHeart



2KPLUS TREES *a giving heart project*



MAKE A TAX-DEDUCTIBLE DONATION TODAY! www.bit.ly/2k-trees



2KPLUS TREES *a giving heart project*

**JOIN
COUNCILWOMAN PEARCE &
COUNCILWOMAN ELECT ALLEN**

to Celebrate Progress Delivered
& Progress to Come as They
Raise Funds to Build a Resilient
Community, Together.

Featuring live music, the Taste of
2nd District, and special guests:
Mayor Garcia and Senator Gonzalez

**THURSDAY,
DEC. 10, 2020 @ 7:00 PM**

Join us on Zoom
bit.ly/2ktrees-zoom

SCAN THE QR CODE



OR VISIT [BIT.LY/2K-TREES](https://bit.ly/2k-trees) TO MAKE
A TAX-DEDUCTIBLE DONATION



MY GIVING HEART



LEAVES

MY ASPIRATIONS FOR MY COMMUNITY ARE:

BRANCHES

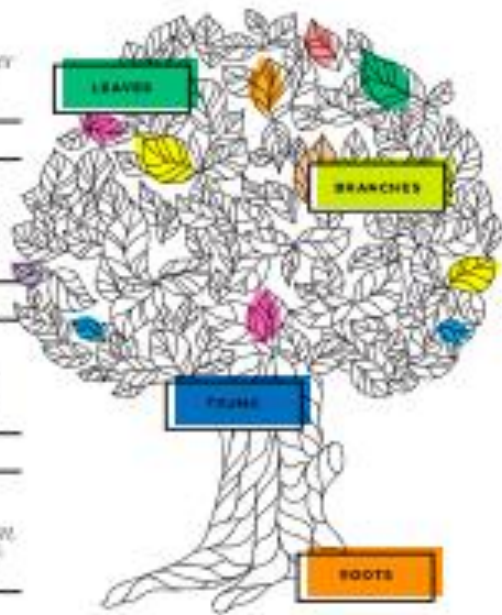
WHAT WE NEED TO REACH OUR GOALS:

TRUNK

MY "QUADRANTS" STRENGTHS INCLUDE:

ROOTS

WHEN THINGS ARE TIGHT, I KEEP GOING BECAUSE:



#G026IVINGHEART

TREE SPECIES IN THE 2ND DISTRICT



BIRCH



GOLDEN
TRUNK



BURNING
TREE



JACKPINE

