

DEFOREST PARK VISION PLAN

LONG BEACH PARKS & RECREATION COMMISSION
JULY 16TH 2020

CITY OF
LONGBEACH



DEFOREST PARK VISION PLAN PRESENTATION OVERVIEW

About the Vision Plan

Existing Conditions

Community Engagement

Vision Plan Concept

Next Steps





**THE DEFOREST PARK VISION PLAN PROVIDES
STRATEGIC GUIDANCE FOR FUTURE INVESTMENTS
AND IMPROVEMENTS TO MAXIMIZE IMPACT,
BEST SERVE THE COMMUNITY, AND ENHANCE
THE OVERALL PARK USER EXPERIENCE.**

ABOUT THE DEFOREST PARK VISION PLAN



**Conservation Corps
of Long Beach**



Camp Fire

**Camp Fire
Angeles Council**



**Ninth District
Council Office**

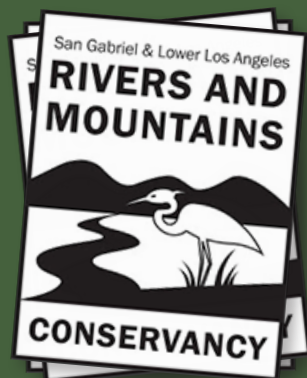


**City of Long Beach
Department of Parks
Recreation and Marine**



**City
Fabrick**

Funded by RMC Prop 1 a coalition of local nonprofits have **partnered** with the City of Long Beach to create a “Vision Plan” for DeForest Park.



WHAT IS RMC Prop 1?

California voters approved the Water Quality, Supply, and Infrastructure Improvement Act of 2014 (RMC Prop 1) which authorized \$7.5 billion dollars in general bonds for the acquisition, development, rehabilitation, restoration, and protection of land and water resources.

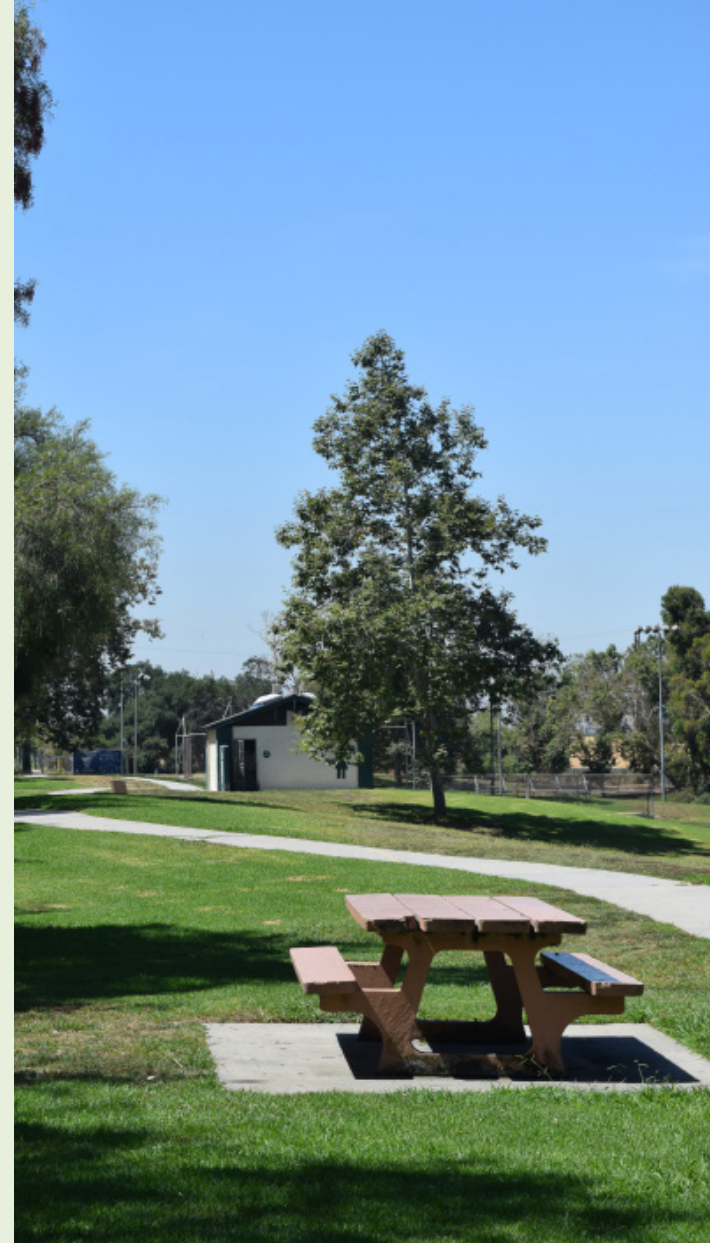
DEFOREST PARK VISION PLAN

ABOUT THE VISION PLAN

The DeForest Park Vision Plan will serve as a **guiding policy document** for what the **community believes are priorities** for future park investment.

Our team devoted to a “community-driven” effort, which means that community members were closely involved in every step of the decision-making process.

Simultaneously, the Conservation Corps of Long Beach and Camp Fire Angeles Council have **secured initial funding for new improvements**.



DEFOREST PARK VISION PLAN

ABOUT THE VISION PLAN

2016

LA County identifies North Long Beach as having a “very high” need for parks and open space.

- Citywide Average: 5.6 acres of park per 1,000 residents
- North Long Beach Average: 0.9 acres of park per 1,000 residents

2018

The City of Long Beach studied the potential for new parks and open spaces in North Long Beach.

2019

August: Site Analysis

- Walking tours
- Demographic, health, and spatial study
- Site survey & photo documentation
- Relevant planning and policy efforts

September: Park Audit

- Community & project team park audits

DEFOREST PARK VISION PLAN

ABOUT THE VISION PLAN

2019

October: First Workshop Series

- Public workshops
- DeForest Park Neighborhood Association
- Stakeholder group outreach
- Print & online survey

2020

January: Second Workshop Series

- Public workshops
- DeForest Park Neighborhood Association
- Stakeholder group outreach
- Print survey

March: Third Workshop Series

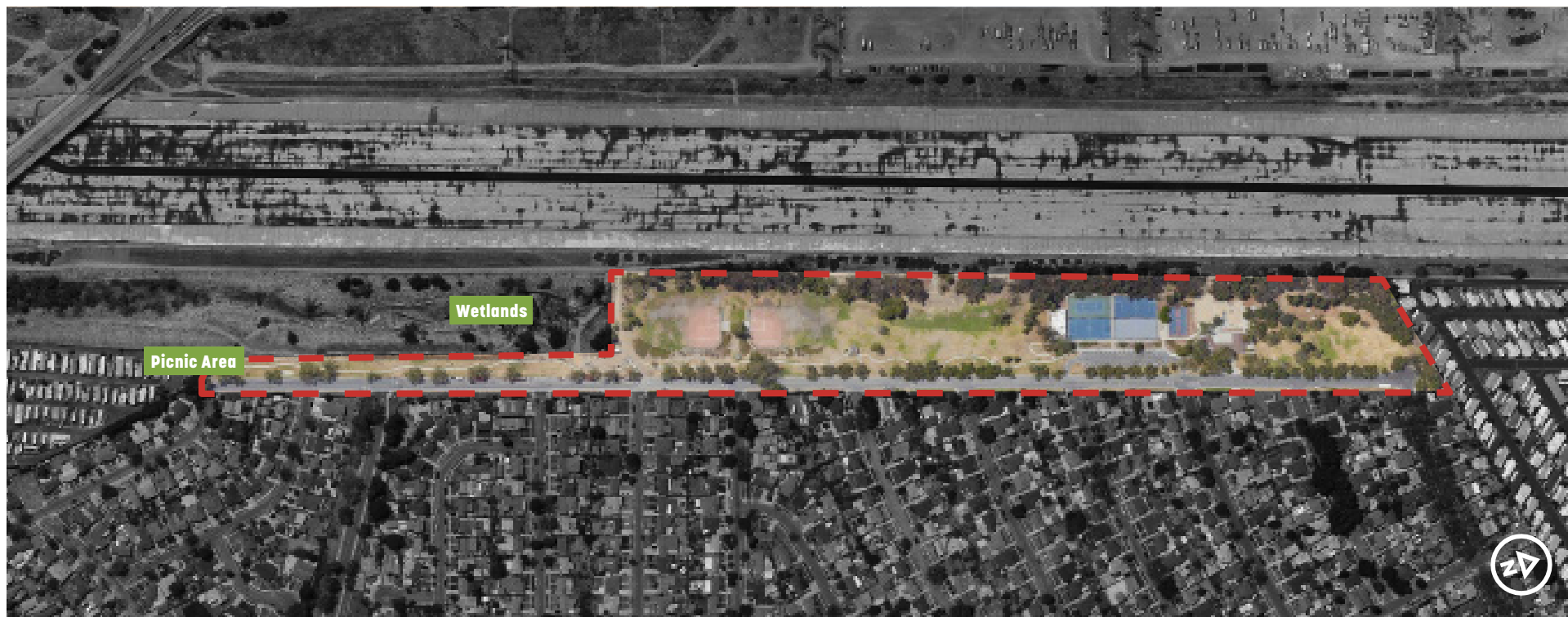
- Workshops at public events
- DeForest Park Neighborhood Association
- Signs and posters
- Stakeholder group outreach
- Online survey
- Conceptual Design & Vision Plan Draft

May: Long Beach Parks and Recreation Commission

June: Long Beach City Council

DEFOREST PARK VISION PLAN

EXISTING CONDITIONS



DEFOREST PARK VISION PLAN

EXISTING CONDITIONS

EXISTING CONDITIONS ANALYSIS

ENVIRONMENTAL HEALTH DATA

CalEnviroScreen 3.0

LA County Public Health

DEMOGRAPHIC TRENDS

US Census

PHYSICAL CONDITIONS

Park Audits

LA County Needs Assessment

Park Score + Walk Score

RELEVANT PLANNING EFFORTS

Open Space Element

PRM Strategic Plan

Other General Plan Elements

Uptown Open Space Vision Plan

The RiverLink Plan

Los Angeles River Revitalization Master Plan

Lower Los Angeles River Revitalization Plan

...and many more

OPEN SPACE AND RECREATION ELEMENT OF THE GENERAL PLAN

OCTOBER 2002

PREPARED BY DEPARTMENT OF PLANNING AND BUILDING
AND DEPARTMENT OF PARKS, RECREATION AND MARINE
CITY OF LONG BEACH

Reprinted 2005

Volume 2: Technical Plan Development
RECRUITMENT M

Place + Process + Projects

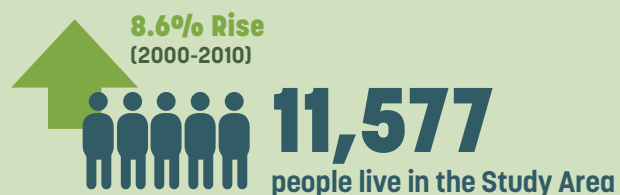
DEFOREST PARK VISION PLAN

EXISTING CONDITIONS

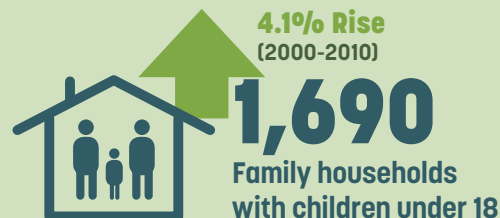
DEMOGRAPHIC ANALYSIS

Sources:
US Census 2010 & 2000
& CalEnviroScreen 3.0

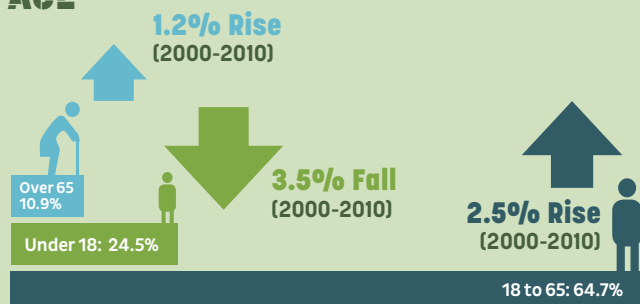
POPULATION



FAMILIES



AGE



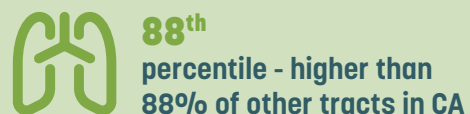
EMISSIONS



44.36 kg/day
Diesel Particulate Matter &

12.13 ug/m3
Particulate Matter 2.5
Risk of heart & lung disease, irregular heartbeat, asthma decreased lung function, and other serious issues

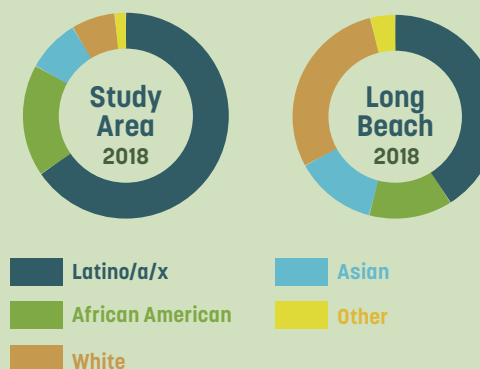
ASTHMA RATES



CHILDHOOD OBESITY



DIVERSITY



FOREIGN BORN



LANGUAGES



DEFOREST PARK VISION PLAN COMMUNITY ENGAGEMENT

ENGAGEMENT SUMMARY



13

Public Workshops
& Stakeholder Meetings



156

Park Audits &
Community Surveys



7

Park Ideas Created
by the Community



DEFOREST PARK VISION PLAN

COMMUNITY ENGAGEMENT



PARK AUDIT

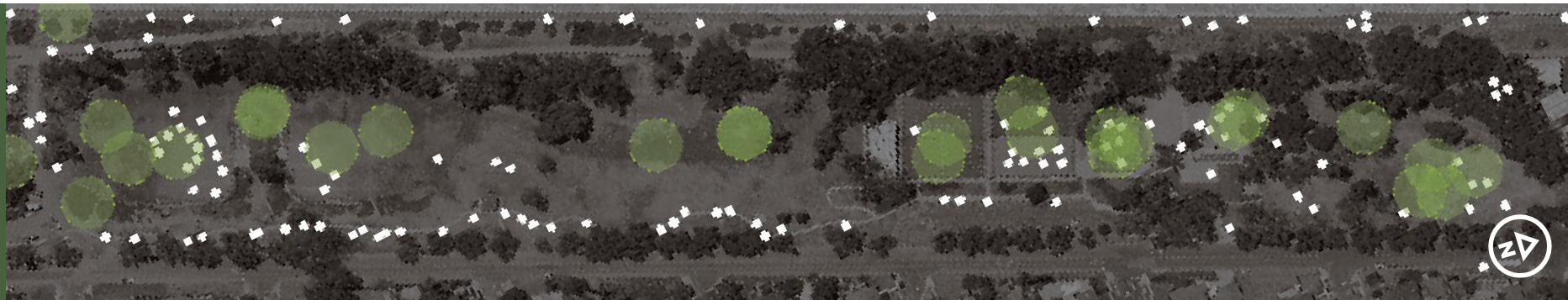
A Park Audit is a user-friendly and reliable tool designed to evaluate the physical condition of parks and their potential to promote physical activity.

- 2 Public Park Audits
- Available in Multiple Languages
- 22 Park Audit Participants
- Build Community Trust

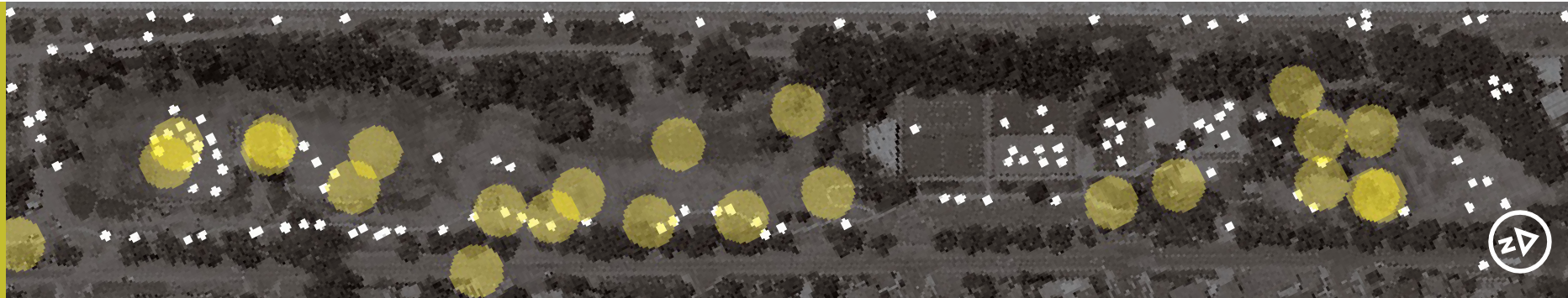
SUMMARY OF PARK AUDIT FINDINGS:

- The park has a diversity of options to play, exercise, and participate in recreational activities.
- Wetlands restoration is good example for improvement.
- Having open grassy areas in the park is a valuable asset for the community.
- There are opportunities to enjoy the park in passive recreation, such as strolling or experiencing nature.
- The playground and tennis court are in good condition.
- The park is built at an appropriate scale.
- There are several areas that are dark or hidden, making these areas feel unsafe.
- The general infrastructure of the park and its amenities need improvement and maintenance.
- Community center is aging and needs improvement.
- The park and its facilities have limited ADA accessibility.
- Not enough areas to sit down.
- Unsafe driving behavior limits park access for pedestrians and bicyclists.
- Litter and illegal dumping makes the park unattractive.

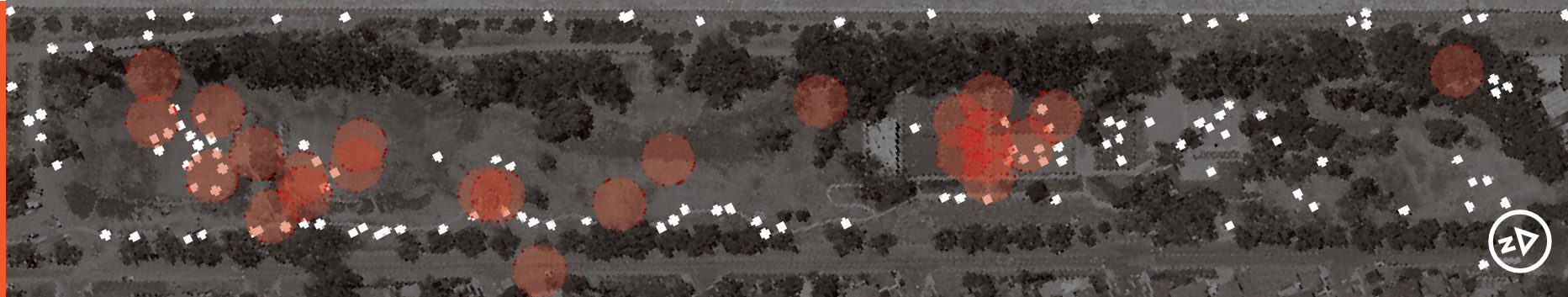
GOOD CONDITION



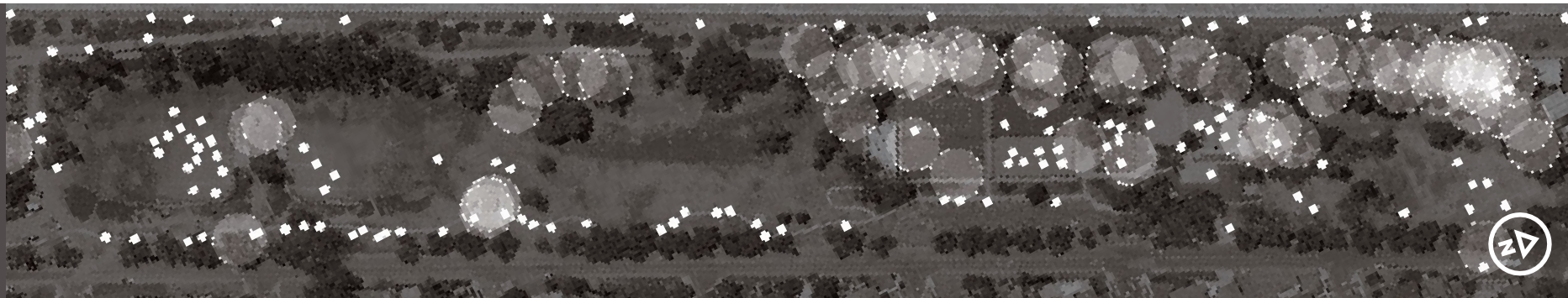
MODERATE CONDITION



BAD CONDITION



DARK/HIDDEN AREAS



DEFOREST PARK VISION PLAN

COMMUNITY ENGAGEMENT



WORKSHOP SERIES 1 [DISCOVERY]

The activity asked community members to share their knowledge about the existing conditions of the park, considering the needs of others through role-playing.

- 3 Public Community Workshops
- 33 Existing Conditions Activity Participants



WORKSHOP ONE - EXISTING CONDITIONS ACTIVITY

NORTH END OF THE PARK



**GOOD
PLACEMENT**



**GOOD
ACCESS**



**GOOD
ACTIVITY**



**GOOD
CONDITION**



OPPORTUNITY



**BAD
PLACEMENT**



**BAD
ACCESS**



**BAD
ACTIVITY**



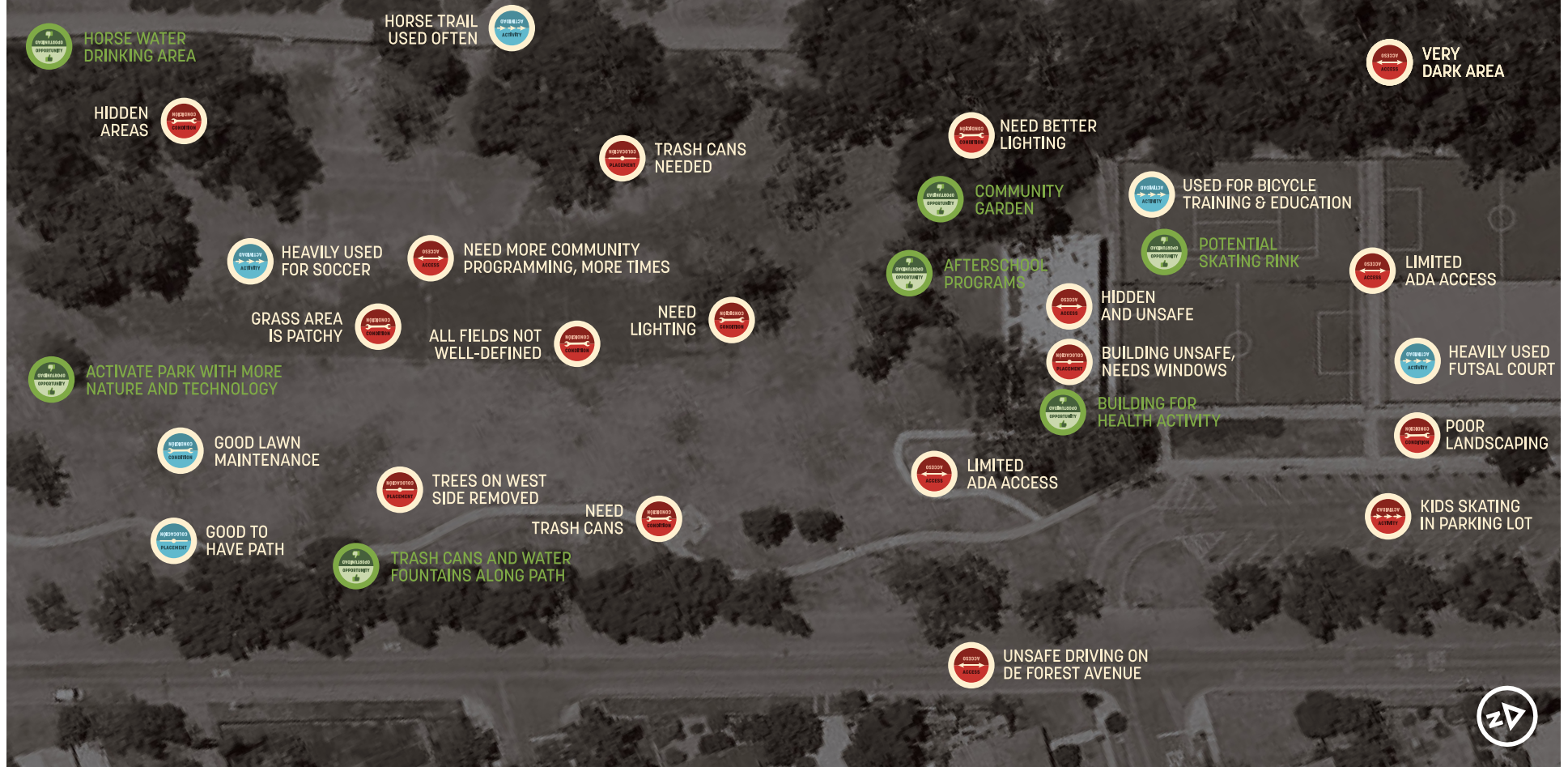
**BAD
CONDITION**



CHALLENGE

WORKSHOP ONE - EXISTING CONDITIONS ACTIVITY

MIDDLE OF THE PARK



**GOOD
PLACEMENT**



**GOOD
ACCESS**



**GOOD
ACTIVITY**



**GOOD
CONDITION**



OPPORTUNITY



**BAD
PLACEMENT**



**BAD
ACCESS**



**BAD
ACTIVITY**



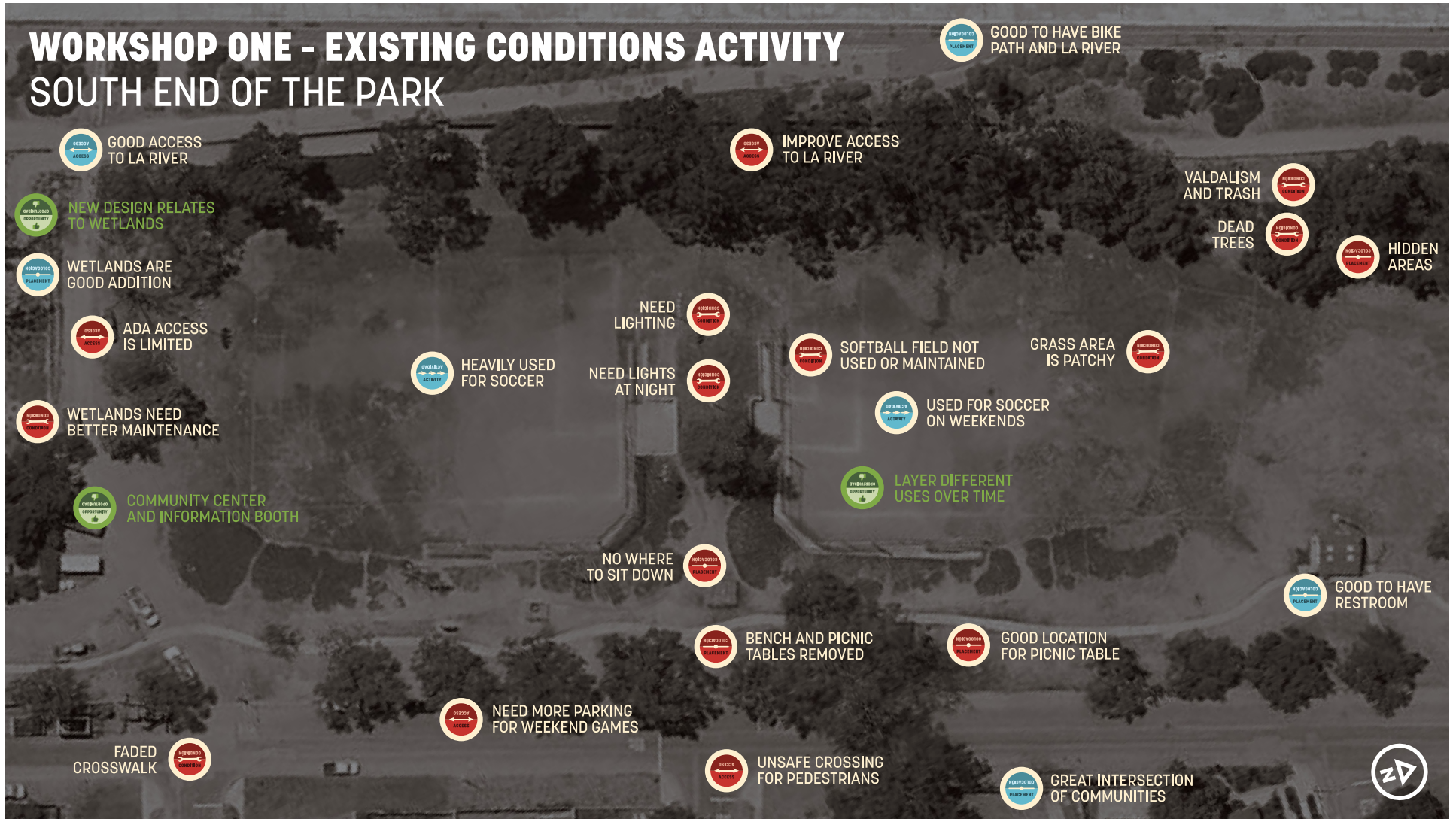
**BAD
CONDITION**



CHALLENGE

WORKSHOP ONE - EXISTING CONDITIONS ACTIVITY

SOUTH END OF THE PARK



**GOOD
PLACEMENT**



**GOOD
ACCESS**



**GOOD
ACTIVITY**



**GOOD
CONDITION**



OPPORTUNITY



**BAD
PLACEMENT**



**BAD
ACCESS**



**BAD
ACTIVITY**



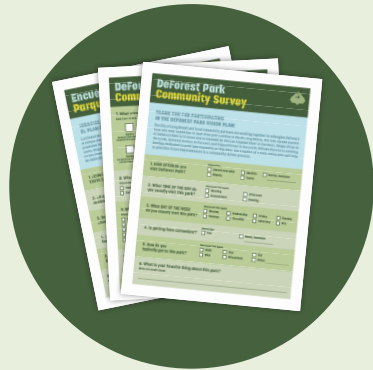
**BAD
CONDITION**



CHALLENGE

DEFOREST PARK VISION PLAN

COMMUNITY ENGAGEMENT



PUBLIC SURVEYS

Short surveys were distributed in-person and online and in multiple languages to understand how community members use DeForest Park.

- 52 Responses

SUMMARY OF SURVEY FINDINGS:

- The park is active both during the day and night, and throughout the entire week.
- Getting here is very convenient.
- Most people access the park by walking over. Some people drive or bike over to the park.
- People are attracted to the park because of the walking trail, wetlands, and its close proximity to people's homes.
- The top community priority for the future of the park is "safety", "upgrades", and "education".
- The secondary community priorities are "accessibility", "sustainability", and "health".
- The community believes that the population group we should be most mindful of is "families".
- Community members are willing to get involved with the change, mainly by reporting any issues to the police or by using the "Go Long Beach" app.
- People are also willing to help participate in neighborhood cleanups and attending public meetings.

DEFOREST PARK VISION PLAN

COMMUNITY ENGAGEMENT



WORKSHOP SERIES 2 [OPPORTUNITY]

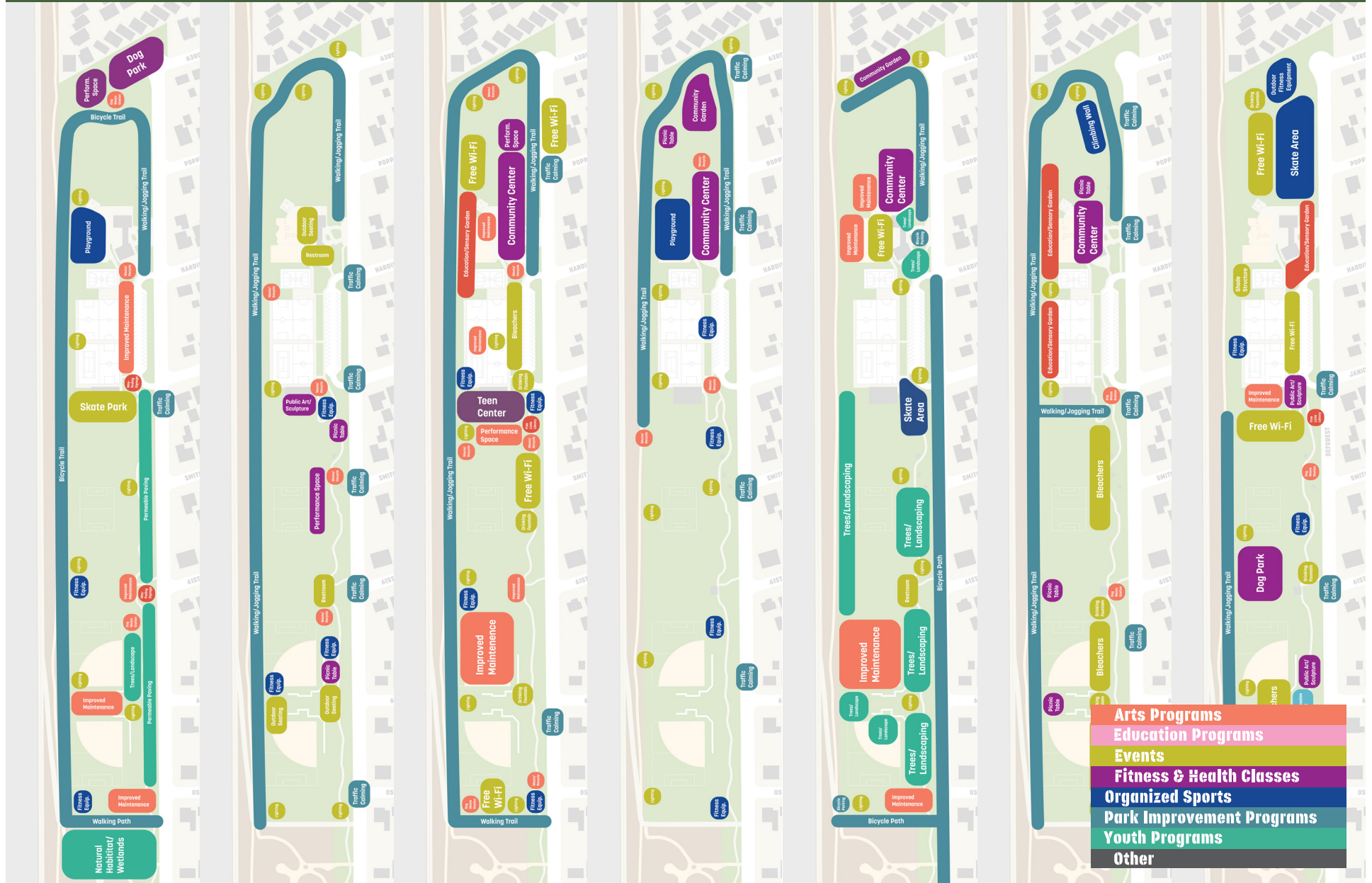
The activity asked community members to identifying potential park opportunities for the park to best serve the needs of all park users through a board game.

- 4 Public Community Workshops + 3 Stakeholder Workshops
- 63 Design Your Park Activity Participants



DEFOREST PARK VISION PLAN

COMMUNITY ENGAGEMENT



DEFOREST PARK VISION PLAN

COMMUNITY ENGAGEMENT



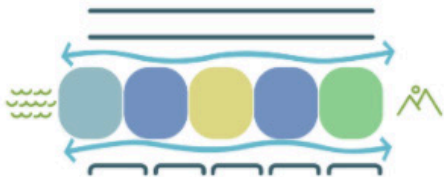
WORKSHOP SERIES 3 [REFINEMENT]

The online survey asked community members to choose between two conceptual designs and answer questions to refine the final community conceptual design.

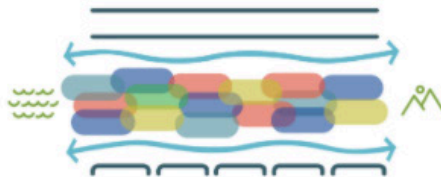
- 1 Virtual Public Workshop
- 82 Survey Participants

* 1. Which of the two Conceptual Design options do you like more?

**Conceptual Design
Option One**



**Conceptual Design
Option Two**



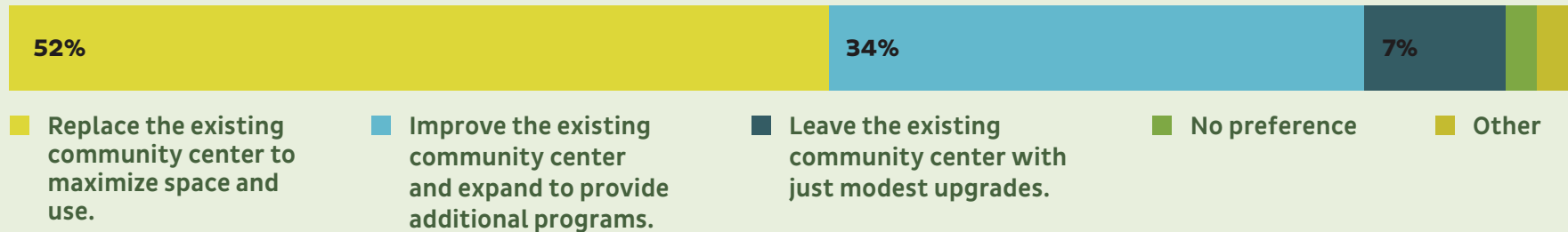
DEFOREST PARK VISION PLAN

COMMUNITY ENGAGEMENT

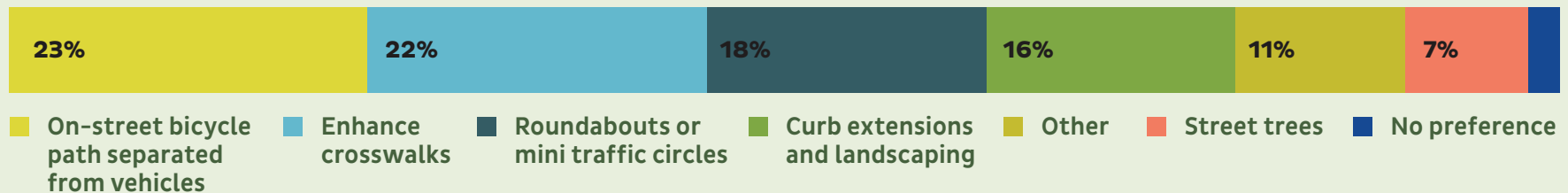
1. WHICH OF THE TWO CONCEPTUAL DESIGN OPTIONS DO YOU LIKE MORE?



2. THE COMMUNITY CENTER IS AGING AND IN NEED OF IMPROVEMENTS. TO WHAT EXTENT SHOULD THE COMMUNITY BUILDINGS BE IMPROVED AND/OR REPLACED?



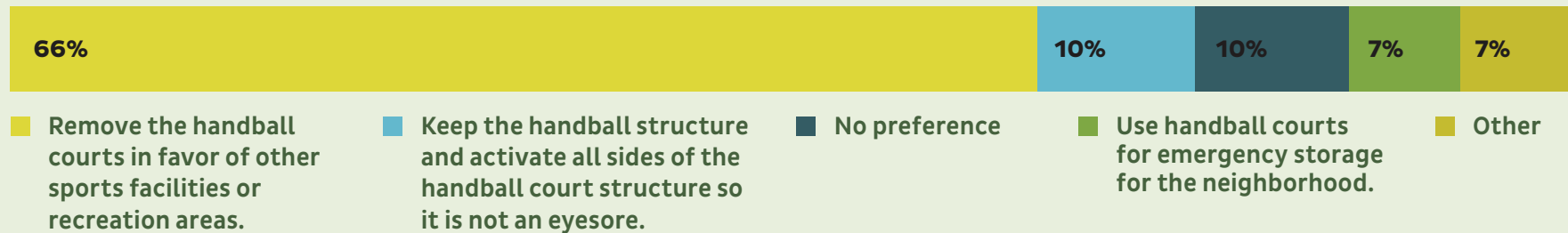
3. COMMUNITY MEMBERS REPORT UNSAFE DRIVING BEHAVIOR NEAR THE PARK, WHAT POTENTIAL IMPROVEMENTS WOULD YOU PREFER TO MAKE DEFOREST AVENUE SAFER PARK USERS?



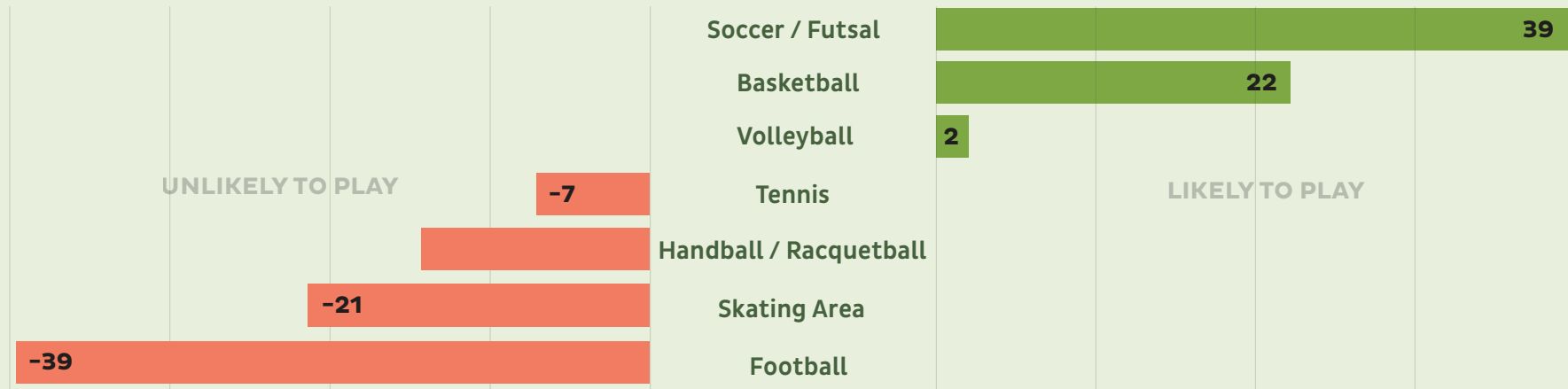
DEFOREST PARK VISION PLAN

COMMUNITY ENGAGEMENT

4. CURRENTLY THE HANDBALL COURT STRUCTURE IS CLOSED DOWN AND INACCESSIBLE TO THE PUBLIC. IT ALSO DIVIDES THE PARK INTO TWO, LIMITING NORTH-SOUTH ACCESSIBILITY AND CREATING HIDDEN AND UNSAFE AREAS. SHARE YOUR THOUGHTS OF POTENTIAL FUTURE USES OF THE SPACE AS SUGGESTED BY COMMUNITY MEMBERS:



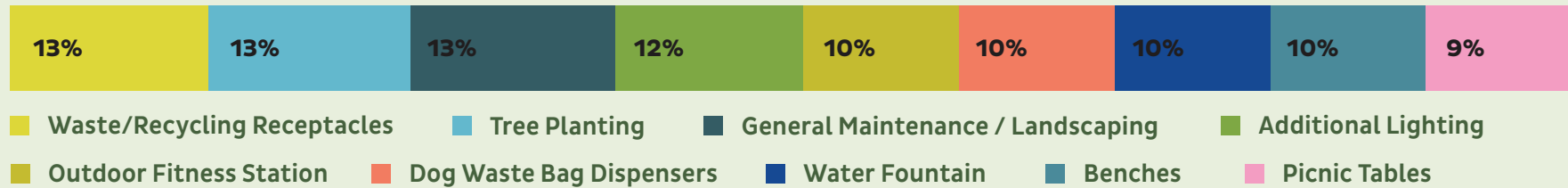
5. PARK USERS SHARED THAT SPORTS COURTS AND FIELDS HAVE DIFFERENT LEVELS OF DEMAND AND USE DEPENDING OF THE TIME OF DAY. PLEASE SHARE YOUR THOUGHTS TO HOW LIKELY YOU AND YOUR FAMILY ARE TO USE THE FOLLOWING SPORTS FACILITIES:



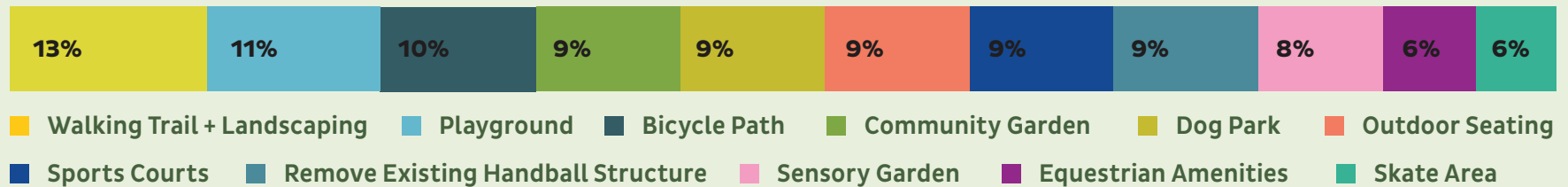
DEFOREST PARK VISION PLAN

COMMUNITY ENGAGEMENT

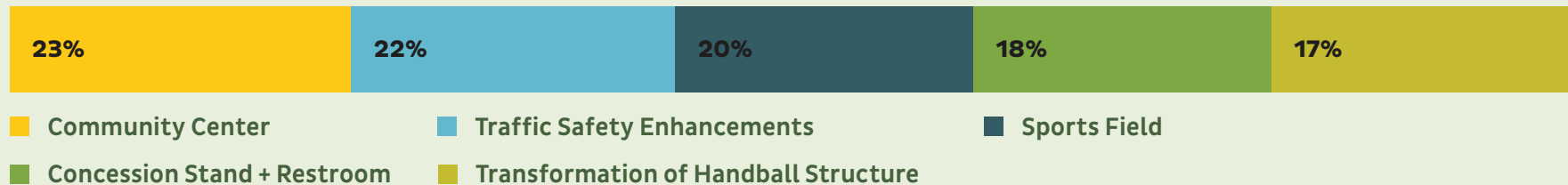
6. HOW WOULD YOU PRIORITIZE THESE POTENTIAL SMALLER SIZE PROJECTS?



7. HOW WOULD YOU PRIORITIZE THESE POTENTIAL MEDIUM SIZE PROJECTS?



8. HOW WOULD YOU PRIORITIZE THESE POTENTIAL LARGER SIZE PROJECTS?



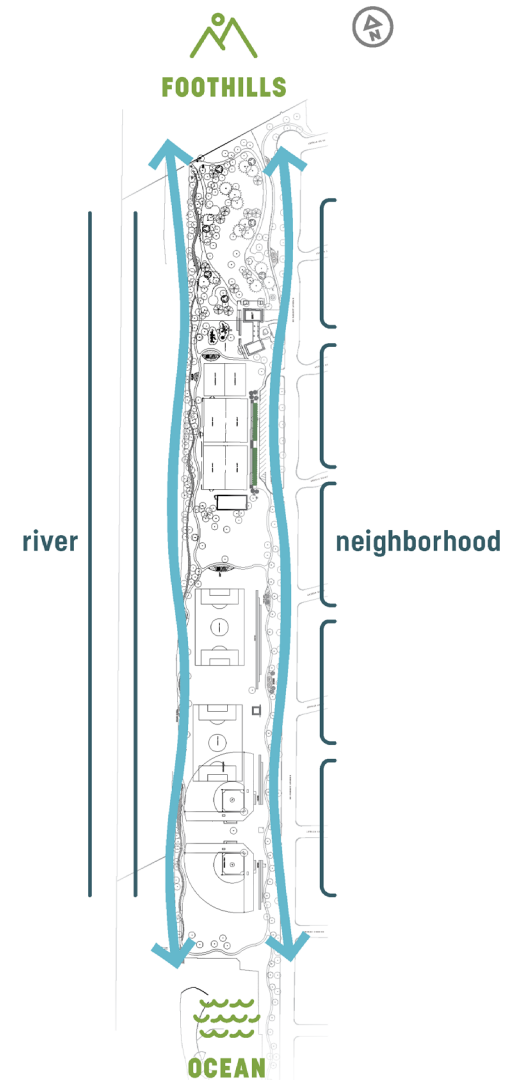
DEFOREST PARK VISION PLAN

VISION PLAN CONCEPT

DeForest Park draws inspiration from the **OCEAN** and the **FOOTHILLS** and harmoniously unifies the DeForest Wetlands to the south with the sloping terrain and forested landscape to the north.

DeForest Park also responds to its surrounding context of the **NEIGHBORHOOD** with the **LA RIVER**, serving the park needs of local residents and identifying the LA River as a regional opportunity for habitat restoration and play.

They are woven together by two **NORTH-SOUTH CONNECTIONS** that offer unique walking and bicycling experiences throughout the entire park.



CONCESSION STAND
+ RESTROOM

SOCCER FIELD
+ SOFTBALL FIELD

LA RIVER
ACCESS

FITNESS
STATION

SOCCER FIELD
+ OPEN LAWN

LA RIVER
ACCESS

DOG
PARK

NATURE TRAIL
+ DRY CREEK BED

TENNIS
COURT

FITNESS
STATION

COMMUNITY
GARDEN

DISCOVERY TRAIL
+ YOUTH CAMPING

LOS ANGELES
RIVER ACCESS

SEATING BUILT
IN TOPOGRAPHY

SEATING BUILT
IN TOPOGRAPHY

SOCCER FIELD
+ SOFTBALL FIELD

FITNESS
STATION

SEATING BUILT
IN TOPOGRAPHY

WALKING
+ BIKE PATH

WALKING
+ BIKE PATH

FUTSAL
COURTS

BASKETBALL
COURTS

EMERGENCY
STORAGE

FITNESS
STATION

FITNESS
STATION

WALKING
+ BIKE PATH

PLAYGROUND
EXPANSION

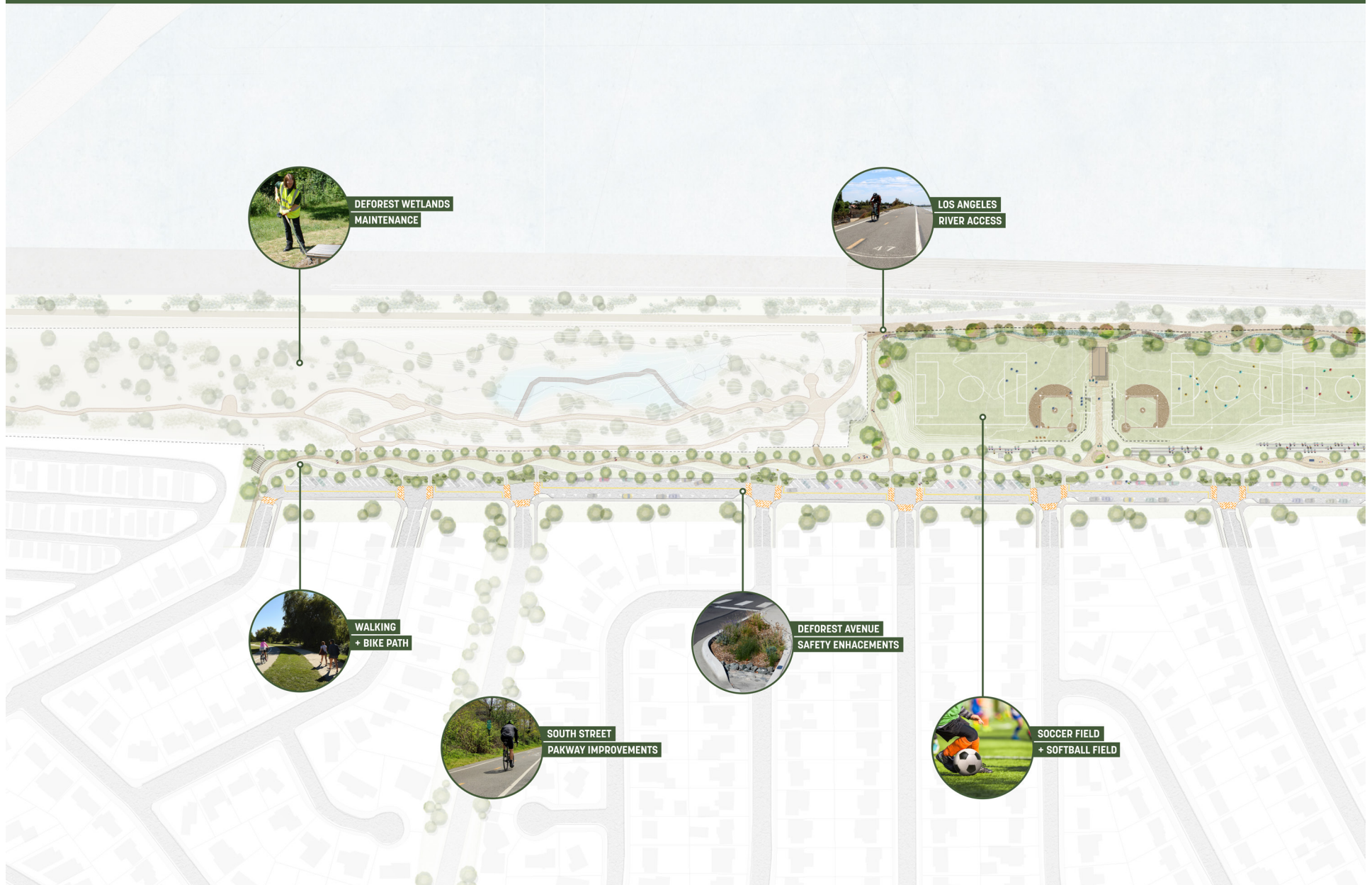
COMMUNITY PLAZA
+ AMPHITHEATER

COMMUNITY CENTER
+ ENTRY PLAZA

SIDWALK
ADDITION

DEFOREST PARK VISION PLAN

VISION PLAN CONCEPT



DEFOREST PARK VISION PLAN

VISION PLAN CONCEPT



DEFOREST PARK VISION PLAN

VISION PLAN CONCEPT



DEFOREST PARK VISION PLAN

VISION PLAN CONCEPT



DEFOREST PARK VISION PLAN

NEXT STEPS

FUNDING SECURED

DeForest Wetlands Grant

San Gabriel and Lower Los Angeles RMC Proposition 1 Planning Grant

Conservation Corps of Long Beach Facility Grant

Camp Fire Grant – Port of Long Beach



THANK YOU!

CITY OF
LONG BEACH

