

MAC Report

June 2020



SUBMITTED BY THE MARINE BUREAU



TABLE OF CONTENTS

1. Marinas and Waterways
2. Beaches and Waterways
3. Marine Maintenance Work Order Graphs
4. Pump Out Inspection Report
5. Tide Table



MARINAS AND WATERWAYS

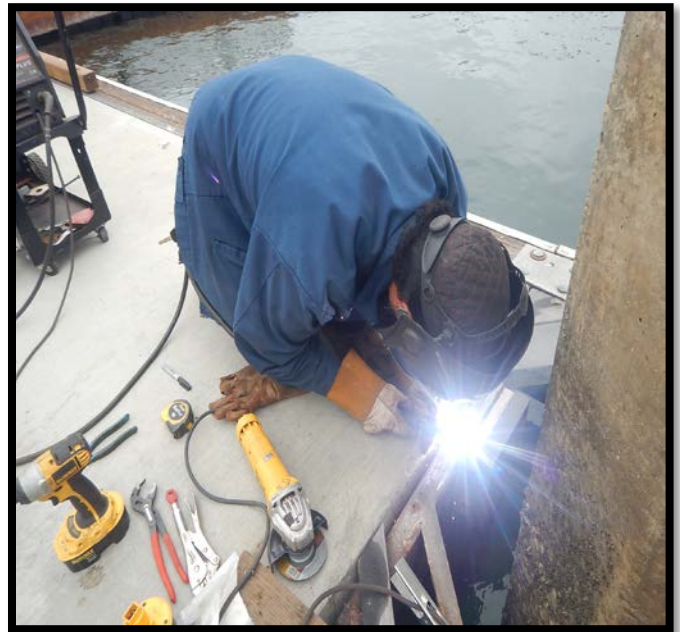
Accomplishments

- ❖ Staff installed all new swim line and line buoys at Mother's Beach designated swim area.
- ❖ Staff fabricated and installed 3 Ballard's at Marine Stadium side entrance.
- ❖ Staff installed new fire hose cabinet door at the rowing center.
- ❖ Staff fabricated new brackets for failing pile pocket bracket at Gangway A in DTM.
- ❖ Staff reconfigured parking for outdoor seating area at San Pedro's fish market.
- ❖ Staff fabricated the fencing at boat owner's restroom D-7.
- ❖ Staff repaired all damaged concrete surrounding sewer lids on the Peninsula bay side.
- ❖ Staff painted all backflows throughout Basin's 1-3.
- ❖ Staff fabricated and installed new brow flap on ABM fuel dock.
- ❖ Staff installed two new windows at station 31.



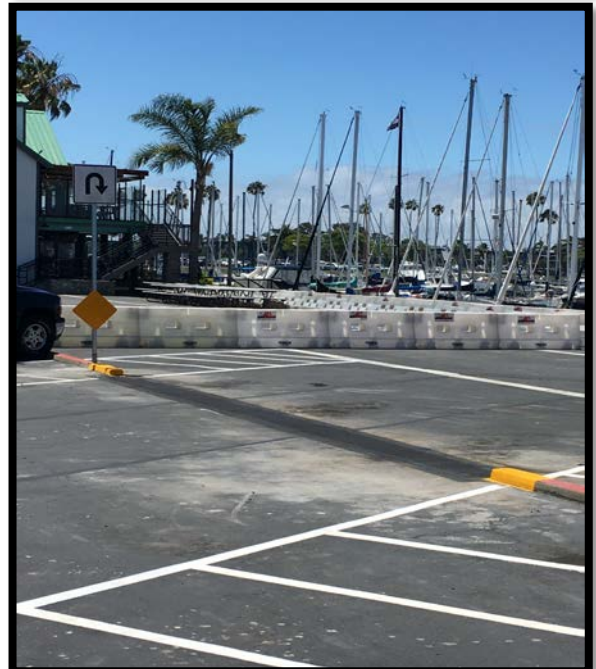
Projects in the works

- ❖ Staff is in the process of replacing all the damaged and missing signs throughout the Long Beach Shoreline Marina. Staff has already replaced all the "Gangway" and "No Visitor" signs. 90% completed.
- ❖ Staff is in the process of retrofitting the existing twelve (12) booster pumps from a wet system to a dry fire suppression system in the Long Beach Shoreline Marina. 25% completed.
- ❖ Staff is in the process of making improvements to the Alamitos Bay Marina office including: painting the interior of the building. 50% completed.
Staff is in the process of inspecting and tightening all the loose fingers throughout the Long Beach Shoreline Marina. 40% completed.
- ❖ Staff is in the process of inspecting and replacing all the damaged gangway water supply lines throughout Long Beach Shoreline Marina, as needed. 45% completed.
- ❖ Staff is in the process of repairing the restroom plumbing throughout Long Beach Shoreline Marina. 35% completed.



MARINAS AND WATERWAYS

- ❖ Staff is in the process of installing new LED lighting in the Marine Patrol building. 50% completed.
- ❖ Staff is in the process of repairing concrete fingers throughout Long Beach Shoreline Marina. 10% complete.
- ❖ Staff is in the process of repairing all damaged concrete behind Spinnaker Bay near the seawall.
- ❖ Staff is in the process of replacing all electrical components (breakers, receptacles, etc.) inside the pedestals located throughout Shoreline & Rainbow Harbor Marina's. 15% complete.
- ❖ Staff is in the process of striping the boatowner's parking area throughout Basins 1-3. 35% complete.
- ❖ Staff is in the process of replacing exterior doors at the Belmont Pool office. 50% complete.
- ❖ Staff is in the process of installing two (2) new power pedestals on long dock North. 50% complete.
- ❖ Staff is in the process of removing nine (9) backflow vaults throughout Basin's 1-3. 90% complete.
- ❖ Staff is in the process of doing all bright work in Basin's 1,2 & 3 50% complete.
- ❖ Staff is in the process of fabricating and installing new brow flap on ABM's fuel dock ramp. 50% complete
- ❖ Staff is in the process of changing all roller bearings for DTM's gangway's 10% complete.



BEACHES AND WATERWAYS

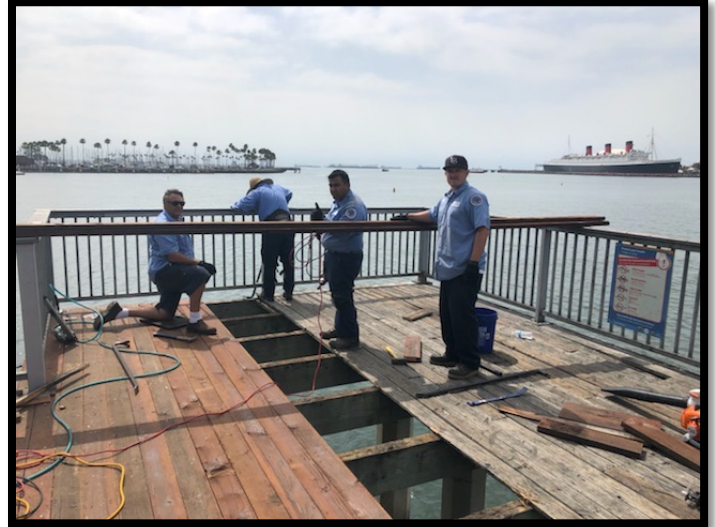
Accomplishments

- ❖ Beach Maintenance staff removed over 123.25 tons of trash and debris from the beaches and inner bays.
- ❖ Beach Maintenance staff serviced 200 trash receptacles during the month of June.
- ❖ Beach Maintenance staff built up and maintained the berm on the East Peninsula beach between 62nd – 72nd place, depositing over 3,200 tons of sand for the month of June.
- ❖ Beach Maintenance staff swept the bike/pedestrian path.
- ❖ Beach Maintenance staff conducted weekly cleanups of several homeless encampments throughout the beach areas.
- ❖ Beach Maintenance staff raked and cleaned throughout the beach areas.
- ❖ Beach Maintenance staff removed dead plants and planted new plants near the Belmont Plaza Pool.
- ❖ Beach Maintenance staff painted new plants around the Dolphin Fountain.
- ❖ Queensway Bay staff conducted a cleaning of all 60 basket filters in the Rainbow Lagoon; six days per week, twice per day. Staff replaces and cleans all 60 baskets once a month.
- ❖ Queensway Bay staff conducted daily removal of water borne debris and algae in the Rainbow Lagoon, Rainbow Harbor Marina and Long Beach Shoreline Marina using hand nets and a small skimmer boat.
- ❖ Queensway Bay staff mowed and detailed the Rainbow Lagoon Island grass area.
- ❖ Queensway Bay staff coordinated the replacement of skimmer lids.
- ❖ Queensway Bay staff conducted a video inspection of Vault B intake pipes and repaired an 8-inch valve at Rainbow Lagoon.
- ❖ Queensway Bay staff coordinated the replacement of the fountain at Rainbow Lagoon.
- ❖ Queensway Bay staff repaired the motor and pump at Vault A at Rainbow Lagoon.
- ❖ Queensway Bay staff removed trash from docks, three times per week.



BEACHES AND WATERWAYS

- ❖ Queensway Bay staff conducted daily cleaning and maintenance of all trash skimmers on the docks, seven days per week.
- ❖ Queensway Bay staff conducted monthly inspections on all docks throughout Rainbow Harbor Marina.
- ❖ Queensway Bay staff serviced and conducted daily cleaning of the public elevator.
- ❖ Queensway Bay staff conducted weekly encampment posting and cleanups.
- ❖ Queensway Bay staff worked with Gas Department to conduct a gas inspection at LA River.
- ❖ Queensway Bay staff replaced the decking on Fishing Pier #4.
- ❖ Queensway Bay staff coordinated repairs at Pier Point sewage lift station.
- ❖ Queensway Bay staff conducted daily graffiti removal of the entire Rainbow Harbor area, including the Queensway bridge bike path and the Pier Point parking lot.
- ❖ Queensway Bay staff completed and closed 59 "Go Long Beach Request" for the month of June.
- ❖ Queensway Bay staff performed routine maintenance on the Wave and Dolphin Fountain 2 times per week.
- ❖ Queensway Bay staff conducted routine maintenance on the Wave Fountain filter pumps.
- ❖ Queensway Bay staff power washed the exterior of the Wave Fountain bi-weekly.
- ❖ Queensway Bay staff coordinated the installation of the automatic drain valve on the Wave Fountain compressor tanks.
- ❖ Queensway Bay staff installed the basin drain nozzle and repaired a 2-inch pipe on the Wave Fountain.

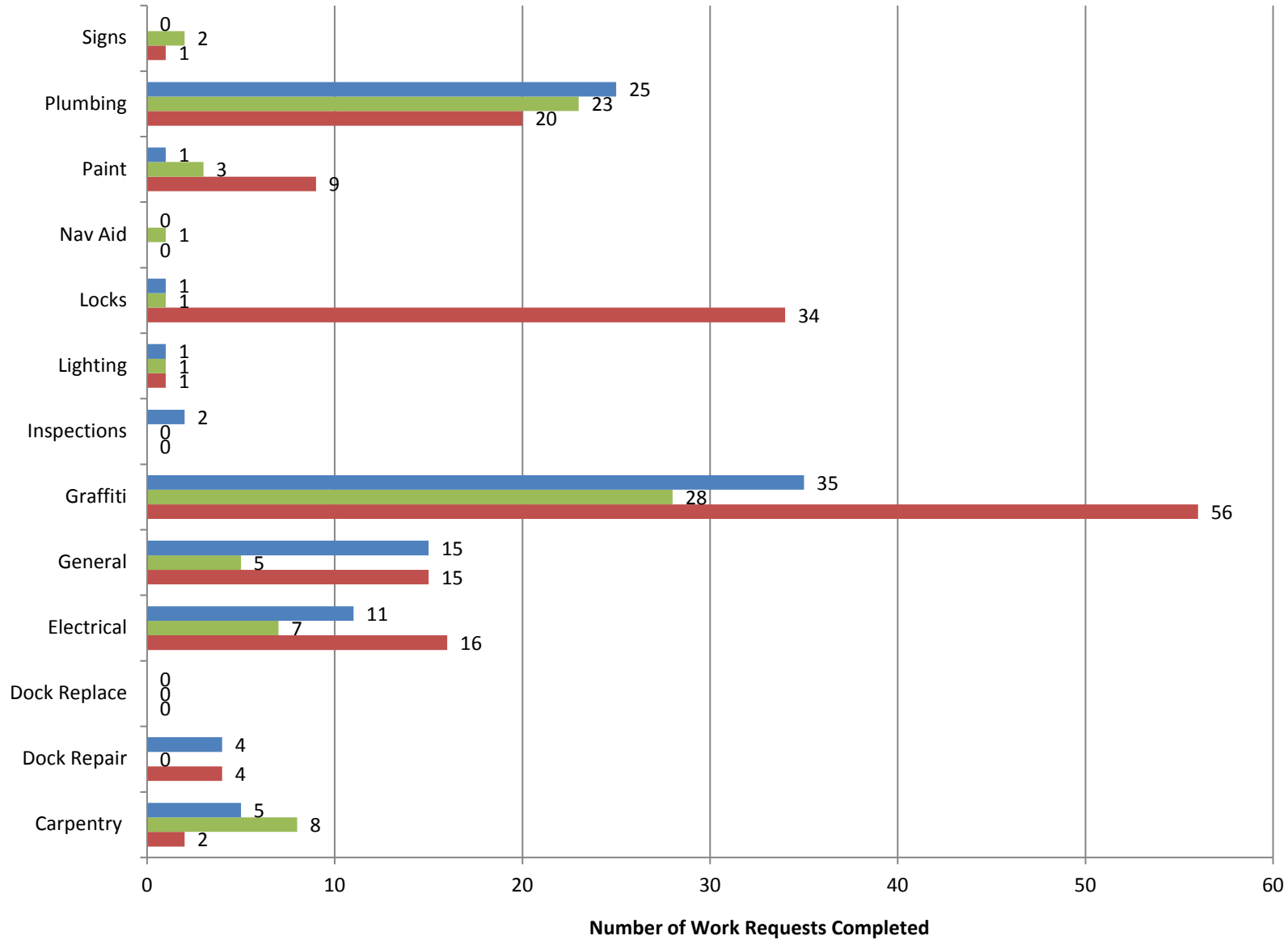


Projects in the works

- ❖ Beach Maintenance staff is continuing the process of rebuilding sections of the peninsula where erosion occurs.

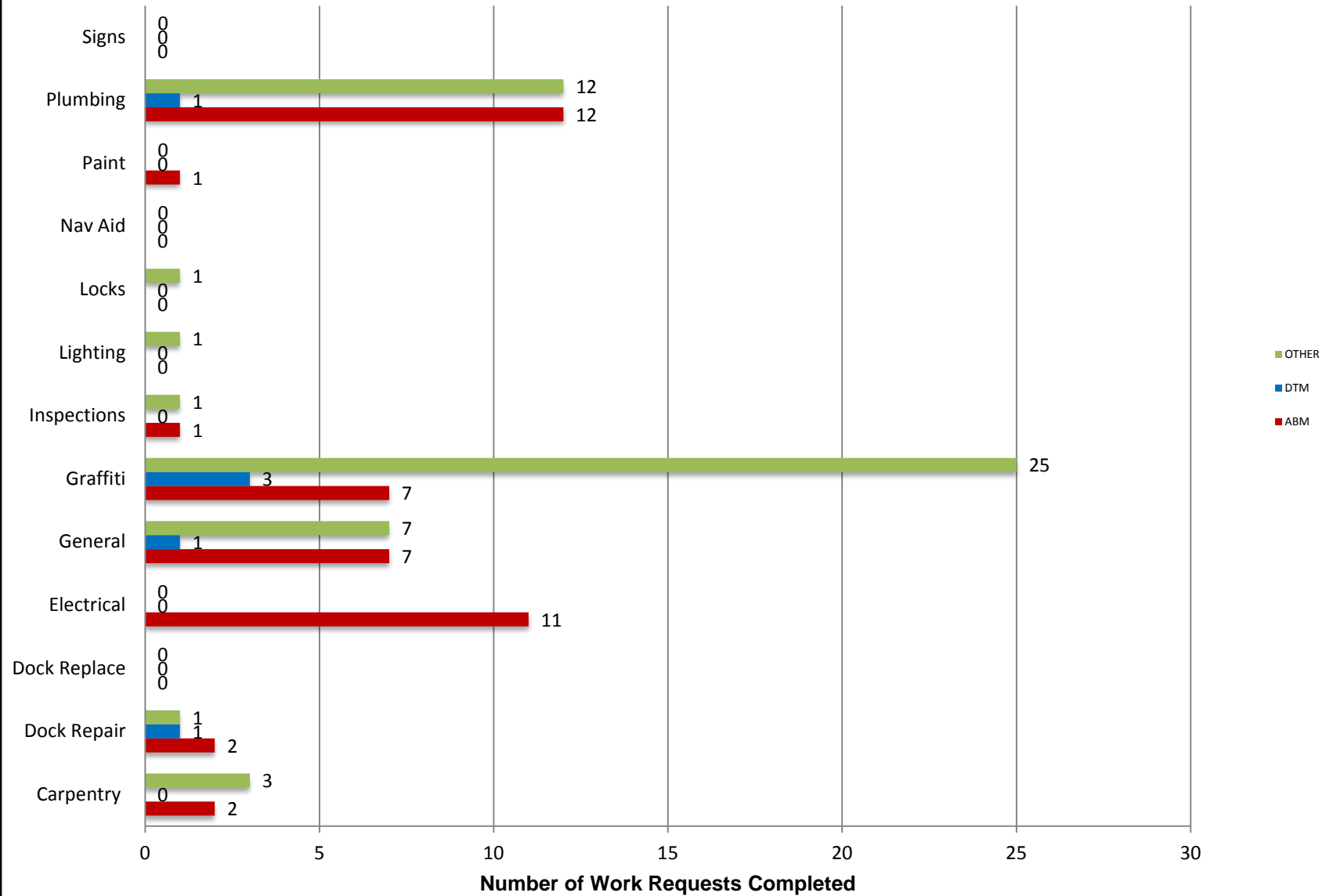
Marine Maintenance

Work Request Completed by Month



Marine Maintenance

Work Requests Completed by Location



PUMPOUT INSPECTION REPORT

Pump Out Location	Inspection Date			
	6/4/20	6/11/20	6/18/20	6/25/20
Gwy A, A	W	W	W	W
Gwy A, B	W	W	W	W
Parker's Public Dock, A	W	W	W	W
Parker's Public Dock, B	W	W	W	W
Parker's Public Dock, C	W	W	W	W
Dock 9	W	W	W	W
Basin 6 South	W	W	W	W
Basin 6 North	W	W	W	W
Davie's Launch Ramp, A	W	W	W	W
Station 31, A	W	W	W	W
Station 31, B	W	W	W	W
Station 21	W	W	W	W
Basin 1, Gwy 2	W	W	W	W
Basin 1, Gwy 4	W	W	W	W
Basin 2, Gwy 8	W	W	W	W
Basin 2, Gwy 11	W	W	W	W
Basin 3, Gwy 16	W	W	W	W
Basin 3, Gwy 19	W	W	W	W
Basin 4, Gwy 28	W	W	W	W
Basin 4, Gwy 31	W	W	W	W
Basin 5, Gwy 33	W	W	W	W
Basin 5, Gwy 34	W	W	W	N/A

KEY
W = Working
NW = Not Working
N/A = Not Applicable

California, Los Angeles, Long Beach, Inner Harbor

July 2020

N 33° 46.3' / W 118° 12.6'

