

MAC Report

April 2019



SUBMITTED BY THE MARINE BUREAU



TABLE OF CONTENTS

1. Marinas and Waterways
2. Beaches and Waterways
3. Marine Maintenance Work Order Graphs
4. Pump Out Inspection Report
5. Tide Table



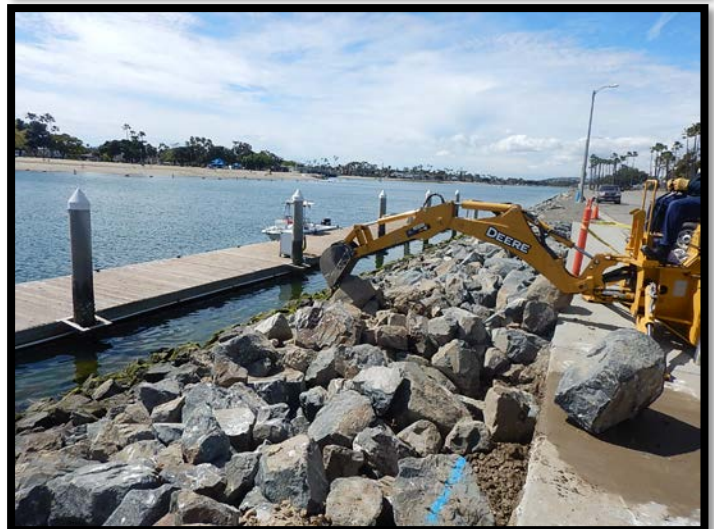
MARINAS AND WATERWAYS

Accomplishments

- ❖ Staff installed the sign at Station 35.
- ❖ Staff replaced all wooden trash enclosure gates at Davies Launch Ramp and Basins 1 & 2.
- ❖ Staff prepared and painted 18 benches at the Colorado Lagoon.
- ❖ Staff replaced and added hand dryers to all the restrooms throughout the Long Beach Shoreline Marina.
- ❖ Staff repaired the 2" water line in rip-wrap next to Davie's launch ramp.
- ❖ Staff installed and wired a LED exterior deterrent light near the B-6 concession stand.
- ❖ Staff removed existing and installed new solar powered navigational lights on the Appian Way bridge.
- ❖ Staff completed all bright work in preparation for the Acura Grand Prix of Long Beach 2019.

Projects in the works

- ❖ Staff is in the process of replacing all the damaged and missing signs throughout the Long Beach Shoreline Marina. Staff has already replaced all the "Gangway" and "No Visitor" signs. 90% completed.
- ❖ Staff is in the process of obtaining the calculations and engineering plans to retrofit the existing twelve (12) booster pumps from a wet system to a dry fire suppression system in the Long Beach Shoreline Marina.
- ❖ Staff is in the process of making improvements to the Alamitos Bay Marina office including: painting the interior of the building. 50% completed.



MARINAS AND WATERWAYS

- ❖ Staff is in the process of inspecting and tightening all the loose fingers throughout the Long Beach Shoreline Marina. 40% completed.
- ❖ Staff is in the process of replacing all the interior doors at the Alamitos Bay Marina office.
- ❖ Staff is in the process of inspecting and replacing all the damaged gangway water supply lines throughout the Long Beach Shoreline Marina, as needed. 45% completed.
- ❖ Staff is in the process of repairing the restroom plumbing throughout the Long Beach Shoreline Marina. 35% completed.
- ❖ Staff is in the process of repairing concrete fingers throughout the Long Beach Shoreline Marina. 10% complete.
- ❖ Staff is in the process of repairing all the damaged concrete behind Spinnaker Bay near the seawall.
- ❖ Staff is in the process of replacing all wooden trash enclosure gates at Basins 3 & 4.
- ❖ Staff is in the process of painting the pedestrian path. 5% complete.



BEACHES AND WATERWAYS

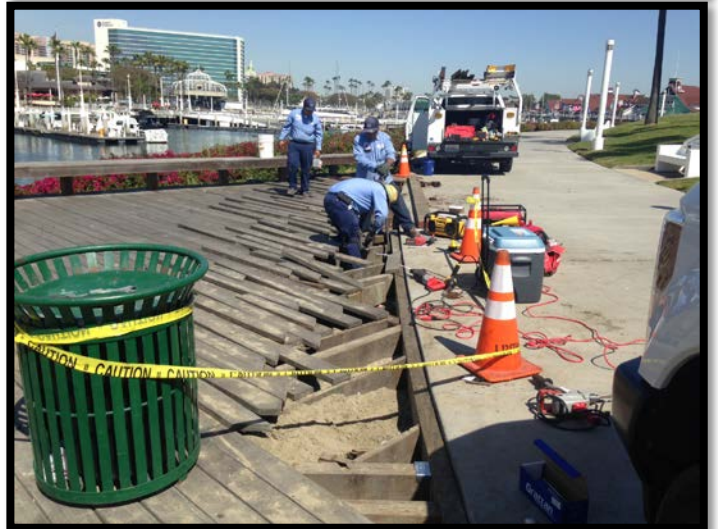
Accomplishments

- ❖ Beach Maintenance staff removed over 200 tons of trash and debris from the beaches and inner bays.
- ❖ Beach Maintenance staff serviced over 300 trash receptacles during the month of April.
- ❖ Beach Maintenance staff built up and maintained the berm on the East Peninsula beach front, depositing over 1,200 tons of sand for the month of April.
- ❖ Beach Maintenance staff swept the bike/pedestrian path.
- ❖ Beach Maintenance staff consolidated and transferred the storm debris to the dump site.
- ❖ Beach Maintenance staff completed the Bayside beach re-nourishment project.
- ❖ Beach Maintenance staff installed 100 feet of snowing fencing at 55th place.
- ❖ Beach Maintenance staff recovered 600 yards of sand using the material separator.
- ❖ Beach Maintenance staff tilled the volleyball court areas at Granada and Mother's Beach.
- ❖ Beach Maintenance staff removed over 400 yards of sand drift from Laverne & Granada parking lots, and 55th – 69th Place.
- ❖ Beach Maintenance staff coordinated the mainline repairs at Davies Launch Ramp.
- ❖ Beach Maintenance staff detailed the areas at Naples Island tennis courts.
- ❖ Beach Maintenance staff repaired the irrigation wires at Basin 6 North.
- ❖ Queensway Bay staff conducted a cleaning of all 60 basket filters in the Rainbow Lagoon; six days per week, twice per day. Staff replaces and cleans all 60 baskets once a month.
- ❖ Queensway Bay staff conducted daily removal of water borne debris and algae in the Rainbow Lagoon, Rainbow Harbor Marina and Long Beach Shoreline Marina using hand nets and a small skimmer boat.
- ❖ Queensway Bay staff mowed and detailed the Rainbow Lagoon Island grass area.
- ❖ Queensway Bay staff removed trash from all the docks, three times per week.



BEACHES AND WATERWAYS

- ❖ Queensway Bay staff conducted daily cleaning and maintenance of all trash skimmers on the docks, seven days per week.
- ❖ Queensway Bay staff worked with the Police Department to clean homeless encampments from the South Shore Launch Ramp park areas.
- ❖ Queensway Bay staff repaired the navigation light on the Queensway Bridge.
- ❖ Queensway Bay staff repaired 70 feet of wood decking sub structure and painted the light poles at Shoreline Aquatic Park.
- ❖ Queensway Bay staff conducted daily graffiti removal of the entire Rainbow Harbor area, including the Queensway bridge bike path and the Pier Point parking lot.
- ❖ Queensway Bay staff completed and closed 19 "Go Long Beach Request for graffiti removal in the month of April.
- ❖ Queensway Bay staff painted the exterior Lighthouse public restroom and Visitor Center building.
- ❖ Queensway Bay staff performed routine maintenance on the Wave and Dolphin Fountain 2-3 times per week.
- ❖ Queensway Bay staff conducted daily monitoring of the landscape crew.
- ❖ Queensway Bay staff responded to a few mainline breaks and coordinated the repairs.
- ❖ Queensway Bay staff worked with the contractor to replace the fence at Marina Green park.
- ❖ Queensway Bay staff prepared landscape areas for the Acura Grand Prix of Long Beach 2019.



BEACHES AND WATERWAYS

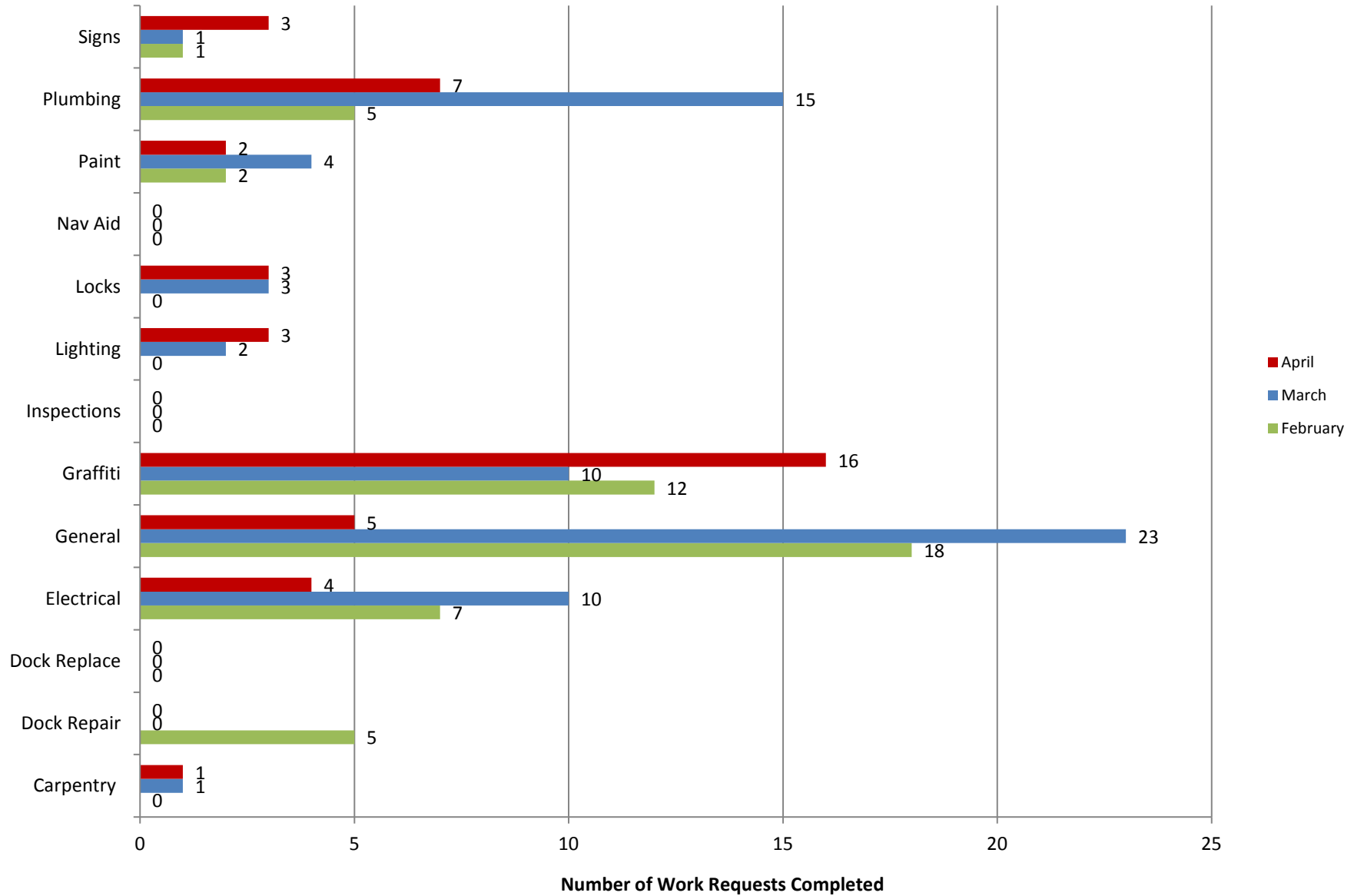
Projects in the works

- ❖ Beach Maintenance staff is continuing the process of rebuilding sections of the peninsula where erosion occurs.
- ❖ Beach Maintenance staff is in the process of centralizing the irrigation system.
- ❖ Beach Maintenance staff is in the process of landscaping the islands on Mole Road.
- ❖ Queensway Bay staff is in the process of upgrading the blue navigational lights throughout the Rainbow Harbor Marina to more energy efficient LED lights. 75% complete.
- ❖ Queensway Bay staff is in the process of replacing the light fixtures at the Navy Memorial.
- ❖ Queensway Bay staff is in the process of LED retrofitting 40 bollard lights throughout at the South Shore walkway. 75% complete.



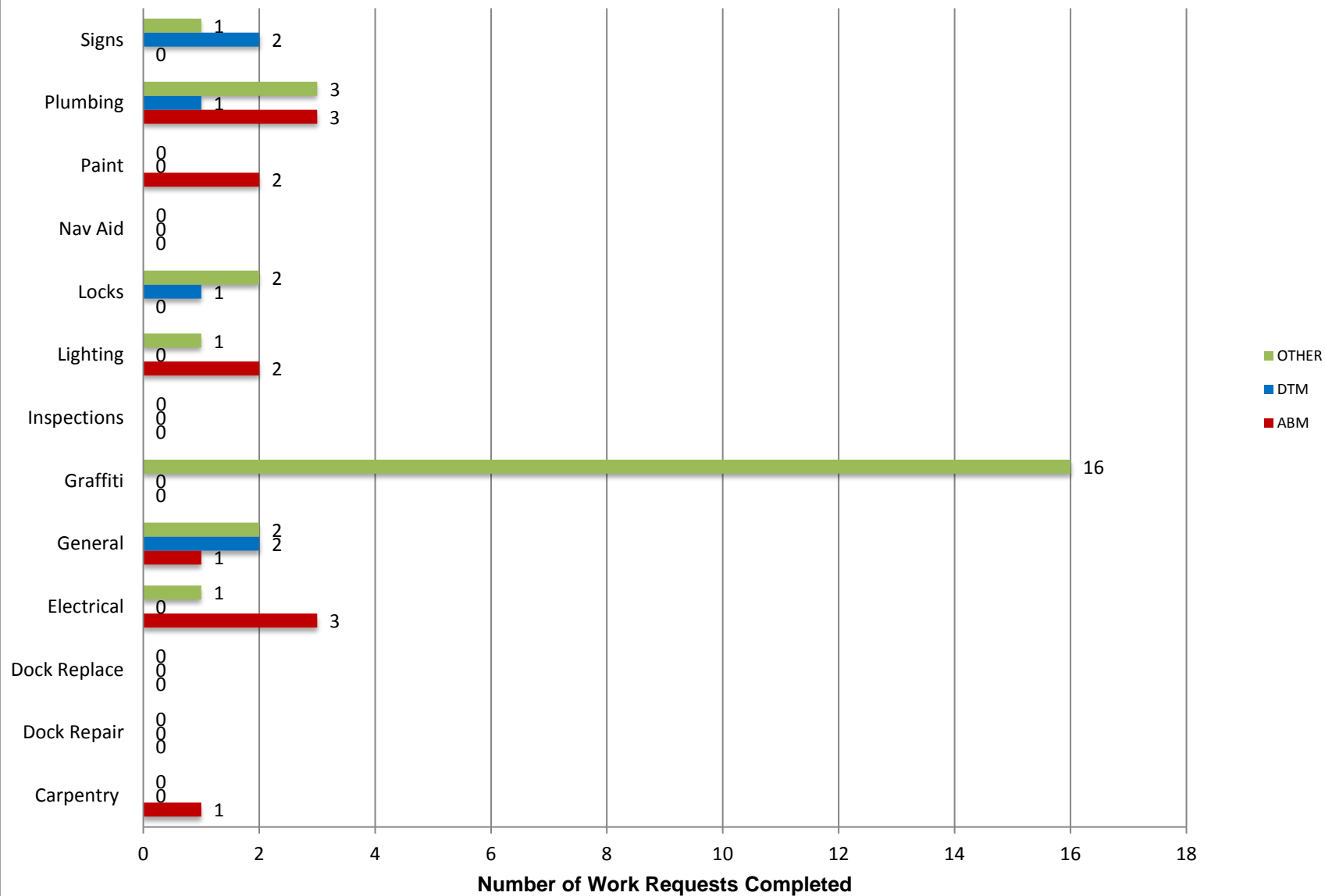
Marine Maintenance

Work Request Completed by Month



Marine Maintenance

Work Requests Completed by Location



PUMPOUT INSPECTION REPORT

Pump Out Location	Inspection Date			
	4/04/19	4/11/19	4/18/19	4/25/19
Gwy A, A	W	W	W	W
Gwy A, B	W	W	W	W
Parker's Public Dock, A	W	W	W	W
Parker's Public Dock, B	W	W	W	W
Parker's Public Dock, C	W	W	W	W
Dock 9	W	W	W	W
Basin 6 South	W	W	W	W
Davie's Launch Ramp, A	W	W	W	W
Station 31, A	W	W	W	W
Station 31, B	W	W	W	W
Station 21	W	W	W	W
Basin 1, Gwy 2	W	W	W	W
Basin 1, Gwy 4	W	W	W	W
Basin 2, Gwy 8	W	W	W	W
Basin 2, Gwy 11	W	W	W	W
Basin 3, Gwy 16	W	W	W	W
Basin 3, Gwy 19	W	W	W	W
Basin 4, Gwy 28	W	W	W	W
Basin 4, Gwy 31	W	W	W	W
Basin 5, Gwy 33	W	W	N/A	W
Basin 5, Gwy 34	W	W	W	W

KEY
W = Working
NW = Not Working
N/A = Not Applicable

N 33° 46.3' / W 118° 12.6'

