

MAC Report

June 2018



SUBMITTED BY THE MARINE BUREAU



TABLE OF CONTENTS

1. Marinas and Waterways
2. Beaches and Waterways
3. Marine Maintenance Work Order Graphs
4. Pump Out Inspection Report
5. Tide Table



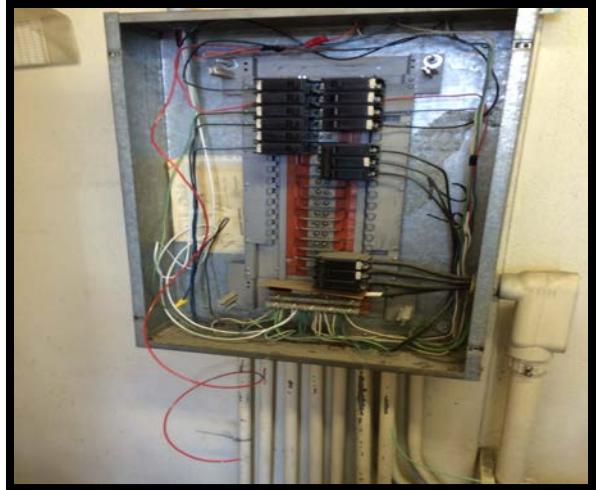
MARINAS AND WATERWAYS

Accomplishments

- ❖ Staff retrofitted the interior and exterior restroom lights with LED fixtures at the B-72 public restroom.
- ❖ Staff installed a new gate at Shoreline Village.
- ❖ Staff installed 10 feet of wrought iron fence panel at Basin 8 in the Alamitos Bay Marina.
- ❖ Staff replaced the swim lines at Mother's beach and the lower bay.
- ❖ Completed the fumigation of the Marine Maintenance building.

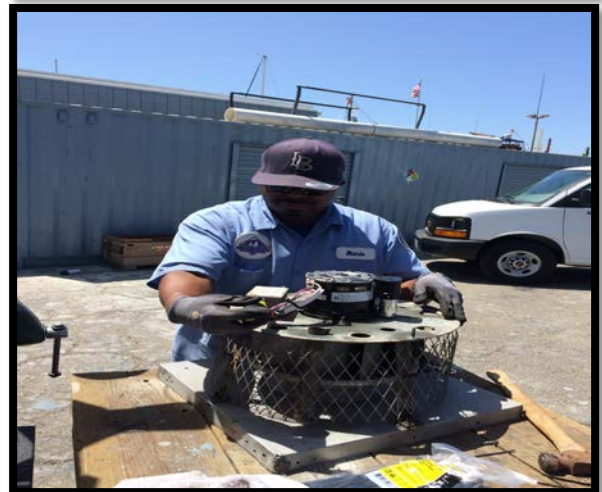
Projects in the works

- ❖ Staff is in the process of replacing all the damaged and missing signs throughout the Long Beach Shoreline Marina. Staff has already replaced all the "Gangway" and "No Visitor" signs. 90% completed.
- ❖ Staff is in the process of obtaining the calculations and engineering plans to retrofit the existing twelve (12) booster pumps from a wet system to a dry fire suppression system in the Long Beach Shoreline Marina.
- ❖ Staff is in the process of making improvements to the Alamitos Bay Marina office including: painting the interior of the building. 50% completed.
- ❖ Staff is in the process of replacing the swim lines along Bayshore.
- ❖ Staff is in the process of inspecting and tightening all the loose fingers throughout the Long Beach Shoreline Marina. 40% completed.
- ❖ Staff is in the process of replacing and adding hand dryers to all the restrooms throughout the Long Beach Shoreline Marina. 30% completed.
- ❖ Staff is in the process of replacing all the interior doors at the Alamitos Bay Marina office.
- ❖ Staff is in the process of replacing the "Boat Owner's Restricted" and the "Stop" signs in the Alamitos Bay Marina. 90% and 90% complete.
- ❖ Staff is in the process of inspecting and replacing all the damaged gangway water supply lines throughout the Long Beach Shoreline Marina, as needed. 45% completed.
- ❖ Staff is in the process of repairing the restroom plumbing in the Long Beach Shoreline Marina. 30% completed.



MARINAS AND WATERWAYS

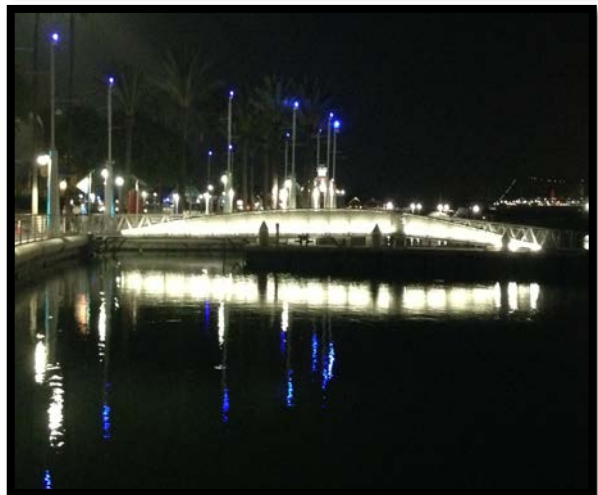
- ❖ Staff is in the process of repairing the concrete fingers throughout the Long Beach Shoreline Marina. 10% complete.
- ❖ Staff is in the process of refurbishing the rowing center dock at the Marine Stadium entrance. 50% complete.
- ❖ Staff is in the process of servicing all the buoys at Alamitos Bay Marina, the beach waterline, and the Long Beach Shoreline Marina. 50% completed.
- ❖ Staff is in the process of repairing the boatowner restroom roofs in the Long Beach Shoreline Marina.
- ❖ Staff is in the process of repairing the flagpole at Station 31.
- ❖ Staff is in the process of painting the interior and exterior restrooms along the beaches, Bayshore 1 & 2, and Mother's beach. 20% completed.



BEACHES AND WATERWAYS

Accomplishments

- ❖ Beach Maintenance staff removed over 34.35 tons of trash and debris from the beaches and inner bays and 119.07 tons from the beach water lines.
- ❖ Beach Maintenance staff swept and removed over 3.5 miles of windblown sand from the bike paths, pedestrian paths, sidewalks at the beach access ways, and parking lots.
- ❖ Beach Maintenance staff serviced over 1,389 trash receptacles during the month of June.
- ❖ Beach Maintenance staff put over 113 additional trash receptacles on our beaches for the anticipation of the summer crowds.
- ❖ Beach Maintenance staff built up and maintained the berm on the East Peninsula beach front, depositing over 9,000 cubic yards of sand between 65th and 72nd Place.
- ❖ Queensway Bay staff conducted a cleaning of all 60 basket filters in the Rainbow Lagoon; six days per week, twice per day. Staff replaces and cleans all 60 baskets once a month.
- ❖ Queensway Bay staff conducted daily removal of water borne debris and algae in the Rainbow Lagoon, Rainbow Harbor Marina and Long Beach Shoreline Marina using hand nets and a small skimmer boat.
- ❖ Queensway Bay staff trimmed the grass area at the Rainbow Lagoon Island.
- ❖ Queensway Bay staff cleaned an 8" main fill pipe at the Rainbow Lagoon.
- ❖ Queensway Bay staff assisted with the removal and service of the main fill submersible pump at the Rainbow Lagoon.
- ❖ Queensway Bay staff removed trash from all the docks, three times per week.
- ❖ Queensway Bay staff conducted daily cleaning and maintenance of all trash skimmers on the docks, seven days per week.
- ❖ Queensway Bay staff inspected the beach boardwalk, Pine Avenue Pier, and Rainbow Harbor docks for maintenance issues monthly. Staff also performed inspections of the public elevator daily.
- ❖ Queensway Bay and Marine Maintenance staff replaced the decking and substructure at fishing pier #1 in the Rainbow Harbor Marina.

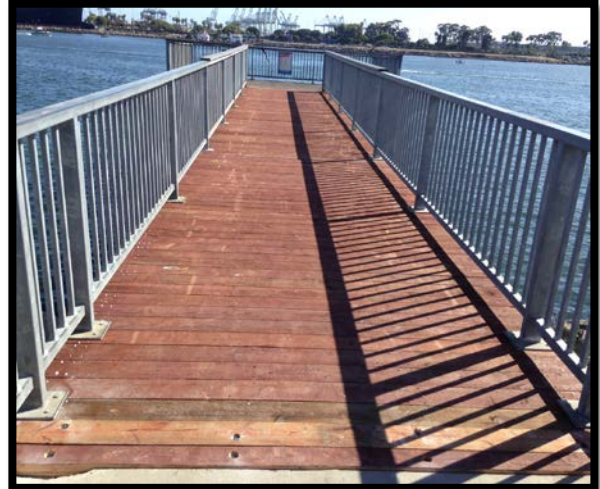
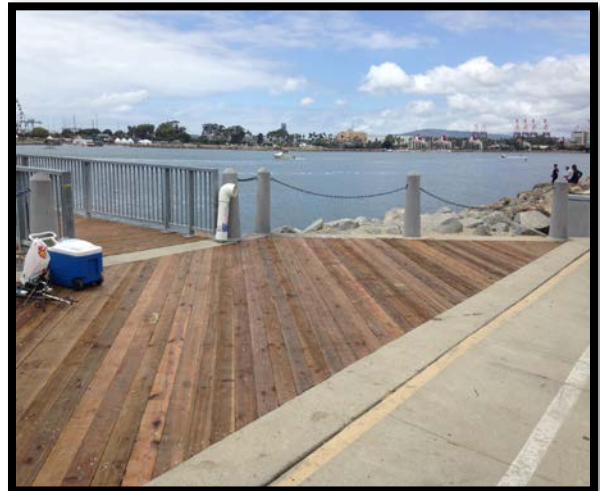
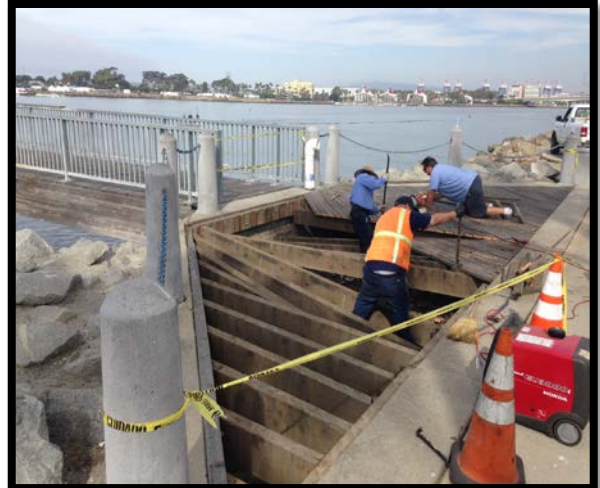


BEACHES AND WATERWAYS

- ❖ Queensway Bay staff upgraded all gangway lights throughout Rainbow Harbor Marina to more energy efficient LED lights.
- ❖ Queensway Bay staff worked with Public Works electrician to replace two (2) power pedestals at Dock #2 in the Rainbow Harbor Marina.
- ❖ Queensway Bay staff cleaned and serviced the exit teeth at the South Shore parking lot.
- ❖ Queensway Bay staff conducted daily graffiti removal of the entire Rainbow Harbor area, including the Queensway bridge bike path and the Pier Point parking lot.
- ❖ Queensway Bay staff completed and closed 22 "Go Long Beach Request for graffiti removal in the month of June.
- ❖ Queensway Bay staff performed routine maintenance on the Wave and Dolphin Fountain on a weekly basis.
- ❖ Queensway Bay staff monitored the fabrication and installed four (4) new intake baskets at the Wave Fountain Reservoir.
- ❖ Queensway Bay staff provided two (2) new sump pumps, air compressors and one (1) air dryer to the contractor for installation.
- ❖ Queensway Bay staff conducted daily monitoring of the landscape crew.
- ❖ Queensway Bay staff worked with special events and filming for irrigation shut offs on a weekly basis.
- ❖ Queensway Bay staff monitored new quarterly planting of flowers at the Dolphin Fountain and near the park entrance signs.

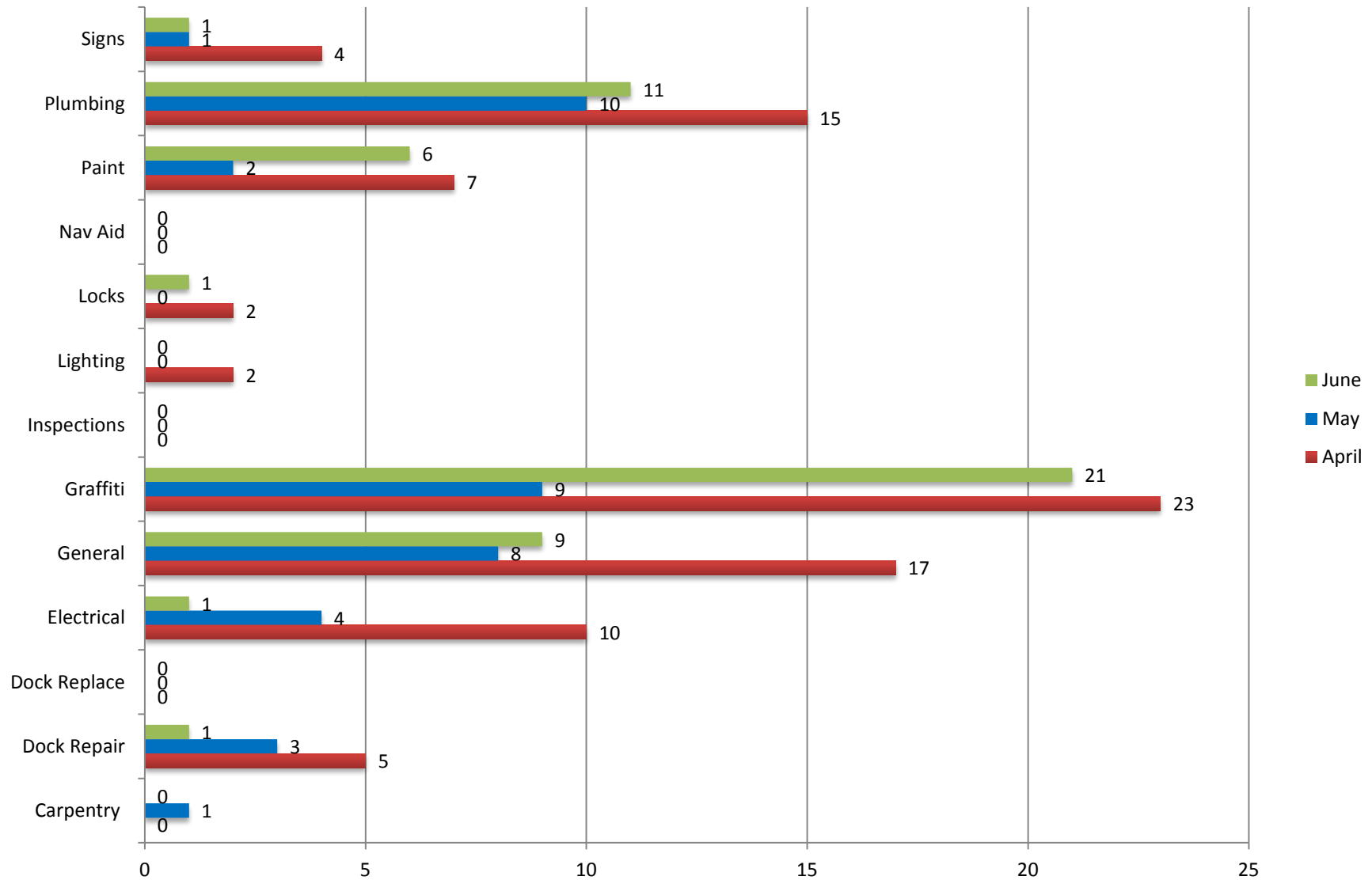
Projects in the works

- ❖ Beach Maintenance staff is continuing the process of rebuilding sections of the peninsula where erosion occurs.
- ❖ Queensway Bay staff is in the process of upgrading the blue navigational lights throughout the Rainbow Harbor Marina to more energy efficient LED lights. 70% complete
- ❖ Queensway Bay staff is in the process of replacing the light fixtures at the Navy Memorial.



Marine Maintenance

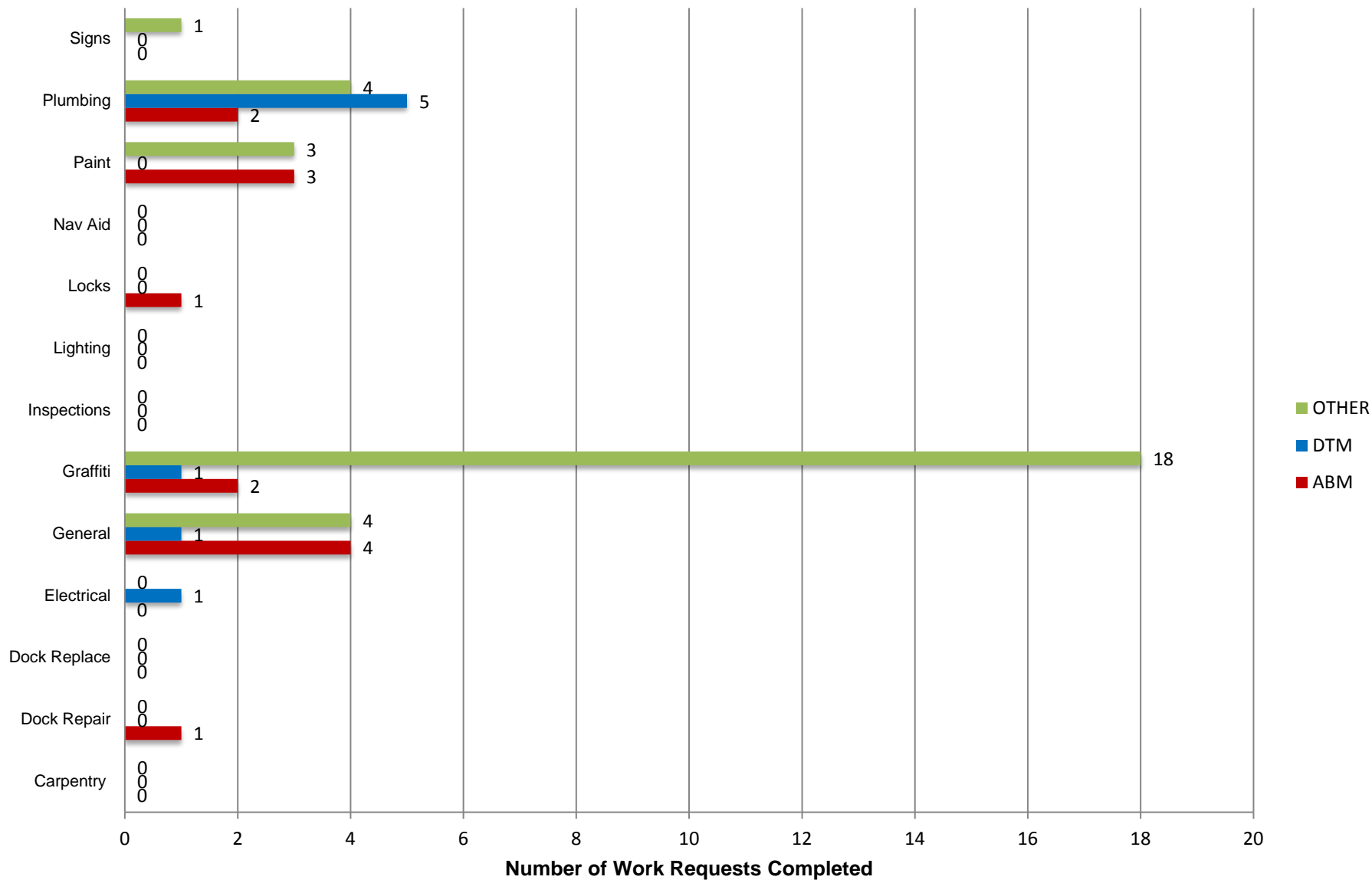
Work Request Completed by Month



Number of Work Requests Completed

Marine Maintenance

Work Requests Completed by Location



PUMPOUT INSPECTION REPORT

Pump Out Location	Inspection Date			
	6/7/18	6/14/18	6/21/18	6/28/18
Gwy A, A	W	W	W	W
Gwy A, B	W	W	W	W
Parker's Public Dock, A	W	W	W	W
Parker's Public Dock, B	W	W	W	W
Parker's Public Dock, C	W	W	W	W
Dock 9	W	W	W	W
Basin 6 South	W	W	W	W
Davie's Launch Ramp, A	W	W	W	W
Station 31, A	W	W	W	W
Station 31, B	W	W	W	W
Station 21	W	W	W	W
Basin 1, Gwy 2	W	W	W	W
Basin 1, Gwy 4	W	W	W	W
Basin 2, Gwy 8	W	W	W	W
Basin 2, Gwy 11	W	W	W	W
Basin 3, Gwy 16	W	W	W	W
Basin 3, Gwy 19	W	W	W	W
Basin 4, Gwy 28	W	W	W	W
Basin 4, Gwy 31	W	W	W	W
Basin 5, Gwy 33	W	W	W	W
Basin 5, Gwy 34	W	W	W	W

KEY
W = Working
NW = Not Working
N/A = Not Applicable

N 33° 46.3' / W 118° 12.6'

