



HSAC – Emergency Response Update

June 21, 2023

Progress on Goals and Metrics

Increase interim and long-term housing access

- Announcement of the intent to purchase 702 W. Anaheim to be an ongoing emergency shelter, with a vote by City Council on June 13th that approved the pursued purchase of the building. \$6.5 million in funding is being committed from the County through Measure H funds.
- 100% utilization of Emergency Housing Vouchers
- Staff worked to identify options for the current round of Project Homekey

Progress on Goals and Metrics

Increase access to services

- Safe parking was moved from Queensway near the Queen Mary down the street to the Southshore Launch ramp
- The Homeless Services Bureau is finalizing a plan to rollout the utilization of the 2nd MAC, however, needs to hire additional staff to have the 2nd MAC out on a full schedule.



Mobile Access Center:
1,278 Interactions
703 Engaged in Services



Safe Parking:
1,482 Vehicle Nights
Avg 17 Vehicles in June
Avg's have fluctuated



Multi Service Center:
18,016 Interactions
Avg 177 people per day

Progress on Goals and Metrics

Engage Community in data, planning and assistance

- Dashboard was updated on June 8th to include data for May.
- Scheduled for Thursday, June 22 the Interfaith Convening with faith-based organizations across the City who are committed to supporting the efforts of not only the emergency response, but ongoing after the emergency has been lifted



Dashboard Elements:
57 Data Points



Outreach Events:
15 Events



Donations:
13 Sites



Donated Items:
13,270 items
7,267 items distributed



LONG BEACH
DEPARTMENT OF HEALTH
AND HUMAN SERVICES

CITY OF
LONG BEACH

Progress on Goals and Metrics

Build capacity to address homelessness crisis

- Governor Newsom and staff visit Long Beach to meet participants and staff from Encampment Resolution Fund grant. Long Beach is highlighted as one of communities from round one that has made good progress with its encampment resolution program.
- The Intergovernmental Work Group has identified leads to coordinate the various “policy pathways” and drafted a framework to guide the City’s work as it relates to prevention policy
- All Public Health Nurse positions within the Homeless Services Bureau have been filled



City Staff Reassigned:
146



Reassigned Staffing:
11,480 Hours

Community Organizations:
56 Signed up



New Grants:
\$31M in Applications
\$5.2M Received



LONG BEACH
DEPARTMENT OF HEALTH
AND HUMAN SERVICES

CITY OF
LONG BEACH

Project Homekey and Homelessness Response Projects Status

Project Homekey & Homelessness Response Projects

Site	Project Scope	Interim Housing Beds
Former Luxury Inn	Acquisition and conversion of the Luxury Inn to non-congregate interim housing	78
Former Best Western*	Common area upgrades of existing Project Homekey facility to improve supportive service provision	99
Youth Navigation Center	Conversion of warehouse space to homeless services space, including 12 youth shelter beds and safe property storage facilities	12
MSC Tiny Homes	Purchase and installation of modular non-congregate shelter units (i.e., "Tiny Homes") for interim housing use at the Long Beach Multi-Service Center, along with site improvements	33
Total Beds		222

**Site currently operating*

Luxury Inn Conversion

Luxury Inn

The Luxury Inn at 5950 Long Beach Blvd. will have 78 rooms for interim housing. The renovations include:

- New decorative perimeter fencing and replacement of existing planter railing with decorative railing.
- Exterior painting, new doors, and new fire sprinkler and alarm system.
- Accessible improvements for parking and in rooms.
- Renovated rooms will receive new bathrooms with water efficient toilets and sinks.
- New energy efficient LED lighting, flooring and painting will give the rooms a refresh.
- New pet area.
- A new modular trailer will be located at the site to house case management and other support staff.

Existing Conditions

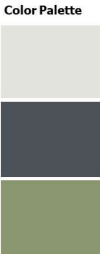


Luxury Inn

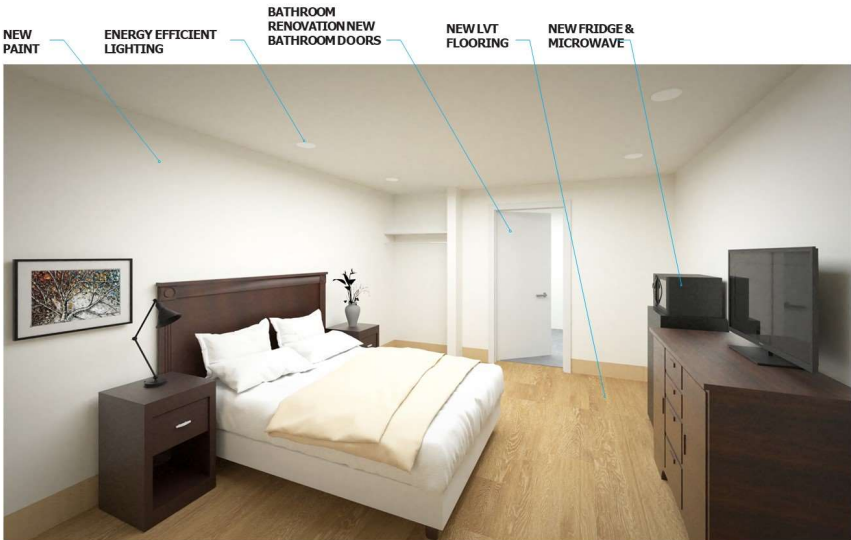


Luxury Inn

LUXURY INN - EXTERIOR REFRESH



LUXURY INN - INTERIOR ROOM RENOVATION



Programming

- Community outreach and engagement plan has been prepared, and is underway
- The Former Luxury Inn site will provide non-congregate temporary housing with on-site supportive services, including a private room and bathroom for all participants
- Program will serve adults experiencing homelessness, prioritizing those experiencing chronic homelessness, who are being connected with permanent housing resources
- All participants will be assessed and referred through the Coordinated Entry System
- Interim Housing Operations and Supportive Services will be provided by First to Serve Ministries, Inc.
- On-site supportive services will include individualized case management, meals, transportation, and linkages to physical and mental health care, substance use disorder services, employment training, benefits enrollment
- Location will be supervised with security 24 hours a day, 7 days a week

Former Best Western Upgrades

Best Western

The Best Western at 1725 Long Beach Blvd. has 99 rooms for interim housing. The project renovations include:

- Reconfigurations to the lobby and surrounding 1st floor areas to better accommodate facility operations.
- Common areas that previously served as a dining area, a fitness center, and a front desk for the hotel will be converted to offices for caseworkers, a nurse, and other on-site support staff.
- Select rooms on the 2nd floor will be converted to a resident's lounge and additional staff working space.
- New flooring, paint, energy efficient light fixtures throughout hallways and common spaces.
- Improved accessibility from the street.
- Exterior improvements include demolition of the existing pool and converting the space into a new outdoor community space for residents.
- Updated fire alarm system.

Existing Conditions



Best Western

BEST WESTERN - LOBBY REFRESH

welcome home



FEATURE WALL SIGN



Materials Board



New Tile Flooring



BEST WESTERN MATERIALS PALETTE

BEST WESTERN - NEW LOBBY PLAN



LVT FLOORING



CASEWORKER'S DESKS



PARTIAL HEIGHT PARTITIONS

BEST WESTERN MATERIALS PALETTE

Best Western

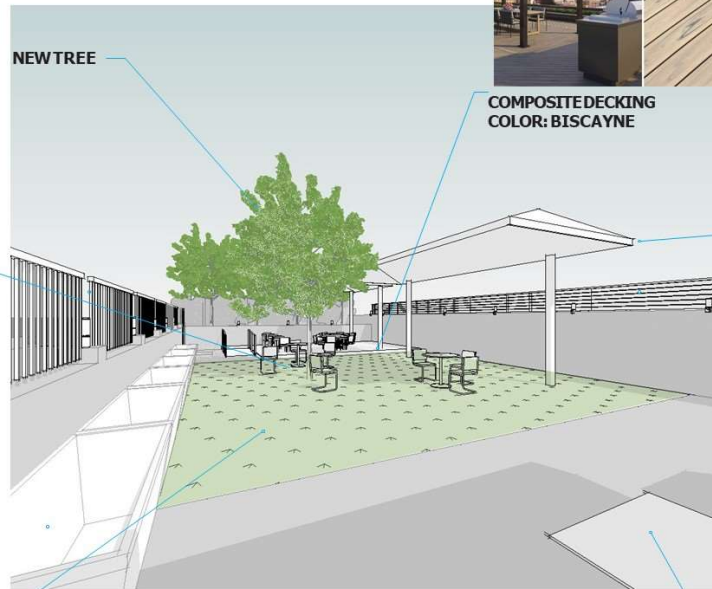
BEST WESTERN - OUTDOOR PARK/DECK DESIGN



COLORFUL OUTDOOR FURNITURE



PET FRIENDLY ARTIFICIAL TURF



NEW TREE



COMPOSITE DECKING
COLOR: BISCAYNE



NEW SHADE STRUCTURE



RAISED PLANTER BEDS FOR COMMUNITY GARDEN



BBQ AND PICNIC TABLES

BEST WESTERN MATERIALS PALETTE

Programming

- The Project Homekey (former Best Western) site provides non-congregate temporary housing with on-site supportive services
 - Site was purchased and converted through Homekey Program Round 1, opening for operations in March 2021
- Improvements will enhance supportive services by creating case management and administrative office space, improved communal areas and outdoor space, and crucial facility maintenance
- Program serves adults experiencing homelessness, prioritizing those experiencing chronic homelessness, who are being connected with permanent housing resources
- On-site supportive services include individualized case management, meals, transportation, and linkages to physical and mental health care, substance use disorder services, employment training, benefits enrollment
- Location is supervised with security 24 hours a day, 7 days a week

Youth Navigation Center

Navigation Center

The Navigation Center at 1718-1722 Hayes Ave. will have 12 beds and 59 storage lockers. The renovations include:

- Renovation of an existing facility for youth homeless services.
- Daily storage allows for participants to leave belongings and go to work.
- New interior walls, doors, shower rooms, remodel existing restrooms.
- New interior ceiling, energy efficient lighting, upgraded power, and exterior painting.
- Storefront façade improvements with new glazing, painting and other frontage improvements.
- New roof and HVAC.



EXISTING WEST FACADE



FINISH PALETTE



WEST FACADE IMPROVEMENTS

Navigation Center



FINISH PALETTE



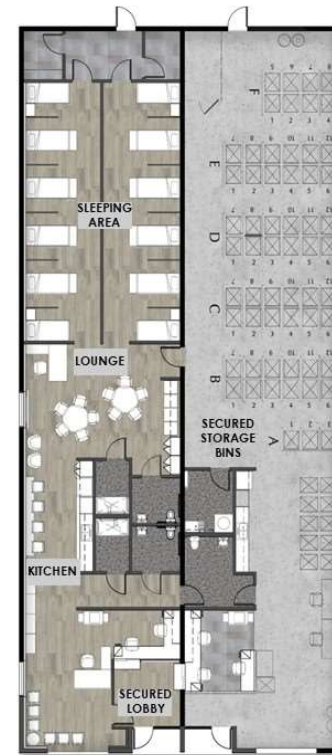
SLEEPING POD CONCEPT



EXISTING INTERIOR



ACCESSIBLE SHOWERS



PROPOSED IMPROVEMENTS

Navigation Center



COMMUNAL LOUNGE

Programming

- The Navigation Center will provide 12 congregate shelter beds for Transition Age Youth experiencing homelessness who are being connected with permanent housing options
- The site is designed to have less beds to create an environment that is conducive and supportive of transitional aged youth and building a community of support
- The Navigation Center will also provide storage lockers for use by all homeless services participants for safe storage of belongings while engaging in services at the Long Beach Multi-Service Center as well as other programming. Storage will be required to be renewed every 2 weeks
- Supportive services will include individualized case management, meals, and linkages to physical and mental health care, substance use disorder services, employment training, and benefits enrollment.
- Location will be supervised with staff and security 24 hours a day, 7 days a week

MSC Tiny Homes

Multi-Service Center – Tiny Homes

The Multi-Service Center – Tiny Homes located at 1201 W. 12th Street will have 27 standard studios and 6 accessible studios. The project will include:

- Utilizing the parking lot space to place the modular units.
- Creating a space to house residents within a tiny home village that will have a guard station.
- Drought tolerant landscaping, exterior LED lighting, and bicycle parking.
- The studios will have their own bathroom and shower.
- Creative wayfinding will help identify the spaces and locations for each unit.



Site Plan

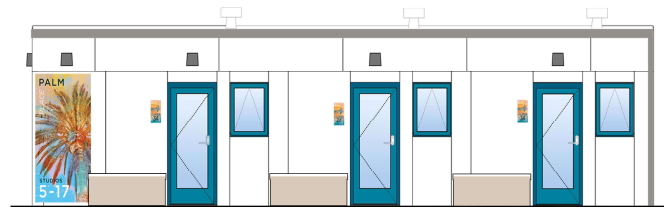
Multi-Service Center – Tiny Homes



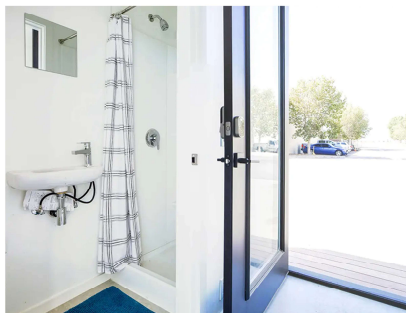
ACCESSIBLE STUDIO



STANDARD STUDIO



RENDERED ELEVATION WITH SIGNAGE



EXAMPLE BATHROOM



EXAMPLE BED PLATFORM WITH STORAGE



EXAMPLE UNIT DESIGN AND DECKING

Programming

- The MSC Tiny Homes will provide non-congregate temporary housing with on-site supportive services through the Long Beach Multi-Service Center
- Program will serve adults experiencing homelessness, prioritizing those experiencing chronic homelessness, who are being connected with permanent housing resources
- Each modular unit will have its own restroom and shower, HVAC, and fire sprinklers. Site amenities will include communal outdoor areas and seating, pet run, bike racks, lighting, and controlled entry.
- On-site supportive services include individualized case management, meals, transportation, medical clinic, and linkages to physical and mental health care, substance use disorder services, employment training, and benefits enrollment.
- Location will be supervised with staff and security 24 hours a day, 7 days a week

Project Homekey & Homelessness Response Projects

Project Budget & Schedule

Site	Total Project Cost	Target Construction Start
Luxury Inn	\$6,700,000	Summer 2023
Best Western	\$5,100,000	Summer 2023
Navigation Center	\$3,700,000	Summer 2023
MSC Tiny Homes	\$5,403,953	Summer 2023
TOTAL	\$20,903,953*	

**Additional funding may be needed for capital improvements. Construction documents are being finalized.*



Thank you

**Department of Health and Human
Services**
Homeless Services Bureau



LONG BEACH
DEPARTMENT OF HEALTH
AND HUMAN SERVICES

CITY OF
LONG BEACH