

MAC Report

April 2023

SUBMITTED BY THE MARINE BUREAU

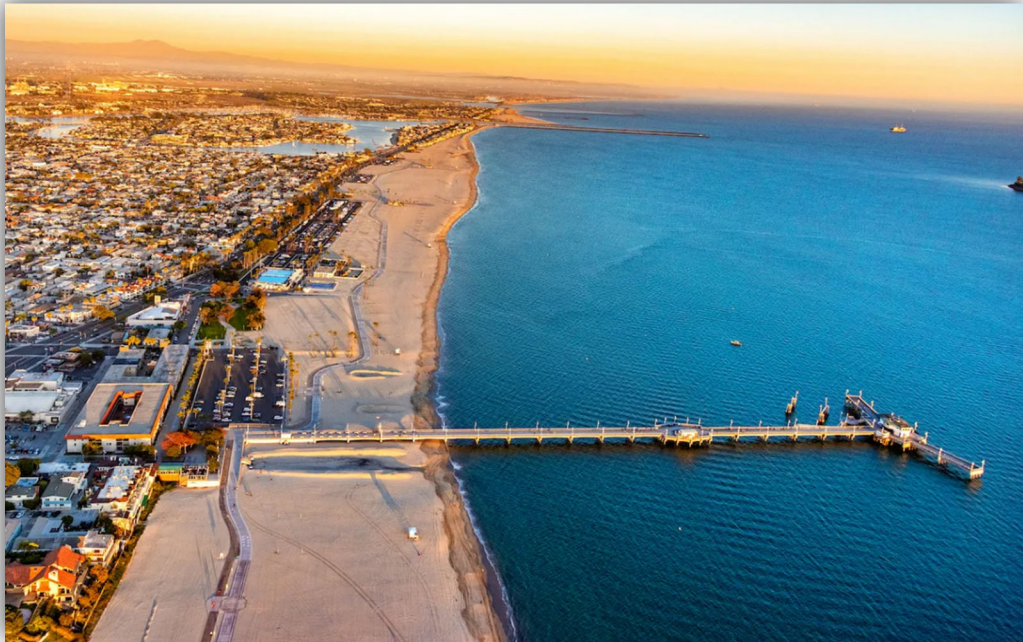


TABLE OF CONTENTS

1. Marinas and Waterways
2. Beaches and Waterways
3. Marine Maintenance Work Order Graphs
4. Pump Out Inspection Report
5. Tide Table



MARINAS AND WATERWAYS

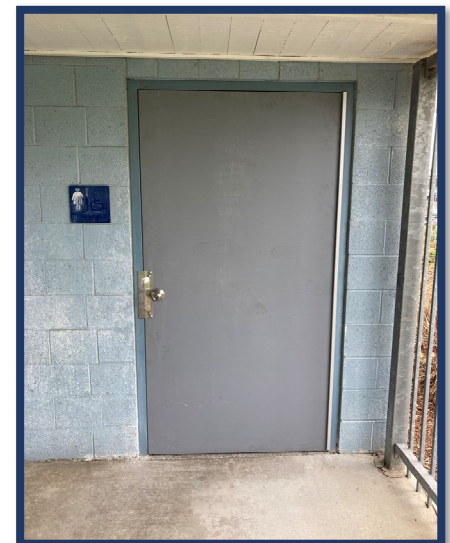
Accomplishments

- ❖ Staff have primed and painted containers for the Homeless Response- Safe Parking Zone.
- ❖ Staff replaced and painted doors at B-2 restroom.
- ❖ Staff completed replacing fascia boards at Davies launch ramp.
- ❖ Staff completed replacing the doors at B-2 Public Restrooms.
- ❖ Staff has completed sign for city council member Kristana Duggan.
- ❖ Staff has completed door installation in basin 8 boat owners' restrooms.
- ❖ Staff installed turn buoy in marine stadium and the A-buoy at the opening of the channel.
- ❖ Staff replaced navigation light at Appian way bridge.
- ❖ Staff has replaced flags at The Belmont Pier and Belmont Pier parking lot.
- ❖ Staff has repaired Shoreline bike and pedestrian path in Downtown.
- ❖ Staff has replaced gates at D-1, D-3, and D-4 Downtown boat owner's restrooms.
- ❖ Staff has replaced Basin 8 boat owners restroom doors.
- ❖ Staff has completed repairing the Mother's Beach Swim Dock.



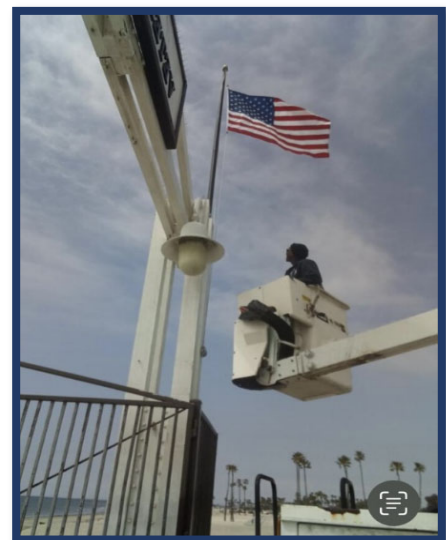
Projects in the Works

- ❖ Staff is in the process of replacing all the damaged and missing signs throughout the Long Beach Shoreline Marina. Staff has already replaced all the "Gangway" and "No Visitor" signs. 90% completed.
- ❖ Staff is in the process of retrofitting the existing twelve (12) booster pumps from a wet system to a dry fire suppression system in the Long Beach Shoreline Marina. 95% completed.
- ❖ Staff is in the process of making improvements to the Alamitos Bay Marina office including painting the interior of the building. 50% completed.
- ❖ Staff is in the process of inspecting and tightening all the loose fingers throughout the Long Beach Shoreline Marina. 40% completed.



MARINAS AND WATERWAYS

- ❖ Staff is in the process of inspecting and replacing all the damaged gangway water supply lines throughout Long Beach Shoreline Marina as needed. 45% completed.
- ❖ Staff is in the process of repairing the restroom plumbing throughout Long Beach Shoreline Marina. 35% completed.
- ❖ Staff is in the process of repairing concrete fingers throughout Long Beach Shoreline Marina. 10% completed.
- ❖ Staff is in the process of replacing exterior doors at the Belmont Pool office. 50% completed.
- ❖ Staff is in the process of painting memorial benches in ABM. 50% completed.
- ❖ Staff is in the process of installing two isolation valves for all 31 Gangway's in Shoreline Marina. 85% completed.
- ❖ Staff is in the process of replacing all electrical components (breakers, receptacles, etc.) inside the pedestals located throughout Shoreline & Rainbow Harbor Marinas. 25% completed.
- ❖ Staff is in the process of installing two isolation valves for all 33 Gangway's in Shoreline Marina. 85% completed.
- ❖ Staff is in the process of retrofitting all pedestals inside of Rainbow Harbor Marina (SHM 1,2,3,4 docks 8 & 9) 35% completed.
- ❖ Staff is in the process of painting curbs and guard post throughout DTM. 85% completed.
- ❖ Staff is in the process of cleaning buoys in ABM and DTM Marina's. 80% completed.



BEACHES AND WATERWAYS

Accomplishments

- ❖ Beach Maintenance staff removed over 306.12 tons of trash and debris from the beaches and inner bays.
- ❖ Beach Maintenance staff hauled sand to peninsula, rebuilding from high tides and elevated surf.
- ❖ Beach Maintenance staff serviced 220 trash receptacles during the month of April.
- ❖ Beach Maintenance staff swept the bike/pedestrian path.
- ❖ Beach Maintenance staff conducted weekly cleanups of several homeless encampments throughout the beach areas.
- ❖ Beach Maintenance staff raked and cleaned throughout beach areas.
- ❖ Beach Maintenance staff aerated and fertilized all parks.
- ❖ Beach Maintenance staff planted 2, 36-inch Torrey pine trees at Mother's Beach.
- ❖ Beach Maintenance staff planted Grand Prix planters with replacement plants nightly, during race.
- ❖ Beach Maintenance staff installed new backflow at Beach Maintenance building.
- ❖ Beach Maintenance staff trimmed Brazilian Pepper trees at Bella Fontana Park.
- ❖ Beach Maintenance staff re-opened Colonnade and Treasure Island Parks after turf renovation.
- ❖ Beach Maintenance staff installed Queen Mary planters for Mayor's VIP gala.
- ❖ Beach Maintenance staff planted Armerias in Basin 3 planters.
- ❖ Queensway Bay staff conducted a cleaning of all 60 basket filters in the Rainbow Lagoon, six days per week, twice per day. Staff replaces and cleans all 60 baskets, once a month.
- ❖ Queensway Bay staff conducted daily removal of water borne debris and algae in the Rainbow Lagoon, Rainbow Harbor Marina, and Long Beach Shoreline Marina.



BEACHES AND WATERWAYS

- ❖ Queensway Bay staff removed trash from docks, three times per week.
- ❖ Queensway Bay staff installed 100' boom for temporary closure at Shoreline Marina.
- ❖ Queensway Bay staff conducted monthly inspections on all docks throughout Rainbow Harbor Marina.
- ❖ Queensway Bay staff serviced all sewage pumps on the commercial docks 1-6, monthly.
- ❖ Queensway Bay staff conducted weekly PEH encampment posting and cleanups.
- ❖ Queensway Bay staff conducted daily graffiti removal of the entire Rainbow Harbor area, including the Queensway bridge bike path and Queen Mary Park.
- ❖ Queensway Bay staff performed routine maintenance on the Wave and Dolphin Fountain twice per week.
- ❖ QWB crew removed 500' of winter boom, shack, buoys, and anchors from Rainbow Harbor entrance.
- ❖ Queensway Bay assisted Grand Prix to clear electrical conduit at Alamitos.
- ❖ Queensway Bay staff repaired and re-anchored 500 feet of storm debris boom in LA river.

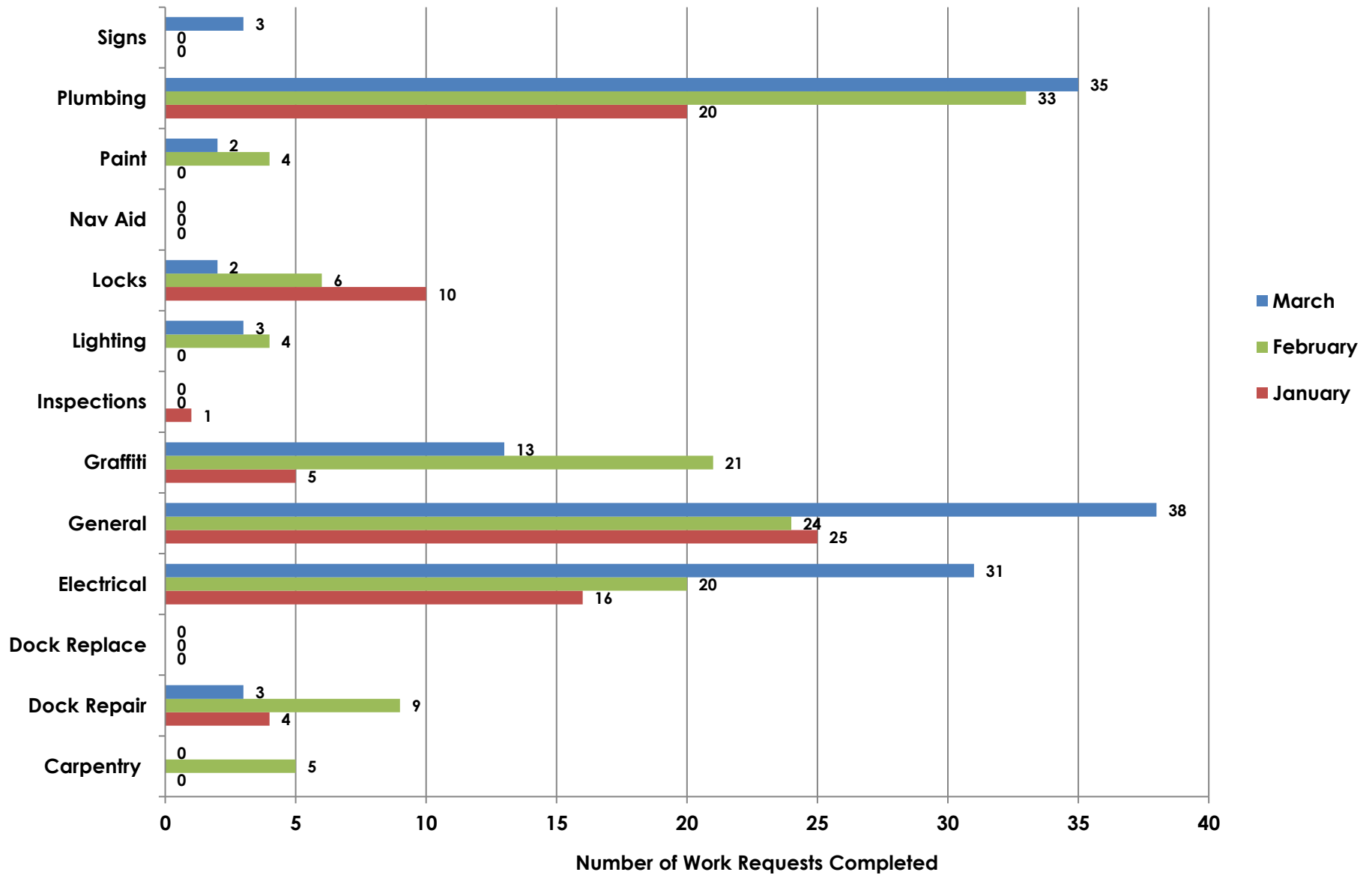


Projects in the Works

- ❖ Beach Maintenance staff is continuing the process of rebuilding sections of the peninsula where erosion occurs.
- ❖ QWB crew in the process of replacing LED color light in Esplanade mast poles.

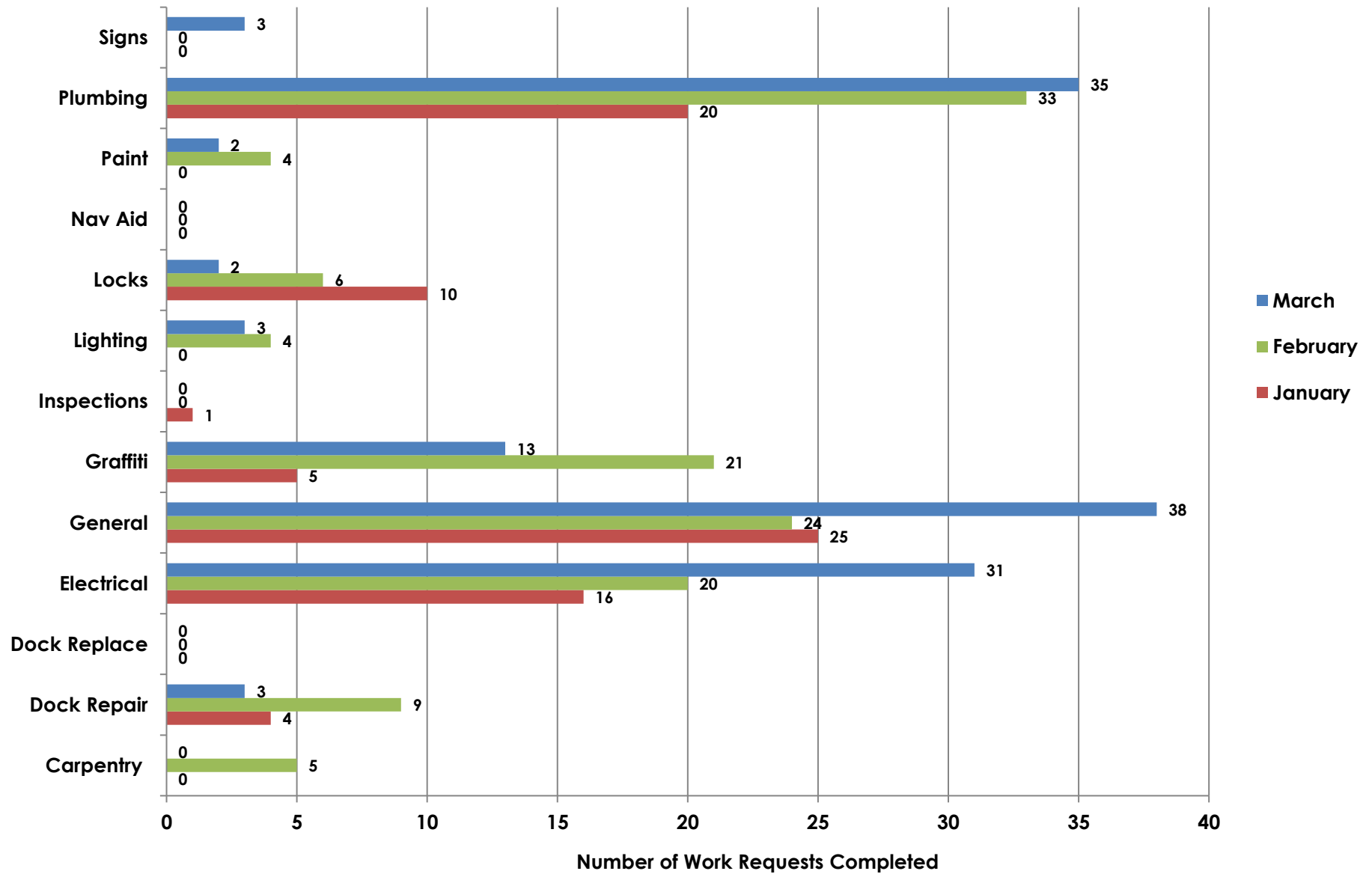
Marine Maintenance

Work Request Completed by Month



Marine Maintenance

Work Request Completed by Month

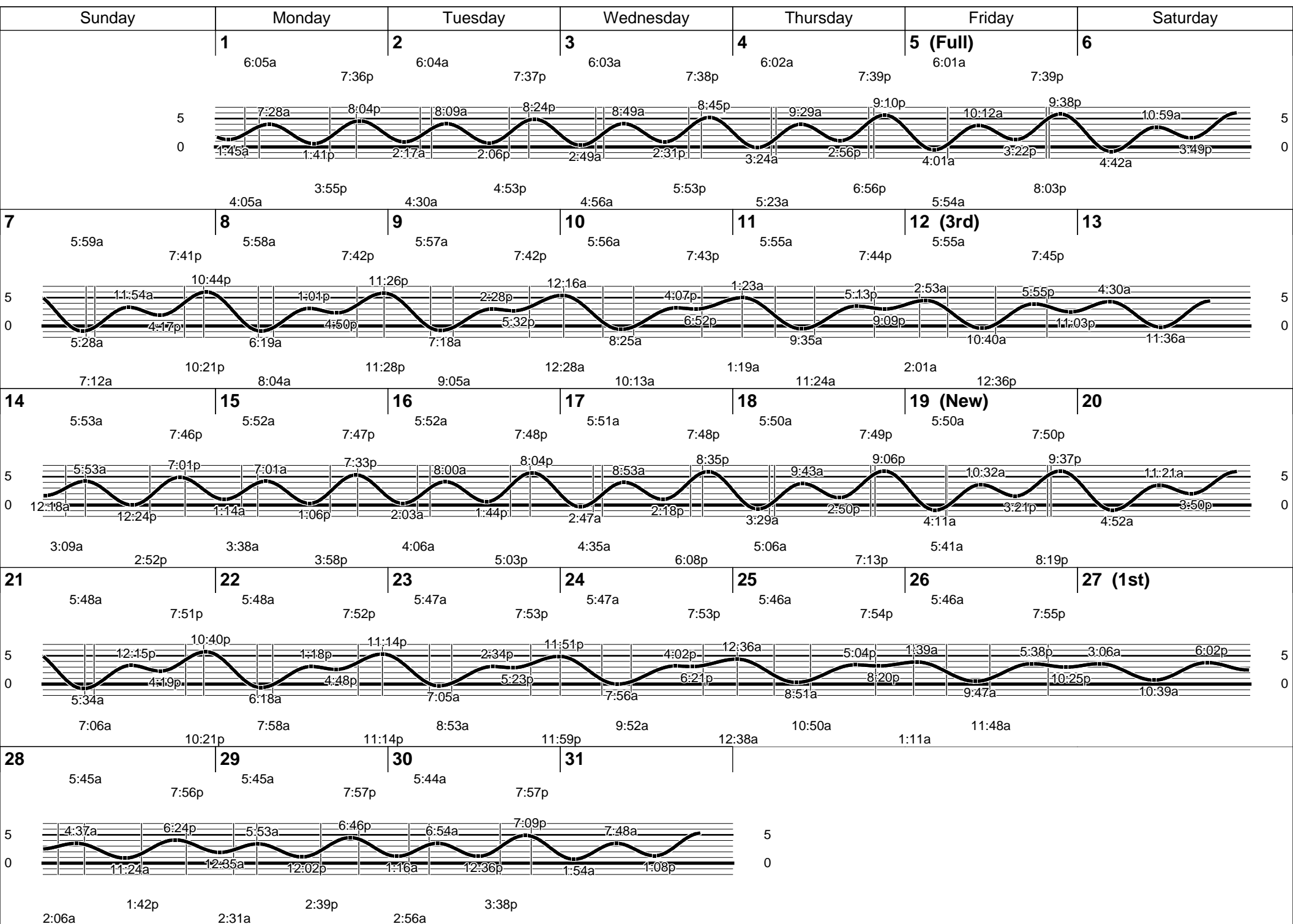


PUMPOUT INSPECTION REPORT

	04/06/23	04/13/23	04/20/23	04/27/23
Gwy A, A	W	NW	W	W
Gwy A, B	W	NW	W	W
Parker's Public Dock, A	NW	W	NW	W
Parker's Public Dock, B	W	W	W	W
Parker's Public Dock, C	W	NW	W	W
Dock 9	NW	NW	NW	W
Basin 6 South	W	W	W	W
Basin 6 North	W	W	W	W
Davie's Launch Ramp, A	W	W	W	W
Station 31, A	W	W	W	W
Station 31, B	W	W	W	W
Station 21	W	W	W	W
Basin 1, Gwy 2	W	W	W	W
Basin 1, Gwy 4	W	W	W	W
Basin 2, Gwy 8	W	W	NW	W
Basin 2, Gwy 11	W	W	NW	W
Basin 3, Gwy 16	W	W	W	W
Basin 3, Gwy 19	W	W	W	W
Basin 4, Gwy 28	W	W	W	W
Basin 4, Gwy 31	W	W	W	W
Basin 5, Gwy 33	NW	W	W	W
Basin 5, Gwy 34	W	W	W	W

KEY

W = Working
 NW = Not Working
 N/A = Not Applicable



MAC Report

May 2023

SUBMITTED BY THE MARINE BUREAU



TABLE OF CONTENTS

1. Marinas and Waterways
2. Beaches and Waterways
3. Marine Maintenance Work Order Graphs
4. Pump Out Inspection Report
5. Tide Table



MARINAS AND WATERWAYS

Accomplishments

- ❖ Staff has restriped Downtown Shoreline Marina pedestrian path and bike path.
- ❖ Staff has replaced the gate at the Lone Sailor located on the Bluff.
- ❖ Staff has installed 4 'Keep Your Dog on a Leash' signs at Will Rogers Mini Park.
- ❖ Staff has installed 'Welcome to the City Long Beach' banner at 2nd Street and Marina Dr.



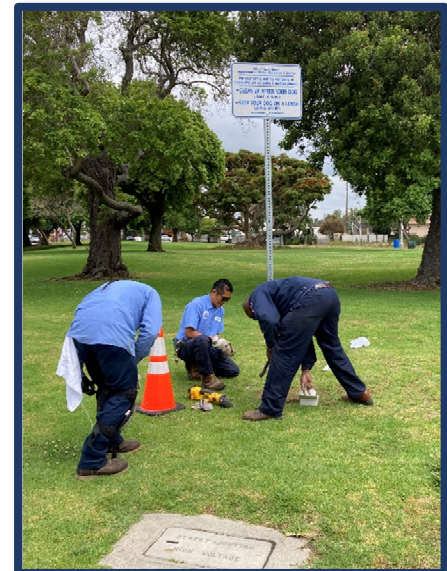
Projects in the Works

- ❖ Staff is in the process of replacing all the damaged and missing signs throughout the Long Beach Shoreline Marina. Staff has already replaced all the "Gangway" and "No Visitor" signs. 90% completed.
- ❖ Staff is in the process of retrofitting the existing twelve (12) booster pumps from a wet system to a dry fire suppression system in the Long Beach Shoreline Marina. 95% completed.
- ❖ Staff is in the process of making improvements to the Alamitos Bay Marina office including painting the interior of the building. 50% completed.
- ❖ Staff is in the process of inspecting and tightening all the loose fingers throughout the Long Beach Shoreline Marina. 40% completed.
- ❖ Staff is in the process of inspecting and replacing all the damaged gangway water supply lines throughout Long Beach Shoreline Marina as needed. 45% completed.
- ❖ Staff is in the process of repairing the restroom plumbing throughout Long Beach Shoreline Marina. 35% completed.



MARINAS AND WATERWAYS

- ❖ Staff is in the process of repairing concrete fingers throughout Long Beach Shoreline Marina. 10% completed.
- ❖ Staff is in the process of replacing exterior doors at the Belmont Pool office. 50% completed.
- ❖ Staff is in the process of painting memorial benches in ABM. 50% completed.
- ❖ Staff is in the process of installing two isolation valves for all 31 Gangway's in Shoreline Marina. 85% completed.
- ❖ Staff is in the process of replacing all electrical components (breakers, receptacles, etc.) inside the pedestals located throughout Shoreline & Rainbow Harbor Marinas. 25% completed.
- ❖ Staff is in the process of installing two isolation valves for all 33 Gangway's in Shoreline Marina. 85% completed.
- ❖ Staff is in the process of retrofitting all pedestals inside of Rainbow Harbor Marina (SHM 1,2,3,4 docks 8 & 9) 35% completed.
- ❖ Staff is in the process of painting curbs and guard post throughout DTM. 85% completed.
- ❖ Staff is in the process of cleaning buoys in ABM and DTM Marina's. 80% completed.



BEACHES AND WATERWAYS

Accomplishments

- ❖ Beach Maintenance staff removed over 929 tons of trash and debris from the beaches and inner bays.
- ❖ Beach Maintenance staff hauled sand to peninsula, rebuilding from high tides and elevated surf.
- ❖ Beach Maintenance staff serviced 220 trash receptacles during the month of May.
- ❖ Beach Maintenance staff swept the bike/pedestrian path.
- ❖ Beach Maintenance staff conducted weekly clean-ups of several homeless encampments throughout the beach areas.
- ❖ Beach Maintenance staff raked and cleaned throughout beach areas.
- ❖ Beach Maintenance staff cleaned the waterline of debris, daily.
- ❖ Beach Maintenance staff completed the Museum Bluff project with new irrigation, jute netting and native plants.
- ❖ Beach Maintenance staff repaired Basin 3 irrigation mainline.
- ❖ Beach Maintenance staff detailed and repaired Queensway Bay areas, post Grand Prix.
- ❖ Beach Maintenance staff added decomposed granite around bases of palm trees in Rainbow Harbor.
- ❖ 50 new trash barrels set out in Tidelands parks.
- ❖ Jetty PEH debris clean-up.
- ❖ Station 34 and Basins detailed.
- ❖ Queensway Bay staff conducted a cleaning of all 60 basket filters in the Rainbow Lagoon, six days per week, twice per day. Staff replaces and cleans all 60 baskets, once a month.
- ❖ Queensway Bay staff conducted daily removal of water borne debris and algae in the Rainbow Lagoon, Rainbow Harbor Marina, and Long Beach Shoreline Marina, using hand nets.
- ❖ Queensway Bay staff removed trash from docks, three times per week.



BEACHES AND WATERWAYS

- ❖ Queensway Bay staff conducted monthly inspections on all docks throughout Rainbow Harbor Marina.
- ❖ Queensway Bay staff serviced all sewage pumps on the commercial docks 1-6, monthly.
- ❖ Queensway Bay staff conducted weekly PEH encampment posting and cleanups.
- ❖ Queensway Bay staff conducted daily graffiti removal of the entire Rainbow Harbor area, including the Queensway bridge bike path and Queen Mary Park.
- ❖ Queensway Bay staff performed routine maintenance on the Wave and Dolphin Fountain twice per week.
- ❖ Queensway Bay staff removed storm debris from Rainbow Harbor and Marinas.
- ❖ Queensway Bay staff removed debris from South Shore Launch Park after vehicle crash.
- ❖ Queensway Bay staff cleaned 4 circulation pits at Rainbow Lagoon.
- ❖ Queensway Bay staff removed 40 in-grade lights and electrical at Pine Ave circle.
- ❖ Queensway Bay staff repaired uneven pavers near DG picnic area Rainbow Esplanade.
- ❖ Queensway Bay staff repaired Green Navigation light at Rainbow Harbor entrance.
- ❖ Queensway Bay staff replaced up-lighting at the Navy Memorial Flagpole.

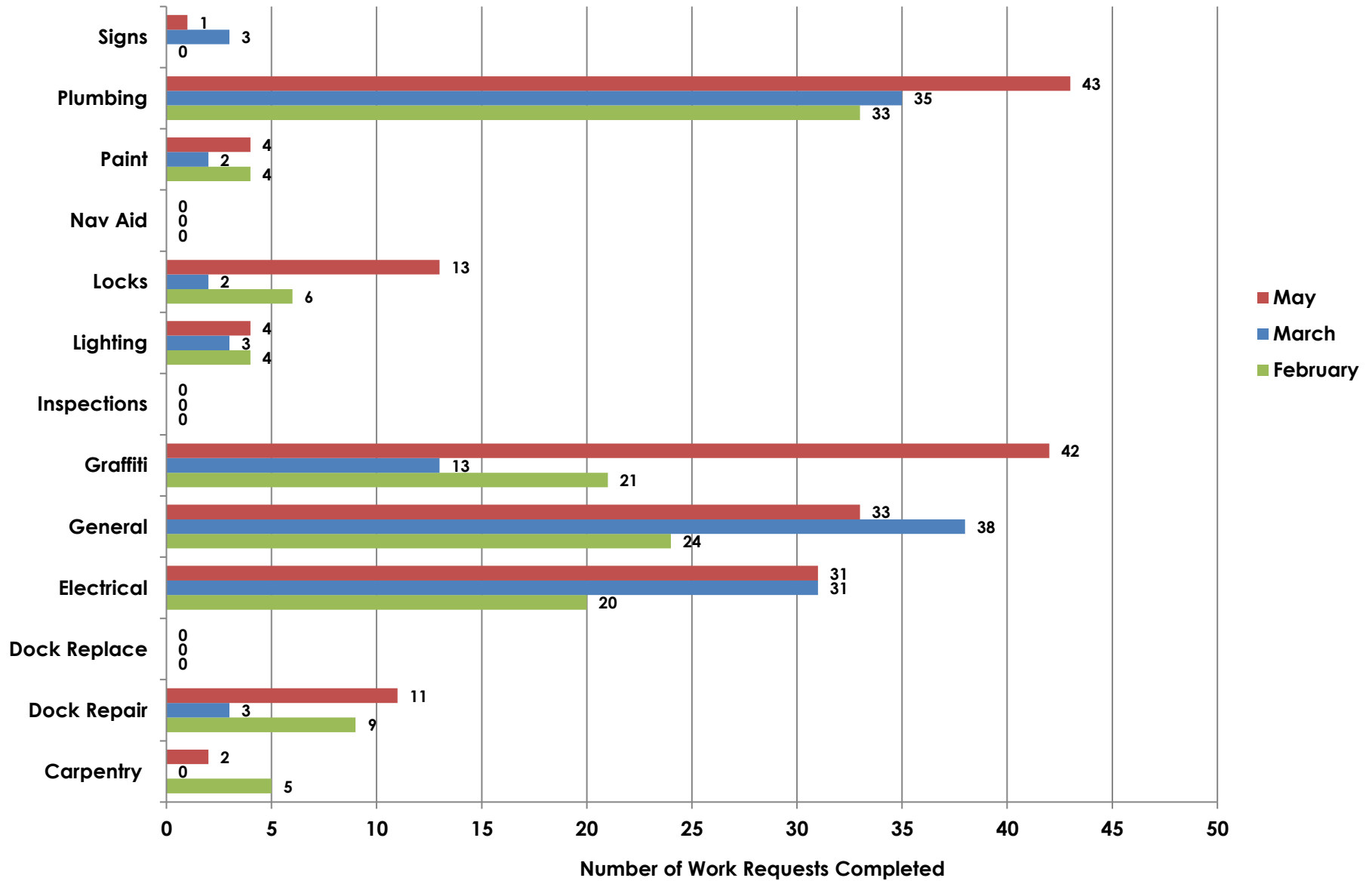


Projects in the Works

- ❖ Beach Maintenance staff is continuing the process of rebuilding sections of the peninsula where erosion occurs.
- ❖ QWB crew in the process of replacing LED color light in Esplanade mast poles.
- ❖ QWB crew in the process of replacing 40 tree lights at Pine Ave circle.

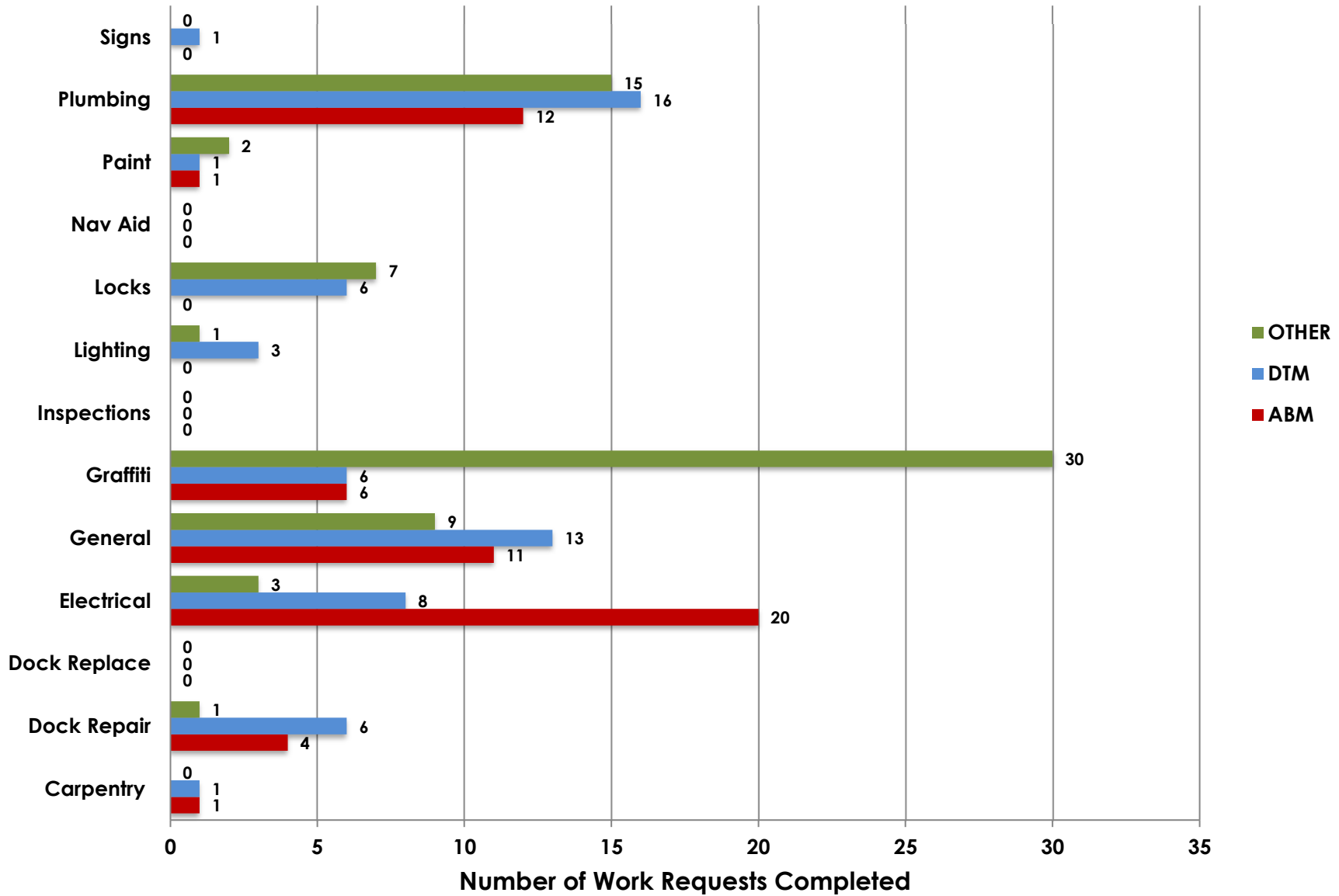
Marine Maintenance

Work Request Completed by Month



Marine Maintenance

Work Requests Completed by Location



PUMPOUT INSPECTION REPORT

Pump Out Locations	Dates			
	05/04/23	05/11/23	05/18/23	04/27/23
Gwy A, A	W	W	W	W
Gwy A, B	W	W	W	W
Parker's Public Dock, A	W	NW	W	W
Parker's Public Dock, B	W	W	W	W
Parker's Public Dock, C	W	W	W	W
Dock 9	W	W	W	W
Basin 6 South	W	W	W	W
Basin 6 North	W	W	W	W
Davie's Launch Ramp, A	W	W	W	W
Station 31, A	W	W	W	W
Station 31, B	W	W	W	W
Station 21	W	W	W	W
Basin 1, Gwy 2	W	W	W	W
Basin 1, Gwy 4	W	W	W	W
Basin 2, Gwy 8	W	W	W	W
Basin 2, Gwy 11	W	W	W	W
Basin 3, Gwy 16	W	W	W	W
Basin 3, Gwy 19	W	W	W	W
Basin 4, Gwy 28	W	W	W	W
Basin 4, Gwy 31	W	W	W	W
Basin 5, Gwy 33	W	W	W	W
Basin 5, Gwy 34	NC	NC	W	W

KEY

W = Working
 NW = Not Working
 N/A = Not Applicable
 NC = No Cart

California, Los Angeles, Long Beach, Inner Harbor

May 2023

N 33° 46.3' / W 118° 12.6'

