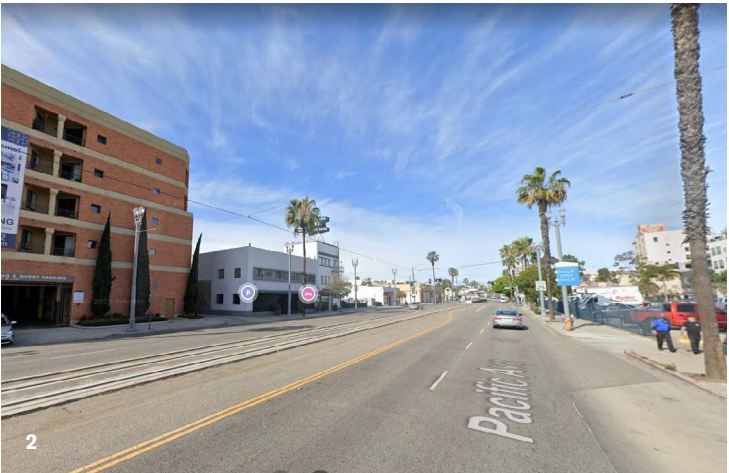


335 Pacific Housing

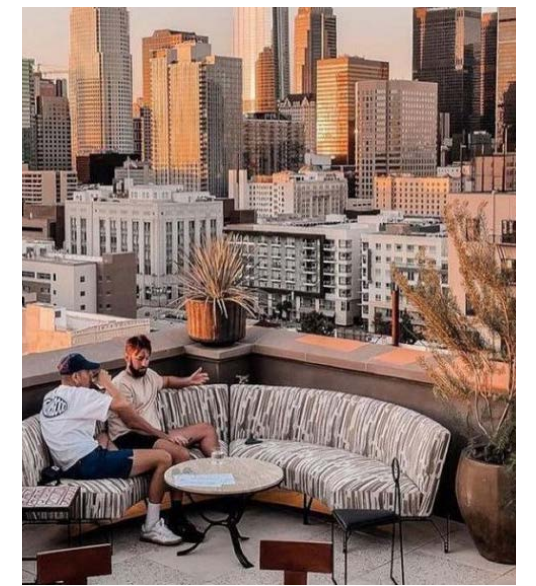
Long Beach, CA

Cultural Heritage Commission

Presentation



Context **Vicinity Map + Street Views**



EQUITABLE

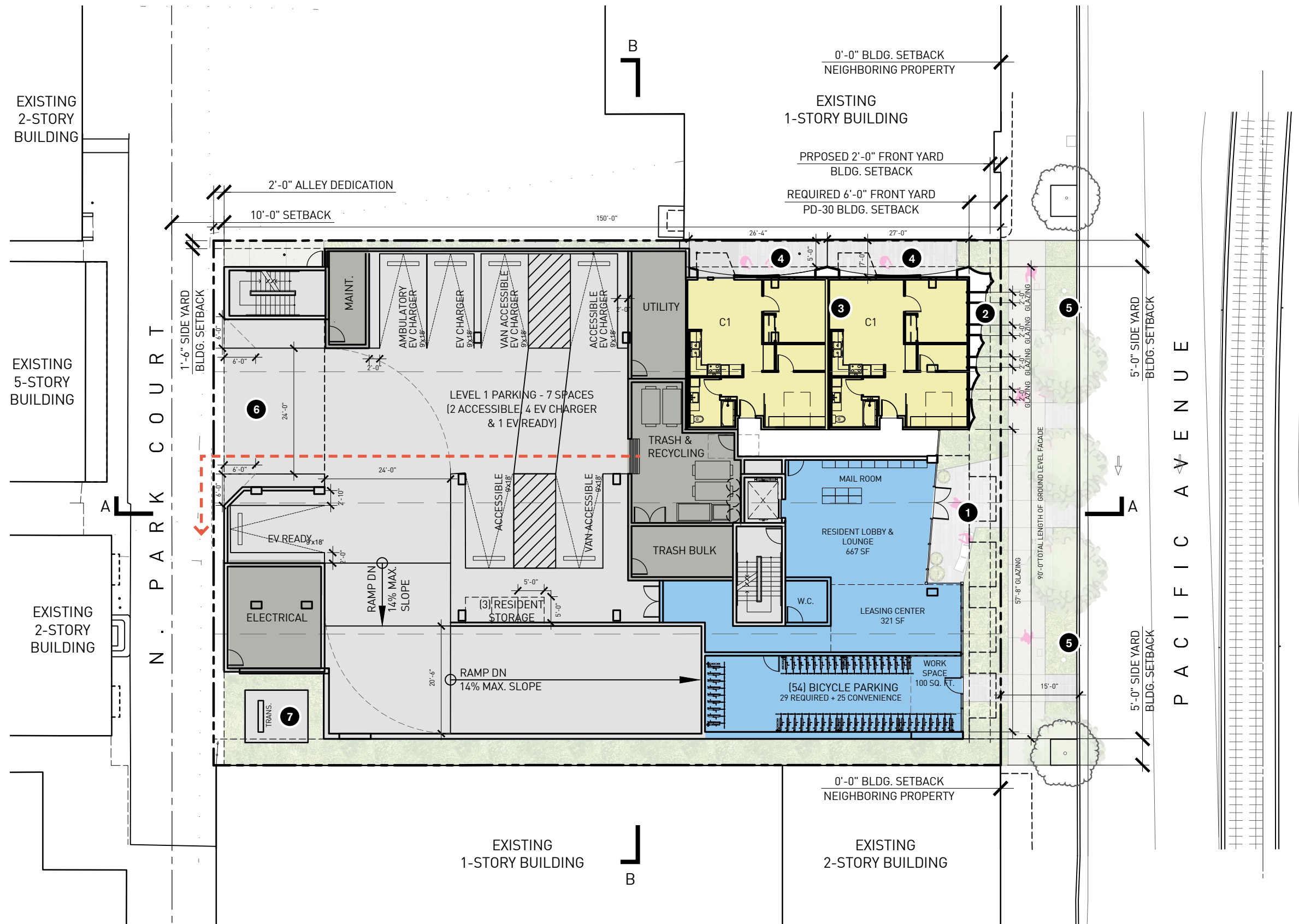
Located within walking distance of [mass transit](#), [jobs](#), [dining](#), [entertainment](#) and the re-imagined [Lincoln Park](#), this project provides a mix of micro-units and compact 1-bedroom plans. Sixteen units will be set aside as low-income [affordable units](#), with the remaining units providing an attainable option for young professionals and others to live in the heart of Downtown. Units are designed with efficient layouts that maximize space, with features that include [full-size bathrooms and kitchens](#), [built-in storage](#), and [large windows](#).

LIVABLE

Ample resident amenity spaces are provided including a [ground floor resident lobby and rideshare waiting lounge](#). Also located on the second floor is a [state-of-the-art fitness center](#) connected to an intimate resident courtyard space. On the eighth floor, a [sky lounge](#) including a kitchen space is connected to an spacious [outdoor deck](#) overlooking downtown skyline.

AUTHENTIC

Facing Pacific Avenue, the building massing steps down to celebrate the relocated [historic Dolly Varden rooftop sign](#). This location honors the history of the site while providing residents a new way to experience the sign up-close. A unique [folded facade design](#) serves as a modern interpretation of Downtown's Art Deco legacy, while a new [multi-story mural](#) adds to the creative environment.



KEYNOTES

1. Ground Floor Pedestrian Entry plaza
2. Architectural Projection
3. Ground Floor Residential Units
4. Private Side Yard
5. Existing Utility Pole to remain
6. Vehicular entry
7. Transformer Enclosure

LEGEND

- Residential Units
- Amenity Space
- Vertical Circulation & Garage
- Utility
- Path to Alley for Trash Collection





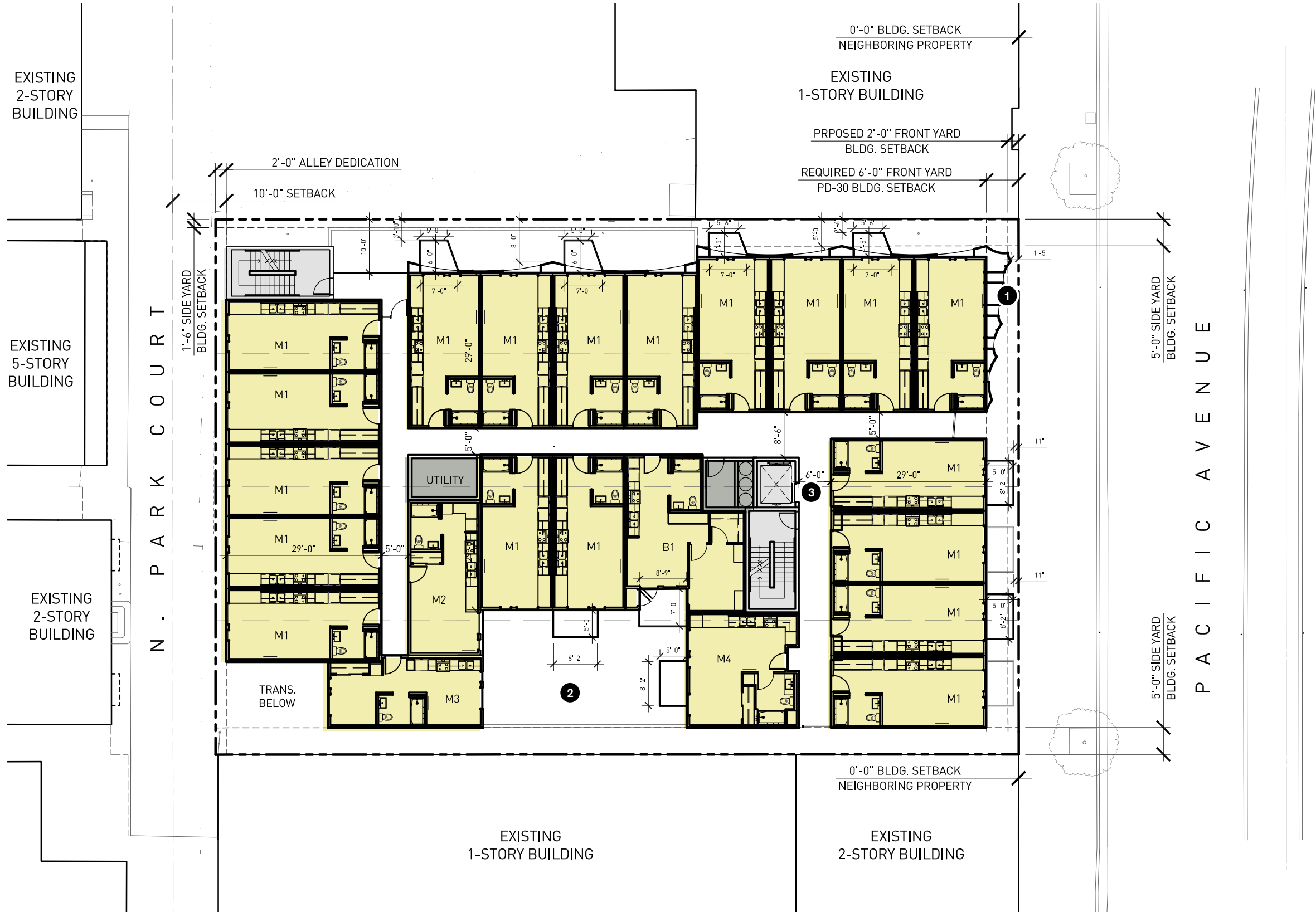
KEYNOTES

- 1. Architectural Projection
- 2. Residential Courtyard Access
- 3. Residential Private Balcony
- 4. Elevator Lobby
- 5. Private Unit Patios

LEGEND

- Residential Units
- Amenity Space
- Vertical Circulation
- Utility





KEYNOTES

1. Architectural Projection
2. Residential Courtyard Below
3. Elevator Lobby

LEGEND

- Residential Units
- Vertical Circulation
- Utility





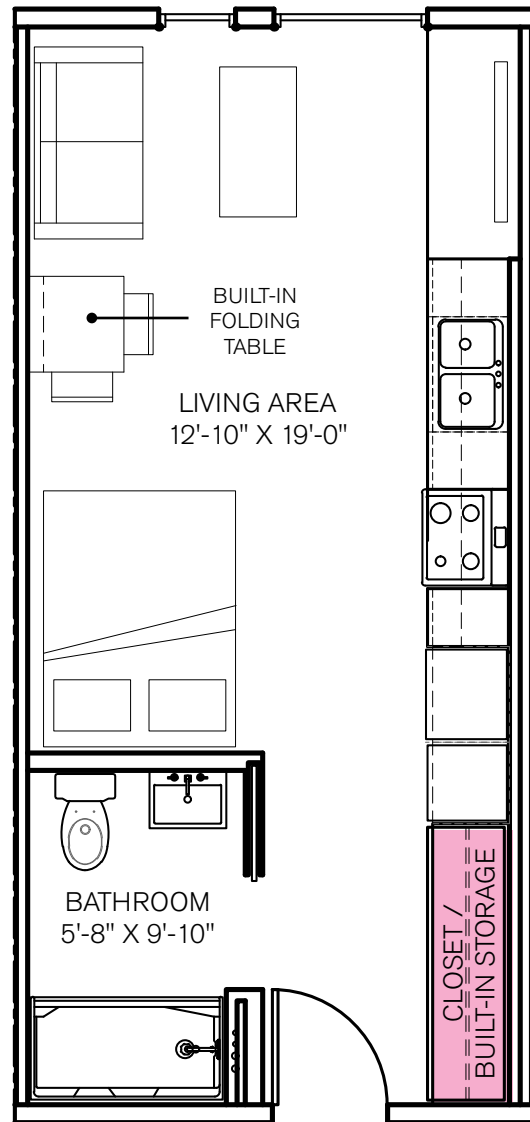
KEYNOTES

1. Architectural Projection
2. Residential Courtyard Below
3. Elevator Access

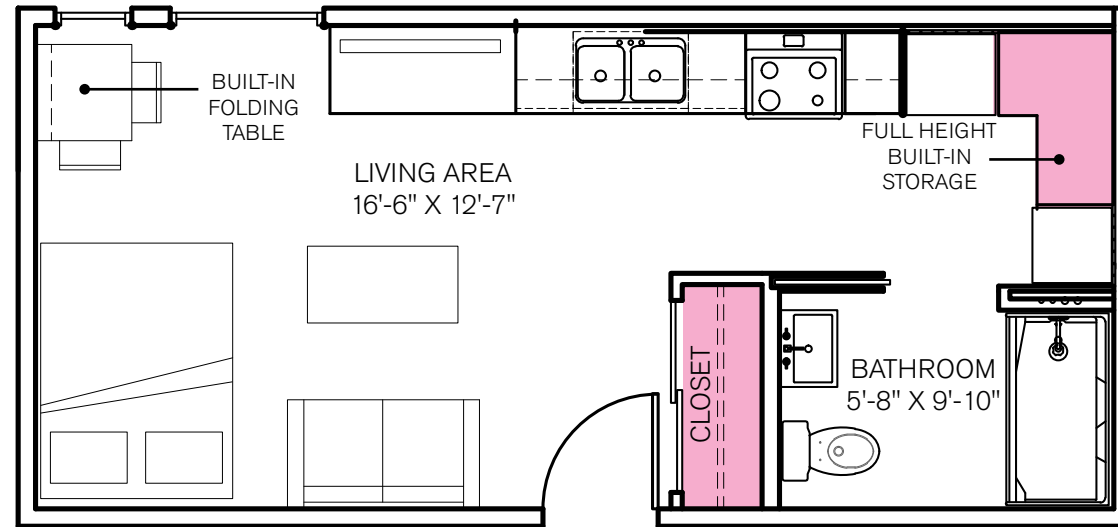
LEGEND

- Residential Units
- Amenity Space
- Vertical Circulation
- Utility

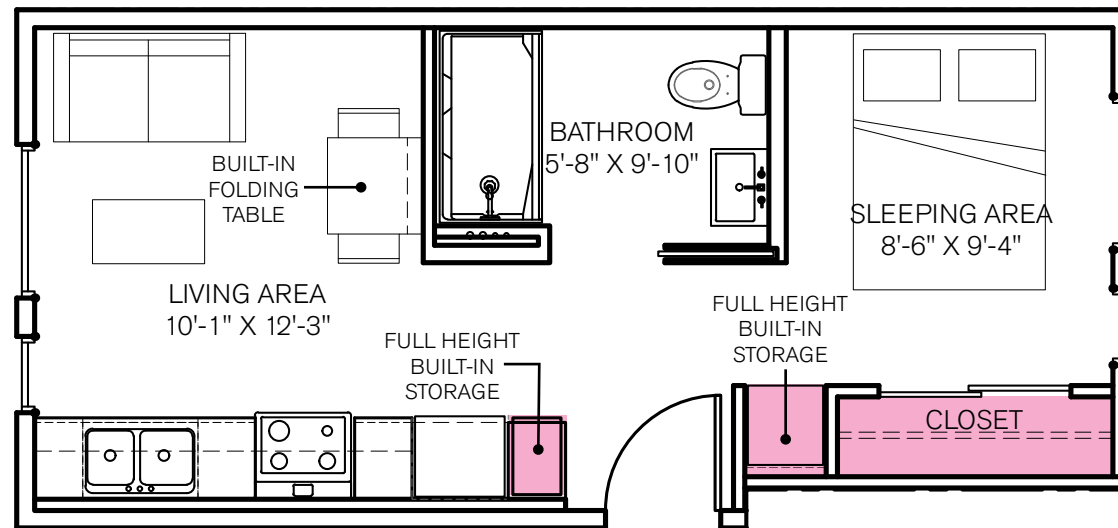




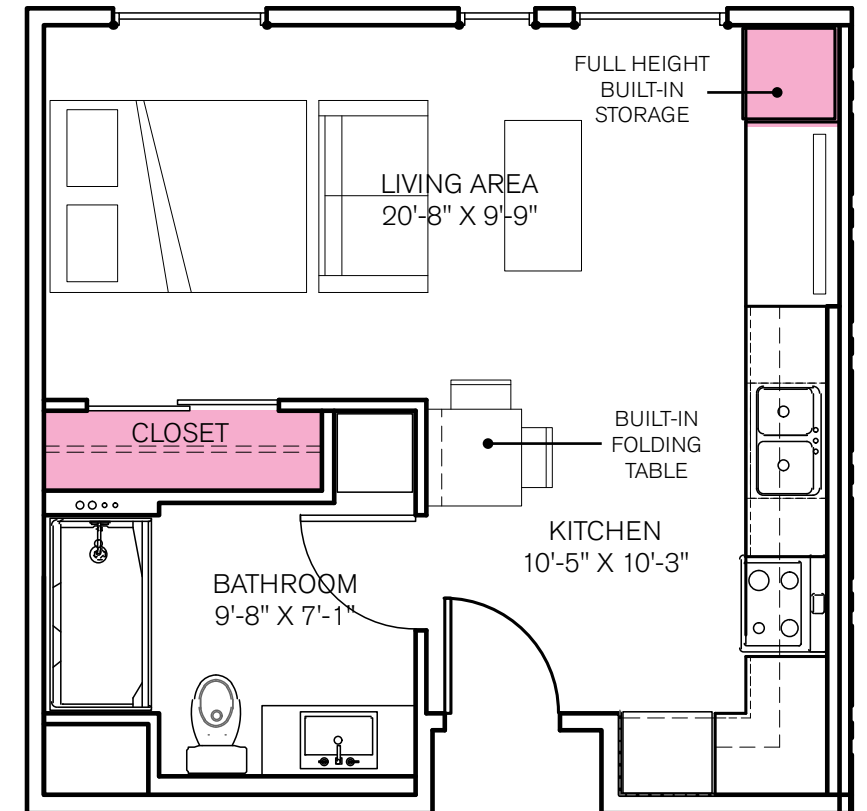
UNIT M1
392 SF



UNIT M2
392 SF



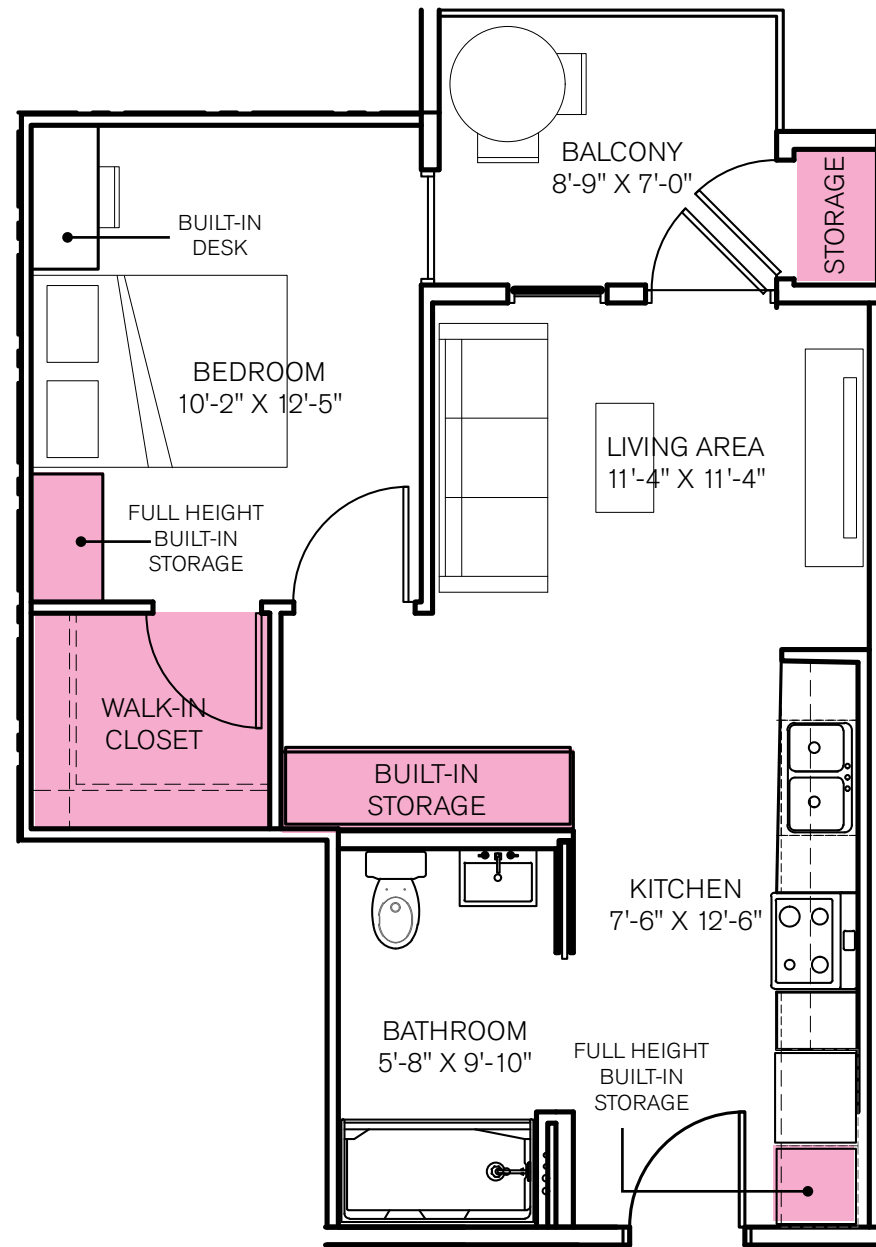
UNIT M3
381 SF



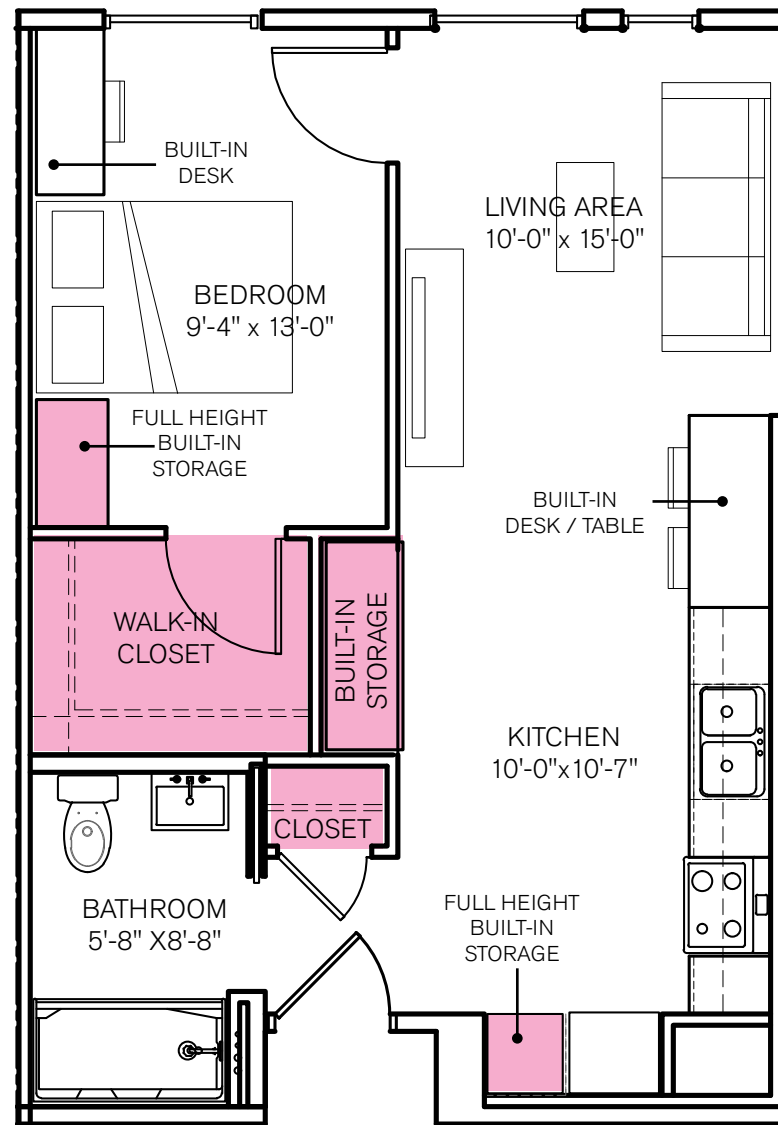
UNIT M4
441 SF

LEGEND

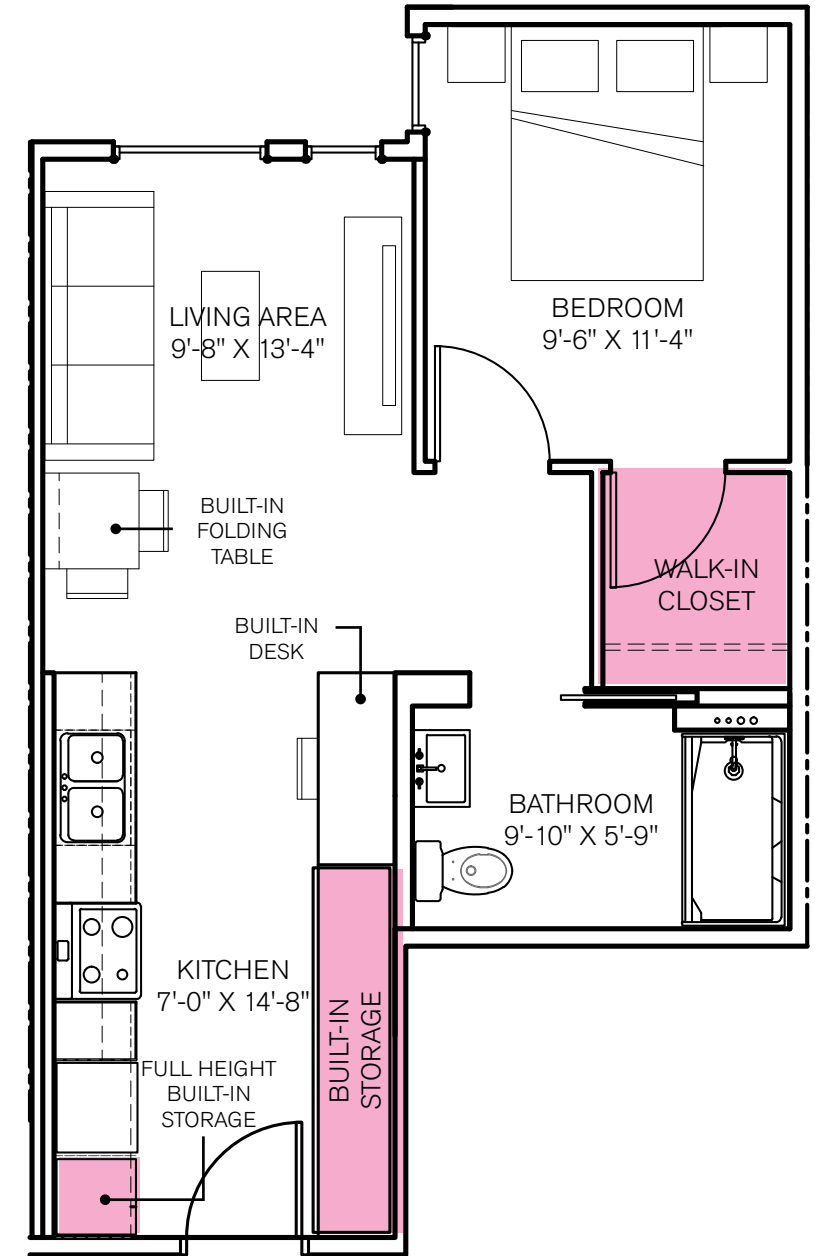
In-Unit Storage



UNIT B1
527 SF



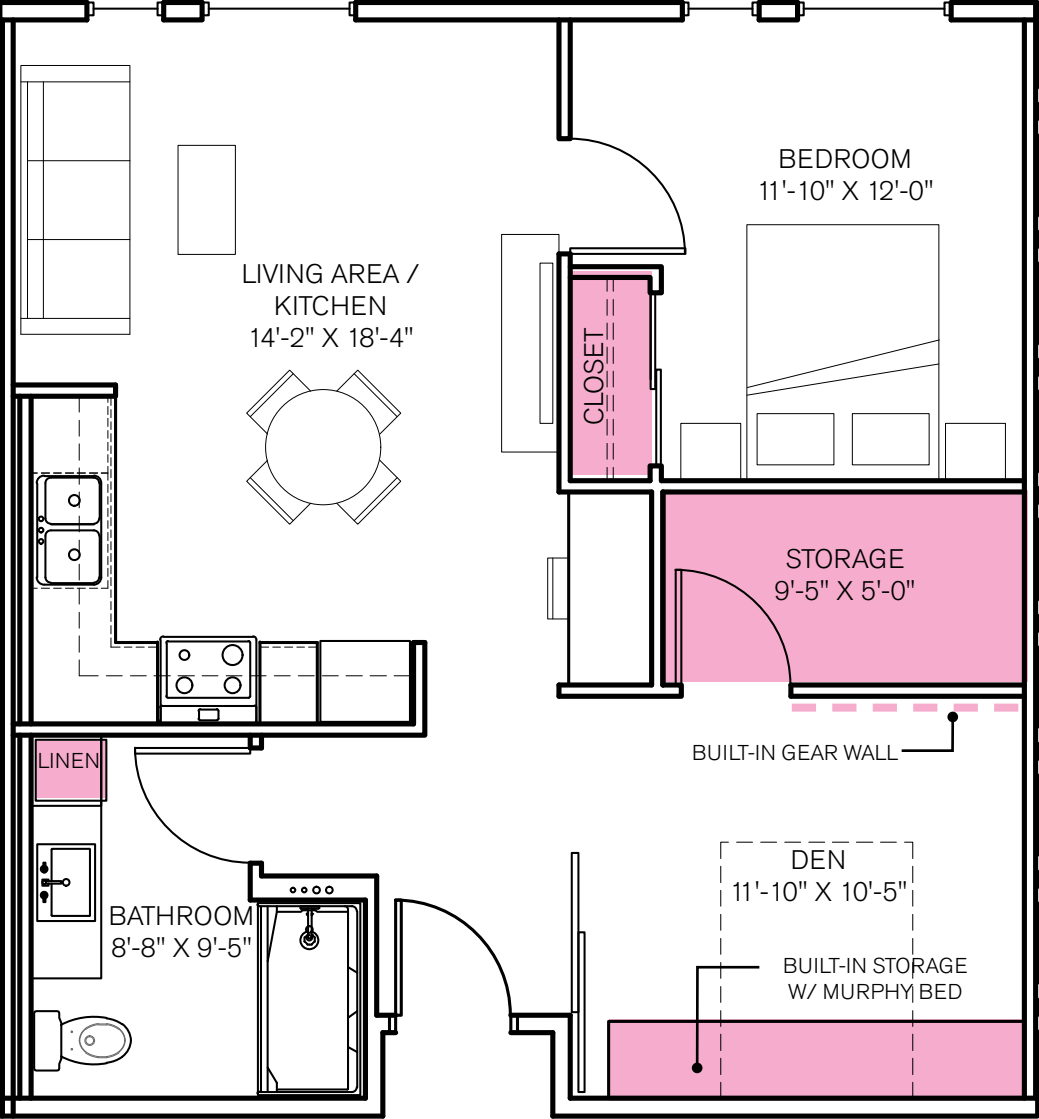
UNIT B2
576 SF



UNIT B3
541 SF

LEGEND

In-Unit Storage



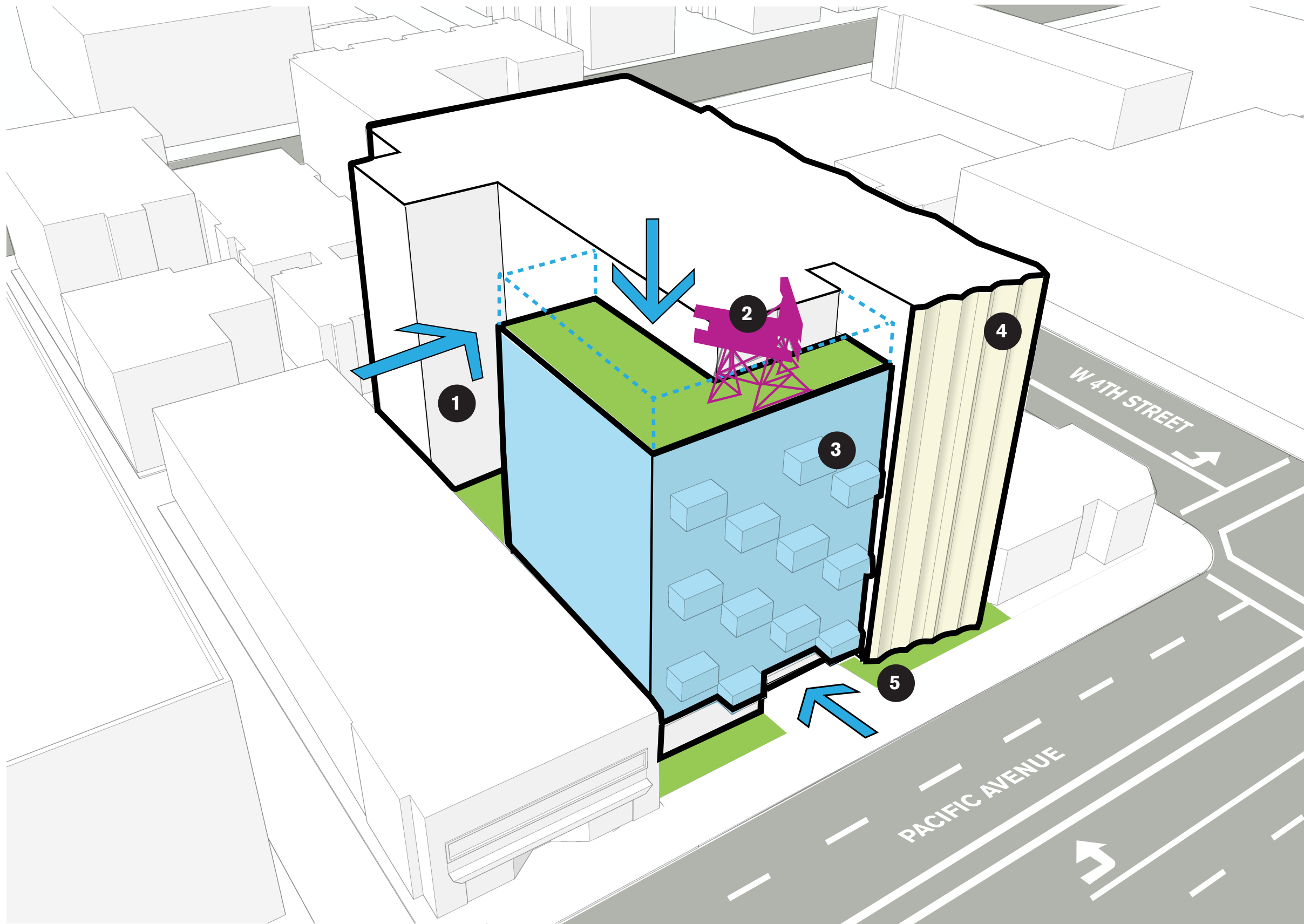
UNIT C1
773 SF

LEGEND

In-Unit Storage



Historic Dolly Varden Rooftop Sign [Enlarged Photographs](#)



- 1 Push back mass to provide south-facing courtyard
- 2 Step down mass to provide a lower scale moment that celebrates the historic Dolly Varden rooftop sign
- 3 Projecting balconies to articulate building form
- 4 Folded facade design to accent verticality and reference history of the site
- 5 Set back the ground floor entry for a pedestrian scaled street connection



Conceptual Massing Looking Southwest



Conceptual Massing Looking Northwest



Conceptual Rendering Facing SW on Pacific Avenue



DESIGN DRIVERS

1. Step down mass to provide a lower scale moment that celebrates the historic Dolly Varden rooftop sign
2. Folded facade design to accent verticality and reference Downtown's Art Deco legacy

KEYNOTES

1. Roof Deck
2. Historic Varden Sign
3. Amenity Lounge & Kitchen

PREVIOUS SIGN LOCATION
 Conceptual Massing **Looking Northwest**



DESIGN DRIVERS

1. Step down mass to provide a lower scale moment that celebrates the historic Dolly Varden rooftop sign
2. Folded facade design to accent verticality and reference Downtown's Art Deco legacy

KEYNOTES

1. Roof Deck
2. Historic Varden Sign
3. Amenity Lounge & Kitchen

PROPOSED SIGN LOCATION
 Conceptual Massing **Looking Northwest**



PREVIOUS SIGN LOCATION
 Conceptual Rendering Facing SW on Pacific Avenue



PROPOSED SIGN LOCATION
 Conceptual Rendering Facing SW on Pacific Avenue



PROPOSED SIGN LOCATION
Conceptual Rendering **Souhbound Traffic on Pacific**



PROPOSED SIGN LOCATION
Conceptual Rendering **Souhbound Traffic on Pacific**



- KEYNOTES**
- 1. Art-Deco inspired Architectural Projection
 - 2. Residential Courtyard Below
 - 3. Historic Varden Sign

- LEGEND**
- Residential Units
 - Amenity Space
 - Vertical Circulation
 - Utility



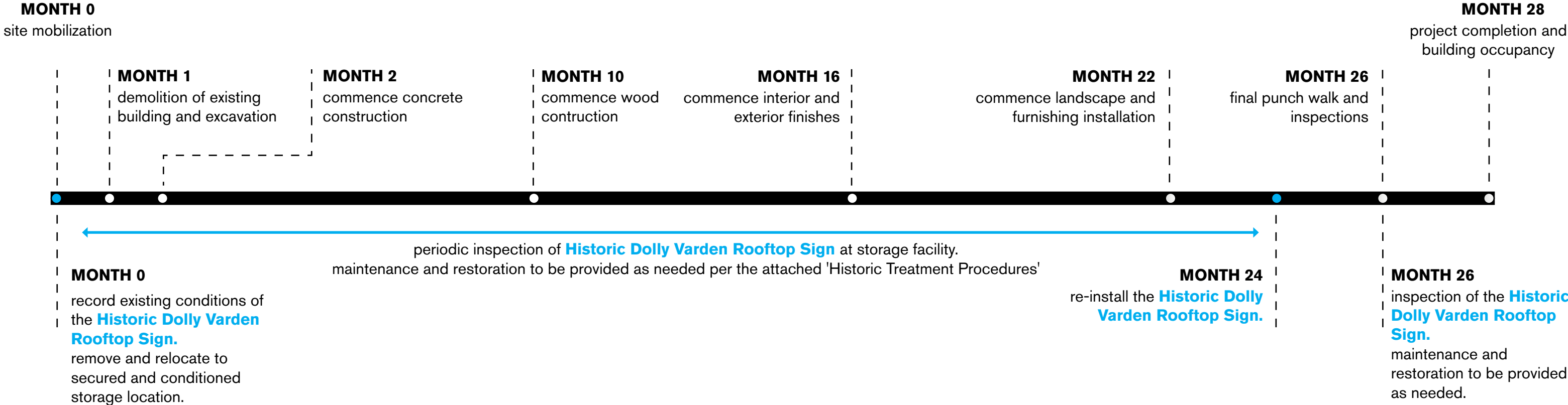


- KEYNOTES**
- 1. Art-Deco inspired Architectural Projection
 - 2. Residential Courtyard Below
 - 3. Historic Varden Sign

- LEGEND**
- Residential Units
 - Amenity Space
 - Vertical Circulation
 - Utility

PROPOSED SIGN LOCATION
Composite Plan Level 8





Thank you!