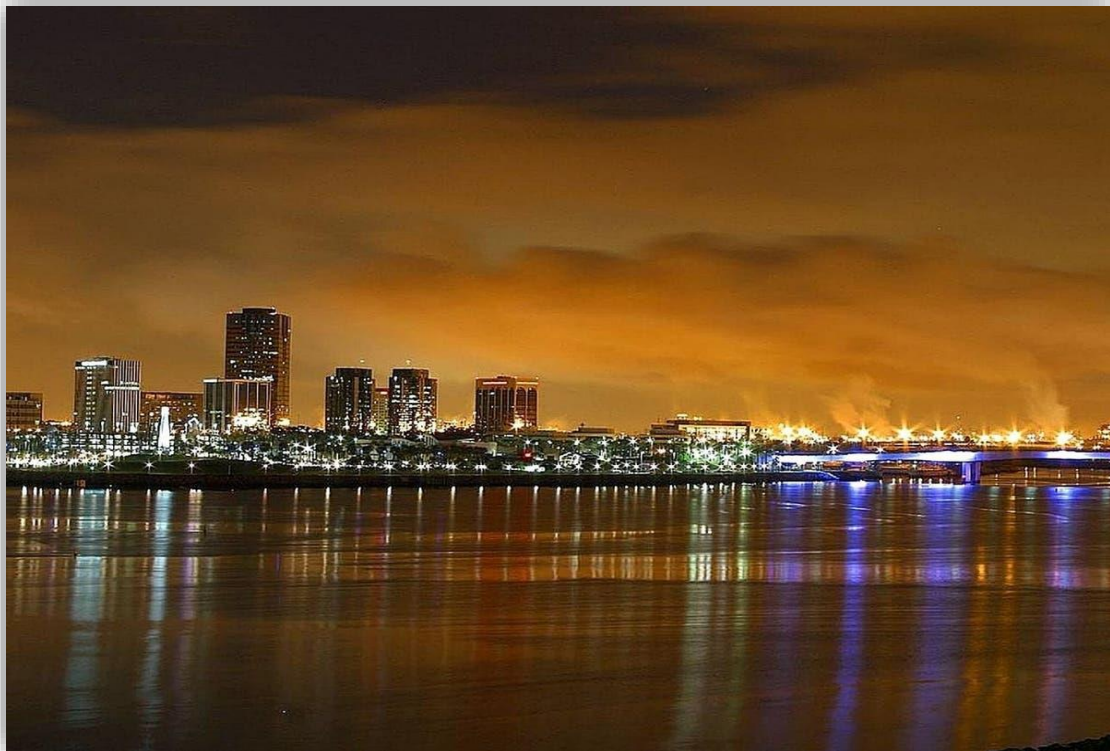


# **MAC Report**

**April 2022**



**SUBMITTED BY THE MARINE BUREAU**



## TABLE OF CONTENTS

1. Marinas and Waterways
2. Beaches and Waterways
3. Marine Maintenance Work Order Graphs
4. Pump Out Inspection Report
5. Tide Table



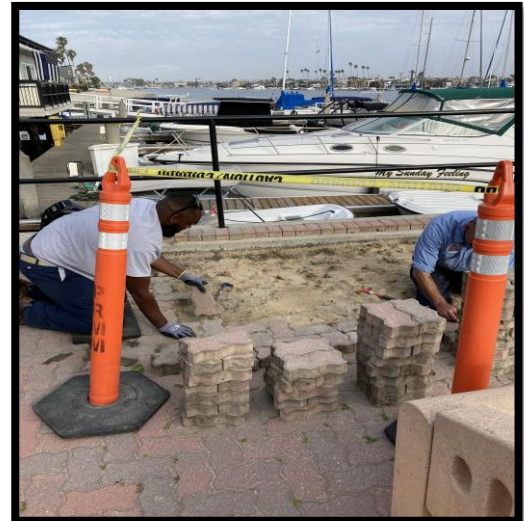
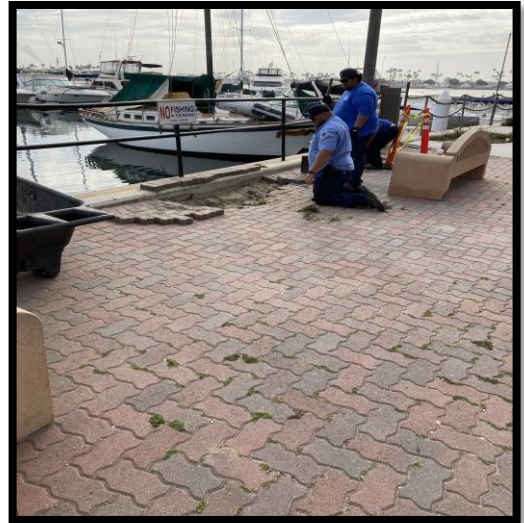
# **MARINAS AND WATERWAYS**

## **Accomplishments**

- ❖ Staff leveled out sunken pavers on 62<sup>nd</sup> Street Landing.
- ❖ Staff has rebuilt pump out for Davies Launch Ramp.
- ❖ Staff has upgraded to MUL-T-LOCK key system in DTM boat owner's restrooms.

## **Projects in the works**

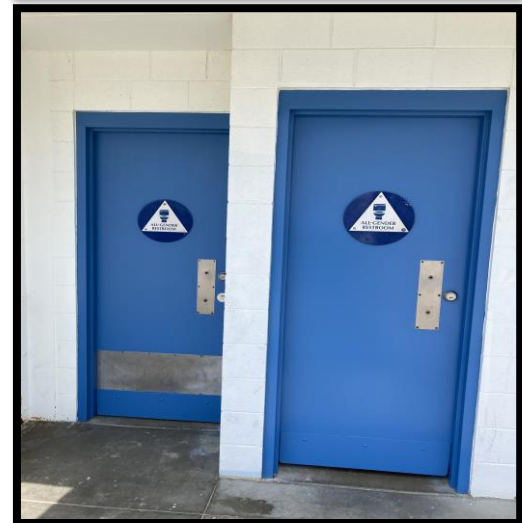
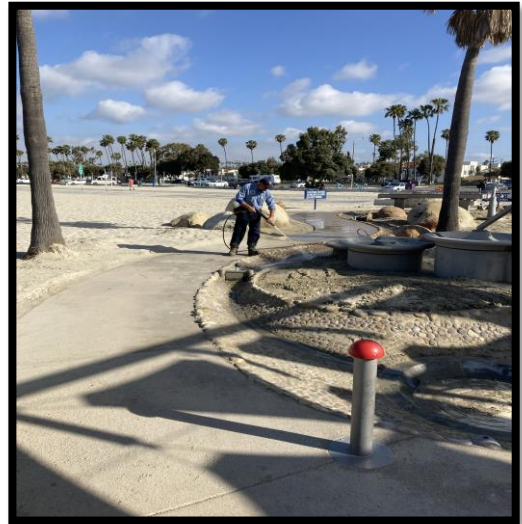
- ❖ Staff is in the process of replacing all the damaged and missing signs throughout the Long Beach Shoreline Marina. Staff has already replaced all the "Gangway" and "No Visitor" signs. 90% completed
- ❖ Staff is in the process of retrofitting the existing twelve (12) booster pumps from a wet system to a dry fire suppression system in the Long Beach Shoreline Marina. 80% completed
- ❖ Staff is in the process of making improvements to the Alamitos Bay Marina office including painting the interior of the building. 50% completed
- ❖ Staff is in the process of inspecting and tightening all the loose fingers throughout the Long Beach Shoreline Marina. 40% completed
- ❖ Staff is in the process of inspecting and replacing all the damaged gangway water supply lines throughout Long Beach Shoreline Marina, as needed. 45% completed
- ❖ Staff is in the process of repairing the restroom plumbing throughout Long Beach Shoreline Marina. 35% completed
- ❖ Staff is in the process of repairing concrete fingers throughout Long Beach Shoreline Marina. 10% completed
- ❖ Staff is in the process of replacing exterior doors at the Belmont Pool office. 50% completed
- ❖ Staff is in the process of replacing all electrical components (breakers, receptacles, etc.) inside the pedestals located throughout Shoreline & Rainbow Harbor Marina's. 25% completed





## MARINAS AND WATERWAYS

- ❖ Staff is in the process of painting memorial benches in ABM. 50% completed
- ❖ Staff is in the process of installing two isolation valves for all 31 Gangway's in Shoreline Marina. 5% completed
- ❖ Staff is in the process of installing two isolation valves for all 33 Gangway's in Shoreline Marina. 85% completed
- ❖ Staff is in the process of repairing seawall on Bayshore. 85% complete
- ❖ Staff is in the process of retrofitting all pedestals inside of Rainbow Harbor Marina (SHM 1,2,3,4 docks 8 & 9) 35% completed
- ❖ Staff is in the process of painting curbs and guard post throughout DTM. 85% completed
- ❖ Staff is in the process of cleaning buoy's in ABM and DTM Marina's. 50% completed
- ❖ Staff is in the process of remodeling the women's restrooms at Harbor Master Office. 5% complete
- ❖ Staff is in the process of painting interior of beach restrooms B-7 thru B-2. 35% complete



## **BEACHES AND WATERWAYS**

### **Accomplishments**

- ❖ Beach Maintenance staff removed over 94 tons of trash and debris from the beaches and inner bays.
- ❖ Beach Maintenance staff removed trash and debris from the beach waterline.
- ❖ Beach Maintenance staff serviced 300 trash receptacles during the month of April.
- ❖ Beach Maintenance staff built up and maintained the berm on the East Peninsula beach between 62<sup>nd</sup> – 72<sup>nd</sup> place.
- ❖ Beach Maintenance staff swept the bike/pedestrian path.
- ❖ Beach Maintenance staff conducted weekly cleanups of several homeless encampments throughout the beach areas.
- ❖ Beach Maintenance staff conducted weed abatement around the public showers and walkways throughout the beach areas.
- ❖ Beach Maintenance staff swept and maintained parking lot areas.
- ❖ Beach Maintenance staff planted flowers and shut down irrigation in preparation for 2022 Acura Grand Prix of Long Beach.
- ❖ Beach Maintenance staff repaired broken main at Bixby monument.
- ❖ Queensway Bay staff conducted a cleaning of all 60 basket filters in the Rainbow Lagoon; six days per week, twice per day. Staff replaces and cleans all 60 baskets once a month.
- ❖ Queensway Bay staff conducted daily removal of water borne debris and algae in the Rainbow Lagoon, Rainbow Harbor Marina and Long Beach Shoreline Marina using hand nets.
- ❖ Queensway Bay staff removed trash from docks, three times per week.
- ❖ Queensway Bay staff conducted daily cleaning and maintenance of all trash skimmers on the docks, six days per week.
- ❖ Queensway Bay staff conducted monthly inspections on all docks throughout Rainbow Harbor Marina.





## **BEACHES AND WATERWAYS**

- ❖ Queensway Bay crew repaired two fountains at Rainbow Lagoon.
- ❖ Queensway Bay crew removed damaged submersible fill pump for Rainbow Lagoon and installed back up pump.
- ❖ Queensway Bay crew installed Fired Department key box for Birdcage elevator room.
- ❖ Queensway Bay crew repaired 3" dock main water hose on dock 3
- ❖ Queensway Bay crew repaired 3 aerator lines at Rainbow Lagoon Park.
- ❖ Queensway Bay staff serviced all sewage pumps on the commercial docks 1-6.
- ❖ Queensway Bay staff conducted weekly encampment posting and cleanups.
- ❖ Queensway Bay repaired broken window at lighthouse.
- ❖ Queensway Bay staff completed 36 work orders and 14 Go Long Beach request for the month of April.
- ❖ Queensway Bay staff conducted daily graffiti removal of the Rainbow Harbor area, including the Queensway bridge bike path and Queen Mary Park.
- ❖ Queensway Bay staff performed routine maintenance on the Wave and Dolphin Fountain.
- ❖ Queensway Bay staff power washed the exterior of the Wave Fountain bi-weekly.
- ❖ Queensway Bay crew assisted in removing and transporting 12 dinghies from Shoreline Marina.

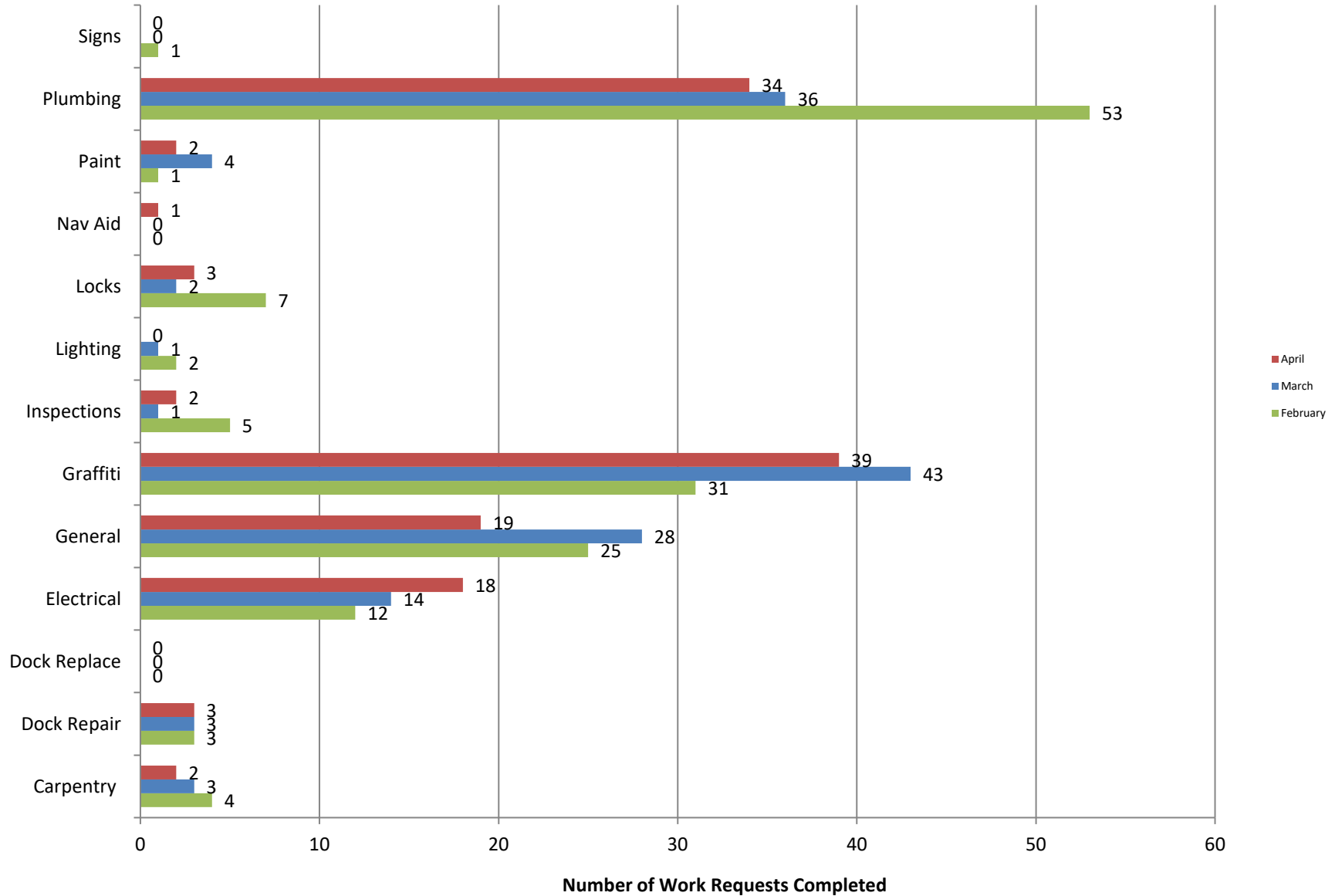


### **Projects in the works**

- ❖ Beach Maintenance staff is continuing the process of rebuilding sections of the peninsula where erosion occurs.
- ❖ Queensway Bay crew working to install security guards at Horn Blower building.
- ❖ Queensway Bay crew working to replace 50 electric water valves for Wave fountain jets.

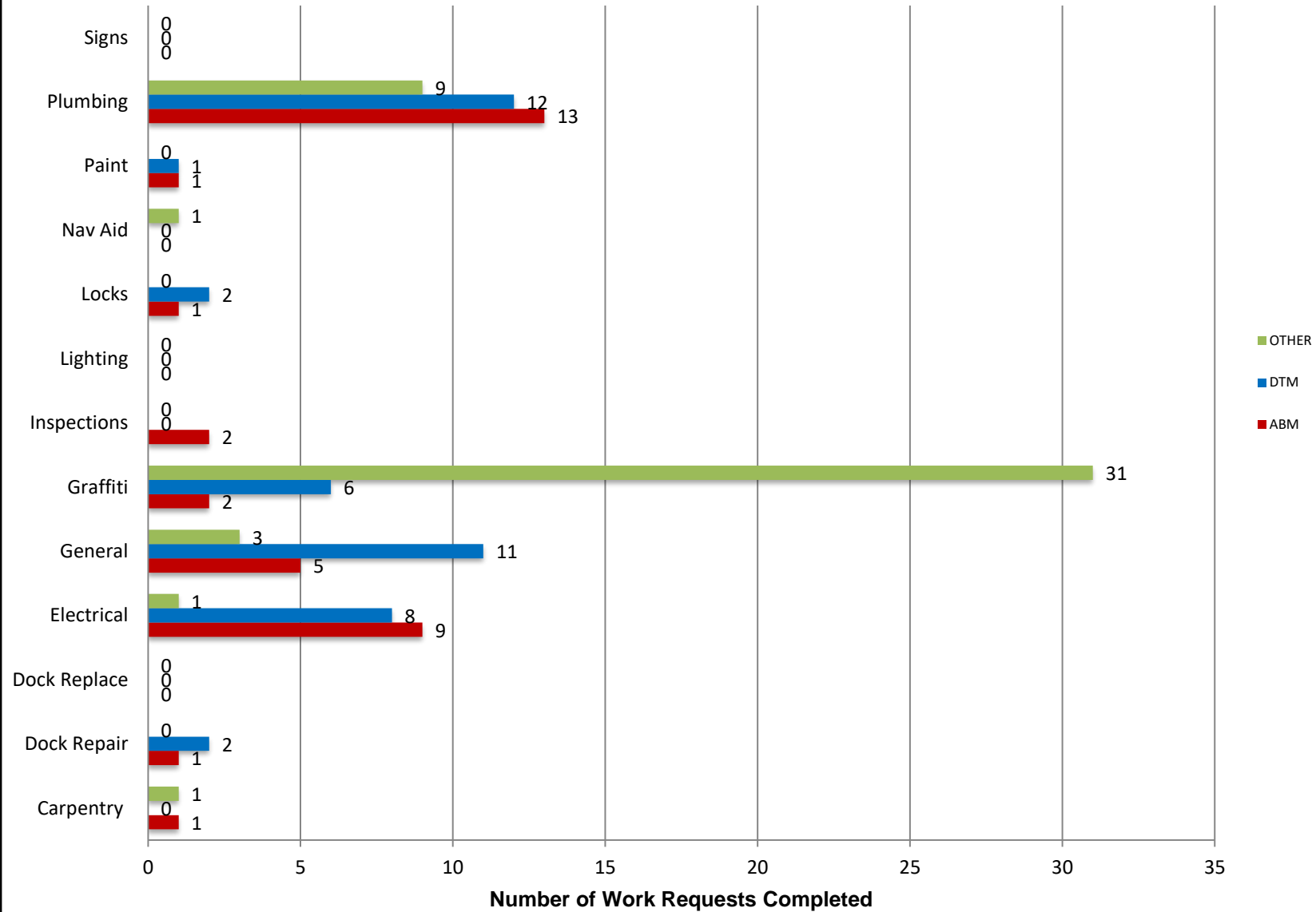
# Marine Maintenance

## Work Request Completed by Month



# Marine Maintenance

## Work Requests Completed by Location





## PUMPOUT INSPECTION REPORT

| Pump Out Location       | Inspection Date |          |          |          |
|-------------------------|-----------------|----------|----------|----------|
|                         | 04/07/22        | 04/14/22 | 04/21/22 | 04/28/22 |
| Gwy A, A                | W               | W        | W        | W        |
| Gwy A, B                | W               | W        | NW       | W        |
| Parker's Public Dock, A | W               | W        | NW       | NW       |
| Parker's Public Dock, B | NW              | NW       | NW       | NW       |
| Parker's Public Dock, C | W               | W        | W        | NW       |
| Dock 9                  | NW              | NW       | NW       | NW       |
| Basin 6 South           | W               | W        | W        | W        |
| Davie's Launch Ramp, A  | W               | W        | NW       | NW       |
| Station 31, A           | W               | W        | W        | W        |
| Station 31, B           | W               | W        | W        | W        |
| Station 21              | W               | W        | W        | W        |
| Basin 1, Gwy 2          | W               | W        | W        | W        |
| Basin 1, Gwy 4          | W               | W        | W        | W        |
| Basin 2, Gwy 8          | W               | W        | W        | W        |
| Basin 2, Gwy 11         | W               | W        | W        | W        |
| Basin 3, Gwy 16         | W               | W        | W        | W        |
| Basin 3, Gwy 19         | W               | W        | W        | W        |
| Basin 4, Gwy 28         | W               | W        | W        | W        |
| Basin 4, Gwy 31         | W               | W        | W        | W        |
| Basin 5, Gwy 33         | W               | W        | W        | W        |
| Basin 5, Gwy 34         | W               | W        | W        | W        |

| KEY                  |
|----------------------|
| W = Working          |
| NW = Not Working     |
| N/A = Not Applicable |

# California, Los Angeles, Long Beach, Inner Harbor

May 2022

N 33° 46.3' / W 118° 12.6'

