

## Alternative 1



## Alternative 1



**New Underground Culvert**

**Existing Culvert - left in place for use**

## Alternative 2



## Alternative 2

Narrower Channel Sections  
Under Bridges  
(~60 ft wide, steeper slopes)

Bridge  
and Re-aligned Colorado Street

Existing Culvert –  
majority of culvert left in place for use (shown in blue);  
Marine Stadium end demolished (shown in orange)

~100 feet wide  
Open Channel

Headwall – connect existing  
culvert with open channel

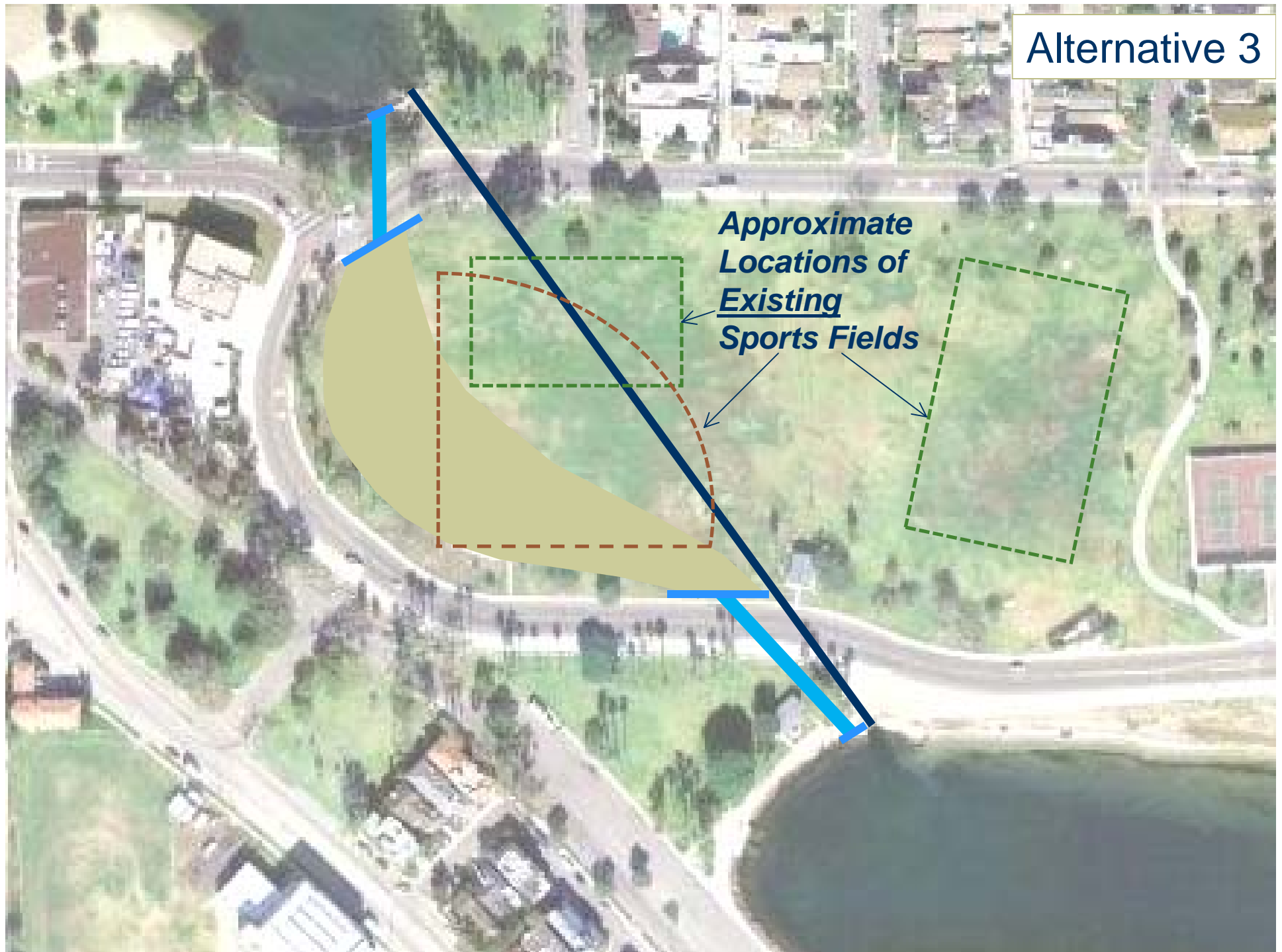
Relocate restroom

Bridge

X



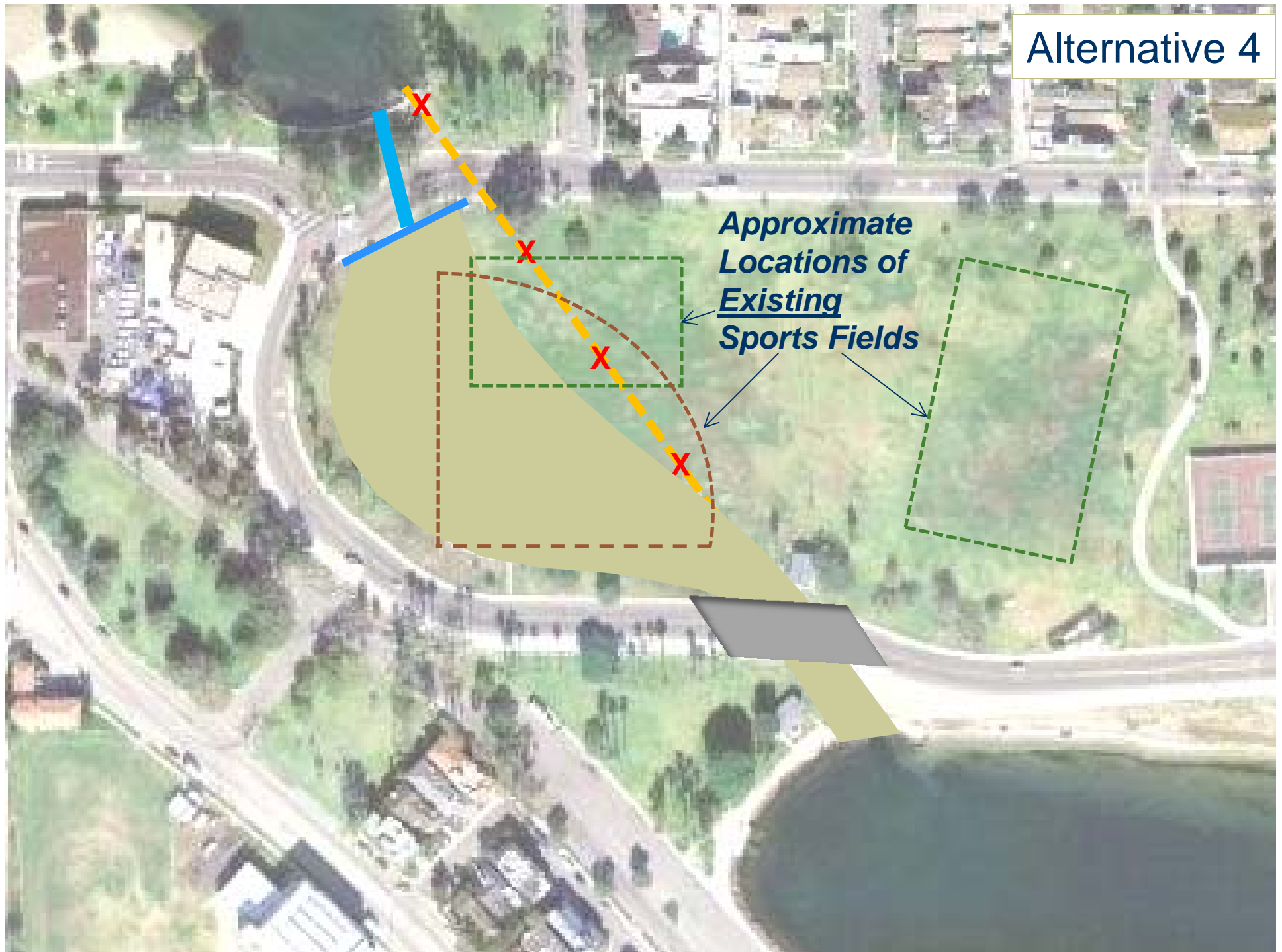
## Alternative 3



## Alternative 3



## Alternative 4





## Alternative 4





## Alternative 4a



## Alternative 4a

Narrower Channel Sections  
Under Bridges  
(~60 ft wide, steeper slopes)

Bridge  
and Re-aligned Colorado Street

Open Channel  
(~100 to 220 ft wide)

Existing Culvert - demolished

Relocate restroom

Bridge

