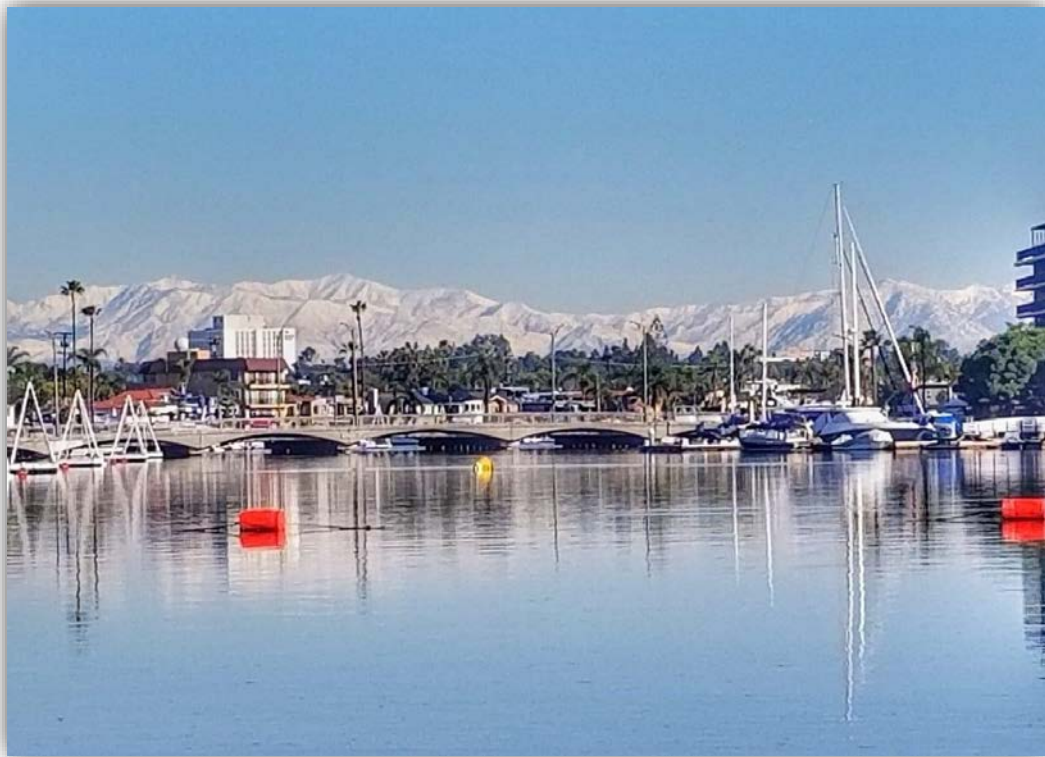


MAC Report

December 2021



SUBMITTED BY THE MARINE BUREAU



TABLE OF CONTENTS

1. Marinas and Waterways
2. Beaches and Waterways
3. Marine Maintenance Work Order Graphs
4. Pump Out Inspection Report
5. Tide Table



MARINAS AND WATERWAYS

Projects in the work

- ❖ Staff is in the process of replacing all the damaged and missing signs throughout the Long Beach Shoreline Marina. Staff has already replaced all the “Gangway” and “No Visitor” signs. 90% completed
- ❖ Staff is in the process of retrofitting the existing twelve (12) booster pumps from a wet system to a dry fire suppression system in the Long Beach Shoreline Marina. 80% completed
- ❖ Staff is in the process of making improvements to the Alamitos Bay Marina office including painting the interior of the building. 50% completed
- ❖ Staff is in the process of inspecting and tightening all the loose fingers throughout the Long Beach Shoreline Marina. 40% completed
- ❖ Staff is in the process of inspecting and replacing all the damaged gangway water supply lines throughout Long Beach Shoreline Marina, as needed. 45% completed
- ❖ Staff is in the process of repairing the restroom plumbing throughout Long Beach Shoreline Marina. 35% completed
- ❖ Staff is in the process of repairing concrete fingers throughout Long Beach Shoreline Marina. 10% completed
- ❖ Staff is in the process of replacing exterior doors at the Belmont Pool office. 50% completed
- ❖ Staff is in the process of replacing all electrical components (breakers, receptacles, etc.) inside the pedestals located throughout Shoreline & Rainbow Harbor Marina's. 25% completed
- ❖ Staff is in the process of installing two (2) new power pedestals on long dock North. 50% completed
- ❖ Staff is in the process of painting memorial benches in ABM. 50% completed
- ❖ Staff is in the process of installing two isolation valves for all 31 Gangway's in Shoreline Marina. 5% completed
- ❖ Staff is in the process of installing pony gates throughout Basin 3. 20% completed
- ❖ Staff is in the process of installing two isolation valves for all 33 Gangway's in Shoreline Marina. 85% completed
- ❖ Staff is in the process of preparing and painting all trash enclosure doors on Mole road lot. 80% completed
- ❖ Staff is in the process of repairing seawall on Bayshore. 85% complete
- ❖ Staff is in the process of retrofitting all pedestals inside of Rainbow Harbor Marina (SHM 1,2,3,4 docks 8 & 9) 35% completed
- ❖ Staff is in the process of painting curbs and guard post throughout DTM. 85% completed

BEACHES AND WATERWAYS

Accomplishments

- ❖ Beach Maintenance staff removed trash and debris from the beaches, inner bays, and beach waterline.
- ❖ Beach Maintenance staff serviced 300 trash receptacles during the month of December.
- ❖ Beach Maintenance staff built up and maintained the berm on the East Peninsula beach between 62nd – 72nd place.
- ❖ Beach Maintenance staff swept the bike/pedestrian path.
- ❖ Beach Maintenance staff conducted weekly cleanups of several homeless encampments throughout the beach areas.
- ❖ Beach Maintenance staff raked and cleaned throughout beach areas.
- ❖ Beach Maintenance staff coordinated annual tree trimming throughout the Marina's, Tidelands, and Queensway Bay area.
- ❖ Beach Maintenance staff cleaned the Boat Impound yard.
- ❖ Queensway Bay staff conducted a cleaning of all 60 basket filters in the Rainbow Lagoon; six days per week, twice per day. Staff replaces and cleans all 60 baskets once a month.
- ❖ Queensway Bay staff conducted daily removal of water borne debris and algae in the Rainbow Lagoon, Rainbow Harbor Marina and Long Beach Shoreline Marina using hand nets.
- ❖ Queensway Bay staff removed trash from docks, three times per week.
- ❖ Queensway Bay staff conducted daily cleaning and maintenance of all trash skimmers on the docks, six days per week.



BEACHES AND WATERWAYS

- ❖ Queensway Bay staff conducted monthly inspections on all docks throughout Rainbow Harbor Marina.
- ❖ Queensway Bay staff serviced all sewage pumps on the commercial docks 1-6.
- ❖ Queensway Bay staff conducted weekly encampment posting and cleanups.
- ❖ Queensway Bay staff conducted daily graffiti removal of the entire Rainbow Harbor area, including the Queensway bridge bike path and the Pier Point parking lot.
- ❖ Queensway Bay staff performed routine maintenance on the Wave and Dolphin Fountain.
- ❖ Queensway Bay staff power washed the exterior of the Wave Fountain bi-weekly.

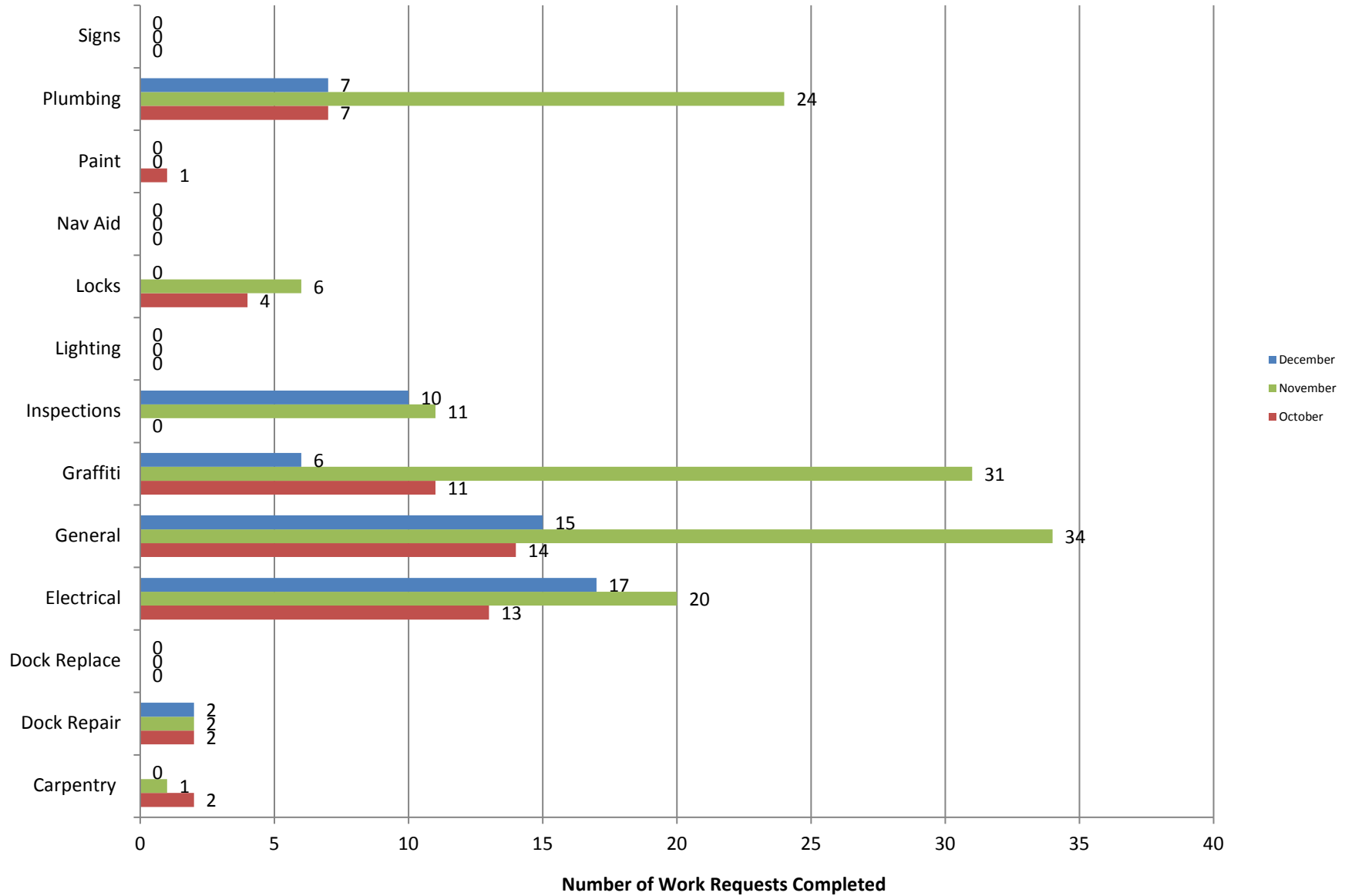


Projects in the works

- ❖ Beach Maintenance staff is continuing the process of rebuilding sections of the peninsula where erosion occurs.
- ❖ QWB crew scheduled to replace two public drinking fountains

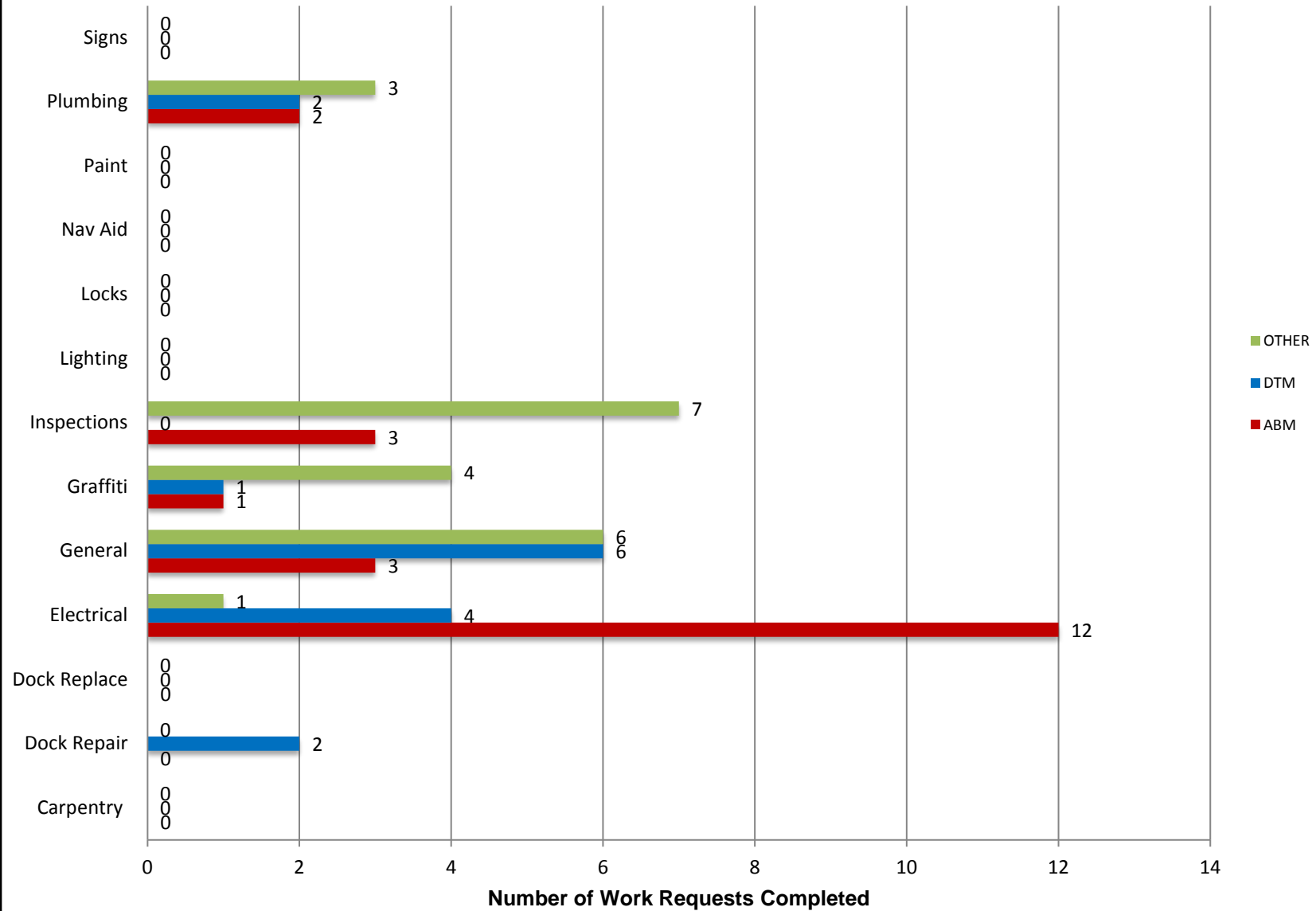
Marine Maintenance

Work Request Completed by Month



Marine Maintenance

Work Requests Completed by Location



PUMPOUT INSPECTION REPORT

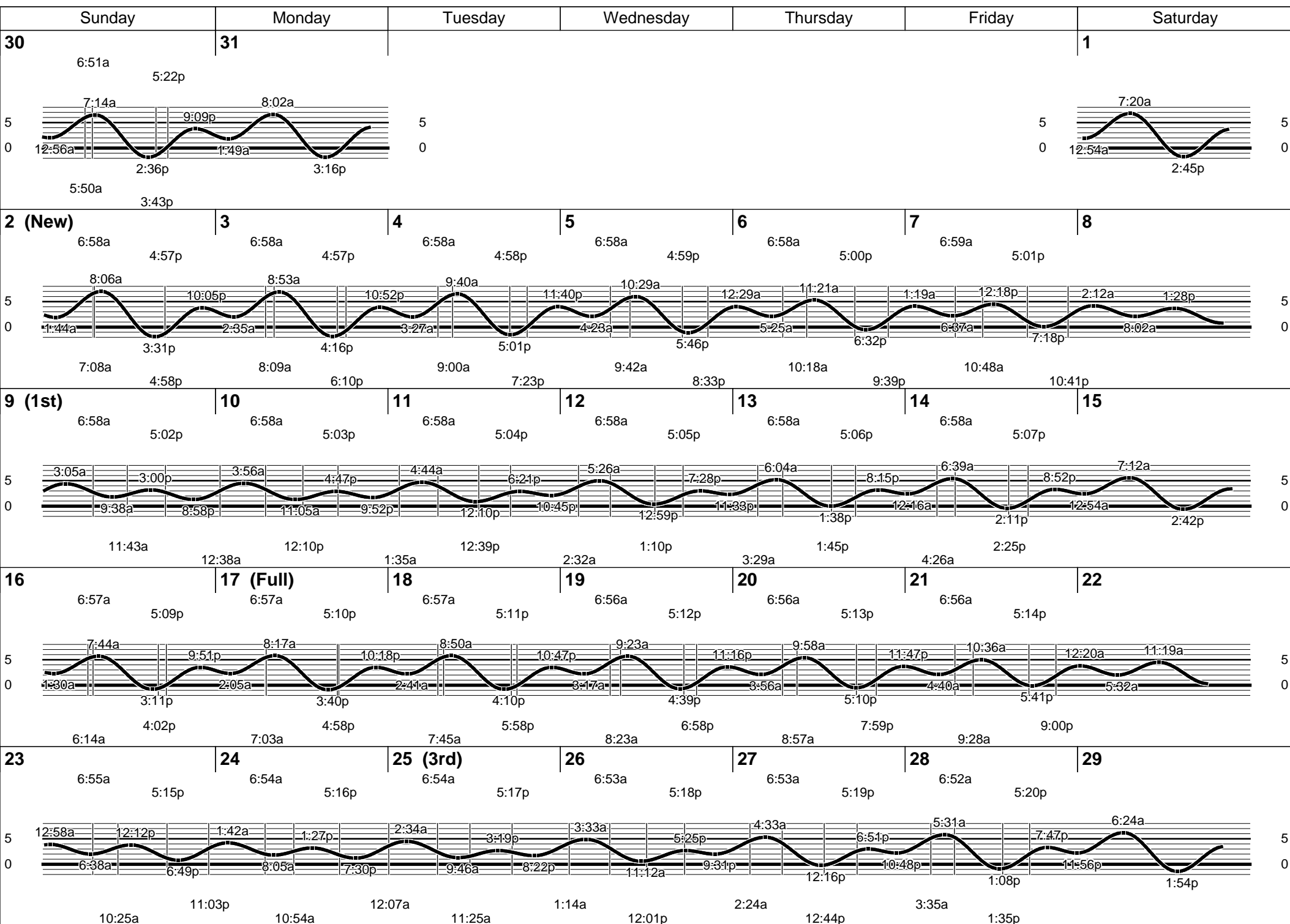
Pump Out Location	Inspection Date				
	12/02/21	12/09/21	12/16/21	12/23/21	12/30/21
Gwy A, A	W	W	W	W	W
Gwy A, B	W	W	W	W	W
Parker's Public Dock, A	W	W	W	W	W
Parker's Public Dock, B	W	W	W	W	W
Parker's Public Dock, C	W	W	W	W	W
Dock 9	W	W	W	W	W
Basin 6 South	W	W	W	W	W
Basin 6 North	W	W	W	W	W
Davie's Launch Ramp, A	W	W	W	W	W
Station 31, A	W	W	W	W	W
Station 31, B	W	W	W	W	W
Station 21	NW	W	W	W	W
Basin 1, Gwy 2	W	W	W	W	W
Basin 1, Gwy 4	W	W	W	W	W
Basin 2, Gwy 8	W	W	W	W	W
Basin 2, Gwy 11	W	W	W	W	W
Basin 3, Gwy 16	W	W	W	W	W
Basin 3, Gwy 19	W	W	W	NW	NW
Basin 4, Gwy 28	W	W	W	W	W
Basin 4, Gwy 31	W	W	W	W	W
Basin 5, Gwy 33	W	W	W	W	W
Basin 5, Gwy 34	N/A	W	W	W	W

KEY
W = Working
NW = Not Working
N/A = Not Applicable

California, Los Angeles, Long Beach, Inner Harbor

January 2022

N 33° 46.3' / W 118° 12.6'



MAC Report

November 2021



SUBMITTED BY THE MARINE BUREAU



TABLE OF CONTENTS

1. Marinas and Waterways
2. Beaches and Waterways
3. Marine Maintenance Work Order Graphs
4. Pump Out Inspection Report
5. Tide Table



MARINAS AND WATERWAYS

Accomplishments

- ❖ Staff resurfaced and restriped Bayshore Pickleball and Basketball Courts.
- ❖ Staff replaced the old “Boat owner parking only” signs and installed new Bike route signs in the City.
- ❖ Staff completed installing the Christmas trees in the Bay.
- ❖ Staff repaired the damaged sidewalk at the Long Beach Yacht Club.

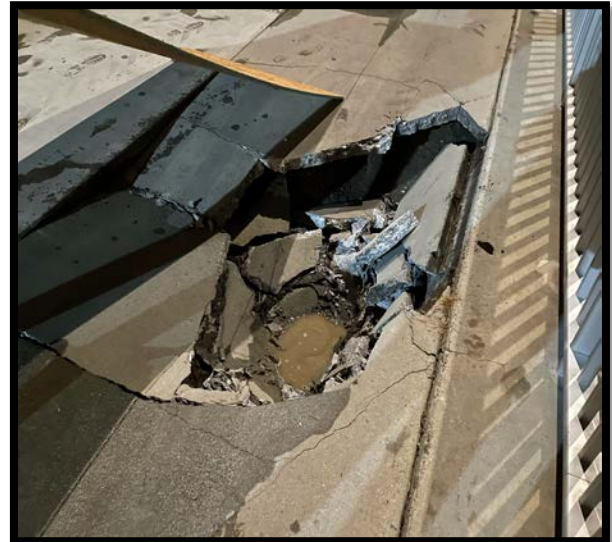
Projects in the work

- ❖ Staff is in the process of replacing all the damaged and missing signs throughout the Long Beach Shoreline Marina. Staff has already replaced all the “Gangway” and “No Visitor” signs. 90% completed
- ❖ Staff is in the process of retrofitting the existing twelve (12) booster pumps from a wet system to a dry fire suppression system in the Long Beach Shoreline Marina. 80% completed
- ❖ Staff is in the process of making improvements to the Alamitos Bay Marina office including painting the interior of the building. 50% completed
- ❖ Staff is in the process of inspecting and tightening all the loose fingers throughout the Long Beach Shoreline Marina. 40% completed
- ❖ Staff is in the process of inspecting and replacing all the damaged gangway water supply lines throughout Long Beach Shoreline Marina, as needed. 45% completed
- ❖ Staff is in the process of repairing the restroom plumbing throughout Long Beach Shoreline Marina. 35% completed



MARINAS AND WATERWAYS

- ❖ Staff is in the process of repairing concrete fingers throughout Long Beach Shoreline Marina. 10% completed
- ❖ Staff is in the process of replacing exterior doors at the Belmont Pool office. 50% completed
- ❖ Staff is in the process of replacing all electrical components (breakers, receptacles, etc.) inside the pedestals located throughout Shoreline & Rainbow Harbor Marina's. 25% completed
- ❖ Staff is in the process of installing two (2) new power pedestals on long dock North. 50% completed
- ❖ Staff is in the process of painting memorial benches in ABM. 50% completed
- ❖ Staff is in the process of installing two isolation valves for all 31 Gangway's in Shoreline Marina. 5% completed
- ❖ Staff is in the process of installing pony gates throughout Basin 3. 20% completed
- ❖ Staff is in the process of installing two isolation valves for all 33 Gangway's in Shoreline Marina. 85% completed
- ❖ Staff is in the process of preparing and painting all trash enclosure doors on Mole road lot. 80% completed
- ❖ Staff is in the process of repairing seawall on Bayshore. 85% complete
- ❖ Staff is in the process of retrofitting all pedestals inside of Rainbow Harbor Marina (SHM 1,2,3,4 docks 8 & 9) 35% completed
- ❖ Staff is in the process of painting curbs and guard post throughout DTM. 85% completed



BEACHES AND WATERWAYS

Accomplishments

- ❖ Beach Maintenance staff removed over 97 tons of trash and debris from the beaches and inner bays.
- ❖ Beach Maintenance staff removed trash and debris from the beach waterline.
- ❖ Beach Maintenance staff serviced 300 trash receptacles during the month of November.
- ❖ Beach Maintenance staff built up and maintained the berm on the East Peninsula beach between 62nd – 72nd place.
- ❖ Beach Maintenance staff swept the bike/pedestrian path.
- ❖ Beach Maintenance staff conducted weekly cleanups of several homeless encampments throughout the beach areas.
- ❖ Beach Maintenance staff raked and cleaned throughout beach areas.
- ❖ Queensway Bay staff conducted a cleaning of all 60 basket filters in the Rainbow Lagoon; six days per week, twice per day. Staff replaces and cleans all 60 baskets once a month.
- ❖ Queensway Bay staff conducted daily removal of water borne debris and algae in the Rainbow Lagoon, Rainbow Harbor Marina and Long Beach Shoreline Marina using hand nets.
- ❖ Queensway Bay staff removed trash from docks, three times per week.
- ❖ Queensway Bay staff conducted daily cleaning and maintenance of all trash skimmers on the docks, six days per week.
- ❖ Queensway Bay staff conducted monthly inspections on all docks throughout Rainbow Harbor Marina.
- ❖ Queensway Bay staff serviced all sewage pumps on the commercial docks 1-6.
- ❖ Queensway Bay staff conducted weekly encampment posting and cleanups.

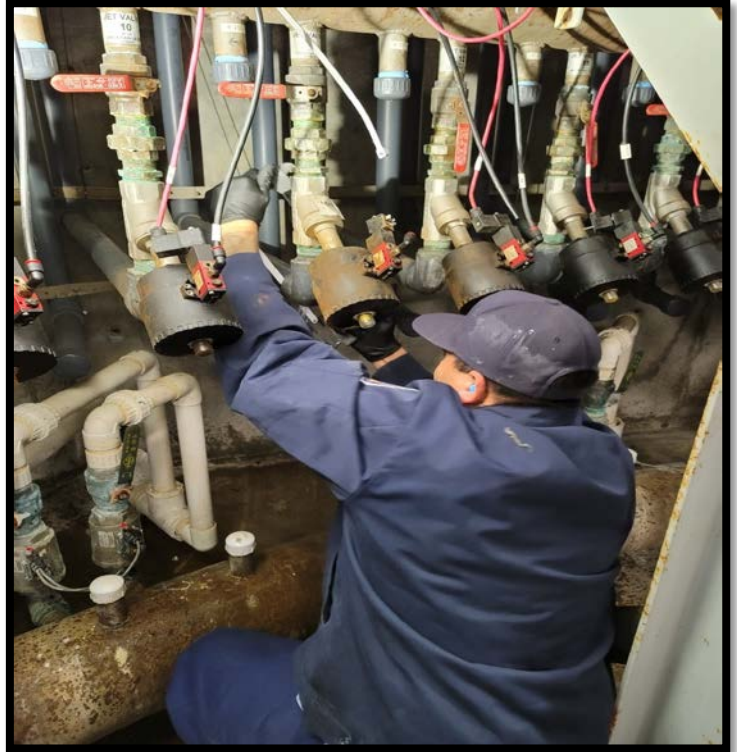


BEACHES AND WATERWAYS

- ❖ Queensway Bay installed new concrete bench in Shoreline Aquatic Park.
- ❖ Queensway Bay staff completed 76 work orders and 22 Go Long Beach request for the month of November.
- ❖ Queensway Bay staff conducted daily graffiti removal of the entire Rainbow Harbor area, including the Queensway bridge bike path and the Pier Point parking lot.
- ❖ Queensway Bay staff performed routine maintenance on the Wave and Dolphin Fountain.
- ❖ Queensway Bay staff power washed the exterior of the Wave Fountain bi-weekly.
- ❖ Queensway Bay staff repaired plumbing for Wave fountain jet.
- ❖ Queensway Bay staff removed approximately 20 tons of debris from waterways.
- ❖ Queensway Bay staff installed two metal bollards near Dock 8.
- ❖ Queensway Bay crew initiated CIP to repair public elevator at Birdcage
- ❖ Queensway Bay crew installed new dispensers, mirrors, and hand dryers at Pierpoint restroom.

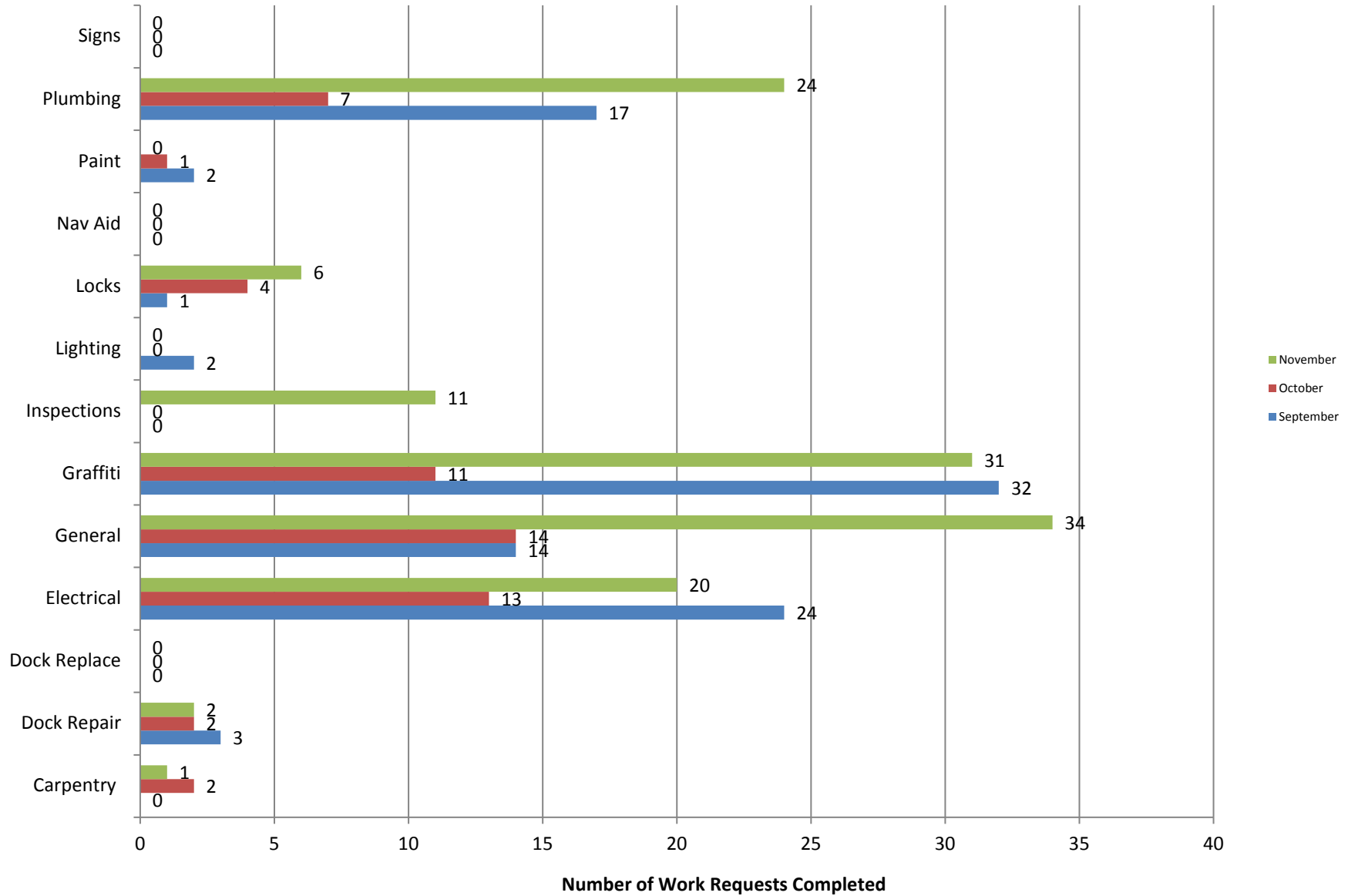
Projects in the works

- ❖ Beach Maintenance staff is continuing the process of rebuilding sections of the peninsula where erosion occurs.
- ❖ QWB crew scheduled to replace two public drinking fountains



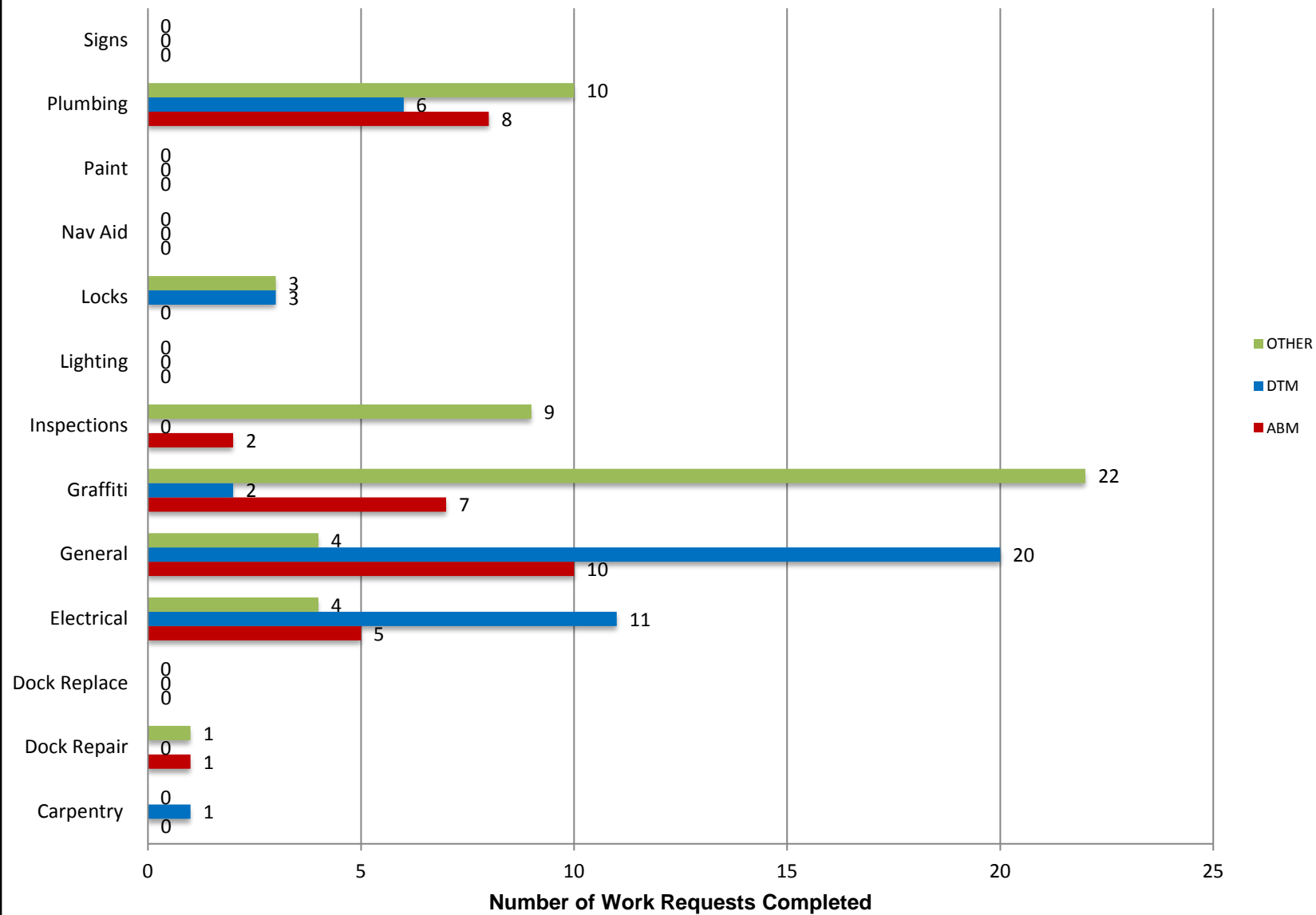
Marine Maintenance

Work Request Completed by Month



Marine Maintenance

Work Requests Completed by Location



PUMPOUT INSPECTION REPORT

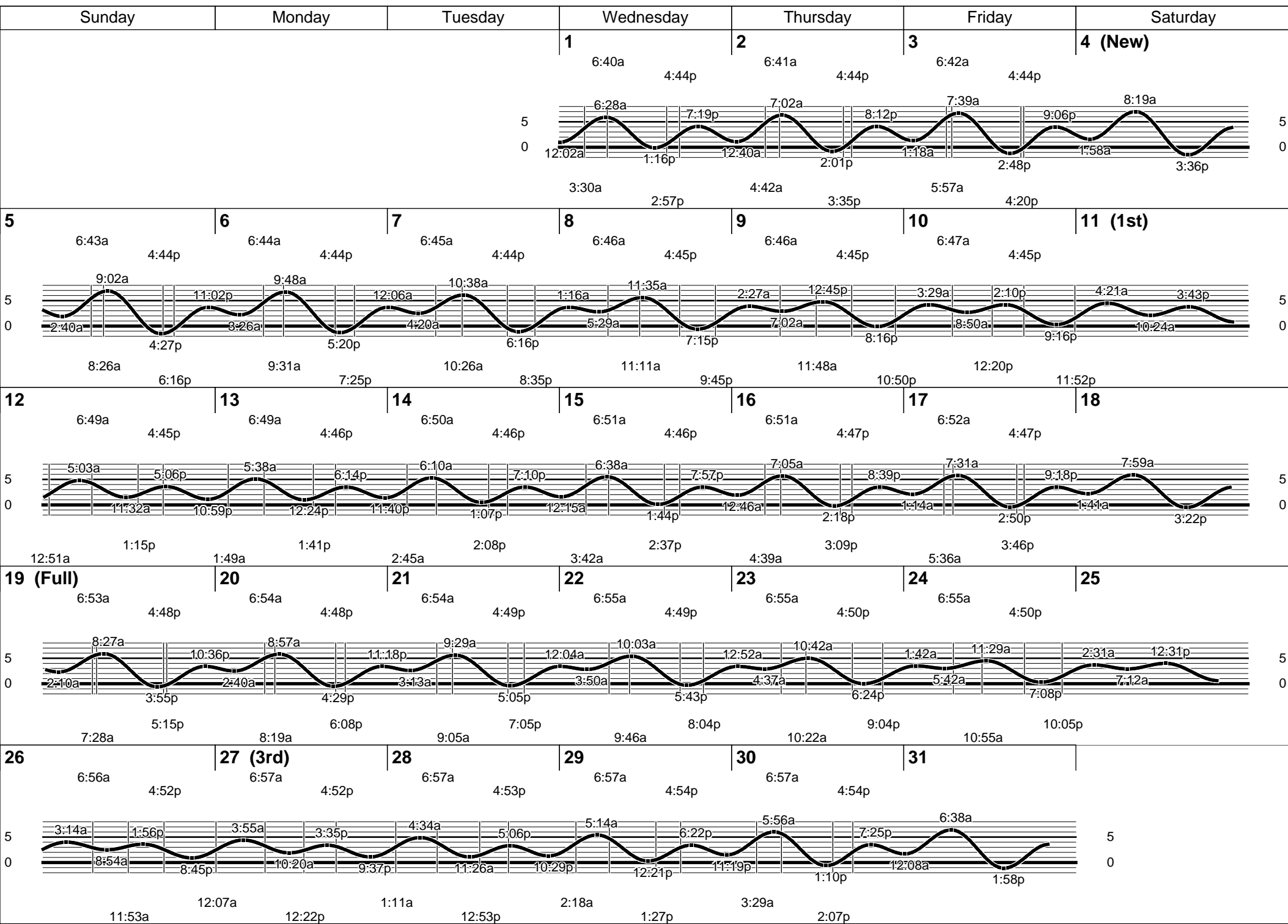
Pump Out Location	Inspection Date			
	11/04/21	11/11/21	11/18/21	11/25/21
Gwy A, A	W	W	W	W
Gwy A, B	W	W	W	W
Parker's Public Dock, A	W	NW	W	W
Parker's Public Dock, B	W	W	W	NW
Parker's Public Dock, C	W	W	W	W
Dock 9	NW	NW	NW	NW
Basin 6 South	W	W	W	W
Davie's Launch Ramp, A	W	W	W	W
Station 31, A	W	W	W	W
Station 31, B	W	W	W	W
Station 21	W	W	W	W
Basin 1, Gwy 2	W	W	W	W
Basin 1, Gwy 4	W	W	W	W
Basin 2, Gwy 8	W	W	W	W
Basin 2, Gwy 11	W	W	W	W
Basin 3, Gwy 16	W	W	W	W
Basin 3, Gwy 19	W	W	W	W
Basin 4, Gwy 28	W	W	W	W
Basin 4, Gwy 31	W	W	W	W
Basin 5, Gwy 33	W	W	W	W
Basin 5, Gwy 34	W	W	W	W

KEY
W = Working
NW = Not Working
N/A = Not Applicable

California, Los Angeles, Long Beach, Inner Harbor

December 2021

N 33° 46.3' / W 118° 12.6'



LONG BEACH FIRE DEPARTMENT - MARINE SAFETY DIVISION

MONTHLY ACTIVITY REPORT

November 2021

Calendar Year

	ACTIVITY	NOV 2021	NOV 2020	CHANGE +/-	YTD 2021	YTD 2020	CHANGE +/-
	<i>Entire Division Stats (Boats & Beach)</i>						
1	Boat Assists/Rescues	53	77	(24)	1,326	1,227	99
2	People On-Board	71	142	(71)	2,652	3,804	(1,152)
3	Value of Vessels	1,551,500	1,839,000	(287,500)	32,109,350	27,398,803	4,710,547
4	Citations	5	13	(8)	74	78	(4)
5	Fire Investigations	4	1	3	76	23	53
6	Medical Aids (A) - Minor	87	110	(23)	8,004	6,788	1,216
7	Medical Aids (B+C) - Major	17	4	13	250	179	71
8	Swimming Rescues	23	21	2	4,222	3,146	1,076
	<i>Boat Stats Only</i>						
9	Responses/Marina [RB's Only]	1,007	957	50	16,428	17,287	(859)
10	Boat Fires	-	1	(1)	8	15	(7)
11	Impounds	11	12	(1)	96	78	18
12	Vessel De-Watering	11	15	(4)	142	133	9

Source: Stats By Month