

City of Long Beach ----- Arborist Report



1651 San Francisco Ave
Long Beach CA 90813
Phone (562) 570-2731

Prepared by: Jerry Rowland
Certified Arborist # WE 6353 A
Fax (562) 570-2819

Date: September 8th 2012

Email: Jerry_Rowland@longbeach.gov

Location: **2nd St (Quincy Ave to Bayshore Ave)**

Requestor: Jim Fisk PW-ASSET MGT-REAL ESTATE-ACQUI **Office #** (562) 570-3863

Purpose of report: To inspect trees that currently line 2nd Street from Quincy Ave to Bayshore Drive for tree and site conditions which include the trees current health, offsets to grates and/or sidewalk, and tree skirts. Make any recommendation concerning type of current tree in place and future problems that can arise from this species.

Inspections:

Inspection was made and found a total of 93 trees in the impacted area, 77 of which were *Pryus calleryana* trees or more commonly known as the Ornamental Pear or Bradford Pear, This species is deciduous and can grow 30' to 40' in height in a park type environment where spacing is not an issue, The neat dense upward canopy of the Bradford Pear makes it more of a desirable tree to plant in cramped urban spaces.

Unfortunately there are many factors that are currently inhibiting the full potential of the trees growth and they are as follows, inhibited grow space, smog from vehicles, soil conditions and poor branching structure that is associated with this species. Currently most of the trees are in fair to good condition considering the environment they are planted in. however this species does have the ability to grow and can be damaging to the infrastructure which includes the sidewalk, curbs, grates and tree skirts. Furthermore this species because of the weakened branching attachments makes this a short lived tree, 25 years is the estimate provided by Wikipedia.



Findings :

Of the (77) Bradford Pears, there are a total of (11) marked for removal due to multiple cuts to the trees root system in order to make repairs, (2) pears are being removed due to the condition of the trees being dead and (1) Liquidambar is also being removed due to the multiple cuts needed in order to make repairs. Due to the size of the offending roots, Root Shaving would not be advisable considering that there are multiple sides of the trees root system that would be severed in order to make the necessary repairs and doing so would jeopardize the structural support system.

Other Notes:

The tree at located at 480 E 2nd St (Park Side) N/Tree was marked for removal, although I found a 1" offset to the sidewalk, the repairs can be made with out removing the tree due to the offset being on one side of the tree.

Continued

Tree Removals:

Location:	Species	Offsets	Notes
4600 E 2nd St	Bradford Pear	3"	Multiple sides of offsets
4606 E 2nd St E/Tree	Bradford Pear	2 1/2"	Multiple sides of offsets
4606 W 2nd St E/Tree	Bradford Pear	Dead	Multiple sides of offsets
4801 E 2nd St (Park Side) S/Tree	Bradford Pear	2"	Multiple sides of offsets
184 Park Ave	Bradford Pear	1"	Cracked Sidewalk
4923 E 2nd St	Bradford Pear	1 1/4"	Multiple sides of offsets
5004 E 2nd St	Bradford Pear	1 3/4"	Multiple sides of offsets
5100 E 2nd St	Bradford Pear	2 1/2"	Multiple sides of offsets
5128 E 2nd St	Bradford Pear	Dead	Multiple sides of offsets
5239 E 2nd St	Bradford Pear	1 1/2"	Multiple sides of offsets
5265 E 2nd St	Bradford Pear	1"	Multiple sides of offsets
5296 E 2nd St (Glendora Side)	Liquidambar	3 1/4"	Evasive root system
5313 E 2nd St	Bradford Pear	1 3/4"	Multiple sides of offsets
5374 E 2nd St	Bradford Pear	1 3/4"	Multiple sides of offsets

Note: Due to multiple sides of root removal, it is recommended that these trees be removed for safety reasons, removing the roots will weaken the trees structural supporting root structure and in turn could cause failure.

Root Shaving Locations:

4820 E 2nd St	Bradford Pear	One side of tree only
4924 E 2nd St	Bradford Pear	One side of tree only

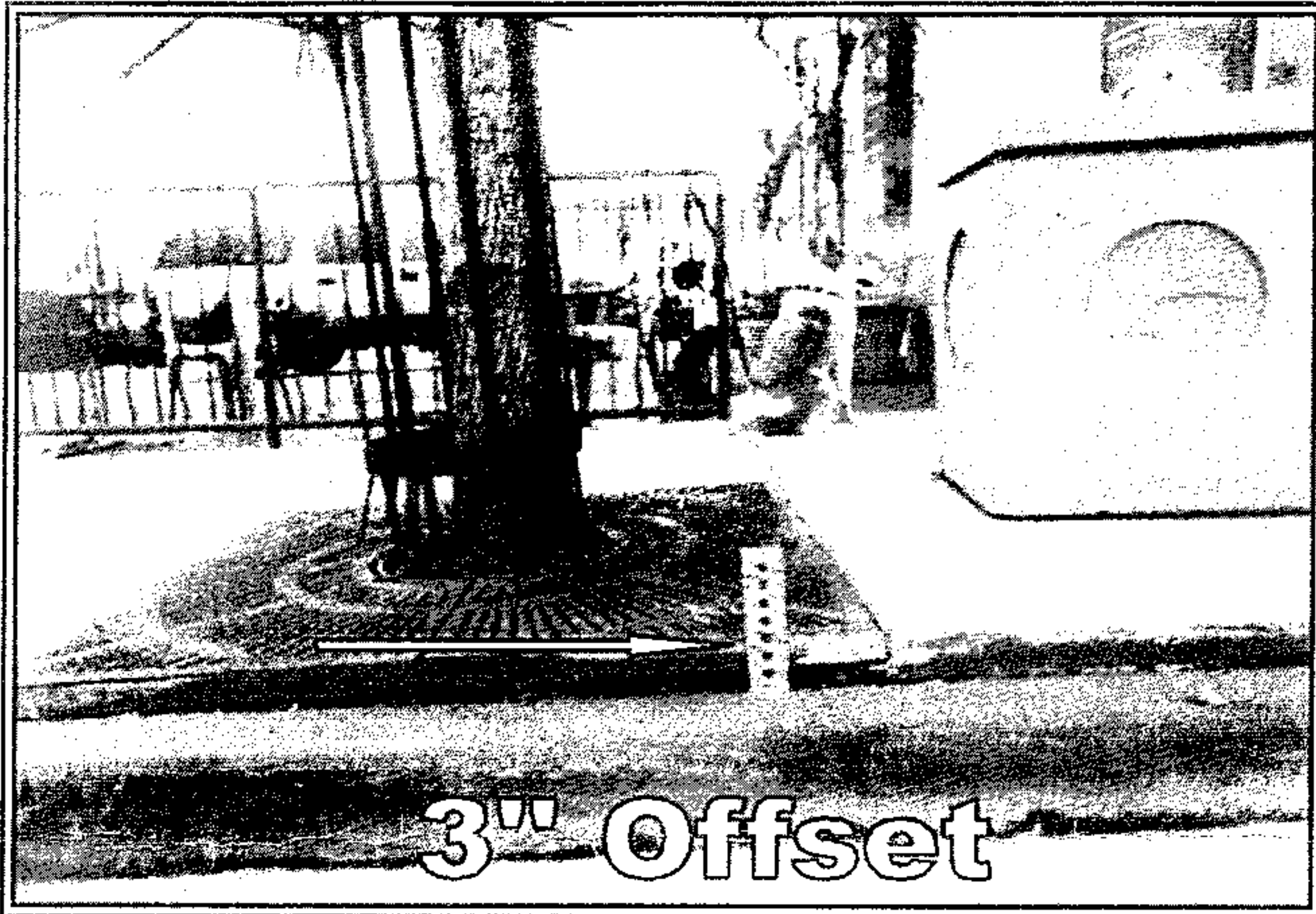
Note: Root Shaving involves the use of a vertical cutting wheel that shaves the top portion of a root system as needed in order to make the hardscape repairs, this method is currently in use in all of our sidewalk and street repair projects and has proven to be a vital tool in preserving our trees, this method works well with trees that have large diameter roots and the remaining portion of the root still has the ability to anchor the tree, the Pear Tree has a much smaller diameter size root and in most of the trees, these smaller size roots are totally removed which in turn weakens the structural stability of the tree.

Sidewalk Grinding:

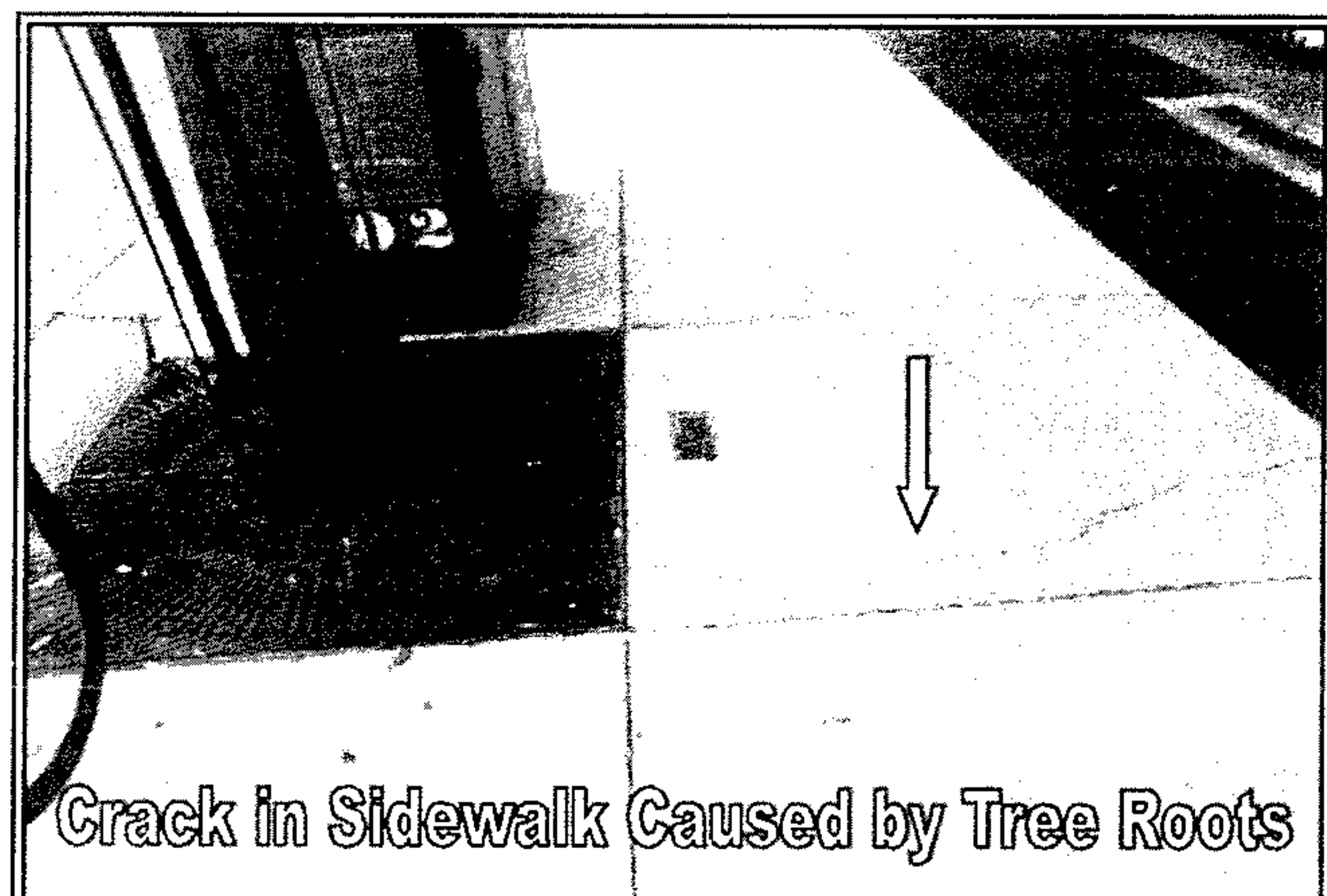
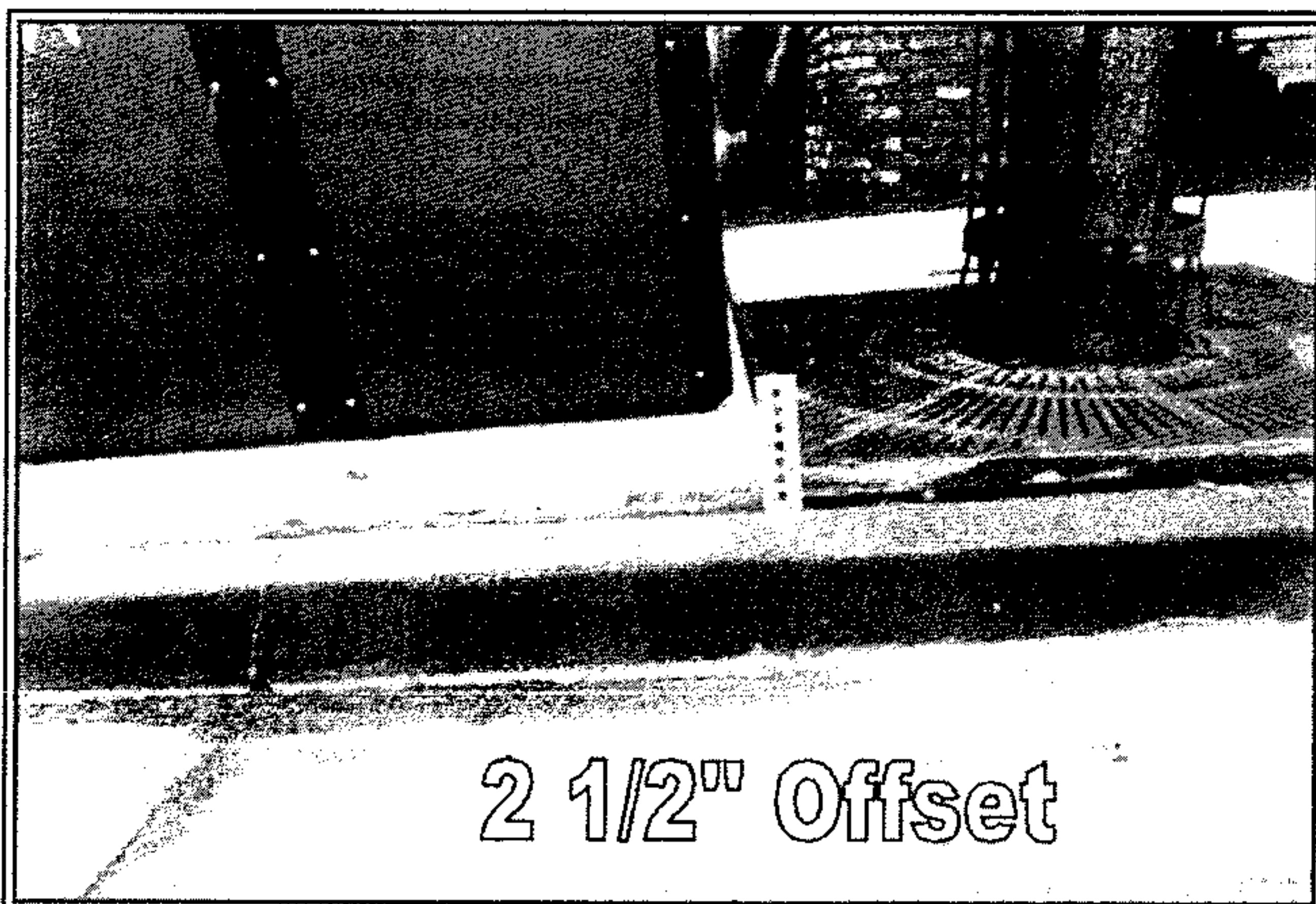
4910 E 2nd St	Minor grinding of cement only as needed			
4713 E 2nd St	"	"	"	"
4917 E 2nd St	"	"	"	"
5305 E 2nd St	"	"	"	"
5332 E 2nd St	"	"	"	"
5368 E 2nd St	"	"	"	"

Note: Sidewalk Shaving involves the use of a grinder that smooths out minor offsets and has proven to be a effective tool in regards to minor offsets. The negative side with sidewalk shaving is that it is a temporary fix, the problem will continue until either the offending roots are removed or shaved.

4600 E 2nd St



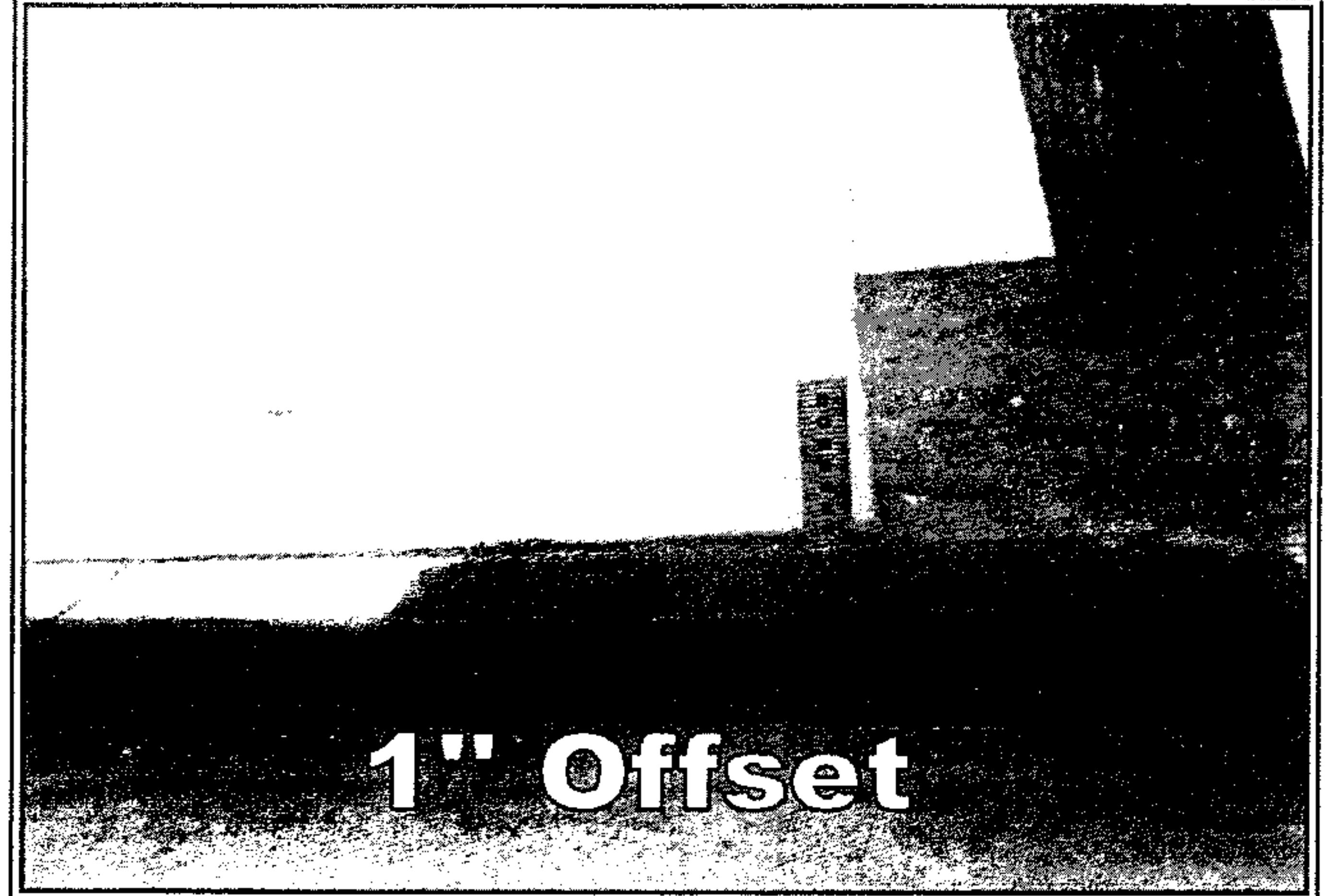
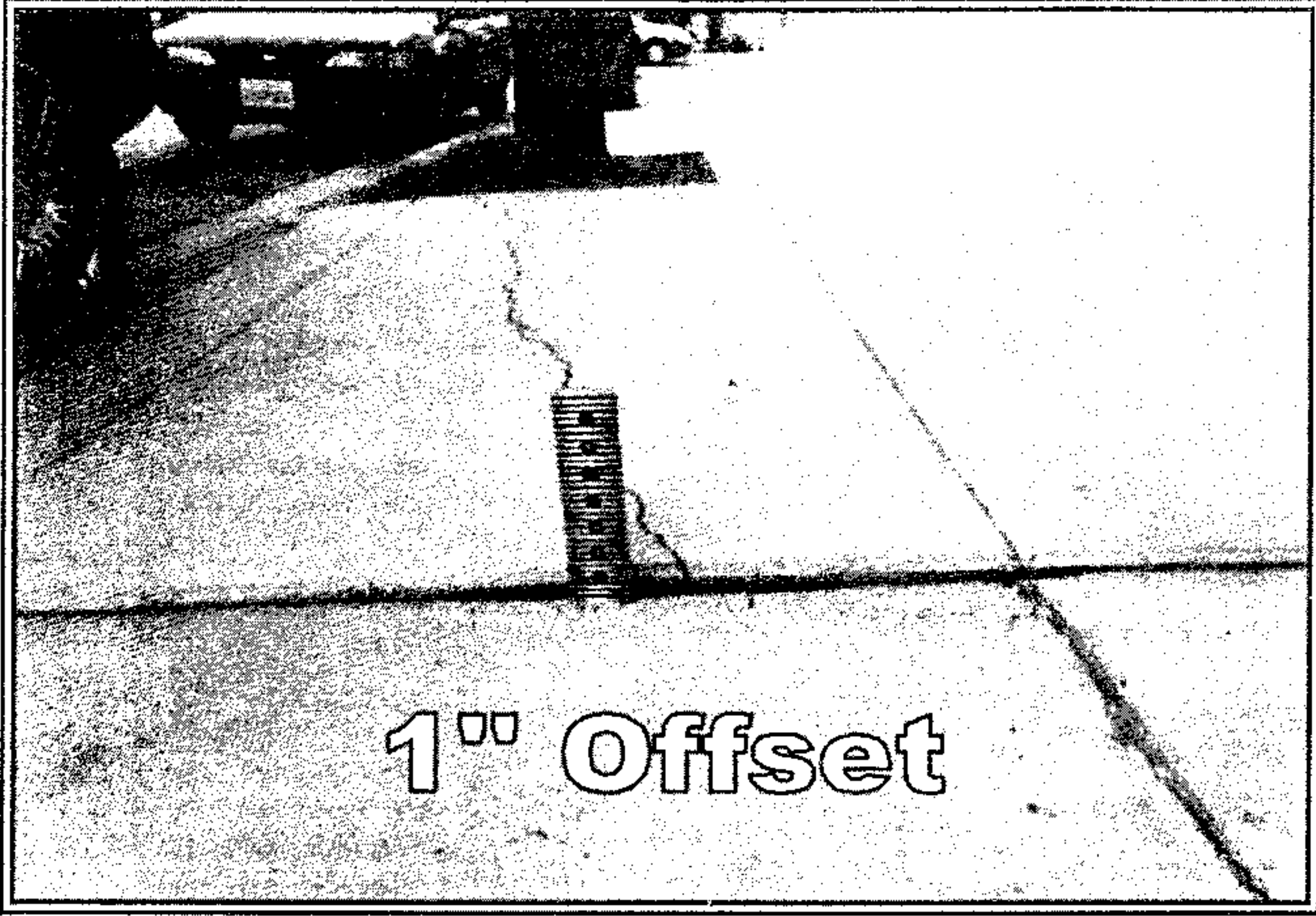
4606 E 2nd St E/Tree



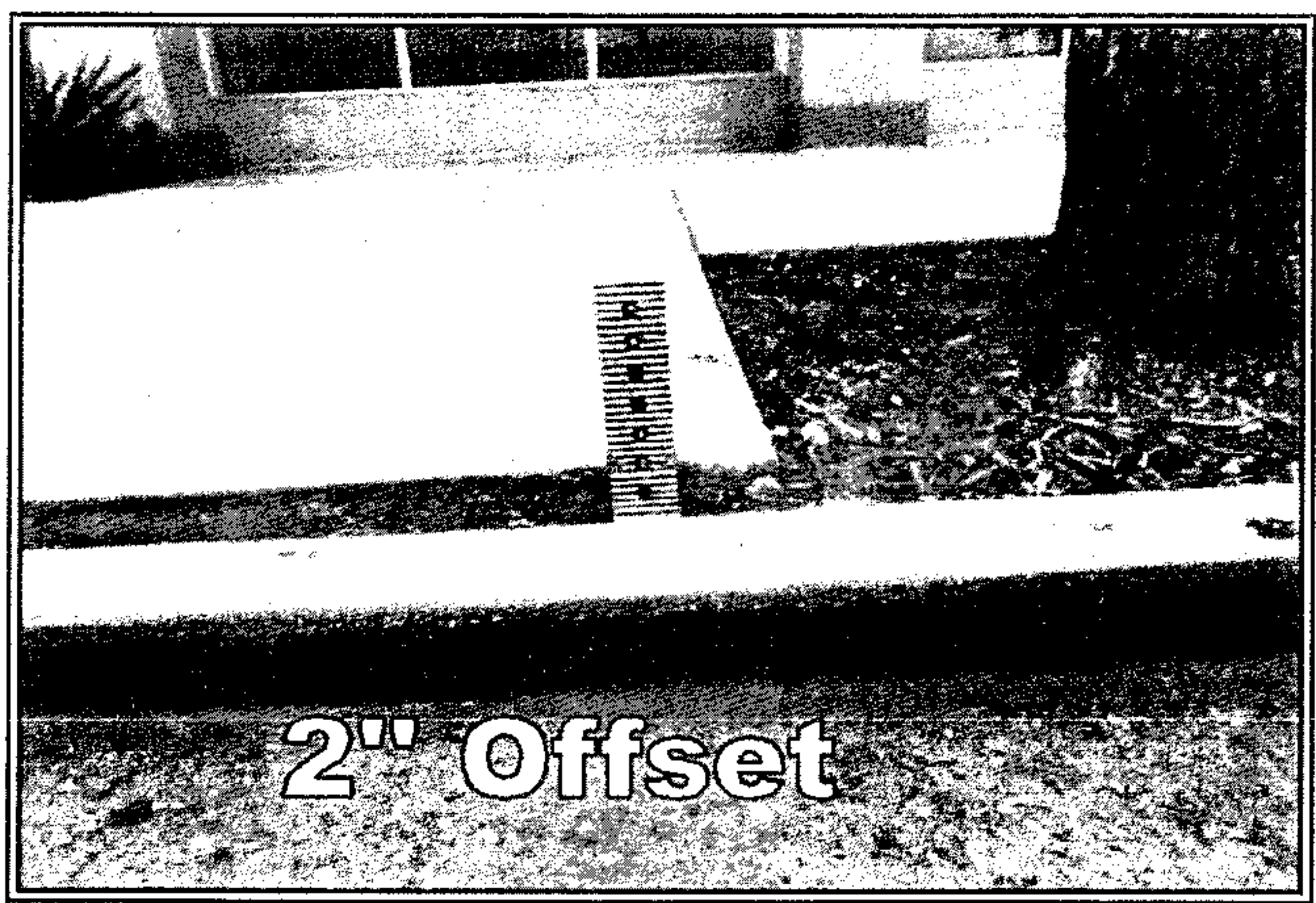
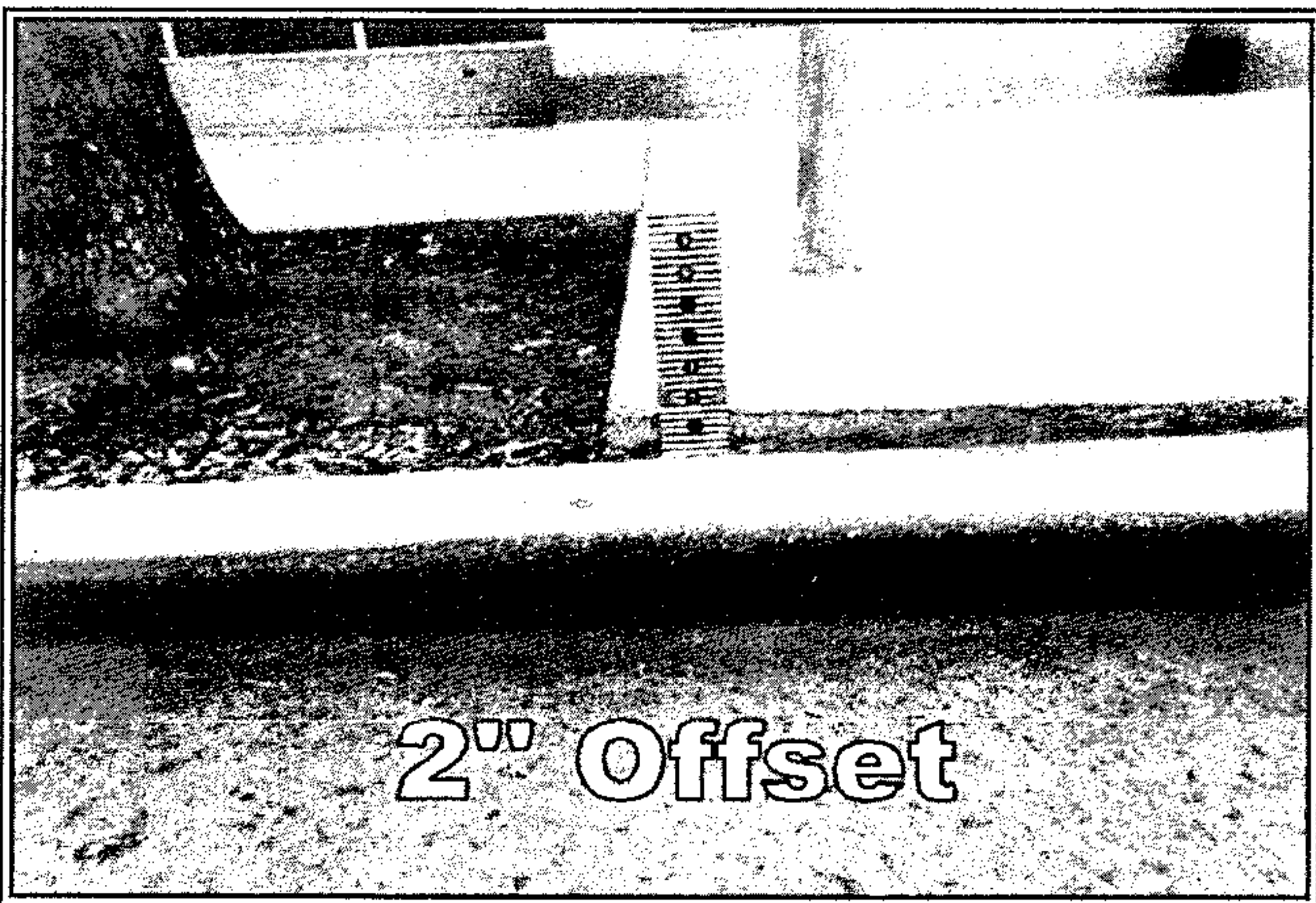
4606 E 2nd St W/Tree



184 Park Ave



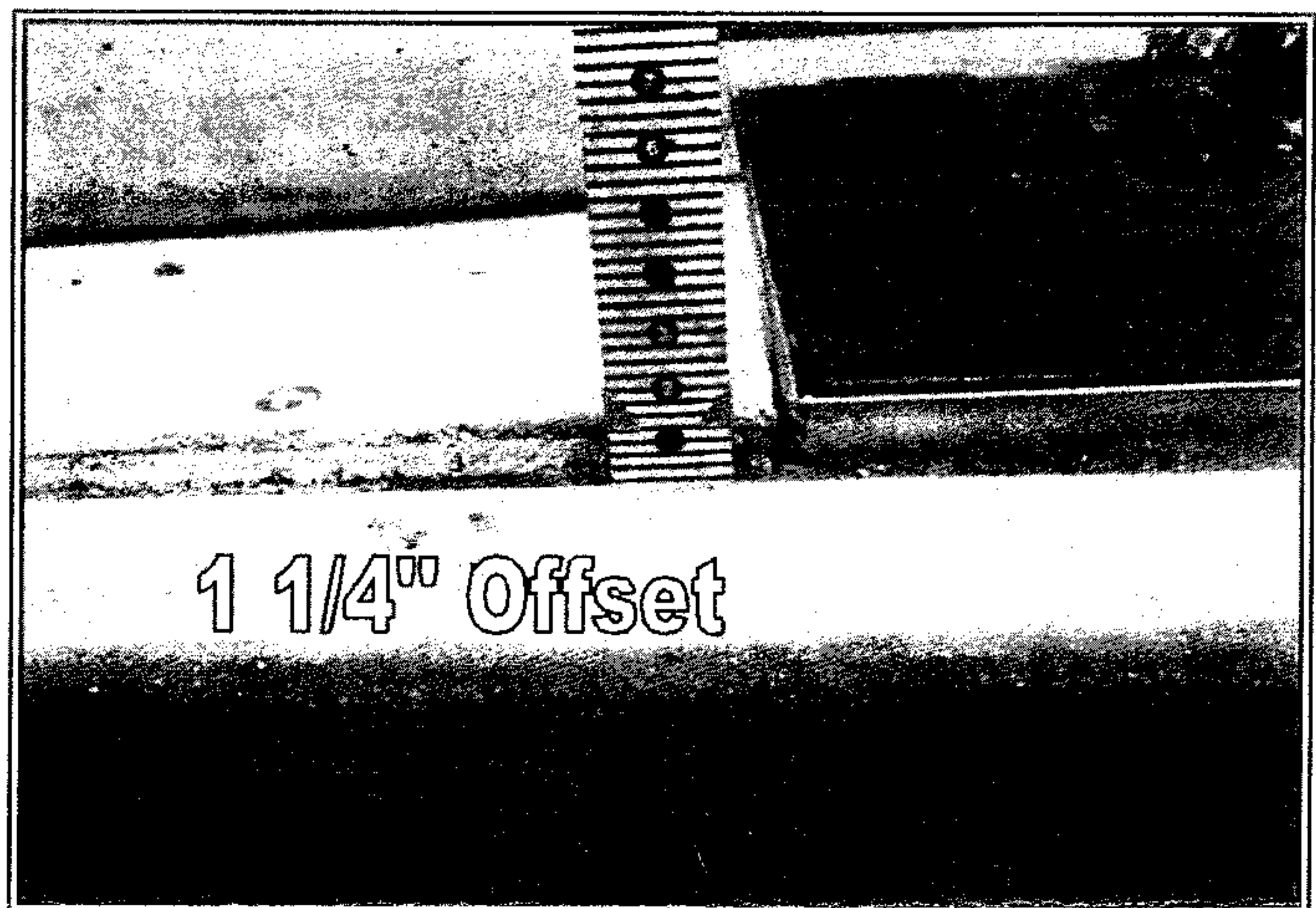
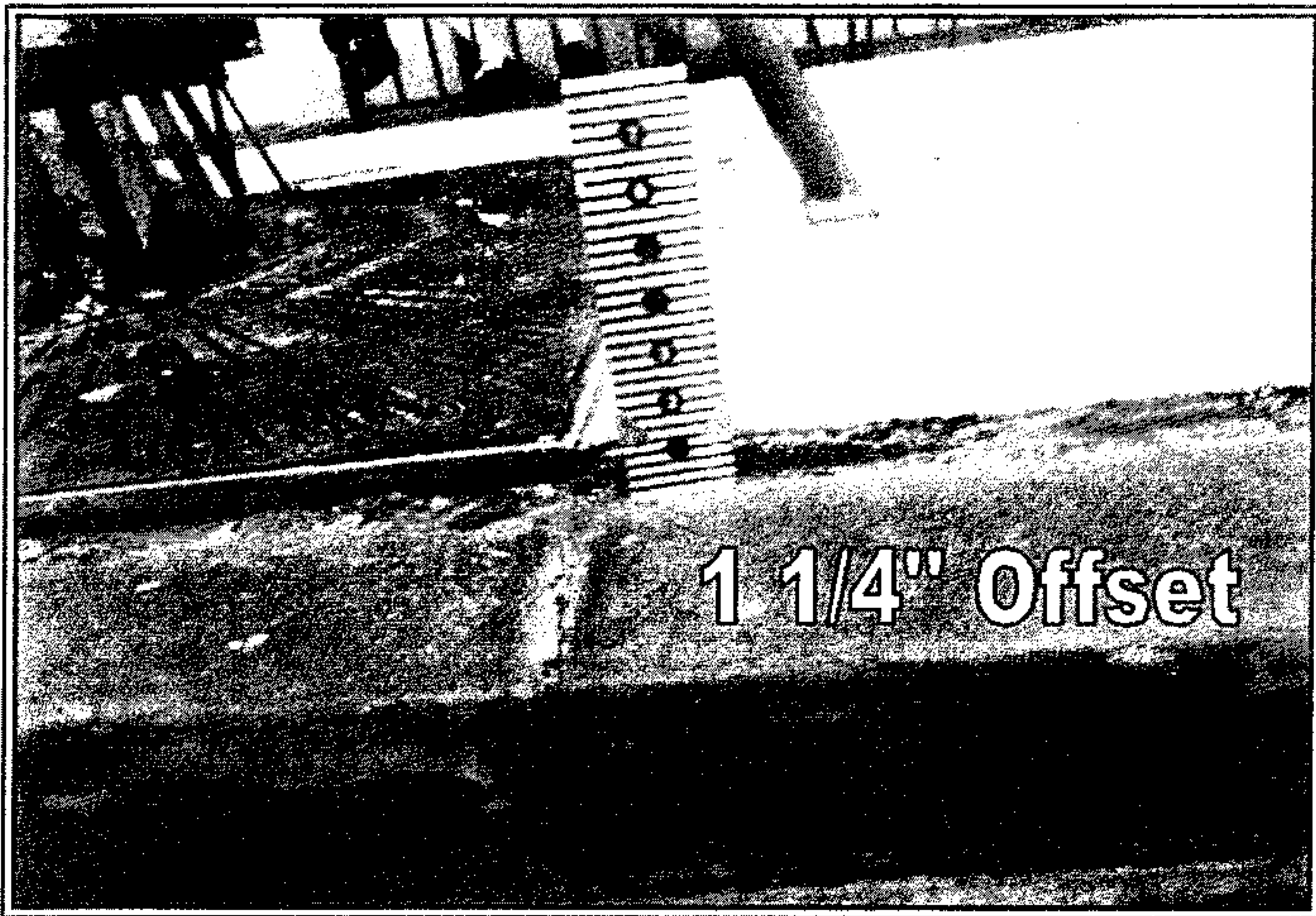
4801 E 2nd St "Park Ave Side" S/Tree



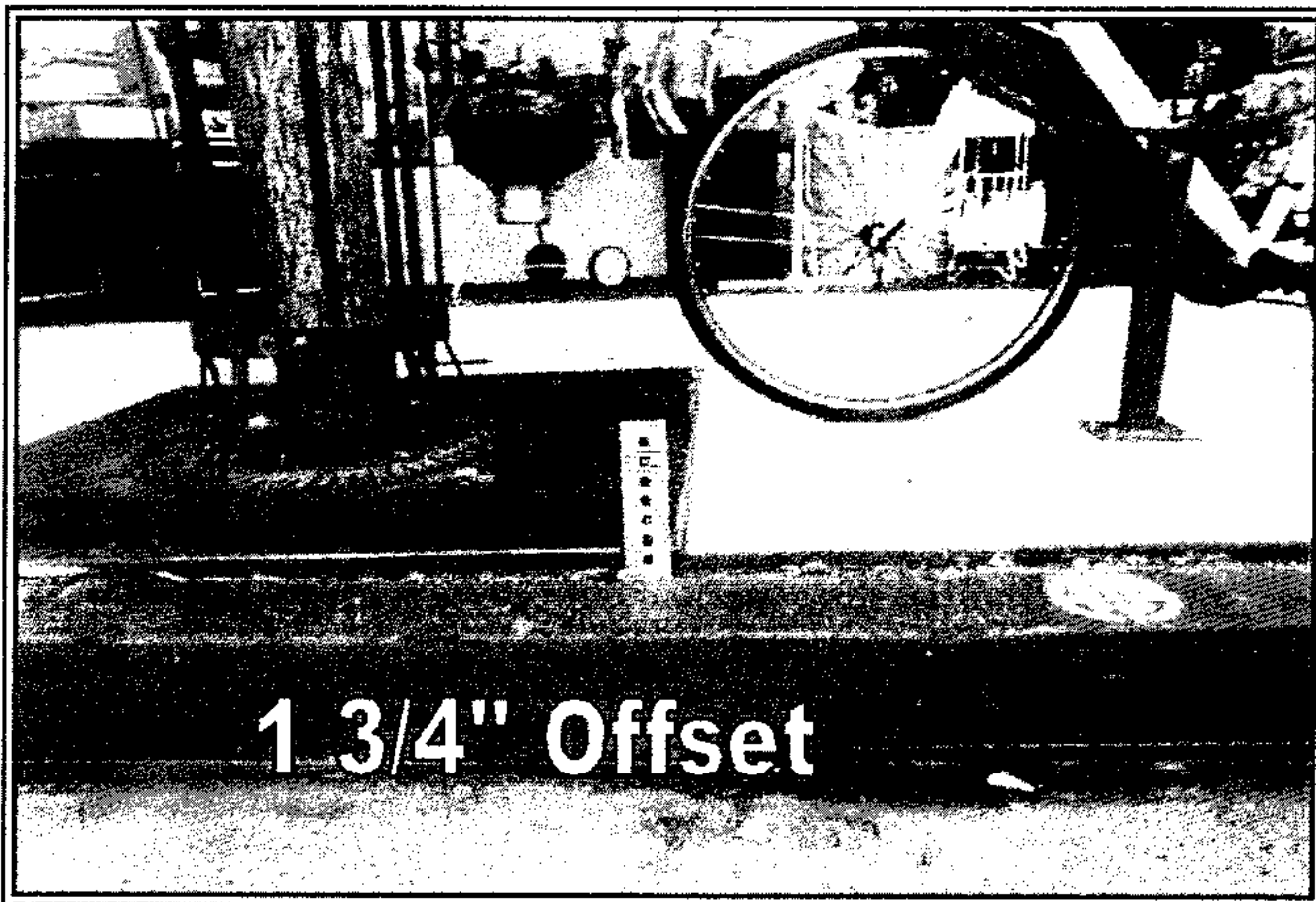
4801 E 2nd St "Park Ave Side" N/Tree



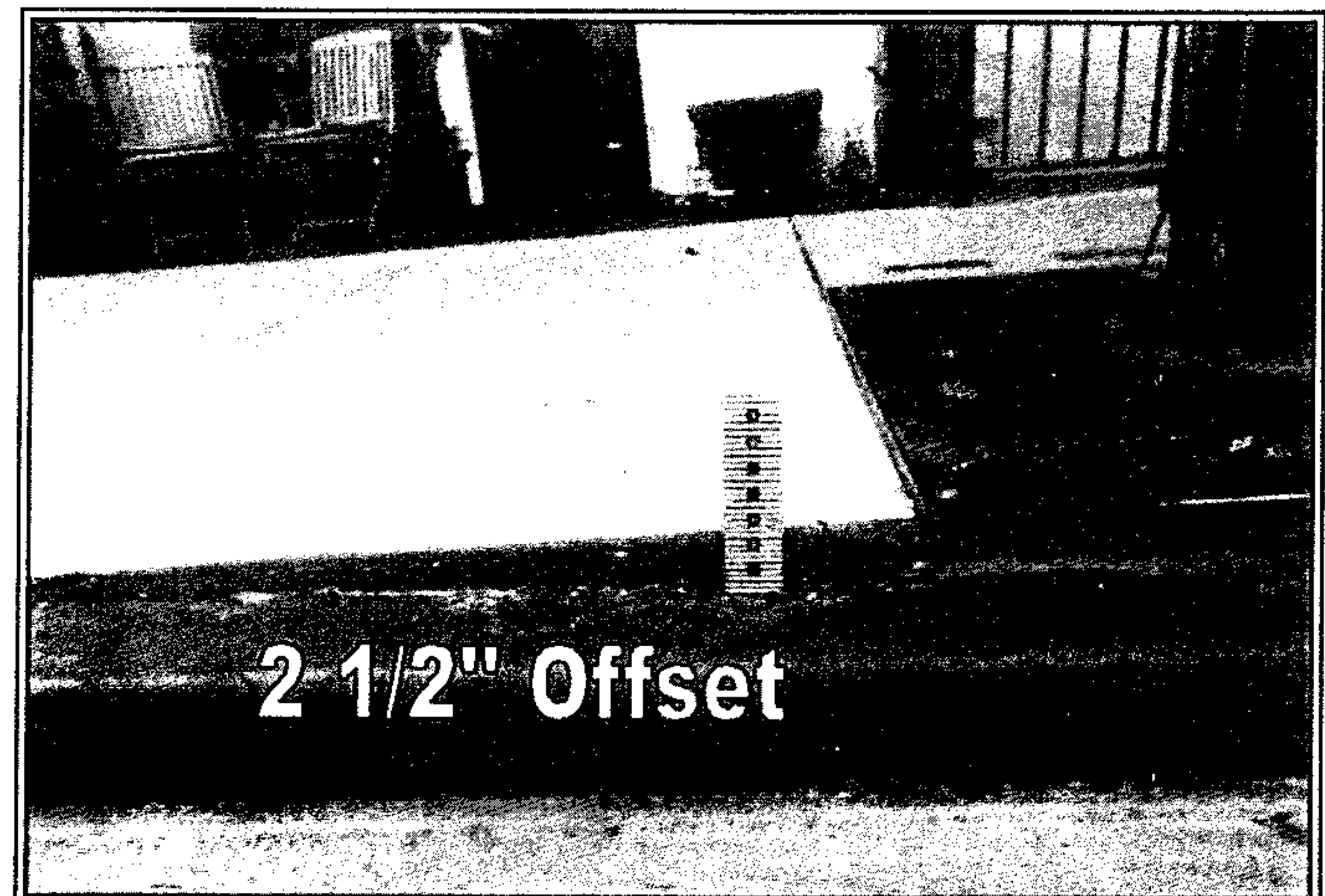
4923 E 2nd St



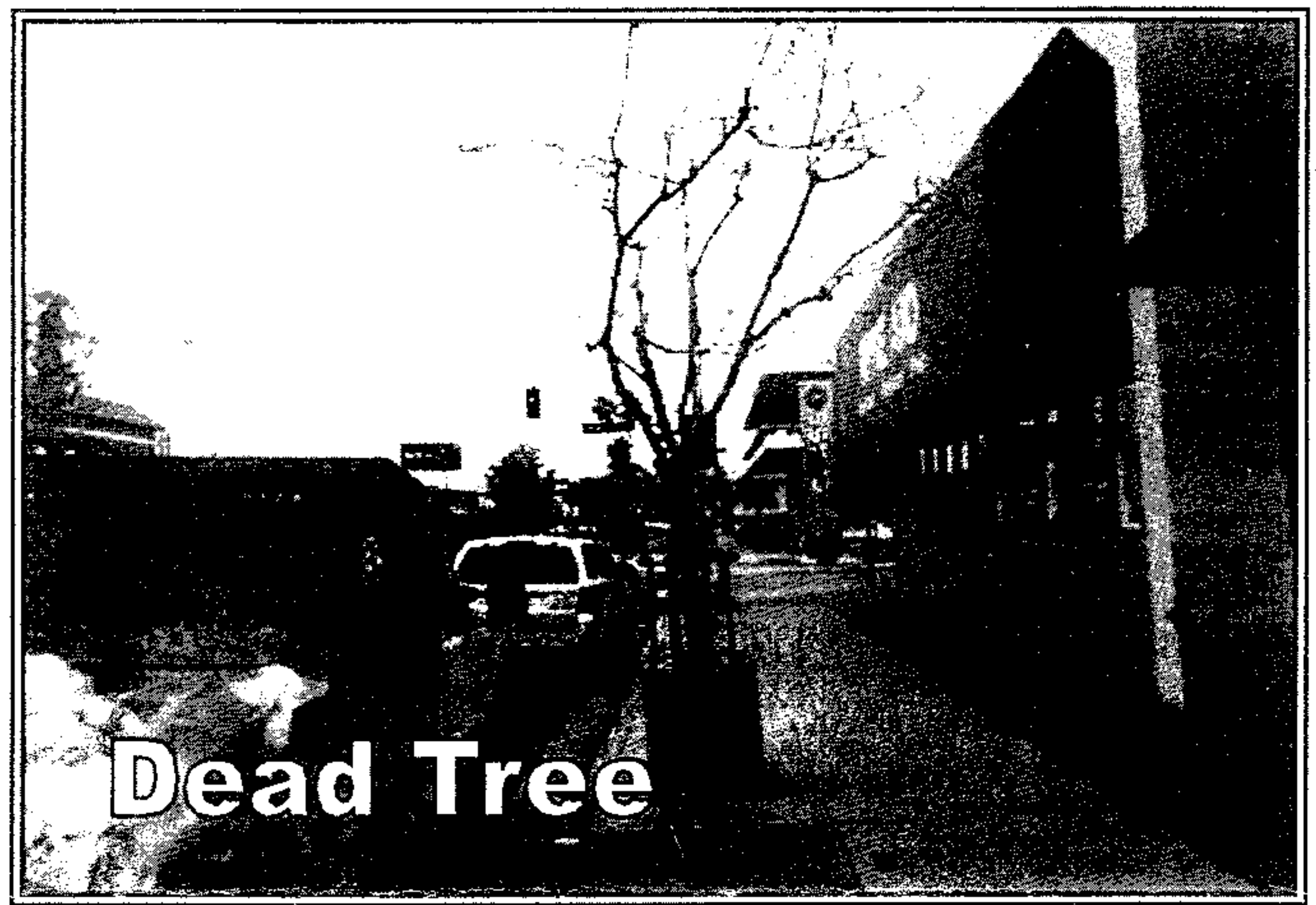
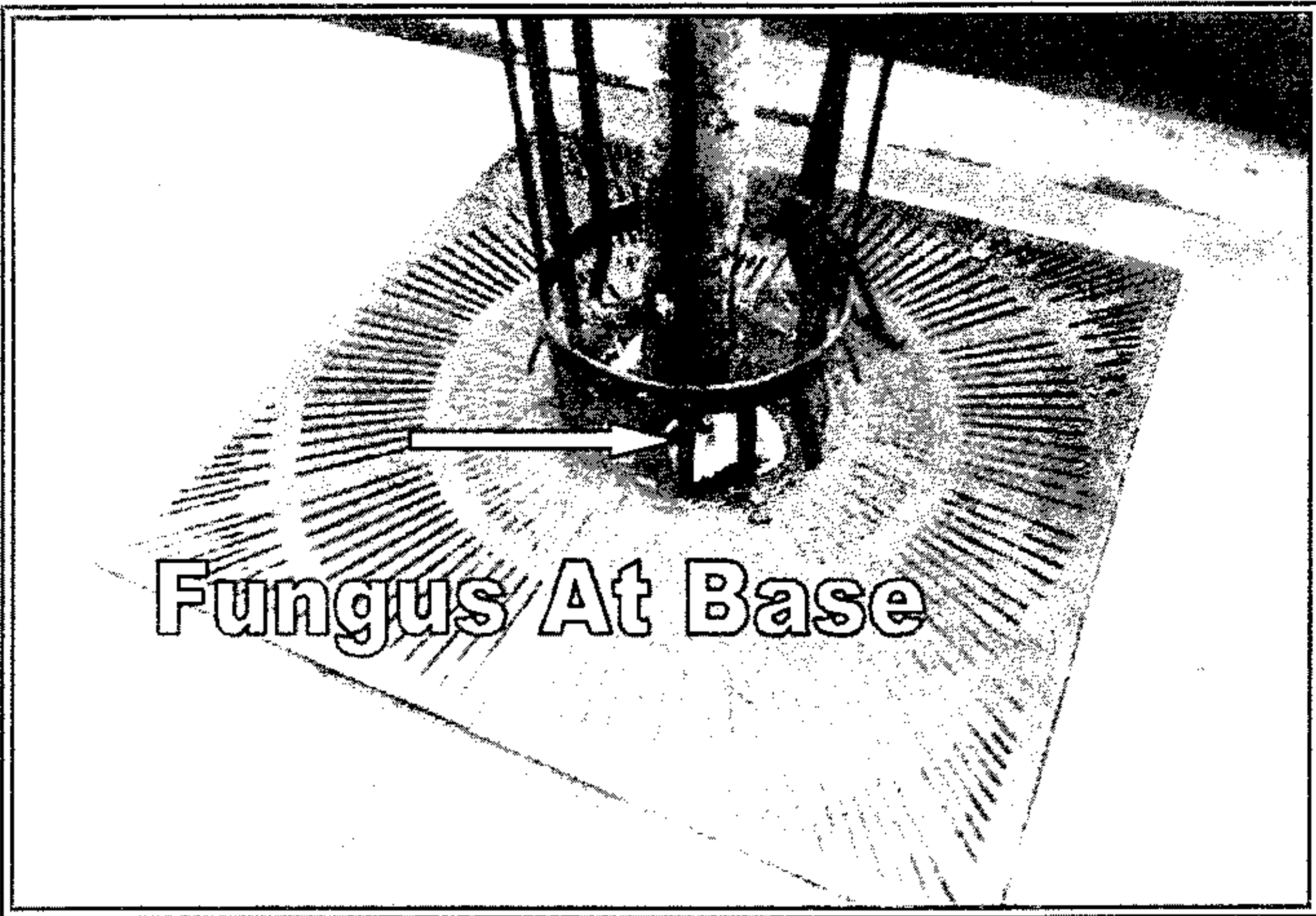
5004 E 2nd St



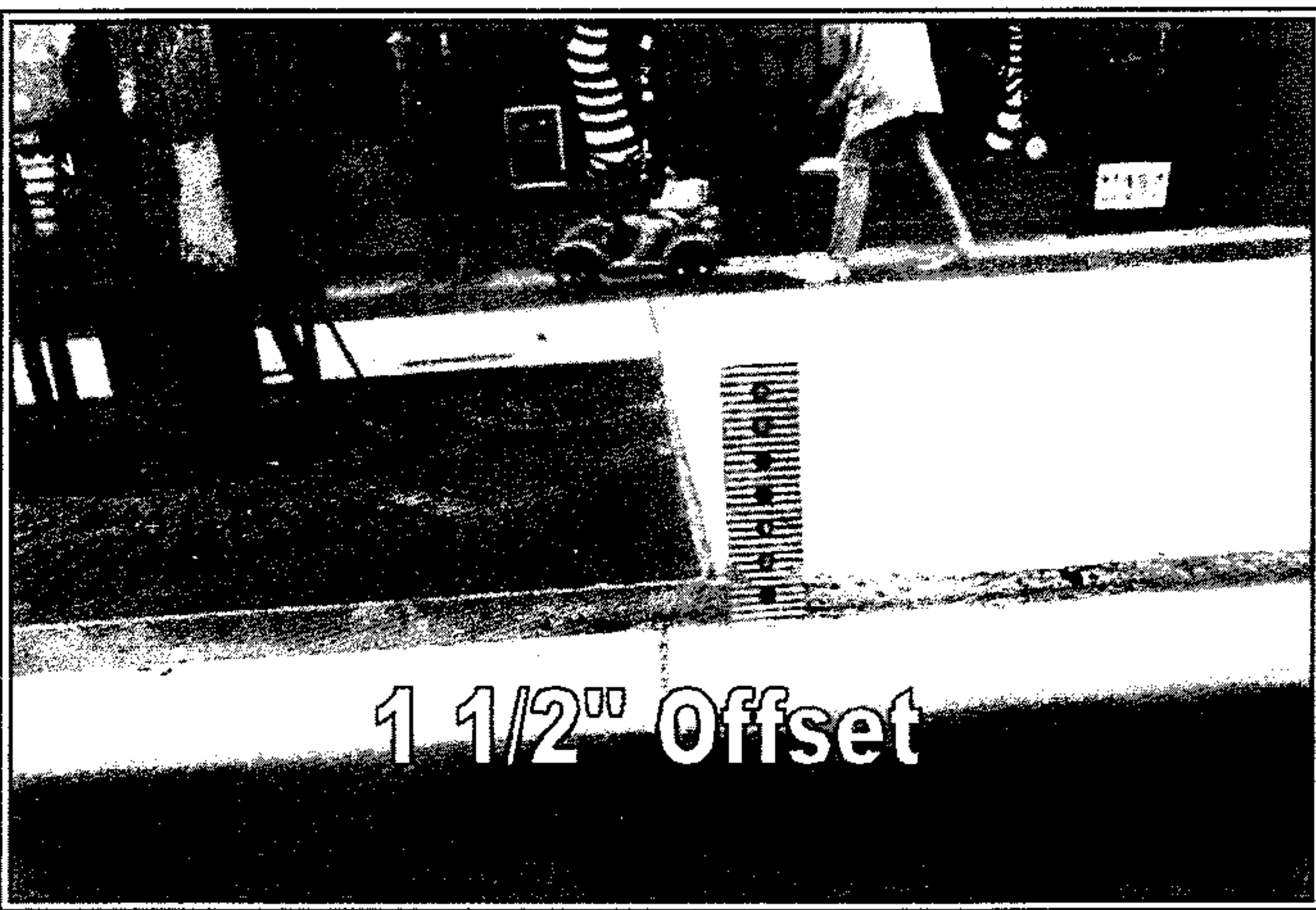
5100 E 2nd St



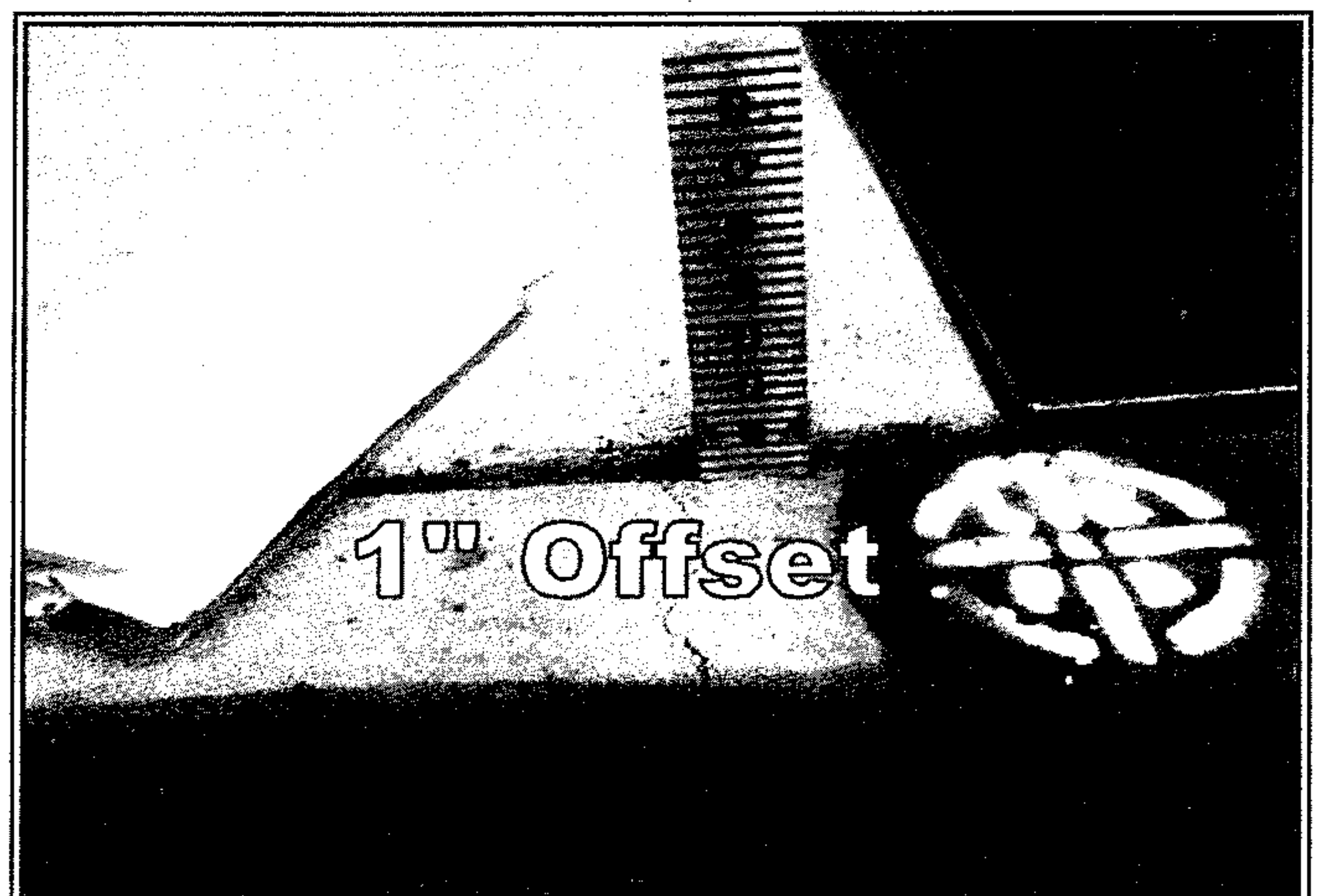
5128 E 2nd St



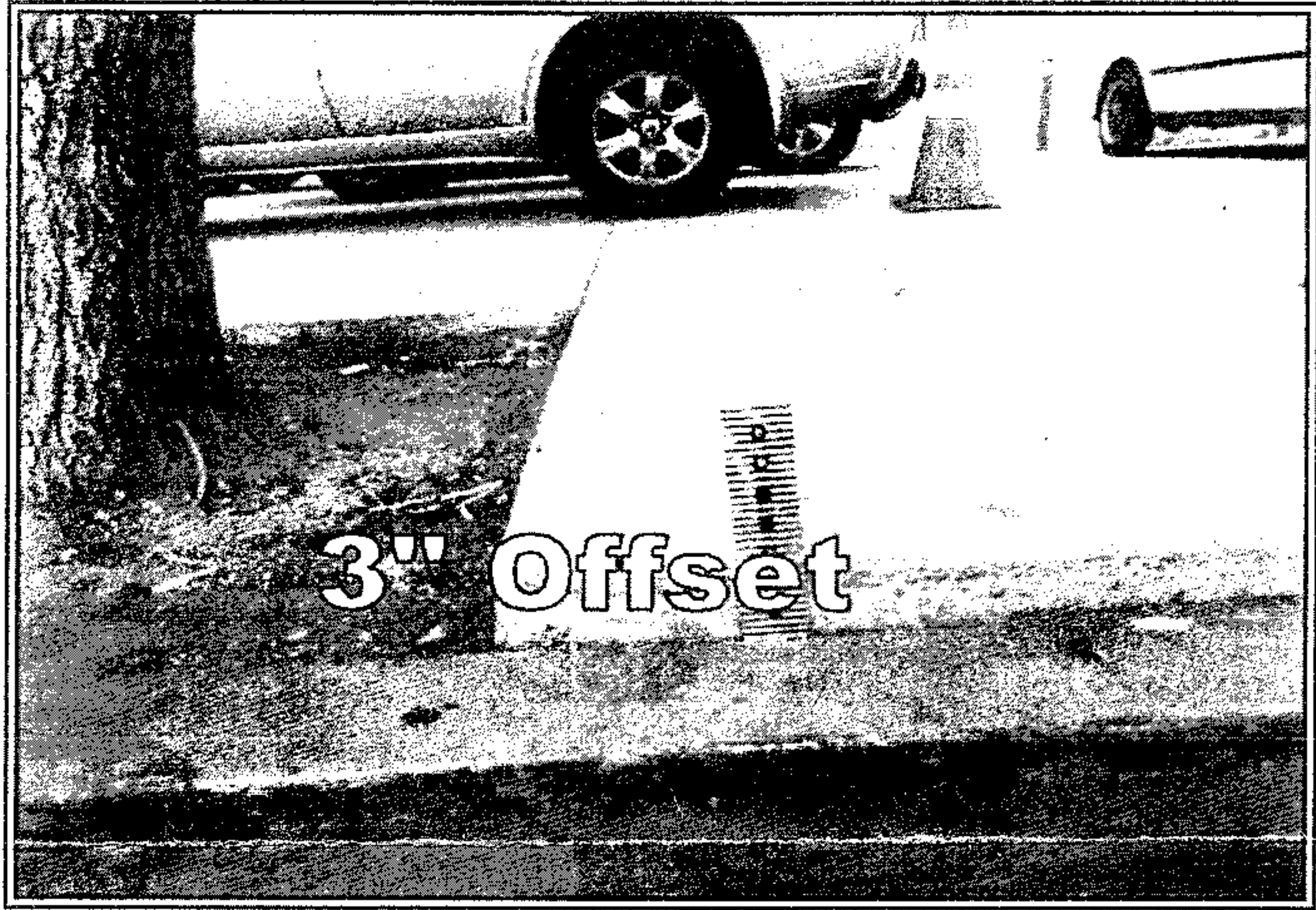
5239 E 2nd St



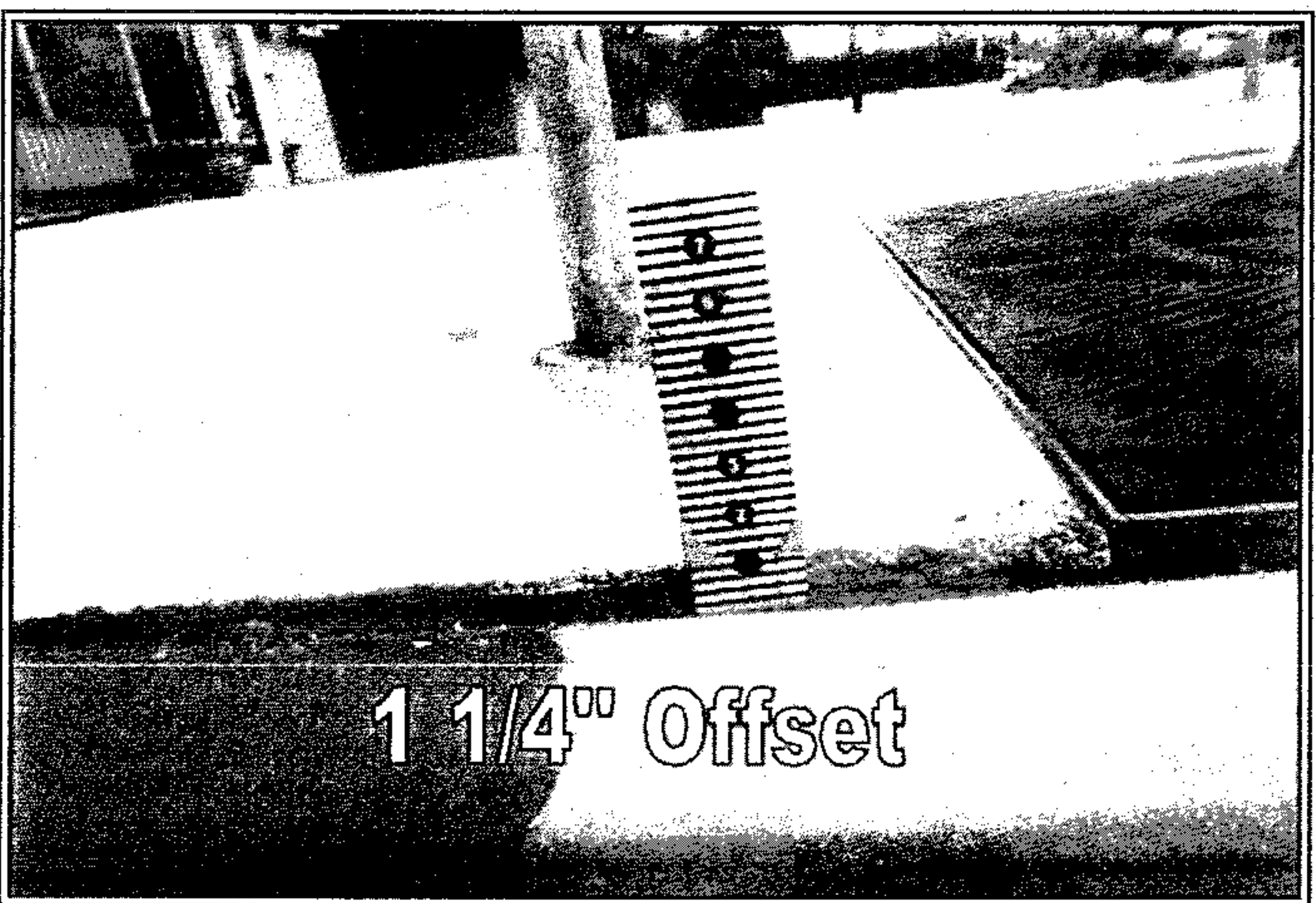
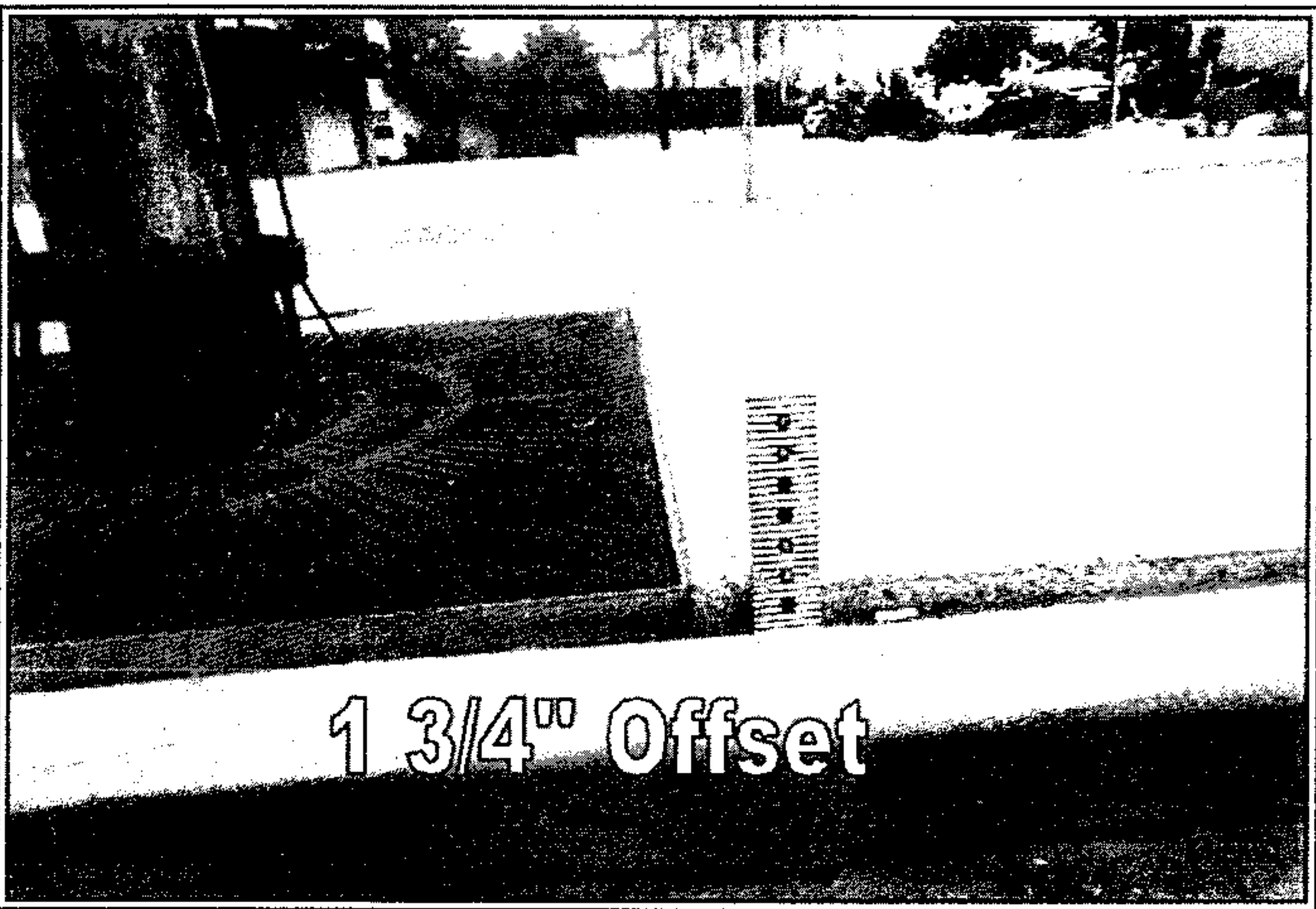
5265 E 2nd St



5296 E 2nd St
Glendora Ave Side



5313 E 2nd St



5374 E 2nd St

