

Stage 1:

Maintenance and Repair:

1) Repair “shadows”

- a) Where the parking meter has been replaced and reset with new concrete the missing area of the “shadow” needs to be stained/painted to complete/recreate the original artwork (work to be completed by the artist).



- b) Where the “shadow” has been damaged due to physical and/or chemical damage. There is one instance where a “shadow” has been both cut into and then filled with a concrete patch and also subjected to chemical damage intended to clean the sidewalk. The shadow is located directly outside of a restaurant where the sidewalk needs to be cleaned more often than any of the other “shadows” are located. (sidewalk replacement completed by usual contractor and “shadow” completed by the artist)

This repair requires that the sidewalk in front of the restaurant and in front of another meter on the block be replaced with new concrete. The “shadow” would then be recreated at the next parking meter on the block. This relocation of the image would assure that the new “shadow” would not be subjected to the excessive cleaning requirements of the restaurant.



- c) The vast majority of the “shadows” are in very good condition and the long-term maintenance plan should be to replace/recreate “shadows” as the need arises. The two bus pads however should be cleaned to reveal the shadows obscured by oil stains.

**Pictographs Maintenance Repaint and Refresh**



After over a decade of weathering and erosion, many of the pictographs need to be repainted / refreshed.

This will require repainting the pictographs and refreshing the abalone inlays. Abalone inlay would be polished and replaced or repaired if any are damaged.

(Work to be completed by the artist)

**Greatest Priority: Repainting of Vertical “Shadows” on Sweet Jill’s and The Grunion Gazette.**

There are four Vertical Shadows located on the Library, the Gazette building, The Police Museum, and Sweet Jill’s. The condition of these “shadows” is directly related to the condition of the paint on the building on which they are painted. The two “shadows” in the greatest need of repair are located on Sweet Jill’s and the Grunion Gazette Building. The condition of the Library was very bad and has been repainted. (See images below for a comparison of the Library before and after the “shadows” were repainted.



Images above show library and artwork before repainting. -- Images below show library and artwork after repainting.



The process to repaint these “shadows” require that the artist make a template of the existing “shadow” prior to having the building painted and once the building is

repainted, the artist would then repaint the “shadow”. In the case of the Police Museum this area is in the best condition as the artist striped, sealed, and painted the wall as well as the “shadow” while the other “vertical shadows were painted on existing paint.



Original “shadow” matches wall color



New wall colors do not match “shadow”



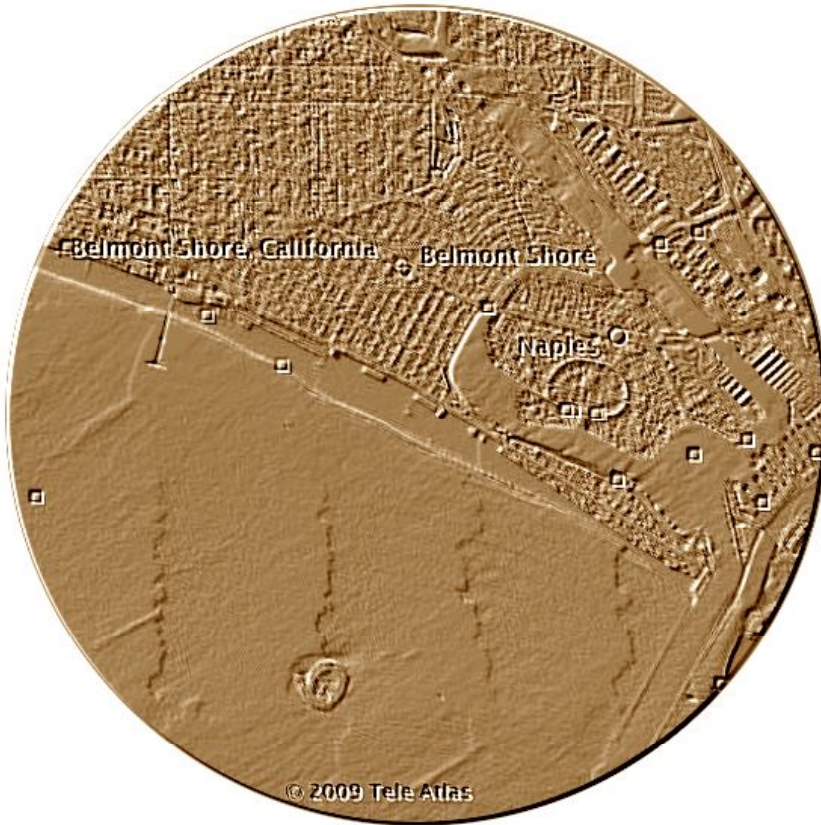
Building needs new paint as well as new “shadow”



A few years ago there was a proposal to tear down the wall on the Police Museum where the “shadow” is located and to restore the old doorway. If this were to be funded, the artist would work with the architect to recreate the image of the heron “shadow” on the new doorway. If this doorway will not be restored in the next two years, it is recommended that the “shadow” be repainted within a year.

# MANHOLE COVERS

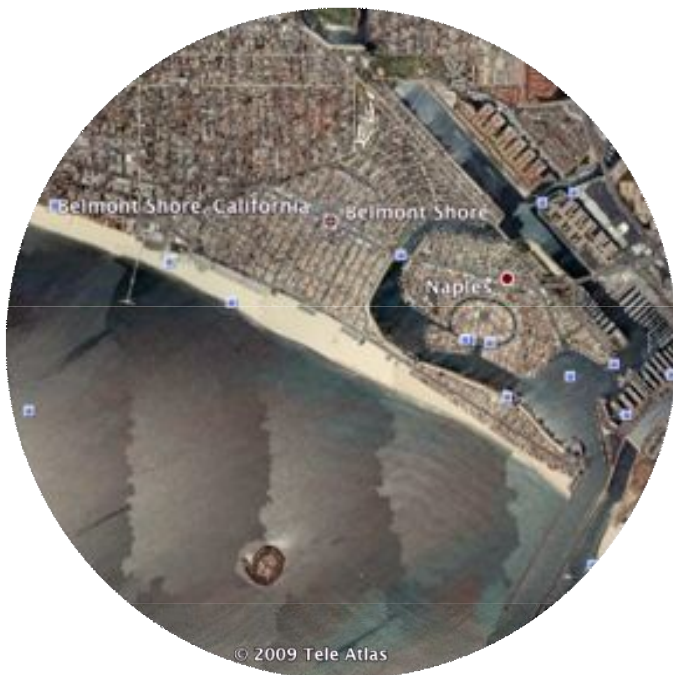
## Artist Designed Manhole Covers



The manhole covers in their current condition are unattractive and are a permanent part of the streetscape /identity of Belmont Shore.



The opportunity here is to create decorative manhole covers that are specific to Belmont Shore.



Common in many foreign countries and in urban centers in the United States, the manhole covers illustrated here were created to reinforce the unique character of a specific area, city, district or town. The concept illustrated above is a manhole cover based on a map of the Belmont Shore area.

### CSULB Public Art Course

This project could be designed by the Artist's or could be developed in conjunction with the public art course at CSULB taught by Jorge Pardo and Craig Cree Stone.

## Painting Electrical Boxes

These things are ugly and will not go away. Artists have painted electrical boxes in other areas of Long Beach to beautify these eyesores and to create a sense of place. Designs that reinforce the sense of place of Second Street could be tiled or painted on these to enhance the visitor's experience of Second Street.



## Utility Box Painted or Covered with Photographic Tile



Based on Band Pavillion of Old Pike

## SITE SPECIFIC STREET FURNITURE

Street furniture rather than being uniform throughout Second Street could be site-specific. An example of this approach would be to replace the benches outside of the Bay Shore Library with benches and tables created from casting books in concrete. Ceramic tiles that reveal the history of Belmont Shore can also be inset into these concrete sculptures of books as seen in the photos below. Business names, donors or titles of books from Belmont Shore can be sandblasted into the spine of these books. Business names, donors or titles of books from Belmont Shore can be sandblasted into the spine of these books.



Image of existing benches above



Images of sculptures of books with tile images inset into book cover



SITE SPECIFIC STREET FURNITURE



Waste Container with Mosaics on Sides



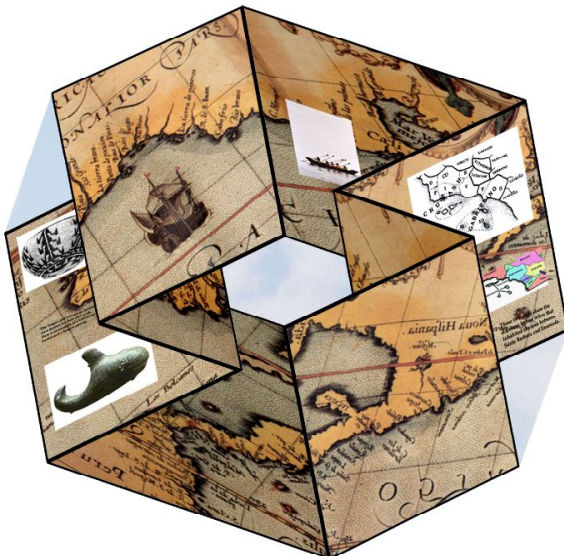
Possible site for site-specific street furniture



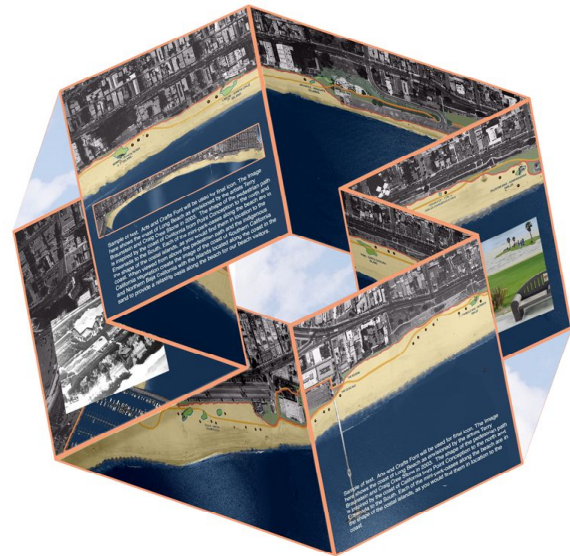
**Mosaic Bench**  
Standard Bench with Insets for Mosaic

## Way-finding, Encouraged Behaviors and Belmont Shore History Signage.

This approach is to utilize the area behind street existing signage to tell the story of Belmont Shore, direct visitors to points of interest and to reinforce positive behaviors on Second Street.



NATIVE AMERICAN EDUCATIONAL ICON



EXPLANATION OF ART MASTER PLAN ICON

Examples of Way- Finding, Prohibited Activity and Educational Signage Designed by the Artists.

## Gateway Treatments: Example of Gateway Designed by Artist Terry Braunstein



**Entryway Sculpture for Westside, Long Beach**

### **Terrazzo Entrances:**

Create terrazzo areas near the entrances to historic sites in Belmont Shore.

### **Bay Seating Eating Area:**

Create elements for seating and eating in open areas along Second Street.

### **Curb Paint, Newsstand Paint and Anti-graffiti Coatings**

Curbs and Newsstands should be repainted where needed. Anti-graffiti Coatings should be applied to all existing street furniture.