



Planning Commission

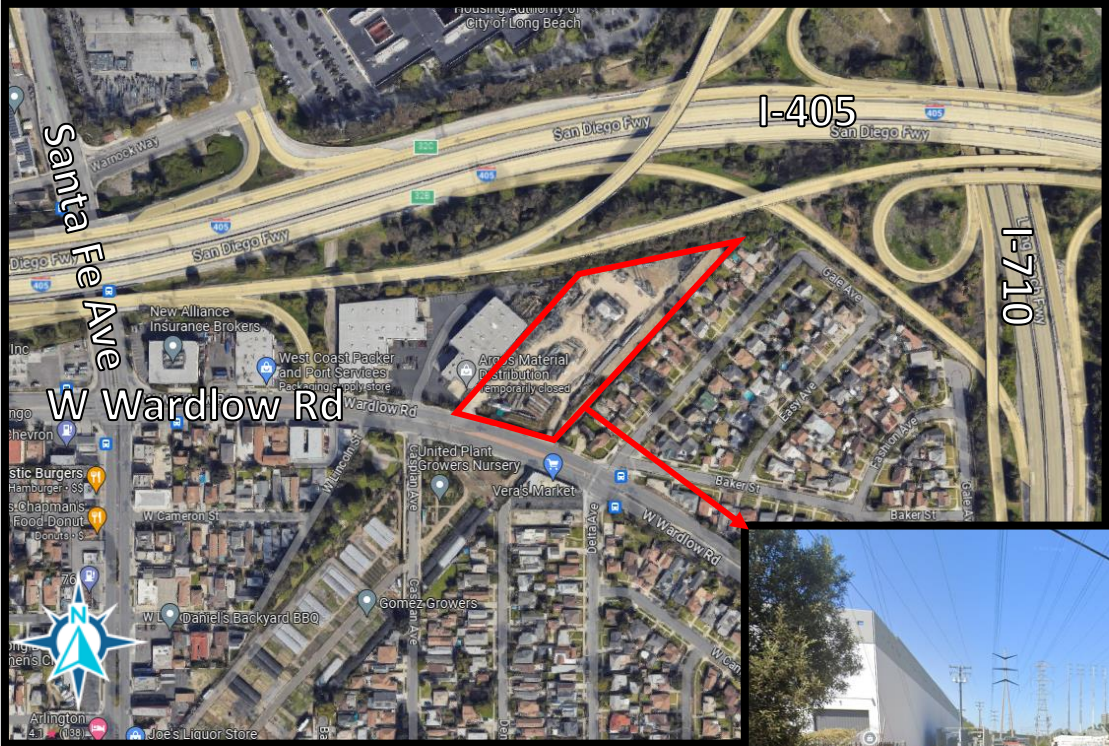
September 21, 2023

1401 ½ West Wardlow Road (APN: 7311-001-802)

Wireless Telecommunications Facility

Application No. 2306-08 (CUP23-016)

1401 1/2 W Wardlow Rd



Scope of Work:

Installation of:

- Three (3) antennas
- Six (6) RRU's
- One (1) equipment cabinet
- One (1) GPS Antenna
- One (1) H-frame for associated supportive equipment behind CMU Block wall.



Looking Northeast along Wardlow Rd

Zone: IL

PlaceType: OS

Council District: 7

Current Use: Edison High-Tension Tower (134-feet) at a storage facility.

Proposal:

New Wireless Telecommunications Facility for Dish Wireless

Surrounding Uses:

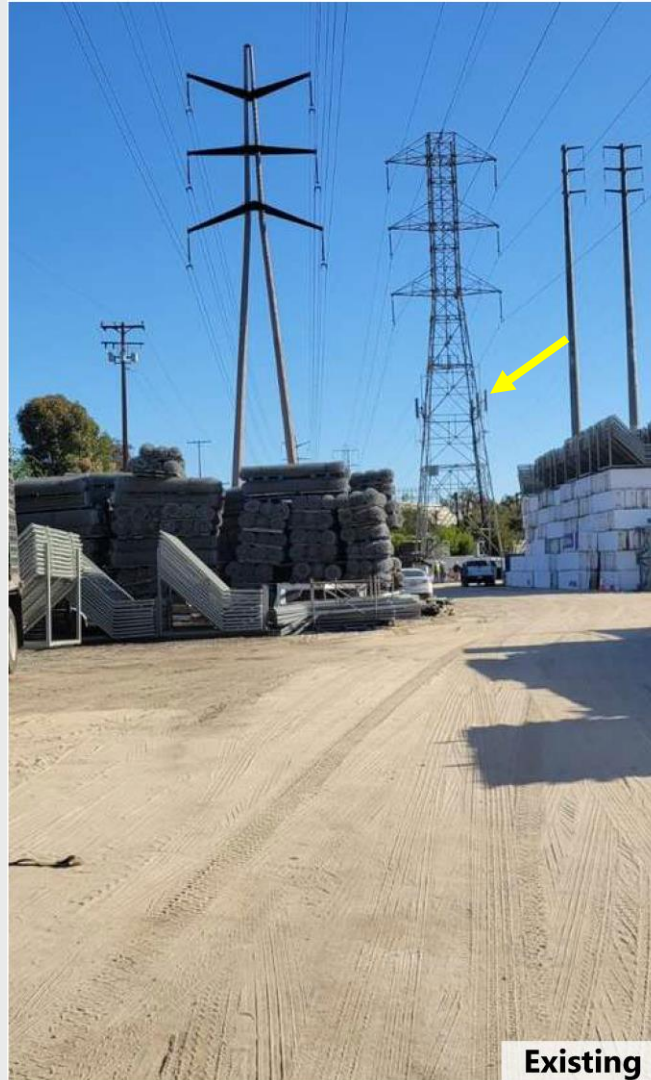
Direction	Uses
North	Industrial
East	Residential
South	Industrial, Commercial
West	Commercial, Residential

1401 ½ W Wardlow Rd



1401 ½ W Wardlow Rd (Photosimulation 1)

DISH LALAX04263C

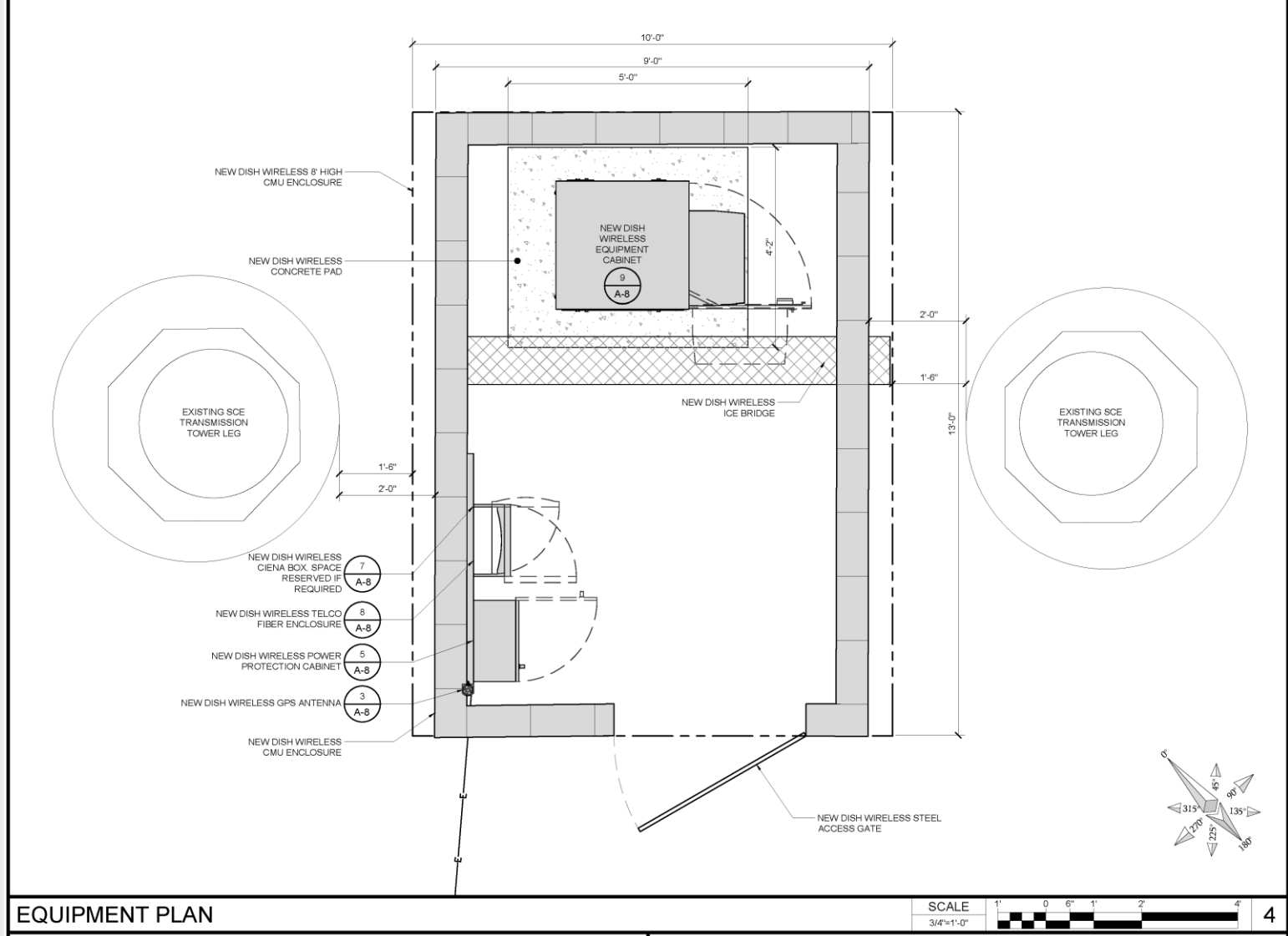
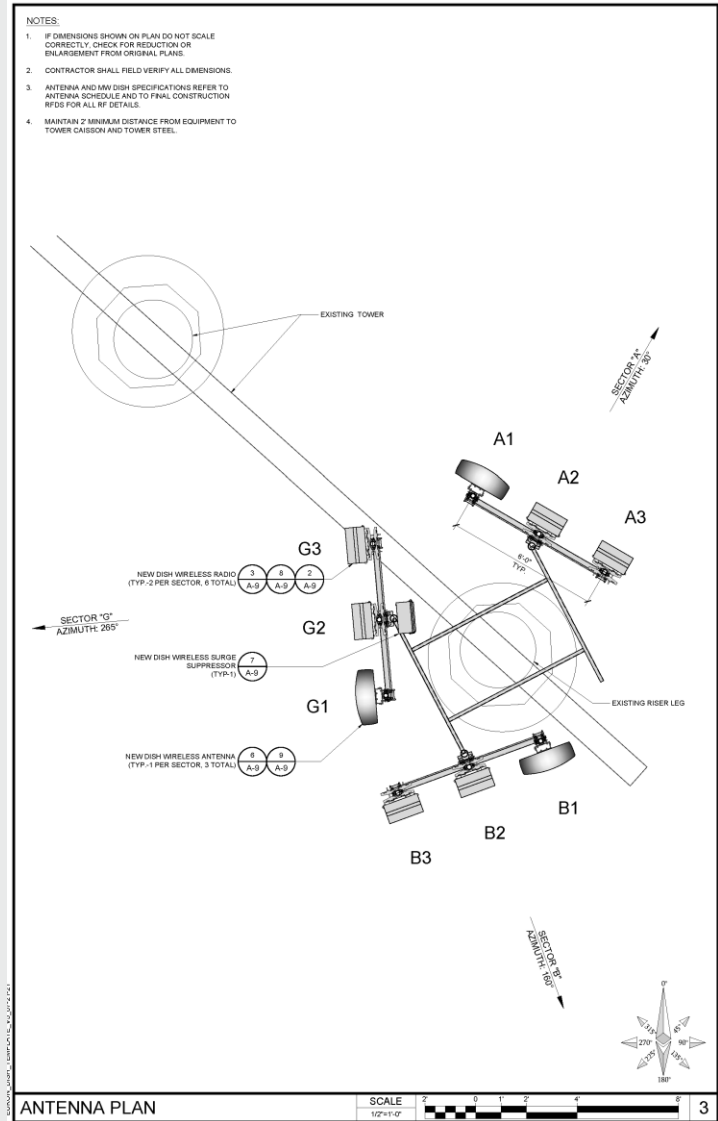


Existing



Photosimulation

1401 1/2 W Wardlow Rd (Site Plan)



Findings

1. **General Plan consistency** – Land Use Element Policy 3-1 acknowledges the need for telecommunications as part of the matrix that encapsulates a forward-advancing city.
2. **Detrimental effects** – Use is required to comply with Federal Communications Commission (FCC) standards, and the United States standards for emissions set by the American National Standards Institute (ANSI).
3. **Community compatibility** – Proposed unscreened design would be least obtrusive design. The facility will have reduced visibility from the street and adjacent properties at proposed height. Proposing a new free-standing structure would result in a more obtrusive design. Conditions added requiring a maximum projection from the tower legs, and maximum horizontal spacing.

FCC Emissions Compliance

1. **Exposure limits from EME Study** – Occupational/Controlled limits would be well under the FCC mandated limit at close range of antennas. Would be even less for the general public limit at street level also for adjacent properties.
2. **Required Compliance Signage** – Signage is required at base of structure and near antennas informing that equipment is transmitting

FCC Telecommunications Act of 1996

“No State or local government or instrumentality thereof may regulate the placement, construction, and modification of personal wireless service facilities on the basis of the environmental effects of radio frequency emissions to the extent that such facilities comply with the Commission's regulations concerning such emissions”

Special Conditions

- 1. Tower-mounted antennas and equipment limited to 58-feet in height**
- 2. Maximum 6-foot projection of array from any tower leg**
- 3. Array size limited to a maximum horizontal size of 16-feet**

Recommendation

Accept Categorical Exemption CE23-106 and approve a Conditional Use Permit (CUP23-016; TEL23-016) to allow the installation of a new wireless telecommunication facility mounted on an existing high-tension electrical tower, with ground-mounted supportive equipment, subject to conditions of approval.



Thank you

Miguel Samayoa
Miguel.Samayoa@longbeach.gov