

Airport Advisory Commission

Bob Luskin
Chair

Phyllis Ortman
Vice Chair

Bruce Alton

Elizabeth Cruz

Hal Gosling

Gerald Mineghino

Roland B. Scott, Jr.

Karen Sherman

Carol Soccio



Airport Management

Mario Rodriguez
Airport Director

Claudia Lewis
Administrative Officer

Juan López-Rios
Leasing & Development Officer

Sharon Diggs-Jackson
Public Affairs Officer

Nancy Trent
Facilities Management Officer

Fred Peña
Superintendent of Airside Operations

Mario Fabila
Superintendent of Noise Compliance

Lt. John Blood
Acting Superintendent of Security

Chris Kunze
Special Airport Advisor



Long Beach Airport Monthly Noise Updates July 2010

COMMERCIAL LATE NIGHT ACTIVITY

Current Month & Year-To-Date Statistics (10 pm—7 am)

July 2010

July				CY-T-D 2009		
	2010	2009	%Change	2010	2009	%Change
Air Carrier & Commuter Operations	2,575	2,657	-3.1%	16,782	17,759	-5.5%
10pm - 11pm Operations						
Alaska Airlines / Horizon Air	0	1		0	15	
Delta Air Lines / SkyWest Airlines	1	0		1	5	
FedEx	0	0		0	0	
Frontier Airlines	0	0		0	0	
JetBlue Airways	33	14		216	146	
UPS	2	1		3	2	
US Airways	1	0		5	5	
Total	37	16	131.3%	225	173	30.1%
11pm - 7am Operations	2010	2009	%Change	2010	2009	%Change
Alaska Airlines / Horizon Air	0	0		0	1	
Delta Air Lines / SkyWest Airlines	0	0		0	0	
FedEx	0	0		0	0	
Frontier	1	0		1	0	
JetBlue Airways	16	7		64	33	
UPS	1	0		1	0	
US Airways	0	3		1	25	
Total	18	10	80.0%	67	59	13.6%
10 pm - 7 am Grand Total	55	26	111.5%	292	232	25.9%

- 2.1% (55 of 2,575) of total commercial operations occurred between 10 pm—7 am.
- 1.8 flights—Nightly average for all late night commercial flights, includes unanticipated delays.
- 0.6 flights— Nightly average for commercial flights after 11 pm.

AIRCRAFT NOISE VIOLATIONS

Current Month and CY-T-D Statistics for Long Beach Airport July 2010

July 2010				CY-T-D 2010		
Air Carrier Violations	2010	2009	% Change	2010	2009	% Change
Alaska Airlines / Horizon Air	0	0		0	1	
FedEx	0	0		0	0	
Frontier Airlines	1	0		1	0	
JetBlue Airways	18	6		96	32	
UPS	1	0		5	1	
US Airways	0	0		1	3	
Total	20	6	233.3%	103	37	178.4%
Commuter Violations	2010	2009	% Change	2010	2009	% Change
Alaska Airlines / Horizon Air	0	0		0	0	
Delta Air Lines / SkyWest Airlines	0	0		0	0	
US Airways	0	0		0	0	
Total	0	0		0	0	
Non-Commercial Violations	2010	2009	% Change	2010	2009	% Change
All GA, Charter & Other	20	40		104	169	
Total Noise Violations	40	46	-13.0%	207	206	0.5%
Monetary Fines	2010	2009	% Change	2010	2009	% Change
Airport Monetary Fines Issued	\$2,100	\$1,300		\$16,800	\$10,600	
Consent Decree Fines Issued	\$66,000	\$15,000		\$294,000	\$123,000	
Total Monetary Fines Issued	\$68,100	\$16,300		\$310,800	\$133,600	
Airport Operations (FAA)	2010	2009	% Change	2010	2009	% Change
Air Carrier + Commuter Carriers	2,575	2,657	-3.1%	16,782	17,759	-5.5%
Air Taxi + General Aviation	26,444	26,144	1.1%	170,690	154,314	10.6%
Military Operations	53	46	15.2%	538	435	23.7%
Total Aircraft Operations	29,072	28,847	0.8%	188,010	172,508	9.0%

0.1% (40 of 29,072) of the Airport's total aircraft operations (Commercial & GA) resulted in a noise violation.

0.8% (20 of 2,575) of Airport's Commercial Operations (Commercial & Commuter) resulted in a noise violation.

** Note: 40% (38 of 96) of JetBlue's violations for YTD 2010 can be attributed to activity between 10 p.m.—11 p.m. This activity did not meet the criteria for Unanticipated Delay, and therefore a LBMC 16.43 violation of \$300 was issued for each occurrence.

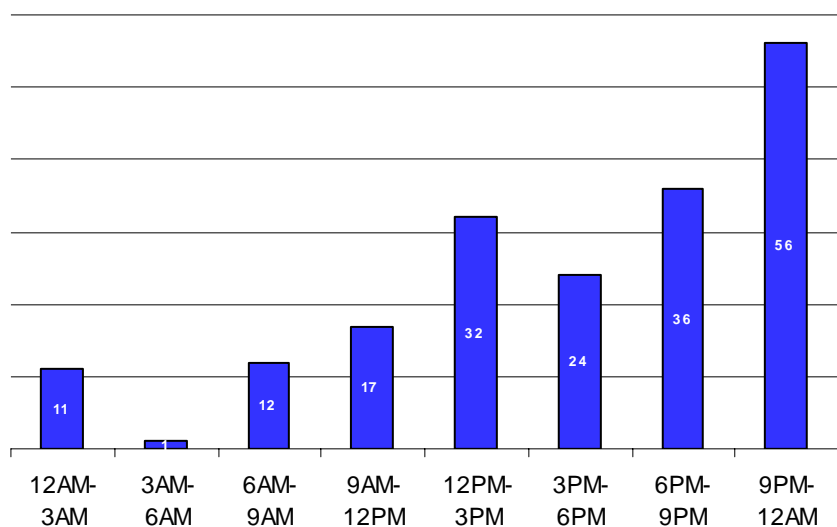
Three noise testing flights of a B727 on July 20, exceeded our SENEL. These flights are exempt from noise violations per Noise Compatibility Ordinance 16.43.070 General Exemptions Subsection E.

Definitions:

GA — General Aviation

NOISE COMPLAINTS

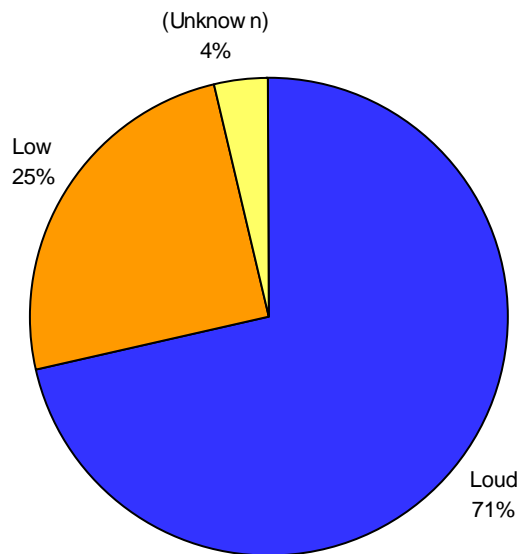
Complaints per Hour



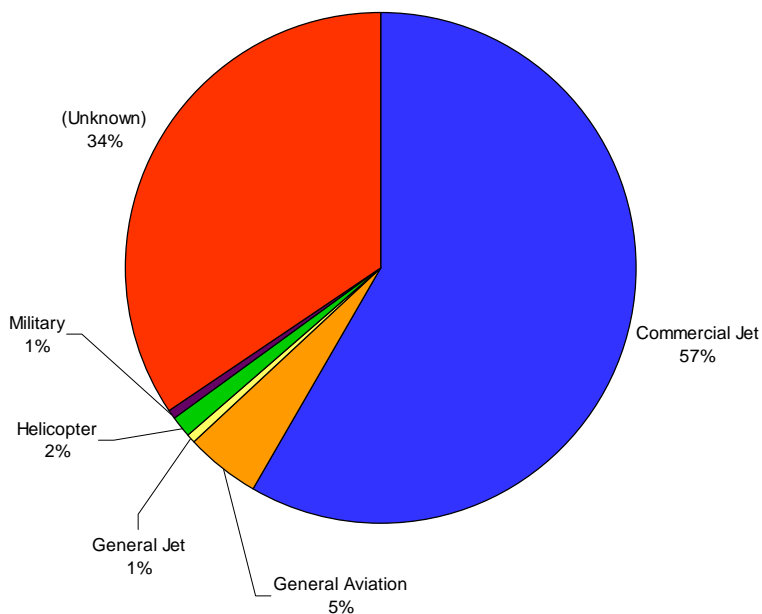
Complaints By Zip Code

90712	1
90720	1
90740	1
90805	41
90807	55
90808	4
90815	2
92626	31
29647	16
92648	9
92649	8
Zip Code Unknown	20
Total	189

Complaints by Type of Concern



Complaints by Type of Aircraft



NOISE VIOLATIONS

OWNER NAME	DATE	TIME	A/D	RWY	A/C TYPE	RMTID	SEL	LIMIT	STATUS
Hum-Air LLC	7/1/2010	12:42:49 AM	A	30	GLF5	10	87.1	79.0	VIOLATION
Private	7/6/2010	11:42:25 PM	D	30	GLF5	9	86.3	79.0	VIOLATION
Wells Fargo Bank Northwest National	7/7/2010	6:46:50 AM	A	30	GLF4	10	92.1	79.0	VIOLATION
Polet Cargo Airlines	7/7/2010	2:35:06 PM	D	12	A124	10	110.2	101.5	VIOLATION
Frontier Airlines	7/8/2010	6:52:03 AM	D	30	E190	9	92.9	90.0	VIOLATION
JetBlue Airways Corporation	7/8/2010	10:16:41 PM	D	30	A320	9	94.7	90.0	VIOLATION
JetSuite Air	7/8/2010	11:31:09 PM	A	30	E50P	10	82.7	79.0	VIOLATION
JetBlue Airways Corporation	7/9/2010	11:10:46 PM	A	30	A320	10	93.0	79.0	VIO & ALT ENF
Entrepreneurial Asset Management	7/9/2010	11:24:41 PM	A	30	GLF3	10	95.0	79.0	VIOLATION
N4171Q LLC	7/11/2010	8:24:58 AM	D	25R	C340	6	95.0	92.0	VIOLATION
JetBlue Airways Corporation	7/11/2010	10:21:35 PM	D	30	A320	9	94.1	90.0	VIOLATION
Scotts Co LLC	7/12/2010	10:36:48 PM	D	30	F900	9	96.1	90.0	VIOLATION
JetBlue Airways Corporation	7/13/2010	10:09:20 PM	D	30	A320	9	93.4	90.0	VIOLATION
JetBlue Airways Corporation	7/13/2010	11:06:02 PM	A	30	A320	10	92.4	79.0	VIO & ALT ENF
JetBlue Airways Corporation	7/13/2010	11:08:39 PM	D	12	A320	10	96.2	79.0	VIO & ALT ENF
JetBlue Airways Corporation	7/14/2010	12:12:42 AM	D	12	A320	10	95.8	79.0	VIO & ALT ENF
JetBlue Airways Corporation	7/14/2010	1:28:47 AM	A	30	A320	10	92.3	79.0	VIO & ALT ENF
United Parcel Service	7/15/2010	12:06:26 AM	D	30	B763	9	94.3	79.0	VIOLATION
Avantair Inc.	7/16/2010	1:56:46 PM	A	25L	P180	2	95.3	93.0	VIOLATION
Private	7/17/2010	11:32:22 AM	D	30	GLF2	9	105.0	102.5	VIOLATION
AMF1 LLC	7/19/2010	11:11:53 PM	A	30	BE40	10	86.8	79.0	VIOLATION
JetBlue Airways Corporation	7/19/2010	11:17:48 PM	D	30	A320	9	94.9	79.0	VIO & ALT ENF
JetBlue Airways Corporation	7/20/2010	12:05:16 AM	A	30	A320	10	93.2	79.0	VIO & ALT ENF
Private	7/20/2010	4:42:53 AM	D	30	DA40	9	83.6	79.0	VIOLATION
Talon Air, Inc	7/22/2010	12:13:39 AM	A	30	H25B	10	92.7	79.0	VIOLATION
Socal Spine & Orthopedic	7/22/2010	5:24:27 AM	D	30	COL4	9	82.7	79.0	VIOLATION
JetBlue Airways Corporation	7/22/2010	11:45:00 PM	A	30	A320	10	93.2	79.0	VIO & ALT ENF
Long Charter Air LLC	7/23/2010	2:52:17 PM	D	30	GLF2	9	107.7	102.5	VIOLATION
Lidija LLC	7/24/2010	2:07:49 AM	A	30	DA42	10	82.2	79.0	VIOLATION
Private	7/24/2010	3:53:11 AM	A	30	BE35	10	83.6	79.0	VIOLATION
JetBlue Airways Corporation	7/25/2010	10:15:45 PM	D	30	A320	9	95.5	90.0	VIOLATION
JetBlue Airways Corporation	7/25/2010	11:50:29 PM	A	30	A320	10	93.7	79.0	VIO & ALT ENF
JetBlue Airways Corporation	7/26/2010	12:27:00 AM	A	30	A320	10	94.0	79.0	VIO & ALT ENF
JetBlue Airways Corporation	7/26/2010	12:58:14 AM	D	30	A320	9	94.4	79.0	VIO & ALT ENF
Private	7/28/2010	1:59:16 AM	A	30	HELI	10	85.5	79.0	VIOLATION
JetBlue Airways Corporation	7/29/2010	11:17:24 PM	A	30	A320	10	94.3	79.0	VIO & ALT ENF
Club Air, Inc.	7/30/2010	12:03:58 AM	A	30	C650	10	85.9	79.0	VIOLATION
JetBlue Airways Corporation	7/30/2010	11:05:31 PM	A	30	A320	10	92.7	79.0	VIO & ALT ENF
JetBlue Airways Corporation	7/31/2010	12:05:02 AM	A	30	A320	10	93.0	79.0	VIO & ALT ENF
Private	7/31/2010	2:48:32 PM	D	25L	AC56	5	100.4	95.0	VIOLATION



Long Beach Airport

4100 Donald Douglas Drive, Long Beach, CA 90808

www.lgb.org • lgbapt@longbeach.gov

Administration • (562) 570-2600

Public Affairs & Noise Abatement • (562) 570-2678

24-Hour Security • (562) 570-2640