



On-Call Engineering Services for Sanitary Sewer Rehabilitation and Replacement Program Project 11

September 28, 2023

Program Overview

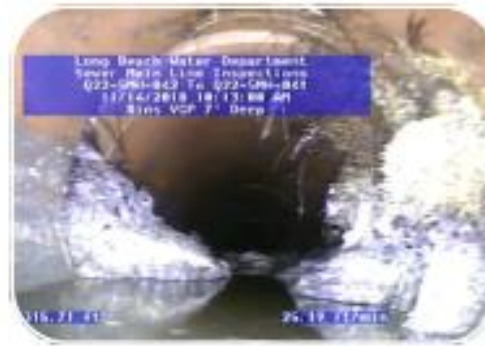
- Condition assessment performed by Sewer Operations using National Association of Sewer Service Companies scoring system
- Capital Improvement Program projects developed by Engineering
- Over 20,000 feet of sewer pipeline improvements completed annually



Broken @ 15.0'



Tap Factory
Defective @ 188.7'

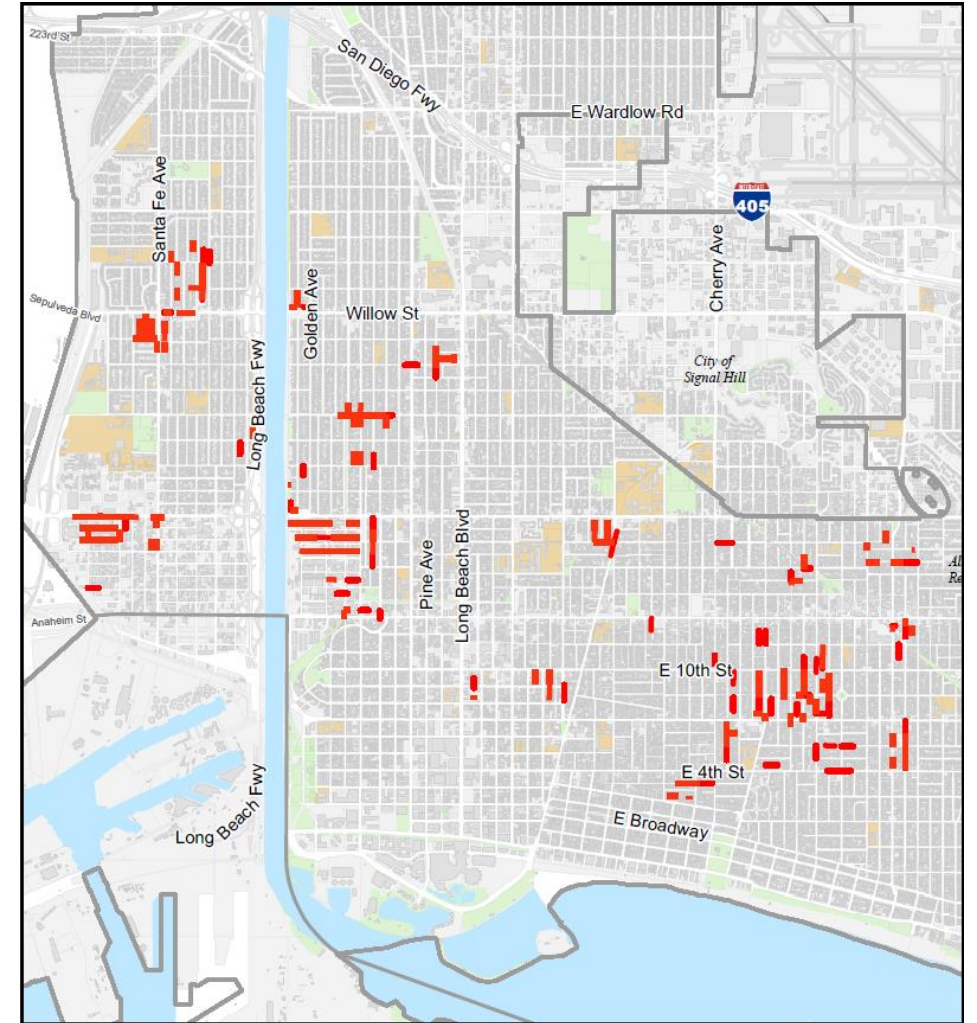


Roots @ 315.8'



SSRRP-11 Design Scope

- Project Duration: 12 Months
- Assessment of approx. 55,000 feet of sewer pipeline
- Project Limits
 - Northerly bounds – W Spring St
 - Westerly bounds – Santa Fe Ave & 710 Fwy
 - Southerly bounds – E 4th St
 - Easterly bounds – Loma Ave
- Assess CCTV surveys, design and develop complete construction contract document for public bidding



— SSRRP-11 Identified Sewer Mains

Recommendation

Authorize the General Manager to issue Task Order No. 02-2023 under On-Call Professional Engineering Contract to Black & Veatch Corporation for the Sanitary Sewer Rehabilitation and Replacement Program Project 11 in the amount not to exceed \$432,174.



LONG BEACH
Utilities
Water · Gas · Sewer