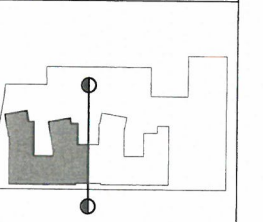


PROJECT: ANCHOR PLACE
CVC PHASE V PARCEL 13 & 14
2000 RIVER AVE
LONG BEACH, CA 90810

OWNER:
Century Villages at Cabrillo
1000 CORPORATE POINTE
CLIVER CITY, CA 90230
(7) 310.642.2059 (F) 310.258.0701

STAMP:
SITE PLAN APPLICATION
SUBMITTAL
12/30/2014
NOT FOR CONSTRUCTION

ISSUE NO.	DOCUMENT PACKAGE	ISSUE DATE



PROJECT NO. 14003
PLOT DATE 12-30-14
SCALE AS SHOWN

SHEET TITLE
FIFTH FLOOR PLAN
PART A
SHEET NO.
A1.50
CAD REF.

UNIT MIX BY FLOOR

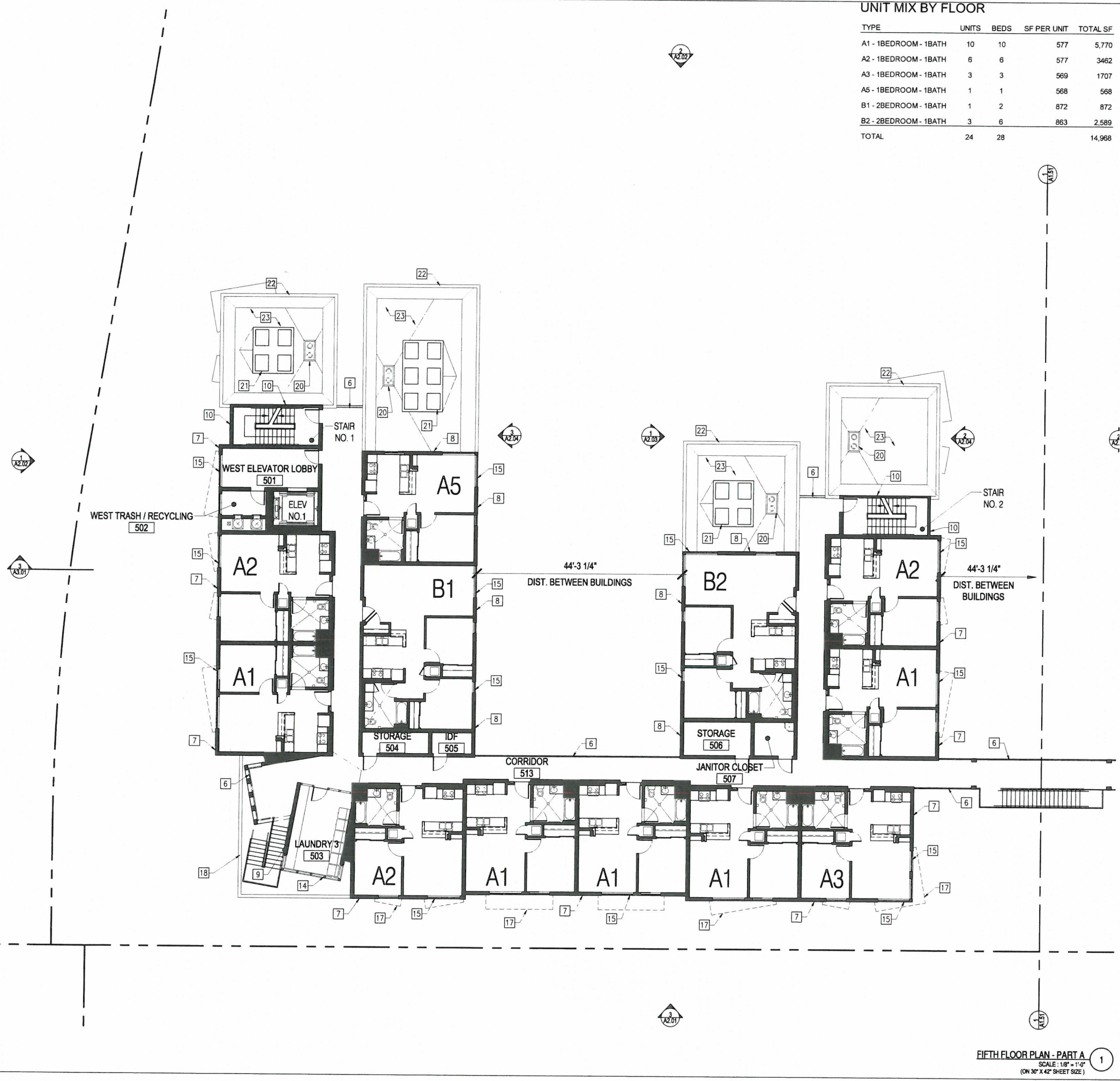
TYPE	UNITS	BEDS	SF PER UNIT	TOTAL SF
A1 - 1BEDROOM - 1BATH	10	10	577	5,770
A2 - 1BEDROOM - 1BATH	6	6	577	3,462
A3 - 1BEDROOM - 1BATH	3	3	569	1,707
A5 - 1BEDROOM - 1BATH	1	1	568	568
B1 - 2BEDROOM - 1BATH	1	2	872	872
B2 - 2BEDROOM - 1BATH	3	6	863	2,589
TOTAL	24	28		14,968

- ### KEYNOTES
- 1 MASONRY, CMU-1
 - 2 MASONRY LINTEL, CMU-2
 - 3 MASONRY BASE, CMU-2
 - 4 MASONRY CAP, CMU-2
 - 5 WROUGHT IRON GARAGE GRILL, PT-5, TYP.
 - 6 WROUGHT IRON GUARDRAIL W/ PICKETS, PT-5, TYP.
 - 7 20/30 SAND STUCCO FINISH, PT-1, TYP.
 - 8 20/30 SAND STUCCO FINISH, PT-2, TYP.
 - 9 CEMENT BOARD LAP SIDING, PT-3
 - 10 CEMENT BOARD LAP SIDING, PT-4
 - 11 GARAGE ENTRY CALL BOX
 - 12 WROUGHT IRON GARAGE GATE, PT-5, TYP.
 - 13 METAL ROLL-UP DOOR, PT-5
 - 14 ALUMINUM STOREFRONT GLAZING, BRONZE ANODIZED, CLEAR GLASS, TYP.
 - 15 RECESSED VINYL WINDOW, MILGARD BRONZE AND CLEAR GLASS, TYP.
 - 16 STEEL TROWEL SMOOTH STUCCO FINISH, PT-4
 - 17 METAL AWNING, PT-5
 - 18 METAL COPING, PT-1
 - 19 METAL COPING, PT-5
 - 20 ROOF DRAIN, TYP.
 - 21 MECHANICAL EQUIPMENT, TYP.
 - 22 5' TALL PARAPET / EQUIPMENT SCREEN, REFER TO ELEVATION FOR MATERIAL
 - 23 FLAT ROOF, TYP.
 - 24 ROOF DECK

FINISH SCHEDULE

- PT-1 DUNN EDWARDS, DE2763 "OATMEAL COOKIE"
- PT-2 DUNN EDWARDS, DE5382 "GOLDEN APPEAL"
- PT-3 DUNN EDWARDS, DE5495 "GRAPE LEAVES"
- PT-4 DUNN EDWARDS, DE6222 "WEATHER BOARD"
- PT-5 DUNN EDWARDS, DE6231 "SHAKER GRAY"
- CMU-1 ANGELUS BLOCK CO. "CHARCOAL" BURNISHED
- CMU-2 ANGELUS BLOCK CO. "MIDNIGHT" BURNISHED

FIFTH FLOOR PLAN - PART A
SCALE: 1/8" = 1'-0"
(ON 30" X 42" SHEET SIZE)



UNIT MIX BY FLOOR

TYPE	UNITS	BEDS	SF PER UNIT	TOTAL SF
A1 - 1BEDROOM - 1BATH	10	10	577	5,770
A2 - 1BEDROOM - 1BATH	6	6	577	3462
A3 - 1BEDROOM - 1BATH	3	3	569	1707
A5 - 1BEDROOM - 1BATH	1	1	568	568
B1 - 2BEDROOM - 1BATH	1	2	872	872
B2 - 2BEDROOM - 1BATH	3	6	863	2,589
TOTAL	24	28		14,968

KEYNOTES

- [1] MASONRY, CMU-1
- [2] MASONRY LINTEL, CMU-2
- [3] MASONRY BASE, CMU-2
- [4] MASONRY CAP, CMU-2
- [5] WROUGHT IRON GARAGE GRILL, PT-5, TYP.
- [6] WROUGHT IRON GUARDRAIL W/ PICKETS, PT-5, TYP.
- [7] 20/30 SAND STUCCO FINISH, PT-1, TYP.
- [8] 20/30 SAND STUCCO FINISH, PT-2, TYP.
- [9] CEMENT BOARD LAP SIDING, PT-3
- [10] CEMENT BOARD LAP SIDING, PT-4
- [11] GARAGE ENTRY CALL BOX
- [12] WROUGHT IRON GARAGE GATE, PT-5, TYP.
- [13] METAL ROLL-UP DOOR, PT-5
- [14] ALUMINUM STOREFRONT GLAZING, BRONZE ANODIZED, CLEAR GLASS, TYP.
- [15] RECESSED VINYL WINDOW, MILGARD BRONZE AND CLEAR GLASS, TYP.
- [16] STEEL TROWEL SMOOTH STUCCO FINISH, PT-4
- [17] METAL AWNING, PT-5
- [18] METAL COPING, PT-1
- [19] METAL COPING, PT-5
- [20] ROOF DRAIN, TYP.
- [21] MECHANICAL EQUIPMENT, TYP.
- [22] 5' TALL PARAPET / EQUIPMENT SCREEN, REFER TO ELEVATION FOR MATERIAL
- [23] FLAT ROOF, TYP.
- [24] ROOF DECK



PSL ARCHITECTS
1657 Alhambra Street, Second Floor, Los Angeles, CA 90033
Tel. 323.954.9999 323.954.9997 Fax.

The design, drawings, and written materials in these documents of service are the sole property of PSL Architects. All design and related intellectual property shall be the property of PSL Architects and shall not be duplicated, disclosed, or used without the prior written consent of PSL Architects.

PROJECT:
ANCHOR PLACE
CVC PHASE V PARCEL 13 & 14

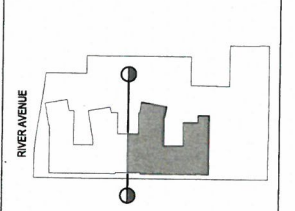
2000 RIVER AVE
LONG BEACH, CA 90810

OWNER:
Century Villages at Cabrillo
1000 CORPORATE POINTE
CULVER CITY, CA 90230
(T) 310.642.2059 (F) 310.258.0701

STAMP:
SITE PLAN APPLICATION
SUBMITTAL
12/30/2014
NOT FOR CONSTRUCTION

ISSUE NO.	DOCUMENT PACKAGE	ISSUE DATE

KEY PLAN



N	PROJECT NO.	14003
	PLOT DATE	12-30-14
	SCALE	AS SHOWN

FIFTH FLOOR PLAN PART B

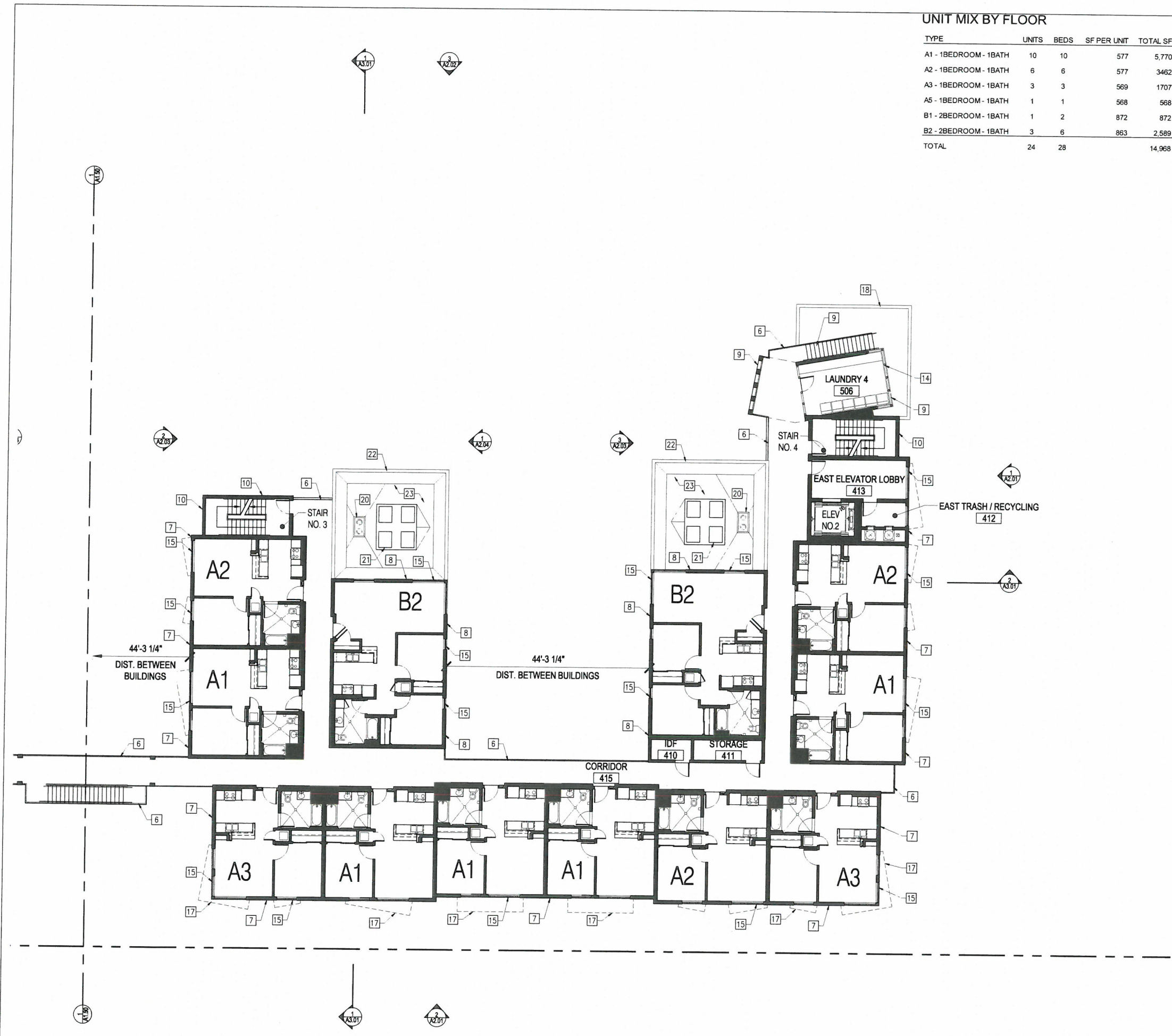
SHEET NO.
A1.51
CAD REF.

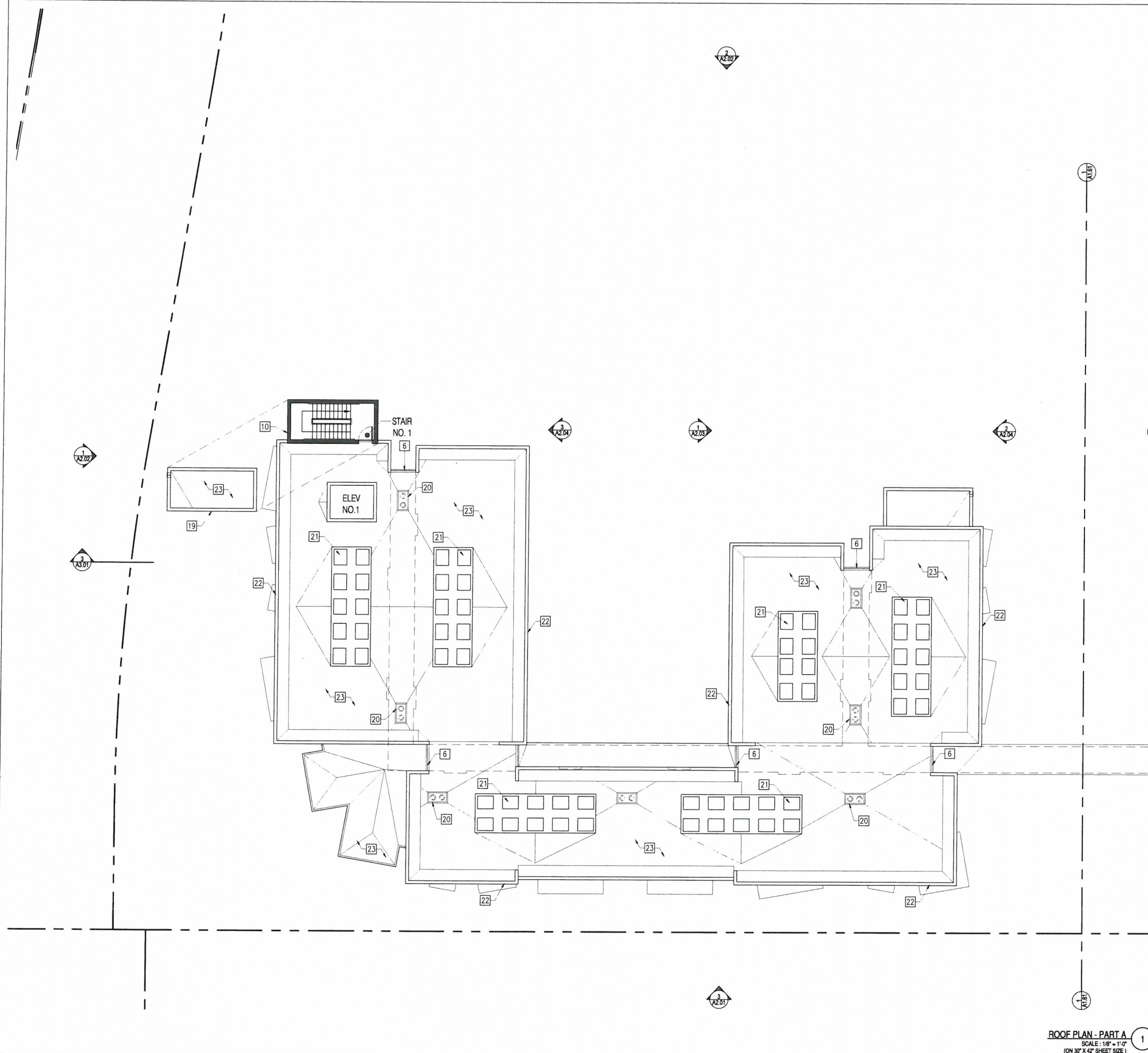
FINISH SCHEDULE

- PT-1 DUNN EDWARDS, DEC763 "OATMEAL COOKIE"
- PT-2 DUNN EDWARDS, DES382 "GOLDEN APPEAL"
- PT-3 DUNN EDWARDS, DES495 "GRAPE LEAVES"
- PT-4 DUNN EDWARDS, DER222 "WEATHER BOARD"
- PT-5 DUNN EDWARDS, DES231 "SHAKER GRAY"
- CMU-1 ANGELUS BLOCK CO. "CHARCOAL" BURNISHED
- CMU-2 ANGELUS BLOCK CO. "MIDNIGHT" BURNISHED

FIFTH FLOOR PLAN - PART B

SCALE: 1/8" = 1'-0"
(ON 30" X 42" SHEET SIZE)





KEYNOTES

- 1 MASONRY, CMU-1
- 2 MASONRY LINTEL, CMU-2
- 3 MASONRY BASE, CMU-2
- 4 MASONRY CAP, CMU-2
- 5 WROUGHT IRON GARAGE GRILL, PT-5, TYP.
- 6 WROUGHT IRON GUARDRAIL W/ PICKETS, PT-5, TYP.
- 7 20/30 SAND STUCCO FINISH, PT-1, TYP.
- 8 20/30 SAND STUCCO FINISH, PT-2, TYP.
- 9 CEMENT BOARD LAP SIDING, PT-3
- 10 CEMENT BOARD LAP SIDING, PT-4
- 11 GARAGE ENTRY CALL BOX
- 12 WROUGHT IRON GARAGE GATE, PT-5, TYP.
- 13 METAL ROLL-UP DOOR, PT-5
- 14 ALUMINUM STOREFRONT GLAZING, BRONZE ANODIZED, CLEAR GLASS, TYP.
- 15 RECESSED VINYL WINDOW, MILGARD BRONZE AND CLEAR GLASS, TYP.
- 16 STEEL TROWEL SMOOTH STUCCO FINISH, PT-4
- 17 METAL AWNING, PT-5
- 18 METAL COPING, PT-1
- 19 METAL COPING, PT-5
- 20 ROOF DRAIN, TYP.
- 21 MECHANICAL EQUIPMENT, TYP.
- 22 8" TALL PARAPET / EQUIPMENT SCREEN, REFER TO ELEVATION FOR MATERIAL.
- 23 FLAT ROOF, TYP.
- 24 ROOF DECK

FINISH SCHEDULE

- PT-1 DUNN EDWARDS, DE6763 "OATMEAL COOKIE"
- PT-2 DUNN EDWARDS, DE5382 "GOLDEN APPEAL"
- PT-3 DUNN EDWARDS, DE5495 "GRAPE LEAVES"
- PT-4 DUNN EDWARDS, DE6232 "WEATHER BOARD"
- PT-5 DUNN EDWARDS, DE6231 "SHAKER GRAY"
- CMU-1 ANGELUS BLOCK CO. "CHARCOAL" BURNISHED
- CMU-2 ANGELUS BLOCK CO. "MIDNIGHT" BURNISHED

PSL ARCHITECTS
1657 alvira street second floor los angeles, ca 90035
tel: 323.954.9999 fax: 323.954.9997
The design, drawings, and written material in these documents of service are the sole property of PSL Architects. All design and related information contained herein are for use on the specified project and shall not be replicated, disclosed, or used without the prior written consent of PSL Architects.

PROJECT:
ANCHOR PLACE
CVC PHASE V PARCEL 13 & 14

2000 RIVER AVE.
LONG BEACH, CA 90810

OWNER:
Century Villages at Cabrillo

1000 CORPORATE POINTE
CLIVER CITY, CA 90230
(T) 310.642.2059 (F) 310.258.0701

STAMP:
SITE PLAN APPLICATION SUBMITTAL
12/30/2014
NOT FOR CONSTRUCTION

ISSUE NO.	DOCUMENT PACKAGE	ISSUE DATE

KEY PLAN

PROJECT NO. 14003
PLOT DATE 12-30-14
SCALE AS SHOWN

SHEET TITLE
ROOF PLAN PART A

SHEET NO.
A1.60

CAD REF.

ROOF PLAN - PART A
SCALE: 1/8" = 1'-0"
(ON 30" X 42" SHEET SIZE)

1
A3.01

3
A2.02

1
A3.01

2
A2.03

1
A2.04

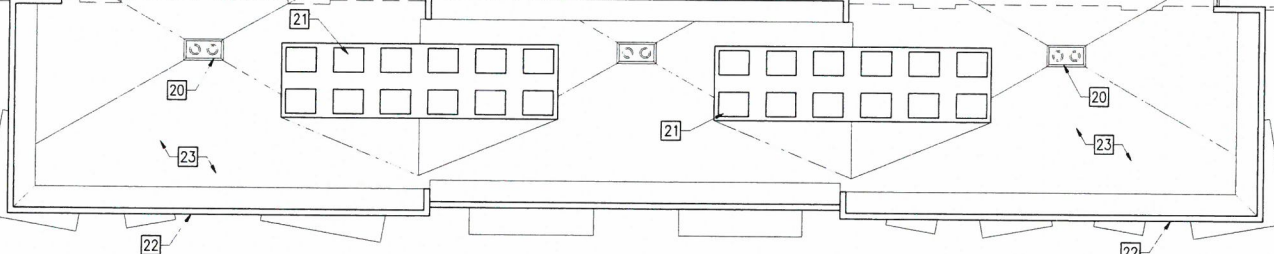
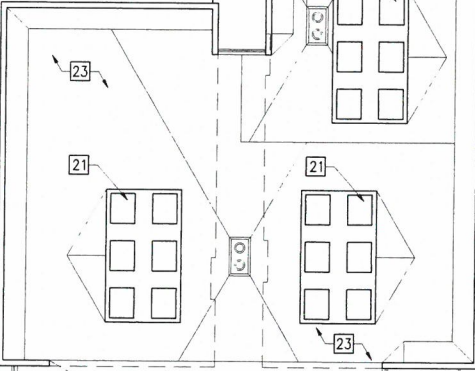
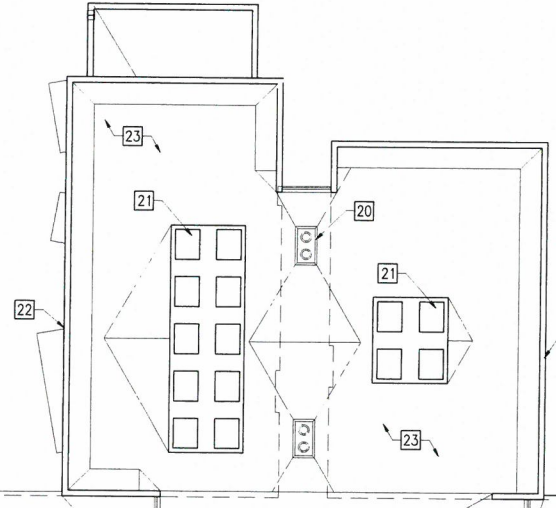
3
A2.03

1
A2.01

19

2
A3.01

22



1
A3.01

3
A2.01

1
A3.01

KEYNOTES

- 1 MASONRY, CMU-1
- 2 MASONRY LINTEL, CMU-2
- 3 MASONRY BASE, CMU-2
- 4 MASONRY CAP, CMU-2
- 5 WROUGHT IRON GARAGE GRILL, PT-5, TYP.
- 6 WROUGHT IRON GUARDRAIL W/ PICKETS, PT-5, TYP.
- 7 20/30 SAND STUCCO FINISH, PT-1, TYP.
- 8 20/30 SAND STUCCO FINISH, PT-2, TYP.
- 9 CEMENT BOARD LAP SIDING, PT-3
- 10 CEMENT BOARD LAP SIDING, PT-4
- 11 GARAGE ENTRY CALL BOX
- 12 WROUGHT IRON GARAGE GATE, PT-5, TYP.
- 13 METAL ROLL-UP DOOR, PT-5
- 14 ALUMINUM STOREFRONT GLAZING, BRONZE ANODIZED, CLEAR GLASS, TYP.
- 15 RECESSED VINYL WINDOW, MILGARD BRONZE AND CLEAR GLASS, TYP.
- 16 STEEL TROWEL SMOOTH STUCCO FINISH, PT-4
- 17 METAL AWNING, PT-5
- 18 METAL COPING, PT-1
- 19 METAL COPING, PT-5
- 20 ROOF DRAIN, TYP.
- 21 MECHANICAL EQUIPMENT, TYP.
- 22 5' TALL PARAPET / EQUIPMENT SCREEN, REFER TO ELEVATION FOR MATERIAL
- 23 FLAT ROOF, TYP.
- 24 ROOF DECK

PSL ARCHITECTS
1657 Alvera Street, Second Floor, Los Angeles, CA 90025
Tel. 323.954.9996 Fax. 323.954.9997

PROJECT:
ANCHOR PLACE
CVC PHASE V PARCEL 13 & 14

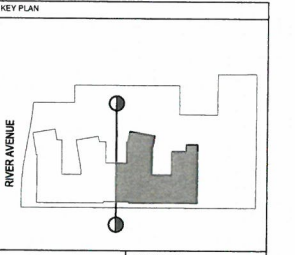
2000 RIVER AVE.
LONG BEACH, CA 90810

OWNER:

1000 CORPORATE POINTE
CULVER CITY, CA 90230
(T) 310.642.2069 (F) 310.258.0701

STAMP:
SITE PLAN APPLICATION
SUBMITTAL
12/30/2014
NOT FOR CONSTRUCTION

ISSUE NO.	DOCUMENT PACKAGE	ISSUE DATE



PROJECT NO. 14003
PLLOT DATE 12-30-14
SCALE AS SHOWN

SHEET TITLE
ROOF PLAN
PART B

SHEET NO.
A1.61

FINISH SCHEDULE

- PT-1 DUNN EDWARDS, DEC763 "OATMEAL COOKIE"
- PT-2 DUNN EDWARDS, DE5382 "GOLDEN APPEAL"
- PT-3 DUNN EDWARDS, DE5495 "GRAPE LEAVES"
- PT-4 DUNN EDWARDS, DE6222 "WEATHER BOARD"
- PT-5 DUNN EDWARDS, DE6231 "SHAKER GRAY"
- CMU-1 ANGELUS BLOCK CO. "CHARCOAL" BURNISHED
- CMU-2 ANGELUS BLOCK CO. "MIDNIGHT" BURNISHED

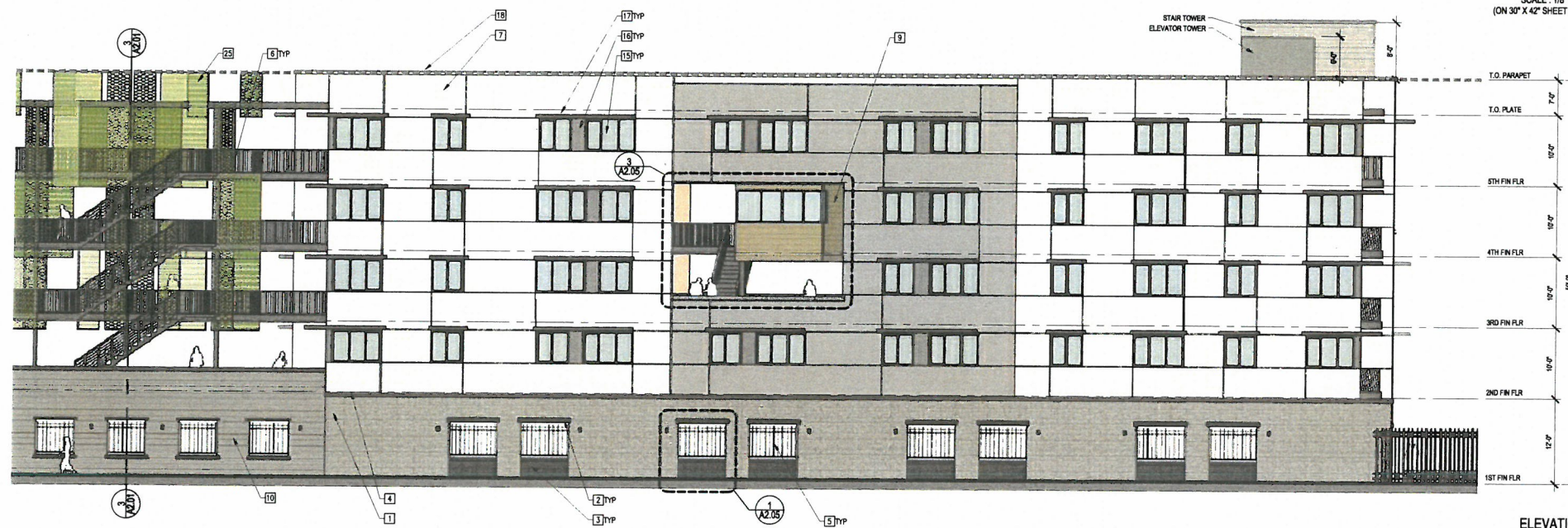
ROOF PLAN - PART B
SCALE: 1/8" = 1'-0"
(ON 30" X 42" SHEET SIZE)

1



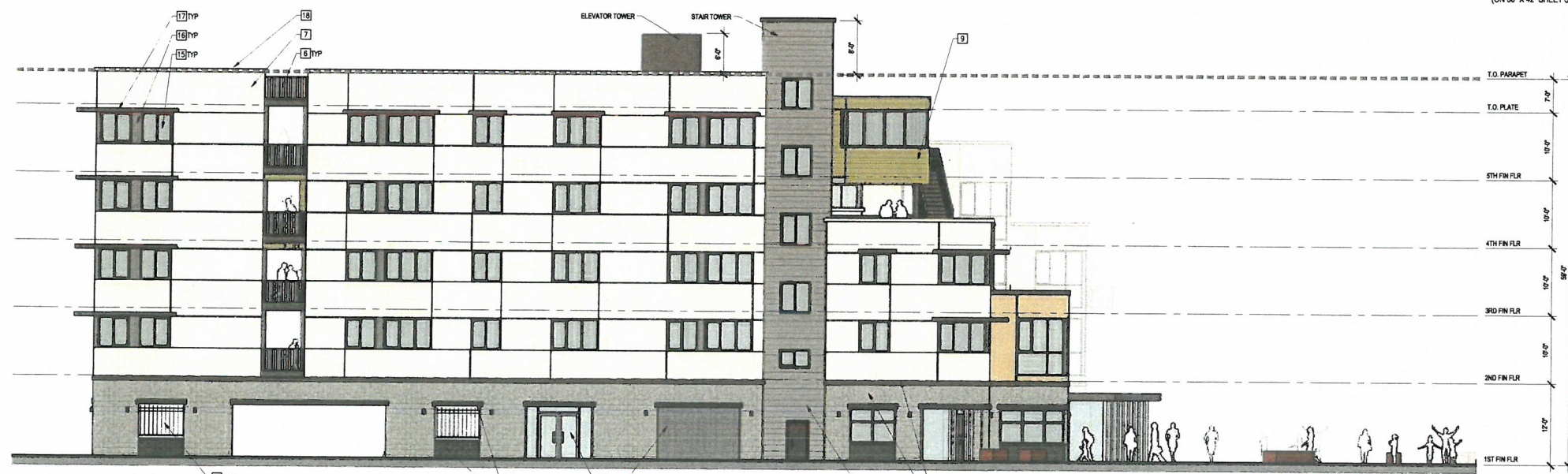
ELEVATION 3

SCALE: 1/8" = 1'-0"
(ON 30" X 42" SHEET SIZE)



ELEVATION 2

SCALE: 1/8" = 1'-0"
(ON 30" X 42" SHEET SIZE)



ELEVATION 1


SCALE: 1/8" = 1'-0"
(ON 30" X 42" SHEET SIZE)

KEYNOTES

- 1 MASONRY, CMU-1
- 2 MASONRY LINTEL, CMU-2
- 3 MASONRY BASE, CMU-2
- 4 MASONRY CAP, CMU-2
- 5 WROUGHT IRON GARAGE GRILL, PT-5, TYP.
- 6 WROUGHT IRON GUARDRAIL W/ PICKETS, PT-5, TYP.
- 7 20/30 SAND STUCCO FINISH, PT-1, TYP.
- 8 20/30 SAND STUCCO FINISH, PT-2, TYP.
- 9 CEMENT BOARD LAP SIDING, PT-3
- 10 CEMENT BOARD LAP SIDING, PT-4
- 11 GARAGE ENTRY CALL BOX
- 12 WROUGHT IRON GARAGE GATE, PT-5, TYP.
- 13 METAL ROLL-UP DOOR, PT-5
- 14 ALUMINUM STOREFRONT GLAZING, BRONZE ANODIZED, CLEAR GLASS, TYP.
- 15 RECESSED VINYL WINDOW, MILGARD BRONZE AND CLEAR GLASS, TYP.
- 16 STEEL TROWEL SMOOTH STUCCO FINISH, PT-4
- 17 METAL AWNING, PT-5
- 18 METAL COPING, PT-1
- 19 METAL COPING, PT-5
- 20 ROOF DRAIN, TYP.
- 21 MECHANICAL EQUIPMENT, TYP.
- 22 9' TALL PARAPET / EQUIPMENT SCREEN, REFER TO ELEVATION FOR MATERIAL
- 23 FLAT ROOF, TYP.
- 24 ROOF DECK
- 25 PERFORATED METAL PANEL SCREEN, 3 TYPES: 1", 1-1/2", 2" HOLES, PAINTED 3 SHADES OF GREEN

FINISH SCHEDULE

PT-1	DUNN EDWARDS, DE3763 "OATMEAL COOKIE"
PT-2	DUNN EDWARDS, DE5382 "GOLDEN APPEAL"
PT-3	DUNN EDWARDS, DE5495 "GRAPE LEAVES"
PT-4	DUNN EDWARDS, DE6232 "WEATHER BOARD"
PT-5	DUNN EDWARDS, DE6231 "SHAKER GRAY"
CMU-1	ANGELUS BLOCK CO. "CHARCOAL" BURNISHED
CMU-2	ANGELUS BLOCK CO. "MIDNIGHT" BURNISHED



PSL ARCHITECTS
 1657 Alhambra Street Second Floor Los Angeles, CA 90035
 Tel. 323.954.9998 Fax 323.954.9997

The design, drawings, and written material in these documents of service are the sole property of PSL Architects. All design and related information contained herein are for use on the specified project and shall not be replicated, checked, or used without the prior written consent of PSL Architects.

PROJECT:
ANCHOR PLACE
 CVC PHASE V PARCEL 13 & 14

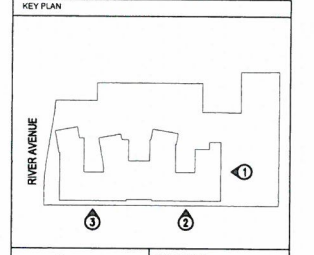
2000 RIVER AVE
LONG BEACH, CA 90810

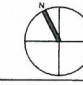
OWNER:


Century Villages at Cabrillo
 1000 CORPORATE POINTE
 OULVER CITY, CA 90230
 (714) 910.6422 (562) 310.2568 (F) 310.256.0701

SITE PLAN APPLICATION
SUBMITTAL
12/30/2014
NOT FOR CONSTRUCTION

ISSUE NO.	DOCUMENT PACKAGE	ISSUE DATE

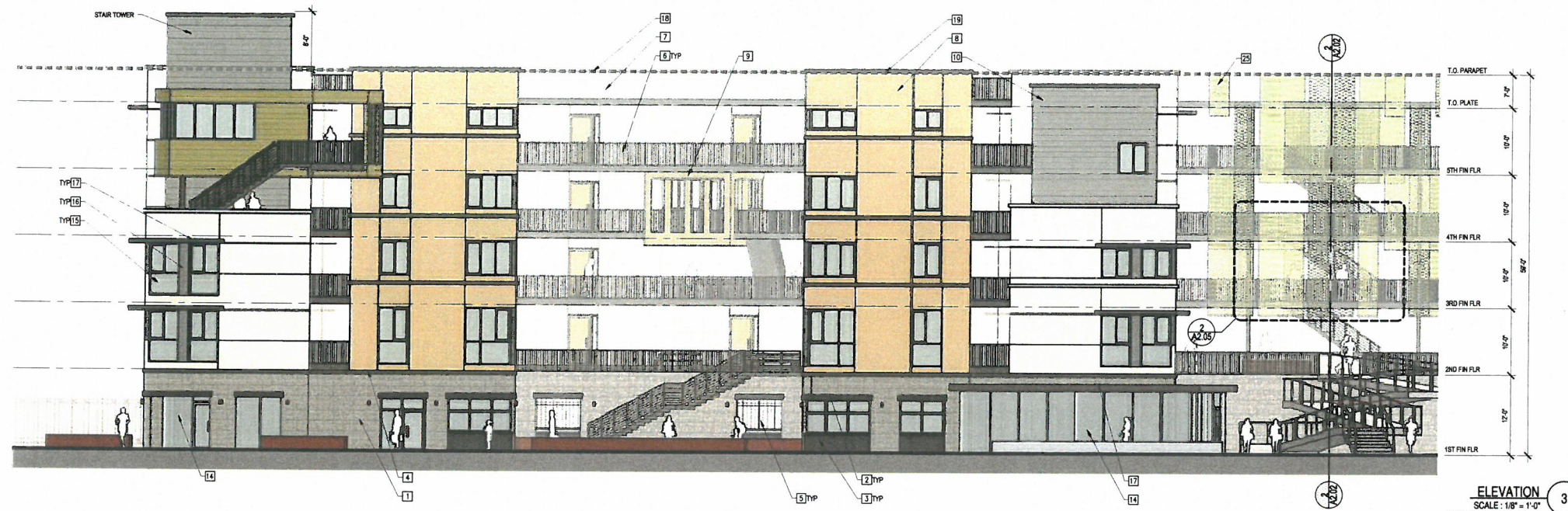


 PROJECT NO. 14003
 PLOT DATE 12-30-14
 SCALE AS SHOWN

SHEET TITLE
ELEVATIONS

SHEET NO. **A2.01**

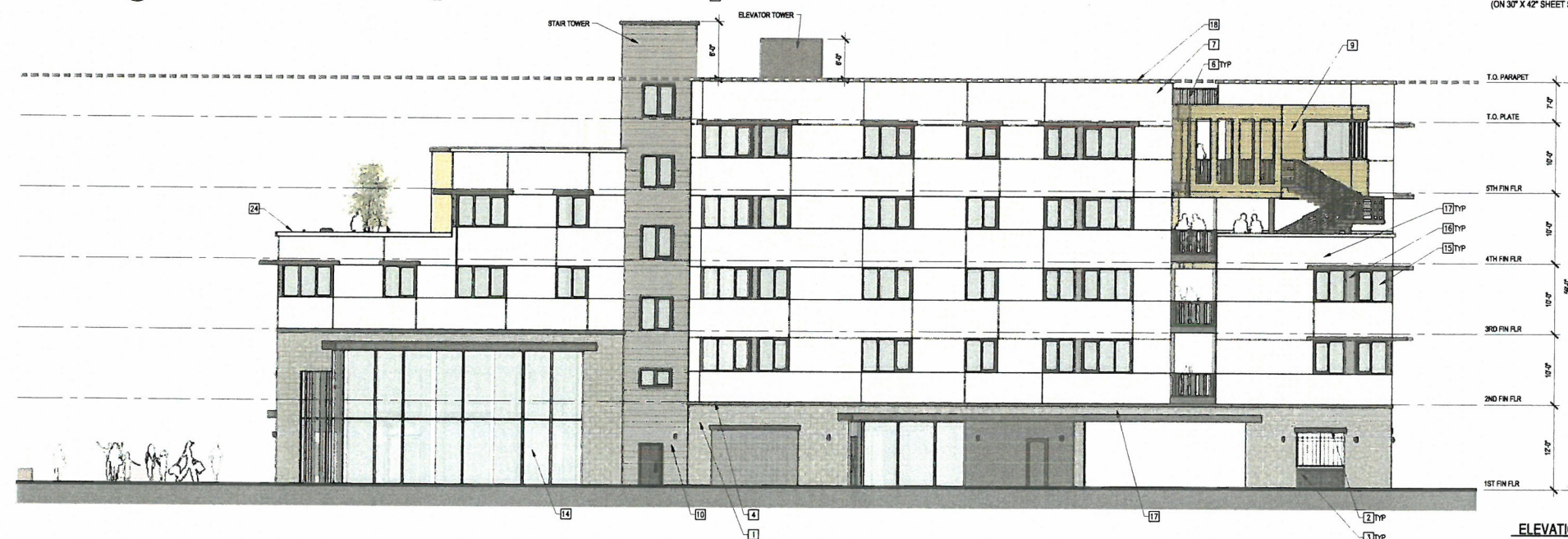
CAD REF.



ELEVATION 3
 SCALE: 1/8" = 1'-0"
 (ON 30" X 42" SHEET SIZE)



ELEVATION 2
 SCALE: 1/8" = 1'-0"
 (ON 30" X 42" SHEET SIZE)



ELEVATION 1
 SCALE: 1/8" = 1'-0"
 (ON 30" X 42" SHEET SIZE)

KEYNOTES

- 1 MASONRY, CMU-1
- 2 MASONRY LINTEL, CMU-2
- 3 MASONRY BASE, CMU-2
- 4 MASONRY CAP, CMU-2
- 5 WROUGHT IRON GARAGE GRILL, PT-5, TYP.
- 6 WROUGHT IRON GUARDRAIL W/ PICKETS, PT-5, TYP.
- 7 20/30 SAND STUCCO FINISH, PT-1, TYP.
- 8 20/30 SAND STUCCO FINISH, PT-2, TYP.
- 9 CEMENT BOARD LAP SIDING, PT-3
- 10 CEMENT BOARD LAP SIDING, PT-4
- 11 GARAGE ENTRY CALL BOX
- 12 WROUGHT IRON GARAGE GATE, PT-5, TYP.
- 13 METAL ROLL-UP DOOR, PT-5
- 14 ALUMINUM STOREFRONT GLAZING, BRONZE ANODIZED, CLEAR GLASS, TYP.
- 15 RECESSED VINYL WINDOW, MILGARD BRONZE AND CLEAR GLASS, TYP.
- 16 STEEL TROWEL SMOOTH STUCCO FINISH, PT-4
- 17 METAL AWNING, PT-5
- 18 METAL COPING, PT-1
- 19 METAL COPING, PT-5
- 20 ROOF DRAIN, TYP.
- 21 MECHANICAL EQUIPMENT, TYP.
- 22 5' TALL PARAPET / EQUIPMENT SCREEN, REFER TO ELEVATION FOR MATERIAL.
- 23 FLAT ROOF, TYP.
- 24 ROOF DECK
- 25 PERFORATED METAL PANEL SCREEN, 3 TYPES: 1", 1-1/2", 2" HOLES, PAINTED 3 SHADES OF GREEN

PSL ARCHITECTS
 1657 Alvara Street second floor Los Angeles, CA 90035
 Tel. 323.954.9998 Fax 323.954.9997

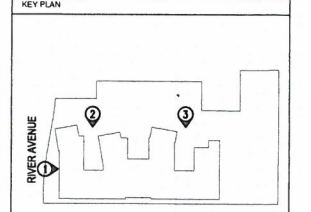
PROJECT: ANCHOR PLACE
 CVC PHASE V PARCEL 13 & 14

2000 RIVER AVE
 LONG BEACH, CA 90810

OWNER: Century Villages at Cabrillo
 1000 CORPORATE POINT
 CLAYMER CITY, CA 92520
 (714) 310.6422/3059 (F) 310.298.0701

STAMP: SITE PLAN APPLICATION SUBMITTAL 12/30/2014 NOT FOR CONSTRUCTION

ISSUE NO.	DOCUMENT PACKAGE	ISSUE DATE



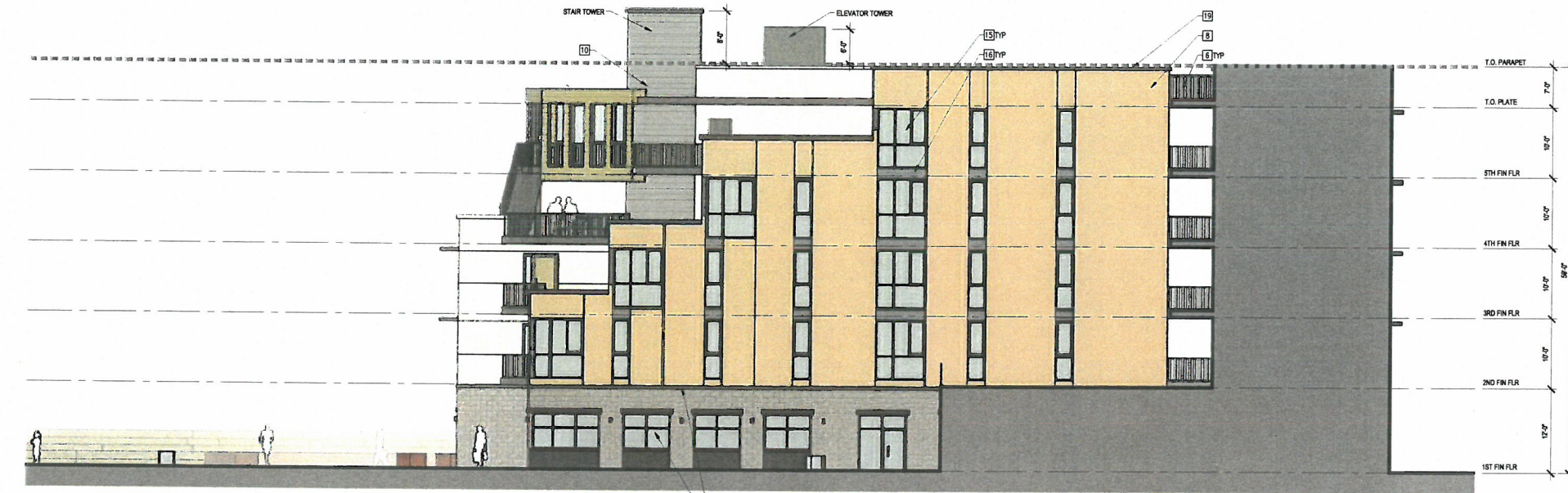
PROJECT NO. 14003
 PLOT DATE 12-30-14
 SCALE AS SHOWN

ELEVATIONS

SHOOT NO. A2.02

FINISH SCHEDULE

- PT-1 DUNN EDWARDS, DEC783 "OATMEAL COOKIE"
- PT-2 DUNN EDWARDS, DE5382 "GOLDEN APPEAL"
- PT-3 DUNN EDWARDS, DE5495 "GRAPE LEAVES"
- PT-4 DUNN EDWARDS, DE6222 "WEATHER BOARD"
- PT-5 DUNN EDWARDS, DE6231 "SHAKER GRAY"
- CMU-1 ANGELUS BLOCK CO. "CHARCOAL" BURNISHED
- CMU-2 ANGELUS BLOCK CO. "MIDNIGHT" BURNISHED



KEYNOTES

- 1 MASONRY, CMU-1
- 2 MASONRY LINTEL, CMU-2
- 3 MASONRY BASE, CMU-2
- 4 MASONRY CAP, CMU-2
- 5 WROUGHT IRON GARAGE GRILL, PT-5, TYP.
- 6 WROUGHT IRON GUARDRAIL W/ PICKETS, PT-5, TYP.
- 7 2030 SAND STUCCO FINISH, PT-1, TYP.
- 8 2030 SAND STUCCO FINISH, PT-2, TYP.
- 9 CEMENT BOARD LAP SIDING, PT-3
- 10 CEMENT BOARD LAP SIDING, PT-4
- 11 GARAGE ENTRY CALL BOX
- 12 WROUGHT IRON GARAGE GATE, PT-5, TYP.
- 13 METAL ROLL-UP DOOR, PT-5
- 14 ALUMINUM STOREFRONT GLAZING, BRONZE ANODIZED, CLEAR GLASS, TYP.
- 15 RECESSED VINYL WINDOW, MILGARD BRONZE AND CLEAR GLASS, TYP.
- 16 STEEL TROWEL SMOOTH STUCCO FINISH, PT-4
- 17 METAL AWNING, PT-5
- 18 METAL COPING, PT-1
- 19 METAL COPING, PT-5
- 20 ROOF DRAIN, TYP.
- 21 MECHANICAL EQUIPMENT, TYP.
- 22 5' TALL PARAPET / EQUIPMENT SCREEN, REFER TO ELEVATION FOR MATERIAL
- 23 FLAT ROOF, TYP.
- 24 ROOF DECK

PSL ARCHITECTS
 1657 alvira street second floor los angeles, ca 90035
 tel. 323.954.9998 323.954.9997 fax.

The design, drawings, and written material in these documents of service are the sole property of PSL Architects. All design and related information contained herein are for use on the specified project and shall not be duplicated, borrowed, or used without the prior written consent of PSL Architects.

PROJECT:
ANCHOR PLACE
 CVC PHASE V PARCEL 13 & 14

2000 RIVER AVE.
 LONG BEACH, CA 90810

OWNER:

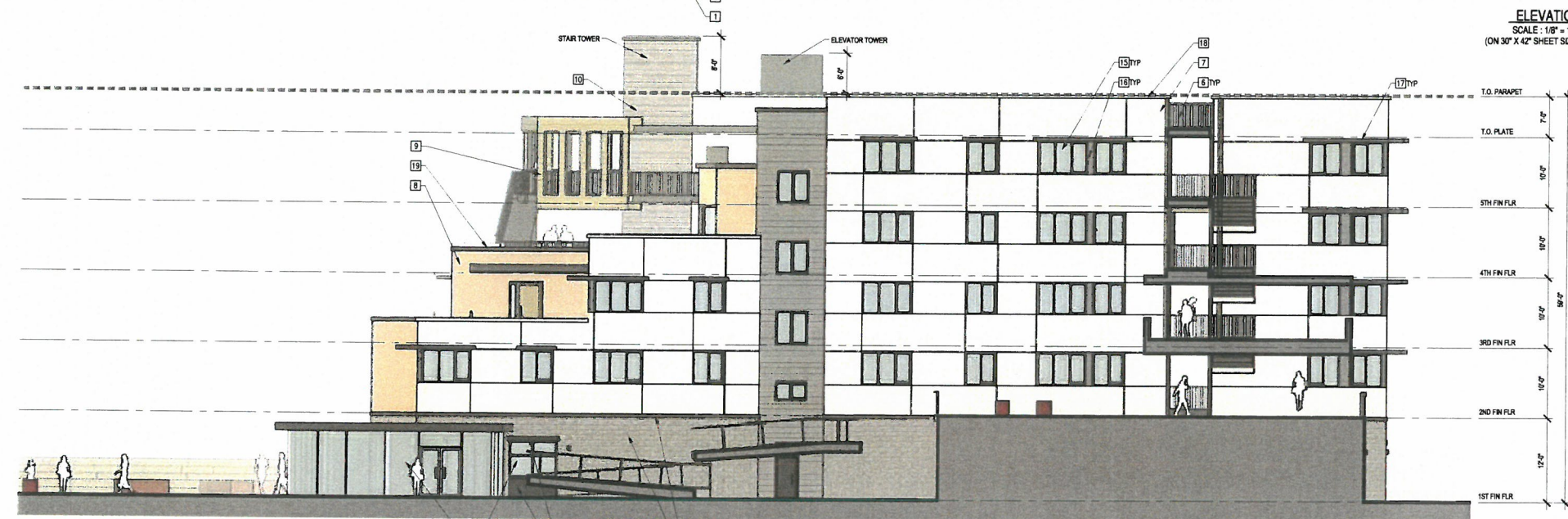
Century Villages at Cabrillo

1000 CORPORATE POINTE
 CULVER CITY, CA 90230
 (T) 310.642.2059 (F) 310.258.0701

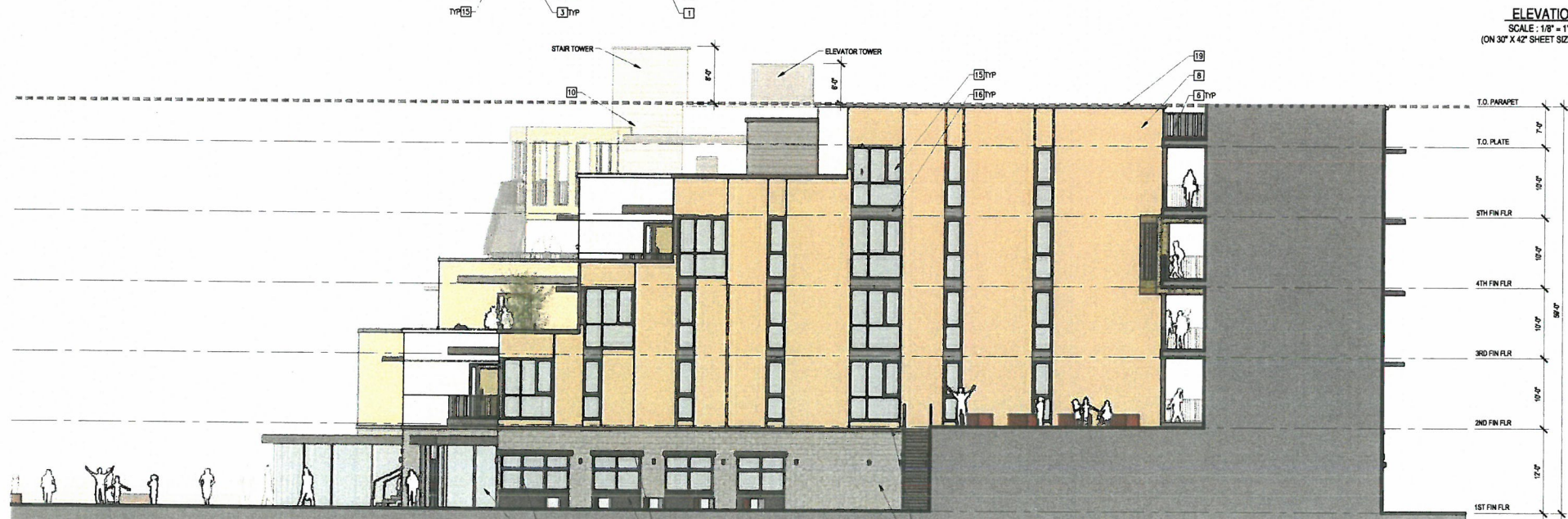
STAMP:

SITE PLAN APPLICATION SUBMITTAL
 12/30/2014
 NOT FOR CONSTRUCTION

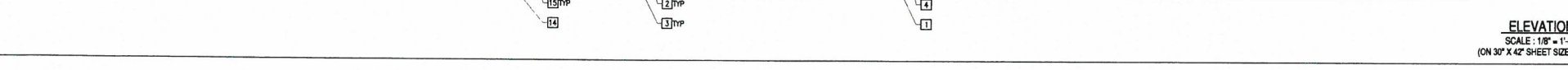
ISSUE NO.	DOCUMENT PACKAGE	ISSUE DATE



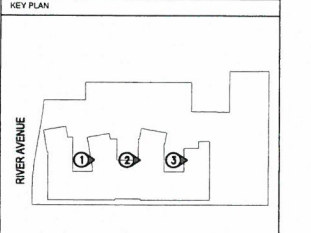
ELEVATION
 SCALE: 1/8" = 1'-0"
 (ON 30" X 42" SHEET SIZE) 3



ELEVATION
 SCALE: 1/8" = 1'-0"
 (ON 30" X 42" SHEET SIZE) 2



ELEVATION
 SCALE: 1/8" = 1'-0"
 (ON 30" X 42" SHEET SIZE) 1



PROJECT NO. 14003
 PLOT DATE 12-30-14
 SCALE AS SHOWN

ELEVATIONS

FINISH SCHEDULE

- PT-1 DUNN EDWARDS, DE3763 "OATMEAL COOKIE"
- PT-2 DUNN EDWARDS, DE5382 "GOLDEN APPEAL"
- PT-3 DUNN EDWARDS, DE5495 "GRAPE LEAVES"
- PT-4 DUNN EDWARDS, DE6222 "WEATHER BOARD"
- PT-5 DUNN EDWARDS, DE6231 "SHAKER GRAY"
- CMU-1 ANGELUS BLOCK CO. "CHARCOAL" BURNISHED
- CMU-2 ANGELUS BLOCK CO. "MIDNIGHT" BURNISHED

SHEET NO. **A2.03**



PSL ARCHITECTS
 1657 alvira street second floor los angeles, ca 90035
 tel: 323.954.9996 fax: 323.954.9997

The design, drawings, and written materials in these documents of service are the sole property of PSL Architects. All design and related information contained herein are for use on the specified project and shall not be replicated, distributed, or used without the prior written consent of PSL Architects.

PROJECT:
ANCHOR PLACE
 CVC PHASE V PARCEL 13 & 14

2000 RIVER AVE.
 LONG BEACH, CA 90810

OWNER:



1000 CORPORATE POINTE
 OLIVER CITY, CA 90230
 (T) 310.642.2059 (F) 310.258.0701

STAMP:

**SITE PLAN APPLICATION
 SUBMITTAL
 12/30/2014
 NOT FOR CONSTRUCTION**

ISSUE NO.	DOCUMENT PACKAGE	ISSUE DATE



BUILDING PERSPECTIVE
 SCALE: NTS 3

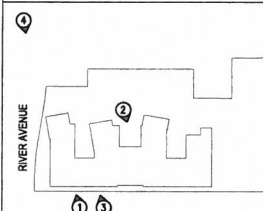


BUILDING PERSPECTIVE
 SCALE: NTS 2



BUILDING PERSPECTIVE
 SCALE: NTS 1

KEY PLAN



PROJECT NO.	14003
PLOT DATE	12-30-14
SCALE	AS SHOWN

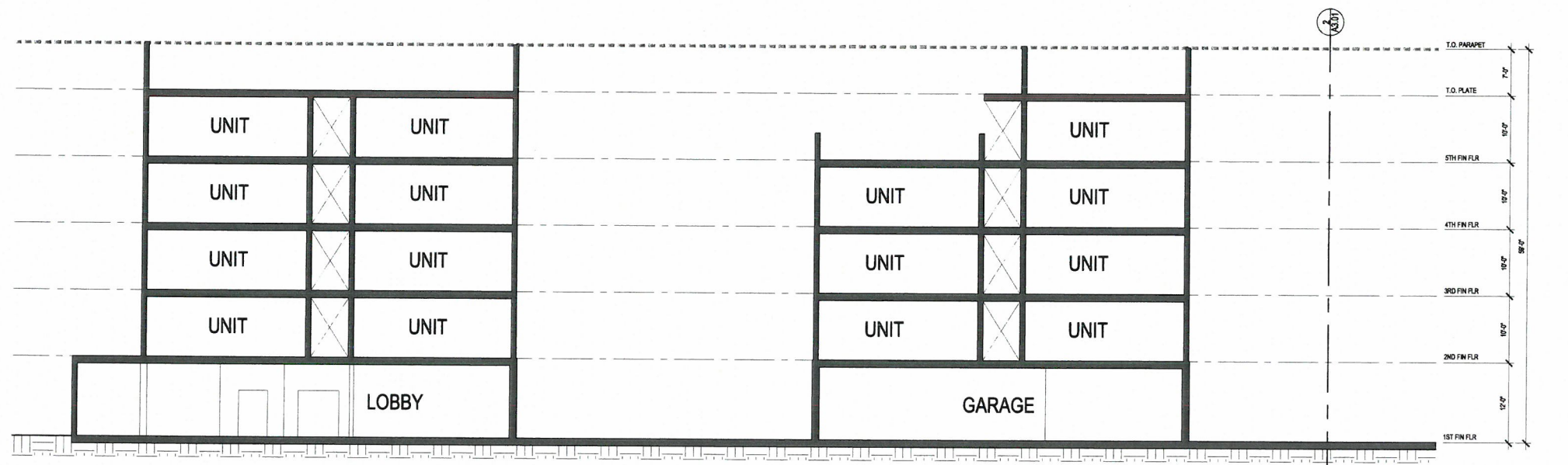
SHEET TITLE

ENLARGED ELEVATIONS

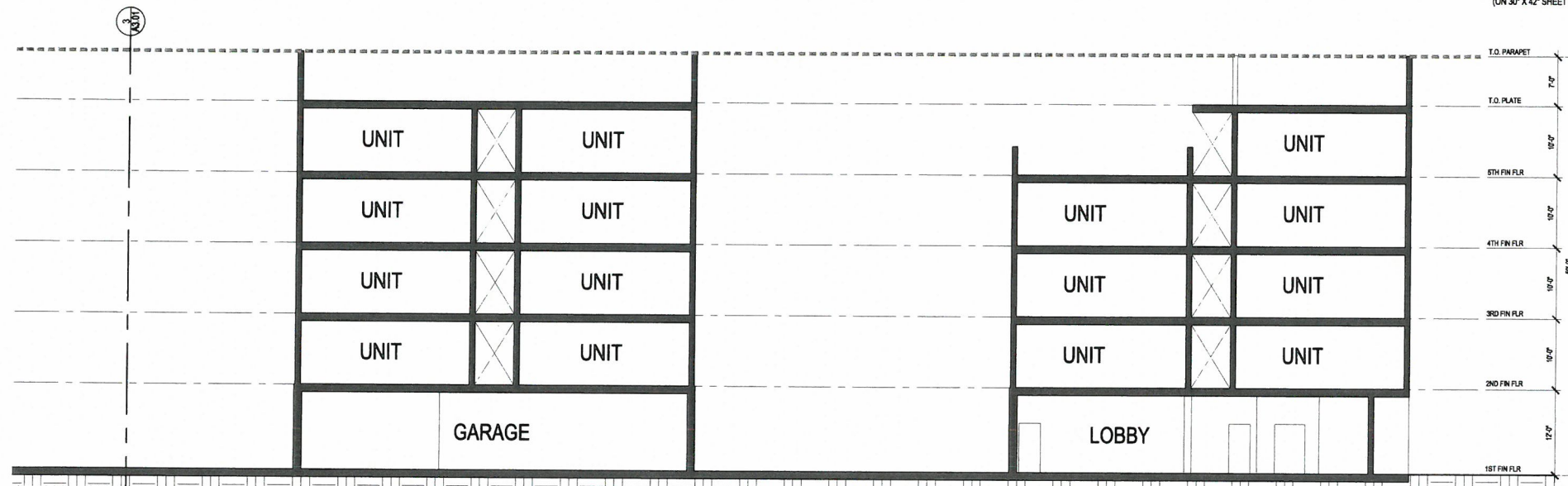
SHEET NO.

A2.05

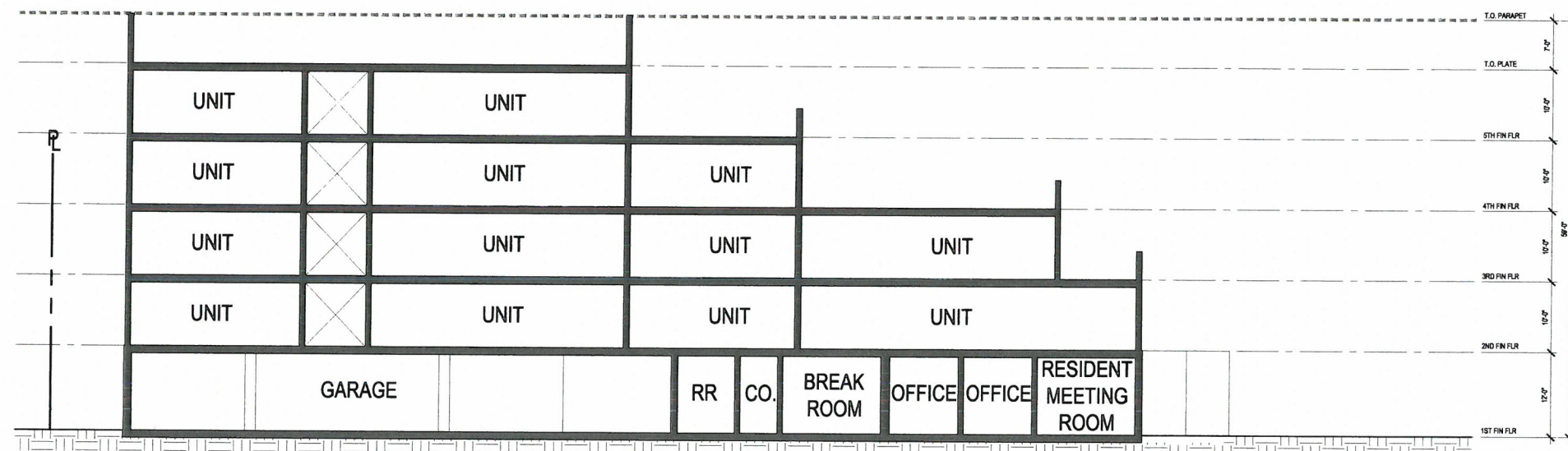
CAD REF.



SECTION 2 - PART A
 SCALE: 1/8" = 1'-0"
 (ON 30" X 42" SHEET SIZE) 3



SECTION 2 - PART B
 SCALE: 1/8" = 1'-0"
 (ON 30" X 42" SHEET SIZE) 2



SECTION 1
 SCALE: 1/8" = 1'-0"
 (ON 30" X 42" SHEET SIZE) 1

KEYNOTES:

GENERAL NOTES

LEGEND:

PSL ARCHITECTS
 1657 ALVIRA STREET SECOND FLOOR LOS ANGELES, CA 90035
 TEL. 323.954.9999 FAX 323.954.9997 FAX

The design, drawings, and written material in these documents of service are the sole property of PSL Architects. All design and related information contained herein are for use only for the specified project and shall not be duplicated, reproduced, or used without the prior written consent of PSL Architects.

PROJECT:
ANCHOR PLACE
 CVC PHASE V PARCEL 13 & 14

2000 RIVER AVE.
 LONG BEACH, CA 90810

OWNER:

Century Villages at Cabrillo
 1000 CORPORATE POINTE
 OLAVER CITY, CA 90230
 (T) 310.642.2059 (F) 310.258.0701

STAMP:

**SITE PLAN APPLICATION
 SUBMITTAL
 12/30/2014
 NOT FOR CONSTRUCTION**

ISSUE NO.	DOCUMENT PACKAGE	ISSUE DATE

KEY PLAN

PROJECT NO.: 14003
PLOT DATE: 12-30-14
SCALE: AS SHOWN


BUILDING SECTIONS

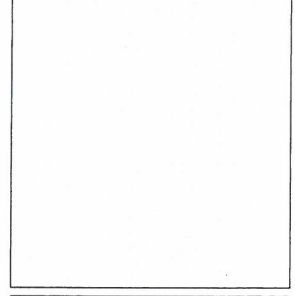
SHEET NO.: A3.01

PSL ARCHITECTS
1637 alvira street second floor los angeles, ca 90035
tel: 323.954.9996 fax: 323.954.9997

PROJECT:
ANCHOR PLACE
CVC PHASE V PARCEL 13 & 14

2000 RIVER AVE.
LONG BEACH, CA 90810

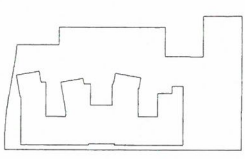
OWNER:

Century Villages at Cabrillo
1000 CORPORATE POINTE
CLULVER CITY, CA 90230
(T) 310.642.2059 (F) 310.258.0701



STAMP:
SITE PLAN APPLICATION
SUBMITTAL
12/30/2014
NOT FOR CONSTRUCTION

ISSUE NO.	DOCUMENT PACKAGE	ISSUE DATE

KEY PLAN
RIVER AVENUE

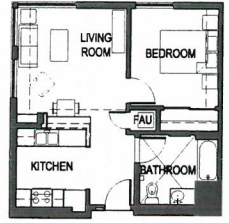


PROJECT NO.	14003
PLOT DATE	12-30-14
SCALE	AS SHOWN

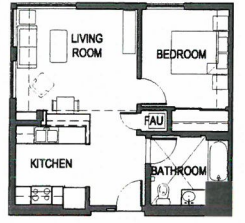
SHEET TITLE
ENLARGED UNIT PLANS

SHEET NO.
A4.01

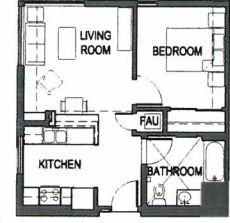
CAD REF.



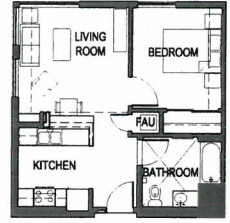
A9 - 1 BEDROOM UNIT PLAN (10)
568 SF OCCURS 1 TIME
SCALE: 1/8" = 1'-0"
(ON 30" X 42" SHEET SIZE)



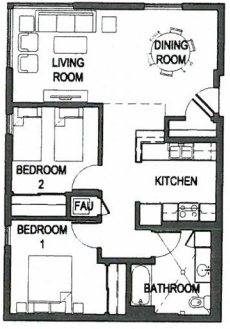
A7 - 1 BEDROOM UNIT PLAN (8)
585 SF OCCURS 1 TIME
SCALE: 1/8" = 1'-0"
(ON 30" X 42" SHEET SIZE)



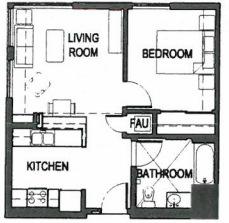
A5 - 1 BEDROOM UNIT PLAN (5)
568 SF OCCURS 4 TIMES
SCALE: 1/8" = 1'-0"
(ON 30" X 42" SHEET SIZE)



A3 - 1 BEDROOM UNIT PLAN (3)
569 SF OCCURS 18 TIMES
SCALE: 1/8" = 1'-0"
(ON 30" X 42" SHEET SIZE)



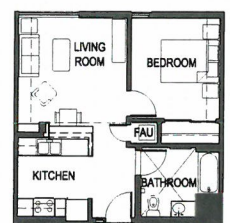
B2 - 2 BEDROOM UNIT PLAN (12)
663 SF OCCURS 7 TIMES
SCALE: 1/8" = 1'-0"
(ON 30" X 42" SHEET SIZE)



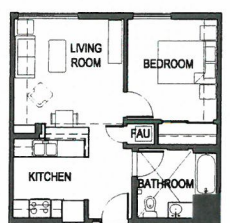
A8 - 1 BEDROOM UNIT PLAN (9)
576 SF OCCURS 2 TIMES
SCALE: 1/8" = 1'-0"
(ON 30" X 42" SHEET SIZE)



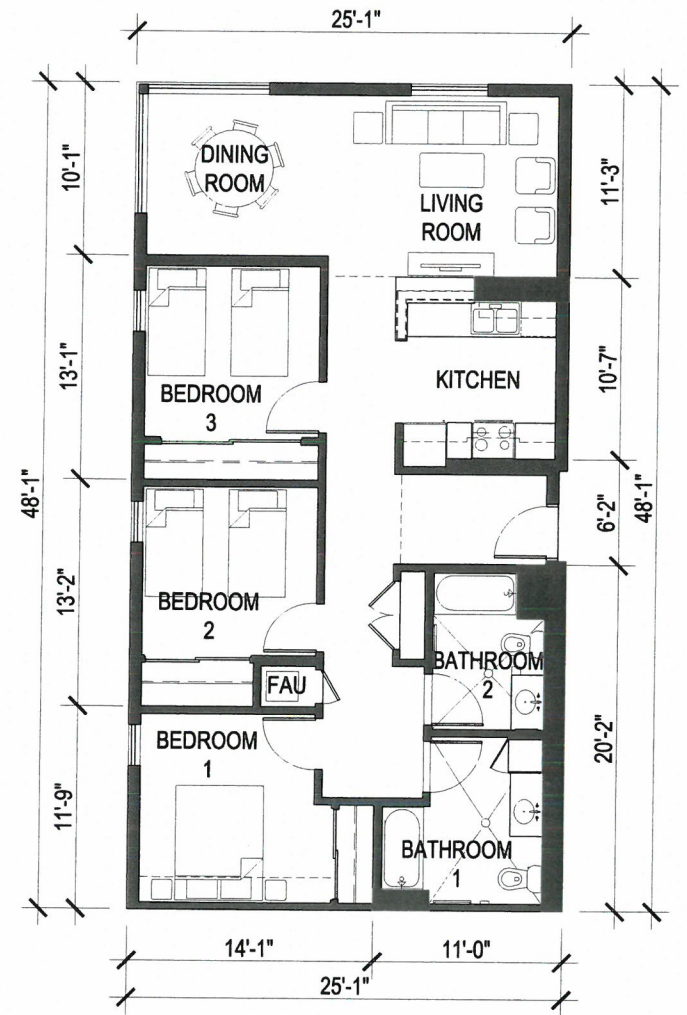
A6 - 1 BEDROOM UNIT PLAN (7)
606 SF OCCURS 1 TIME
SCALE: 1/8" = 1'-0"
(ON 30" X 42" SHEET SIZE)



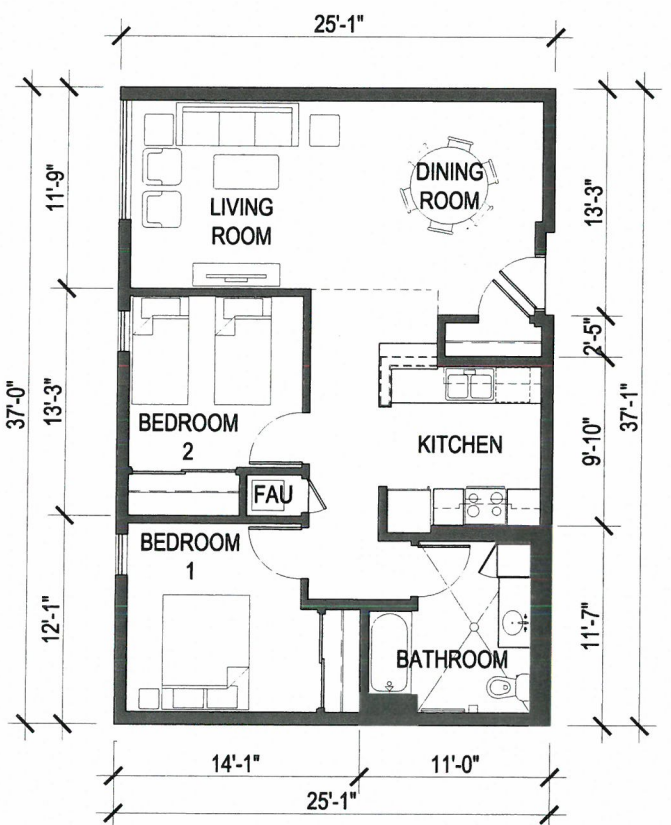
A4 - 1 BEDROOM UNIT PLAN (4)
572 SF OCCURS 5 TIMES
SCALE: 1/8" = 1'-0"
(ON 30" X 42" SHEET SIZE)



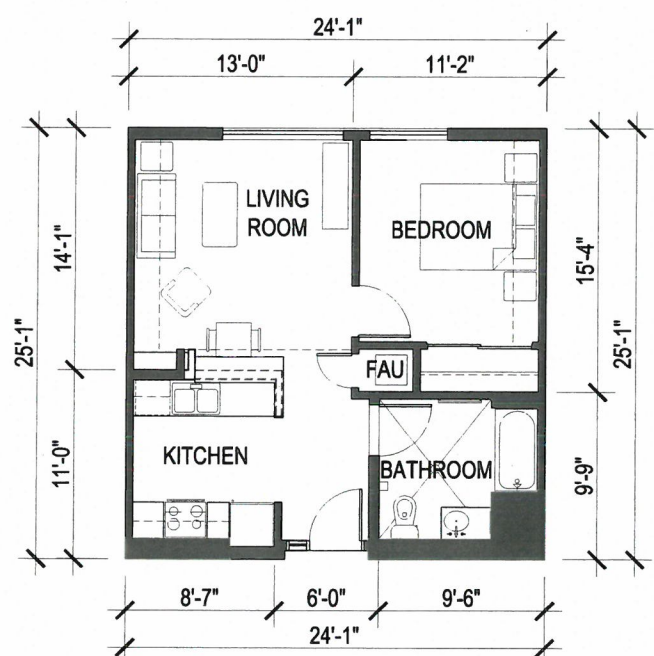
A2 - 1 BEDROOM UNIT PLAN (2)
572 SF OCCURS 27 TIMES
SCALE: 1/8" = 1'-0"
(ON 30" X 42" SHEET SIZE)



C1 - 3 BEDROOM UNIT PLAN (11)
1140 SF OCCURS 3 TIMES
SCALE: 1/4" = 1'-0"
(ON 30" X 42" SHEET SIZE)



B1 - 2 BEDROOM UNIT PLAN (6)
823 SF OCCURS 13 TIMES
SCALE: 1/4" = 1'-0"
(ON 30" X 42" SHEET SIZE)

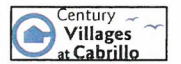


A1 - 1 BEDROOM UNIT PLAN (1)
573 SF OCCURS 36 TIMES
SCALE: 1/4" = 1'-0"
(ON 30" X 42" SHEET SIZE)

The design, drawings, and written material or those documents of service are the sole property of PSL Architects. All design and material information contained herein are for use on the specified projects and shall not be published, disclosed, or used without the prior written consent of PSL Architects.

PROJECT: **ANCHOR PLACE**
 CVC PHASE V PARCEL 13 & 14

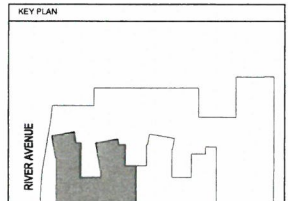
2000 RIVER AVE.
 LONG BEACH, CA 90810

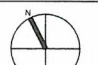
OWNER:

 Century Villages
 at Cabrillo
 1000 CORPORATE POINTE
 CULVER CITY, CA 90230
 (T) 310.642.2059 (F) 310.258.0701

STAMP:
**SITE PLAN APPLICATION
 SUBMITTAL
 12/30/2014
 NOT FOR CONSTRUCTION**

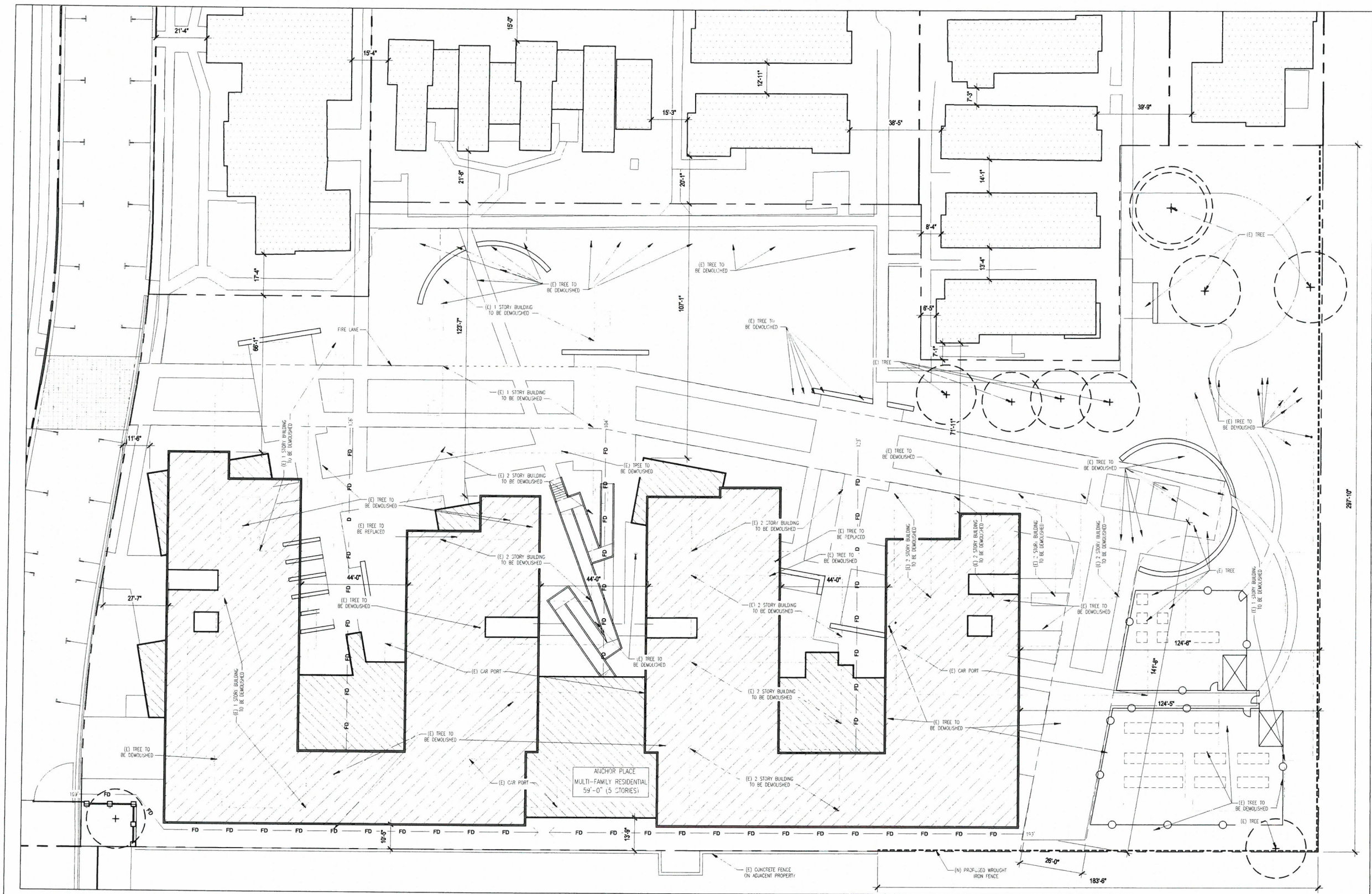
ISSUE NO. DOCUMENT PACKAGE ISSUE DATE

ISSUE NO.	DOCUMENT PACKAGE	ISSUE DATE

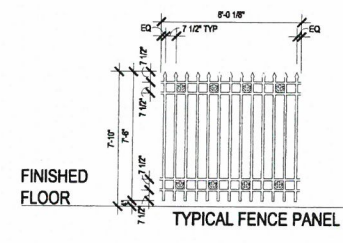


	PROJECT NO.	14003
	PLT DATE	12-30-14
	SCALE	AS SHOWN
	SHEET TITLE	PROPOSED SITE FENCE

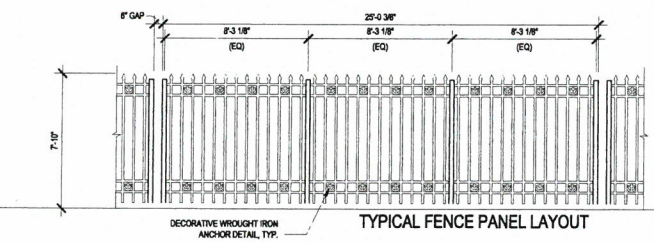
SHEET NO. **A4.02**
 CAD REF.



PROJECT SITE PLAN
 SCALE: 1/16" = 1'-0"
 (ON 30" X 42" SHEET SIZE)



PROPOSED FENCE PANEL DETAIL
 SCALE: 1/4" = 1'-0"
 (ON 30" X 42" SHEET SIZE)



PROPOSED FENCE DETAIL
 SCALE: 1/4" = 1'-0"
 (ON 30" X 42" SHEET SIZE)



PROPOSED FENCE GRAPHIC RENDERING
 SCALE: NTS

