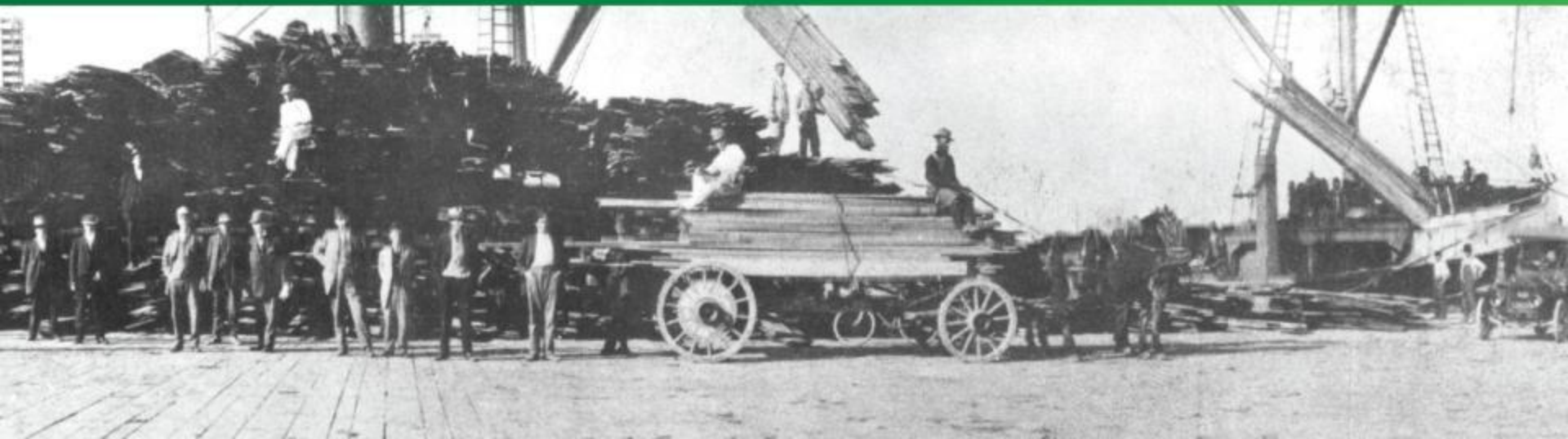


# Tidelands and Harbor Committee

## Port Infrastructure Projects

Al Moro  
Chief Harbor Engineer

October 25, 2011

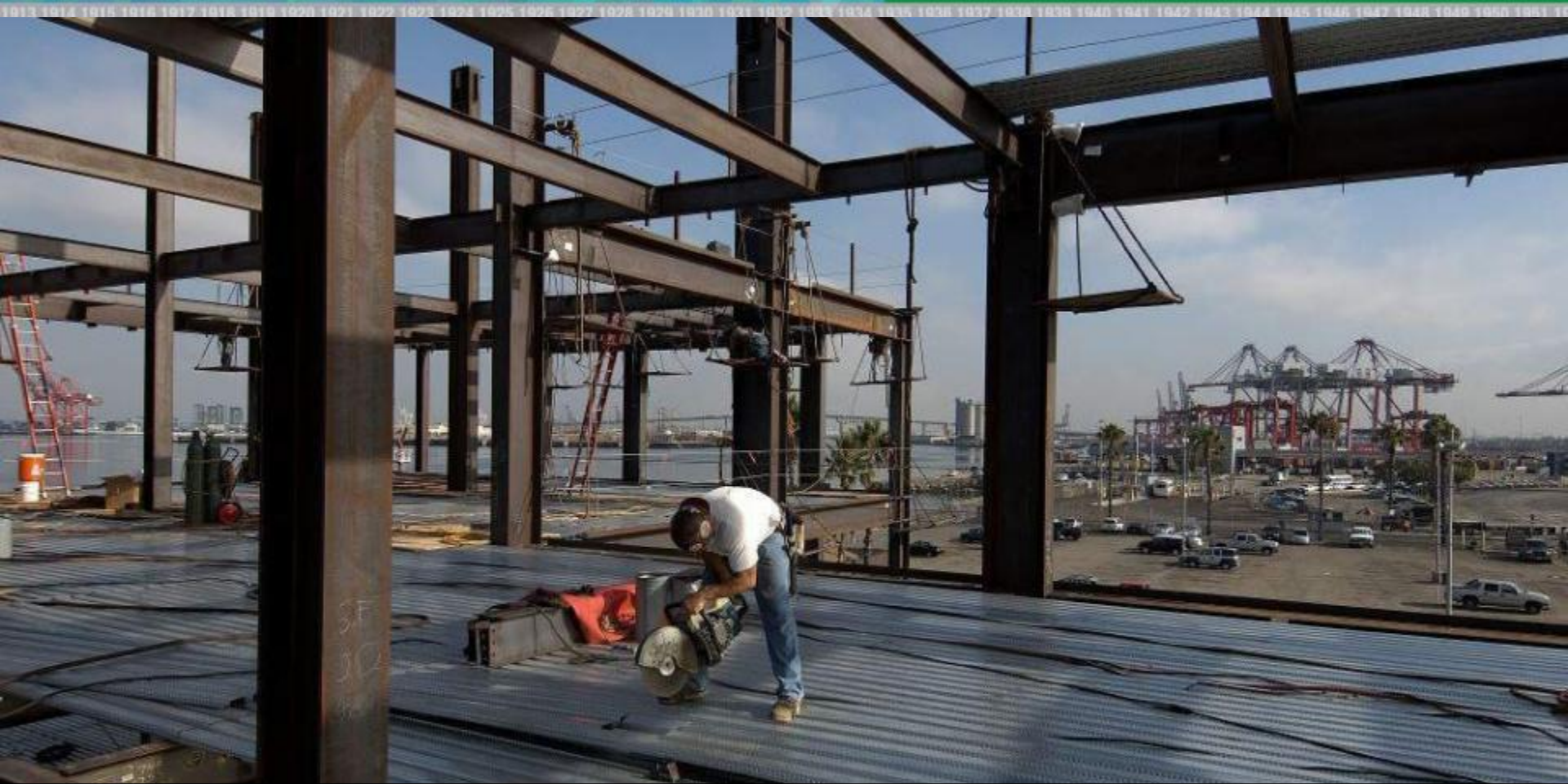


# Future

100  
Centennial  
Celebration



Port of  
**LONG BEACH**  
The Green Port

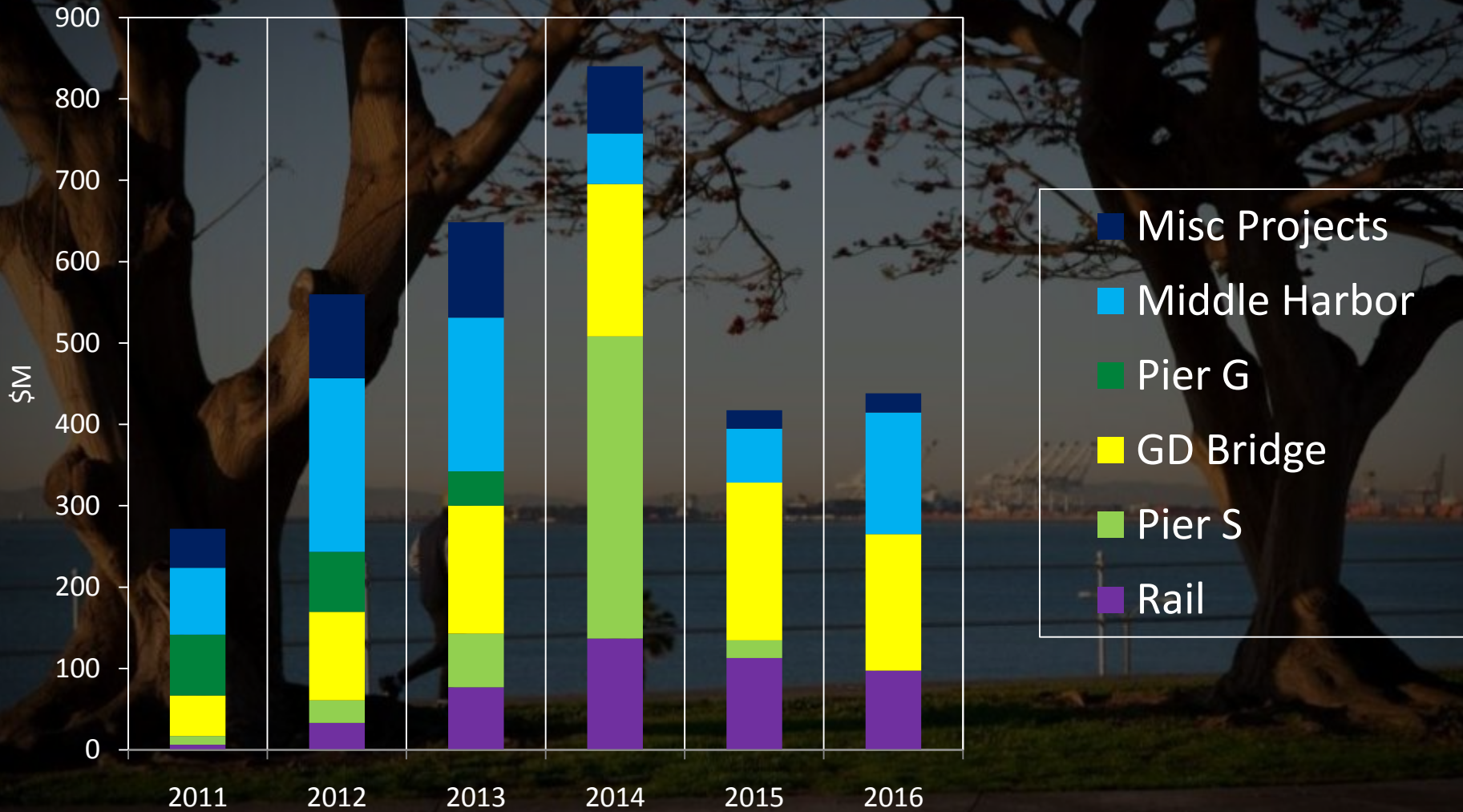


Port is investing \$4 billion over next decade in terminal, infrastructure improvements



# Capital Expenditures

100  
Centennial  
Celebration



# Pier G Redevelopment

100  
Centennial  
Celebration



Port of  
**LONG BEACH**  
The Green Port

1913 1914 1915 1916 1917 1918 1919 1920 1921 1922 1923 1924 1925 1926 1927 1928 1929 1930 1931 1932 1933 1934 1935 1936 1937 1938 1939 1940 1941 1942 1943 1944 1945 1946 1947 1948 1949 1950 1951 1952 1953 1954 1955 1956 1957 1958 1959 1960 1961 1962 1963 1964 1965 1966 1967 1968 1969 1970 1971 1972 1973 1974 1975 1976 1977 1978 1979 1980 1981 1982 1983 1984 1985 1986 1987 1988 1989 1990 1991 1992 1993 1994 1995 1996 1997 1998 1999 2000 2001 2002 2003 2004 2005 2006 2007 2008 2009 2010 2011 2012 2013 2014 2015 2016 2017 2018 2019 2020 2021 2022 2023 2024 2025 2026 2027 2028 2029 2030 2031 2032 2033 2034 2035 2036 2037 2038 2039 2040 2041 2042 2043 2044 2045 2046 2047 2048 2049 2050 2051 2052 2053 2054 2055 2056 2057 2058 2059 2060 2061 2062 2063 2064 2065 2066 2067 2068 2069 2070 2071 2072 2073 2074 2075 2076 2077 2078 2079 2080 2081 2082 2083 2084 2085 2086 2087 2088 2089 2090 2091 2092 2093 2094 2095 2096 2097 2098 2099 2100



\$470 million terminal redevelopment, adding deep-water berths & expanding on-dock rail



# Maintenance buildings

100  
Centennial  
Celebration



Port of  
**LONG BEACH**  
The Green Port

1913 1914 1915 1916 1917 1918 1919 1920 1921 1922 1923 1924 1925 1926 1927 1928 1929 1930 1931 1932 1933 1934 1935 1936 1937 1938 1939 1940 1941 1942 1943 1944 1945 1946 1947 1948 1949 1950 1951 1952 1953 1954 1955 1956 1957 1958 1959 1960 1961 1962 1963 1964 1965 1966 1967 1968 1969 1970 1971 1972 1973 1974 1975 1976 1977 1978 1979 1980 1981 1982 1983 1984 1985 1986 1987 1988 1989 1990 1991 1992 1993 1994 1995 1996 1997 1998 1999 2000 2001 2002 2003 2004 2005 2006 2007 2008 2009 2010 2011 2012



W.E. O'Neil Construction is building a \$48.5 million maintenance complex to be completed early 2012



# Admin building

100  
Centennial  
Celebration



FTR International has a \$45.9 million contract to build a three-story admin facility, opening end of 2011.

# Slip fill

100  
Centennial  
Celebration



Port of  
**LONG BEACH**  
The Green Port



As part of a \$40 million dredging project, 12 acres is being filled at Pier G – to be completed by early 2013



# Expanded rail yard

100  
Centennial  
Celebration



Port of  
**LONG BEACH**  
The Green Port



Under a \$30.7 million contract, Excel Paving is building an expanded intermodal rail yard – to be completed in spring 2012.



# Gerald Desmond Bridge

100  
Centennial  
Celebration



Port of  
**LONG BEACH**  
The Green Port



Replacing obsolete bridge with a \$950 million replacement to improve traffic flow and safety

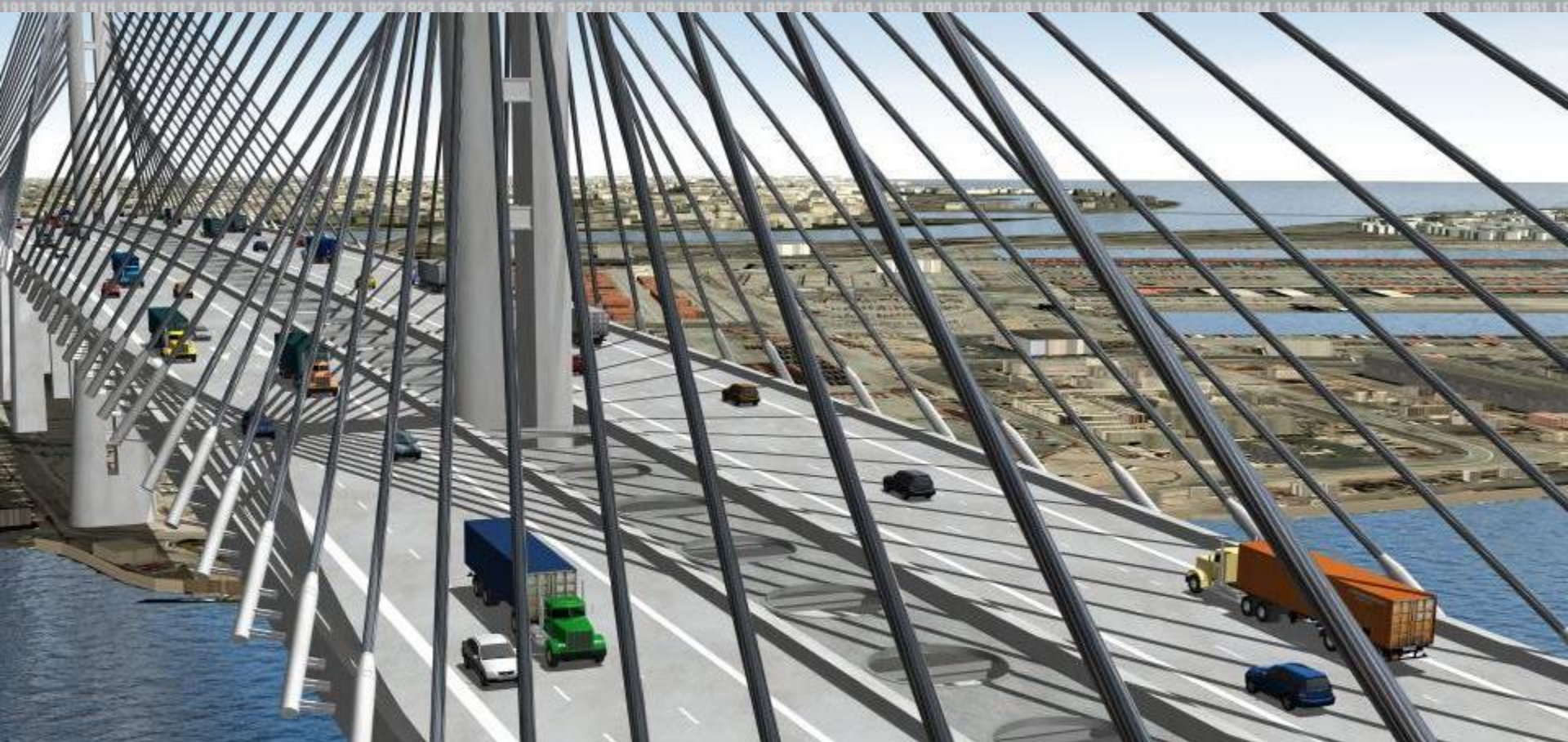


# Design build

100  
Centennial  
Celebration



Port of  
**LONG BEACH**  
The Green Port



RFP for estimated \$675 million design-build contract  
issued September 2, 2011.



# Maintenance move

100  
Centennial  
Celebration



Port of  
**LONG BEACH**  
The Green Port

1913 1914 1915 1916 1917 1918 1919 1920 1921 1922 1923 1924 1925 1926 1927 1928 1929 1930 1931 1932 1933 1934 1935 1936 1937 1938 1939 1940 1941 1942 1943 1944 1945 1946 1947 1948 1949 1950 1951 1952 1953 1954 1955 1956 1957 1958 1959 1960 1961 1962 1963 1964 1965 1966 1967 1968 1969 1970 1971 1972 1973 1974 1975 1976 1977 1978 1979 1980 1981 1982 1983 1984 1985 1986 1987 1988 1989 1990 1991 1992 1993 1994 1995 1996 1997 1998 1999 2000 2001 2002 2003 2004 2005 2006 2007 2008 2009 2010 2011 2012 2013 2014 2015 2016 2017 2018 2019 2020 2021 2022 2023 2024 2025 2026 2027 2028 2029 2030



To make way for new bridge, maintenance facilities are being relocated; construction contract is out for bids.



# Middle Harbor

100  
Centennial  
Celebration



Port of  
**LONG BEACH**  
The Green Port

1913 1914 1915 1916 1917 1918 1919 1920 1921 1922 1923 1924 1925 1926 1927 1928 1929 1930 1931 1932 1933 1934 1935 1936 1937 1938 1939 1940 1941 1942 1943 1944 1945 1946 1947 1948 1949 1950 1951



**\$1.2 billion Middle Harbor Project will improve terminal efficiency, cut pollution 50%, create 14,000 new jobs**



# First major contract

100  
Centennial  
Celebration



Port of  
**LONG BEACH**  
The Green Port



Manson and Connolly Pacific awarded \$123.3 million contract for Phase 1 dredging, wharf construction.



# Pier S terminal project

100  
Centennial  
Celebration



Port of  
**LONG BEACH**  
The Green Port

1913 1914 1915 1916 1917 1918 1919 1920 1921 1922 1923 1924 1925 1926 1927 1928 1929 1930 1931 1932 1933 1934 1935 1936 1937 1938 1939 1940 1941 1942 1943 1944 1945 1946 1947 1948 1949 1950 1951



Draft EIR released September 16<sup>th</sup> on this \$650 million green shipping terminal which will support 35,000 new jobs. Public meetings were held on October 5<sup>th</sup> and October 13<sup>th</sup>.



# Rail Enhancements

100  
Centennial  
Celebration



Port of  
**LONG BEACH**  
The Green Port

1913 1914 1915 1916 1917 1918 1919 1920 1921 1922 1923 1924 1925 1926 1927 1928 1929 1930 1931 1932 1933 1934 1935 1936 1937 1938 1939 1940 1941 1942 1943 1944 1945 1946 1947 1948 1949 1950 1951



\$1.1 Billion in projects to expand rail yard, realign tracks to support increased on-dock rail operations



# Off Terminal Rail Projects

100  
Centennial  
Celebration



Port of  
**LONG BEACH**  
The Green Port

## \$1.1 Billion in projects

Thenard Jct.  
Realignment  
(ACTA)

Cerritos Channel  
Rail Bridge  
(ACTA)

Expanded  
Control Points  
(POLB)

Closure of Reeves  
Crossing  
(POLB/POLA)

Reeves Grade  
Separation  
(POLB/POLA)

Navy Mole  
Storage  
Yard  
(POLB)

Wye Track  
Realignment  
(POLB)

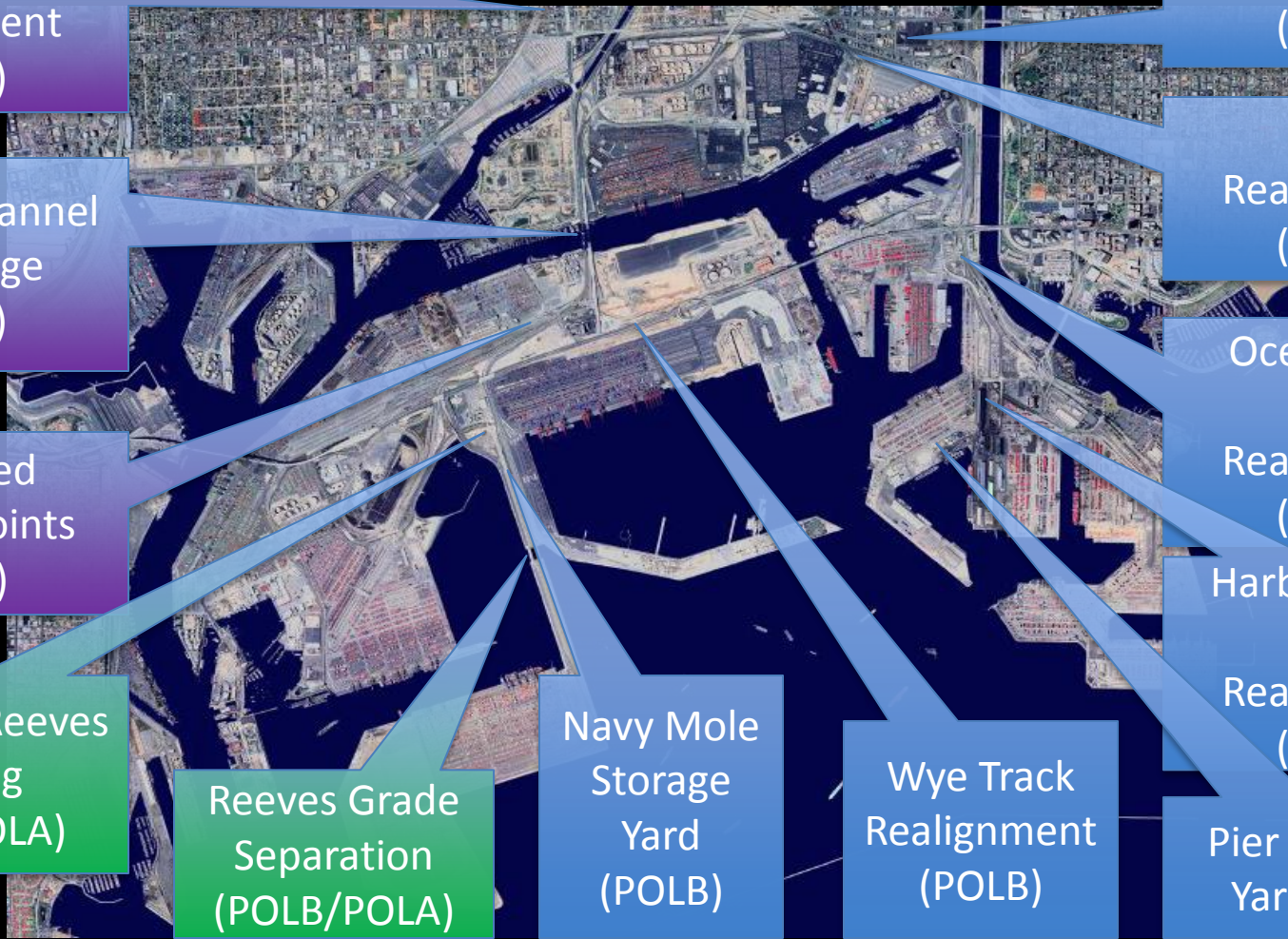
Pier B Rail Yard  
(POLB)

Pier B  
Realignment  
(POLB)

Ocean Blvd.  
Track  
Realignment  
(POLB)

Harbor Scenic  
Track  
Realignment  
(POLB)

Pier F Support  
Yard (POLB)





# Shore-to-Ship Power

100  
Centennial  
Celebration



Ships switch off engines and shift to shore power to improve air quality



# Port-wide plug-in

100  
Centennial  
Celebration



Port of  
**LONG BEACH**  
The Green Port

- \$200 million investment
- By 2014, 50% of container ships will plug in to shore power
- By 2020, 80% of container ships will plug in to shore power



- Current Port of Long Beach plug-in berths
- Berths being converted
- Upcoming berths to be converted





Port of  
**LONG BEACH**  
The Green Port



US Army Corps  
of Engineers

# Harbor Deepening Project





# Questions?

100  
Centennial  
Celebration



1913 1914 1915 1916 1917 1918 1919 1920 1921 1922 1923 1924 1925 1926 1927 1928 1929 1930 1931 1932 1933 1934 1935 1936 1937 1938 1939 1940 1941 1942 1943 1944 1945 1946 1947 1948 1949 1950 1951 1952

For more information, go to  
[www.polb.com](http://www.polb.com)