

I-710 Oversight Committee Meeting *January 30,*

SHOEMAKER BRIDGE REPLACEMENT PROJECT



Proposed I-710 Early Action Project

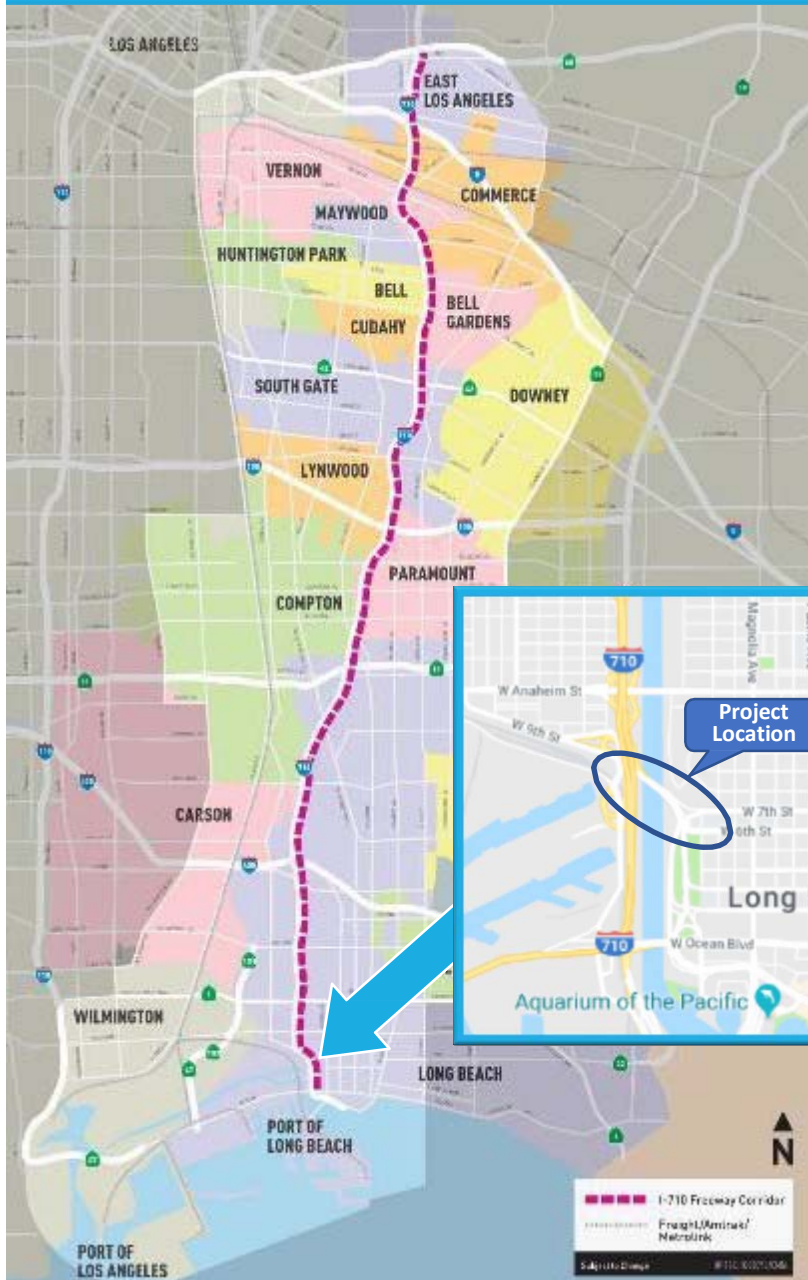
**CITY OF
LONGBEACH**


GATEWAY CITIES
COUNCIL OF GOVERNMENTS

 **Metro**

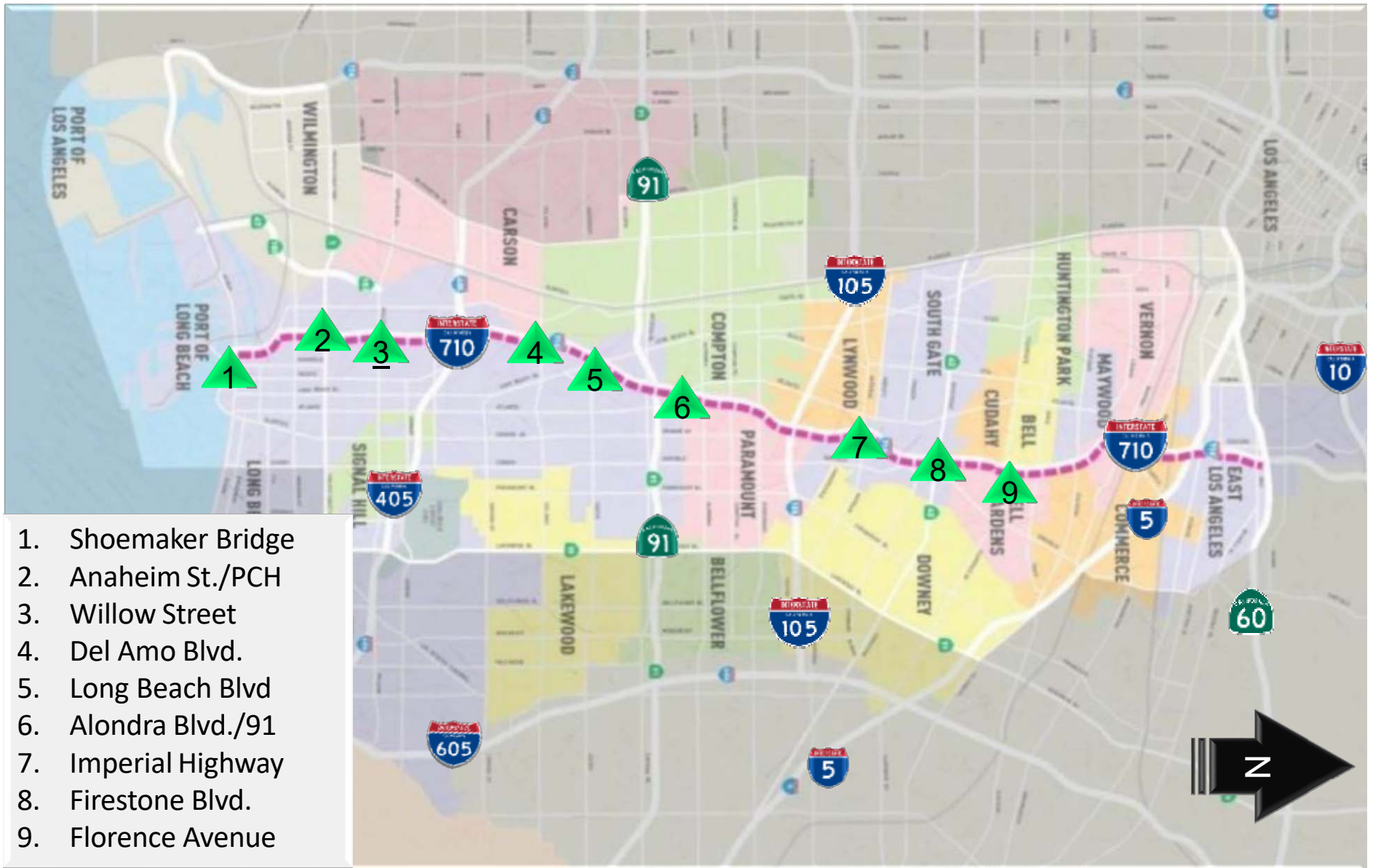

Caltrans

Shoemaker Bridge Replacement - Overview

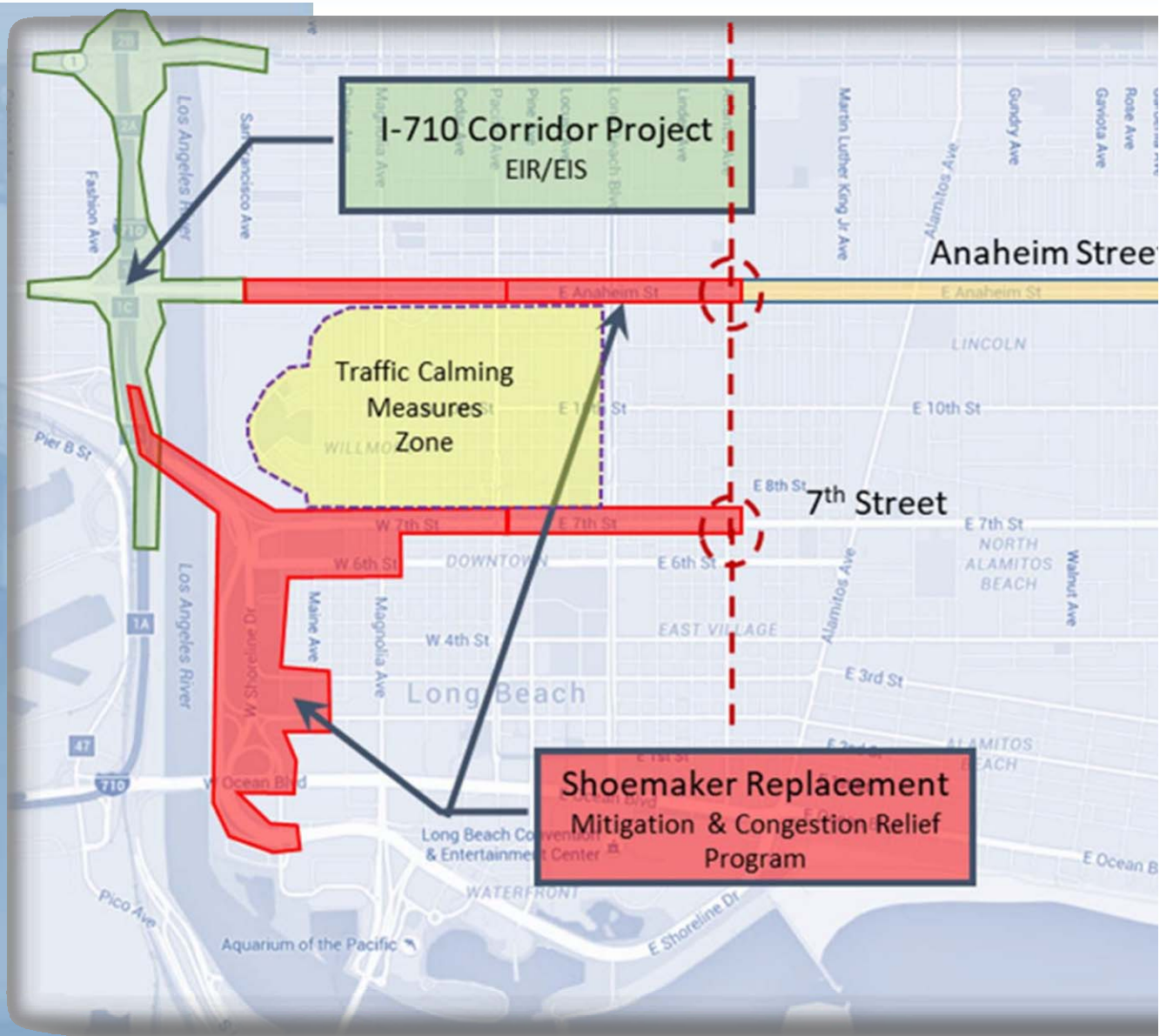


- The Project is located between Downtown Long Beach and the I-710 Freeway
- The existing bridge was built in 1954 and has structural and operational deficiencies
- The Project is compatible with existing and proposed I-710 improvements and will:
 - ✓ Improve safety and operations for all modes of transportation
 - ✓ Improve connectivity from downtown to surrounding communities and adjacent park areas
- The Project will be funded with LA Metro Freeway Funds

Early Action Projects - Freeway



Shoemaker Bridge Replacement – Project Limits

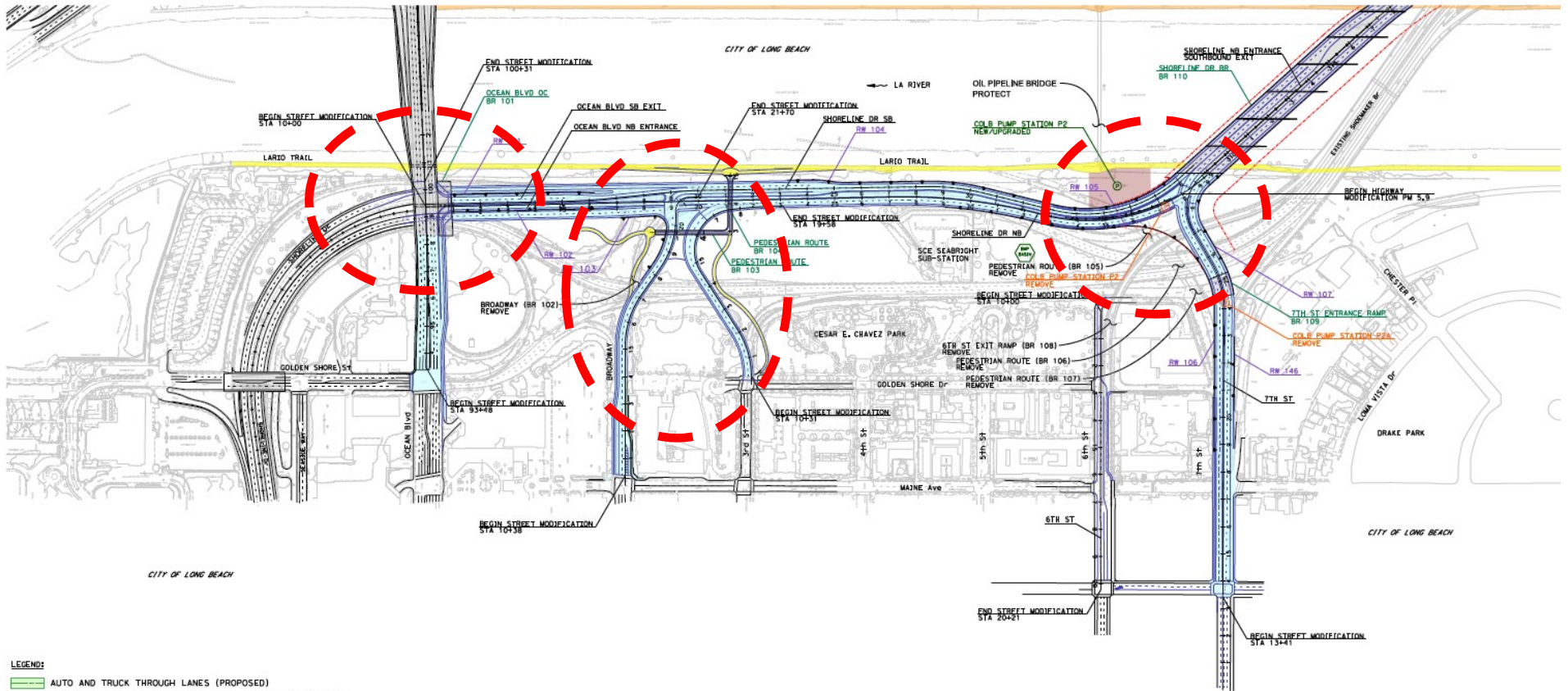


Shoemaker Bridge Replacement – Project Need



- Provide a structure and highway facility that meets current structural and geometric design standards
- Improve safety and operations for all modes of transportation
- Provide a facility that is compatible with planned freeway improvements and downtown development projects
- Improve connectivity from the downtown area to surrounding communities and adjacent recreational use areas

Caltrans Geometric Design Option



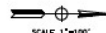
- LEGEND:**
- AUTO AND TRUCK THROUGH LANES (PROPOSED)
 - AUXILIARY AND RAMP LANES AND LOCAL STREETS (PROPOSED)
 - TRUCK LANES (PROPOSED)
 - EXISTING LANES AND STREETS TO CONFORM
 - RIGHT OF WAY (POST CONSTRUCTION)
 - GRADE SEPARATION STRUCTURE
 - MAINTENANCE PATH/SERVICE AREA/TRAIL (PROPOSED)
 - EXISTING MAINTENANCE PATH
 - MULTI-USE TRAILS
 - RETAINING WALL (PROPOSED)
 - SOUND WALL (PROPOSED)
 - SCREEN WALL (PROPOSED)
 - EXISTING SOUND WALL
 - RAILROAD (PROPOSED)

ID	INCH	LENGTH	USE
101	26"	530'	ARTERIAL
102	29"	830'	ARTERIAL
103	13"	410'	ARTERIAL
104	30"	1,490'	LOCAL
105	30"	1,060'	LOCAL
106	26"	570'	LOCAL
107	30"	420'	LOCAL
146	3"	270'	LOCAL

ROADWAY ALIGNMENTS	
ALIGNMENT NAME	DISPOSITION
OC1 OCEAN BLVD	WIDEN
OC2 OCEAN BLVD	WIDEN
S1 SHORELINE DRIVE	REALIGN/REPLACE
S2 SHORELINE DRIVE	REALIGN/REPLACE
7TH 7TH STREET	REALIGN/REPLACE
8W BROADWAY	REALIGN/REPLACE
3RD 3RD STREET	REALIGN/REPLACE
6TH 6TH STREET	MODIFY
S Shoreline Drive	REALIGN/REPLACE

GRADE SEPARATION STRUCTURES				
ID	STRUCTURE NAME	CATEGORY	DISPOSITION	AREA (SF)
101	Ocean Blvd (over Shoreline Dr)	OVERCROSSING	NEW	6,700
102	Broadway (over NB Shoreline Dr)	OVERCROSSING	REMOVE	5,800
103	Pedestrian Route (over Broadway/3rd St)	PED	NEW	4,300
104	Pedestrian Route (over Shoreline Dr)	PED	NEW	3,500
105	Pedestrian Route (under service road)	PED	REMOVE	2,800
106	Pedestrian Route (under Shoreline Dr)	PED	REMOVE	5,000
107	Pedestrian Route (under pump station access)	PED	REMOVE	1,900
108	6th St Exit Ramp (over Shoreline Dr)	INTERCHANGE	REMOVE	31,400
109	7th St Entrance Ramp (over service area)	INTERCHANGE	REPLACE	5,900
110	Shoreline Dr (over LA River) "Snoozer"	BRIDGE	REPLACE	163,600
111	9th St (over SB Route 710)	INTERCHANGE	REMOVE	26,500
112	10th St (over Route 710)	INTERCHANGE	REMOVE	55,400

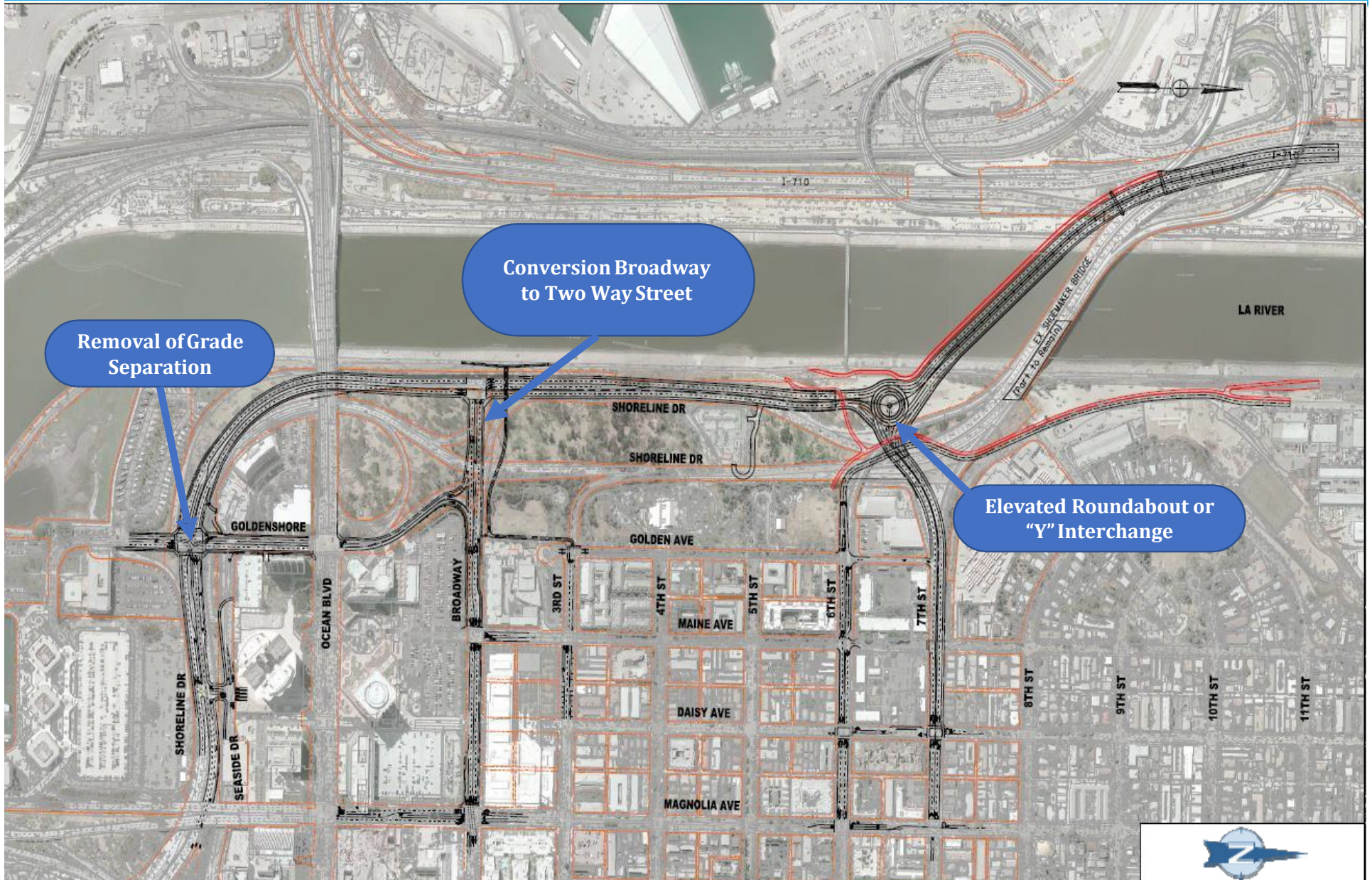
- NOTES**
- See Geometric Review Drawings for alignment details, including profiles and super-elevation diagrams, typical cross sections, and non-standard features.
 - See Right of Way Map for right-of-way requirements and parcel data.
 - See Hydrology Study and Storm Water Data Report for drainage and water treatment details.
 - See Utility Maps and Reports for alignment and disposition of existing utilities.
 - See Flood Control Facilities Report for disposition of major channel structures and facilities.
 - In addition to the State of California, any jurisdiction include the County of Los Angeles and the City of Long Beach.



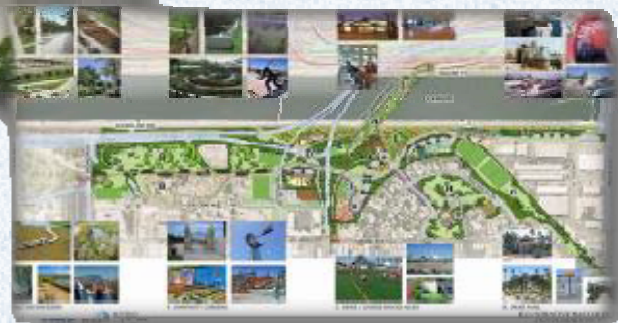
**I-710 CORRIDOR
SHORELINE/7TH INTERCHANGE
ALTERNATIVE 5C**

COMPOSITE MAP

City of Long Beach Design Option



SHOEMAKER BRIDGE REPLACEMENT PROJECT



CITY OF
LONG BEACH



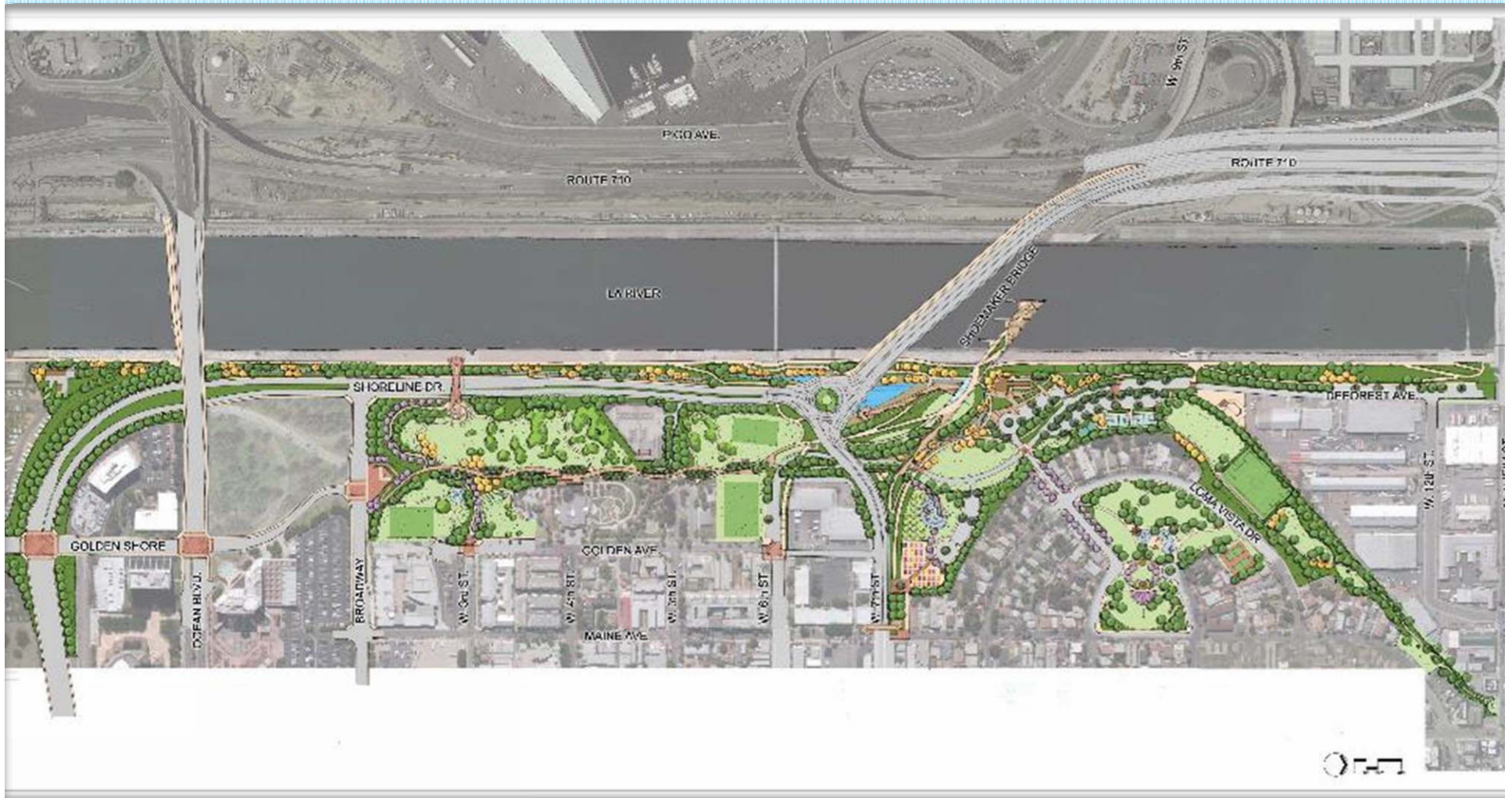
Existing Conditions



Making More Usable Space

Shoemaker Bridge Replacement – Integration Plan

- The Project will provide opportunity for improvements to Cesar Chavez Park



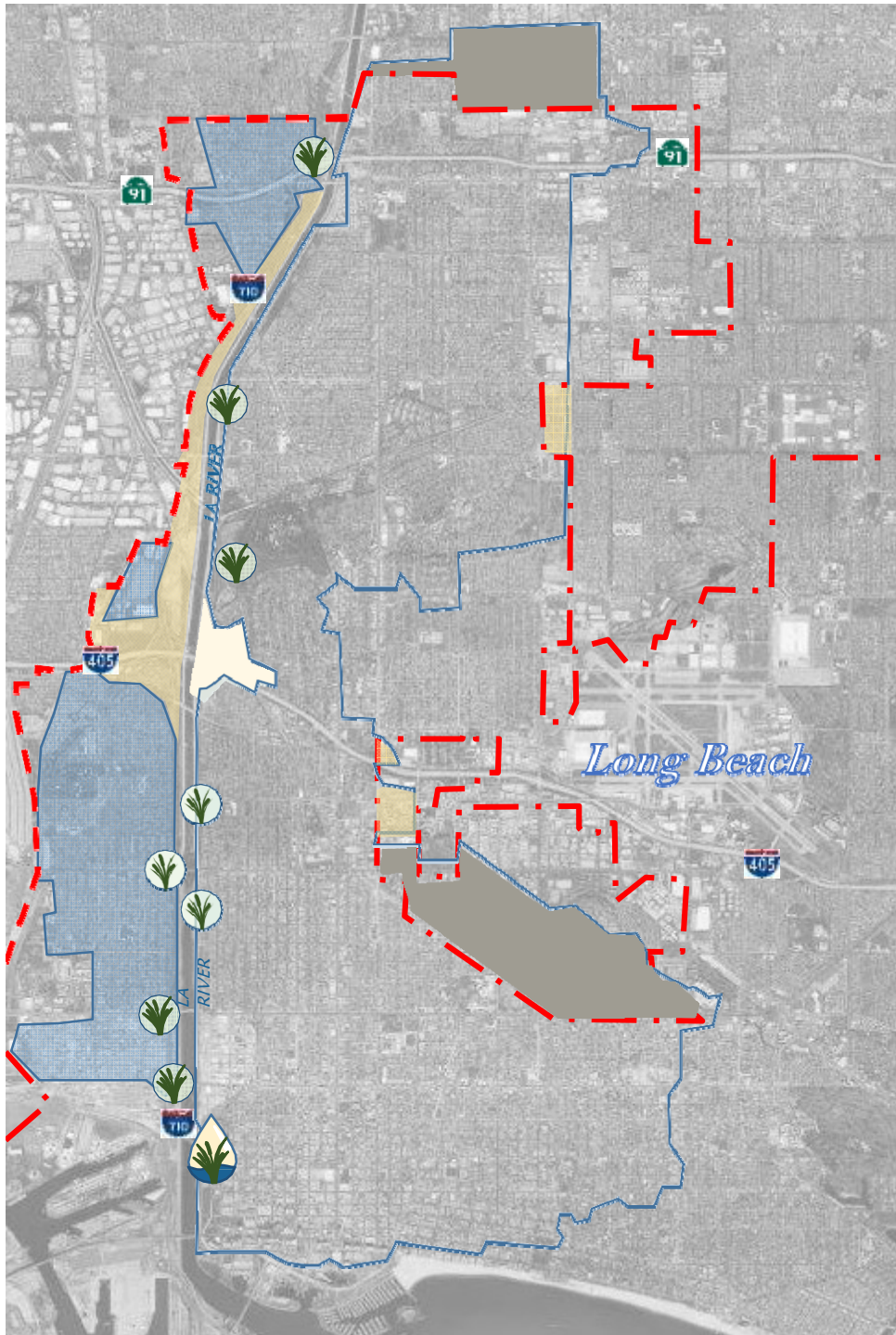
Shoemaker Bridge Replacement – Active Transportation

- The project includes active transportation improvements to facilitate pedestrian and bicycle circulation



LB-MUST Project

Project Location



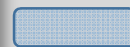
Legend



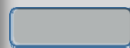
LB-MUST Facility and Wetlands



Future Potential Greening



Tributary Watershed Basins



Tributary Watershed Basins (Regional Partners)



City Boundary



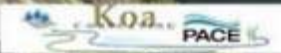
CITY OF
LONG BEACH

LB-MUST Project – *Future Possibilities of Urban Watershed Greening and Wetlands*



AERIAL VIEW FROM NORTH

CITY OF LONG BEACH



CITY OF
LONG BEACH 14

LB-MUST Project – *Future Possibilities of Urban Watershed Greening and Wetlands*

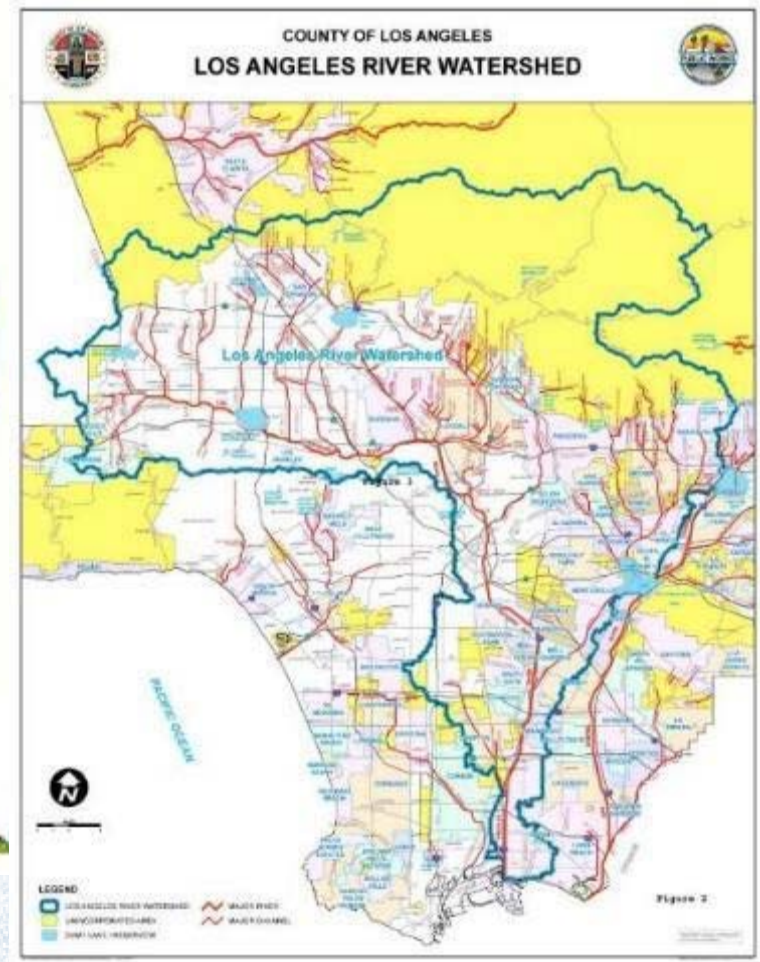


LA River Master Plan and Urban Greening

Goals of the Urban Greening Master Plan



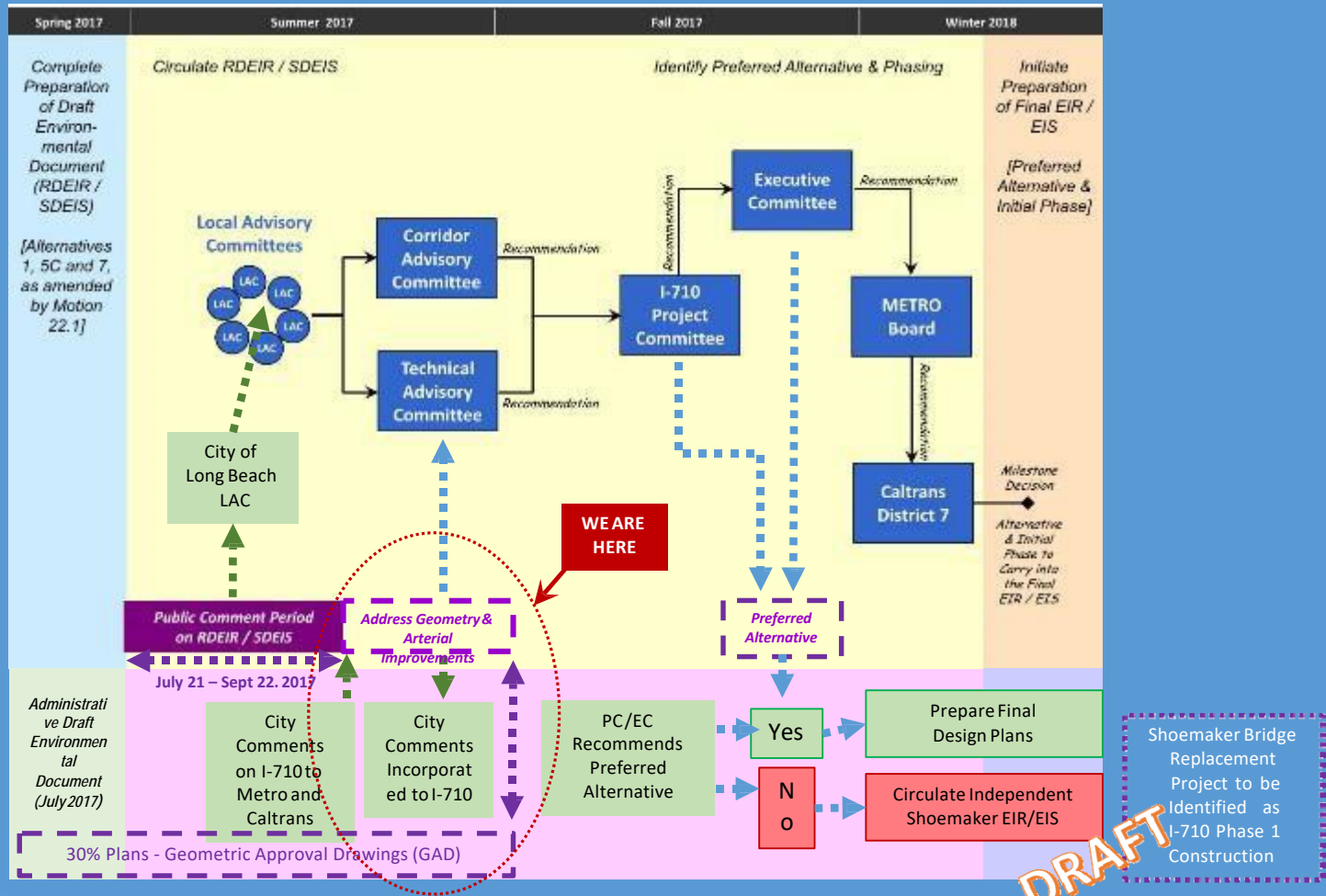
Gateway Cities & Rivers Urban Greening Master Plan



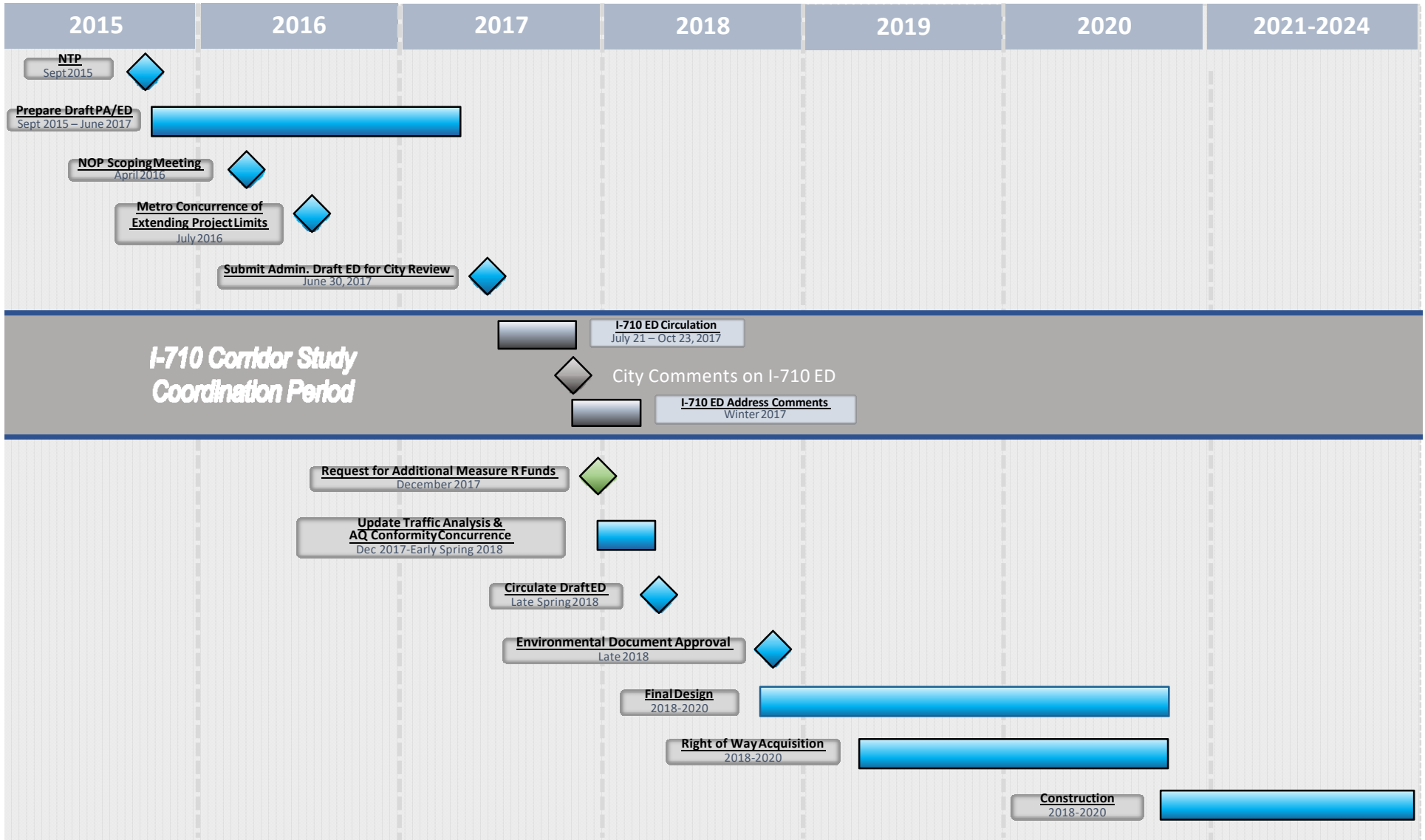
I-710 Corridor Study & Shoemaker Bridge Replacement Project Environmental Documents

I-710 Corridor Study EIR/EIS
(Provided by Metro)

Shoemaker Bridge Replacement EIR/EA



Shoemaker Bridge Replacement – Schedule Summary



I-710 Oversight Committee Meeting *January 30,*

SHOEMAKER BRIDGE REPLACEMENT PROJECT



Proposed I-710 Early Action Project

**CITY OF
LONGBEACH**


GATEWAY CITIES
COUNCIL OF GOVERNMENTS


Metro


Caltrans