

# MAC Report

## October 2022

SUBMITTED BY THE MARINE BUREAU



## TABLE OF CONTENTS

1. Marinas and Waterways
2. Beaches and Waterways
3. Marine Maintenance Work Order Graphs
4. Pump Out Inspection Report
5. Tide Table



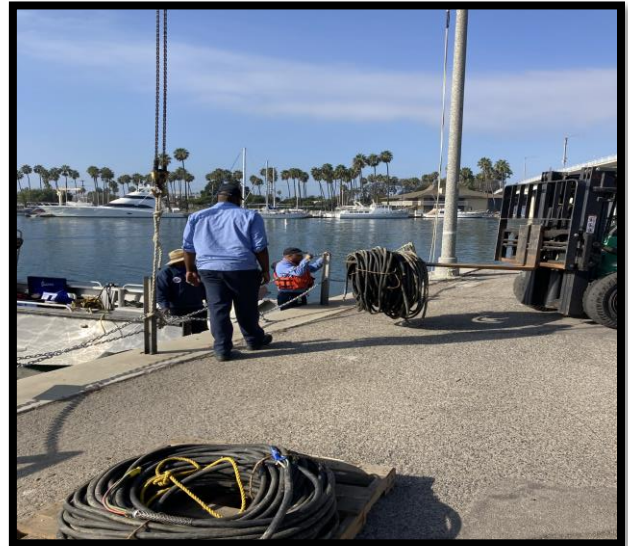
## MARINAS AND WATERWAYS

### Accomplishments

- ❖ Staff have completed remodeling the women's restrooms at the Harbor Master Office.

### Projects in the works

- ❖ Staff is in the process of replacing all the damaged and missing signs throughout the Long Beach Shoreline Marina. Staff has already replaced all the "Gangway" and "No Visitor" signs. 90% completed
- ❖ Staff is in the process of retrofitting the existing twelve (12) booster pumps from a wet system to a dry fire suppression system in the Long Beach Shoreline Marina. 80% completed.
- ❖ Staff is in the process of making improvements to the Alamitos Bay Marina office including painting the interior of the building. 50% completed
- ❖ Staff is in the process of inspecting and tightening all the loose fingers throughout the Long Beach Shoreline Marina. 40% completed
- ❖ Staff is in the process of inspecting and replacing all the damaged gangway water supply lines throughout Long Beach Shoreline Marina, as needed. 45% completed
- ❖ Staff is in the process of repairing the restroom plumbing throughout Long Beach Shoreline Marina. 35% completed
- ❖ Staff is in the process of repairing concrete fingers throughout Long Beach Shoreline Marina. 10% completed
- ❖ Staff is in the process of replacing exterior doors at the Belmont Pool office. 50% completed
- ❖ Staff is in the process of painting memorial benches in ABM. 50% completed
- ❖ Staff is in the process of installing two isolation valves for all 31 Gangway's in Shoreline Marina. 5% completed
- ❖ Staff is in the process of repairing seawall on Bayshore. 85% complete





## MARINAS AND WATERWAYS

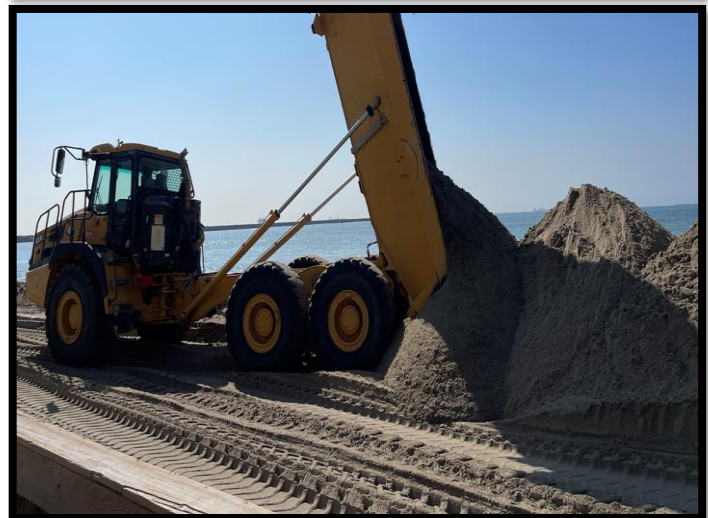
- ❖ Staff is in the process of replacing all electrical components (breakers, receptacles, etc.) inside the pedestals located throughout Shoreline & Rainbow Harbor Marinas. 25% completed
- ❖ Staff is in the process of installing two isolation valves for all 33 Gangway's in Shoreline Marina. 85% completed
- ❖ Staff is in the process of retrofitting all pedestals inside of Rainbow Harbor Marina (SHM 1,2,3,4 docks 8 & 9) 35% completed
- ❖ Staff is in the process of painting curbs and guard post throughout DTM. 85% completed
- ❖ Staff is in the process of cleaning buoys in ABM and DTM Marina's. 80% completed
- ❖ Staff is in the process of remodeling the women's restrooms at Harbor Master Office. 90% complete
- ❖ Staff is in the process of pressure washing and painting all memorial benches as well as trash receptacles at Bluff Park & Mole Road. 40% complete
- ❖ Staff is in the process of assembling the Christmas Tree's in the Bay for the upcoming Christmas season. 50% complete
- ❖ Staff is in the process of painting the hallway at the Harbor Master Office 75% complete



## **BEACHES AND WATERWAYS**

### **Accomplishments**

- ❖ Beach Maintenance staff removed over 42.3 tons of trash and debris from the beaches and inner bays.
- ❖ Beach Maintenance staff removed trash and debris from the beach waterline.
- ❖ Beach Maintenance staff serviced 220 trash receptacles during the month of October.
- ❖ Beach Maintenance staff hauled 16,000 cubic yards of sand to build up and maintained the berm on the East Peninsula beach between 62<sup>nd</sup> – 72<sup>nd</sup> place.
- ❖ Beach Maintenance staff swept the bike/pedestrian path.
- ❖ Beach Maintenance staff conducted weekly cleanups of several homeless encampments throughout the beach areas.
- ❖ Beach Maintenance staff raked and cleaned throughout beach areas.
- ❖ Beach Maintenance staff conducted weed abatement around the public showers and walkways throughout the beach areas.
- ❖ Beach Maintenance staff conducted sand removal from the sidewalks.
- ❖ Queensway Bay staff conducted a cleaning of all 60 basket filters in the Rainbow Lagoon; six days per week, twice per day. Staff replaces and cleans all 60 baskets once a month.
- ❖ Queensway Bay staff conducted daily removal of water borne debris and algae in the Rainbow Lagoon, Rainbow Harbor Marina and Long Beach Shoreline Marina using hand nets.
- ❖ Queensway Bay staff removed trash from docks, four times per week.
- ❖ Queensway Bay staff conducted monthly inspections on all docks throughout Rainbow Harbor Marina.
- ❖ Queensway Bay staff serviced all sewage pumps on the commercial docks 1-6.





## **BEACHES AND WATERWAYS**

- ❖ Queensway Bay staff conducted weekly PEH encampment posting and cleanups.
- ❖ Queensway Bay staff completed 7 Go Long Beach request for the month of October.
- ❖ Queensway Bay staff conducted daily graffiti removal of the entire Rainbow Harbor area, including the Queensway bridge bike path and Queen Mary Park.
- ❖ Queensway Bay staff performed routine maintenance on the Wave and Dolphin Fountain twice per week.
- ❖ QWB crew installed floating storm debris gate system at Rainbow Harbor entrance.
- ❖ Queensway Bay staff cleaned Shoreline Aquatic Park sand area.
- ❖ QWB crew and PW electrician repaired electrical and lighting wires in Esplanade
- ❖ QWB crew cleaned and removed graffiti on terminal sea wall.

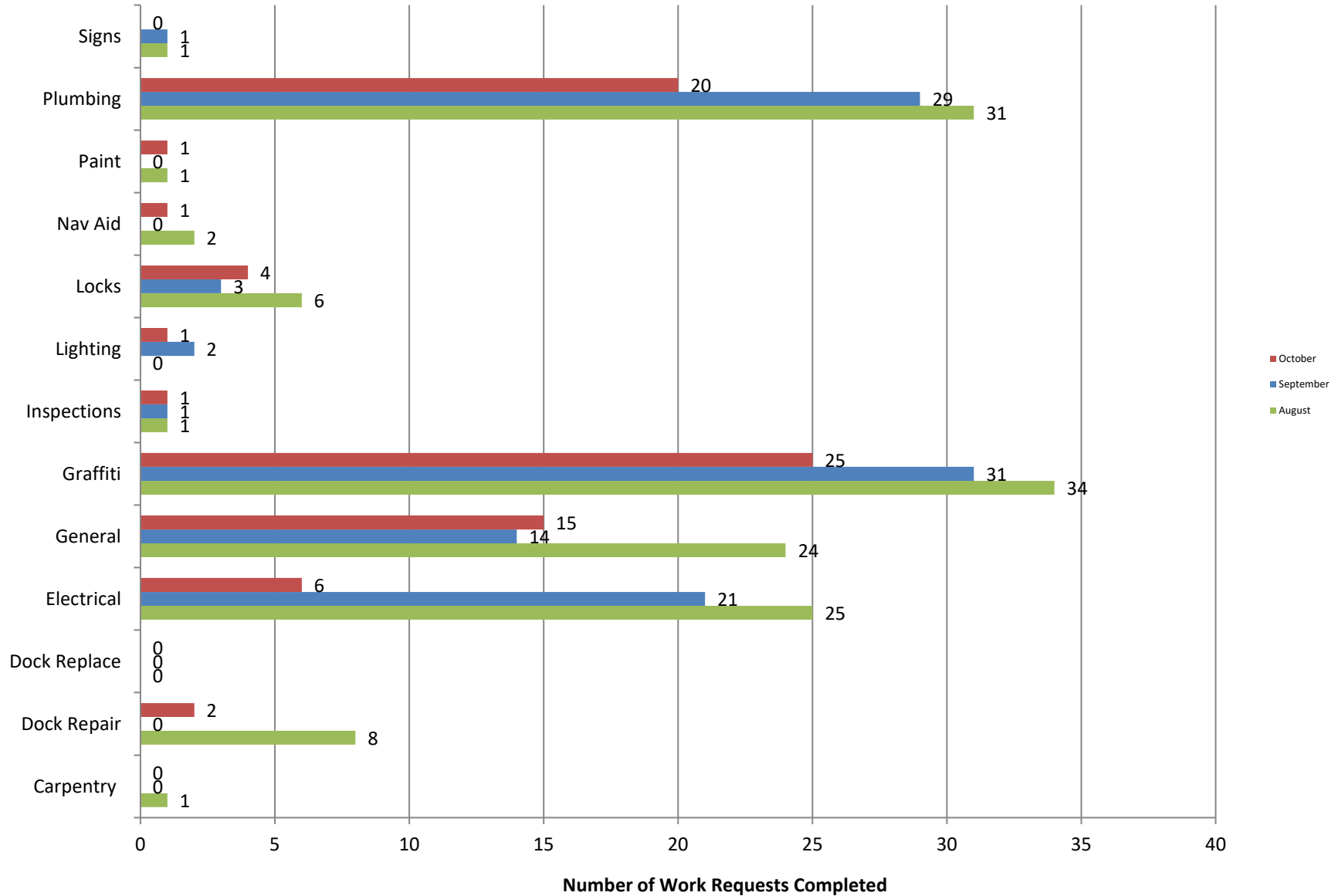
### **Projects in the works**

- ❖ Beach Maintenance staff is continuing the process of rebuilding sections of the peninsula where erosion occurs.
- ❖ QWB crew scheduled to coordinate additional repairs to Rainbow Lagoon's saltwater fill system



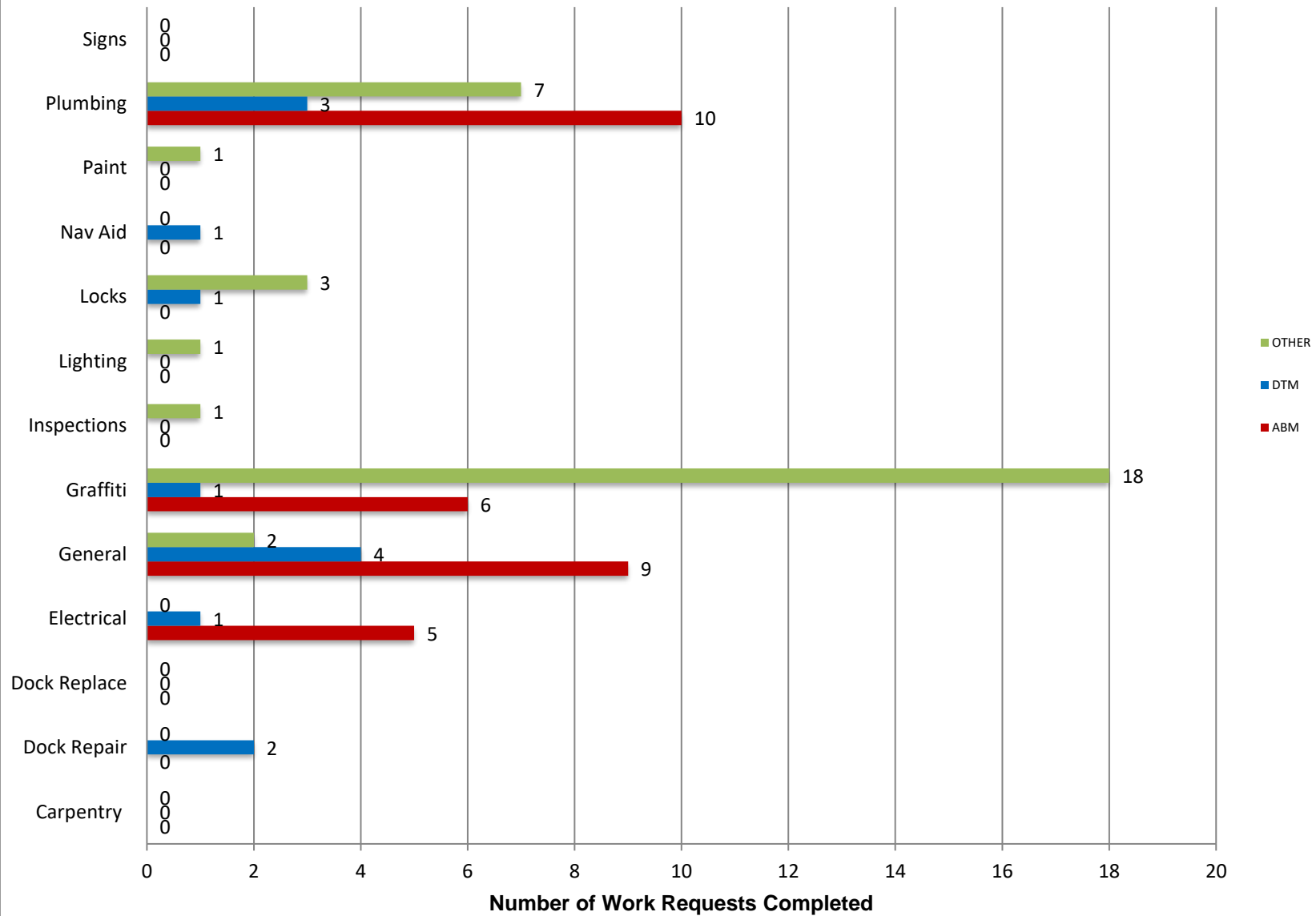
# Marine Maintenance

## Work Request Completed by Month



# Marine Maintenance

## Work Requests Completed by Location





## PUMPOUT INSPECTION REPORT

Pump Out Location	Inspection Date			
	10/06/22	10/13/22	10/20/22	10/27/22
Gwy A, A	W	W	W	W
Gwy A, B	W	W	W	W
Parker's Public Dock, A	NW	NW	NW	NW
Parker's Public Dock, B	NW	NW	NW	NW
Parker's Public Dock, C	N/A	W	W	W
Dock 9	NW	NW	NW	NW
Basin 6 South	W	N/A	W	W
Davie's Launch Ramp, A	W	W	W	W
Station 31, A	N/A	W	W	W
Station 31, B	N/A	W	W	W
Station 21	W	W	W	W
Basin 1, Gwy 2	W	W	W	W
Basin 1, Gwy 4	W	W	W	W
Basin 2, Gwy 8	W	W	W	W
Basin 2, Gwy 11	W	W	W	W
Basin 3, Gwy 16	W	W	W	W
Basin 3, Gwy 19	W	W	W	W
Basin 4, Gwy 28	W	W	W	W
Basin 4, Gwy 31	W	W	W	W
Basin 5, Gwy 33	W	W	W	W
Basin 5, Gwy 34	W	W	W	W

KEY
W = Working
NW = Not Working
N/A = Not Applicable

N 33° 46.3' / W 118° 12.6'

