

LBWD S-25 Sewer Lift Station Project (SC-0367)

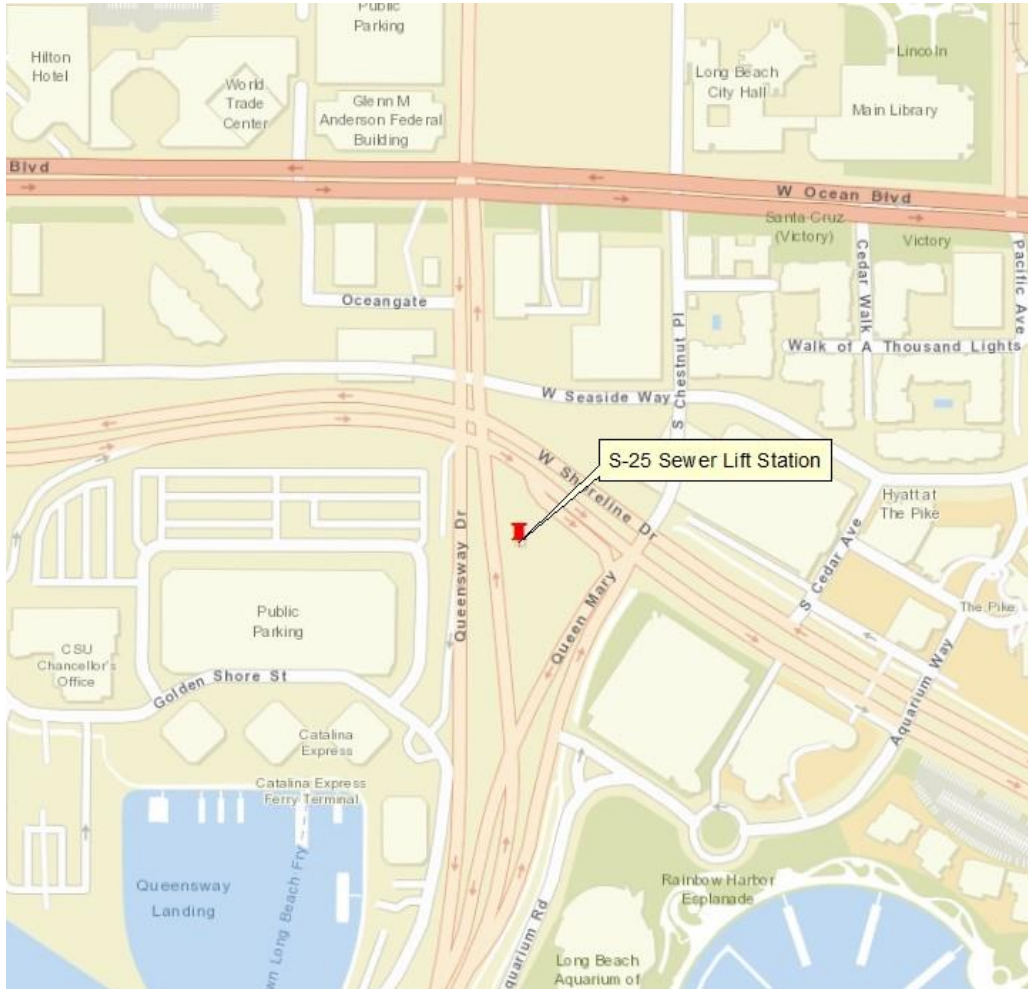
Board of Water Commissioners

April 14, 2022



Long Beach Water
Exceptional Water • Exceptional Service

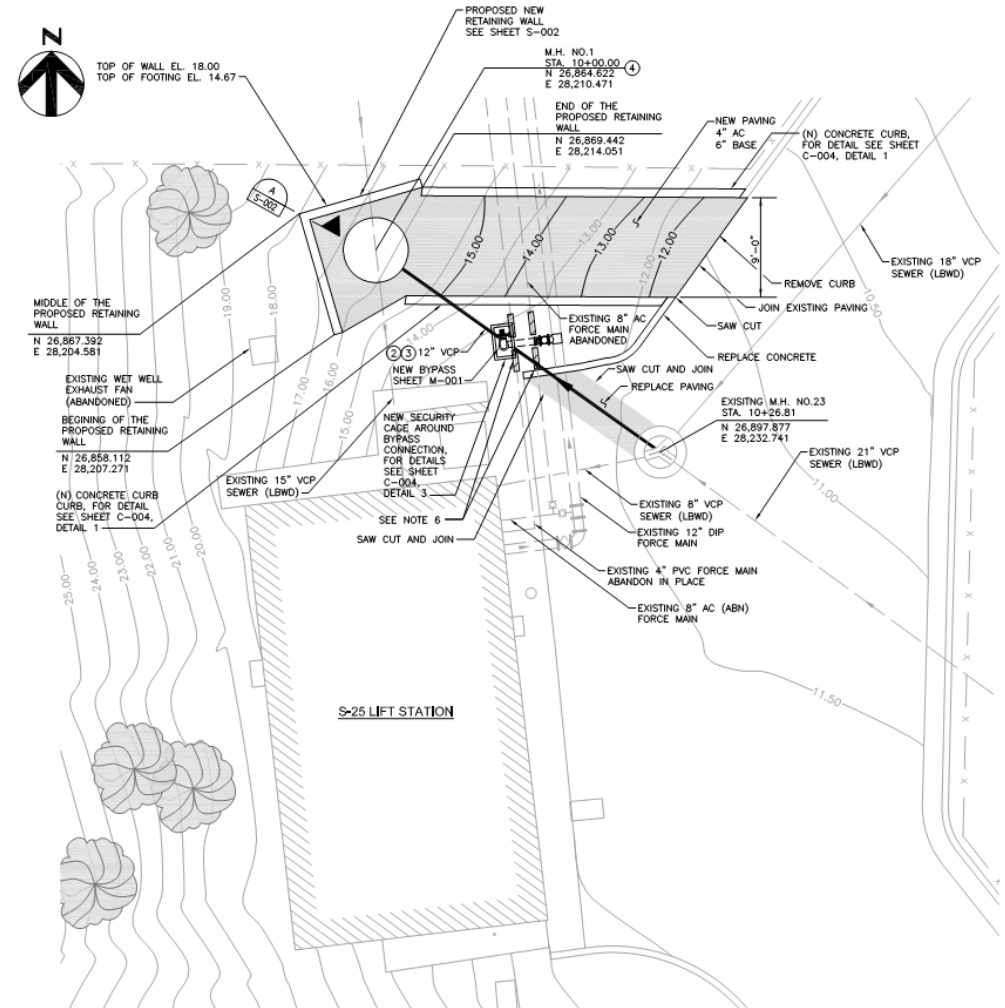
Background



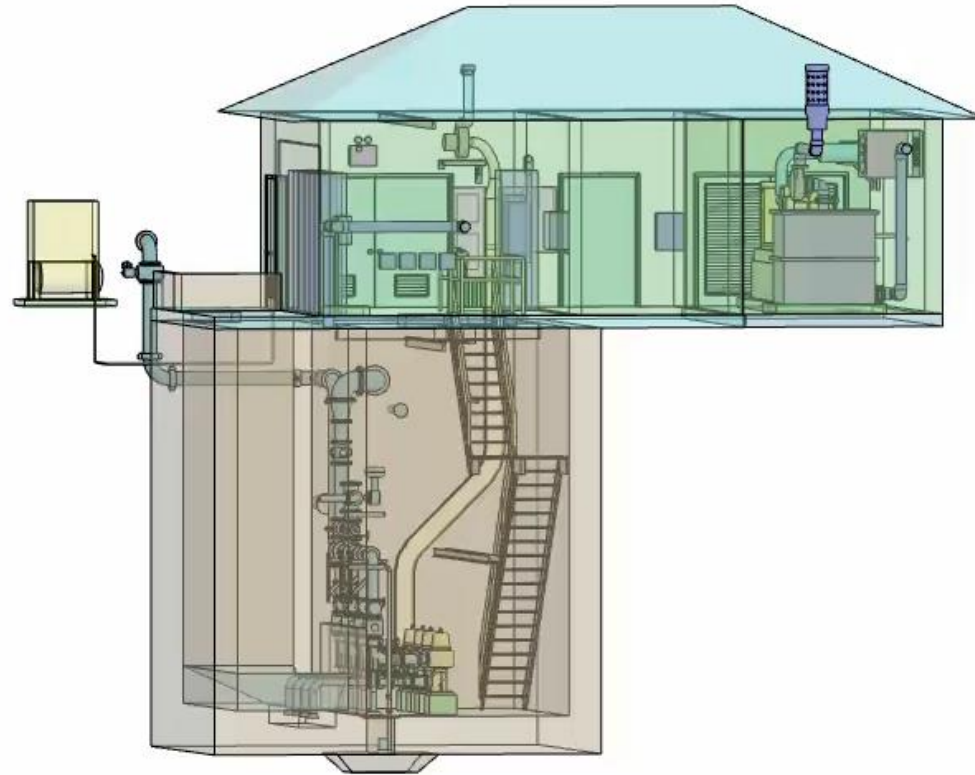
- Located at 420 Shoreline Dr.
- One of the 26 sewer lift stations in the LBWD's sewer system
- Identified as a station for rehabilitation due to surcharging upstream pipes

Scope of Work

- Replacement or rehabilitation of the following:
 - Mechanical equipment, such as pumps, valves and pipes
 - Electrical upgrade, such as MCC, generator, conduits and wires
 - Instrumentation and control, such as flow meter, pump control, level transmitter
 - Civil site improvement, such as a new manhole and paving



3D Render of Improvements



Recommendation (Construction)

- Adopt Specifications WD-40-22 for S-25 Sewer Lift Station Rehabilitation Project (SC-0367) and authorize the General Manager to sign a construction contract with Pyramid Building & Engineering, Inc., in the amount of \$3,241,350.

Recommendation (CMS)

- Authorize the General Manager to execute an Agreement with JIG Consultants to provide Construction Management & Inspection Services for the S-25 Sewer Lift Station Rehabilitation (SC-0367), in the amount not to exceed \$664,630.



Long Beach Water

Exceptional Water • Exceptional Service