

City of Long Beach Urban Design Element July 2015

URBAN
DESIGN **element**
City of Long Beach General Plan
June 2015



creating livable environments

LONG BEACH
DEVELOPMENT SERVICES
BUILDING A BETTER LONG BEACH



Planning Commission Study Session
July 2, 2015





Long Beach 2030

General Plan 2030 Update

- Land Use Element
- Mobility Element
- **Urban Design Element**
- Economic Development
- Community Values
- Environmental Resources/Infrastructure

LONG BEACH
DEVELOPMENT SERVICES
BUILDING A BETTER LONG BEACH



What is Urban Design?

Physical Character of the Urban Environment

- Building form and character as it relates to the street and its surrounding
- Relationship between people and place
- Acknowledges the importance of historical context and existing development patterns
- Enhanced pedestrian spaces
- Connectivity and linkages





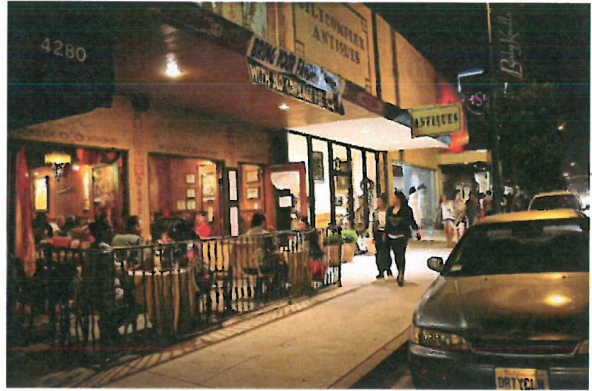
Great Places

- Improved Functionality
- Improved Appearance
- Improved Health and Sustainability
- Economic Resilience
- Social and Cultural Vitality and Diversity
- Public Art
- Signs and Wayfinding

LONG BEACH
DEVELOPMENT SERVICES
BUILDING A BETTER LONG BEACH



LONG BEACH, CALIFORNIA.

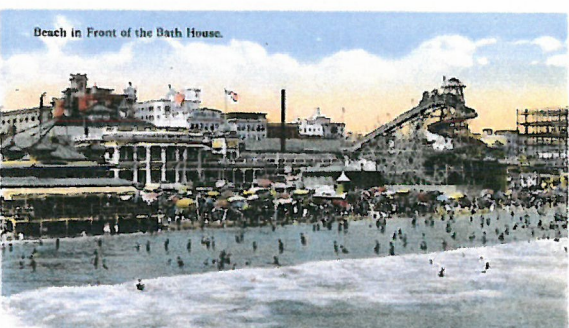
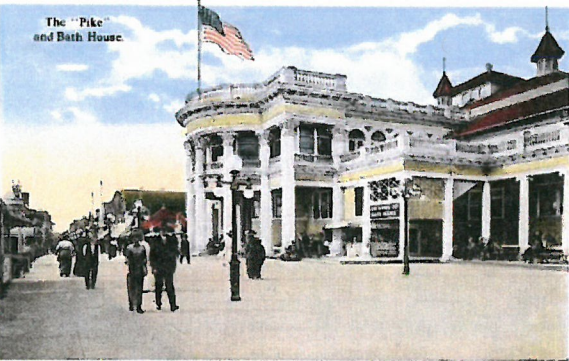


Understanding the Urban Fabric

Understanding the Past and the Place

The Fabric: Understanding the City Today

- Edges
- Thoroughfares
- Scenic Routers
- Trails
- Districts
- Centers
- Gateways
- Landmarks and Iconic Sites
- Water Features
- Topography and Views



LONG BEACH
DEVELOPMENT SERVICES
BUILDING A BETTER LONG BEACH





Urban Fabric

- Neighborhoods/Community Building Blocks
- Building Form and Development
- Compact Urban and Infill Development
- Natural Area and Parks to Built Area
- Scenic Routes and Iconic Sites

LONG BEACH
DEVELOPMENT SERVICES
BUILDING A BETTER LONG BEACH



PlaceTypes



Community Commercial Centers and Corridors



Industrial



Neo-Industrial



Single-Family Neighborhood



Multi-Family Neighborhood



Neighborhood-Serving Centers and Corridors, Mixed-Use, and Transit-Oriented Development



Regional-Serving Facility



Downtown



Waterfront



Open Space

LONG BEACH
DEVELOPMENT SERVICES
BUILDING A BETTER LONG BEACH



PlaceTypes Example

Neighborhood Serving Centers and Corridors, Mixed-Use, and Transit-Oriented Development

- Building Form and Character
- Development Patterns
- Entry/Gateway Elements
- Pedestrian Areas
- Access to Transit

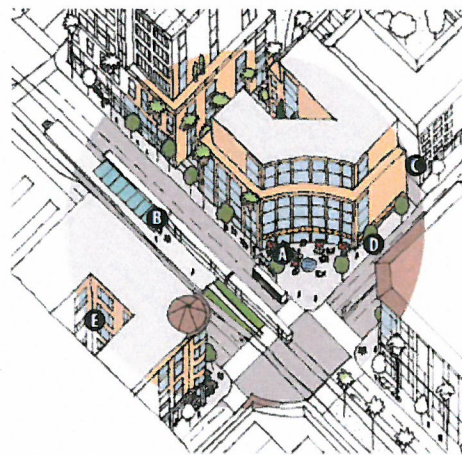
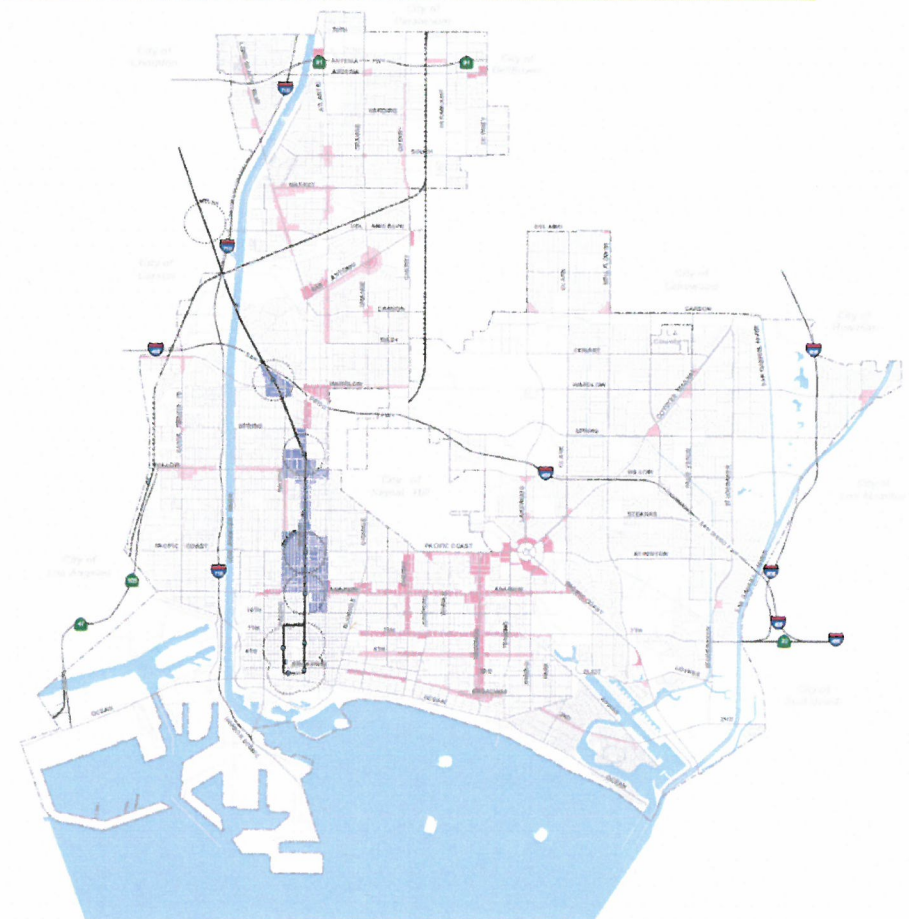
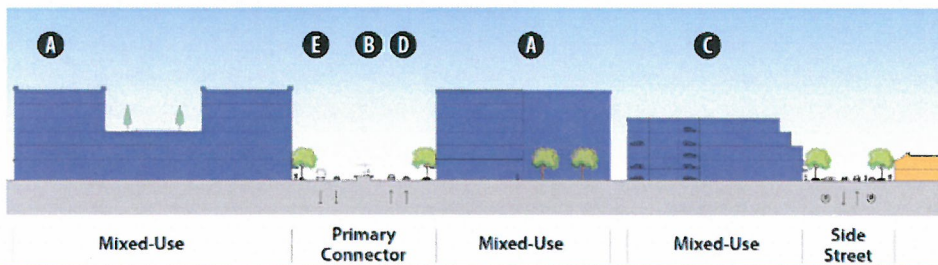


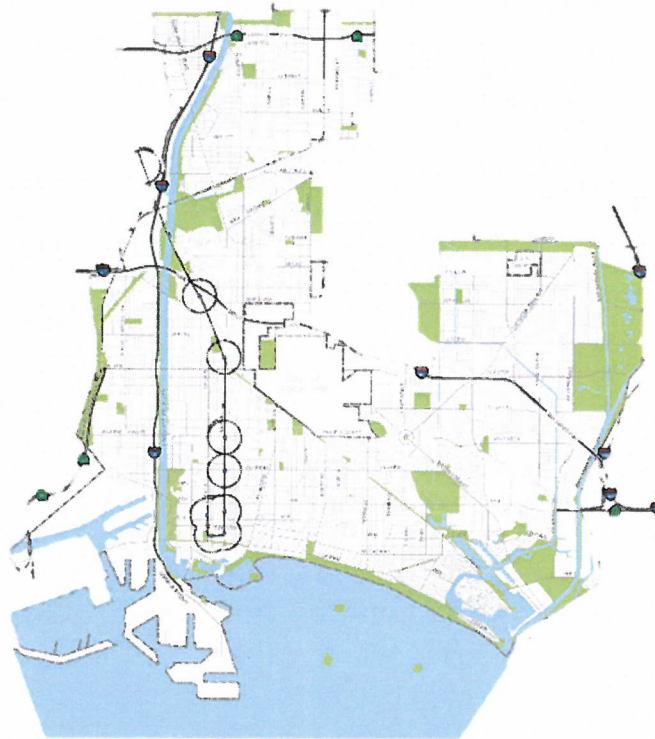
Figure UD-8: Transit-Oriented Development Bird's-Eye



Legend
 Place Types
 Neighborhood Serving Center or Corridor
 NSC-L - Neighborhood Serving Center or Corridor - Low
 NSC-M - Neighborhood Serving Center or Corridor - Low
 TOD - Transit-Oriented Development

LONG BEACH
 DEVELOPMENT SERVICES
 BUILDING A BETTER LONG BEACH





Public Spaces

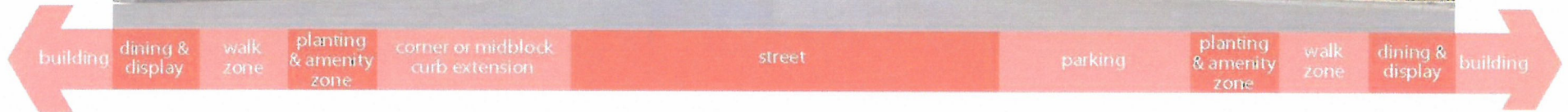
- Natural Areas, Watersheds, and Views
- Open Spaces and Parks
- Plazas, Squares, and Other Publicly Accessible Private Spaces
- Infill Public Space (Plazas, Community Gardens, Parks)
- Interstitial and Temporary Spaces

LONG BEACH
DEVELOPMENT SERVICES
BUILDING A BETTER LONG BEACH



Edges, Thoroughfares, and Corridors

- Interface Between Building and Streets
- Frontages
- Streets as the “Public Room”
- Street Types



LONG BEACH
DEVELOPMENT SERVICES
BUILDING A BETTER LONG BEACH



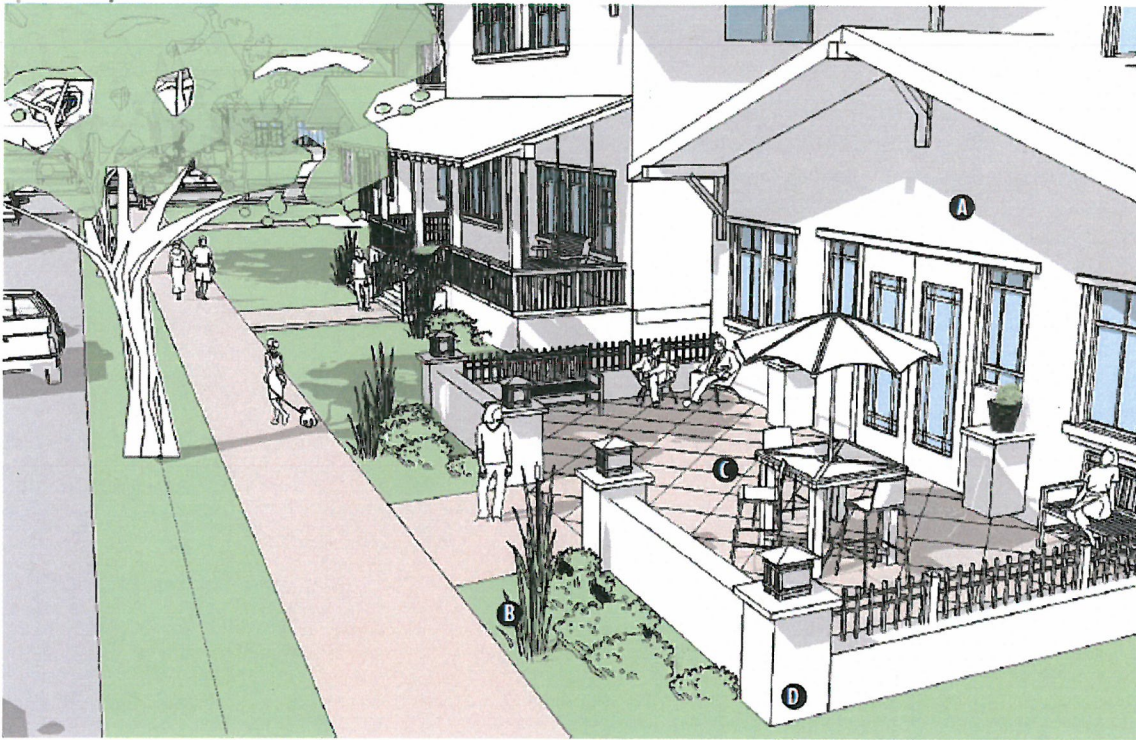


Figure UD-21: Terraces

Frontages

- Porches
- Stoops
- Terraces
- Forecourt
- Storefront
- Galleries
- Arcades

Restaurant utilizes terrace a dining space.



RECOMMENDATIONS FOR TERRACES

- A. Elevated
- B. Provides a buffer
- C. Suitable of public/private interaction
- D. Enclosed with short walls and fences

LONG BEACH
DEVELOPMENT SERVICES
BUILDING A BETTER LONG BEACH





Frontages

- Porches
- Stoops
- Terraces
- Forecourt
- Storefront
- Galleries
- Arcades

Figure UD-23: Storefront

Transparent glass, signage, awning, and plants create an inviting storefront.



RECOMMENDATIONS FOR STOREFRONTS

- A. Placed at property line
- B. Large transparent doors
- C. Often includes awnings
- D. Recessed entries
- E. Higher standard ceiling heights

LONG BEACH
DEVELOPMENT SERVICES
BUILDING A BETTER LONG BEACH





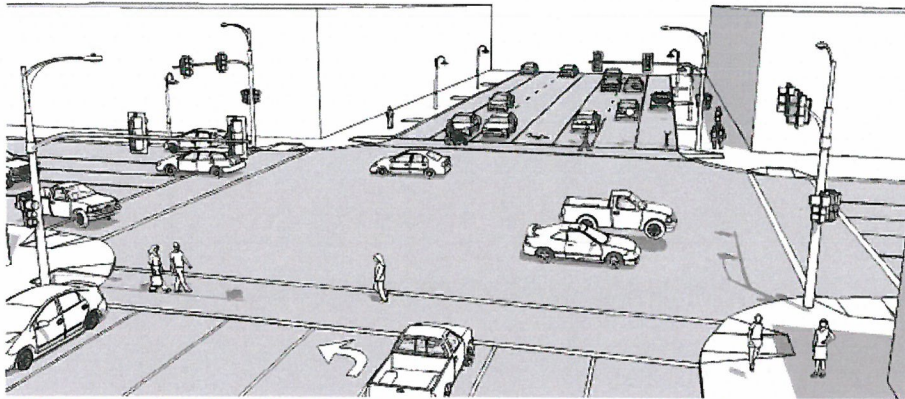
Street Types

- Vehicular Access
- Pedestrian Infrastructure
- Bicycle Infrastructure
- Transit Infrastructure
- Trees and Landscaping
- Parking Lots, Driveways, and Access Points

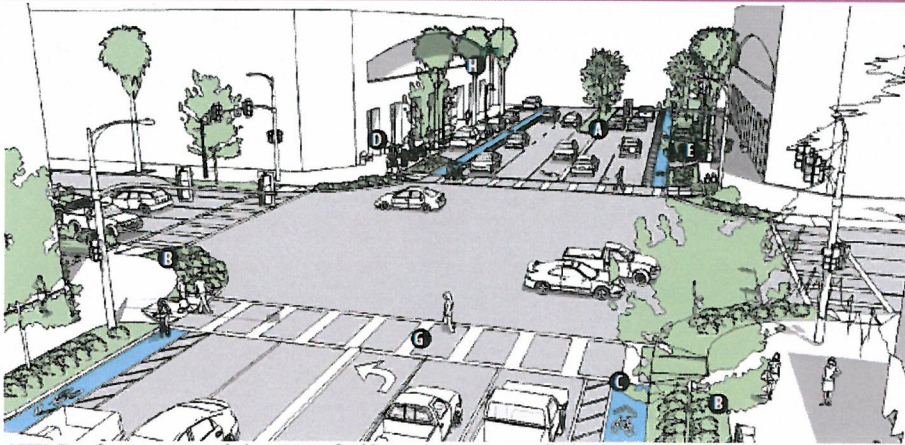
LONG BEACH
DEVELOPMENT SERVICES
BUILDING A BETTER LONG BEACH



Street Types – Regional, Boulevard, and Major Ave.



BEFORE: Streets are designed around an auto-oriented environment, transporting people, goods, and services from one community or neighborhood to another.



AFTER: Transform streets to include a variety of public spaces, creating a walkable environment.

RECOMMENDATIONS

- A. Planted median
- B. Sidewalk widening
- C. Cycle track
- D. Furnishings and landscape
- E. Bike corrals

Figure UD-28: Bicycle Corral with Cycle Track

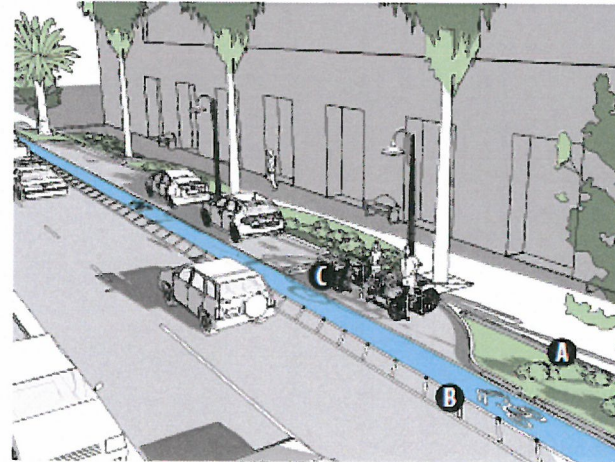
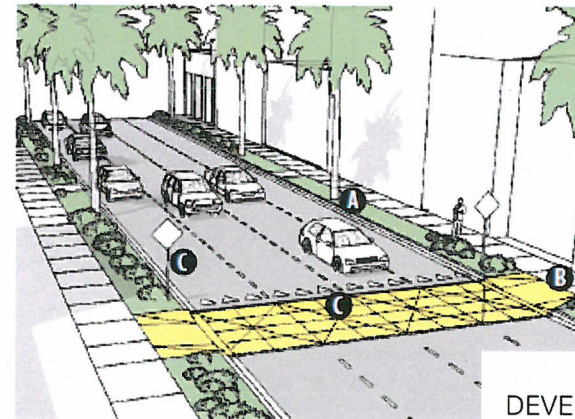


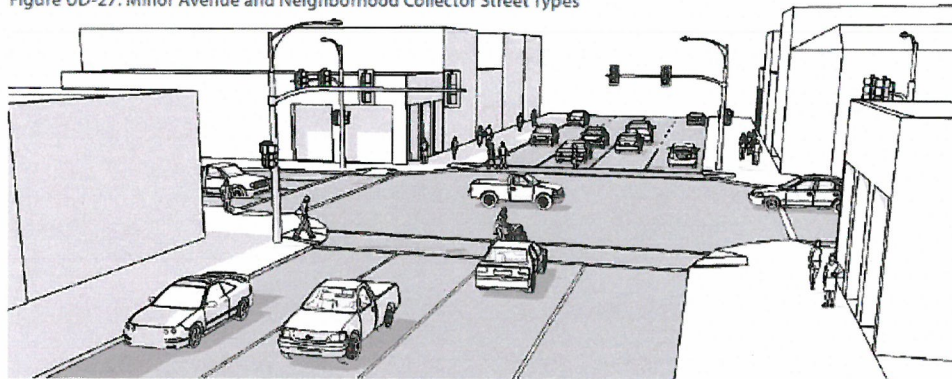
Figure UD-29: Mid-Block Crossing



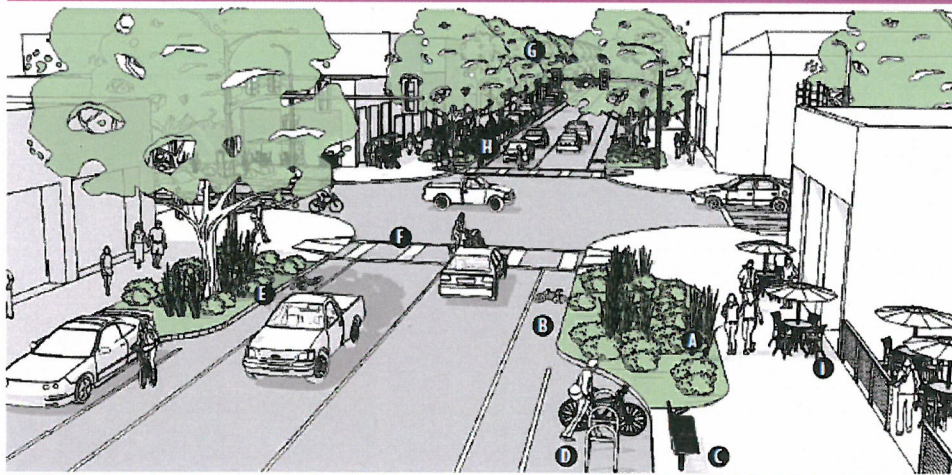
LONG BEACH
DEVELOPMENT SERVICES
BUILDING A BETTER LONG BEACH



Figure UD-27: Minor Avenue and Neighborhood Collector Street Types



BEFORE: Streets are designed to transport people, goods, and services to neighborhoods and serves as routes between neighborhoods.



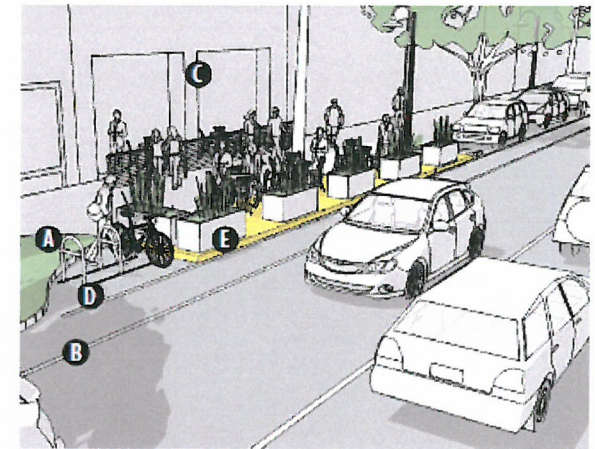
AFTER: Transform streets to include a variety of public spaces, creating a walkable and bicycle-friendly environment.

RECOMMENDATIONS

- A. Sidewalk widening
- B. Bike lanes
- C. Furnishings and landscaping
- D. Bike corrals
- E. Flow-through planters
- F. Enhanced crosswalks
- G. Street trees
- H. Parklets
- I. Café dining

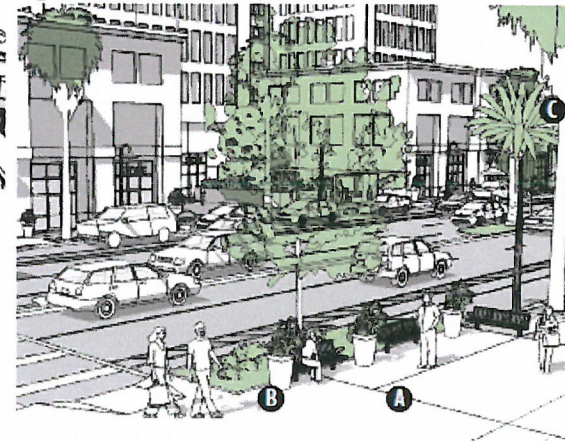
Street Type – Minor Ave. and Major Collector

Figure UD-31: Parklet



RECOMMENDATIONS

Figure UD-30: Bulbout

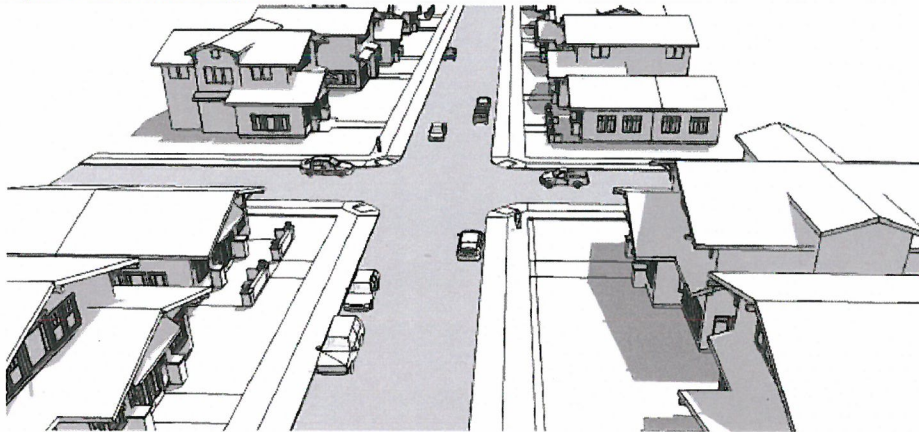


RECOMMENDATIONS

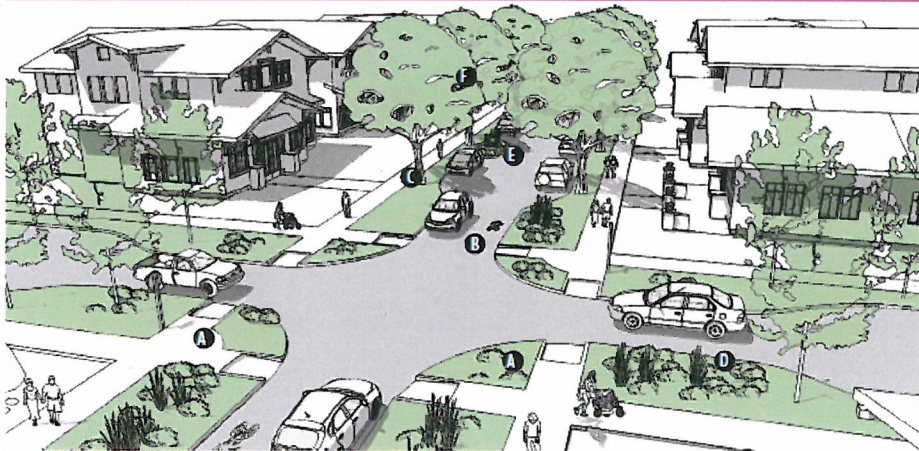
LONG BEACH
DEVELOPMENT SERVICES
BUILDING A BETTER LONG BEACH



Figure UD-32: Local Street Types



BEFORE: Streets are designed to provide access to individual residences. Streets are generally two lanes with on-street parking, parkways, and sidewalks.



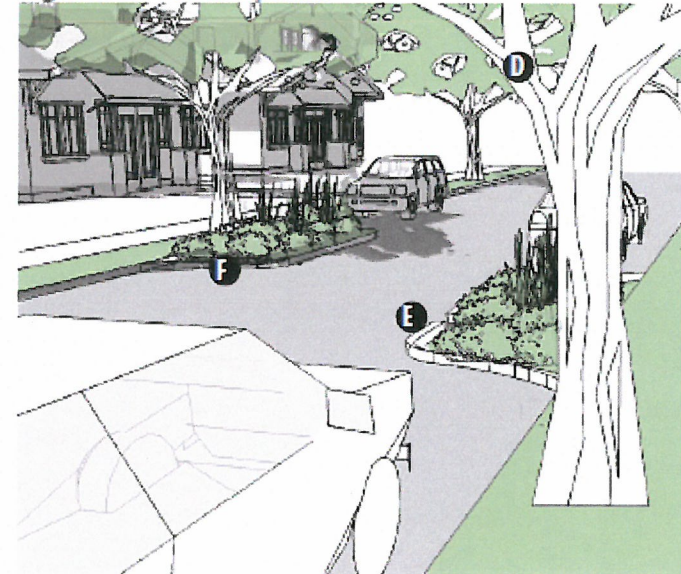
AFTER: Streets can be transformed to increase safety, walkability, and improved character.

RECOMMENDATIONS

- A. Bulbouts
- B. Bike routes
- C. Landscape parkways
- D. Planters
- E. Street trees

Street Type – Local Street

Figure UD-34: Pinchpoints



LONG BEACH
DEVELOPMENT SERVICES
BUILDING A BETTER LONG BEACH



Where we are....Where we're going

Land Use and Urban Design General Plan Elements

- Notice of Preparation (NOP) Issued May 18, 2015
 - NOP Comment Period ends June 16, 2015
- Public Scoping Meeting: May 27, 2015
- Planning Commission Study Session: July 2, 2015
- Draft EIR: Fall 2015; 45-Day Circulation
- Adoption: Winter 2015/Early 2016
 - Planning Commission
 - City Council

LONG BEACH
DEVELOPMENT SERVICES
BUILDING A BETTER LONG BEACH

