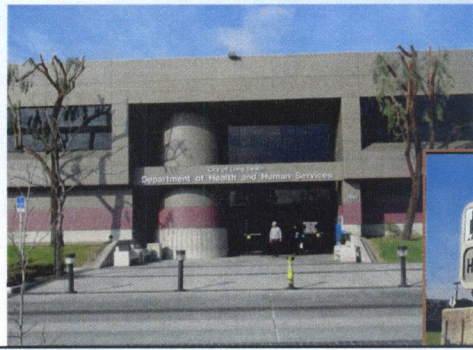
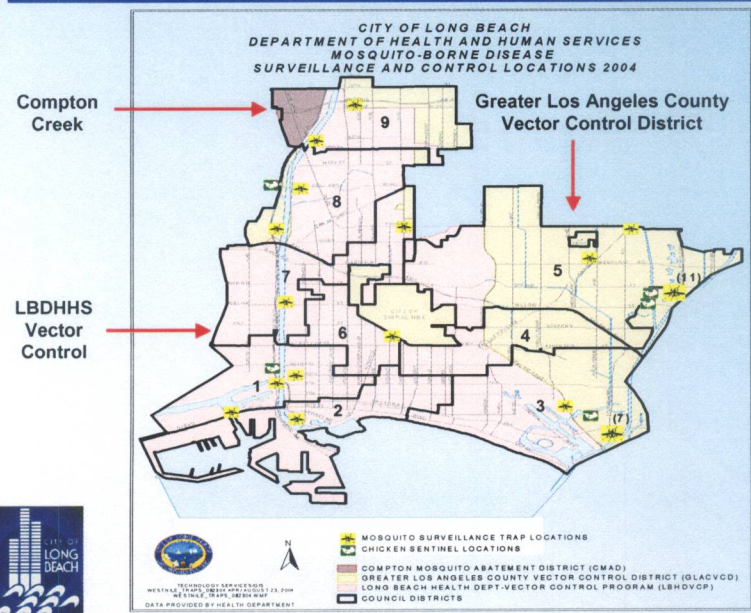


The Department of
 Health and Human Services
 Environmental Health Bureau
 Presents
**Responding to Challenges in the Fight Against
 West Nile Virus**
Working Together to Serve



Vector Districts Serving Long Beach



Mosquito Surveillance and Control in the City of Long Beach

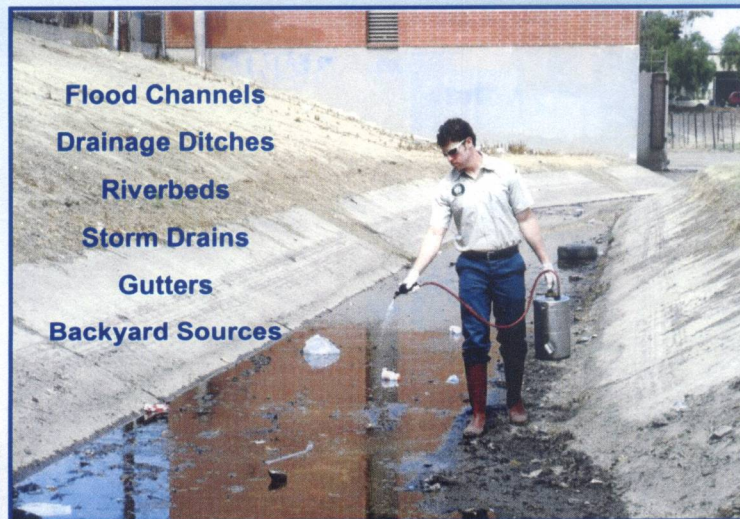
The approach to challenges created by West Nile Virus can be divided into three major categories:

1. Treatment and Control
2. Surveillance
3. Education and Outreach



Treatment and Control

Flood Channels
Drainage Ditches
Riverbeds
Storm Drains
Gutters
Backyard Sources



Flood Channels

- There are 383 miles of flood channels in the City of Long Beach. These channels are treated every 7 to 10 days.



Drainage Ditches

Freeway Drainage Ditch next to the 605 FWY



Riverbeds

The Los Angeles and San Gabriel Rivers are treated on a routine basis.



Riverbeds

Vector Control Specialist work closely with Los Angeles County Public Works to keep the water flowing in the riverbeds.



Storm Drain/Catch Basin

There are over 300 miles of Storm Drains in the City of Long Beach.



Underground Storm Drains

Underground Storm Drains are also inspected and treated.



Underground Storm Drains



Curbs and Gutters

Over 300 miles of residential curbs and gutters are treated every week.



Procedure for Standing Water Complaints

- All complaints of standing water are transferred to the Bureau of Environmental Health

- Complaints under the jurisdiction of LBDHHS are addressed by the Vector Control Program within three days. If necessary, the area is treated and added to the routine treatment route. A referrals are made to Public Works when necessary.

- Complaints under the jurisdiction of GLACVCD or Compton Creek are faxed to the appropriate agency. If the complaint is received from Public Works, a copy of the referral is included.

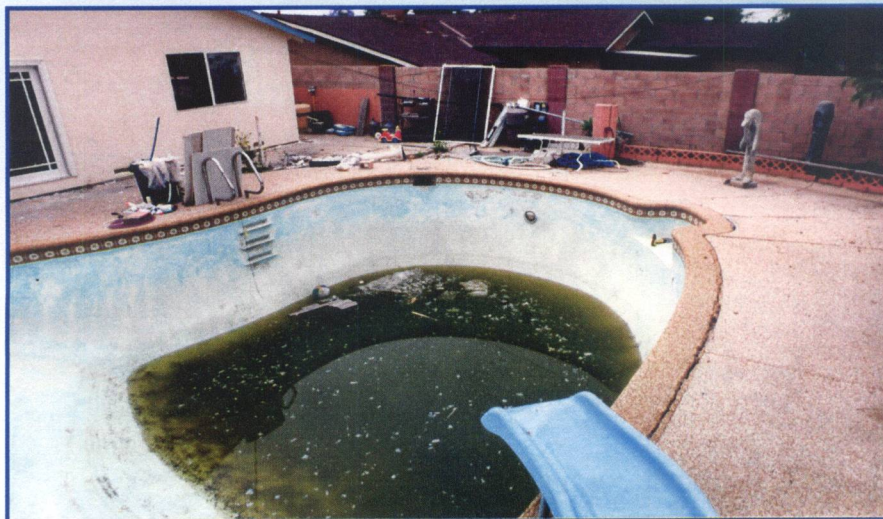
- A master log is maintained for standing water complaints.

The Vector Control Program has responded to 756 standing water complaints since July 12.



Backyard Sources

Vector Staff responded to over 39 complaints of dirty pools last month.



Backyard Sources

Old tires in a backyard can be a source of mosquito breeding.



Backyard Sources

Non-operating fountains and bird baths can be a source of breeding.



Surveillance

Birds, Mosquitoes and Chickens are monitored for WNV



Postings




Mosquito Trap



Warning Sign

Outreach and Education



WIPE OUT WEST NILE VIRUS

West Nile virus is a significant health threat. Transmitted by mosquitoes, the symptoms include headache, fever, fatigue and muscle aches. Most people recover, but the disease can be fatal. No vaccine exists, but there are steps you can take to protect your family.


Here's How You Can Make a Difference:

- ① Remove standing outdoor water.
- ② Change water in bird baths at least once a week.
- ② Mosquitoes breed in small, hidden places. Consider draining water from Birdbaths, Dog Bowls, Buckets, etc.
- ③ Avoid standing water in your yard.
- ③ Use mosquito coils, bug screens, and mosquito netting.
- ④ Wear long sleeves and pants outdoors, especially at dawn and dusk when mosquitoes are active.
- ④ Check your yard and garden for mosquitoes.
- ④ Mosquitoes are most active during dusk.
- ④ Check your yard and garden for mosquitoes.

A CITY AFFILIATION OF WEST NILE VIRUS IS A... (text is small and partially obscured)

To learn more about West Nile Virus,
 VISIT www.westnile.com
 Or call 1-877-999-8888 (999-2438)

FIGHT THE BITE!

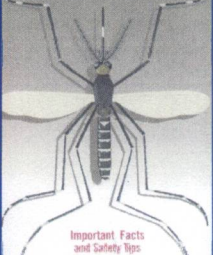


JOIN THE "BAT TEAM" AGAINST WEST NILE VIRUS

... (text is small and partially obscured)

West Nile Virus

Protect yourself and your family



Important Facts and Safety Tips

... (text is small and partially obscured)

Education and Outreach

There have been over 20 community presentations given throughout the City.



“Door to Door” Outreach



Thank you for your interest in the
West Nile Virus

