



**GULIAN DESIGN**  
ARCHITECTURE

5855 NAPLES PLAZA SUITE 202  
LONG BEACH CALIFORNIA 90803  
(562) 434-6993

REVISIONS:

1	
2	
3	
4	
5	
6	
7	
8	
9	
10	

**PETERS RESIDENCE**  
NEW CUSTOM RESIDENTIAL DUPLEX  
5925 E SEASIDE WALK  
LONG BEACH, CA 90803

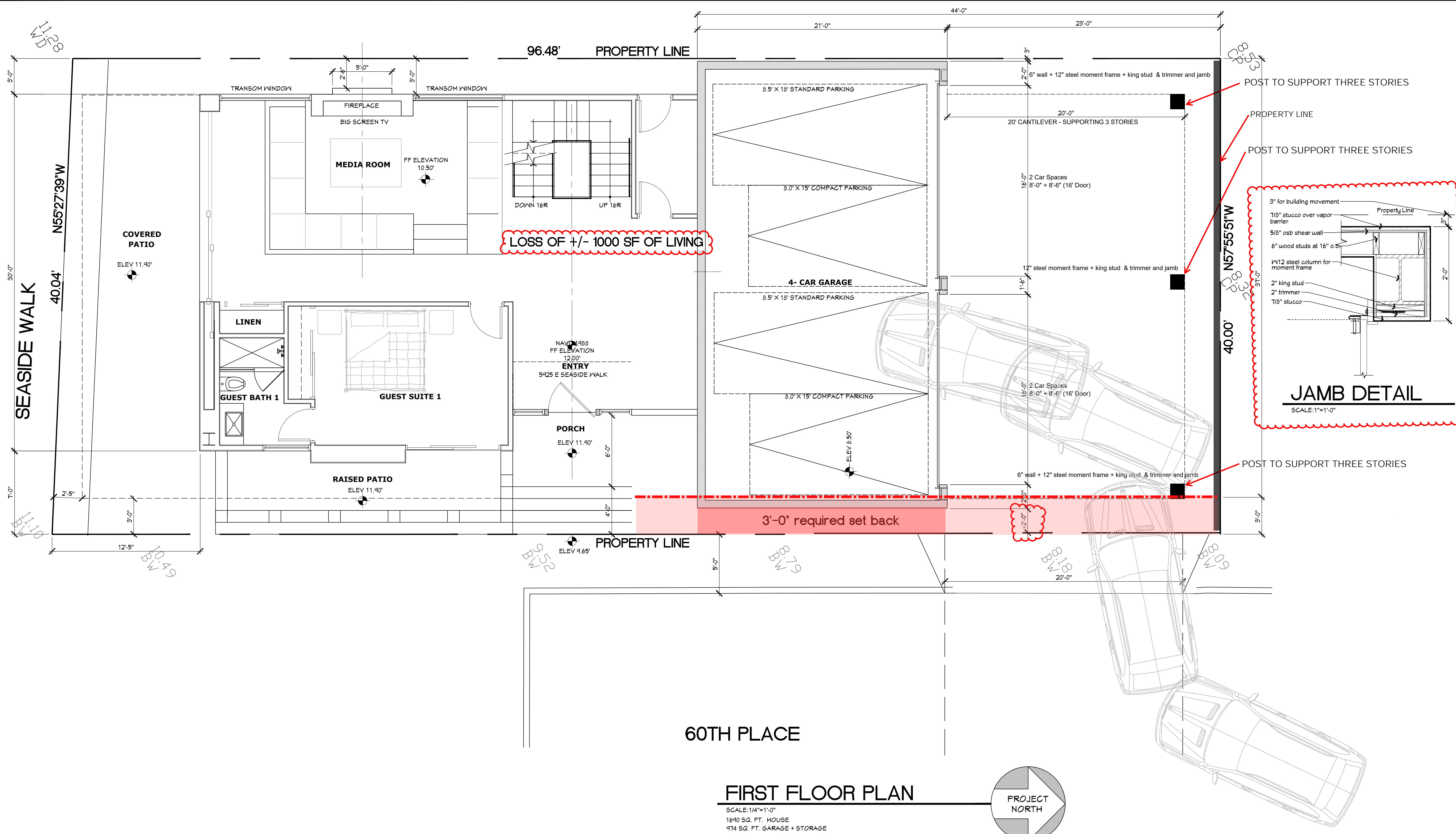
PROPOSED  
FIRST FLOOR PLAN

DRAWN BY: **EVG**  
SCALE: **NOTED**  
CAD FILE: **XXXXXXXXXX**  
PROJECT NO.:  
DATE: **1-7-2022**

**A1.1**

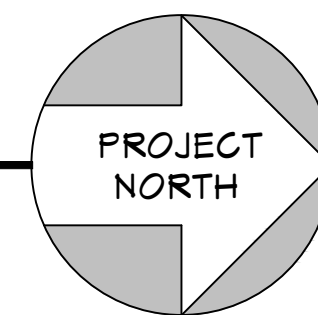
SHEET \_\_\_ OF \_\_\_

THESE PLANS ARE THE PROPERTY OF GULIAN DESIGN, INC. AND MAY NOT BE REPRODUCED IN PART OR WHOLE WITHOUT THE WRITTEN PERMISSION OF GULIAN DESIGN, INC.



**FIRST FLOOR PLAN**

SCALE: 1/4"=1'-0"  
1690 SQ. FT. HOUSE  
974 SQ. FT. GARAGE + STORAGE





**GULIAN  
DESIGN**  
ARCHITECTURE

5855 NAPLES PLAZA SUITE 202  
LONG BEACH CALIFORNIA 90803  
(562) 434-6993

REVISIONS:

1	
2	
3	
4	
5	

**PETERS RESIDENCE**  
NEW CUSTOM RESIDENTIAL DUPLEX  
5925 E SEASIDE WALK  
LONG BEACH, CA 90803

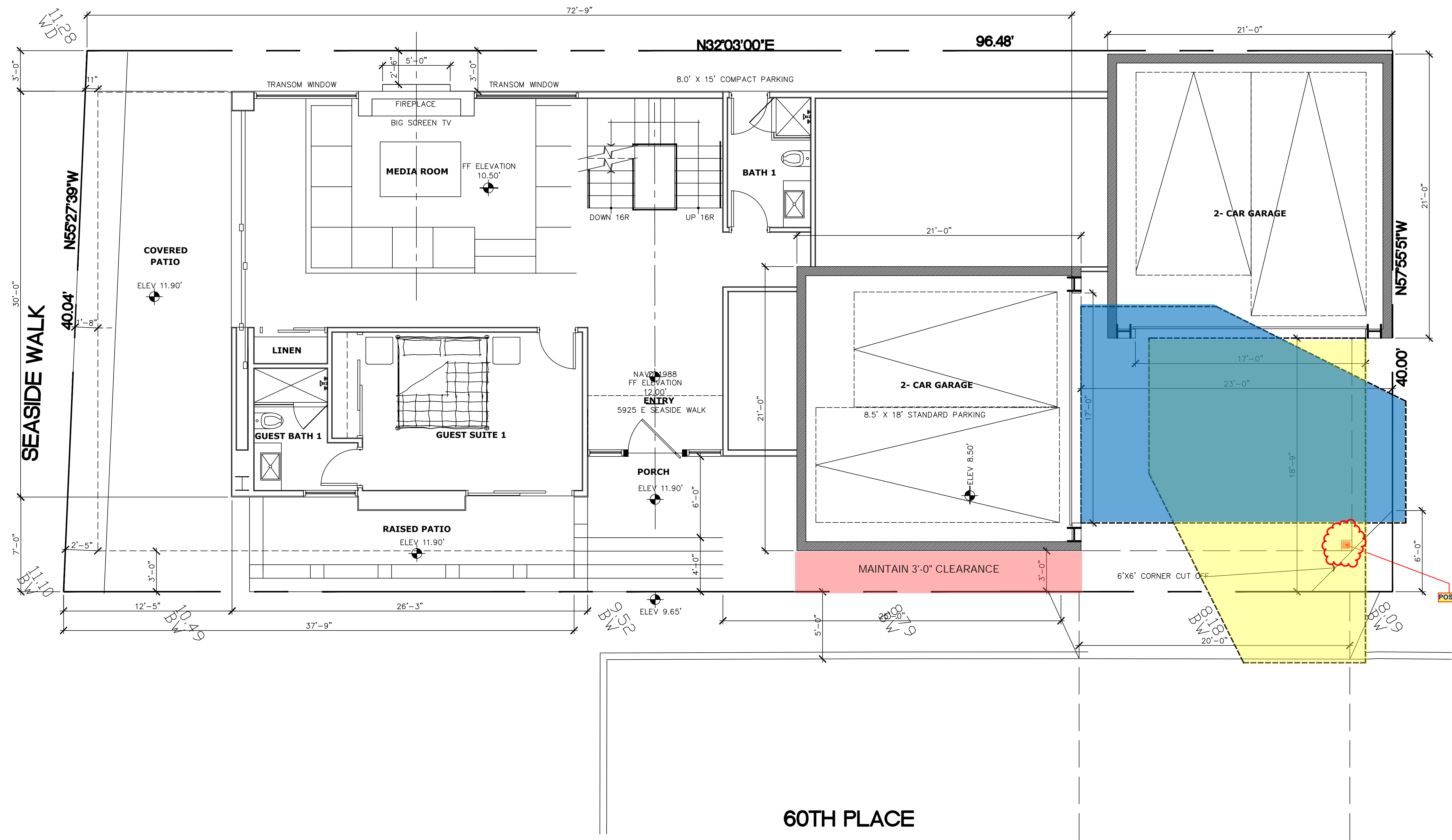
PROPOSED  
FIRST FLOOR PLAN

DRAWN BY: **EVG**  
SCALE: **NOTED**  
CAD FILE: **XXXXXXXXXX**  
PROJECT NO.:  
DATE: **1-7-2022**

**A1.1**

SHEET \_\_\_ OF \_\_\_

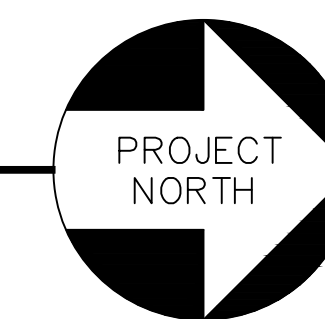
THESE PLANS ARE THE PROPERTY OF GULIAN DESIGN, INC. AND MAY NOT BE REPRODUCED IN PART OR WHOLE WITHOUT THE EXPRESSED WRITTEN PERMISSION OF GULIAN DESIGN, INC.



60TH PLACE

**FIRST FLOOR PLAN**

SCALE: 1/4"=1'-0"  
1690 SQ. FT. HOUSE  
974 SQ. FT. GARAGE + STORAGE



L128

SEASIDE WALK

L110

N55°27'39"W

ELEV 11.90'

B10.49

TRANSOM WINDOW

MEDIA ROOM

FF ELEVATION 10.50'

DOWN 16R  
UP 16R

BATH 1

NAV 1988  
FF ELEVATION 12.00'

ENTRY

5925 E SEASIDE WALK

PORCH

ELEV 11.90'

RAISED PATIO

ELEV 11.90'

ELEV 9.65'

MAINTAIN 3'-0" CLEARANCE

6'x6' CORNER CUT OFF

2- CAR GARAGE

2- CAR GARAGE

8.5' X 18' STANDARD PARKING

ELEV 8.50'

B10.18

B10.09

POST

72'-9"

96.48'

N32°03'00"E

21'-0"

N57°55'51"W

40.00'

6'-0"

20'-0"

20'-0"

20'-0"

20'-0"

20'-0"

20'-0"

20'-0"

20'-0"

20'-0"

20'-0"

20'-0"



**GULIAN DESIGN**  
ARCHITECTURE  
5855 NAPLES PLAZA SUITE 202  
LONG BEACH, CALIFORNIA 90803  
(562) 434-6993

REVISIONS:

1	
2	
3	
4	
5	

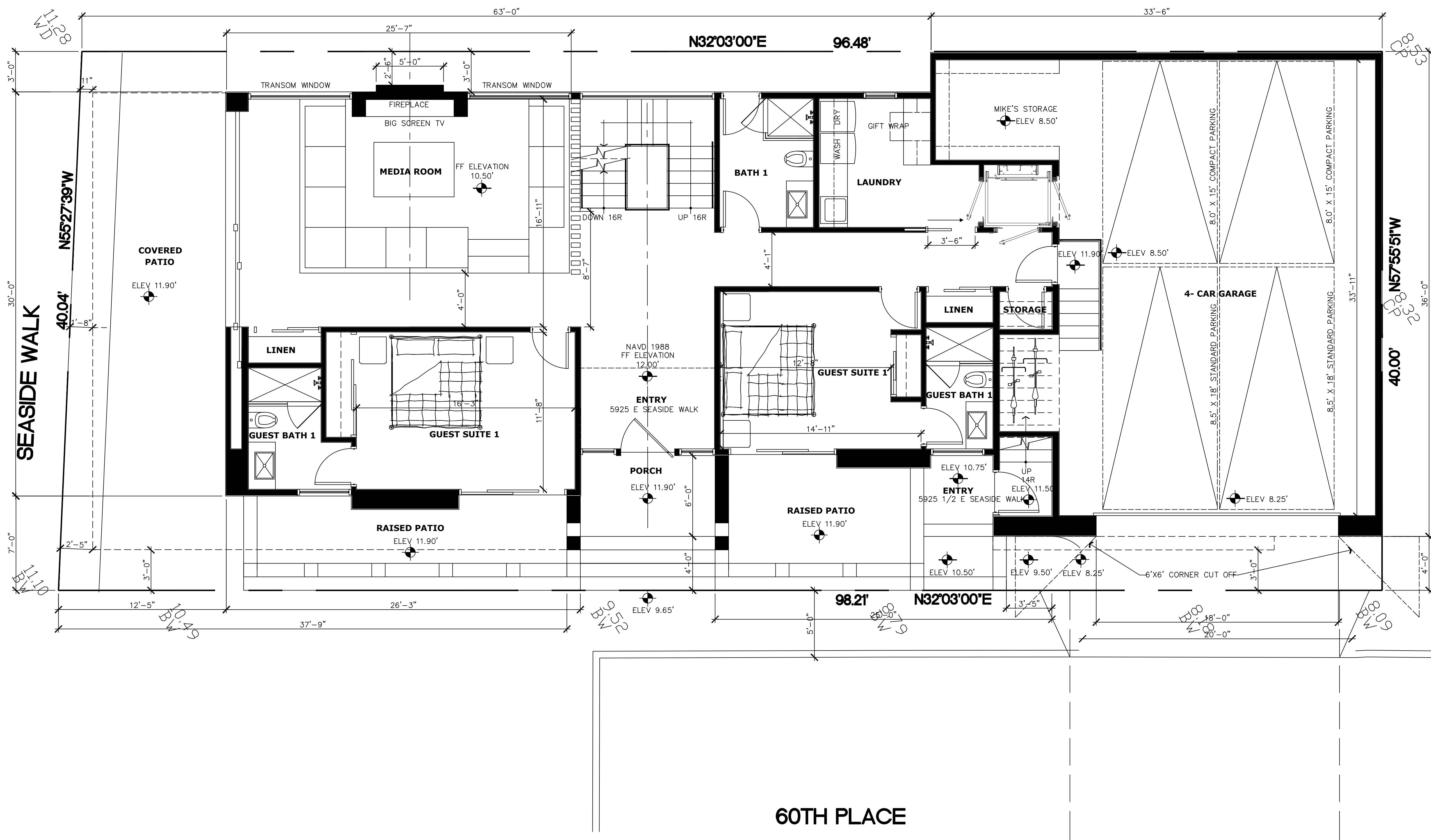
**PETERS RESIDENCE**  
NEW CUSTOM RESIDENTIAL DUPLEX  
5925 E SEASIDE WALK  
LONG BEACH, CA 90803

PROPOSED  
FIRST FLOOR PLAN

THESE PLANS ARE THE PROPERTY OF GULIAN DESIGN, INC. AND MAY NOT BE REPRODUCED IN PART OR WHOLE WITHOUT THE EXPRESSED WRITTEN PERMISSION OF GULIAN DESIGN, INC.

DRAWN BY:	EVO
SCALE:	NOTED
CAD FILE:	XXXXXXXXXX
PROJECT NO.:	
DATE:	1-7-2022

**A1.1**  
SHEET \_\_\_ OF \_\_\_



**FIRST FLOOR PLAN**

SCALE: 1/4" = 1'-0"  
1690 SQ. FT. HOUSE  
974 SQ. FT. GARAGE + STORAGE



60TH PLACE