

# MAC Report

**April 2021**



**SUBMITTED BY THE MARINE BUREAU**



## TABLE OF CONTENTS

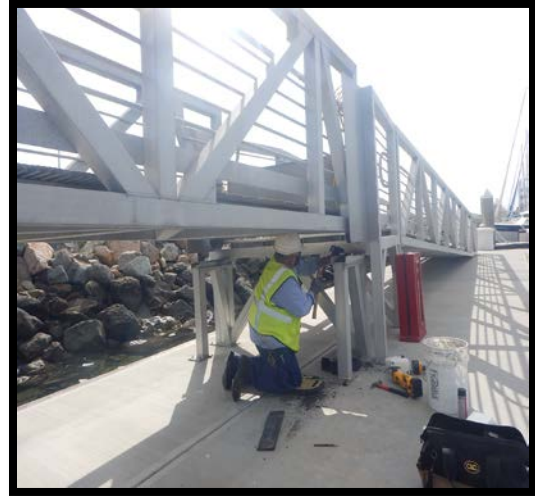
1. Marinas and Waterways
2. Beaches and Waterways
3. Marine Maintenance Work Order Graphs
4. Pump Out Inspection Report
5. Tide Table



## **MARINAS AND WATERWAYS**

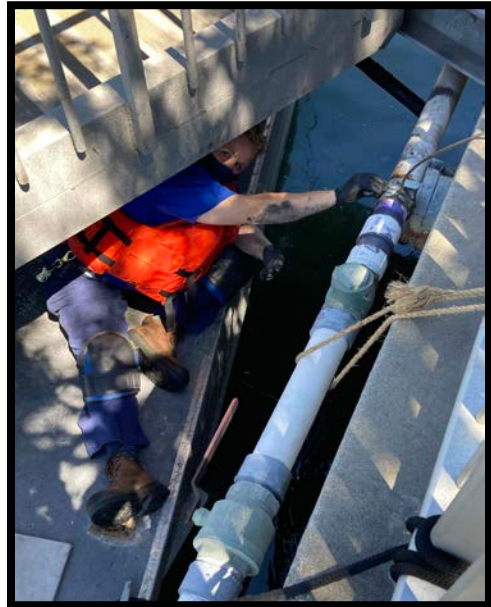
### **Accomplishments**

- ❖ Staff completed striping the boatowner's parking area throughout Basins 1-3.
- ❖ Staff completed painting curbs throughout Basin 4 parking lot.
- ❖ Staff completed painting curbs in Mother's Beach parking lot.
- ❖ Staff completed renovating the women's locker room for Marine Patrol.
- ❖ Staff with assistance of a crane installed all new Teflon skid plats to Gangway GG ramp
- ❖ Staff has completed installing all new roller bearings for Gangway's A thru DD.
- ❖ Staff installed new metal doors at Boat Owner Restrooms D-2 & D-5
- ❖ Staff completed painting all concrete bench's and trash cans throughout mole road including painting bollards next to fishing bridges.
- ❖ Basin 8 dock floats were scraped and cleaned.
- ❖ Staff installed 2 benches at LA Bella fountain in Naples.



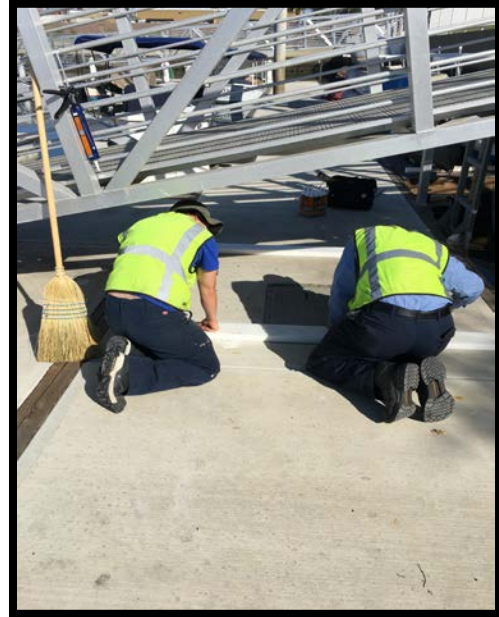
### **Projects in the works**

- ❖ Staff is in the process of replacing all the damaged and missing signs throughout the Long Beach Shoreline Marina. Staff has already replaced all the "Gangway" and "No Visitor" signs. 90% completed
- ❖ Staff is in the process of retrofitting the existing twelve (12) booster pumps from a wet system to a dry fire suppression system in the Long Beach Shoreline Marina. 50% completed
- ❖ Staff is in the process of making improvements to the Alamitos Bay Marina office including: painting the interior of the building. 50% completed
- ❖ Staff is in the process of inspecting and tightening all the loose fingers throughout the Long Beach Shoreline Marina. 40% completed
- ❖ Staff is in the process of inspecting and replacing all the damaged gangway water supply lines throughout Long Beach Shoreline Marina, as needed. 45% completed



## MARINAS AND WATERWAYS

- ❖ Staff is in the process of repairing the restroom plumbing throughout Long Beach Shoreline Marina. 35% completed
- ❖ Staff is in the process of repairing concrete fingers throughout Long Beach Shoreline Marina. 10% completed
- ❖ Staff is in the process of repairing all damaged concrete behind Spinnaker Bay near the seawall. 10% completed
- ❖ Staff is in the process of replacing all electrical components (breakers, receptacles, etc.) inside the pedestals located throughout Shoreline & Rainbow Harbor Marina's. 20% completed
- ❖ Staff is in the process of replacing exterior doors at the Belmont Pool office. 50% completed
- ❖ Staff is in the process of installing two (2) new power pedestals on long dock North. 50% completed
- ❖ Staff is in the process of doing all bright work in Basin's 1,2 & 3. 90% completed
- ❖ Staff is in the process of changing all roller bearings for DTM's gangways. 75% completed
- ❖ Staff is in the process of installing pony gates throughout Basin 2. 10% completed
- ❖ Staff is in the process of fabricating new fencing at boatowner's restroom D-6. 5% completed
- ❖ Staff is in the process of installing Teflon cart stops in Basin 1,2,3 and 4 80% completed
- ❖ Staff is in the process of painting exterior of Lifeguard Station 21. 60% completed
- ❖ Staff is in the process of replacing the roof at Station 31.
- ❖ Staff is in the process of painting memorial benches in ABM. 25% completed
- ❖ Staff is in the process of installing two isolation valves for all 31 Gangway's in Shoreline Marina. 5% completed
- ❖ Staff is in the process of replacing old and adding where needed "Boat owner parking only" signs as well as installing all new Bike route signs in the City.
- ❖ Staff is currently training additional staff member to obtain NCCCO crane certification.





## **BEACHES AND WATERWAYS**

### **Accomplishments**

- ❖ Beach Maintenance staff removed over 105 tons of trash and debris from the beaches and inner bays.
- ❖ Beach Maintenance staff removed trash and debris from the beach waterline.
- ❖ Beach Maintenance staff serviced 200 trash receptacles during the month of April.
- ❖ Beach Maintenance staff built up and maintained the berm on the East Peninsula beach between 62<sup>nd</sup> – 72<sup>nd</sup> place and along the bayside.
- ❖ Beach Maintenance staff swept the bike/pedestrian path.
- ❖ Beach Maintenance staff conducted weekly cleanups of several homeless encampments throughout the beach areas.
- ❖ Beach Maintenance staff graded and replaced sand in the inner bays.
- ❖ Beach Maintenance added new plants to the planters in Basin 1 & 2.
- ❖ Beach Maintenance staff mulched the Esplanade flower beds.
- ❖ Beach Maintenance staff planted Lomandra Breeze (grass like plant) to the Shoreline Drive medians and Station 35 planters.
- ❖ Queensway Bay staff conducted a cleaning of all 60 basket filters in the Rainbow Lagoon; six days per week, twice per day. Staff replaces and cleans all 60 baskets once a month.
- ❖ Queensway Bay staff conducted daily removal of water borne debris and algae in the Rainbow Lagoon, Rainbow Harbor Marina and Long Beach Shoreline Marina using hand nets and a small skimmer boat.
- ❖ Queensway Bay staff repaired a leak in the 8" fill pipe at Rainbow Lagoon.
- ❖ Queensway Bay staff coordinated the repair of the circulation pump at Vault B.
- ❖ Queensway Bay staff removed trash from docks, three times per week.



## **BEACHES AND WATERWAYS**

- ❖ Queensway Bay staff conducted daily cleaning and maintenance of all trash skimmers on the docks, seven days per week.
- ❖ Queensway Bay staff conducted monthly inspections on all docks throughout Rainbow Harbor Marina.
- ❖ Queensway Bay staff serviced all sewage pumps on the commercial docks.
- ❖ Queensway Bay staff conducted weekly encampment posting and cleanups.
- ❖ Queensway Bay staff cleaned and sanitized the public elevator near the bird cage.
- ❖ Queensway Bay staff completed 154 work order request and 35 Go Long Beach request for the month of April.
- ❖ Queensway Bay staff cleaned and painted benches at the Bird Cage (2<sup>nd</sup> floor).
- ❖ Queensway Bay staff repaired and replaced seven (7) fenders along the Pine Ave Pier.
- ❖ Queensway Bay staff power washed and remove tire marks from concrete near the Lighthouse.
- ❖ Queensway Bay staff conducted daily graffiti removal of the entire Rainbow Harbor area, including the Queensway bridge bike path and the Pier Point parking lot.
- ❖ Queensway Bay staff performed routine maintenance on the Wave and Dolphin Fountain.
- ❖ Queensway Bay staff conducted routine maintenance on the Wave Fountain filter pumps.
- ❖ Queensway Bay staff power washed the exterior of the Wave Fountain bi-weekly.

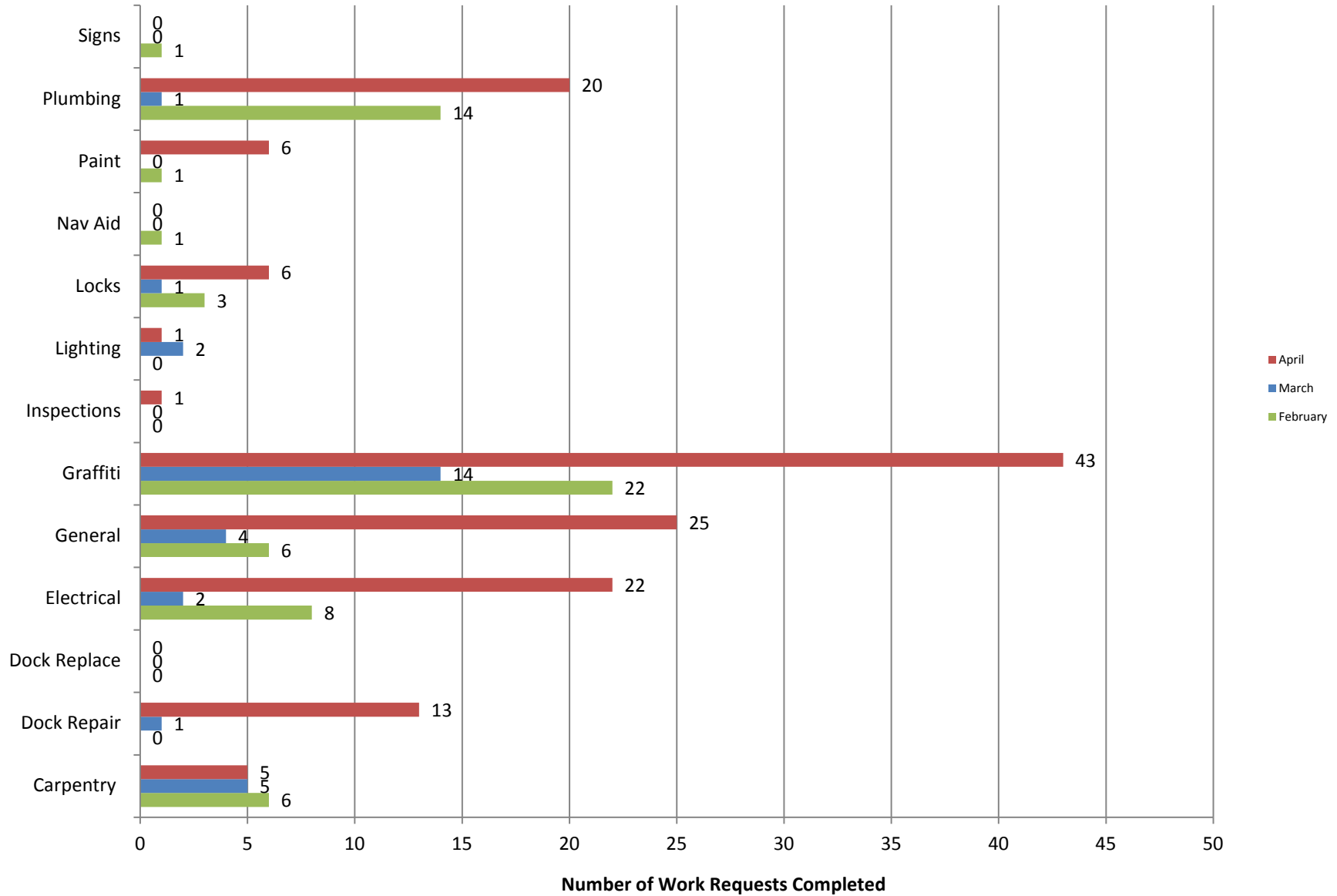
### **Projects in the works**

- ❖ Beach Maintenance staff is continuing the process of rebuilding sections of the peninsula where erosion occurs.



# Marine Maintenance

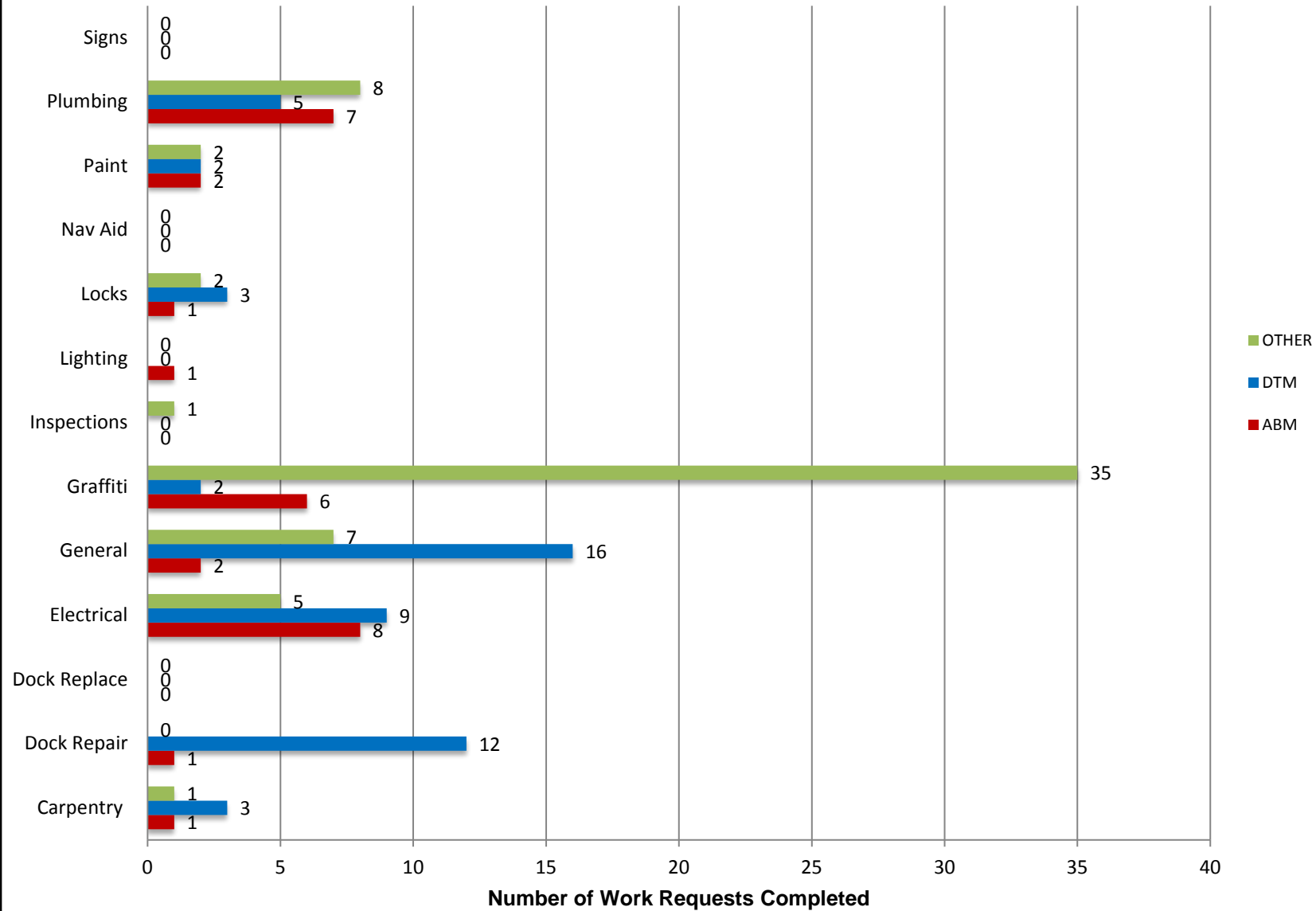
## Work Request Completed by Month





# Marine Maintenance

## Work Requests Completed by Location





## PUMPOUT INSPECTION REPORT

Pump Out Location	Inspection Date				
	04/01/21	04/08/21	04/15/21	04/22/21	04/29/21
Gwy A, A	W	W	W	W	W
Gwy A, B	W	W	W	W	W
Parker's Public Dock, A	W	W	W	W	W
Parker's Public Dock, B	W	W	W	W	W
Parker's Public Dock, C	W	W	W	W	W
Dock 9	W	W	W	W	W
Basin 6 South	W	W	W	W	W
Basin 6 North	W	W	W	W	W
Davie's Launch Ramp, A	W	W	W	W	W
Station 31, A	W	W	W	W	W
Station 31, B	W	W	W	W	W
Station 21	NW	W	W	W	W
Basin 1, Gwy 2	W	W	W	W	W
Basin 1, Gwy 4	W	W	W	W	W
Basin 2, Gwy 8	W	W	W	W	W
Basin 2, Gwy 11	W	W	W	W	W
Basin 3, Gwy 16	W	W	W	W	W
Basin 3, Gwy 19	W	W	W	NW	NW
Basin 4, Gwy 28	W	W	W	W	W
Basin 4, Gwy 31	W	W	W	W	W
Basin 5, Gwy 33	W	W	W	W	W
Basin 5, Gwy 34	N/A	W	W	W	W

KEY
W = Working
NW = Not Working
N/A = Not Applicable

# California, Los Angeles, Long Beach, Inner Harbor

May 2021

N 33° 46.3' / W 118° 12.6'

