



LONG BEACH AIRPORT MONTHLY AIRPORT ACTIVITY REPORT September 2005

Current Month and CY-T-D Statistics for Long Beach Airport

	September			January through September			
	2005	2004	%Change	2005	2004	%Change	
Total Passenger Traffic	233,153	227,666	2.4%	2,322,029	2,220,608	4.6%	
Enplaned Passengers	Load Factor						
Alaska	73%	8,429	5,850	44.1%	81,389	58,219	39.8%
America West Airlines	73%	9,362	7,527	24.4%	84,987	64,723	31.3%
American Airlines	76%	11,835	20,134	-41.2%	133,618	204,133	-34.5%
JetBlue Airways	79%	88,615	82,208	7.8%	868,824	791,445	9.8%
Total	78%	118,241	115,719	2.2%	1,168,818	1,118,520	4.5%
Airline Landings	1,093	1,029	6.2%	9,762	9,516	2.6%	
Aircraft Operations (FAA)							
Air Carrier	2,424	2,344	3.4%	21,733	21,213	2.5%	
Air Taxi + General Aviation	26,860	26,263	2.3%	245,798	240,999	2.0%	
Military	43	46	-6.5%	453	617	-26.6%	
Total	29,327	28,653	2.4%	267,984	262,829	2.0%	
Air Cargo							
US Tons	4,581.32	5,024.3	-8.8%	40,878.10	43,692.2	-6.4%	
Metric Tons	4,155.25	4,557.0	-8.8%	37,076.43	39,628.9	-6.4%	

Note: Airport has 41 commercial flights and 2 commuter flights.

Total Passenger Traffic – Total number of airline passengers both enplaned (departing) and deplaned (arriving).

Aircraft Operations – Aircraft takeoff, landing, or transition through the airspace controlled by the FAA's Long Beach air traffic control tower.

Air Carrier – A scheduled carrier, certificated under FAA Regulations (FAR) Parts 121, 125 or 135, max. takeoff weight of over 75,000lbs (passengers or cargo).

Air Taxi – Aircraft that provide public transportation of persons and/or property on-demand.

General Aviation – Aviation activity other than scheduled air carriers flights, flights by industrial operators or by charter and flights by public aircraft

Air Cargo – Cargo carried by aircraft, both inbound and outbound.



City of Long Beach
Working Together to Serve

Memorandum

Date: October 20, 2005
To: Airport Advisory Commission
From: Ken Ashmore, Operations Specialist, Airport Bureau
Subject: AIRPORT STATISTICS FOR SEPTEMBER 2005

Please find attached the following reports:

- **Noise Complaint Report**
- **Plot of Complainants**
- **Noise Violation Report**
- **Noise Violation List**
- **Late Night Activity**

**LONG BEACH AIRPORT MONTHLY REPORT
NOISE COMPLAINTS
September 2005**

Current Month and CY-T-D Statistics for Long Beach Airport

	September 2005			CY-T-D 2005			
	2005	2004	%Change	2005	2004	%Change	
<u>Commercial & Commuter Complaints</u>							
	# of flights*						
Passenger & Cargo Aircraft	44	149	362	-58.8%	1,964	2,632	-25.4%
<u>Non-Commercial Complaints</u>							
Jets	112	110	1.8%	726	892	-18.6%	
Props	34	24	41.7%	313	237	32.1%	
Helicopters	20	14	42.9%	102	211	-51.7%	
Other	0	0		5	1		
Subtotal	166	148	12.2%	1,146	1,341	-14.5%	
Duplicate complaints*	516						
TOTAL NOISE COMPLAINTS	831	510	62.9%	3,110	3,973	-21.7%	
<u>Airport Operations (FAA)</u>							
Aircraft Operations	2,424	2,344	3.4%	19,309	18,869	2.3%	
Total GA Operations	26,250	25,729	2.0%	214,378	209,480	2.3%	
Military Operations	43	46	-6.5%	410	571	-28.2%	
TOTAL AIRCRAFT OPERATIONS	29,327	28,653	2.4%	234,097	228,920	2.3%	

Notes:

*Emails with common attached listings of aircraft events

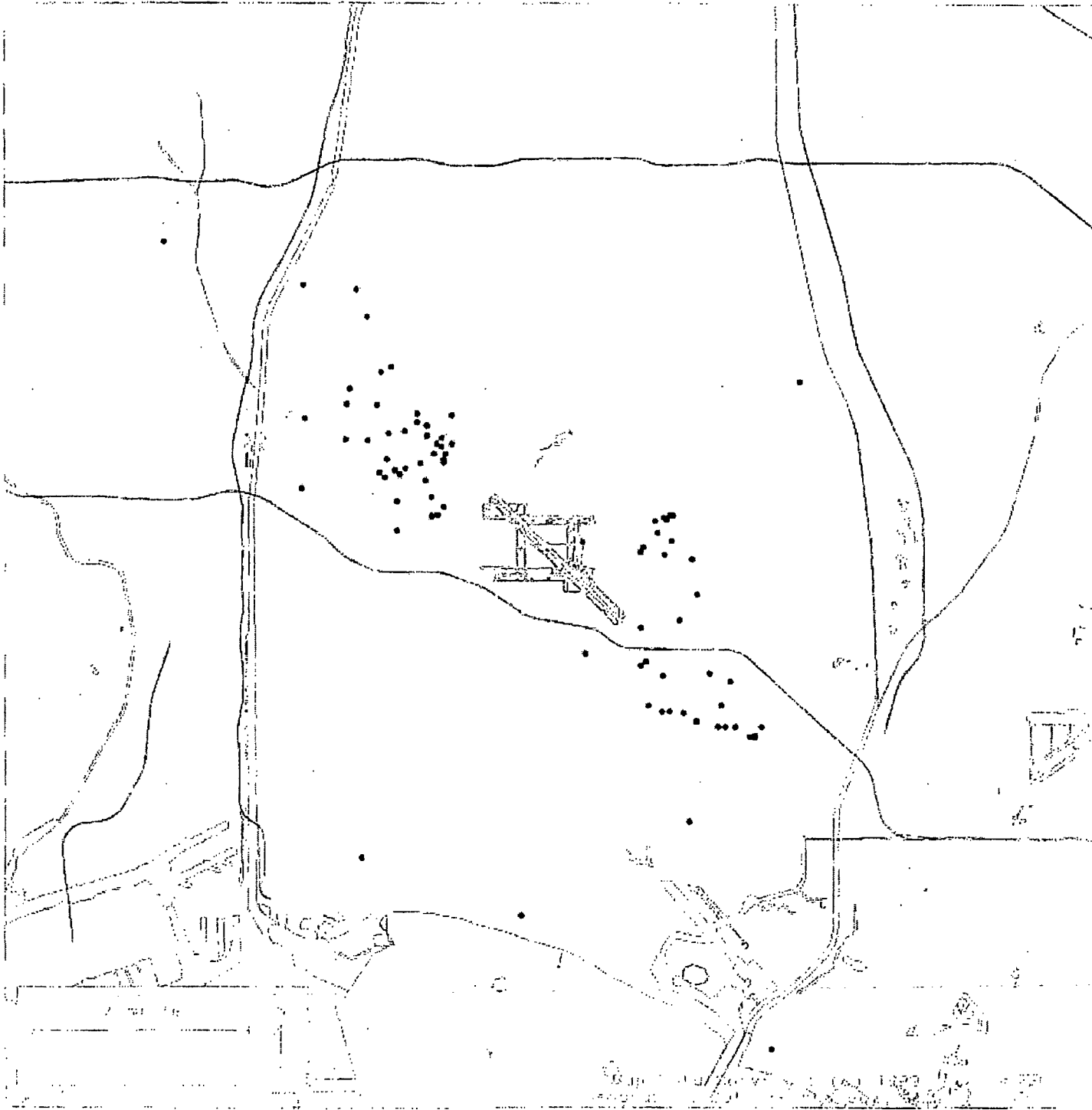
Number of Complainants: 124

21% (176 of 831) of the complaints were related to operations between 10pm and 7am

68% (546 of 831) of the complaints were generated by 18 individuals

3% (23 of 831) of the complainants reside in Seal Beach or Huntington Beach

* City Noise Ordinance currently allows for 41 commercial and 25 commuter flight, for a total of 66 daily flights.



LONG BEACH
A I R P O R T

Sep erbe

LONG BEACH AIRPORT MONTHLY REPORT NOISE VIOLATIONS

September 2005

Current Month and CY-T-D Statistics for Long Beach Airport

September 2005

CY-T-D 2005

		September 2005			CY-T-D 2005		
		2005	2004	%Change	2005	2004	%Change
<u>Air Carrier Violations</u>	# of daily flights						
Alaska	3	0	0		4	0	
America West Airlines	5	0	0		2	1	100.0%
American Airlines	5	0	0		7	7	0.0%
JetBlue Airways	23	2	0		29	14	107.1%
Airborne	1	0	1	-100.0%	0	1	-100.0%
FedEx	2	0	0		0	3	-100.0%
UPS	2	0	1	-100.0%	3	7	-57.1%
Total	41	2	2	0.0%	45	33	36.4%
<u>Commuter Violations</u>							
America West	3	0	0		0	0	
Total	3	0	0		0	0	
<u>Non-Commercial Violations</u>							
All GA, Charter & other		23	9	155.6%	158	114	38.6%
TOTAL NOISE VIOLATIONS		25	11	127.3%	203	147	38.1%
<u>Airport Operations (FAA)</u>							
Air Carrier		2,424	2,344	3.4%	19,309	18,869	2.3%
Air Taxi + General Aviation		26,860	26,263	2.3%	214,378	209,480	2.3%
Military Operations		43	46	-6.5%	410	571	-28.2%
TOTAL AIRCRAFT OPERATIONS		29,327	28,653	2.4%	234,097	228,920	2.3%

Notes:

0.09% (25 of 29,327) of the Airport's total aircraft operations (Commercial & GA) resulted in a noise violation. ...

0.08% (2 of 2,424) of the Airport's Commercial operations (Commercial & Commuter) resulted in a noise violation.

LONG BEACH AIRPORT MONTHLY REPORT
COMMERCIAL LATE NIGHT ACTIVITY (10pm - 7am)
 September 2005

Current Month and CY-T-D Statistics for Long Beach Airport

	September 2005			CY-T-D 2005		
	2005	2004	%Change	2005	2004	%Change
<u>Total Commercial Operations</u>	2,424	2,344	3.4%	21,674	21,213	2.2%
10pm - 11pm Operations # daily flights						
Alaska	3	2	0.0%	42	19	121.1%
America West Airlines	5	7	600.0%	38	6	533.3%
American Airlines	5	0	-100.0%	19	114	-83.3%
JetBlue Airways	23	21	23.5%	286	233	22.7%
Airborne	1	0		0	0	
FedEx	2	1	0.0%	1	1	0.0%
UPS	2	0		1	0	
Total	41	31	10.7%	387	373	3.8%
11pm - 7am Operations						
Alaska	0	2	-100.0%	6	4	
America West Airlines	0	0		4	0	
American Airlines	0	0		0	4	-100.0%
JetBlue Airways	3	2	50.0%	38	24	58.3%
Airborne	0	1	-100.0%	0	2	0.0%
FedEx	0	0		0	0	0.0%
UPS	0	1	-100.0%	0	2	-100.0%
Total	3	6	33.3%	48	36	33.3%

Notes:

1.4% (36 of 2,424) of total commercial operations occurred between 10pm - 7am

*1.2 flights - Nightly average for ALL late night commercial flights, includes unanticipated delays.

*0.1 flights - Nightly average for Commercial flights after 11 PM