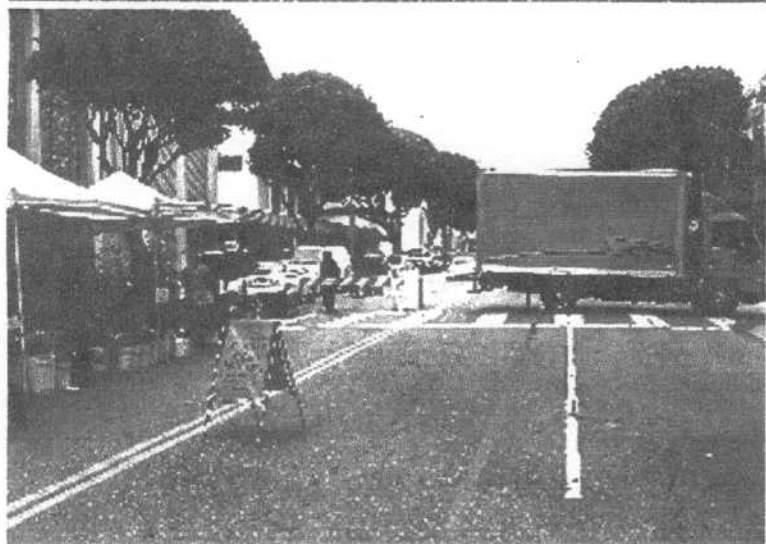
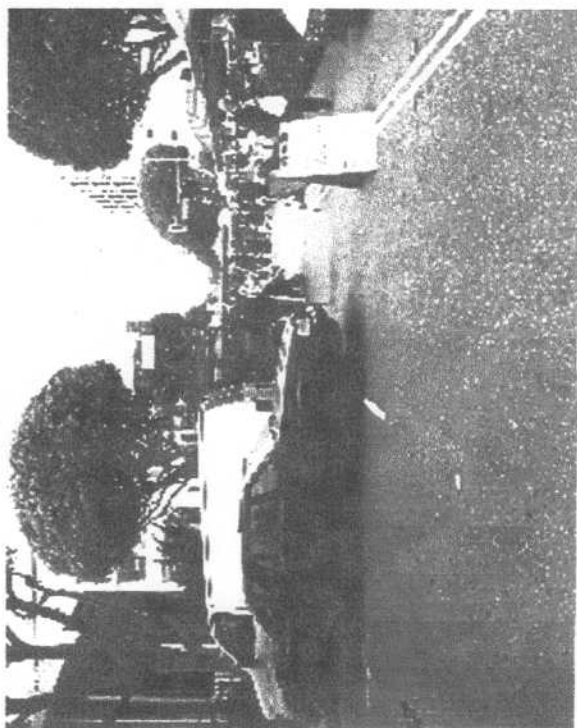
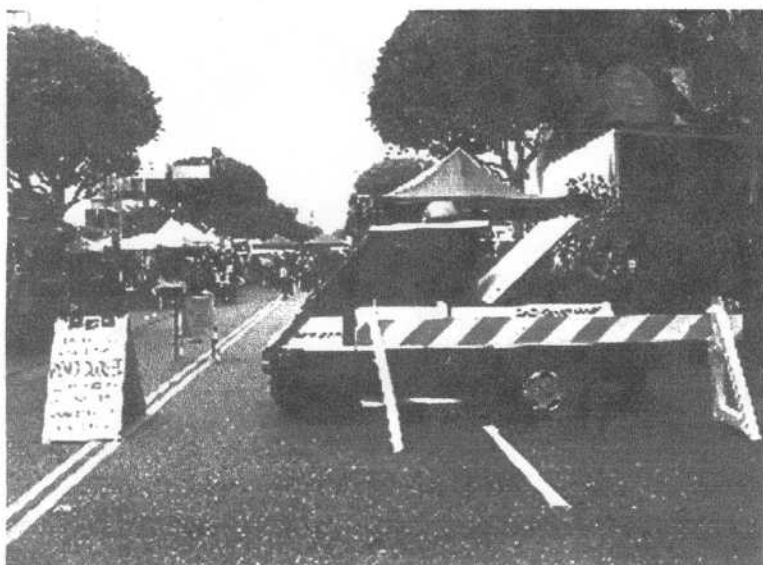
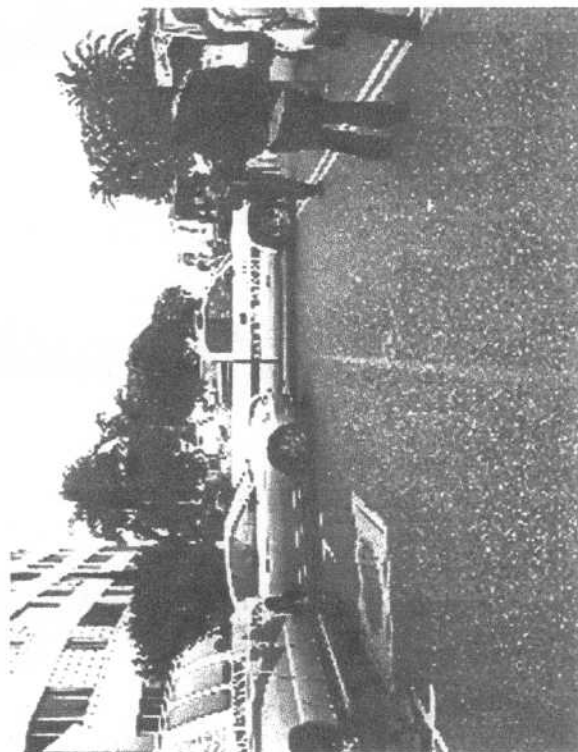


Dale Whitney

SANTA MONICA
FARMERS MARKET
SPRING 2008

15

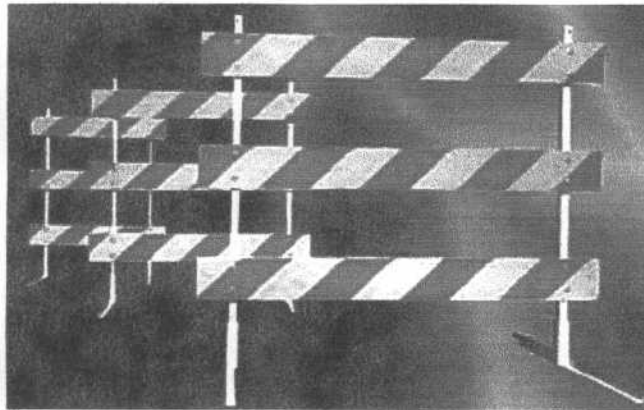




Type III Barricade

[DOWNLOAD LITERATURE](#) | [REQUEST CATALOG](#) | [ORDER FORM](#)

- [● About Us](#)
- [● Product Line](#)
- [● Catalog Request](#)
- [● Forms/Documents](#)
- [● Order Status](#)
- [● Meet Our Team](#)
- [● Our Location](#)
- [● Industry Links](#)
- [● Contact Us](#)
- [● Home Page](#)



FEATURES:

- The first and finest NCHRP-350 approved steel and plywood Type III barricades.
- Durable, hot rolled high carbon steel construction with universal mounting holes.

- Easy to assemble, bolt together, very portable.
- Unique base design allows for short term or permanent securing.
- Weather resistant baked enamel paint.
- Accommodates reflective sheeting on both sides of panels and accepts two flashing lights.
- Multiple barricades can be joined in series.
- Excellent high wind stability.



SPECIFICATIONS

Material	Hot rolled high carbon steel
Panel Height (top)	5'
Panel Height (center)	3' 4"
Panel Height (bottom)	2' 8"
Panel Width	8"
Panel Length	4', 5', 6', 8'
Panel Thickness	ACX Plywood: 3/4" Douglas Fir: 2"
Reflective Sheeting	EG / SEG / HI / DG
Steel Frame	1 1/2" x 1 1/2" x 3/16" x 63"
Steel Base Stand	1 1/2" x 1 1/2" x 3/16" x 60" with 2" x 2" x 8" square tubing receiver

All specifications and descriptions are subject to change without notification.