



Long Beach Airport

Green Airport Program and Neighborhood Protection Program Presentation

October 23, 2007



Green Airport Program

- The Green Airport Program is comprised of the following components:
 - City's 2010 Strategic Plan- primary goal of "becoming a Sustainable City"
 - City's Airport Noise Compatibility Ordinance
 - Green Airport Elements
 - Neighborhood Protection Plan



Green Airport Program



- The City's 2010 Strategic Plan positions "becoming a Sustainable City" as a primary goal.
 - Stormwater Management Program - implemented in the early 90's, includes tenant information and resources provided on the web; City produced & distributed training video
 - Recycling Program - since joining the Conservation Corps' Program in 2004, diverted over 200 tons from landfill



Green Airport Program

Airport Noise Compatibility Ordinance

- Result of 12 years of litigation;
- Settlement reached in 1995, which resulted in the adoption of LBMC 16.43;
- Addresses noise at its “source” through the establishment of annual noise budgets;
- Established Single Event Noise Equivalent Levels (SENEL);
- Established limitations on hours of training and aircraft run-up operations.





Green Airport Program

Green Airport Elements

- Ensure and maintain the integrity of the City's Airport Noise Compatibility Ordinance;
- Lessen the impact of noise on the community by taking applicable enforcement actions against 100% of identified Noise Ordinance violators;
- Minimize the impacts of Airport operations on the community and environment from airport impacts, e.g., by diverting waste, using products that reduce toxicity, and using energy-efficient design for new facilities;





Green Airport Program

Green Airport Elements

- Employ the most cost-effective technology to minimize airport impacts and leverage advanced technology solutions;





Green Airport Program

Green Airport Elements

- Strive to reduce pollution related to aircraft, ground equipment and vehicle transportation.
 - ✓ Long Range Capital Improvement Program includes the installation of preconditioned air and ground power in the airline ramp;
 - Design commencing in FY 08, with phased construction during FY 11
 - ✓ Awarded \$275,000 in AB2766 air quality improvement funds, resulting in electrical chargers for airline ground service equipment installation to be completed by year end 2007.



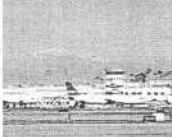


Green Airport Program



Green Airport Elements

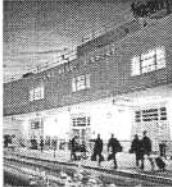
- Support AQMD air quality attainment levels through implementation of mitigation measures within its purview.
 - ✓ Public use electric vehicle charging stations installed in Lot C in 2007;
 - ✓ Encourage the use of public transportation.



Green Airport Program

Green Airport Elements

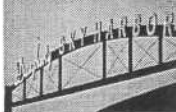
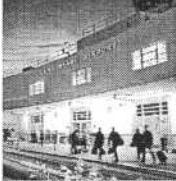
- Encourage the AQMD and CARB to continue and expand their air quality monitoring programs in Long Beach, and the Airport area;
 - ✓ Work with AQMD staff and consultants to analyze Teterboro, Van Nuys, and Santa Monica airports studies, as they become available;
 - ✓ Monitor the MATES III air monitoring results for the Long Beach area;
 - ✓ If, or when appropriate, seek grant funding for additional Long Beach area air monitoring.



Green Airport Program

Green Airport Elements

- Promote sustainability in terminal design, development and operations;
- Distinguish the Airport as a leader in environmental stewardship and regulatory compliance; and,
- Engage and educate the tenants, pilots, community, and employees about Airport development and environmental programs.



Neighborhood Protection Program



Neighborhood Protection Program

- Mobile Monitoring Plan
 - ✓ Component of the Airport's Land Use Compatibility Program
 - ✓ Proposal received from noise monitoring consultant (Acoustical Analysis Associates, Inc.) to conduct the noise measurement survey at six locations.
 - ✓ Six month testing needed for validation
 - ✓ Funding allocated in FY08 budget



Neighborhood Protection Program



■ Airport Lease Covenants

- ✓ Working with City Attorney to complete a draft 5-year Airline lease with following provisions:
 - Lease includes covenants not to sue;
 - Breach of lease provisions for noise violations;
 - Key language provisions taken from John Wayne Airport.
- ✓ Implementation expected within six months;
- ✓ Covenants to be included in future non-airline aviation leases.



Neighborhood Protection Program



- Legal Defense Funding
 - ✓ The Airport will maintain funding strategies to ensure the vigorous defense against legal or administrative challenges to the City's Airport Noise Compatibility Ordinance.



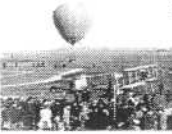
Neighborhood Protection Program



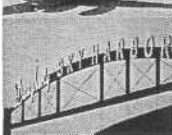
- Future Environmental Studies
 - ✓ The Airport will conduct appropriate environmental studies once total passenger numbers exceed 4.2 MAP.
 - ✓ The studies will include, where appropriate, mitigation measures to reduce identified significant environmental impacts.
 - ✓ Mitigation measures will be paid from the Airport Enterprise Fund.



Neighborhood Protection Program



- Process for Future Changes to Terminal Facilities
 - ✓ Prior to any changes in space utilization being implemented to the EIR approved post-screening facilities, a formal Council review hearing would be conducted.
 - ✓ Notification of the said Council hearing would be provided to the public and interested parties no less than 30 days prior to the hearing.

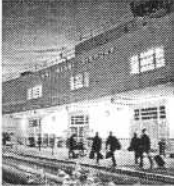


Neighborhood Protection Program

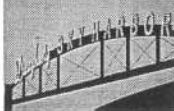
- Parcel O has been eliminated from the current Terminal Improvement Project.
 - ✓ Future use of Parcel O will require appropriate environmental documentation.



Neighborhood Protection Program

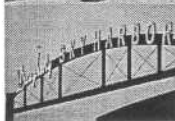


- Arrival/Departure Strategies
 - ✓ The Airport will continue to work with the FAA, Southern California, Airspace Users Working Group, Aviation Noise Abatement Committee, user groups, NBAA, AOPA and individual users to create and maintain the safest and most neighborhood friendly arrival/departure protocols.



Neighborhood Protection Program

- Airport Land Use Compatibility Program
 - ✓ The program shall include the following elements:
 - 65 CNEL contour homes;
 - 60 CNEL schools;
 - Public outreach & involvement will occur during the development of the plan;
 - “End of Block” application, will follow San Diego model;
 - Will continue to monitor for changes in federal noise level thresholds (CNEL).



Neighborhood Protection Program

- Program Oversight

- ✓ The City Manager will appoint a monitor for the Neighborhood Protection Program.
- ✓ The City Council will be presented with an annual Neighborhood Protection Program status report.
- ✓ The City Council will be presented with an annual Airport total passenger report .