

#13

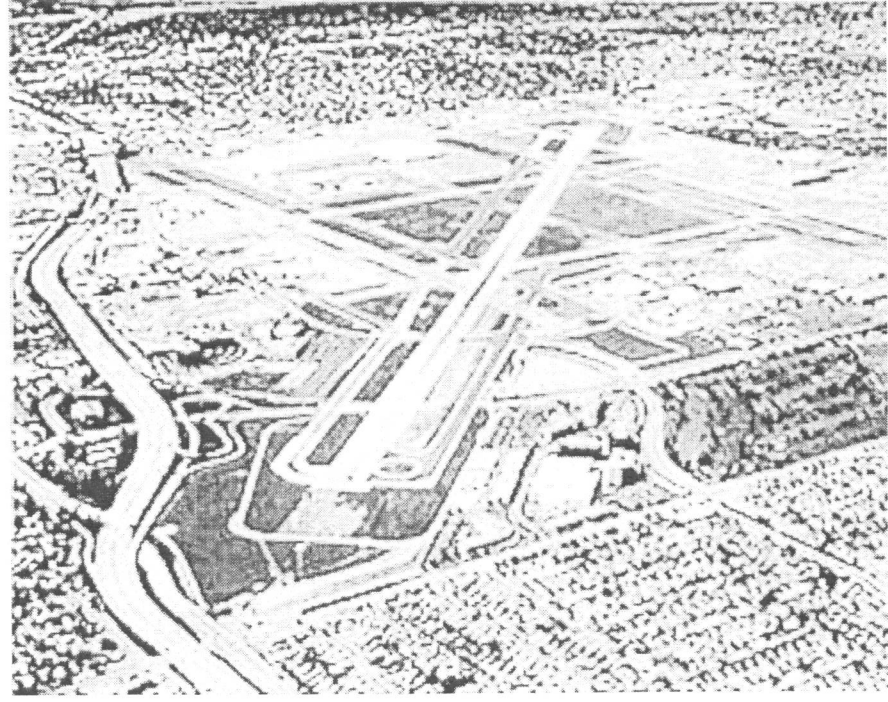
41

Long Beach Airport

Runway 12/30 Rehabilitation

Project Update

July 13, 2004



Background

- Based on 25 years of continuous deterioration, safety concerns mandated the rehabilitation of Runway 12/30.
- During 2003 there were 31 emergency closures of 12/30.
- In September 2003, City Council awarded construction contracts and work began in November.



Background

- City evaluated several construction options, including all night work and all day work, but rejected them due to FAA concerns about poor quality, added cost, increased construction time and on-airport construction risks.
- 98% of 12/30 work is being done during the hours of 11 p.m. to 6 a.m.
- Project on schedule for December completion.



Background

- Project scheduling, why Saturday?
 - ✓ Because of light travel demand we were able to reduce the number of commercial flights to 32.
 - ✓ No cargo flights flown.
 - ✓ Public input indicated a lesser impact to family life, school, work etc. on Saturday.



Background

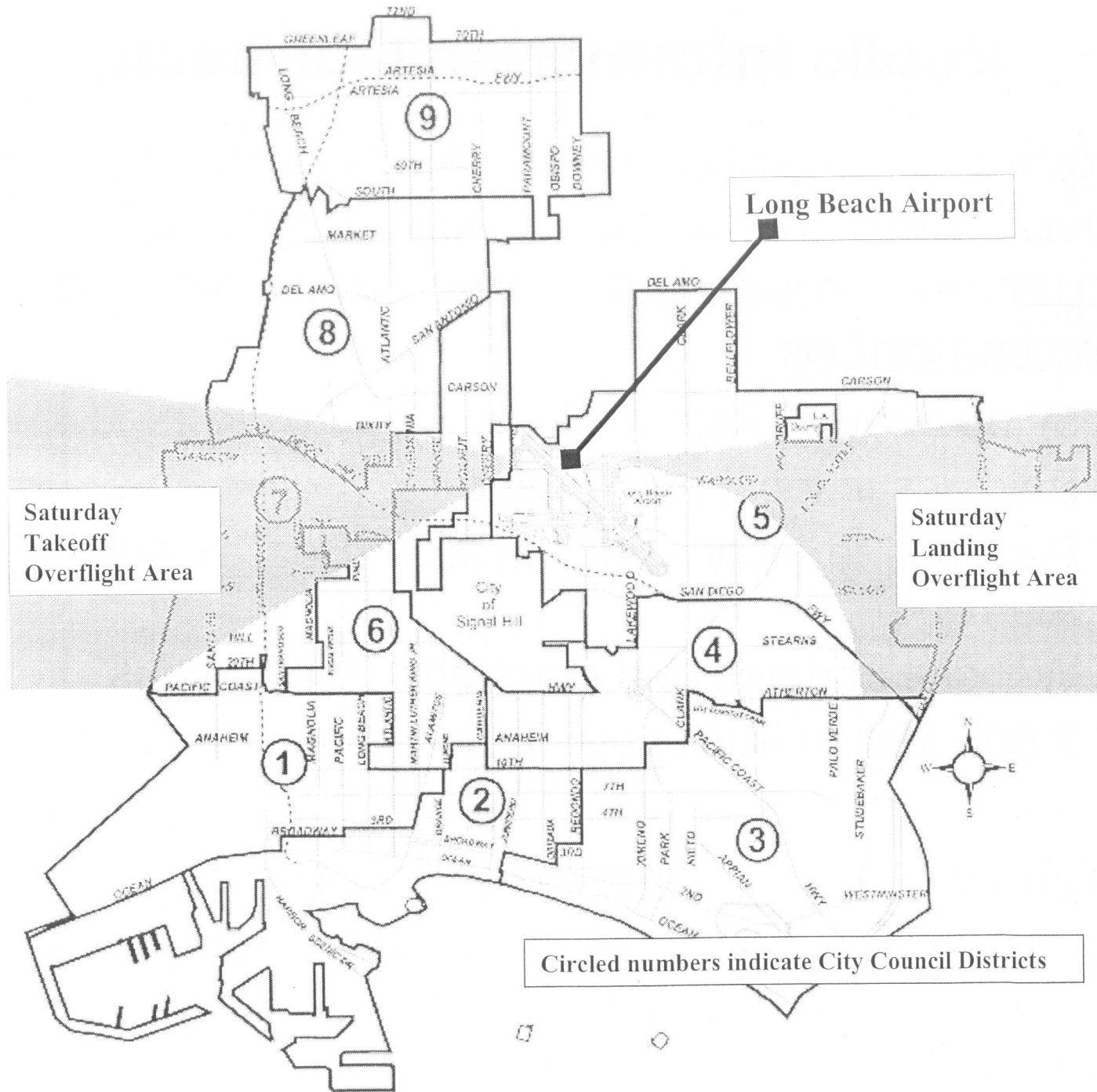
- Runway 7L/25R is designated as an alternate air carrier runway, and is classified as a Category D runway. That is, it meets or exceeds the design requirements for aircraft having approach speeds up to 165 knots.
- The air carrier aircraft using Runway 7L/25R as an alternate to Runway 12/30 are classified as Category C aircraft. Their approach speeds are less than 141 knots.



Background

- The Long Beach Airport's FAA-approved Part 139 Safety Certification Manual acknowledges the use of Runway 7L/25R as the air carrier alternate runway.





Public Information/Outreach

- Significant public information/outreach efforts have been made and will continue so that impacted residents are apprised of the circumstances.
 - ✓ 57,000 newsletters mailed
 - ✓ Paid ads in local print media
 - ✓ Paid ads in local print media in Seal Beach and Los Alamitos
 - ✓ Website updates and electronic notifications
 - ✓ 3,000 mailed truck haul route flyers

- Ongoing updates at Airport Advisory Commission meetings, and community forums.



First Weekend Closure Recap

- Total of 32 commercial flights
- Each of the flights was under the allowable noise levels for 12/30
- 86 total operations on 25R (commercial & GA).



First Weekend Closure Recap

- 61 calls and 2 emails related to use of 25R received from Friday through Sunday from LB (normal weekend avg. calls 10 to 15)
 - ✓ 25 re: Arrivals and 15 re: Departures
 - ✓ General complaints about use of 25R
 - ✓ Safety related to use of 25R
 - ✓ Specific complaints of low flying planes & loud noise
 - ✓ Selection of Saturday for repair work
 - ✓ Request for copy or additional copies of newsletter



First Weekend Closure Recap

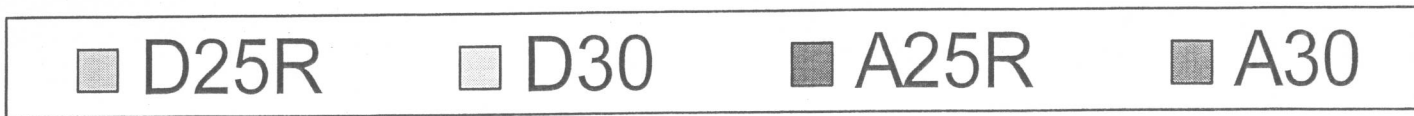
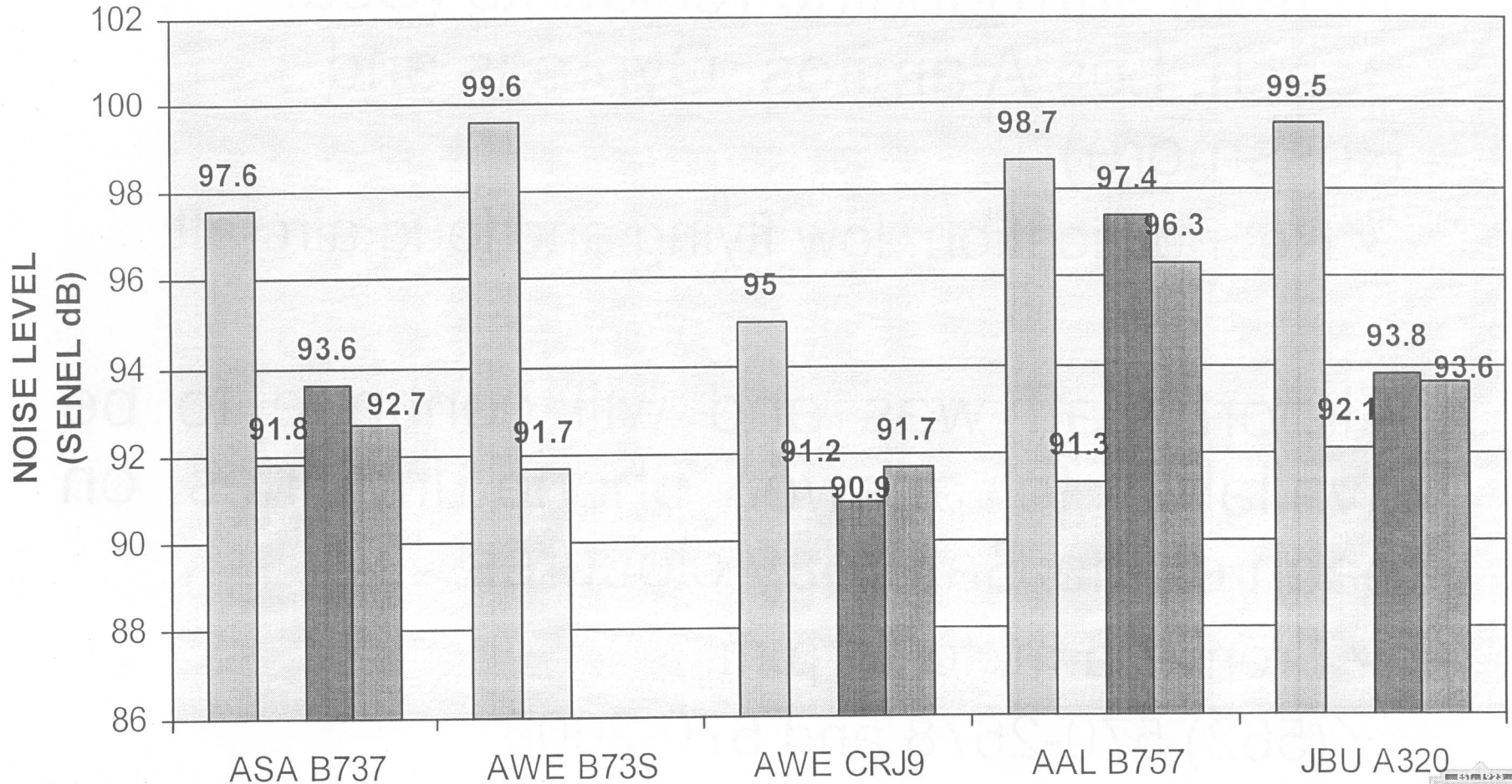
- 16 from surrounding residents (Seal Beach, Los Alamitos, Cypress and Rossmore)
 - ✓ Re: notification, low flying and loud aircraft

- Airport staff was and will continue to be available to answer phone inquiries on each of the Saturday closures
 - ✓ From 7 a.m. to 11 p.m.
 - ✓ (562) 570-2678 and 570-2600



COMMERCIAL SENEL AVG'S COMPARISON FOR RUNWAYS 25R & 30

7/3/04 (Runway 30) & 7/10/04 (Runway 25R)



Mitigation & Safety Measures

- Conducted a series of meetings with FAA Flight Standards, Air Traffic Control and Airport specialists and air carriers to identify and mitigate noise and safety issues associated with use of Runway 25R.
- Air carriers reduced take-off weights, added a fuel stop to accommodate operations off of 25R.
- Pilots issued special ground operations chart (Jeppesen) for the weekend closures.



Mitigation & Safety Measures

- Adjusted and conducted an FAA flight check of the Runway 25R Visual Approach Slope Indicator (VASI) system, to provide vertical guidance for air carrier aircraft on approach to Runway 25R.
- Worked with Southern California TRACON, the regional FAA approach control facility, and the air carriers to develop 25R arrival and departure routes & procedures.
- Increased distance between arriving aircraft on Runway 25R to accommodate air carrier back taxiing on the runway to exit.



Remaining Schedule

- Use of 7L/25R by airlines will occur on Saturday between 7 a.m. and 10 p.m. (possibly 11pm) for six additional Saturdays.
- Remaining Schedule
 - July 16 – 18 July 23 – 25
 - July 30 – August 1 August 6 – 8
 - September 10 – 12 September 17 – 19
- Weekend 12/30 closures begin on Friday, at 11 p.m. and last until Sunday morning at 7 a.m.



Lessons Learned from First Weekend

- All noise events measured on 25R, arrivals & departures, are less than those allowed on 12/30 (102.5 SENEL & 101.5 SENEL).
- American not scheduling use of MD-80s was important for the lower than expected noise readings. They have been asked to continue this protocol for the remaining six Saturday closures.



Lessons Learned from First Weekend

- Proactive and varied community outreach efforts proved very effective within LB, Signal Hill and Lakewood.
 - ✓ Very few callers were unaware of the runway project and the use of Runway25R
 - ✓ 20% of contacts were from other cities
 - Paid ads were placed in local Los Alamitos and Seal Beach
 - Ads scheduled to run for additional weeks
 - Staff will explore additional ways to notify in future



Lessons Learned from First Weekend

- FAA Air Traffic Control permitted some unrestricted climbs versus the normal leveling at 3,000 feet. This procedure has resulted in some noise reduction.
- As a result, Airport staff will encourage airlines and the FAA to maximize the use of this protocol.



LGB Flight Schedule - Saturday July 10, 2004

To/From	City	Time	Airline	Flight #	Aircraft
Arriving from	SLC	7:10 AM	JetBlue	231	A320
Arriving from	OAK	8:05 AM	JetBlue	241	A320
Arriving from	FLL	8:55 AM	JetBlue	244	A320
Arriving from	IAD	8:55 AM	JetBlue	311	A320
Arriving from	DFW	9:12 AM	American	2411	B757
Arriving from	JFK	9:50 AM	JetBlue	205	A320
Arriving from	SEA	10:38 AM	Alaska Airlines	332	B737
Arriving from	BOS	11:00 AM	JetBlue	481	A320
Arriving from	JFK	11:25 AM	JetBlue	221	A320
Arriving from	PHX	11:39 AM	America West	6093	CRJ9
Arriving from	DFW	1:35 PM	American	1343	B757
Arriving from	JFK	1:35 PM	JetBlue	209	A320
Arriving from	IAD	1:50 PM	JetBlue	305	A320
Arriving from	PHX	2:45 PM	America West	6094	CRJ9
Arriving from	OAK	2:45 PM	JetBlue	247	A320
Arriving from	LAS	2:50 PM	JetBlue	281	A320
Arriving from	IAD	4:50 PM	JetBlue	308	A320
Arriving from	SEA	4:53 PM	Alaska Airlines	338	B737
Arriving from	PHX	5:45 PM	America West	6092	CRJ9
Arriving from	LAS	6:10 PM	JetBlue	285	A320
Arriving from	OAK	7:20 PM	JetBlue	1243	A320
Arriving from	JFK	7:20 PM	JetBlue	215	A320
Arriving from	DFW	7:35 PM	American	617	B757
Arriving from	JFK	7:57 PM	American	241	B757
Arriving from	IAD	8:30 PM	JetBlue	306	A320
Arriving from	JFK	8:50 PM	JetBlue	219	A320
Arriving from	PHX	8:52 PM	America West	782	B733
Arriving from	OAK	9:25 PM	JetBlue	249	A320
Arriving from	DFW	9:33 PM	American	2021	MD83
Arriving from	SEA	9:40 PM	Alaska Airlines	342	B737
Arriving from	BOS	9:40 PM	JetBlue	489	A320
Arriving from	JFK	9:45 PM	JetBlue	217	A320

Departing to	SEA	6:45 AM	Alaska Airlines	349
Departing to	DFW	6:45 AM	American	548
Departing to	OAK	6:50 AM	JetBlue	242
Departing to	PHX	6:55 AM	America West	460
Departing to	IAD	6:55 AM	JetBlue	1304
Departing to	BOS	7:10 AM	JetBlue	1482
Departing to	DFW	8:04 AM	American	676
Departing to	JFK	8:05 AM	JetBlue	1202
Departing to	JFK	9:00 AM	JetBlue	1204
Departing to	OAK	9:55 AM	JetBlue	244
Departing to	IAD	10:05 AM	JetBlue	1307
Departing to	DFW	10:10 AM	American	1126
Departing to	JFK	10:45 AM	JetBlue	1206
Departing to	SEA	11:13 AM	Alaska Airlines	311
Departing to	LAS	12:00 PM	JetBlue	280
Departing to	PHX	12:30 PM	America West	6122
Departing to	JFK	12:30 PM	JetBlue	1222
Departing to	DFW	2:38 PM	American	376
Departing to	LAS	3:20 PM	JetBlue	284
Departing to	OAK	3:30 PM	JetBlue	250
Departing to	PHX	3:35 PM	America West	6119
Departing to	JFK	3:40 PM	JetBlue	1210
Departing to	IAD	4:00 PM	JetBlue	1310
Departing to	SEA	5:28 PM	Alaska Airlines	335
Departing to	OAK	5:50 PM	JetBlue	308
Departing to	PHX	6:25 PM	America West	6783
Departing to	SLC	7:55 PM	JetBlue	92
Departing to	FLL	8:20 PM	JetBlue	1243
Departing to	IAD	9:05 PM	JetBlue	1255
Departing to	JFK	9:15 PM	American	294
Departing to	BOS	9:15 PM	JetBlue	1488
Departing to	JFK	9:45 PM	JetBlue	1216



41

FILED
WITH CITY COUNCIL

JUL 13 2004

CITY CLERK