

# Long Beach Airport

## 2015 Noise Budget Results

City Council  
Study Session

December 8, 2015



**long beach**  
airport

1

where the going is easy®



# Airport Noise and Operations Monitoring System (ANOMS™)

18 Noise Monitors

6 Regulatory Noise Monitors  
with SENEL Limits

Including:

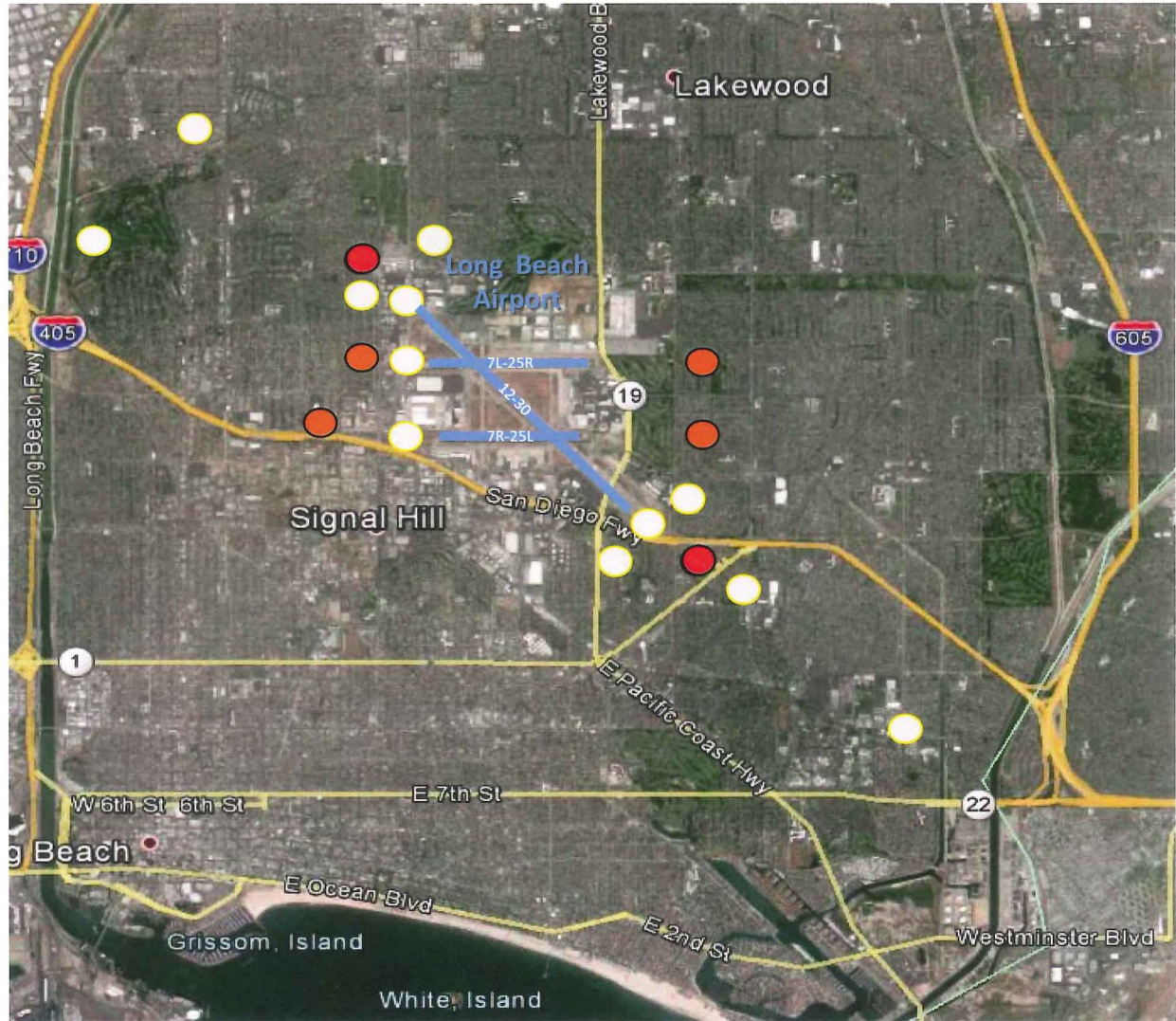
2 Noise Budget Monitors  
with CNEL Limits (Noise Budgets)



**long beach**  
airport

2

where the going is easy®





# Noise Data

Reviewed each Quarter

Annual Noise Budget Analysis and Evaluation is conducted at the close of each Noise Year (October 1 through September 30) and compared to 1989/90 noise levels.

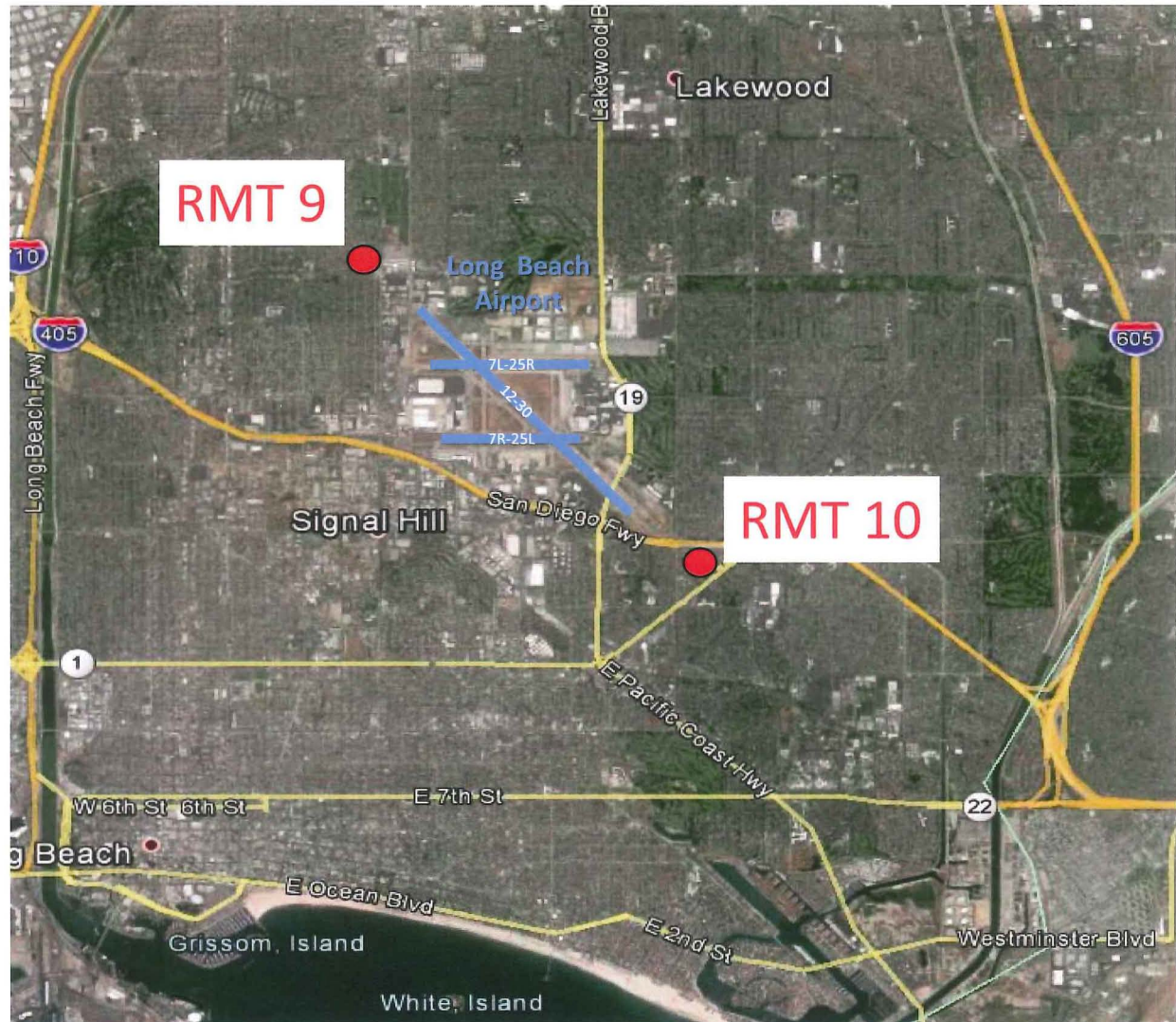
Required by Airport Noise Compatibility Ordinance (LBMC 16.43)



**long beach**  
airport

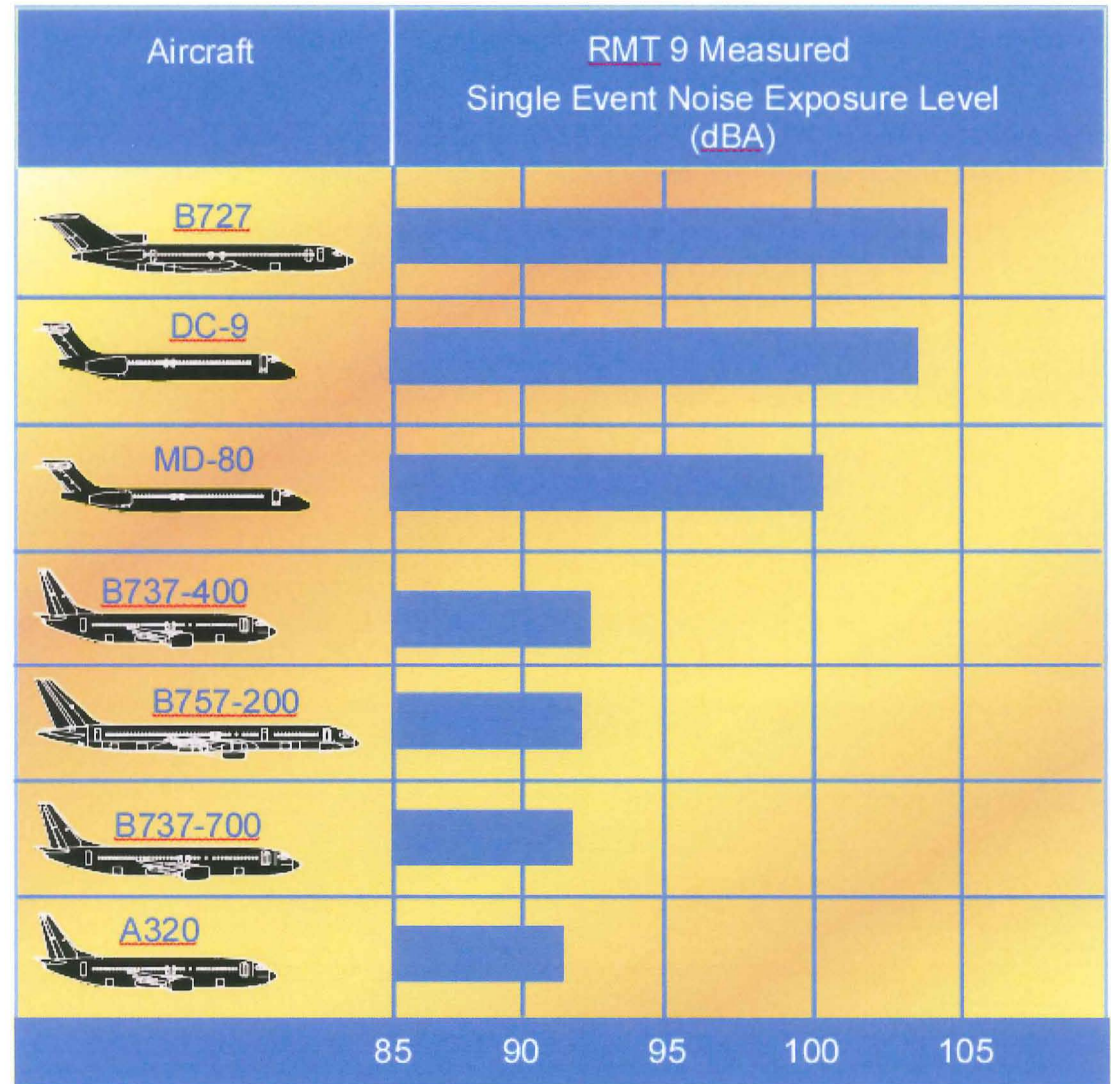
3

where the going is easy®



# Air Carrier Noise Levels

Aircraft have gotten quieter over time.



**long beach**  
airport

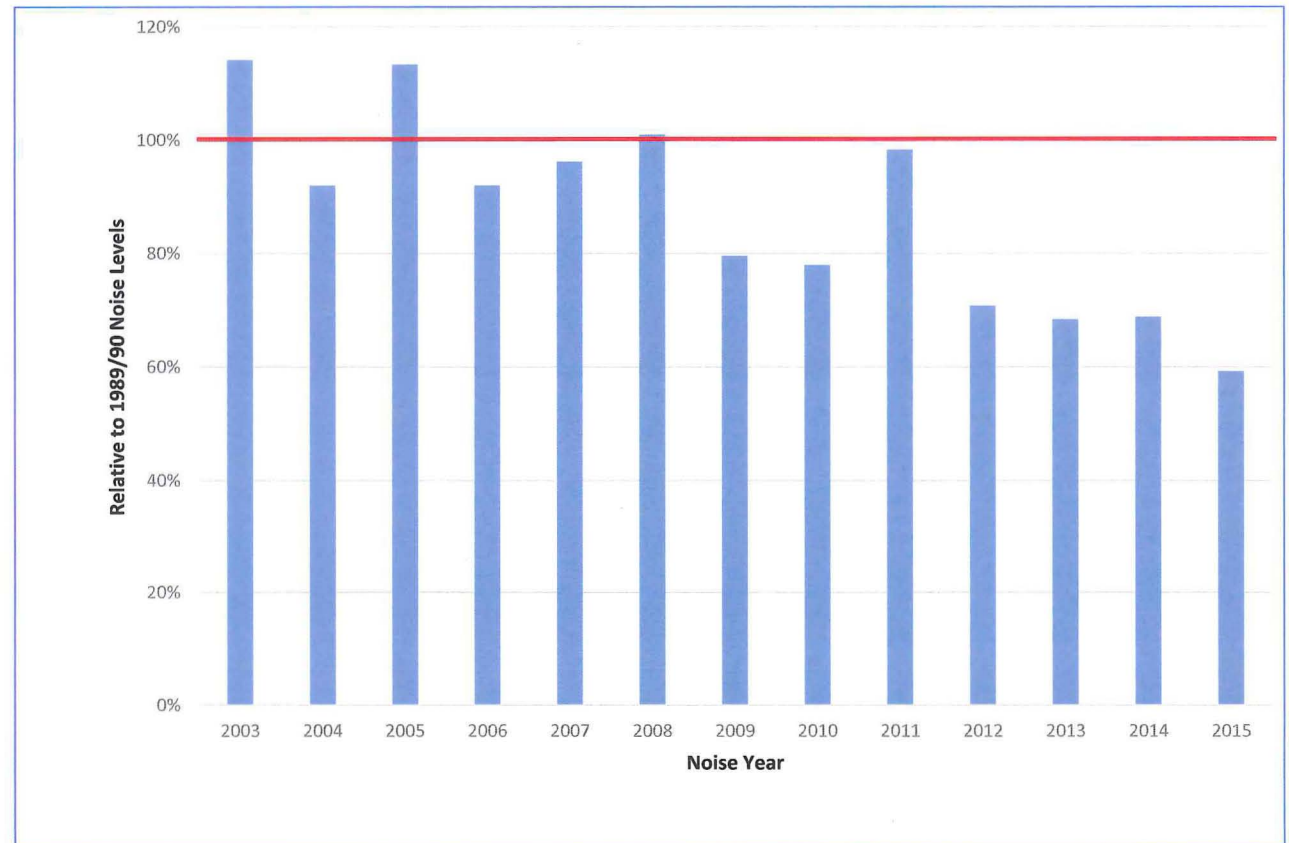


# Air Carrier Noise Levels

As aircraft have gotten quieter, Airport noise levels have been reduced.

## RMT 9

Actual Noise Levels compared to  
Baseline 1989/90 Noise Limits



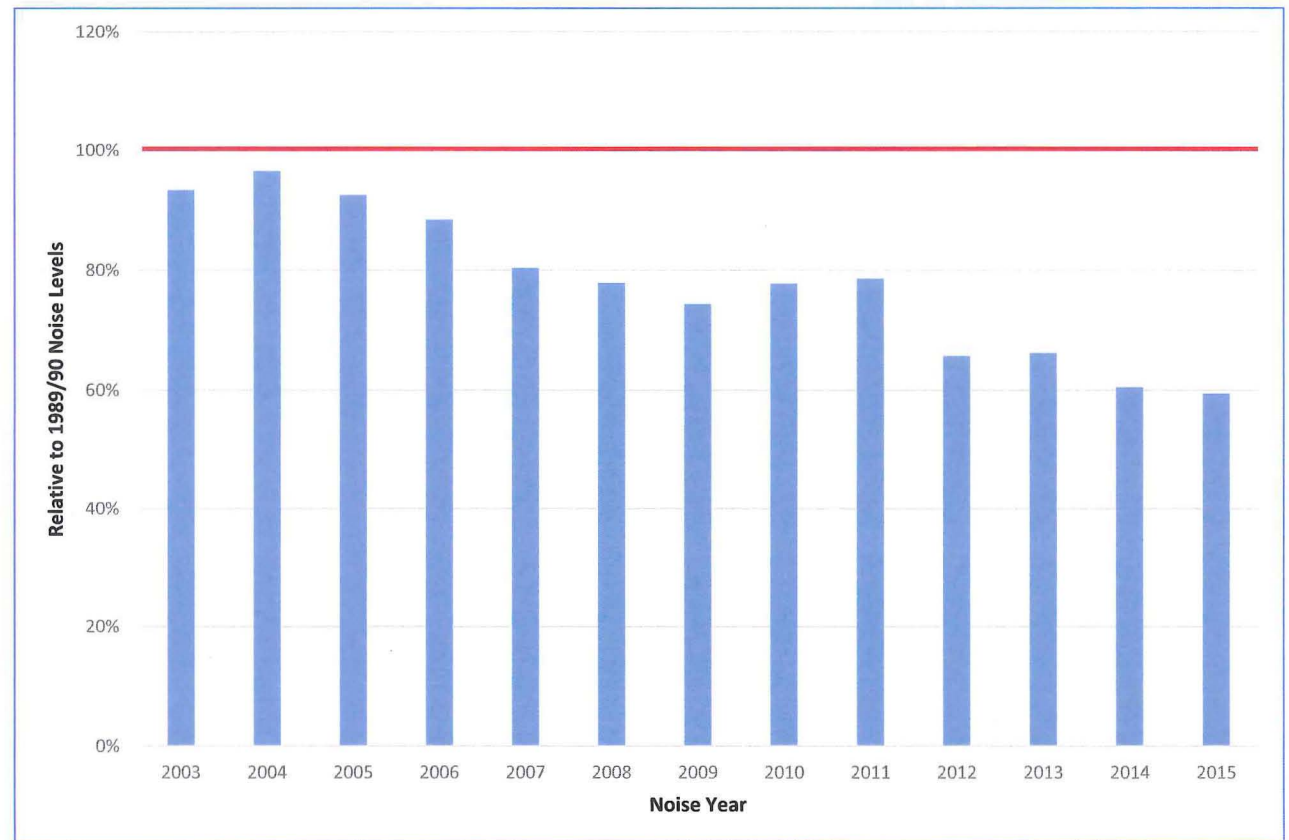
**long beach**  
airport

# Air Carrier Noise Levels

As aircraft have gotten quieter, Airport noise levels have been reduced.

## RMT 10

Actual Noise Levels compared to  
Baseline 1989/90 Noise Limits



**long beach**  
airport

# Air Carrier Noise Levels

As aircraft have gotten quieter, Airport noise levels have been reduced.

The Airport Noise Compatibility Ordinance Requires Action

***In order to achieve applicable noise budgets, users within the Air Carrier category will be encouraged to operate at the lowest average noise level consistent with safety. This encouragement will be provided by permitting increases in the number of allowed Air Carrier Flights if the Air Carrier user group achieves compliance with the CNEL budget established pursuant to this Chapter, as determined on an annual basis.***

LBMC 16.43.060.E.2

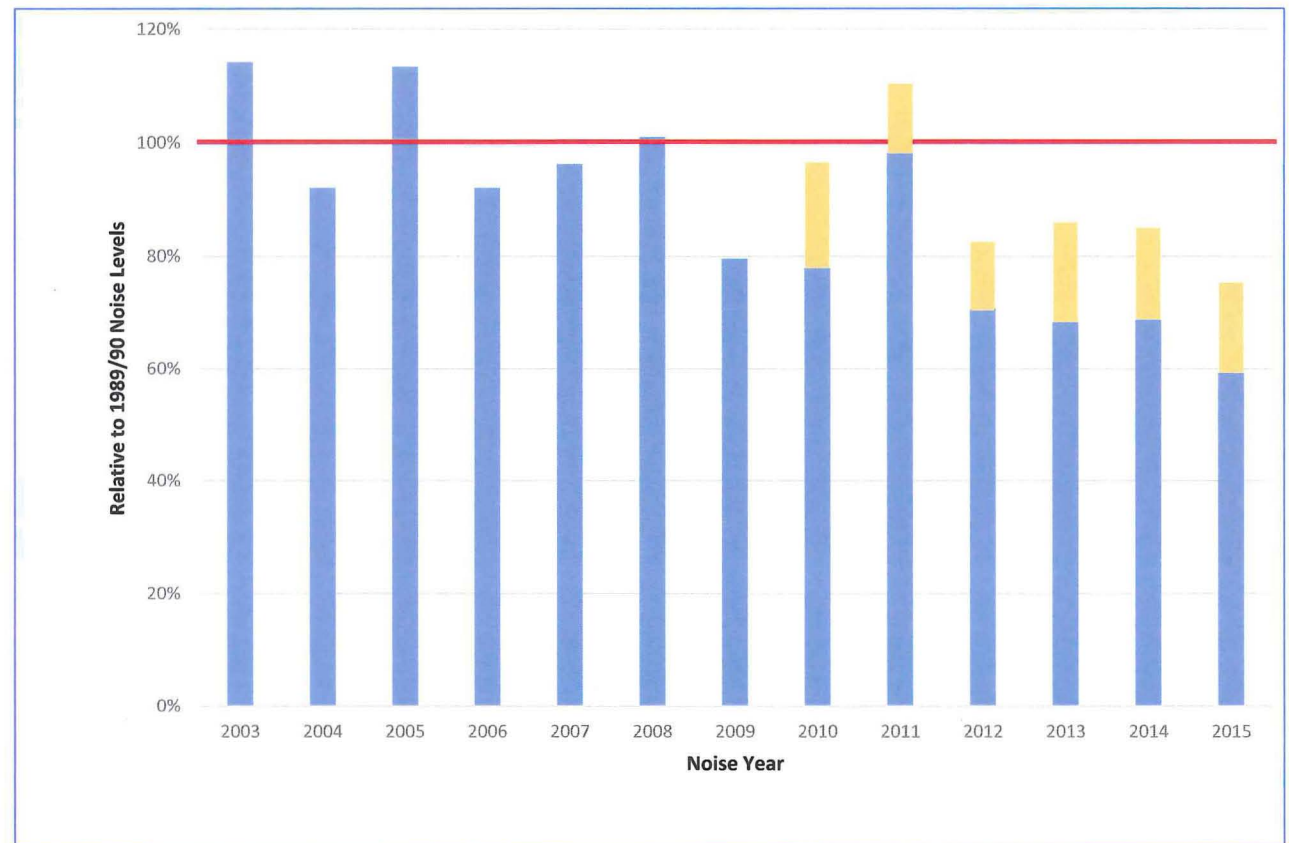


**long beach**  
airport

# Air Carrier Noise Levels + 95% Flight Slot Utilization

## RMT 9

Noise Levels compared to  
Baseline 1989/90 Noise Limits



**long beach**  
airport



# Air Carrier Noise Levels + 95% Flight Slot Utilization

## RMT 10

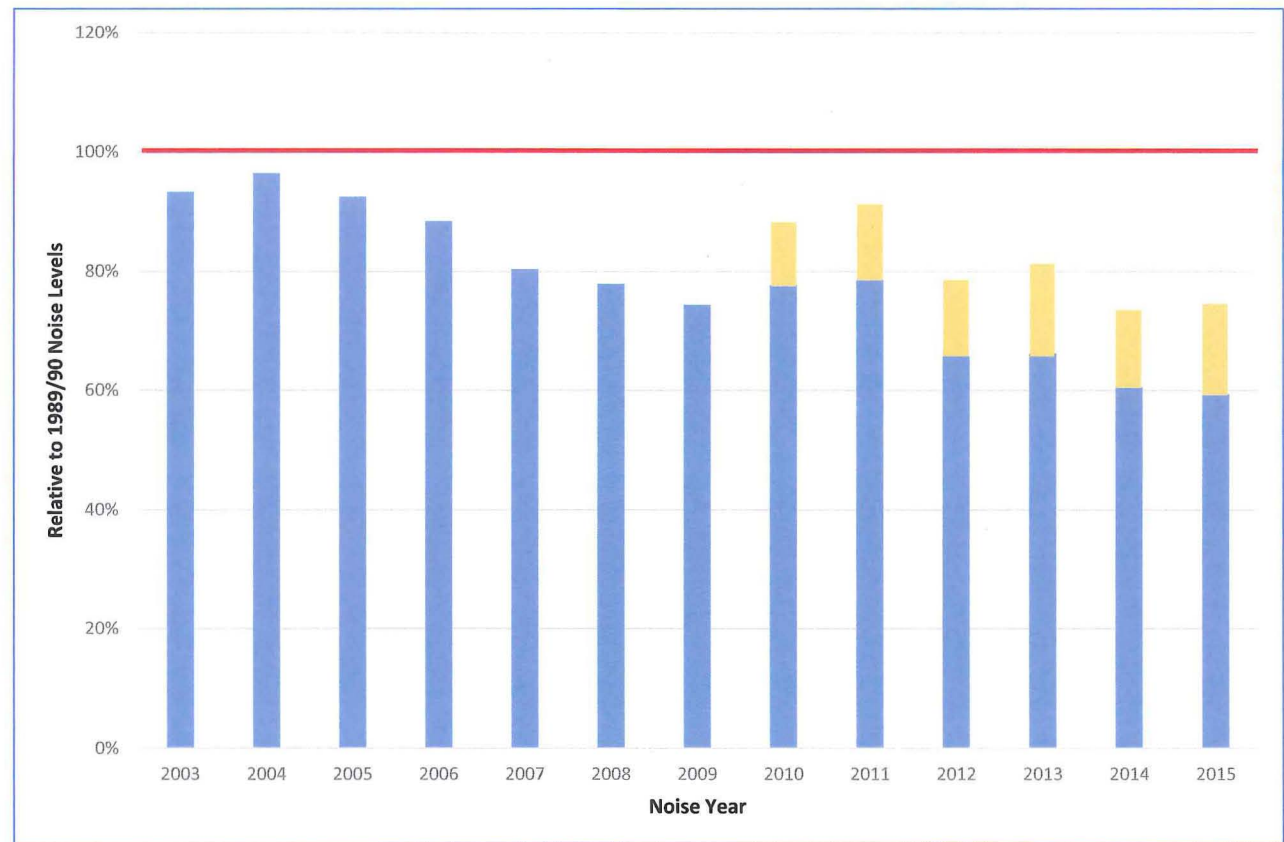
Noise Levels compared to  
Baseline 1989/90 Noise Limits



**long beach**  
airport

9

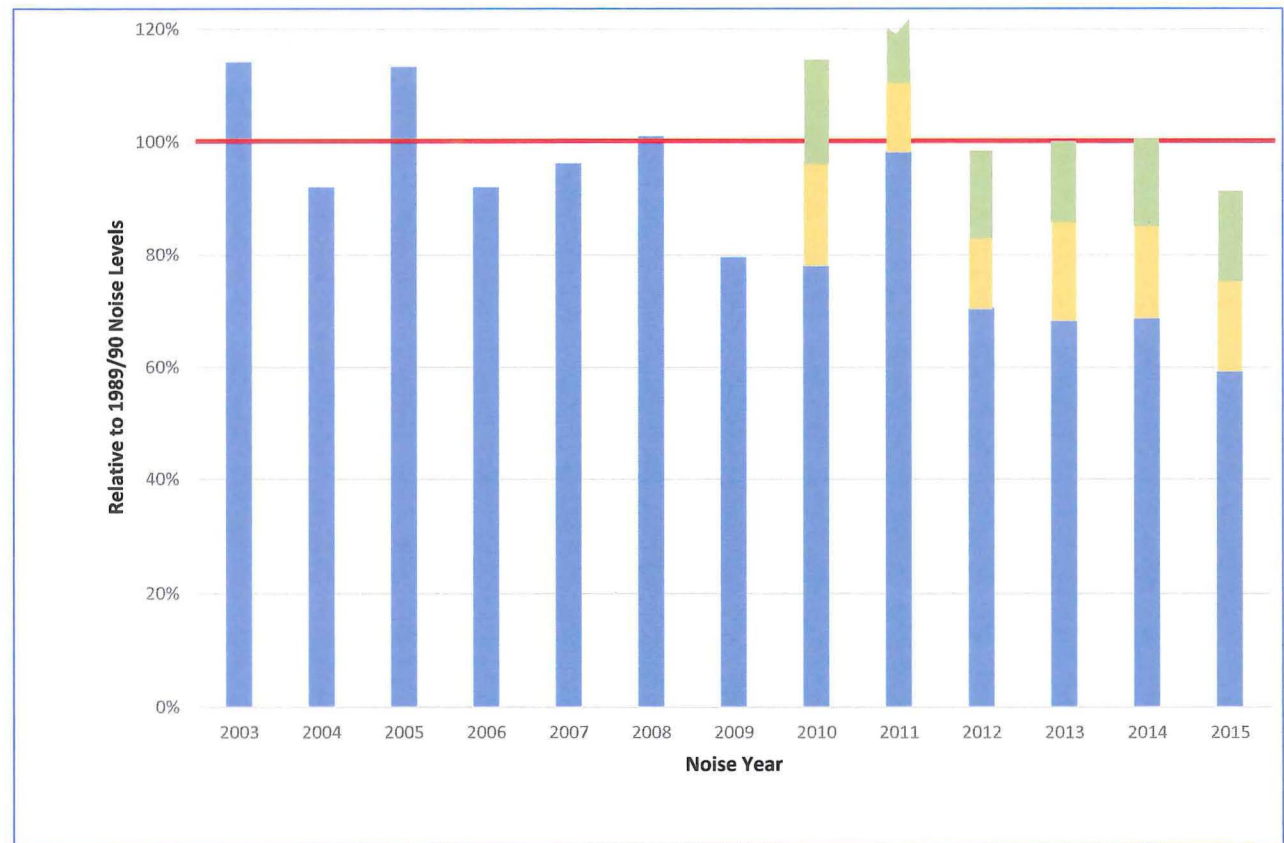
where the going is easy®



# Air Carrier Noise Levels + 95% + 9 Flight Slot Utilization

## RMT 9

Noise Levels compared to  
Baseline 1989/90 Noise Limits



**long beach**  
airport

# Air Carrier Noise Levels + 95% + 9 Flight Slot Utilization

## RMT 10

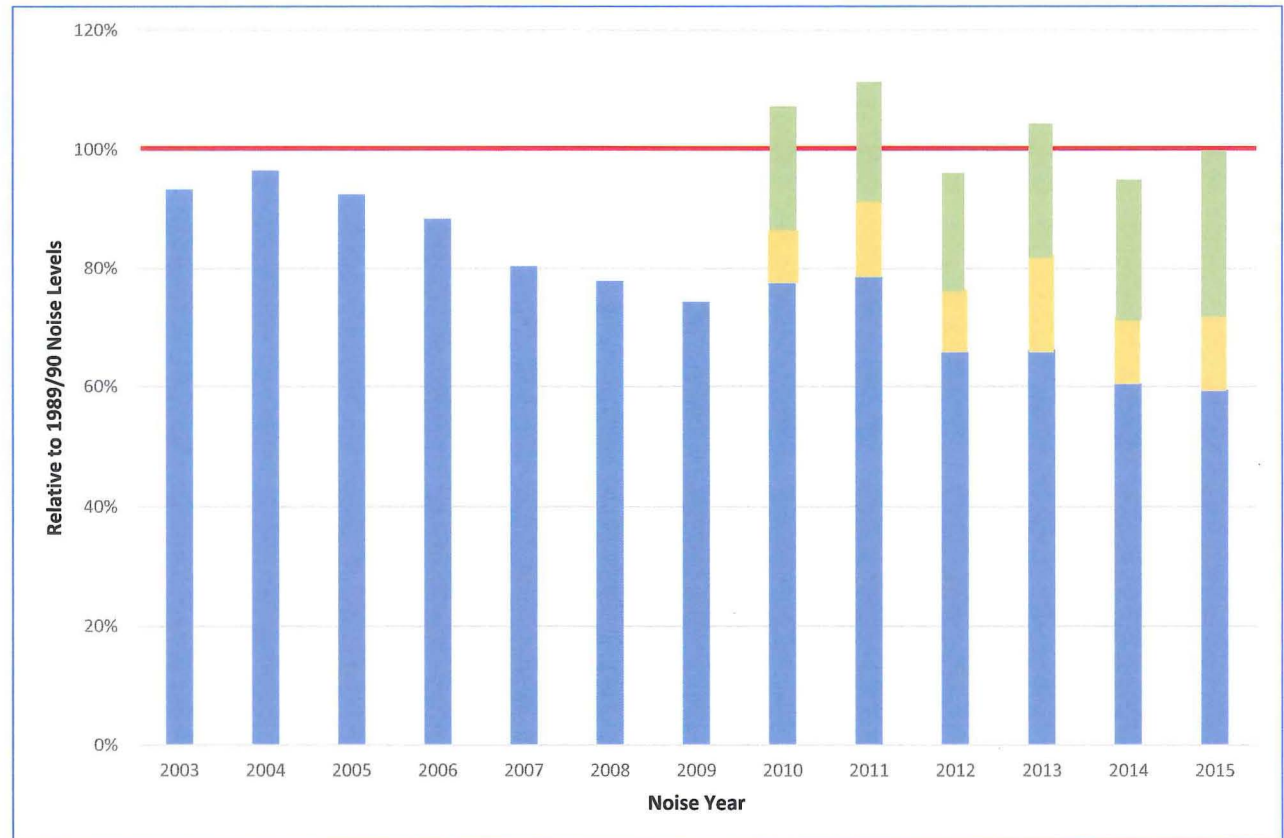
Actual Noise Levels compared to  
Baseline 1989/90 Noise Limits



**long beach**  
airport

11

where the going is easy®





# Summary

This action is required by the Noise Ordinance.

The conclusions and recommendations are based on long-term empirical data and established trends.

This action is required to preserve and protect the Noise Ordinance.

We must add 9 additional flight slots.



**long beach**  
airport

12

where the going is easy®



# Next Steps

Initiate the flight slot allocation process.

Notify air carriers of slot availability.

Carriers notify the Airport of interest.

Award of slots based on an established protocol. (30 days)



**long beach**  
airport

13

where the going is easy®



# Long Beach Airport

## 2015 Noise Budget Results

# Thank You



**long beach**  
airport

14

where the going is easy®





# Long Beach Airport

## 2015 Noise Budget Results

# Questions?



**long beach**  
airport

15

where the going is easy®

