



CITY OF LONG BEACH

C-20

DEPARTMENT OF PUBLIC WORKS

333 WEST OCEAN BOULEVARD • LONG BEACH, CA 90802 • (562) 570-6383 • FAX (562) 570-6012

October 23, 2007

HONORABLE MAYOR AND CITY COUNCIL
City of Long Beach
California

RECOMMENDATION:

Request the City Attorney to accept an easement deed for the widening of the Carson Street right-of-way adjacent to Douglas Park. (District 5)

DISCUSSION

The Douglas Park development will include the construction of a landscaped bicycle path along Carson Street west of Lakewood Boulevard. In order to construct this public improvement, the subject easement is being dedicated. Eighteen feet of additional right-of-way is needed, as shown on the attached Exhibit A.

This matter was reviewed by Deputy City Attorney Lori A. Conway on August 27, 2007. In conformance with the California Environmental Quality Act, Environmental Impact Report No. 2001051048 was certified for this project.

TIMING CONSIDERATIONS

City Council action on this matter is not time critical.

FISCAL IMPACT

A document processing fee of \$490 was paid by the developer and deposited in the General Fund (GP) in the Department of Public Works (PW).

AIRPORT
4100 Donald Douglas Dr.
Long Beach, CA 90808
Ph. (562) 570-2600
Fax (562) 570-2601

**BUSINESS OPERATIONS
BUREAU**
333 W. Ocean Blvd., 9th Floor
Long Beach, CA 90802
Ph. (562) 570-6383
Fax (562) 570-6012

**ENGINEERING & STREET
MAINTENANCE**
333 W. Ocean Blvd., 9th Floor
Long Beach, CA 90802
Ph. (562) 570-6634
Fax (562) 570-6012

**ENVIRONMENTAL
SERVICES**
2929 E. Willow Street
Long Beach, CA 90806
Ph. (562) 570-2850
Fax (562) 570-2861

**FACILITIES
BUREAU**
333 W. Ocean Blvd., 9th Floor
Long Beach, CA 90802
Ph. (562) 570-5786
Fax (562) 570-6012

**FLEET
SERVICES**
2600 Temple Avenue
Long Beach, CA 90806
Ph. (562) 570-5400
Fax (562) 570-5414

**TRAFFIC &
TRANSPORTATION**
333 W. Ocean Blvd., 10th Floor
Long Beach, CA 90802
Ph. (562) 570-6331
Fax (562) 570-7161

HONORABLE MAYOR AND CITY COUNCIL

October 23, 2007

Page 2

SUGGESTED ACTION:

Approve recommendation.

Respectfully submitted,



CHRISTOPHER J. GARNER
ACTING DIRECTOR OF PUBLIC WORKS

GMM:SC:db
PICLIROW Douglas Park Carson St ded CL.doc

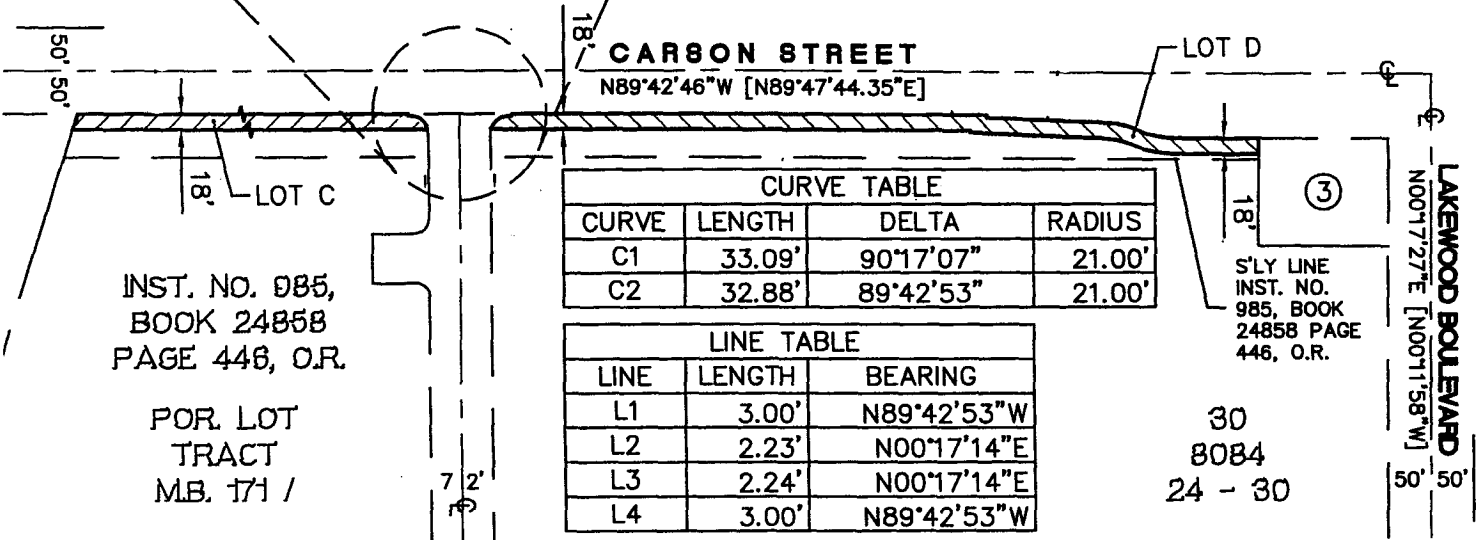
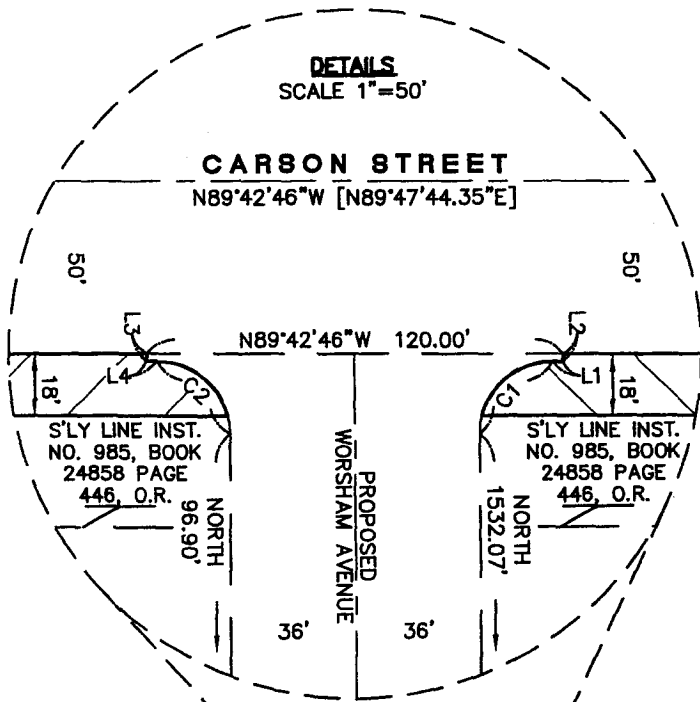
Attachment

APPROVED:



PATRICK H. WEST
CITY MANAGER

**SOUTH SIDE OF CARSON STREET
TO BE WIDENED BY 18 FEET
FOR BIKE PATH AND LANDSCAPING**



CURVE TABLE			
CURVE	LENGTH	DELTA	RADIUS
C1	33.09'	90°17'07"	21.00'
C2	32.88'	89°42'53"	21.00'

LINE TABLE		
LINE	LENGTH	BEARING
L1	3.00'	N89°42'53"W
L2	2.23'	N00°17'14"E
L3	2.24'	N00°17'14"E
L4	3.00'	N89°42'53"W

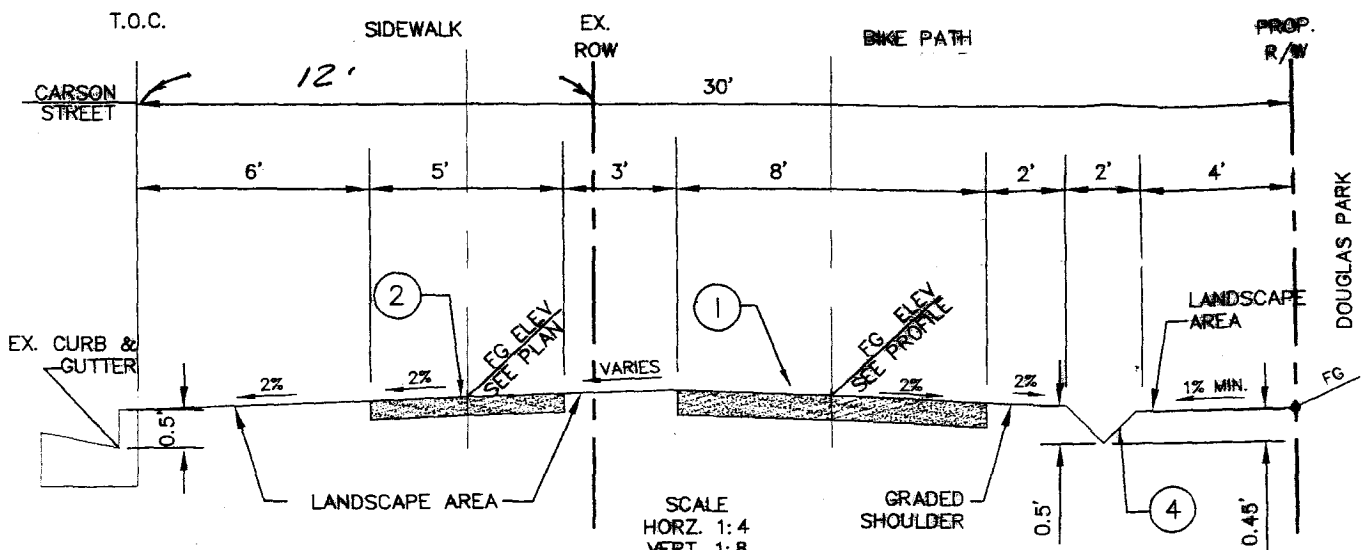


EXHIBIT A