

# **Long Beach Youth Climate Corps Program**

Sustainable City Commission

February 24, 2022

# AGENDA

1

Background

2

Program Development

3

Program Recommendations

4

Next Steps

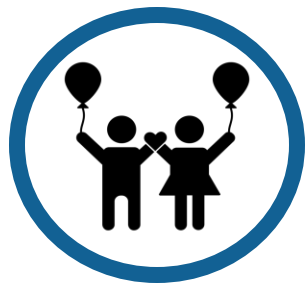


A detailed drawing of hands holding a pair of glasses. The hands are rendered with fine lines and shading, showing the texture of the skin and the details of the fingers. The glasses have a reddish-brown frame. In the background, there are vertical yellow and blue stripes. On the left side, a person's face is partially visible, showing a large eye and dark hair. The overall style is that of a fine-line drawing or a detailed sketch.

# LB YOUTH CLIMATE CORPS BACKGROUND

# STATE GRANT PROGRAM FUNDING

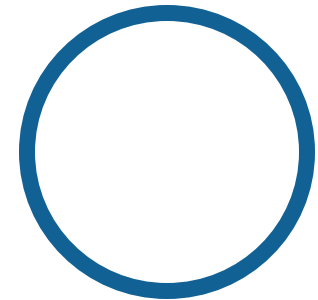
- The 2021 CA State Budget allocates \$150 million to support youth workforce job development in California's 13 largest cities to aid in recovery efforts
- Grant funding allocated through the 2021 Californians For All Youth Workforce Development Program
- Funded as a part of the Coronavirus Local Fiscal Recovery Fund established under the American Rescue Plan Act



Increase youth employment



Develop youth interest & experience towards a career in public service



Strengthen city capacity to address education, climate & food insecurity

**On November 9, 2021, City Council approved the Climate Action & Environmental Committee take up a proposal to create a \$5 million Long Beach Youth Climate Corp program and provide recommendations to the City Council**

- Long Beach is expected to receive \$6,348,277
- \$5 million is proposed to directly fund Youth Climate Corps Program
- \$1.3 million will fund administrative and staffing needs

# STATE GRANT PROGRAM PURPOSE

- The CaliforniansForAll Youth Workforce Development Program is a Governor's initiative administered by CaliforniaVolunteers in partnership with California cities
- Program brings together youth who live in underserved neighborhoods to help address urgent challenges in their communities, while simultaneously being paid to learn skills that lead to career pathways
- Cities are responsible for identifying job placements and recruit, hire, and manage youth, which may run continuously or be intermittent summer programs

# STATE GRANT FUNDING REQUIREMENTS

**Eligible Applicants:** Cities over 300,000 population

**Eligible Expenses:**

- Paid job placements for youth in public agencies/non-profits
- Wrap-around services for youth
- Administrative costs for recruiting, hiring, managing youth

**Outcomes:**

- Youth job placements in public agencies or non-profits
- After-program placement in permanent jobs

**All funding must be spent by June 2024 (CA State fiscal year)**

# STATE GRANT FUNDING REQUIREMENTS

## **Participants:**

- Must be between 16 – 30
- May have difficulty finding employment
- Are low-income
- Are unemployed and/or out of school
- Are or were justice-involved
- Are in or transitioning from foster care
- Are engaged with mental health or substance abuse system
- Priority applicants meeting two of above criteria should make up no fewer than 75% of selected participants
- Must be a minimum than \$15.00 per hour



## **Cities will be required to report the following metrics on a quarterly and annual basis to the State**

- Number of youth participating in program
- Number of youth employed in each focus area
- Number of youth enrolled in job training/readiness programs
- Number of youth completing job training/readiness programs
- Average participant wage/hours worked across the program
- Information/data/member stories as requested by CaliforniaVolunteers for annual report

A detailed drawing of hands holding a globe, with a person's face partially visible on the left. The drawing is rendered in a style that looks like a combination of pencil and colored pencil, with fine lines and soft shading. The hands are positioned around the globe, with fingers gently gripping it. The person's face on the left is partially obscured, showing only the eye and part of the nose and mouth. The background is a mix of warm and cool tones, with a prominent yellow and orange glow behind the hands, suggesting a bright light source. The overall mood is one of care and responsibility.

# LB YOUTH CLIMATE CORPS PROGRAM DEVELOPMENT

# PROGRAM DEVELOPMENT PROCESS

- Reviewed Federal, State and Regional green job efforts/reports
- Reviewed City Plans that include climate action and adaptation, sustainability and resiliency priorities that would translate into opportunities for youth job placements
  - e.g. Climate Action & Adaptation Plan, Sustainable City Action Plan, Youth & Emerging Adults Strategic Plan, Parks Strategic Plan, Mobility Element, CX3 Ped Plan, etc.
- Consulted with Conservation Corps to identify placement needs
- Consulted with City Departments to identify needs
- Evaluated using the City's Equity Toolkit and LB Recovery Act Collective Impact model



## **Civilian Climate Corps (CCC) Act of 2021 introduced in Senate March 2021 and referred to Committee (S. 1057)**

- Funds civilian workforce to support climate-based projects in partnership with a qualified youth service or conservation corps and/or disadvantaged community
- Service projects opportunities can have wide ranging goals from GHG reductions to urban greening
- Initiative supported by Executive Order 14008: Tackling the Climate Crisis at Home & Abroad

# STATE PROGRAMS



- California Climate Action Corps Fellows support organizations in engaging communities in climate action, assessment, and education projects around urban greening, edible food recovery, and wildfire prevention



- CivicSpark Fellows build capacity for local governments to address emerging environmental and social equity resilience challenges such as climate change, water resource management, affordable housing, and mobility



Los Angeles Cleantech Incubator (LACI) Report funded by the California Workforce Development Board estimates that green jobs in LA County could grow nearly 80% by 2050

## Report recommendations:

- Accelerate Economic Recovery: boost green job creation with increased public investment in green infrastructure
- Bolster Workforce Pipeline: bolster workforce training programs for growing sectors
- Advance Equity and Inclusion: increase underrepresented groups in workforce training
- Clearly Define Green Jobs and Track Metrics

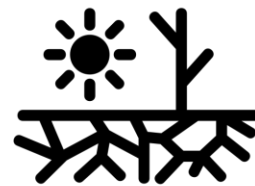


# CLIMATE ACTION & ADAPTATION PLAN (CAAP)

- The Long Beach CAAP (confirmed in Jan 2021) implements a range of actions to reduce greenhouse gas emissions and adapt to climate change impacts
- The Youth Climate Corps program could support at least 27 CAAP Implementing Actions mitigating and adapting to key climate issues:

Extreme Heat

Air Quality



Drought



Flood



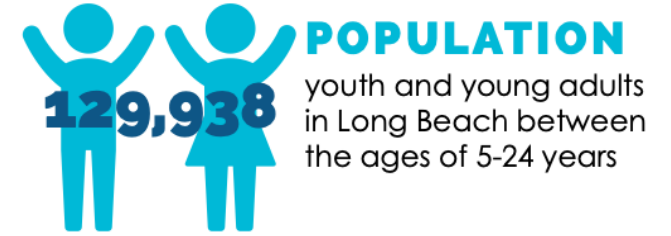
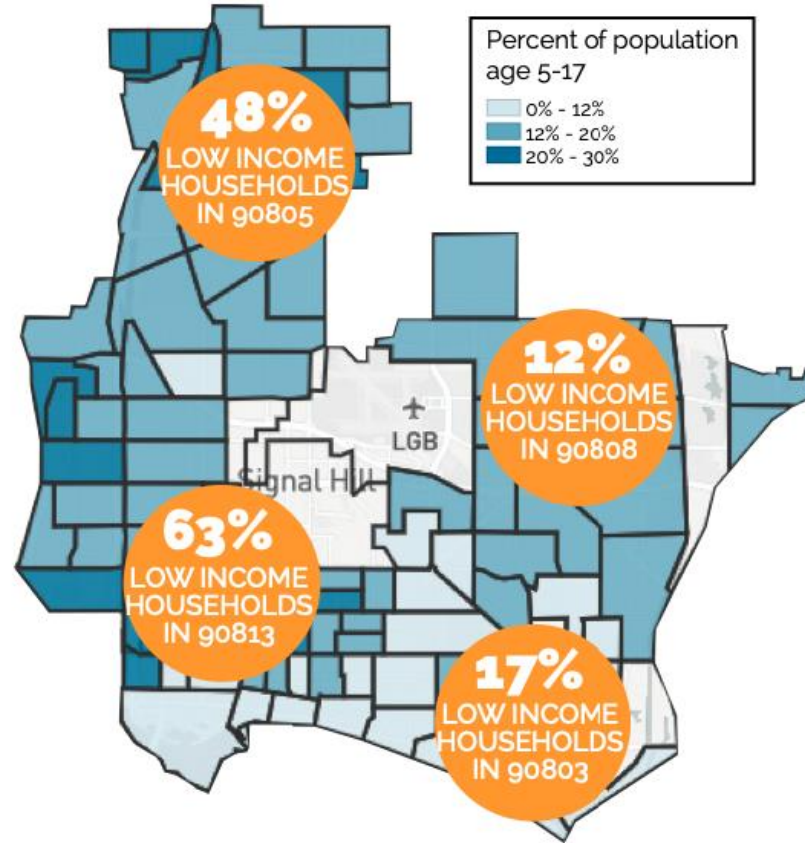
Waste

# YOUTH & EMERGING ADULTS STRATEGIC PLAN

## WHERE DO YOUTH LIVE IN LONG BEACH?

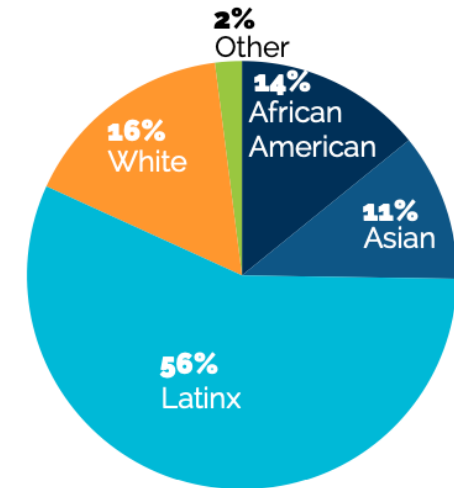
Although youth live across the entire City of Long Beach, the majority of those between the ages of 5-17 live in Central, West, and North Long Beach, which are areas with the highest rates of low income households.

**Nearly 1 in 4** (24%) Long Beach youth under the age of 18 live in families with incomes below the federal poverty level.



## RACE/ETHNICITY

The majority of Long Beach Youth and Young Adults Age 5-24 are youth of color.





# YOUTH & EMERGING ADULTS STRATEGIC PLAN



1

Mental health service access



2

Economic and educational opportunities



3

Stable and affordable housing



4

Safe spaces to belong and connect



5

Stable and affordable transportation

- Young people need education, career guidance, leadership opportunities as educational attainment strongly correlate with lifetime earning, up to 84% difference in lifetime earnings between a person with bachelor's degree vs. high school diploma
- Young people also need for a sense of belonging, creating a foundation to develop emotional intelligence, self-regulation, a growth mindset, perseverance and a vision for the future
- Pandemic has impacted learning disparities leading to permanent loss of earnings across young people's lifetime, created isolation affecting mental health, disproportionately impacting youth of color

# PROGRAM DEVELOPMENT – EQUITY

- Reviewed Racial Equity and Reconciliation Plan & Equity Toolkit
- Considered work placements that provide immediate eco-system and climate benefits that lead to long-term improvements to air and water quality, heat island reduction, community beautification, quality of life and build agency for community steward
- Particularly in communities of color disproportionately affected by environmental justice impacts



# COLLECTIVE IMPACT & STRATEGIC PLAN ALIGNMENT

Long Beach Youth Climate Corps System Goal	Youth & Emerging Adults Strategic Plan	Climate Action & Accountability Plan	Sustainable City Work Plan	Racial Reconciliation Initiative
<p><b>Increase access to pathways that expand economic &amp; social capital for youth and young adults</b></p>	<p><b>Goal: Planning for the Future</b></p> <ul style="list-style-type: none"> <li>Establish partnerships to increase access to pathways that expand economic &amp; social capital for youth</li> <li>Increase work experience opportunities in City departments by expanding the Mayor's Internship Challenge</li> </ul>	<p><b>Goal: Affordable, safe, carbon-free transportation choices connect all Long Beach communities</b> to opportunity, clean air, and improved health</p> <ul style="list-style-type: none"> <li>Prioritize development of transit-oriented neighborhoods with a mix of jobs, services &amp; housing</li> <li>Increase employment &amp; residential development along transit corridors</li> </ul>	<ul style="list-style-type: none"> <li>Training opportunities, work experience cites, pathways to green jobs</li> <li>Technical assistance to entrepreneurs that want to become part of the green economy</li> </ul>	<p><b>Advance Economic Equity</b></p> <ul style="list-style-type: none"> <li>Improve health and wellness in the City by eliminating social &amp; economic disparities in the communities most impacted by Racism</li> </ul>
<p><b>Increase programming &amp; services that promote prosocial engagement for youth &amp; youth adults, especially those that are systemic impacted</b></p>	<p><b>Goal 4: Community Care/ Social Connectedness</b></p> <ul style="list-style-type: none"> <li>Create and sustain youth-led platforms that promote inclusive spaces &amp; equity</li> <li>Engage youth in urban planning including park planning efforts</li> <li>Increase &amp; sustain programming that promotes prosocial engagement for youth &amp; emerging adults that are system impacted</li> </ul>	<p><b>CAAP identifies communities that are most affected by many sources of pollution &amp; the areas where people are often especially vulnerable to pollution effects</b></p> <ul style="list-style-type: none"> <li>Central, West and North Long Beach experience some of the highest pollution impacts in California</li> <li>These communities also face higher levels of poverty and unemployment</li> </ul>	<ul style="list-style-type: none"> <li>Education workshops, green job training programs, volunteer opportunities (e.g., Willow Springs, Operations Yard)</li> </ul>	<p><b>Equitably increase access to green jobs</b></p> <ul style="list-style-type: none"> <li>Identify sustainable funding to implement the City's Climate Action and Adaptation Plan &amp; prioritize actions that address the negative impacts of climate change for Black communities &amp; communities of color</li> </ul>
<p><b>Create healthier communities by addressing climate change through occupational training, community awareness &amp; education</b></p>	<p><b>Goal 6: Transportation</b></p> <ul style="list-style-type: none"> <li>Increase access to safe transportation</li> <li>Build capacity to increase youth engagement in activities designed to address climate change through affordable, safe, carbon-free transportation</li> </ul>	<p><b>Goal: Buildings, neighborhoods &amp; infrastructure are climate resilient, reduce the urban heat island effect &amp; are set up to ensure &amp; improve public health and safety in the face of extreme heat events</b></p> <ul style="list-style-type: none"> <li>Enhance and expand urban forest cover and vegetation</li> </ul> <p><b>Goal: All Long Beach communities have clean air &amp; improved public health</b></p> <ul style="list-style-type: none"> <li>Encourage urban agriculture practices that reduce air quality pollution</li> </ul> <p><b>Goal: Long Beach is a zero-waste city.</b></p> <ul style="list-style-type: none"> <li>Identify organic waste management options</li> </ul>	<ul style="list-style-type: none"> <li>Engage youth in activities that convert spaces to native or edible landscapes.</li> <li>Engage youth as Habitat Stewards</li> <li>Create open spaces</li> </ul>	<p><b>Improve health &amp; wellness in the City by eliminating social &amp; economic disparities in the communities most impacted by Racism</b></p> <ul style="list-style-type: none"> <li>Equitably increase access to safe green space &amp; urban nature</li> <li>Identify sustainable funding to implement the City's Climate Action &amp; Adaptation Plan &amp; prioritize actions that address the negative impacts of climate change for Black communities and communities of color</li> <li>Decrease sources of air pollution from industrial uses in Black communities &amp; communities of color</li> </ul>

# PROGRAM DEVELOPMENT – COLLECTIVE IMPACT

- The Long Beach Recovery Act, approved by City Council in March 2021, prioritize how \$250M federal recovery funding would be spent to address COVID-19 impacts for those most vulnerable
- Programs are not independent, but rather mutually reinforcing to form a coordinated approach to support lasting economic recovery and public health equity



## **Reviewed program requirements, logistics and funding timeline and thought about how this impacted placement strategies**

- Provide placements with shovel-ready opportunities
- Provide quick placement in existing City/Non-Profits programs
- Provide foundation for future skill development, training and long-term job placement
- Foster experiential stewardship by providing resources and participatory learning opportunities

A detailed drawing of hands holding a globe, with a person's face partially visible on the left. The drawing is rendered in a style that looks like a combination of pencil and colored pencil, with soft shading and fine lines. The hands are positioned around the globe, with fingers gently gripping it. The person's face on the left is partially obscured, showing only the eye and part of the nose and mouth. The background is a mix of warm and cool tones, suggesting an indoor setting with light coming from a window.

# **LB YOUTH CLIMATE CORPS PROGRAM RECOMMENDATIONS**



## Urban Greening and Natural Systems Services

- Tree planting and urban forest management
- Water efficient landscaping/irrigation installation
- Native ecosystem restoration
- Environmental stewardship, ambassador programs
- Rain gardens and rainwater rescue
- Mulch delivery program

## Types of possible placements

- City Departments (Parks, Recreation & Marine; Public Works, Office of Sustainability, Development Services)
- Non-Profit Placement Partners



## **Urban Agriculture and Food Security**

- Establishing and supporting urban farms and community gardens, Master Gardener training
- Hosting food distribution events, crop swaps and helping set up healthy market locations
- Operating public orchards and fruit tree programs

## **Types of possible placements**

- City Departments (Health & Human Services; Parks, Recreation and Marine; Office of Sustainability)
- Non-Profit Placement Partners





## **Waste Reduction and Clean Energy**

- Establishing and/or supporting recycling and composting and food waste programs
- Green Business outreach and assessments
- Rooftop solar outreach and installation

## **Types of possible placements**

- City Departments (Public Works; Office of Sustainability; Economic Development)
- Non-Profit Placement Partners

## **Pacific Gateway Workforce Innovation Network**

- Region's workforce development board
- Manages an annual budget of more than \$15M, recipient of numerous City, State and national workforce grants
- Development of training programs and the convening major employer and service partners

## **Implementation Roles**

- Recruit and hire youth program participants
- Identify climate-related placement partners
- Set up and facilitate youth training and wrap around services
- Track and report program metrics
- Identify long-term training or education pathways

## City Departments

- City Departments have ongoing climate-related including Office of Sustainability, and Departments of Development Services, Economic Development, Health & Human Services, Library Services, Public Works and Parks, Recreation and Marine

## Conservation Corps of Long Beach (CCLB)

- Has a long-term service contract with City to provide variety of environmental stewardship services supporting City's urban forestry, urban greening, urban agriculture, mulch, composting, rainwater capture, similar climate-related programs

## **Non-Profits**

- Local non-profits and community-based organizations that perform climate-related work
- Additional eligible organizations can submit their interest via City survey

## **City Department/Non-Profit Implementation Roles**

- Identify climate-related placements
- Supervise Youth Climate Corps Members
- Share potential future job opportunities

# LB YOUTH CLIMATE CORP PROGRAM IMPLEMENTATION



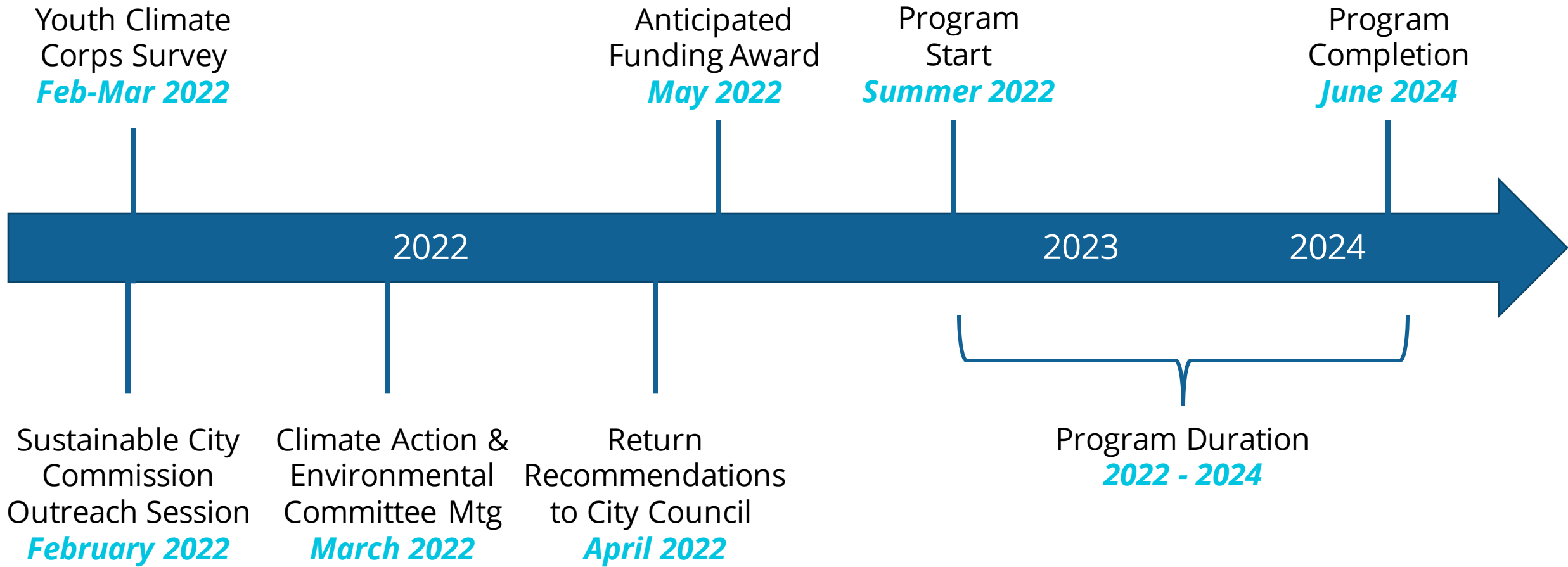
## Youth Placements

- Anticipate approximately **380 youth placements** in a variety of City Departments and Non-Profits
- Most placements will encompass approximately 450-500 hours
- Placement positions will range from entry level to more technical/advanced, earning between \$16.00-\$27.00 an hour
- Placement determinations to be made by Pacific Gateway during the intake process



# NEXT STEPS

# ANTICIPATED IMPLEMENTATION TIMELINE







## **Online survey available, closes March 10, 2022**

- Provide input on focus goal areas
- Collect interest from eligible community-based organization and non-profit placement partners
- Collect interest from eligible youth

**Available in English, Spanish, Khmer, Tagalog**

# NEXT STEPS

- Provide Program Recommendations to the Climate Action and Environmental City Council Committee (March 15)
- Provide Recommendations to City Council outlining the program recommendations, community feedback and action by the Climate Action and Environmental City Council Committee (anticipated April 2022)
- Program Kickoff with first youth job placements in (Anticipated Summer 2022)
- Program will be tracked and reported as a part of the Long Beach Recovery Act throughout implementation



**Thank you**

**Larry Rich**

*Sustainability Coordinator, Office of Sustainability*

[Larry.Rich@longbeach.gov](mailto:Larry.Rich@longbeach.gov)

**Eli Romero**

*Workforce Development Officer, Economic Development*

[Eli.Romero@longbeach.gov](mailto:Eli.Romero@longbeach.gov)

**Meredith Reynolds**

*Special Deputy City Manager for Recovery*

[Meredith.Reynolds@longbeach.gov](mailto:Meredith.Reynolds@longbeach.gov)