



# CITY OF LONG BEACH

OFFICE OF THE CITY MANAGER

R-24

333 West Ocean Boulevard • Long Beach, CA 90802 • (562) 570-6383 • Fax (562) 570-6012

December 3, 2013

HONORABLE MAYOR AND CITY COUNCIL  
City of Long Beach  
California

## RECOMMENDATION:

Authorize the City Manager to execute the Seventh Amendment to Contract No. 31687 with Bellingham Marine Industries, Inc., for an additional \$162,300, plus a ten percent contingency of \$16,230, for a total increase not to exceed \$178,530 to perform emergency maintenance dredging and repair of the Peter Archer Rowing Center Dock, located in the Alamitos Bay, for a revised contract amount not to exceed \$39,510,295. (District 3)

## DISCUSSION

On May 20, 2010, the City Council awarded a contract to Bellingham Marine Industries, Inc. (BMI), for the design, engineering, and construction of the Alamitos Bay Marina (ABM) rebuild (project). Due to the magnitude of the ABM project, the Department of Parks, Recreation and Marine (PRM) and BMI agreed to segregate each basin rebuild into phases.

On June 28, 2013, the City Council authorized Phase 3 of the ABM project comprised of improvements to Basin 5, that include engineering design, dredging, seawall repairs, and the replacement of the wooden dock systems.

The Peter Archer Rowing Center is a City-owned facility located at 5750 Boathouse Lane (Exhibit A). The Rowing Center is maintained and operated by the Long Beach Rowing Association, with subleases to California State University, Long Beach and Long Beach Junior Crew, for the shared use of the indoor and outdoor premises. The floating dock has suffered from an increase in sediment accretion beneath it limiting the dock's functionality during low tides and weakening its overall structural integrity. During low and extremely low tidal events, the dock rests on a mound, becomes deformed and saturated and creates a tripping hazard that must be repaired. The combination of these conditions results in the observed "crown," which continues to impact its floatation (Exhibit B). The floating dock was designed to have a low freeboard to accommodate the launching and retrieval of rowing shells. Dredging is now required to alleviate this abnormal condition, optimize the dock's usability, lengthen its useful life, and improve the public's safety.

An engineering consultant to the City performed a structural conditions assessment and concluded that the replacement of the rowing dock is not required at this time. It is estimated that with routine maintenance and minor repair, the dock would maintain a useful life of five to seven years.

HONORABLE MAYOR AND CITY COUNCIL

December 3, 2013

Page 2

Emergency maintenance dredging is required now to prevent the dock's future degradation and to take advantage of a window of opportunity when the required dredging at the Rowing Center will coincide with the dredging of ABM Basin 5. Material from both locations will be transported to the Port of Long Beach Middle Harbor fill site for beneficial reuse and will remain in an aquatic confined disposal facility.

A Memorandum of Understanding between the Department of Parks, Recreation and Marine, the Department of Public Works, and the Harbor Department with regards to the placement of dredge material was approved by the City Council on October 8, 2013 and by the Harbor Commission on October 7, 2013.

This matter was reviewed by Deputy City Attorney Gary Anderson on November 12, 2013, and by Budget Management Officer Victoria Bell on November 14, 2013.

#### TIMING CONSIDERATIONS

City Council approval of this item is requested on December 3, 2013 in order to correct the floatation of the dock to prevent tripping hazards and ensure the public's safety. Approval of this item will also allow the Project to take advantage of the Port of Long Beach Middle Harbor fill site, where the material can be placed in an aquatic confined disposal facility for beneficial reuse.

#### FISCAL IMPACT

Funding to support the contract increase of \$178,530 is budgeted in the Tidelands Operations Fund (TF 401) in the City Manager Department (CM). Approval of this recommendation will provide continued support to the local economy.

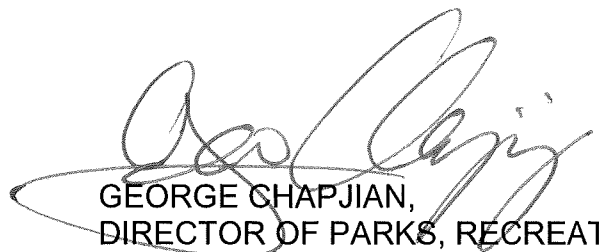
#### SUGGESTED ACTION:

Approve recommendation.

Respectfully submitted,



PATRICK H. WEST  
CITY MANAGER



GEORGE CHAPJIAN,  
DIRECTOR OF PARKS, RECREATION  
AND MARINE

AM:EOL:av

P:/Peter Archer Rowing.v.2

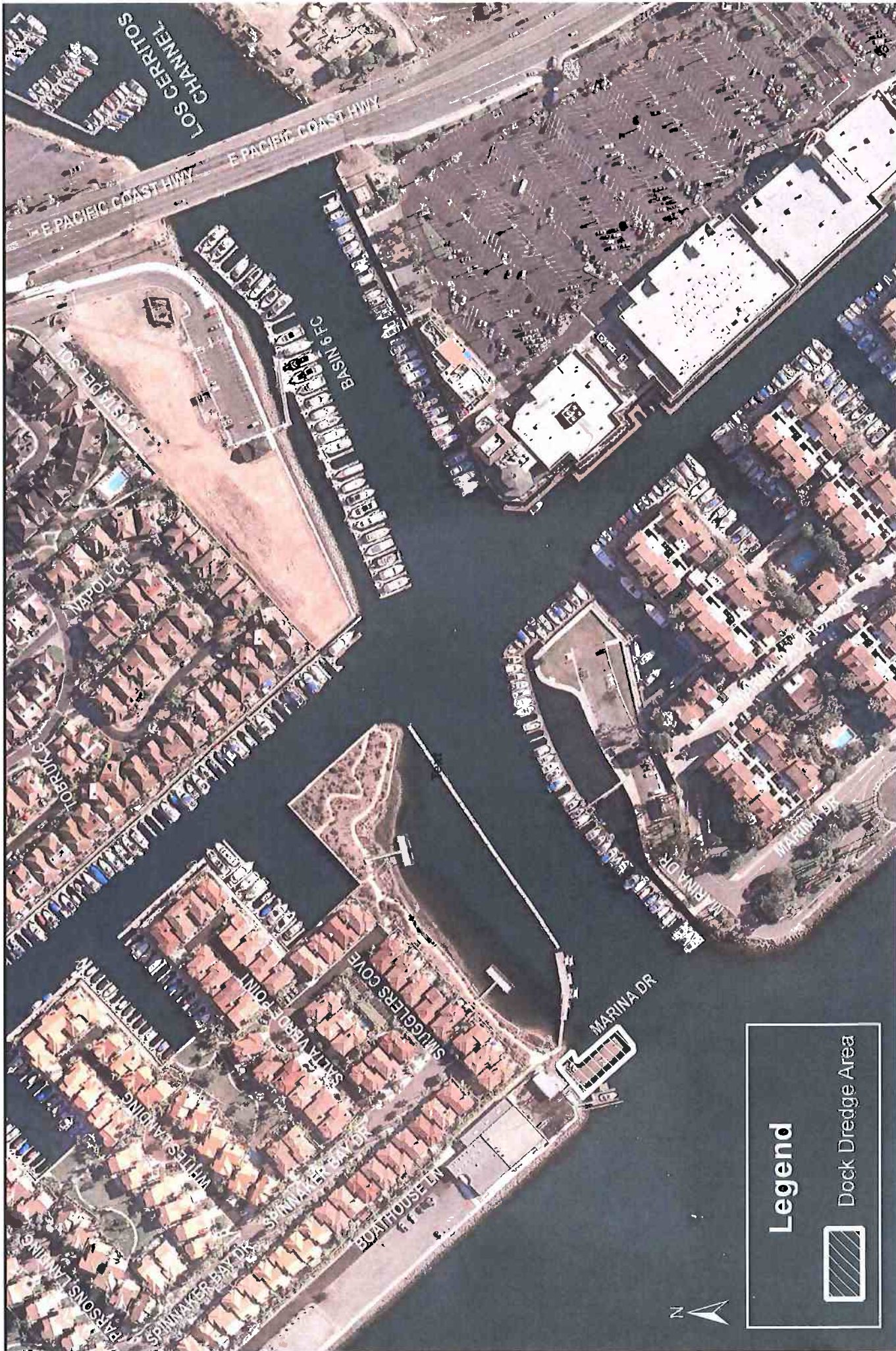
Attachments:

Exhibit A – Site Map

Exhibit B – Dock photograph



**Location Map**  
Peter Archer Rowing Center  
Proposed Dredge Area





Existing Conditions

