



CITY OF LONG BEACH

AS SUCCESSOR AGENCY TO THE REDEVELOPMENT AGENCY OF THE CITY OF LONG BEACH

333 West Ocean Blvd., Long Beach, CA 90802 Phone: 562.570.6615 Fax: 562.570.6215

July 24, 2012

SUCCESSOR AGENCY TO THE REDEVELOPMENT AGENCY
OF THE CITY OF LONG BEACH
City of Long Beach
California

RECOMMENDATION:

Approve and authorize the City Manager to execute a contract amendment with AECOM Contracting Company in an amount not to exceed \$93,000 for construction support for completion of Phase II of the Westside Storm Drain and Pump Station Improvement Project; and

Amend the Enforceable Obligation Payment Schedule and Recognized Obligation Payment Schedule as necessary to reflect such additional payments. (District 1)

DISCUSSION

In the Fall of 2005, the former Redevelopment Agency of the City of Long Beach (Agency) approved a contract with AECOM Contracting Company (AECOM) (formerly known as DMJM+Harris) for the research and design of a storm drain improvement plan to eliminate flood conditions in the West Catch Basin and the West Long Beach Industrial Redevelopment Project Area. The contract was approved as part of the implementation plan for the conditions identified in the 2004 West Long Beach Industrial Strategy Action Plan.

In March 2008, the Agency approved an amendment to increase AECOM's contract from \$608,000 to \$1,318,000 to provide an extensive Hydrology and Hydraulics Report (Report) due to land constraints. The final Report recommendation included diverting a part of the drainage area from SD-23 to drainage area SD-03, and completing the upgrade to the existing pump station location SD-03, including electrical, mechanical and structural elements (Exhibit A - Project Map). Construction of Phase I commenced June 2009 and was completed late 2010. Phase II, including the pump station improvements, is currently underway and is due to be completed in October 2012. Phase II is an approved enforceable obligation, as certified by the Department of Finance on May 25, 2012.

AECOM's additional services are needed to provide construction support through the end of the pump station project, on an as-needed basis. Successor Agency approval is, therefore, now required to formally increase the AECOM contract amount and to amend the Enforceable Obligation Payment Schedule and Recognized Obligation Payment Schedule as necessary.

SUCCESSOR AGENCY TO THE REDEVELOPMENT AGENCY
OF THE CITY OF LONG BEACH

July 24, 2012

Page 2 of 2

The amendment is necessary to continue the provision of an essential service in support of an enforceable third-party obligation as authorized by Health & Safety Code Section 34177(c) and 34177(i). The maximum cost for additional services under the amendment is \$93,000. Without this amendment, the project will remain incomplete.

This matter was reviewed by Deputy City Attorney Richard Anthony on June 20, 2012, and Budget Management Officer Victoria Bell on June 29, 2012.

TIMING CONSIDERATIONS

Successor Agency action is required on July 24, 2012, in order to amend the contract with AECOM Contracting Company to continue providing construction support services for the Westside Storm Drain and Pump Station Improvement Project. This item will be submitted to the Oversight Board for its approval on August 27, 2012.

FISCAL IMPACT

This project was originally funded by the Agency's property tax increment revenue. The additional cost of \$93,000 will be appropriated in the Successor Agency Fund (SA270), in the Department of Development Services (DV), as part of a larger Successor Agency appropriation request during the fourth quarter. There is no impact to the General Fund and no local job impact associated with this recommendation.

SUGGESTED ACTION:

Approve recommendation.

Respectfully submitted,



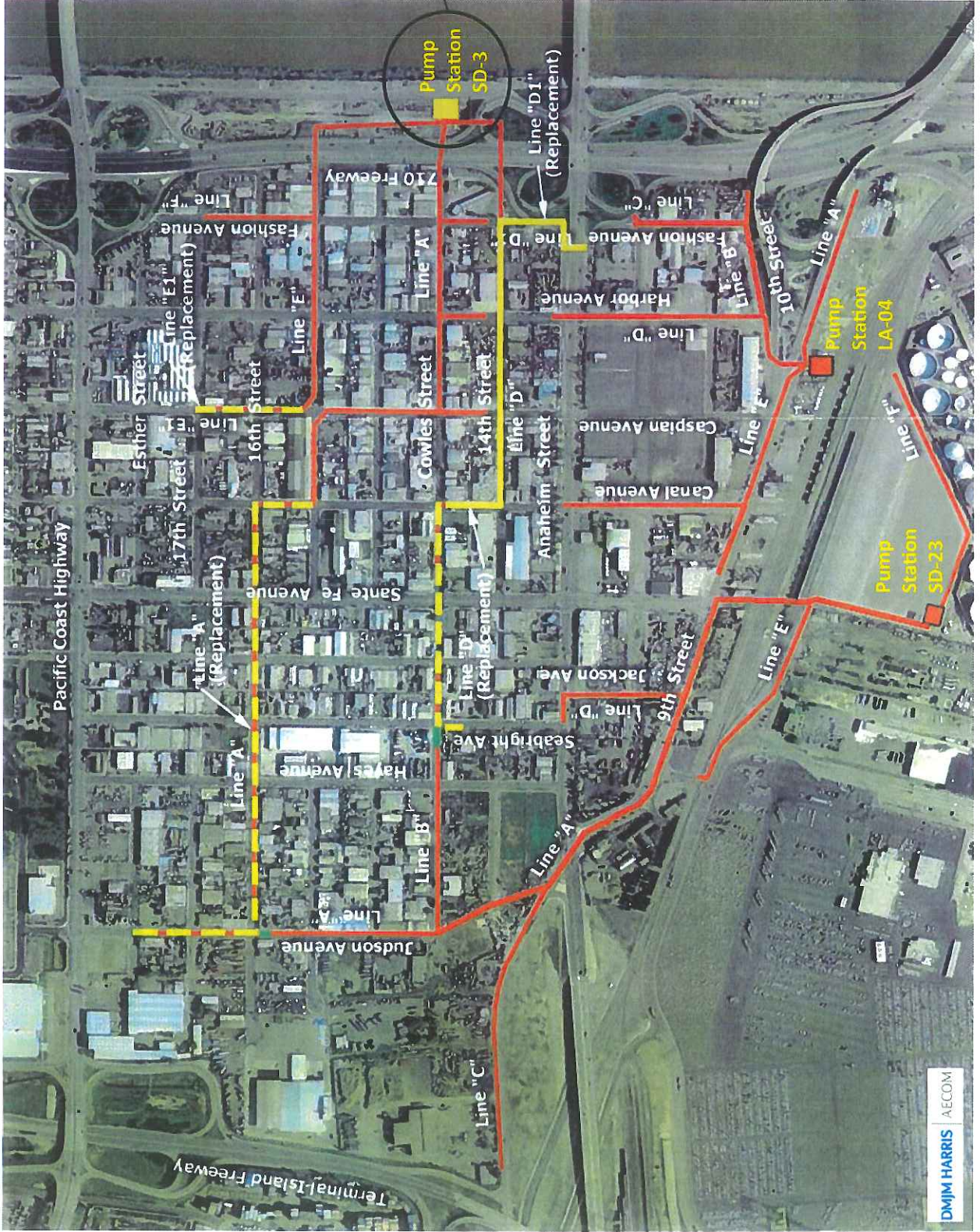
PATRICK H. WEST
CITY MANAGER

PHW:AJB:RMZ:SJ

R:\Successor Agency\SUCCESSOR AGENCY STAFF REPORTS\2012\July\AECOM - V4.doc

Attachment: Exhibit A – Project Map

Exhibit A - Project Map



City of Long Beach

Westside Storm Drain Improvements

Phase II
Upgrade of SD-03
Pump Station

Legend

- Existing Storm Drain (Abandon)
- Existing SD Facilities
- Completed SD (Phase I)
- Proposed SD (Phase III)

Project Phasing Plan