

Airport Advisory Commission

Karen Sherman
Chair

Glenn Ray
Vice Chair

Jeffrey Anderson

Wayne Chaney Sr.

Elizabeth Cruz

Hal Gosling

Gerald Mineghino

Jeff Rowe

Roland B. Scott, Jr.

Airport Management

Jess L. Romo, A.A.E.
Airport Director

Juan López-Rios
Deputy Airport Director

Ken Mason
Executive Assistant

Claudia Lewis
Manager of Administration
& Finance

Ambi Thurai
Engineering Officer

Dale Worsham
Administrative Officer

Fred Pena
Airport Operations Manager

Karl Zittel
Airsides Operations Officer

Stephanie Montuya-Morisky
Public Affairs Officer

Ron Reeves
Noise & Environmental Affairs
Officer



long beach
airport



Long Beach Airport Monthly Noise Report January 2017

COMMERCIAL AIRCRAFT LATE NIGHT ACTIVITY
LGB Current Month & Calendar Year-To-Date Statistics (10 PM- 7AM)
January 2017

January				CY-T-D 2017		
10PM - 11PM Activity	2017	2016	Change	2017	2016	Change
Air Carrier & Commuter Operations	2,926	1,922	52.2%	2,926	1,922	52.2%
American Airlines	1	2	-50.0%	1	2	-50.0%
Delta/SkyWest Airlines	6	0	600.0%	6	0	600.0%
FedEx	0	0		0	0	
JetBlue Airways	39	27	44.4%	39	27	44.4%
Southwest Airlines	2	0	200.0%	2	0	200.0%
UPS	0	0		0	0	
Subtotal 10PM-11PM	48	29	65.5%	48	29	65.5%
11PM- 7AM Activity	2017	2016	Change	2017	2016	Change
American Airlines	2	2	0.0%	2	2	0.0%
Delta/SkyWest Airlines	2	0	200.0%	2	0	200.0%
FedEx	0	0		0	0	
JetBlue Airways	31	13	138.5%	31	13	138.5%
Southwest Airlines	4	0	400.0%	4	0	400.0%
UPS	0	0		0	0	
Subtotal 11PM-7AM	39	15	160.0%	39	15	160.0%
TOTAL	87	44	97.7%	87	44	97.7%

Notes:

3.0% (87 of 2,926) of total commercial operations occurred between 10pm - 7am.

2.8 flights - Nightly average for all late night (10:00 PM—7:00 AM) commercial flights, includes unanticipated delays.

1.3 flights - Nightly average for commercial flights after 11 PM.

AIRPORT OPERATIONS & AIRCRAFT NOISE VIOLATIONS

LGB Current Month & Calendar Year-To-Date Statistics

January 2017

January				CY-T-D 2017		
Air Carrier Noise Violations	2017	2016	Change	2017	2016	Change
American Airlines	0	1	-100.0%	0	1	-100.0%
Delta/SkyWest Airlines	1	0	100.0%	1	0	100.0%
FedEx	0	0		0	0	
JetBlue Airways	27	2	1,250.0%	27	2	1,250.0%
Southwest Airlines	1	0	100.0%	1	0	100.0%
UPS	0	0		0	0	
Subtotal	29	3	866.7%	29	3	866.7%
Commuter Noise Violations	2017	2016	Change	2017	2016	Change
American/Mesa Airlines	0	0		0	0	
Delta/SkyWest Airlines	0	0		0	0	
Subtotal	0	0		0	0	
Non-Commercial Noise Violations	2017	2016	Change	2017	2016	Change
All GA, Charter & Other	17	17	0.0%	17	17	0.0%
TOTAL	46	20	130.0%	46	20	130.0%
Monetary Fines						
Airport Surcharges	\$1,700	\$1,200		\$1,700	\$1,200	
Consent Decree	\$144,000	\$6,000		\$144,000	\$6,000	
TOTAL	\$145,700	\$7,200		\$145,700	\$7,200	
Airport Operations (FAA)	2017	2016	Change	2017	2016	Change
Air Carrier + Commuter Carriers	2,926	1,922	52.2%	2,926	1,922	52.2%
Air Taxi + General Aviation	20,253	22,036	-8.1%	20,253	22,036	-8.1%
Military Operations	86	166	-48.2%	86	166	-48.2%
Total Aircraft Operations	23,265	24,124	-3.6%	23,265	24,124	-3.6%

Notes:

0.2% (46 of 23,265) of the Airport's total aircraft operations (Commercial & GA) resulted in an aircraft noise violation.
 1.0% (29 of 2,926) the Airports Commercial operations (Commercial & Commuter) resulted in an aircraft noise violation.

AIRCRAFT NOISE VIOLATORS

January 2017

OWNERNAME	DATE	TIME	A/D	RWY	A/C TYPE	SEL	LIMIT	STATUS
Aircraft Holding Company One LLC	1/1/2017	5:40:27	D	30	H25B	82.8	79.0	VIO
Traylor Bros Inc	1/1/2017	6:20:01	D	30	BE40	93.7	90.0	VIO
JetBlue Airways Corporation	1/2/2017	23:24:07	D	30	A320	91.2	79.0	VIO + Alt Enf
JetBlue Airways Corporation	1/3/2017	23:47:06	D	30	A320	95.8	79.0	VIO + Alt Enf
JetBlue Airways Corporation	1/4/2017	0:57:26	A	30	A320	93.3	79.0	VIO + Alt Enf
JetBlue Airways Corporation	1/4/2017	23:58:24	D	30	A320	91.6	79.0	VIO + Alt Enf
Two Creeks Partners LLC	1/5/2017	0:03:27	A	30	CRJ2	91	79.0	VIO
JetBlue Airways Corporation	1/5/2017	0:36:08	D	30	A320	90.9	79.0	VIO + Alt Enf
JetBlue Airways Corporation	1/5/2017	2:40:40	A	30	A320	92.8	79.0	VIO + Alt Enf
Southwest Airlines Co.	1/5/2017	23:29:16	A	30	B737	94.7	79.0	VIO
Delta Air Lines / SkyWest Airlines	1/5/2017	23:31:14	A	30	CRJ9	90.8	79.0	VIO
Olympia Aviation LLC	1/6/2017	0:12:41	D	30	DC9	96.5	79.0	VIO
JetBlue Airways Corporation	1/6/2017	0:19:46	A	30	A320	94.5	79.0	VIO + Alt Enf
JetBlue Airways Corporation	1/6/2017	0:52:54	D	30	A320	95.2	79.0	VIO + Alt Enf
JetBlue Airways Corporation	1/6/2017	4:32:49	A	30	A320	94.6	79.0	VIO + Alt Enf
Paradigm Air Carriers Inc.	1/6/2017	23:14:07	D	30	B734	95.3	79.0	VIO
Worldwide Jet Charter Inc	1/7/2017	1:57:17	A	30	CL60	87.9	79.0	VIO
415NG LLC	1/7/2017	23:39:56	D	30	CL30	83.4	79.0	VIO
JetBlue Airways Corporation	1/8/2017	0:59:01	D	30	A320	94.7	79.0	VIO + Alt Enf
JetBlue Airways Corporation	1/8/2017	23:18:36	A	30	A320	94.7	79.0	VIO + Alt Enf
JetBlue Airways Corporation	1/8/2017	23:43:24	A	30	A320	95.8	79.0	VIO + Alt Enf
JetBlue Airways Corporation	1/9/2017	0:30:57	D	30	A320	89.1	79.0	VIO + Alt Enf
JetBlue Airways Corporation	1/9/2017	0:41:24	D	30	A320	92.1	79.0	VIO + Alt Enf
JetBlue Airways Corporation	1/9/2017	0:52:51	D	30	A320	88.3	79.0	VIO + Alt Enf
JetBlue Airways Corporation	1/9/2017	3:40:04	A	30	A320	94.1	79.0	VIO + Alt Enf
Valley Logistics LLC	1/9/2017	5:47:57	D	30	C510	88.2	79.0	VIO
JetBlue Airways Corporation	1/10/2017	0:10:38	A	30	A320	94.3	79.0	VIO + Alt Enf

AIRCRAFT NOISE VIOLATORS

January 2017

OWNERNAME	DATE	TIME	A/D	RWY	A/C TYPE	SEL	LIMIT	STATUS
JetBlue Airways Corporation	1/11/2017	1:01:09	A	25R	A320	93.4	n/a	VIO + Alt Enf
JetBlue Airways Corporation	1/12/2017	23:21:02	A	25R	A320	93.6	n/a	VIO + Alt Enf
Murray Company	1/13/2017	8:16:45	D	25R	C340	96.8	92.0	VIO
JetBlue Airways Corporation	1/14/2017	0:42:09	A	30	A320	93.2	79.0	VIO + Alt Enf
Swift Air LLC	1/15/2017	0:12:35	A	30	B734	95.5	79.0	VIO
Pendragon LLC	1/16/2017	20:24:19	A	25R	BE36	94.6	88.0	VIO
Venture Logistics Trust	1/17/2017	5:40:59	A	30	F900	90.5	79.0	VIO
JetBlue Airways Corporation	1/19/2017	0:01:00	A	30	A320	94	79.0	VIO + Alt Enf
JetBlue Airways Corporation	1/20/2017	23:34:13	A	30	A320	95.3	79.0	VIO + Alt Enf
Southwest Airlines Co.	1/21/2017	0:14:59	A	30	B737	95.4	79.0	VIO
JetBlue Airways Corporation	1/22/2017	23:06:00	D	30	A320	95.9	79.0	VIO + Alt Enf
JetBlue Airways Corporation	1/23/2017	0:17:13	A	30	A320	95.7	79.0	VIO + Alt Enf
JetBlue Airways Corporation	1/23/2017	0:23:05	A	30	A320	94.9	79.0	VIO + Alt Enf
JetBlue Airways Corporation	1/23/2017	23:17:45	A	30	A320	94	79.0	VIO + Alt Enf
N742AR LLC	1/23/2017	23:35:25	A	30	C525	91.5	79.0	VIO
JetBlue Airways Corporation	1/24/2017	0:07:48	A	30	A320	93.6	79.0	VIO + Alt Enf
Aikman Enterprises Inc	1/24/2017	23:15:56	A	30	H25B	90.4	79.0	VIO
DTS Engineering Contractors Inc.	1/26/2017	8:07:36	D	25R	BE36	94.5	92.0	VIO
Thunderbolt Marine Inc	1/28/2017	23:11:41	D	30	GLEX	92.7	79.0	VIO

DEFINITIONS:

A/C Type — Aircraft Type

RWY — Runway

A/D/G — Arrival / Departure / Ground Operation

SEL — SENEL — Single Event Noise Exposure Level (dBA)

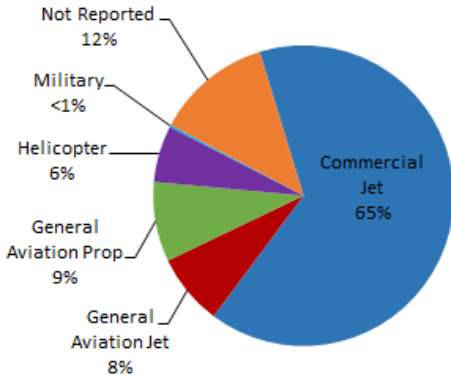
ALT ENF — Alternative Enforcement

VIO — Violation

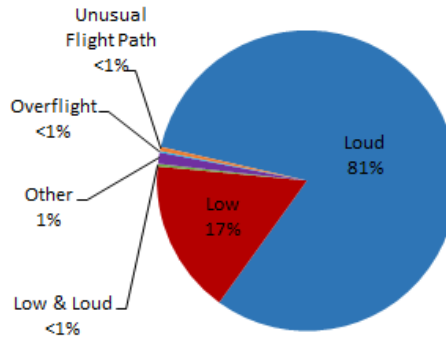
LGB AIRCRAFT NOISE COMPLAINTS

January 2017

Complaints by Aircraft Types



Complaints by Concern



Complaints by Zip Code¹

Zip Code	Complaints	Units
90254	5	1
90505	1	1
90708	1	1
90740	2	2
90807	92	14
90808	10	4
90815	11	4
92612	52	1
92626	835	2
92646	3	1
92648	218	2
92649	90	2
Not Reported	9	9
Grand Total	1,329	44

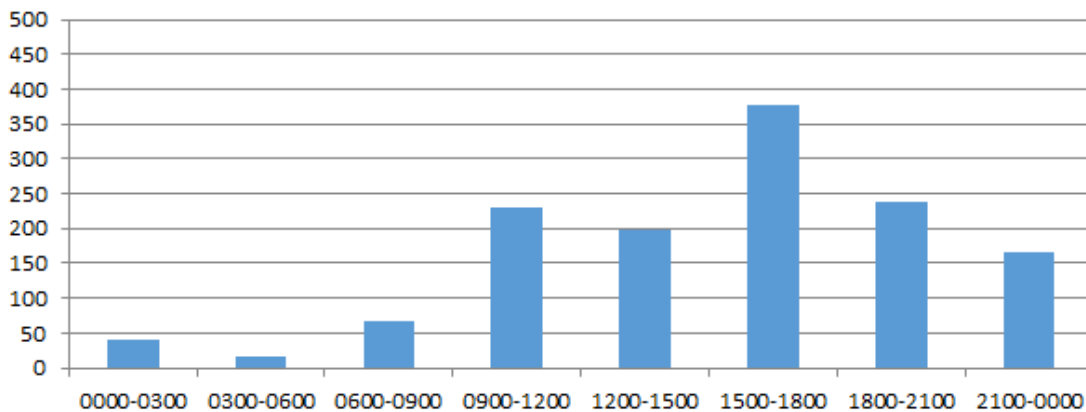
Long Beach Residents' Helicopter Complaints Submitted to FAA²

Zip Code	Individual Complaints	Number of Individuals	Anonymous Complaints	Total Complaints
90802	1	1	1	2
90803	35	6	45	80
90804	4	1	0	4
90808	6	1	25	31
90814	361	6	18	379
Grand Total	407	15	89	496

¹ These data include data submitted directly to Long Beach Airport and does not include data submitted to FAA.

² These data include helicopter noise complaints submitted directly to FAA.

Complaints by Time





long beach airport



Long Beach Airport

4100 E. Donald Douglas Drive, Long Beach, CA 90808

www.lgb.org • lgbapt@longbeach.gov

Administration • (562) 570-2619