

City Of Long Beach Arborist Report

Date: December 2nd 2005

Time: 11:30 A.M

P.M.

Location Of Tree: 2834 Eucalyptus Ave

Council District: 7

Tree Species: Eucalyptus ficifolia

DBH: 24"

Height: 40'

Condition Of Tree: Healthy Good Fair Poor

Recommendation: Trim Root Prune Surface Root Prune Removal

Comments , Recommendations , Suggestions:

The tree in question has outgrown the parkway causing hardscape damage to the sidewalk, curb, gutter, and street. The tree is also causing infrastructure damage (water/sewer lines) to private property. Work Order initiated on 04/13/05.

Picture # 1 shows how severely the roots had been cut in the past to repair the sidewalk. Tree appeared to have been destabilized by this action.

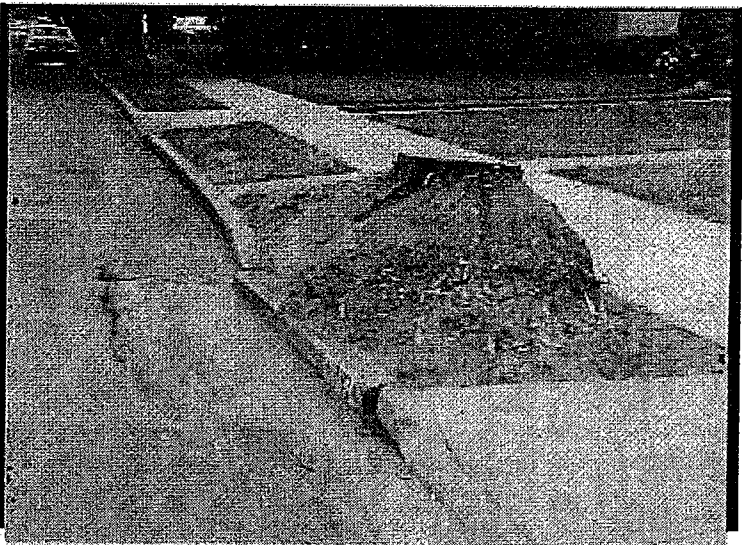
Picture #2 shows the damage done to the curb, gutter and street.

Removal of this tree was necessary due to heavy root damage

Picture # 1



Picture # 2



Certified Arborist: Kenny Patrick

Certified Arborist #: WE-6579A

Certified Arborist: Jerry Rowland

Certified Arborist #: WE-6353A