

PIEAM

PACIFIC ISLAND ETHNIC ART MUSEUM

Welcome to the Pacific Island Ethnic Art Museum (PIEAM)

When you visit the museum, you'll see

Ethnic arts and living arts from all regions
of Oceania: Micronesia, Polynesia and
Melanesia

Rotating exhibits

Community-driven exhibits

Educational
programs

Museum store

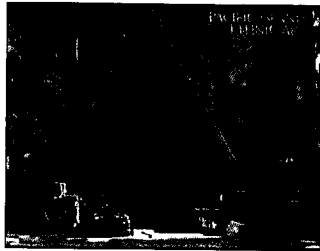
Media room

Sculpture
garden

Cultural
events

Family art programs

Event rental



1st Annual Pasifika Living Arts

May 7-8, 2011

Pacific Island Ethnic Art Museum
695 Alamitos Ave., Long Beach, CA 90802

Featuring workshops and performances
by traditional artists
and cultural specialists
from across
Pasifika's
diverse cultures

Free for museum members,
18 and under, all students
and educators with id;
\$5 general; \$3 seniors

For more info

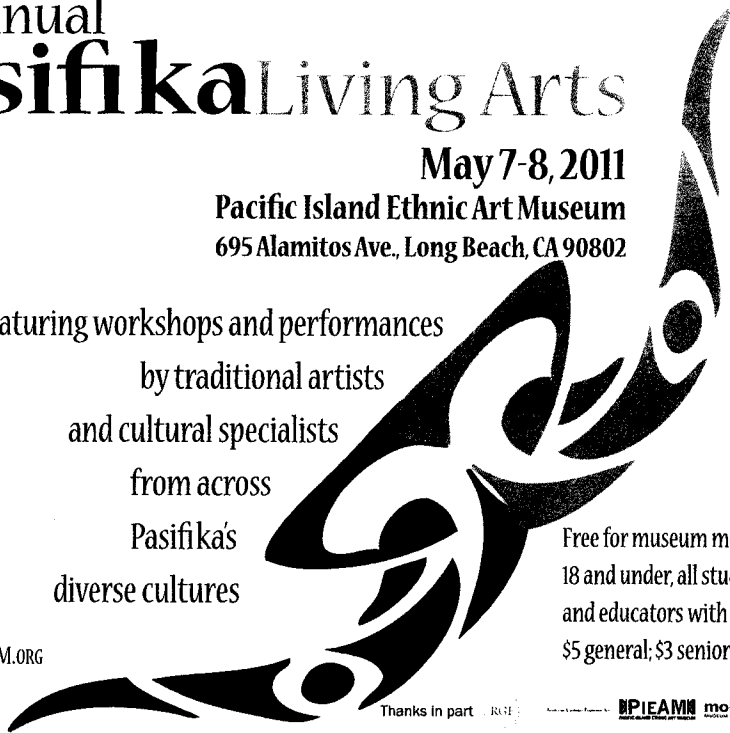
www.PIEAM.ORG

562.216.4170

info@pieam.org

Thanks in part

PIEAM molaa...



PIEAM

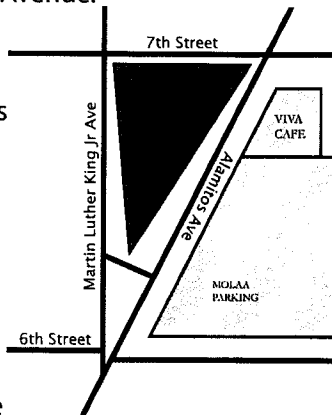
PACIFIC ISLAND ETHNIC ART MUSEUM

Directions

The Pacific Island Ethnic Art Museum (PIEAM) is located at 695 Alamitos Avenue on the triangle between East 7th Street, Martin Luther King Jr. Avenue (MLK Ave.) and Alamitos Avenue.

The main entrance faces Alamitos Avenue just south of 7th Street.

The double doors have a painted Dilukai figure directly above them.



Parking

PIEAM parking is FREE at MOLAA's parking lot, 628 Alamitos Avenue.

Contact Us

695 Alamitos Avenue
Long Beach, California 90802

t: 562-216-4170 f: 562-435-3052
info@pieam.org www.pieam.org



in Celebration of Pacific Islander Heritage Month

For the month of May, PIEAM is proud to offer:

Free admission to museum when you sign-up
for our mailing list

Spread the heritage with 2 for 1 membership purchases
ultimate levels and below (not valid with previous purchases)

For more info contact us at:
www.pieam.org info@pieam.org 562.216.4170

