



# CITY OF LONG BEACH

# C-16

DEPARTMENT OF PUBLIC WORKS

333 West Ocean Boulevard 9<sup>th</sup> Floor • Long Beach, CA 90802 • (562) 570-6383 • Fax (562) 570-6012

April 17, 2012

HONORABLE MAYOR AND CITY COUNCIL  
City of Long Beach  
California

## RECOMMENDATION:

Authorize the City Manager to grant an easement to the County Sanitation District of Los Angeles County No. 29 (LACSD) in order to upgrade the sewer pumping plant at 2000 Walnut Avenue. (District 6)

## DISCUSSION

LACSD is requesting that the City of Long Beach grant an easement to allow for the upgrade of their facilities at the Alamitos Pumping Plant located at 2000 Walnut Avenue through the installation of a secondary waste line. This project will enable LACSD to prevent potential wastewater overflow and reduce the risk to public health, as required by the Environmental Protection Agency.

The customary investigation was conducted involving public utilities and interested City departments, and there were no objections nor utility conflicts to the proposed sewer line installation and grant of easement. The easement area requested is shown on the attachment.

In conformance with the California Environmental Quality Act, the LACSD adopted a Negative Declaration for this project on February 8, 2012.

This matter was reviewed by Deputy City Attorney Linda Trang on March 12, 2012 and by Budget Management Officer Victoria Bell on March 23, 2012.

## TIMING CONSIDERATIONS

Council action on this matter is not time critical.

## FISCAL IMPACT

A document-processing fee in the amount of \$1,885 was paid by LACSD and deposited in the General Fund (GP) in the Department of Public Works (PW). There is no known job impact associated with the recommended action.

HONORABLE MAYOR AND CITY COUNCIL

April 17, 2012

Page 2

SUGGESTED ACTION:

Approve recommendation.

Respectfully submitted,



MICHAEL P. CONWAY  
DIRECTOR OF PUBLIC WORKS

APPROVED:

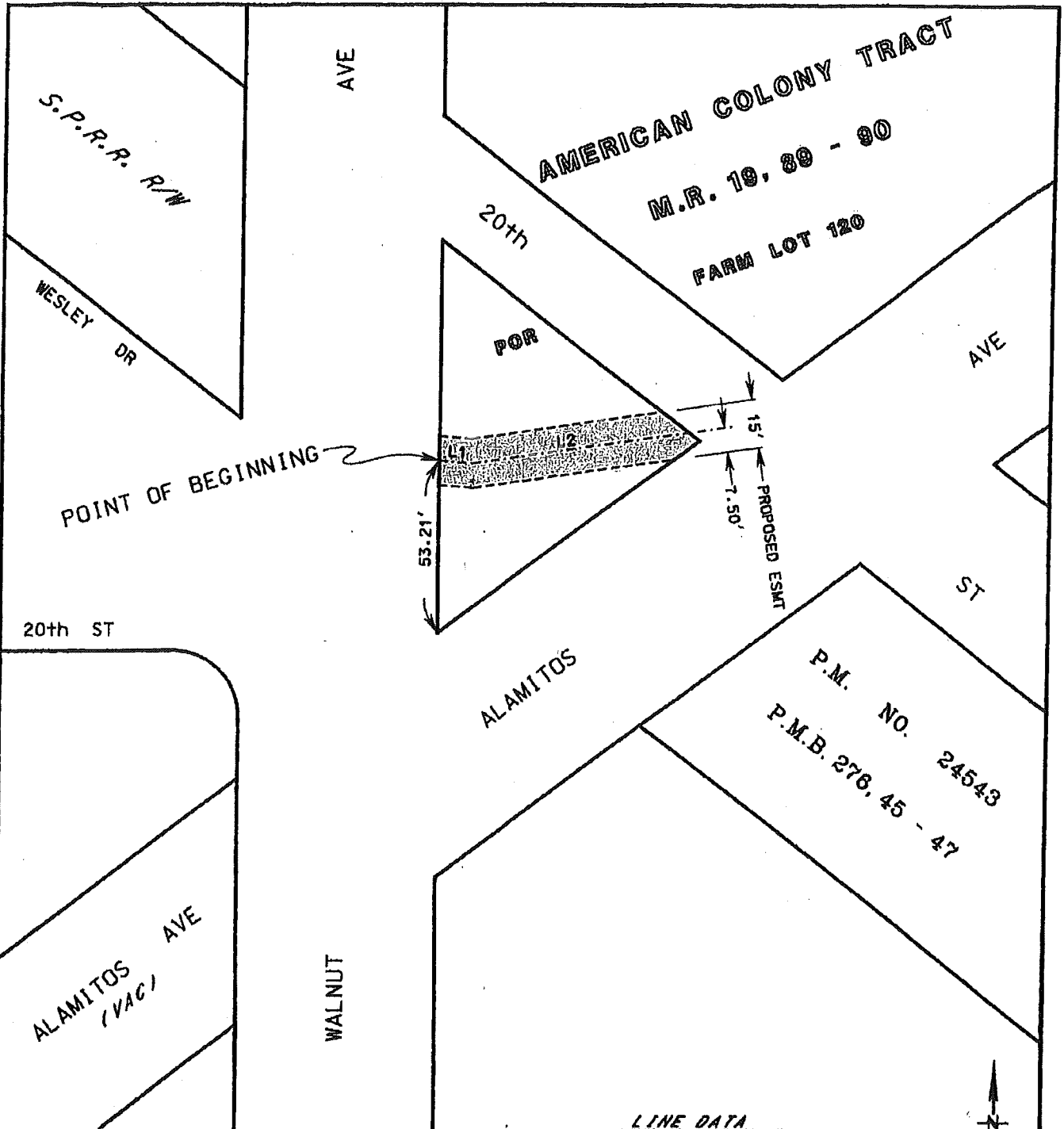


---

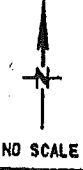
PATRICK H. WEST  
CITY MANAGER

P\CL\ROW Grant Easement to LACSD.doc  
MPC:GMM:SDJ:db

Attachment – Map of Easement Area



LINE DATA  
 L1 S85°37'49"E 10.19'  
 L2 N81°45'57"E 66.98'



PROPOSED EASEMENT.....1,127±SqF

COUNTY SANITATION DISTRICT NO. 29  
 OF LOS ANGELES COUNTY, CALIFORNIA

TRUNK SEWER: ALAMITOS PUMPING PLANT FORCE MAIN NO. 2	
GRANTOR: City of Long Beach	DWG. NO.: 29-p-18
GRANTEE: County Sanitation District No. 29	EASEMENT NO.: 3335
THOMAS GUIDE: 795, F/G 4	ASSESSOR'S PARCEL NO. 7215 009 901