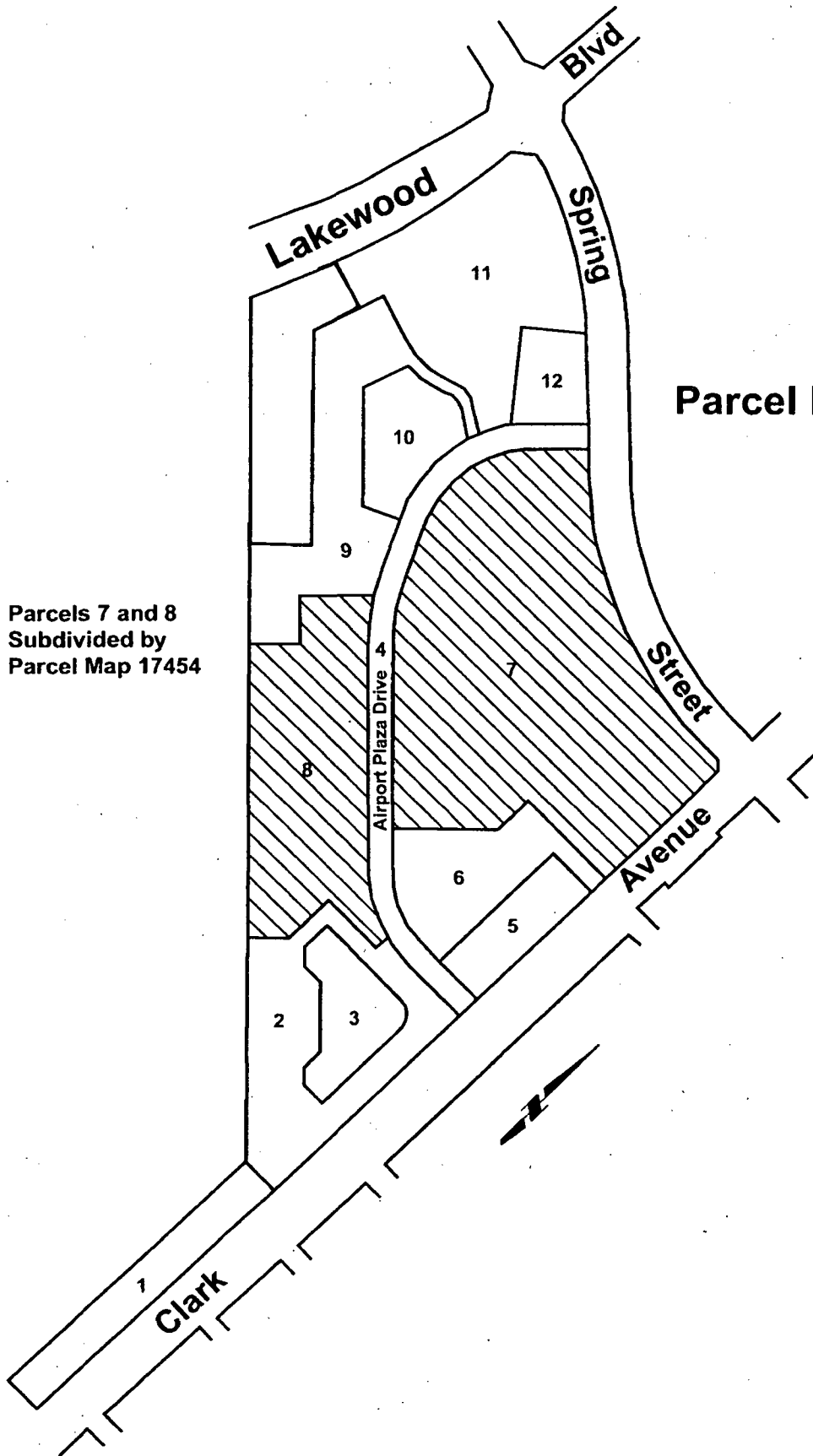


# Exhibit "A"

# R-35

## Parcel Map No. 15307

 Parcels 7 and 8  
Subdivided by  
Parcel Map 17454



# Exhibit "B"

## Parcel Map No. 17454

Showing Sub - Parcels  
1 through 6

 Arden Lease  
Area to be  
Extended

### Sub - Parcel

- 1 Office Building 121,610 sq ft
- 2 Office Building 165,000 sq ft
- 3 Office Building 163,358 sq ft  
parking structure and  
surface parking
- 4 Office Building 75,200 sq ft
- 5 Office Building 75,200 sq ft
- 6 Parking Structure

