

Long Beach Department of Health and Human Services Strategic Plan 2021-2026

Kelly Colopy, Director
City Council Presentation - May 16, 2023



CITY OF
LONG BEACH



The Department

- **Staffing:** More than 550 employees (increase from 320 prior to Pandemic)
- **Budget:** \$180 million
- **Programs:** More than 55



The Department

• Sites:

- Main Health
- MLK Park (Central Facility)
- St. Mary WIC
- North WIC
- Admiral Kidd Park (West Facility)
- Miller Family Education Center
- Multi-Service Center
 - Atlantic Farms Bridge Community (ABC Shelter)
 - Project Homekey Transitional Housing – Best Western
 - Navigation Center/Youth Shelter
 - Luxury Inn and Micro Units
- Houghton Park (Center for Families and Youth)
- Housing Authority
- Worsham Public Health Emergency Management/Local Distribution Site

Funding

Traditional Public Health Programs	Social Determinants of Health	Public Health Crises
<ul style="list-style-type: none">• Community Health• Environmental Health• Chronic Disease Prevention• Communicable Disease Surveillance Prevention and Control• Public Health Emergency Management• Nutrition Services (WIC)• Public Health Nursing• Clinical Services• Data and Planning• Older Adult Services• Healthy Eating/Active Living• Vital Records	Homeless Services Early Childhood Education Youth Development Housing Authority Family Preservation Fatherhood Mental Health Support	Violence Prevention Racial and Health Equity <ul style="list-style-type: none">• Black Infant Health

City Investment: \$7-8 million

Grants & Contracts: \$172 million

Introduction to Strategic Plan

This Strategic Plan focuses on the health and wellness of everyone who lives in Long Beach.

We are committed to ensuring everyone within our diverse communities is safe, healthy, and has the resources to thrive.



Our Approach

Equity Framework

Trauma-and Resiliency-Informed

Health in All Policies and a Population
Perspective

Data Informed

Community Engagement



120 STAFF MEMBERS PARTICIPATED IN PLANNING COMMITTEES FOR ON EACH OF THE 11 PRIORITIES



EIGHT COMMUNITY ENGAGEMENT MEETINGS WITH COMMUNITY GROUPS



RECOMMENDATIONS FROM 79 COMMUNITY-BASED ORGS AND MORE THAN 1,000 PEOPLE WHO PROVIDED INPUT TO CITY PLANS



ALIGNED WITH OTHER HEALTH DEPARTMENT AND CITY PLANS

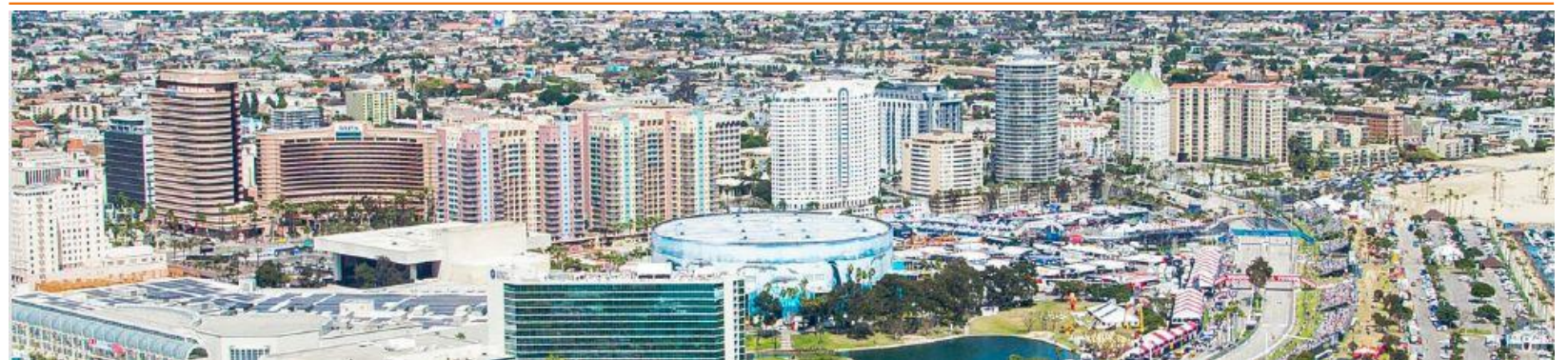


GOALS, OBJECTIVES AND STRATEGIES ARE INFORMED BY CURRENT AREAS OF FOCUS AND INNOVATIONS PLANNED FOR THE NEXT FIVE YEARS

Strategic Vision

Build a strong and resilient internal
infrastructure

Build a healthier, safer, and thriving
Long Beach



Strategic Framework





Equity

Equity is the lens through which we assess, prioritize, and implement all policies and services.

- **Goal 1:** Equity and social justice is integrated into all Health Department programs, policies and services.
- **Goal 2:** The Health Department centers the community voice.
- **Goal 3:** Systems change is informed by making inequities visible.
- **Goal 4:** Equitable practices are operationalized within the Health Department.



Equity

Equity is the lens through which we assess, prioritize, and implement all policies and services.

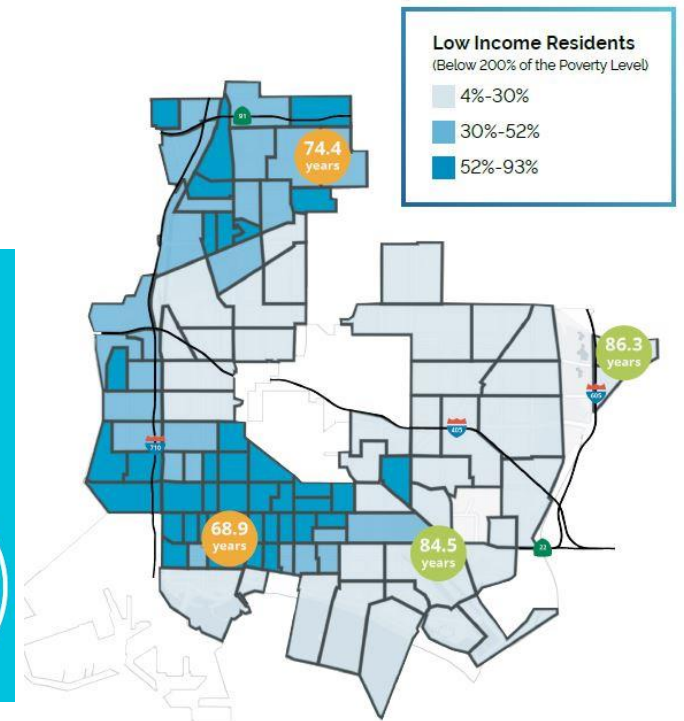
- **Goal 5:** Populations most affected by inequities are healthy and thriving.

- **Specific Strategies for Health & Wellness**

- Black/African American Community
- Latinx Community
- Cambodian Community
- Older Adults
- Veterans

Across Long Beach, babies born just a few miles apart have up to a 17.4 year difference in life expectancy

17.4 YEARS



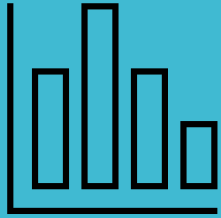


Workforce

The Health Department workforce is competent, valued and supported in promoting and protecting the public's health.

- **Goal 6:** Health Department staff are knowledgeable about core public health competencies, Health Department services and the communities we serve.
- **Goal 7:** Employees are successful in their positions at the Health Department.
- **Goal 8:** The Health Department has a culture of employee appreciation and transparency.



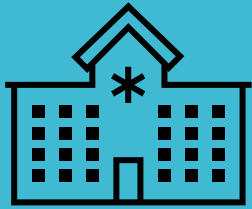


Data

Data are effectively used to plan, monitor, measure, and drive policies and programs toward the Health Department's vision, with an emphasis on equity and social determinants of health.

- **Goal 9:** The Health Department's equity lens is data informed.
- **Goal 10:** The Health Department has a culture of data informed performance and quality improvement.





Services

Services are efficient, responsive and address the diverse needs and strengths of the public, our partners and our colleagues.

- **Goal 11:** Program services are efficient, responsive and address diverse needs.
- **Goal 12:** The Health Department effectively communicates its programs and services within a health equity framework.





Collaboration

The Health Department is a leader for collaboration among private, public and neighborhood level partners to improve the health and well-being of everyone in Long Beach.

- **Goal 13:** The Health Department leads collaborative partnerships to increase collective impact for improving health and well-being.



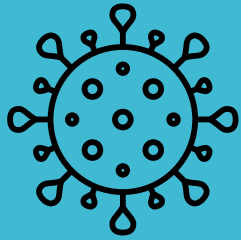


Physical and Mental Health

*All people have quality
physical and mental
health resources in
Long Beach.*

- **Goal 14:** Everyone in Long Beach has access to and utilizes quality preventive and healthcare services.
- **Goal 15:** People have the culturally competent health care and social supports they need to be healthy.
- **Goal 16:** Behavioral health services citywide have the capacity to prevent and reduce mental illness, substance use and trauma.





Communicable Diseases

All people in Long Beach have minimal exposure to communicable diseases and have knowledge and resources to prevent them.

- **Goal 17:** The Health Department prevents the spread of communicable diseases in Long Beach.





Healthy Lifestyles

All people in Long Beach engage in healthy lifestyle behaviors to improve health outcomes.

- **Goal 18:** People engage in healthy behaviors and have access to healthy foods and safe, affordable physical activity opportunities.



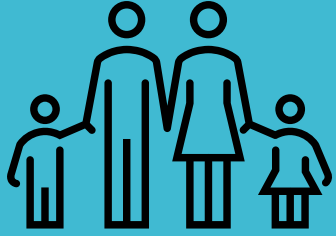


Homelessness

*Everyone in Long Beach
has a safe and affordable
home.*

- **Goal 19:** People in Long Beach precariously housed or experiencing homelessness gain permanent housing.

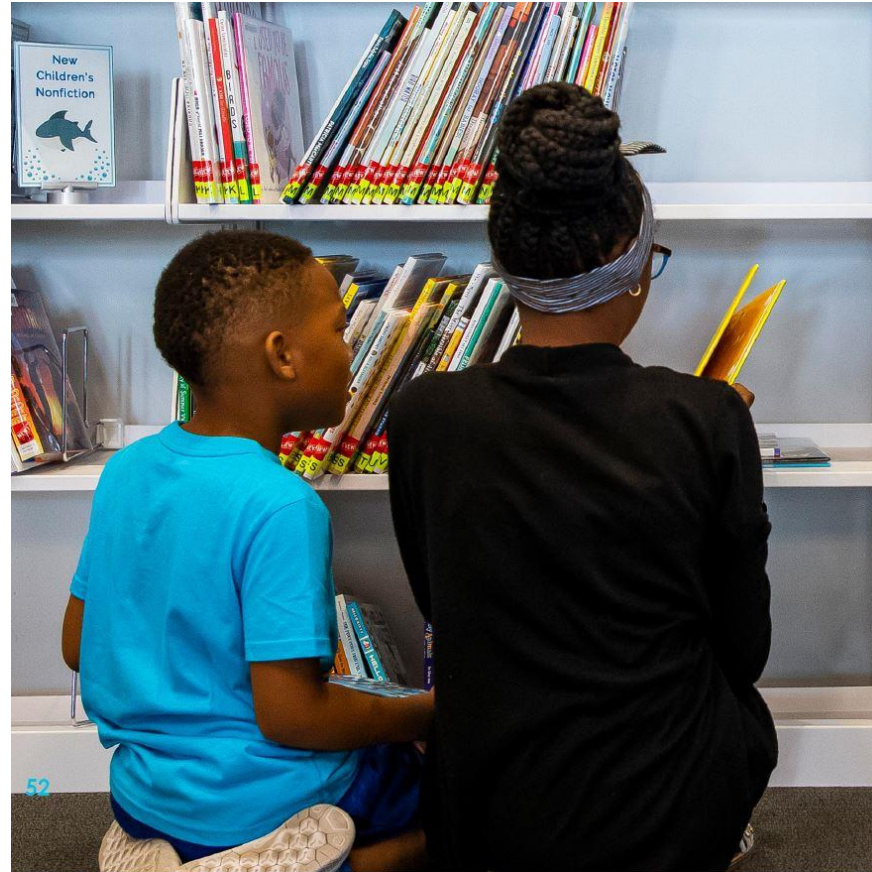




Social and Economic Conditions

Social and economic conditions build and support individual and community health.

- **Goal 20:** Social and economic conditions are improved across the lifespan in Long Beach.





Safety

Everyone in Long Beach will have safe, physical and social environments in their homes, neighborhoods, schools and workplaces.

- **Goal 21:** Preventable deaths and injuries are reduced.
- **Goal 22:** Communities are safe from violence.
- **Goal 23:** People live in safe environments and are prepared for emergencies.



2022-2023 Focus Areas

Continuing to Build Systems for Health

Employee Wellness and Support

Equity Infrastructure and Practices

Performance Management and Improvement

Internal Communication Structures

Thank you

Kelly Colopy, Director

Dr. Jessica Schumer, Deputy Director

