



# CITY OF LONG BEACH

## DEPARTMENT OF PUBLIC WORKS

333 WEST OCEAN BOULEVARD • LONG BEACH, CA 90802 • (562) 570-6383 • FAX (562) 570-6012

March 3, 2015

HONORABLE MAYOR AND CITY COUNCIL  
City of Long Beach  
California

### RECOMMENDATION:

Receive supporting documentation into the record, conclude the public hearing, find that the area to be vacated is not needed for present or prospective public use, and adopt the attached resolution ordering the vacation of a portion of the west side of Martin Luther King, Jr. Avenue, south of 6<sup>th</sup> Street. (District 1)

### DISCUSSION

The current request is for the City of Long Beach to vacate a portion of the west side of Martin Luther King, Jr. Avenue, south of 6<sup>th</sup> Street, as depicted in Exhibit A, to allow for the construction of Alamitos Park. Consistent with California land reversion practices, the vacated portion of Alamitos Avenue will revert back to the original property owners.

On February 3, 2015, the City Council adopted Resolution No. RES-15-0009, declaring its intention to vacate the subject right-of-way, and set March 3, 2015, as the date for the public hearing. A copy of the February 3, 2015, City Council letter is attached as Exhibit B.

This matter was reviewed and approved by Deputy City Attorney Linda Vu on January 22, 2015 and by Budget Management Officer Victoria Bell on February 12, 2015.

### TIMING CONSIDERATIONS

The date of this public hearing was set by City Council action.

### FISCAL IMPACT

There is no fiscal impact associated with this recommendation, and approval will provide continued support to the local economy.

SUGGESTED ACTION:

Approve recommendation.

Respectfully submitted,



ARA MALOYAN, PE  
DIRECTOR OF PUBLIC WORKS

AM:GMM:SDJ:db  
PCLROW MLK Jr Ave Vacation CL.doc

Attachments:

Exhibit A – Site Map

Exhibit B – Council Letter

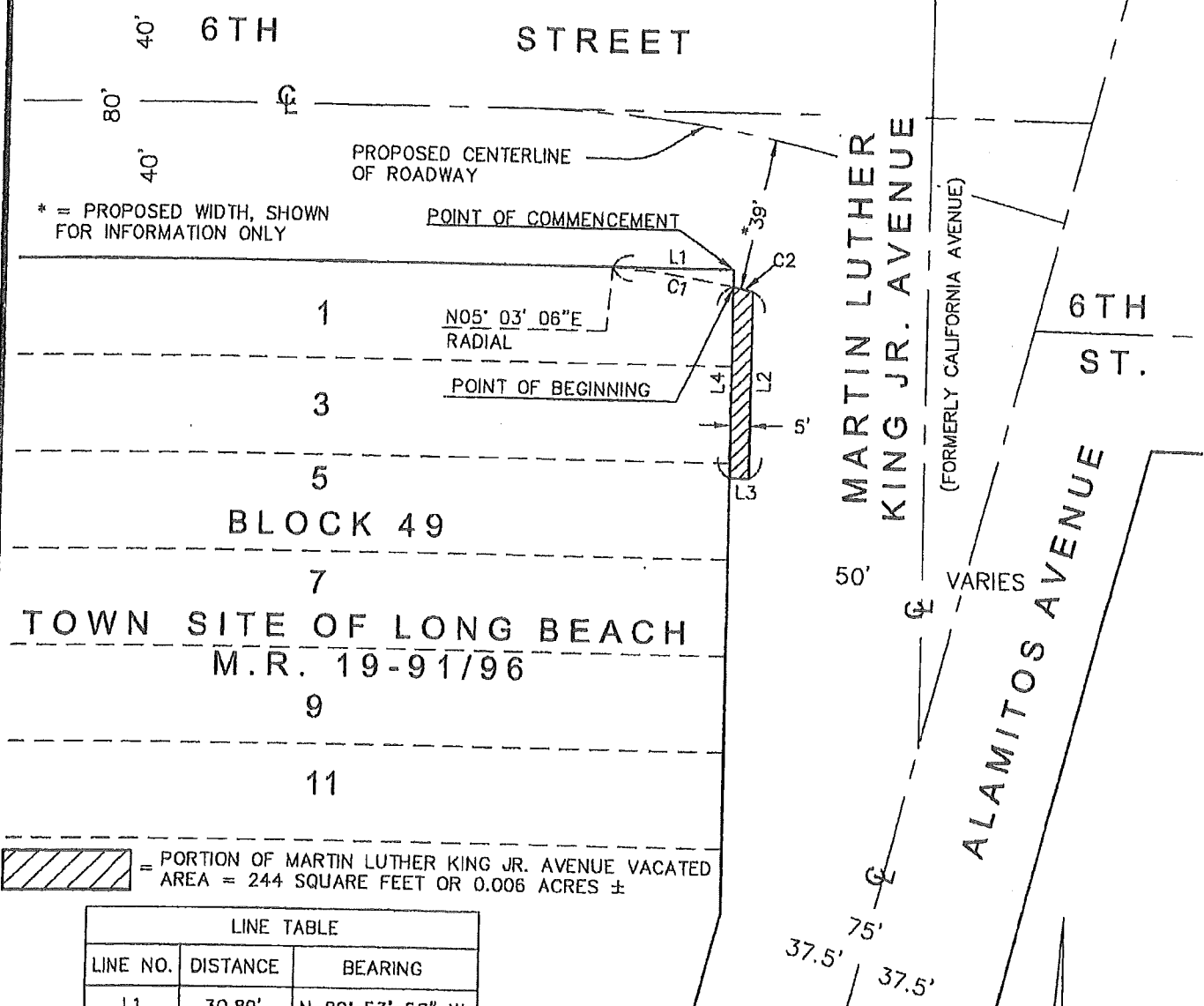
APPROVED:



---

PATRICK H. WEST  
CITY MANAGER

NOTE: THIS EXHIBIT DOES NOT  
CONSTITUTE A LAND SURVEY AND IS  
ONLY INTENDED TO ILLUSTRATE THE  
ATTACHED LEGAL DESCRIPTION

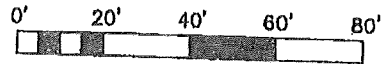


\* = PROPOSED WIDTH, SHOWN  
FOR INFORMATION ONLY

 = PORTION OF MARTIN LUTHER KING JR. AVENUE VACATED  
AREA = 244 SQUARE FEET OR 0.006 ACRES ±

LINE TABLE		
LINE NO.	DISTANCE	BEARING
L1	30.89'	N 89° 53' 58" W
L2	48.25'	S 00° 05' 50" W
L3	5.00'	N 89° 54' 10" W
L4	49.33'	N 00° 05' 50" E

CURVE TABLE			
CURVE NO.	DELTA	RADIUS	LENGTH
C1	06° 40' 40"	268.00'	31.23'
C2	01° 05' 37"	268.00'	5.12'



**CITY OF LONG BEACH**  
DEPT. OF PUBLIC WORKS  
ENGINEERING BUREAU  
SURVEY  
333 W. OCEAN BL. 10TH FL.  
LONG BEACH, CA 90802  
(562) 570-6992

**EXHIBIT "A"**  
**VACATION OF A**  
**PORTION OF MARTIN**  
**LUTHER KING JR.**  
**AVENUE**

**PREPARED FOR:**  
DEPT. OF PUBLIC WORKS  
ENGINEERING BUREAU  
PROJECT MANAGEMENT  
DIVISION

DATE:	12-23-13
JOB #	PWEN 18CIP-
	PW 3070-4910
DRAWN	M.J.F.
SCALE	1" = 40'
SHEET	1 OF 1

# EXHIBIT B

## CITY OF LONG BEACH

~~R-17~~



DEPARTMENT OF PUBLIC WORKS  
333 West Ocean Boulevard 9<sup>th</sup> Floor • Long Beach, CA 90802 • (562) 570-6383 • Fax (562) 670-6012

February 3, 2015

HONORABLE MAYOR AND CITY COUNCIL  
City of Long Beach  
California

### RECOMMENDATION

Request the City Attorney to prepare amendments to Section 10.14.020.A of the Long Beach Municipal Code, relating to one-way streets and alleys, for the conversion of 6<sup>th</sup> Street and 7<sup>th</sup> Street, between Alamitos Avenue, and Atlantic Avenue from one-way streets to two-way streets;

Adopt the attached Resolution closing to vehicular traffic a portion of Martin Luther King Jr. Avenue (MLK Avenue) between 6<sup>th</sup> Street and 7<sup>th</sup> Street;

Authorize the City Manager, or designee, to execute a Right-of-Way Exchange Agreement with the Archdiocese of Los Angeles or its related affiliates, and any and all documents necessary for the vacation of a portion of sidewalk on the west side of MLK Avenue and the dedication of Saint Anthony High School's private property on the south side of 6<sup>th</sup> Street, on the southwest corner of MLK Avenue and 6<sup>th</sup> Street;

Adopt the attached Resolution of Intention to vacate a portion of public right-of-way on the west side of MLK Avenue south of 6<sup>th</sup> Street, set a date for a public hearing on the vacation for March 3, 2015, and authorize the City Manager or his designee to accept an easement deed in order to create parking spaces on the south side of 6<sup>th</sup> Street, west of MLK Avenue;

Adopt Plans and Specifications No. R-6972 for the Alamitos Park Project, Street and Storm Drain Improvements (on 6<sup>th</sup> Street, 7<sup>th</sup> Street, MLK Avenue, Alamitos Avenue, and Atlantic Avenue); award the contract for the Base Bid to Palp, Inc., dba Excel Paving Co., of Long Beach, CA, in the amount of \$1,942,256, and authorize a 15 percent contingency amount of \$291,338, for a total contract amount not to exceed \$2,233,594; and authorize the City Manager or designee to execute all documents necessary to enter into the contract, including any necessary amendments thereto;

Adopt Plans and Specifications No. R-6986 for the Alamitos Park Project, Park Improvements; award the contract to Monet Construction, Inc., of Glendale, CA, in the amount of \$1,552,223, and authorize a 20 percent contingency amount of \$310,445, for a total contract amount not to exceed \$1,862,668; and authorize

HONORABLE MAYOR AND CITY COUNCIL

February 3, 2015

Page 2

the City Manager or designee to execute all documents necessary to enter into the contract, including any necessary amendments thereto;

Authorize the City Manager to execute the third amendment to Agreement No. 32027 with Psomas Corporation, to increase the contract amount by \$200,000, and to execute all necessary documents, for a revised total not-to-exceed amount of \$1,031,400, and execute any other amendments necessary to extend the term within the contract amount;

Adopt and accept Categorical Exemption Nos. CE 45-12 and CE 34-13;

Increase appropriations in the Capital Projects Fund (CP) in the Public Works Department (PW) by \$250,000; and

Increase appropriations in the Gas Tax Street Improvement Fund (SR 181) in the Public Works Department (PW) by \$400,000. (District 1)

DISCUSSION

In 2010, the City identified the intersections of MLK Avenue and Alamitos Avenues with 6<sup>th</sup> Street and 7<sup>th</sup> Street as safety hazards through a citywide analysis of intersections with high collision rates. MLK Avenue and Alamitos Avenue intersect the one-way couplets of 6<sup>th</sup> Street and 7<sup>th</sup> Street, creating complicated intersections, which have resulted in numerous collisions. The most common collision type was broadside, followed by sideswipe, with the most common injury involving bicyclists and pedestrians.

To reduce collisions in the area, the City applied for and was awarded a \$900,000 federal grant from Caltrans through their Highway Safety Improvement Program to improve the geometry of the intersections. The proposed street improvements would significantly improve the safety of drivers, bicyclists, and pedestrians by terminating MLK Avenue at 7<sup>th</sup> Street, and by converting portions of 6<sup>th</sup> Street and 7<sup>th</sup> Street from one-way to two-way streets.

In addition to the traffic safety concerns identified above, the City has identified the project area as deficient in park space. There was no parkland within a one-half mile radius of the project site. In 2011, the City applied for the Statewide Park Development and Community Revitalization Program and was awarded \$2.83 million to develop a park in this park-deficient neighborhood. Staff is requesting approval for a 36,590 square foot neighborhood park, which would be developed within the existing MLK Avenue right-of-way. In order to implement the proposed park, MLK Avenue, between 7<sup>th</sup> Street and 6<sup>th</sup> Street, will remain as public right-of-way, but the street will be closed to vehicular traffic and be used as park space. The proposed park will include a performance area, children's play areas, skate area, plaza, stormwater retention and filtration feature, public art, and gathering spaces. It will also serve approximately 32,000 residents who live within one-half mile radius of the park.

The proposed new street geometry and park development projects will include a range of roadway and traffic circulation improvements (Exhibit A). These improvements will affect 6<sup>th</sup> Street, 7<sup>th</sup> Street, MLK Avenue, Atlantic Avenue, Alamitos Avenue, and E. Cobre Way. The proposed improvements include roadway, parkway, drainage, utility relocation, new and modified traffic signals, removal and replacement of signage, new striping, removal and replacement of trees, and removal and relocation of parking spaces. Due to the proposed new street geometry that necessitates street closure and traffic conversions, the proposed street improvements must be completed prior to commencement of the proposed park development.

The proposed park development and street improvements were presented to the community on May 20, 2013. The meeting was held by Council District 1 at the Pacific Island Ethnic Art Museum and was attended by Council District 1 representatives, City staff, the design consultants, and members of the community.

#### Conversion of 6<sup>th</sup> Street and 7<sup>th</sup> Street from one-way to two-way streets

The conversion of 6<sup>th</sup> and 7<sup>th</sup> Streets, between Alamitos Avenue and Atlantic Avenue, will reconfigure the streets' current one-way operation to allow for two-way traffic east of Atlantic Avenue. Improvements on 6<sup>th</sup> Street include signing and striping improvements, and will allow for on-street diagonal parking. A new intersection at Alamitos Avenue will realign 6<sup>th</sup> Street such that the new configuration will provide connectivity to 6<sup>th</sup> Street, east of Alamitos Avenue (Exhibit B).

7<sup>th</sup> Street will be reconfigured from its current one-way (westbound) three-lane operation to allow for two-way traffic (two lanes in each direction), east of Atlantic Avenue. In addition to ancillary signage and striping improvements to accommodate the reconfiguration, new catch basins will be installed to alleviate some of the flooding that occurs at several intersections between Atlantic Avenue and Alamitos Avenue.

The conversion of 7<sup>th</sup> Street to a two-way street will allow Long Beach Transit buses to travel eastbound on 7<sup>th</sup> Street just east of Atlantic Avenue. The proposed new route will require the widening of Atlantic Avenue at 7<sup>th</sup> Street to allow ample bus turning radius. The two-way traffic conversion will also require the elimination of parking spaces on 7<sup>th</sup> Street, within the project area, and relocation of some of the eliminated spaces on MLK Avenue, between 7<sup>th</sup> Street and 10<sup>th</sup> Street. Unfortunately, there is not enough street parking spaces available to restore all displaced parking spaces. Hence, the proposed street improvements and park development will result in the elimination of 53 on-street parking spaces, as follows:

**Number of Parking Spaces Before and After Project Completion**

<b>Location</b>	<b>Current</b>	<b>Proposed</b>
7 <sup>th</sup> Street between Atlantic Avenue and Alamitos Avenue	62	0
6 <sup>th</sup> Street between Atlantic Avenue and Alamitos Avenue	66	80
MLK Avenue Street between 7 <sup>th</sup> Street and 10 <sup>th</sup> Street	63	86
MLK Avenue between 6 <sup>th</sup> Street and 7 <sup>th</sup> Street	23	0
Atlantic Avenue between 6 <sup>th</sup> Street and La Reina Way	28	23
<b>Total</b>	<b>242</b>	<b>189</b>

The proposed street improvements and conversion of 6<sup>th</sup> Street and 7<sup>th</sup> Street were reviewed and approved by the City Traffic Engineer. Additionally, per the requirements of the federal grant, a Preliminary Environmental Study (PES) was prepared to analyze potential impacts to air quality, noise, traffic and historic structures. Caltrans staff reviewed the PES and concluded the proposed project would not cause any adverse environmental impacts to the categories mentioned above.

Elimination of vehicular traffic on MLK Avenue between 6<sup>th</sup> Street and 7<sup>th</sup> Street.

The existing MLK Avenue roadway pavement section is proposed to be removed from curb to curb (Exhibit C). The elimination of vehicular access on MLK Avenue, between 6<sup>th</sup> and 7<sup>th</sup> Streets, for the proposed park will eliminate the main access route to the California National Guard Armory's (the Armory) parking lot located in the rear of the property. As a result, the Armory requested access through the proposed park during their yearly exercises, as well as related onsite improvements that mitigate impacts of the proposed park and street closure on their facility. Requested onsite improvements consist of the relocation of a trash bin enclosure at the opposite end of the parking lot to accommodate weekly trash pick-up, and the installation of a gate keypad at the current location of the trash bin enclosure.

Pursuant to provisions of the California Vehicle Code, local authorities may adopt rules and regulations closing any street or alley in its jurisdiction to vehicular traffic when, in the opinion of the legislative body having jurisdiction, the street or alley is no longer needed for vehicular traffic. The City of Long Beach adopted such rules and regulations in 1997 with Resolution No. C-26191, which define public park and/or recreational use as a valid justification for street closure to vehicular use. Findings must establish that the subject portion of right-of-way is unnecessary for vehicular use. Staff supports this action based on the following evidence, facts, conditions and findings establishing that the street to be closed is not needed for vehicular traffic:

- A. Although there will be a fifteen-foot wide paved driveway that runs through the park from Alamitos Avenue to E. Cobre Way, vehicular access will be closed by removable bollards at both ends. California National Guard Armory employees will access their parking lot via the alleys west of and south of their facility. The driveway is to be used exclusively by the Armory and only during their yearly exercises.

- B. Other than the previously mentioned exception, the park portion of MLK Avenue is to be closed to vehicular traffic, but will remain open for pedestrian use.
- C. The proposed park shall not be dedicated or designated as a public park or recreation area for purposes of Long Beach City Charter Section 905, entitled Parks in Perpetuity. Therefore, the recommended action would not subject the proposed park to the 2:1 replacement ratio required under Section 905. If it is determined, due to future land development or for any other reason, that the subject street would better serve the public as a vehicular thoroughfare, vehicular use can be restored and the proposed park area would not need to be replaced by other park or recreation areas.
- D. The improvements to the proposed park area will be overseen by the Public Works Department and, ultimately, maintained by the Parks, Recreation, and Marine Department (PRM). Notwithstanding the non-dedication and non-designation of the subject area as a public park within the meaning of Section 905, the proposed park shall be controlled and operated by the City; hence, the Parks and Recreation Commission shall have authority over the park in accordance with Chapter 2.54 of the Long Beach Municipal Code.

Land Exchange between the City of Long Beach and Saint Anthony High School

The proposed project will require a land exchange between the City of Long Beach and Saint Anthony High School. The proposed land exchange will involve the City vacating a portion of sidewalk (229.5 square feet) on the west side of MLK Avenue, and Saint Anthony dedicating a portion of private land (69.5 square feet) on the south side of 6<sup>th</sup> Street, on the southwest corner of 6<sup>th</sup> Street and MLK Avenue. The land exchange with Saint Anthony High School is necessary for the realignment of 6<sup>th</sup> Street on Alamitos Avenue. The land exchange will require relocation of an existing fence and gate, removal and replacement of landscaping and irrigation, restriping, and required pavement and drainage repairs to the affected parking lot area. Staff has been working closely with representatives of the Los Angeles Archdiocese who are supportive of the land exchange.

Consistent with California land reversion practices, the vacated portion of MLK Avenue will revert back to the original property owners. Proceedings for this vacation are being conducted in accordance with Chapter 3, General Vacation Procedure, of the Public Streets, Highways and Service Easements Vacation Law of the California Streets and Highways Code. Findings must establish that the subject right-of-way is unnecessary for present or prospective public use. The Department of Public Works supports this action based on the associated evidence, facts, conditions and findings, establishing the dedicated right-of-way to be vacated is unnecessary for present or prospective public use. The proposed vacation action is consistent with the General Plan as required in Section 8313 of the Public Streets, Highways and Service Easements Vacation Law. The General Plan conformity determination is scheduled for the Planning Commission's February 5, 2015 meeting.



HONORABLE MAYOR AND CITY COUNCIL

February 3, 2015

Page 6

Additionally, it is the goal of the Department of Public Works to widen streets and sidewalks to the standards established in the City's General Plan. When significant new development is proposed, the public rights-of-way adjacent to the site are reviewed for sufficiency to accommodate the new development. For the construction of the proposed park and realignment of 6<sup>th</sup> Street, the dedication of additional right-of-way width is recommended to maintain existing sidewalk width.

The interested City Departments, including Fire and Police, have reviewed the proposed right-of-way vacation and have no objections to this action. The conditions of approval satisfying the concerns of the public utility companies are attached. The Los Angeles Archdiocese has agreed to the development conditions that include the above-described dedication.

The public hearing on this matter to be held on March 3, 2015, will allow all persons interested in, or objecting to, the proposed vacation to appear and be heard.

Construction Contracts

City Council approval is requested to enter into contracts for the construction of street, storm drain, and park improvements at Alamitos Park.

The bids for both projects were advertised in the Press-Telegram on September 10, 2014. The bid documents were made available from the Purchasing Division, located on the seventh floor of City Hall, and the Division's website at [www.longbeach.gov/purchasing](http://www.longbeach.gov/purchasing). Bid announcements were also included in the Purchasing Division's weekly update of Open Bid Opportunities, which is sent to 30 local, minority and women-owned business groups.

For R-6972, 3,168 potential bidders specializing in civil engineering, construction, and construction materials and supplies were notified of the bid opportunity. Of those bidders, 102 downloaded the bid via our electronic bid system. Five bids were received on November 4, 2014. Of those five bidders, one was a Minority-owned Business Enterprise (MBE), none were Women-owned Business Enterprises (WBEs), two were certified Small Business Enterprises (SBEs), and one was a Long Beach businesses (Local). Palp, Inc., dba Excel Paving Co., of Long Beach, CA (not a DBE/MBE/SBE/WBE), was determined to be the lowest responsible bidder.

For R-6986, 3,449 potential bidders specializing in landscaping and gardening products and services, civil engineering, construction, and construction materials and supplies were notified of the bid opportunity. Of those bidders, 152 downloaded or purchased the bid via our electronic bid system. Ten bids were received on October 29, 2014. Of those ten bidders, two were Minority-owned Business Enterprises (MBEs), one was a Women-owned Business Enterprise (WBE), seven were certified Small Business Enterprises (SBEs), and none were Long Beach businesses (Local). Monet

HONORABLE MAYOR AND CITY COUNCIL

February 3, 2015

Page 7

Construction, of Glendale, CA (not a DBE/MBE/WBE/SBE/Local), was determined to be the lowest responsible bidder.

### **Local Business Outreach**

In an effort to align with our outreach goal, Long Beach businesses are encouraged to submit bids for City contracts. The Purchasing Division also assists businesses with registering on the Bids Online database to download bid specifications. Through outreach, 290 Long Beach vendors were notified to submit bids for R-6972, of which three downloaded and one submitted a bid. For R-6986, 317 Long Beach vendors were notified to submit bids, of which nine downloaded and none submitted a bid. The Purchasing Division is committed to continuing to perform outreach to local vendors to expand the bidder pool.

This matter was reviewed by Deputy City Attorney Linda Vu on January 22, 2015 and by Budget Management Officer Victoria Bell on January 17, 2015.

### Consulting Contract

Psomas is one of seven consultants selected under RFP No. PW10-067, with an aggregate contract authority of \$8 million, for certified material testing, inspection and construction management services. There is insufficient authority remaining among the aggregated amounts of these seven contracts to cover the services required; therefore, an increase of \$200,000 in contract authority is requested to cover the construction management services required on this project.

### ENVIRONMENTAL

In conformance with the California Environmental Quality Act, Categorical Exemption Nos. CE 45-12 and CE 34-13 were issued for this project and subsequently received National Environmental Policy Act clearance from the California Transportation Department in June 2014.

### SUSTAINABILITY

The proposed park project incorporates sustainability design features that include reuse of recycled pavement, a natural stormwater retention and filtration feature, and a new green space with large canopied trees in an area that is built out. The proposed green space, along with additional street trees, will also help reduce heat island effect and improve overall connectivity between existing land uses. The street design will also incorporate additional landscaping, better drainage, new bus stops, and new sidewalks that meet the current disabled access regulations. More importantly, the proposed projects meet the goals of the recently adopted Mobility Element by maintaining and enhancing safety, while strengthening community, sense of place, and the natural environment.

### TIMING CONSIDERATION

City Council action to adopt the Plans and Specifications Nos. R-6972 and R-6986 and award contracts concurrently is requested on February 3, 2015 to move forward with the implementation of these projects.

### FISCAL IMPACT

The total contract amount for improvements to the proposed park area is not to exceed \$1,862,668, including a 20 percent contingency of \$310,445. The estimated total project cost is \$2,401,068 and includes consulting services, design, construction and project support. The total project cost is supported by Proposition 84 grant funding for statewide park development and is currently appropriated in the Capital Projects Fund (CP) in the Public Works Department (PW). The grant does not have a cash or in-kind match requirement. Following completion, staff estimates an annual General Fund cost of \$25,000 for operating and maintenance costs for youth programs, landscaping, utilities and supplies. Operations and maintenance costs are currently not funded and will be addressed as part of a future budget process.

The total contract amount for Alamitos Park street and storm drain improvements is not to exceed \$2,233,594, including a 15 percent contingency of \$291,338. The total project cost for street improvements is estimated at \$3,004,030 and includes consulting services, design, construction and project support. Of the total project cost, \$2,354,030 is appropriated in the Public Works Department and funded with \$521,442 in Transportation Improvement Fees, \$85,000 in Gas Tax Street Improvement, \$350,000 in Proposition A, \$497,589 in Proposition C, as well as \$900,000 in Federal Map-21 grant funds for improvement and maintenance of transportation infrastructure. Proposition A and C funding is intended for the construction, maintenance and improvement of mass transit services and facilities. An appropriation increase of \$400,000 is requested in the Gas Tax Street Improvement Fund (SR 181) and \$250,000 in the Capital Projects Fund (CP) in the Public Works Department (PW) for the remaining balance. The appropriation increase of \$250,000 is offset by revenue from the Successor Agency Fund (SA 270) in the Development Services Department (DV).

The number of additional full-time equivalent (FTE) local jobs created by this project will not be known until the contractors complete their hiring and construction has commenced.

SUGGESTED ACTION:

Approve recommendation.

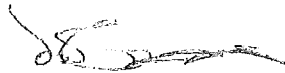
Respectfully submitted,



ARA MALOYAN, PE  
DIRECTOR OF PUBLIC WORKS



GEORGE CHAPJIAN  
DIRECTOR OF PARKS, RECREATION &  
MARINE



JOHN GROSS  
DIRECTOR OF FINANCIAL MANAGEMENT

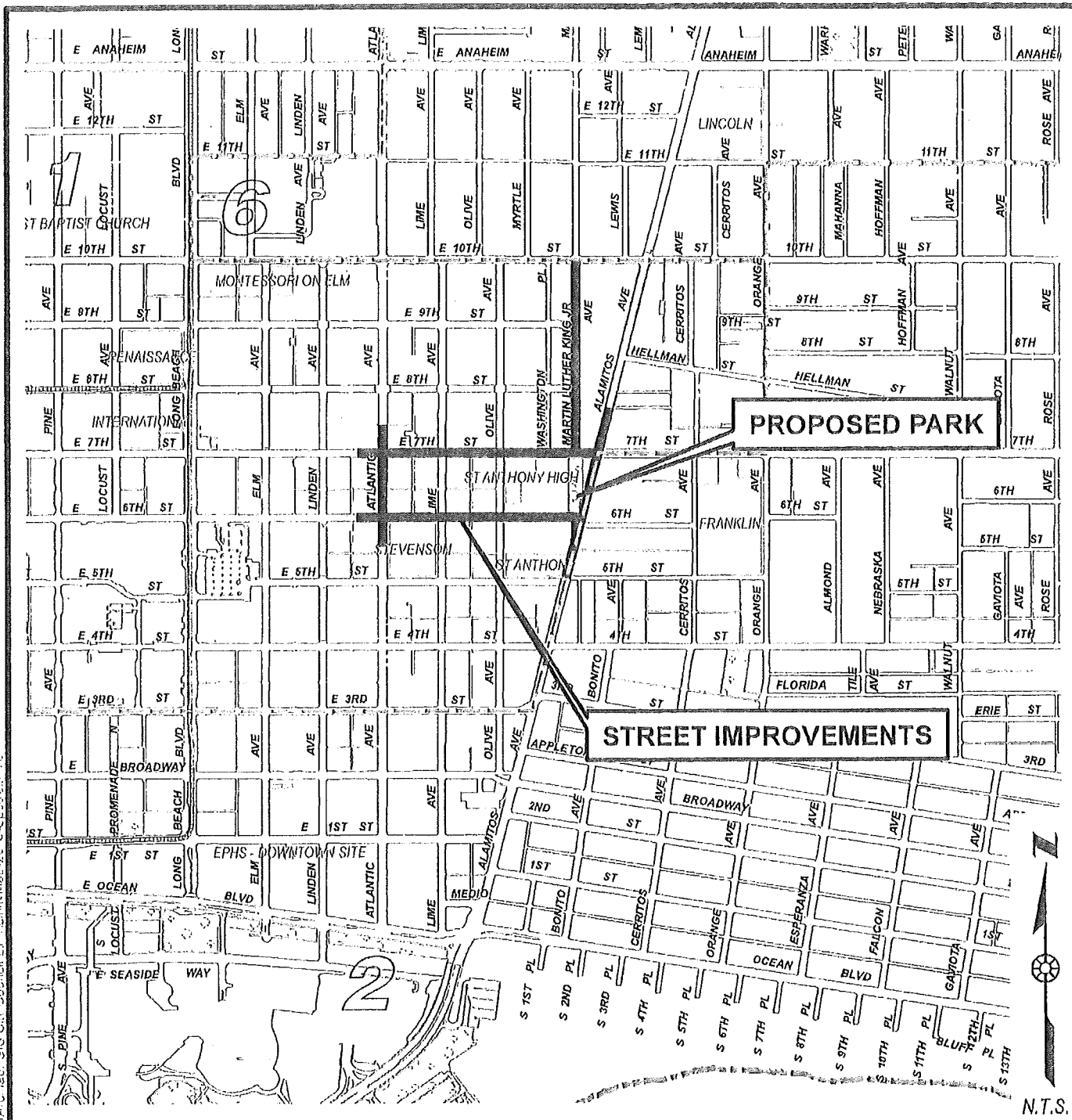
AM/GC/JG/bs  
PCLIR-6972 R6986 Alamitos Park -Park Street Storm Drain CL.doc

Attachments:  
Exhibit A – Vicinity Map  
Exhibit B – Street Improvement Map  
Exhibit C - Proposed Park Site Plan  
2 Resolutions

APPROVED:



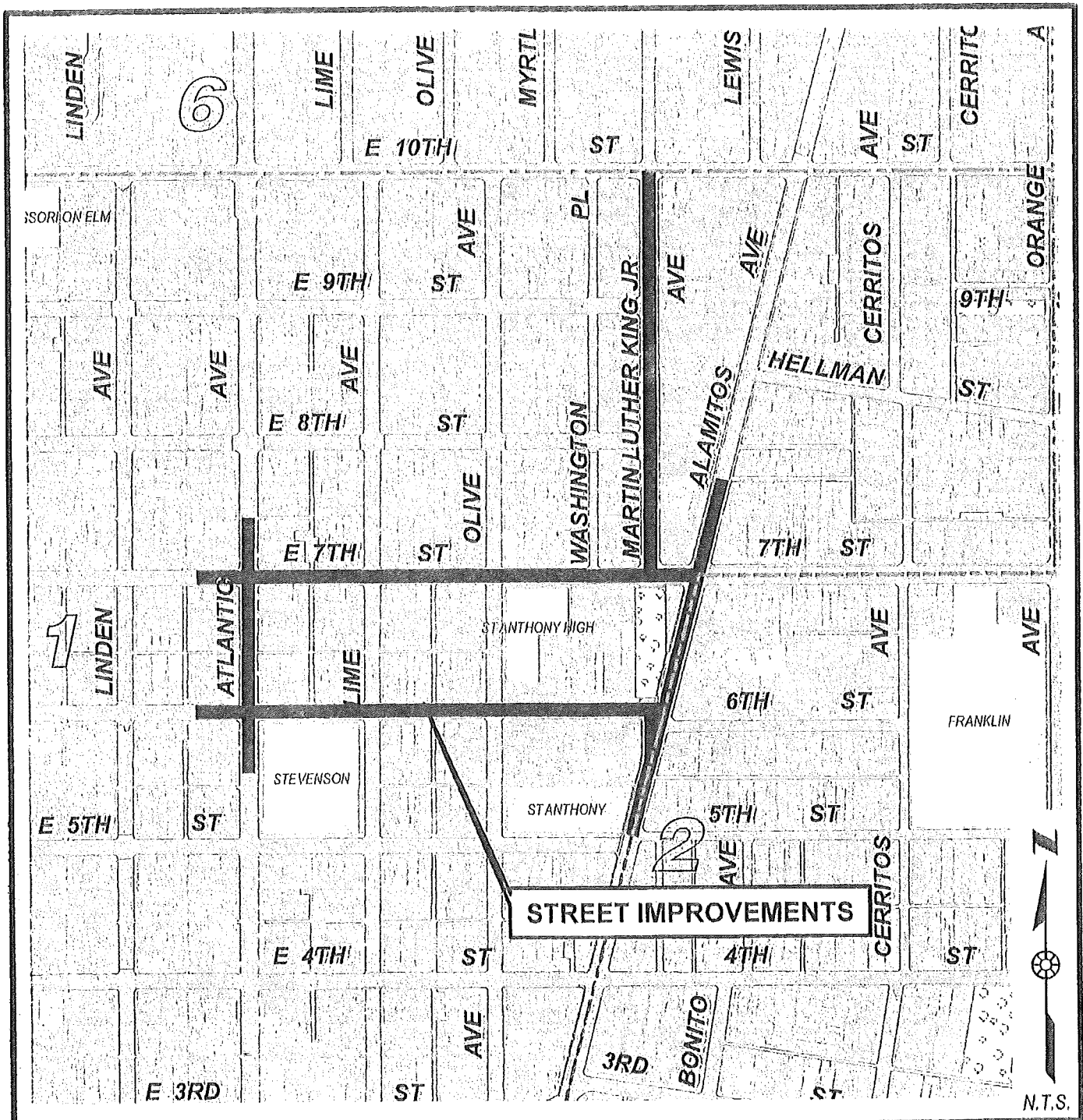
PATRICK H. WEST  
CITY MANAGER



**CITY OF LONG BEACH - CALIFORNIA**  
**DEPARTMENT OF PUBLIC WORKS, ENGINEERING BUREAU**

**VICINITY MAP FOR**  
**PROPOSED PARK & STREET IMPROVEMENTS**  
**6TH & 7TH STREET BETWEEN ATLANTIC AVENUE & ALAMITOS AVENUE**  
**ATLANTIC AVENUE BETWEEN 6TH STREET & LA REINA WAY**  
**MARTIN LUTHER KING BLVD. BETWEEN 6TH STREET & 10TH STREET**  
**ALAMITOS AVENUE BETWEEN 5TH STREET & 7TH STREET**

FN: GIS City Council Lt VicinityMap-2016-Special



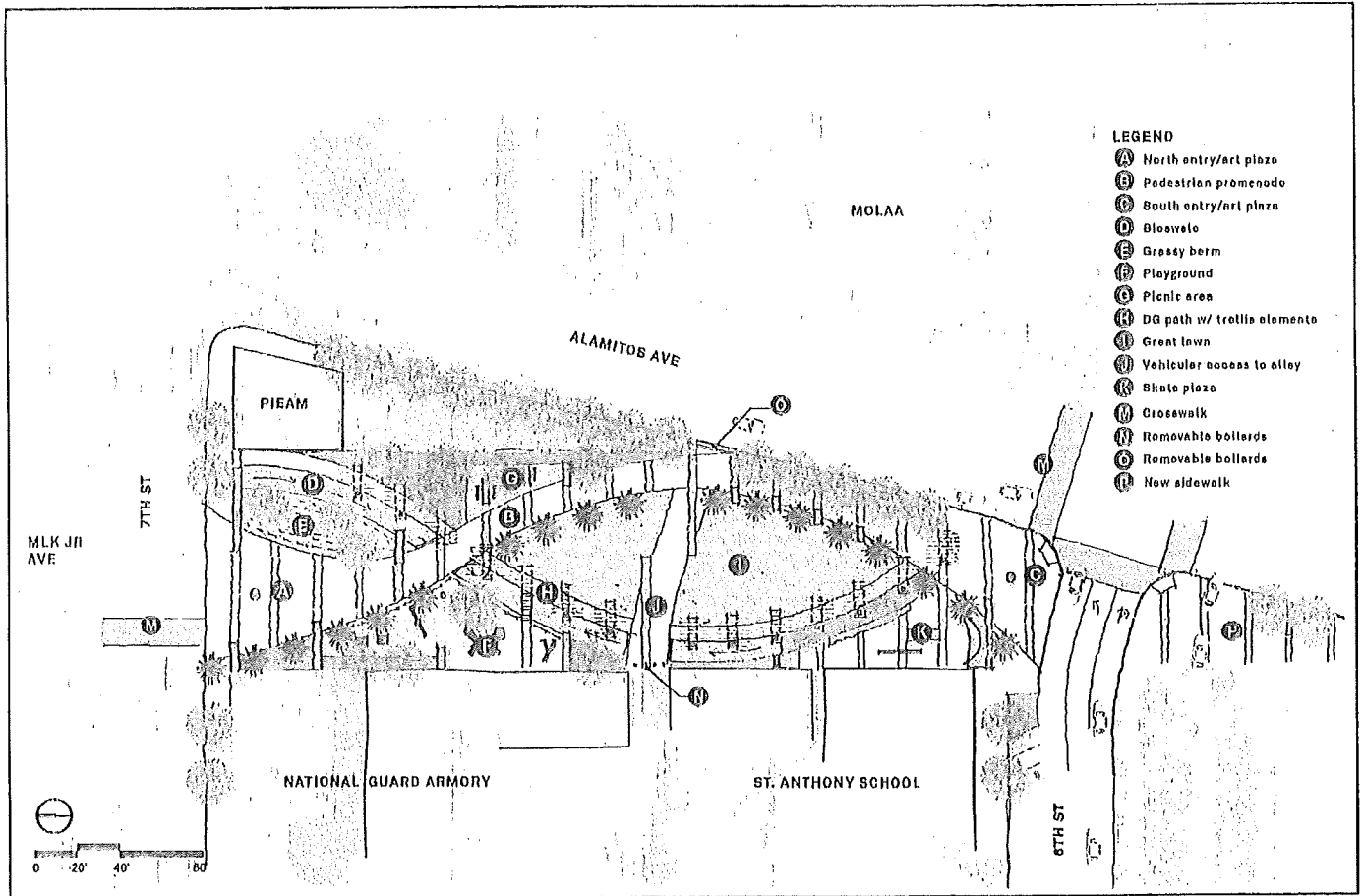
CITY OF LONG BEACH - CALIFORNIA  
 DEPARTMENT OF PUBLIC WORKS, ENGINEERING BUREAU

## PROPOSED STREET IMPROVEMENTS

- 6TH & 7TH STREET BETWEEN ATLANTIC AVENUE & ALAMITOS AVENUE
- ATLANTIC AVENUE BETWEEN 6TH STREET & LA REINA WAY
- MARTIN LUTHER KING BLVD. BETWEEN 7TH STREET & 10TH STREET
- ALAMITOS AVENUE BETWEEN 5TH STREET & 7TH STREET

FR GIS City Council Meeting Mar 2015 Special

Exhibit B



- LEGEND**
- A North entry/art plaza
  - B Pedestrian promenade
  - C South entry/art plaza
  - D Bicycle
  - E Grassy berm
  - F Playground
  - G Picnic area
  - H DG path w/ trolley elements
  - I Great lawn
  - J Vehicular access to alley
  - K Skate plaza
  - L Crosswalk
  - M Removable bollards
  - N Removable bollards
  - O New sidewalk

AECOM

Exhibit C

PROPOSED PARK SITE PLAN

OFFICE OF THE CITY ATTORNEY  
CHARLES PARKIN, City Attorney  
333 West Ocean Boulevard, 11th Floor  
Long Beach, CA 90802-4664

1  
2  
3  
4  
5  
6  
7  
8  
9  
10  
11  
12  
13  
14  
15  
16  
17  
18  
19  
20  
21  
22  
23  
24  
25  
26  
27  
28

RESOLUTION NO.

A RESOLUTION OF THE CITY COUNCIL OF THE CITY OF LONG BEACH CLOSING TO VEHICULAR TRAFFIC A PORTION OF THE STREET KNOWN AS MARTIN LUTHER KING, JR. AVENUE, BETWEEN 6<sup>TH</sup> STREET AND 7<sup>TH</sup> STREET IN THE CITY OF LONG BEACH, COUNTY OF LOS ANGELES, STATE OF CALIFORNIA

WHEREAS, California Vehicle Code Section 21101(a)(1) authorizes local authorities to adopt rules and regulations by ordinance or resolution providing for the closing of any street or alley in its jurisdiction to vehicular traffic when, in the opinion of the legislative body having jurisdiction, the street or alley is no longer needed for vehicular traffic; and

WHEREAS, the City of Long Beach adopted such rules and regulations on June 17, 1997 with Resolution No. C-26191, providing that public park and/or recreational purposes are a valid justification for closure to vehicular use; and

WHEREAS, the City of Long Beach (the "City") has identified the intersection of 7<sup>th</sup> Street and Martin Luther King, Jr. Avenue as second in terms of most collisions between January 1, 2005 and September 1, 2010; and

WHEREAS, to enhance the safety of drivers, bicyclists, and pedestrians by simplifying the complicated intersection geometry, the City is interested in closing to vehicular traffic a portion of the public street known as Martin Luther King, Jr. Avenue located between 6<sup>th</sup> Street and 7<sup>th</sup> Street and constructing a park (Alamitos Park Project) in this area, as shown on Exhibit "A" attached to this resolution and described more particularly as follows:

Those portions of Martin Luther King Jr. Avenue (formerly California



1 Avenue), 100 feet wide and of varying width, Sixth Street, 80 feet wide, and  
2 Seventh Street, 80 feet wide, as shown on Town Site of Long Beach, in the  
3 City of Long Beach, County of Los Angeles, State of California, as shown on  
4 a map recorded in Book 19, pages 91 to 96 of Miscellaneous Records, in  
5 the office of the County Recorder of said county, and a portion of Alamitos  
6 Avenue, 75.00 feet wide, as shown on The Resubdivision of Portions of the  
7 Alamitos Tract and Alamitos Beach Townsite, in said city, as shown on a  
8 map recorded in Book 43, pages 9 to 10 of Miscellaneous Records, in the  
9 office of the County Recorder of said county, described as follows:

10 1. Beginning at the northeasterly corner of Lot 1, Block 48 of said  
11 Town Site of Long Beach, thence, along the northerly prolongation of the  
12 easterly boundary of said block 48, North 00°05'50" East 15.00 feet to the  
13 intersection with a line parallel with and 25.00 southerly from the centerline  
14 of said Seventh Street, 80 feet wide;

15 2. Thence, along said line, South 89°54' 10" East 4.14 feet;

16 3. Thence South 84°11'32" East 20.10 feet to the intersection  
17 with a line parallel with and 27.00 feet southerly from the centerline of said  
18 Seventh Street;

19 4. Thence, along said line, South 89°54' 10" East 75.86 feet to  
20 the intersection with the northerly prolongation of the westerly boundary of  
21 Villa Lot 23 of said Town Site of Long Beach;

22 5. Thence, along said prolongation and boundary, South  
23 00°05'50" West 229.73 feet to the southerly corner of last said lot;

24 6. Thence, at right angle from the easterly boundary of last said  
25 lot, South 75°35'43" East 7.50 feet to a line parallel with and 30.00 westerly  
26 from the centerline of said Alamitos Avenue, 75.00 feet wide;

27 7. Thence, along said line, South 14°27'59" West 170.58 feet to  
28 the beginning of a tangent curve concave northwesterly, having a radius of

OFFICE OF THE CITY ATTORNEY  
CHARLES PARKIN, City Attorney  
333 West Ocean Boulevard, 11th Floor  
Long Beach, CA 90802-4664

1 30.00 feet;

2 8. Thence, southerly and westerly along said curve through a  
3 central angle of 90°00'00" an arc length of 47.12 feet to a tangent line;

4 9. Thence, along said line, North 75°32'01" West 4.94 feet to the  
5 beginning of a tangent curve concave southerly having a radius of 313.00  
6 feet;

7 10. Thence, westerly along said curve through a central angle of  
8 04°25'40" an arc length of 24.19 feet to the intersection with the southerly  
9 prolongation of the easterly boundary of said block 48;

10 11. Thence, along said prolongation and boundary, North  
11 00°05'50" East 399.12 feet to the Point of Beginning.

12 Contains 0.886 acres or 38,591 square feet, more or less.

13 WHEREAS, the City Council of the City of Long Beach does hereby make  
14 those findings of facts set forth in Exhibit "B" attached to this resolution that such portion  
15 of the public street is no longer needed for vehicular traffic;

16 NOW, THEREFORE, the City Council of the City of Long Beach resolves as  
17 follows:

18 Section 1. Pursuant to Vehicle Code Section 21101(a)(1), the City  
19 Council of the City of Long Beach makes those findings set forth in Exhibit "B" that a  
20 portion of the public street known as Martin Luther King, Jr. Avenue between 6<sup>th</sup> Street  
21 and 7<sup>th</sup> Street as shown on Exhibit "A" is no longer needed for vehicular traffic.

22 Section 2. Pursuant to the authority granted by Vehicle Code Section  
23 21101(a)(1), such portion of the public street shall be closed to vehicular traffic.

24 Section 3. All design, engineering and construction costs associated with  
25 the implementation of this resolution shall be funded by grants from the California  
26 Resource Agency and the Federal Highway Safety Improvement Program.

27 Section 4. This resolution shall take effect immediately upon its adoption  
28 by the City Council, and the City Clerk shall certify to the vote adopting this resolution.

OFFICE OF THE CITY ATTORNEY  
CHARLES PARKIN, City Attorney  
333 West Ocean Boulevard, 11th Floor  
Long Beach, CA 90802-4664

1  
2  
3  
4  
5  
6  
7  
8  
9  
10  
11  
12  
13  
14  
15  
16  
17  
18  
19  
20  
21  
22  
23  
24  
25  
26  
27  
28

I hereby certify that the foregoing resolution was adopted by the City Council of the City of Long Beach at its meeting of \_\_\_\_\_, 2014, by the following vote:

Ayes: Councilmembers: \_\_\_\_\_

\_\_\_\_\_

\_\_\_\_\_

\_\_\_\_\_

Noes: Councilmembers: \_\_\_\_\_

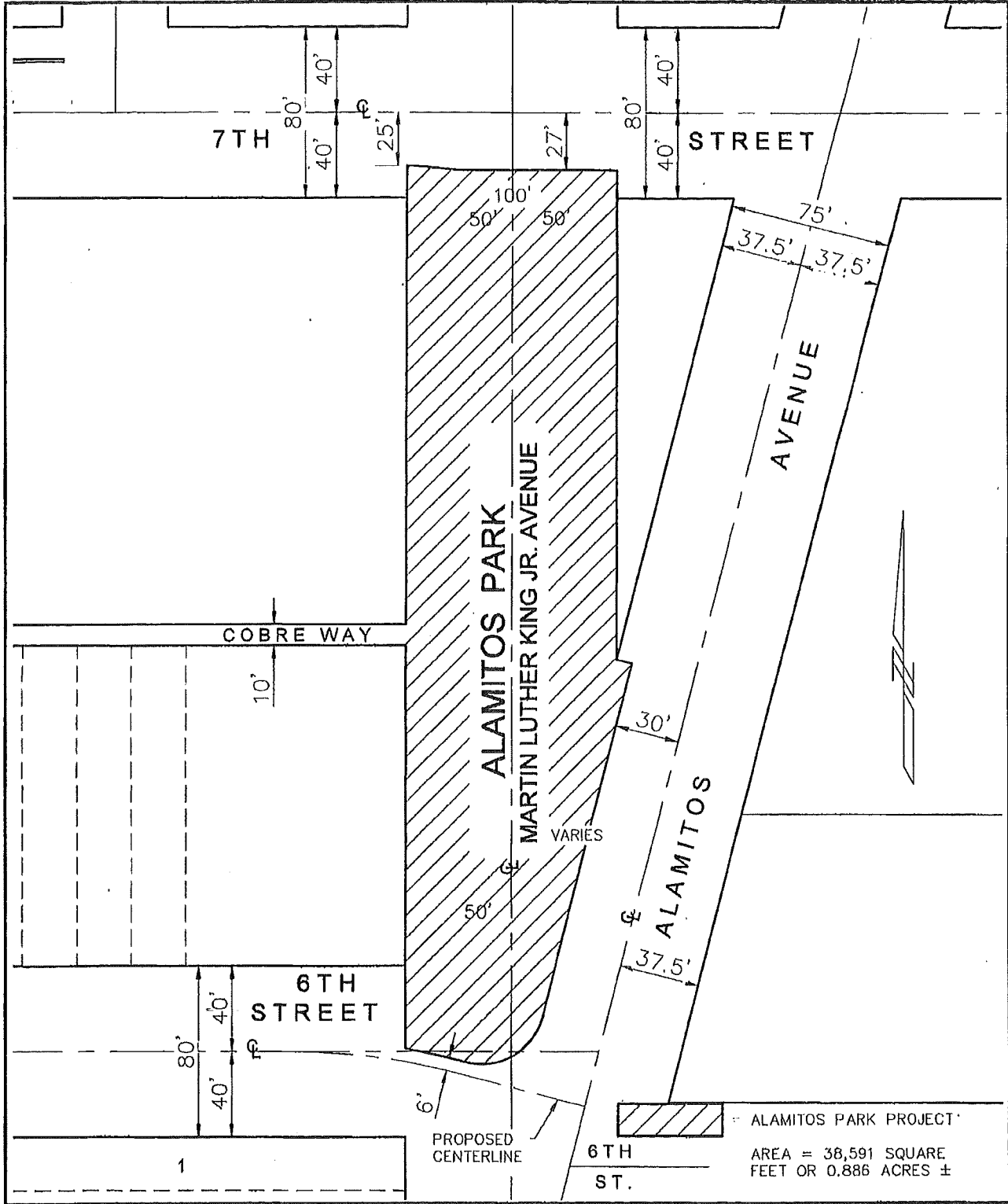
\_\_\_\_\_

Absent: Councilmembers: \_\_\_\_\_

\_\_\_\_\_

\_\_\_\_\_

City Clerk



**CITY OF LONG BEACH**  
 DEPT. OF PUBLIC WORKS  
 ENGINEERING BUREAU  
 SURVEY  
 333 W. OCEAN BL. 10TH FL.  
 LONG BEACH, CA 90802  
 (562) 570-6992

**EXHIBIT "A"**  
**ALAMOS PARK**  
**PROJECT**

**PREPARED FOR:**  
 DEPT. OF PUBLIC WORKS  
 ENGINEERING BUREAU  
 PROJECT MANAGEMENT  
 DIVISION

DATE:	02-19-14
JOB #	PWEN 18CIP-
	PW 3070-4910
DRAWN	M.J.F.
SCALE	1" = 60'
SHEET	1 OF 1

## CITY COUNCIL FINDINGS

### CLOSURE TO VEHICULAR TRAFFIC THE PORTION OF MARTIN LUTHER KING JUNIOR AVENUE BETWEEN 6<sup>TH</sup> STREET AND 7<sup>TH</sup> STREET

---

1. The subject right-of-way is unnecessary for vehicular use. This finding is based upon the following subfindings:
  - a) Although there will be a fifteen-foot wide paved driveway that runs through the park from Alamitos Avenue to E. Cobre Court, vehicular access will be closed by removable bollards at both ends. California National Guard Armory employees will access their parking lot via the alleys west of and south of their facility. The driveway is to be used exclusively by the Armory and only during their yearly exercise.
  - b) The interested City departments, including Fire and Police, have reviewed the proposed street closure and have no objections to this action.
2. Closure of the street to vehicular traffic will have no impact on the existing public utilities in this right-of-way.
3. The subject right-of-way will be improved for pedestrian access only and park-related amenities, such as landscaping, benches, and play apparatus.
4. The vacation of said rights-of-way will not have a significantly adverse environmental effect. This finding is based upon the following subfindings:
  - a) The right-of-way will remain available for public pedestrian use.
  - b) In conformance with the California Environmental Quality Act, Categorical Exemption Numbers 45-12 and 34-13 were issued for this project.

OFFICE OF THE CITY ATTORNEY  
CHARLES PARKIN, City Attorney  
333 West Ocean Boulevard, 11th Floor  
Long Beach, CA 90802-4664

1 RESOLUTION NO.  
2

3 A RESOLUTION OF INTENTION TO VACATE A  
4 PORTION OF THE PUBLIC RIGHT-OF-WAY ALONG  
5 MARTIN LUTHER KING, JR. AVENUE ON THE  
6 SOUTHWEST CORNER OF MARTIN LUTHER KING, JR.  
7 AVENUE AND 6TH STREET, IN THE CITY OF LONG  
8 BEACH, COUNTY OF LOS ANGELES, STATE OF  
9 CALIFORNIA, PURSUANT TO THE PUBLIC STREET,  
10 HIGHWAYS AND SERVICE EASEMENTS LAW (DIVISION  
11 9, PART 3, CALIFORNIA STREETS AND HIGHWAYS  
12 CODE); FIXING A TIME AND PLACE FOR HEARING ALL  
13 PERSONS INTERESTED IN OR OBJECTING TO THE  
14 PROPOSED VACATION  
15

16 The City Council of the City of Long Beach resolves as follows:

17 Section 1. The City Council of the City of Long Beach hereby elects to  
18 proceed under Division 9, Part 3, Chapter 3, of the California Streets and Highways Code  
19 (Section 8320 *et seq.*), as amended, generally known and referred as the "Public Street,  
20 Highways and Service Easements Law", and hereby declares its intention to vacate a  
21 portion of the public right-of-way on the west side of Martin Luther King, Jr. Avenue south  
22 of 6th Street, in the City of Long Beach, County of Los Angeles, State of California,  
23 described more particularly as follows:

24 That portion of Martin Luther King Jr. Avenue, width  
25 varies, formerly California Avenue, as shown on Town Site  
26 of Long Beach, in the City of Long Beach, County of Los  
27 Angeles, State of California, as shown on a map recorded in  
28 Book 19, pages 91 to 96, inclusive, of Miscellaneous

1  
2  
3  
4  
5  
6  
7  
8  
9  
10  
11  
12  
13  
14  
15  
16  
17  
18  
19  
20  
21  
22  
23  
24  
25  
26  
27  
28

Records, in the office of the County Recorder of said county, said portion being a strip of land 5.00 feet wide and is described as follows:

1. Commencing at the northeasterly corner of Lot 1, Block 49 of said Townsite of Long Beach, thence, along the northerly boundary of said lot 1, North 89°53'58" West 30.89 feet to the beginning of a non-tangent curve, concave southerly, having a radius of 268.00 feet, a line radial to said beginning bears North 05°03'06" East;

2. Thence, departing said boundary, easterly along said curve through a central angle of 06°40'40" an arc length of 31.23 feet to the intersection with the easterly boundary of said lot 1, said intersection being the Point of Beginning;

3. Thence, departing said boundary and continuing easterly along said curve having a radius of 268.00 feet, through a central angle of 01°05'37" an arc length of 5.12 feet to the intersection with a line parallel with and 5.00 feet easterly, measured at right angle, from the easterly boundary of said Block 49;

3. Thence, parallel with said boundary, South 00°05'50" West 48.25 feet;

4. Thence North 89°54'10" West 5.00 feet to the easterly boundary of Lot 5 of said Block 49;

5. Thence, along the easterly boundary said Block 49, North 00°05'50" East 49.33 feet to the Point of Beginning.

Contains 0.006 acres or 244 square feet, more or

OFFICE OF THE CITY ATTORNEY  
CHARLES PARKIN, City Attorney  
333 West Ocean Boulevard, 11th Floor  
Long Beach, CA 90802-4664

1 less.

2 Section 2. All of the foregoing real property is shown on the map or plan  
3 thereof, attached hereto as Exhibit "A", and on file in the office of the City Clerk.

4 Section 3. The City Council hereby fixes the \_\_\_ day of \_\_\_\_\_, 2015  
5 at the hour of 5:00 p.m., as the time and the City Council Chamber, Plaza Level of the  
6 City Hall, 333 West Ocean Boulevard, in the City of Long Beach, California, as the place  
7 for hearing all persons interested in or objecting to the proposed vacation.

8 Section 4. The City Council hereby directs that notice of said hearing on  
9 this proposed street vacation be published for at least two (2) successive weeks prior to  
10 the hearing and in the manner provided by Section 8322 of the State Streets and  
11 Highways Code.

12 Section 5. The City Council hereby directs that notice of this street  
13 vacation be posted conspicuously along the street proposed to be vacated at least two  
14 (2) weeks before the date set for hearing and in the manner provided by Section 8323 of  
15 the State Streets and Highways Code.

16 Section 6. This resolution shall take effect immediately upon its adoption  
17 by the City Council, and the City Clerk shall certify to the vote adopting this resolution.

18 ///

19 ///

20 ///

21 ///

22 ///

23 ///

24 ///

25 ///

26 ///

27 ///

28 ///



OFFICE OF THE CITY ATTORNEY  
CHARLES PARKIN, City Attorney  
333 West Ocean Boulevard, 11th Floor  
Long Beach, CA 90802-4664

1  
2  
3  
4  
5  
6  
7  
8  
9  
10  
11  
12  
13  
14  
15  
16  
17  
18  
19  
20  
21  
22  
23  
24  
25  
26  
27  
28

I hereby certify that the foregoing resolution was adopted by the City Council of the City of Long Beach at its meeting of \_\_\_\_\_, 2015 by the following vote:

Ayes: Councilmembers: \_\_\_\_\_

\_\_\_\_\_

\_\_\_\_\_

\_\_\_\_\_

Noes: Councilmembers: \_\_\_\_\_

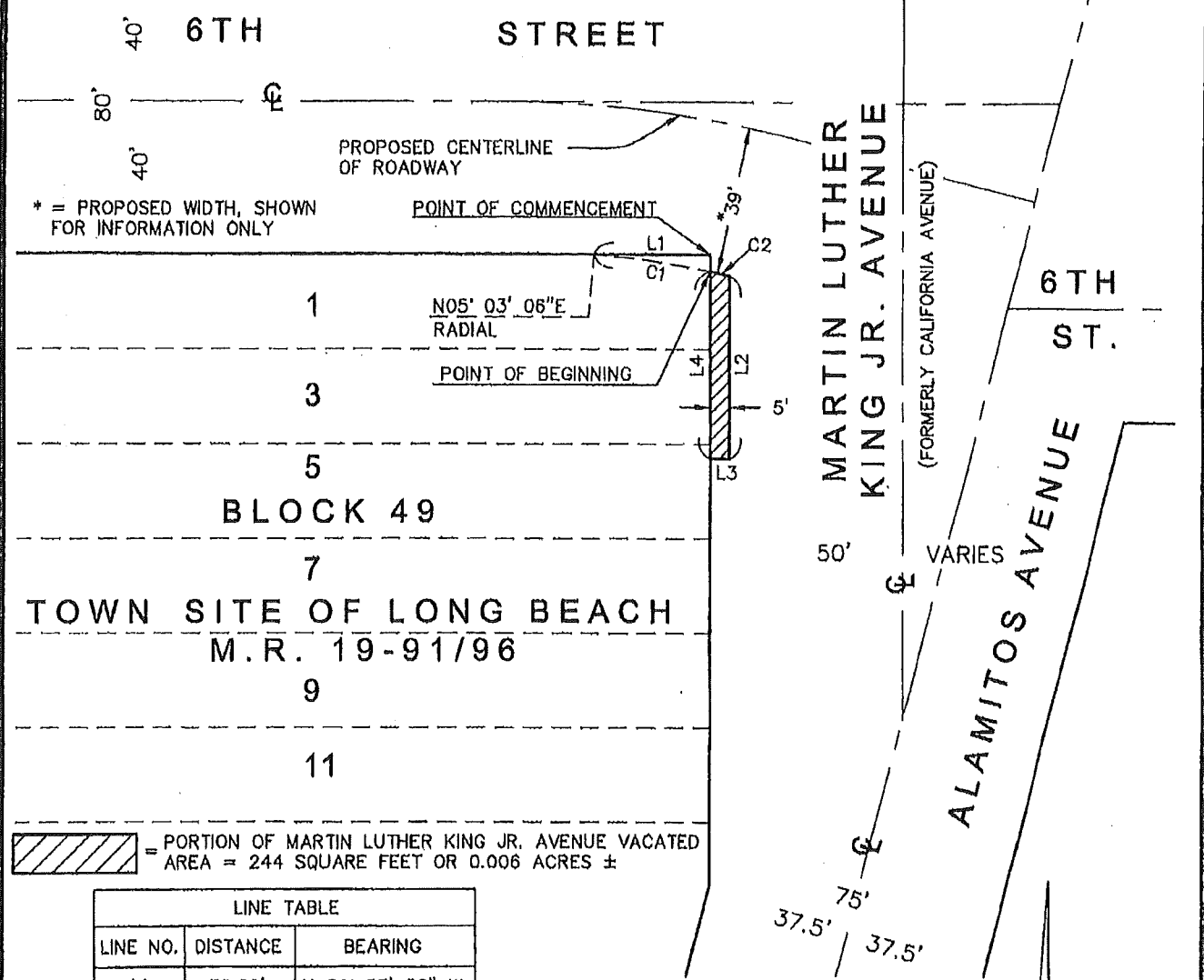
\_\_\_\_\_

Absent: Councilmembers: \_\_\_\_\_

\_\_\_\_\_

\_\_\_\_\_  
City Clerk

NOTE: THIS EXHIBIT DOES NOT CONSTITUTE A LAND SURVEY AND IS ONLY INTENDED TO ILLUSTRATE THE ATTACHED LEGAL DESCRIPTION



\* = PROPOSED WIDTH, SHOWN FOR INFORMATION ONLY

LINE TABLE		
LINE NO.	DISTANCE	BEARING
L1	30.89'	N 89° 53' 58" W
L2	48.25'	S 00° 05' 50" W
L3	5.00'	N 89° 54' 10" W
L4	49.33'	N 00° 05' 50" E

CURVE TABLE			
CURVE NO.	DELTA	RADIUS	LENGTH
C1	06° 40' 40"	268.00'	31.23'
C2	01° 05' 37"	268.00'	5.12'



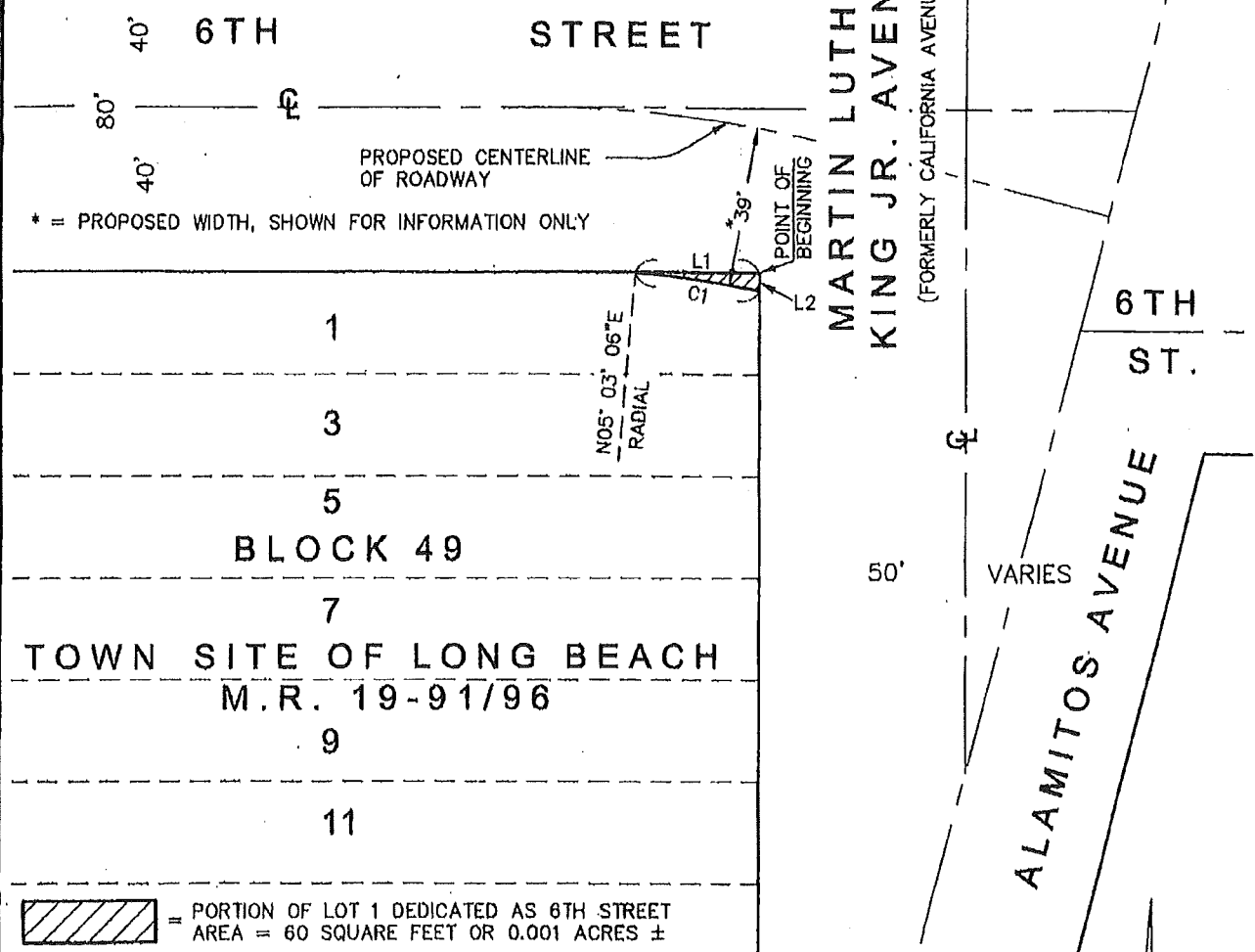
**CITY OF LONG BEACH**  
 DEPT. OF PUBLIC WORKS  
 ENGINEERING BUREAU  
 SURVEY  
 333 W. OCEAN BL. 10TH FL.  
 LONG BEACH, CA 90802  
 (562) 570-6992

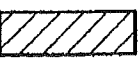
**EXHIBIT "A"**  
**PAGE 1 OF 2**  
**VACATION OF A**  
**PORTION OF MARTIN**  
**LUTHER KING JR.**  
**AVENUE**

**PREPARED FOR:**  
 DEPT. OF PUBLIC WORKS  
 ENGINEERING BUREAU  
 PROJECT MANAGEMENT  
 DIVISION

DATE:	12-23-13
JOB #	PWEN 18CIP-
	PW 3070-4910
DRAWN	M.J.F.
SCALE	1" = 40'
SHEET	1 OF 1

NOTE: THIS EXHIBIT DOES NOT  
CONSTITUTE A LAND SURVEY AND IS  
ONLY INTENDED TO ILLUSTRATE THE  
ATTACHED LEGAL DESCRIPTION



 = PORTION OF LOT 1 DEDICATED AS 6TH STREET  
AREA = 60 SQUARE FEET OR 0.001 ACRES ±

LINE TABLE		
LINE NO.	DISTANCE	BEARING
L1	30.89'	N 89° 53' 58" W
L2	4.50'	N 00° 05' 50" E

CURVE TABLE			
CURVE NO.	DELTA	RADIUS	LENGTH
C1	06° 40' 40"	268.00'	31.23'



**CITY OF LONG BEACH**  
DEPT. OF PUBLIC WORKS  
ENGINEERING BUREAU  
SURVEY  
333 W. OCEAN BL. 10TH FL.  
LONG BEACH, CA 90802  
(562) 570-6992

**EXHIBIT "A"**  
**PAGE 2 OF 2**  
**DEDICATION OF A**  
**PORTION OF LOT 1**  
**AS 6TH STREET**

**PREPARED FOR:**  
DEPT. OF PUBLIC WORKS  
ENGINEERING BUREAU  
PROJECT MANAGEMENT  
DIVISION

DATE:	12-23-13
JOB #	PWEN 18CIP--
	PW 3070-4910
DRAWN	M.J.F.
SCALE	1" = 40'
SHEET	1 OF 1

## CITY COUNCIL FINDINGS

### VACATION OF A PORTION OF MARTIN LUTHER KING, JR AVENUE SOUTH OF 6<sup>TH</sup> STREET

---

1. The subject right-of-way is unnecessary for present or prospective public use.

This finding is based upon the following subfindings:

- a) On February 5, 2015 the Planning Commission is expected to determine that the subject vacation is consistent with the General Plan, as required in Section 8313 of the Public Streets, Highways and Service Easements Vacation Law.
- b) The interested City departments, including Fire and Police, have reviewed the proposed right-of-way vacation and have no objections to this action.
- c) The rights-of-way would not be useful for exclusive bicycle pathway purposes.

2. The vacation of said rights-of-way will not have a significantly adverse environmental effect.

This finding is based upon the following subfindings:

- a) The right-of-way is not and will not be needed for public use.
- d) In conformance with the California Environmental Quality Act, Categorical Exemption Number 45-12 and 34-13 were issued for this project.

EXHIBIT B

OFFICE OF THE CITY ATTORNEY  
CHARLES PARKIN, City Attorney  
333 West Ocean Boulevard, 11th Floor  
Long Beach, CA 90802-4664

1  
2  
3  
4  
5  
6  
7  
8  
9  
10  
11  
12  
13  
14  
15  
16  
17  
18  
19  
20  
21  
22  
23  
24  
25  
26  
27  
28

RESOLUTION NO.

A RESOLUTION ORDERING THE VACATION OF A PORTION OF THE PUBLIC RIGHT-OF-WAY ALONG MARTIN LUTHER KING, JR. AVENUE ON THE SOUTHWEST CORNER OF MARTIN LUTHER KING, JR. AVENUE AND 6TH STREET, IN THE CITY OF LONG BEACH, COUNTY OF LOS ANGELES, STATE OF CALIFORNIA

WHEREAS, the City Council of the City of Long Beach, did heretofore, on the \_\_\_\_ of \_\_\_\_\_, 2015, by Resolution No. RES-\_\_\_\_\_, declare its intention to order the vacation, pursuant to the provisions of the Public Streets, Highways, and Service Easements Vacation Law (California Streets and Highways Code, Section 8300 *et seq.*), a portion of the public right-of-way on the west side of Martin Luther King, Jr. Avenue south of 6th Street, in the City of Long Beach, County of Los Angeles, State of California, described more particularly as follows:

That portion of Martin Luther King Jr. Avenue, width varies, formerly California Avenue, as shown on Town Site of Long Beach, in the City of Long Beach, County of Los Angeles, State of California, as shown on a map recorded in Book 19, pages 91 to 96, inclusive, of Miscellaneous Records, in the office of the County Recorder of said county, said portion being a strip of land 5.00 feet wide and is described as follows:

1. Commencing at the northeasterly corner of Lot 1, Block 49 of said Townsite of Long Beach, thence, along the northerly boundary of said lot 1, North 89°53'58" West

1 30.89 feet to the beginning of a non-tangent curve, concave  
2 southerly, having a radius of 268.00 feet, a line radial to said  
3 beginning bears North 05°03'06" East;

4 2. Thence, departing said boundary, easterly  
5 along said curve through a central angle of 06°40'40" an arc  
6 length of 31.23 feet to the intersection with the easterly  
7 boundary of said lot I, said intersection being the Point of  
8 Beginning;

9 3. Thence, departing said boundary and  
10 continuing easterly along said curve having a radius of  
11 268.00 feet, through a central angle of 01°05'37" an arc  
12 length of 5.12 feet to the intersection with a line parallel with  
13 and 5.00 feet easterly, measured at right angle, from the  
14 easterly boundary of said Block 49;

15 3. Thence, parallel with said boundary, South  
16 00°05'50" West 48.25 feet;

17 4. Thence North 89°54'10" West 5.00 feet to the  
18 easterly boundary of Lot 5 of said Block 49;

19 5. Thence, along the easterly boundary said  
20 Block 49, North 00°05'50" East 49.33 feet to the Point of  
21 Beginning.

22 Contains 0.006 acres or 244 square feet, more or  
23 less.

24 WHEREAS, the City Council did, at said time, fix Tuesday, the \_\_\_\_ day of  
25 \_\_\_\_\_, 2015, at the hour of 5:00 p.m., as the time and the City Council Chamber,  
26 Plaza Level of the City Hall, 333 West Ocean Boulevard, in the City of Long Beach,  
27 California, as the place for hearing for all persons interested in or objecting to the  
28 proposed vacation to appear and be heard; and

1 WHEREAS, notice of the resolution of the intention to vacate, stating the  
2 time and place of said hearing, was duly posted in the manner prescribed by law; and

3 WHEREAS, said hearing was called and held before the City Council at the  
4 time and place so fixed and evidence taken and received on the matter of said proposed  
5 vacation, and the City Council, upon said evidence, now makes those findings of fact set  
6 forth in said Exhibit "B", attached hereto and by this reference made a part hereof;

7 NOW, THEREFORE, the City Council of the City of Long Beach resolves as  
8 follows:

9 Section 1. Pursuant to the foregoing resolution of intention, the  
10 proceedings had thereunder, Vacation Sketch No. \_\_\_\_\_ showing a portion of the public  
11 right-of-way on the west side of Martin Luther King, Jr. Avenue south of 6th Street to be  
12 vacated by the City of Long Beach attached hereto as Exhibit "A", and the City Council  
13 Findings attached hereto as Exhibit "B", said City Council of the City of Long Beach  
14 hereby makes its resolution vacating and closing a portion of the street hereinabove  
15 described.

16 Section 2. That this resolution shall take effect immediately upon its  
17 adoption by the City Council, and the City Clerk is hereby instructed to certify to the  
18 adoption thereof, and to cause a certified copy to be recorded in the Office of the County  
19 Recorder of the County of Los Angeles, California.

20 ///

21 ///

22 ///

23 ///

24 ///

25 ///

26 ///

27 ///

28 ///

1  
2  
3  
4  
5  
6  
7  
8  
9  
10  
11  
12  
13  
14  
15  
16  
17  
18  
19  
20  
21  
22  
23  
24  
25  
26  
27  
28

I hereby certify that the foregoing resolution was adopted by the City Council of the City of Long Beach at its meeting of \_\_\_\_\_, 2015 by the following vote:

Ayes: Councilmembers: \_\_\_\_\_

\_\_\_\_\_

\_\_\_\_\_

\_\_\_\_\_

Noes: Councilmembers: \_\_\_\_\_

\_\_\_\_\_

Absent: Councilmembers: \_\_\_\_\_

\_\_\_\_\_

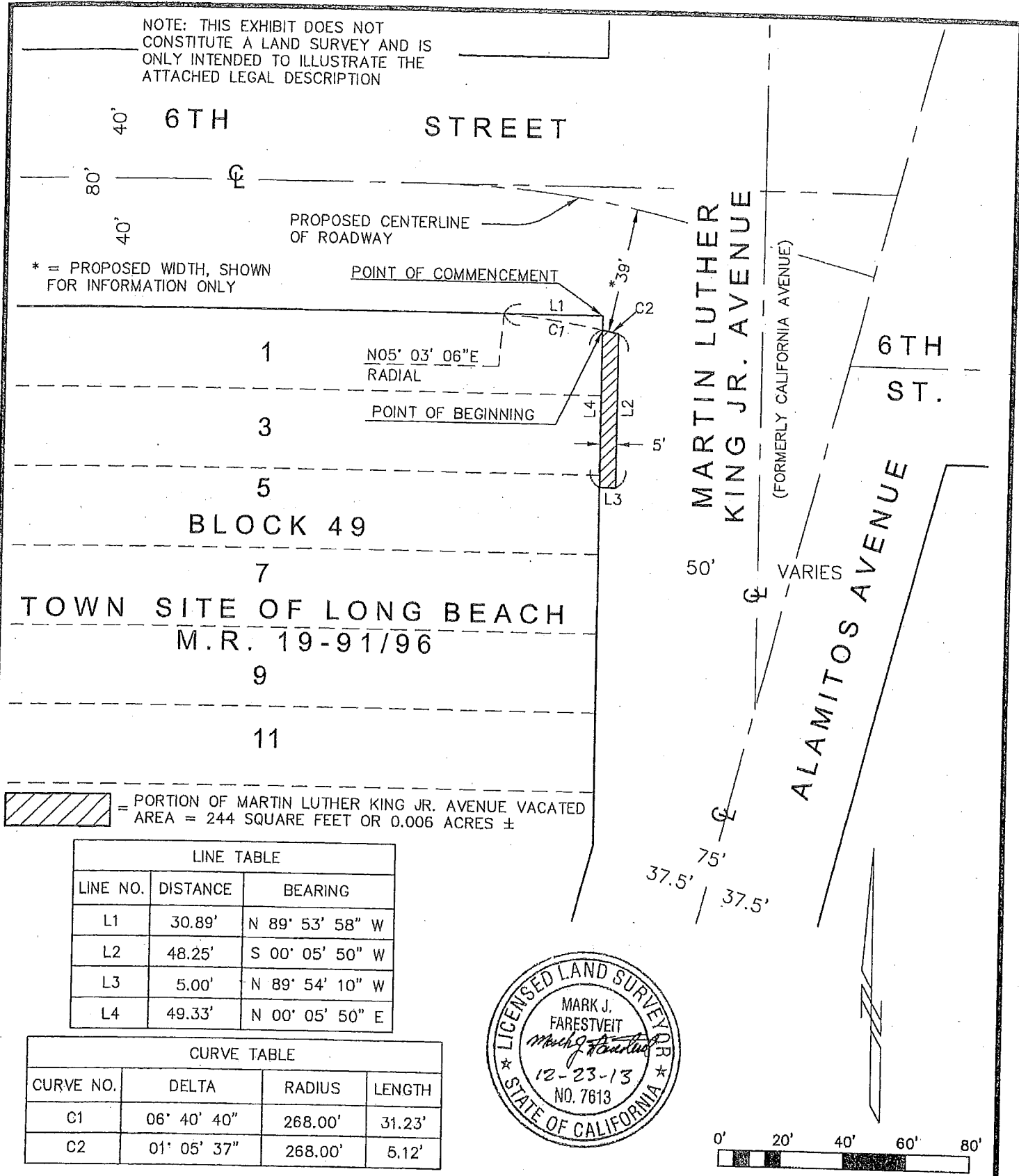
\_\_\_\_\_

City Clerk

OFFICE OF THE CITY ATTORNEY  
CHARLES PARKIN, City Attorney  
333 West Ocean Boulevard, 11th Floor  
Long Beach, CA 90802-4664



NOTE: THIS EXHIBIT DOES NOT  
CONSTITUTE A LAND SURVEY AND IS  
ONLY INTENDED TO ILLUSTRATE THE  
ATTACHED LEGAL DESCRIPTION



\* = PROPOSED WIDTH, SHOWN  
FOR INFORMATION ONLY

POINT OF COMMENCEMENT

N05° 03' 06"E  
RADIAL

POINT OF BEGINNING

BLOCK 49


TOWN SITE OF LONG BEACH  
M.R. 19-91/96

MARTIN LUTHER  
KING JR. AVENUE  
(FORMERLY CALIFORNIA AVENUE)

(FORMERLY CALIFORNIA AVENUE)

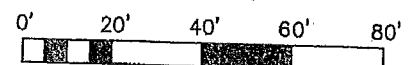
ALAMOS AVENUE

6TH  
ST.

 = PORTION OF MARTIN LUTHER KING JR. AVENUE VACATED  
AREA = 244 SQUARE FEET OR 0.006 ACRES ±

LINE TABLE		
LINE NO.	DISTANCE	BEARING
L1	30.89'	N 89° 53' 58" W
L2	48.25'	S 00° 05' 50" W
L3	5.00'	N 89° 54' 10" W
L4	49.33'	N 00° 05' 50" E

CURVE TABLE			
CURVE NO.	DELTA	RADIUS	LENGTH
C1	06° 40' 40"	268.00'	31.23'
C2	01° 05' 37"	268.00'	5.12'



CITY OF LONG BEACH  
DEPT. OF PUBLIC WORKS  
ENGINEERING BUREAU  
SURVEY  
333 W. OCEAN BL. 10TH FL.  
LONG BEACH, CA 90802  
(562) 570-6992

EXHIBIT "A"  
VACATION OF A  
PORTION OF MARTIN  
LUTHER KING JR.  
AVENUE

PREPARED FOR:  
DEPT. OF PUBLIC WORKS  
ENGINEERING BUREAU  
PROJECT MANAGEMENT  
DIVISION

DATE:	12-23-13
JOB #	PWEN 18CIP-
	PW 3070-4910
DRAWN	M.J.F.
SCALE	1" = 40'
SHEET	1 OF 1

## CITY COUNCIL FINDINGS

### VACATION OF A PORTION OF MARTIN LUTHER KING, JR AVENUE SOUTH OF 6<sup>TH</sup> STREET

---

1. The subject right-of-way is unnecessary for present or prospective public use.

This finding is based upon the following subfindings:

- a) On February 5, 2015 the Planning Commission is expected to determine that the subject vacation is consistent with the General Plan, as required in Section 8313 of the Public Streets, Highways and Service Easements Vacation Law.
- b) The interested City departments, including Fire and Police, have reviewed the proposed right-of-way vacation and have no objections to this action.
- c) The rights-of-way would not be useful for exclusive bicycle pathway purposes.

2. The vacation of said rights-of-way will not have a significantly adverse environmental effect.

This finding is based upon the following subfindings:

- a) The right-of-way is not and will not be needed for public use.
- d) In conformance with the California Environmental Quality Act, Categorical Exemption Number 45-12 and 34-13 were issued for this project.

EXHIBIT B