

# Phase I Improvements to the Terminal Area at the Long Beach Airport

LGB Project Newsletter

February 2012



## Work Progress

- Finished the slab on grade concrete pour between grid lines 18 through 26 and A through C at the North Holdroom.
- Completed demolition of existing 'S1' Holdroom and Canopy.
- Finished footing and grade beam concrete pours at South Holdroom and completed structural steel erection. The welding and connections for structural steel is ongoing at the South Holdroom
- Finished installation of grease trap vault at the North holdroom.
- Finished installation of Mechanical, electrical and plumbing equipment hangers and framing clips at North Holdroom. Ongoing installation of metal studs and fireproofing application at the North Holdroom.
- Installation of underground utilities at the South Holdroom is ongoing.
- Ongoing over excavation and re-compaction for the new Security Check point.

## Upcoming Work in February 2012

- Form and pour the rooftop equipment pads at the North Holdroom.
- Start with roofing at the high roof at the North Holdroom.
- Start mullion and glass mockup at the North Holdroom.
- Finish steel welding and deck installation and concrete pour at the lower roof deck for the South Holdroom.
- Start with preparation for the slab-on-grade at the South Holdroom.
- Excavate for footings and grade-beams at the Security Check Point.
- Finish steel rebar installation and pour concrete footings for the Security Check Point.

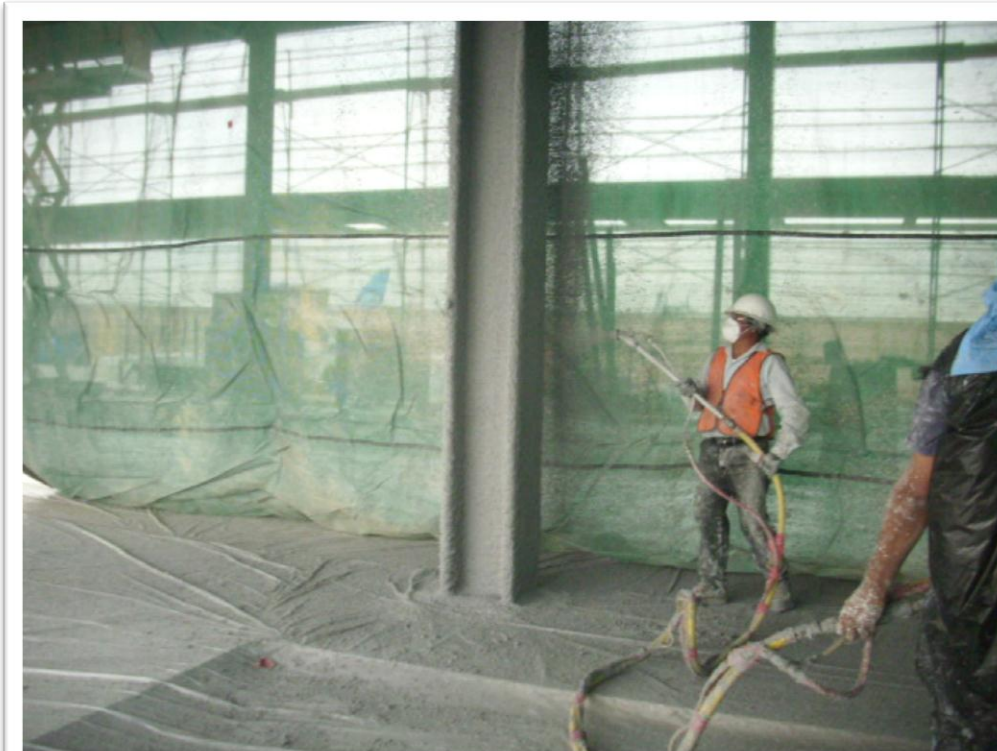


# LGB - Project Newsletter

February 2012 Progress Photos



**Concrete  
Slab on Grade  
Pour #2 at North  
Holdroom**



**Fireproofing of  
Steel at North  
Holdroom**



**Welding of  
Framing clips at  
North Holdroom**



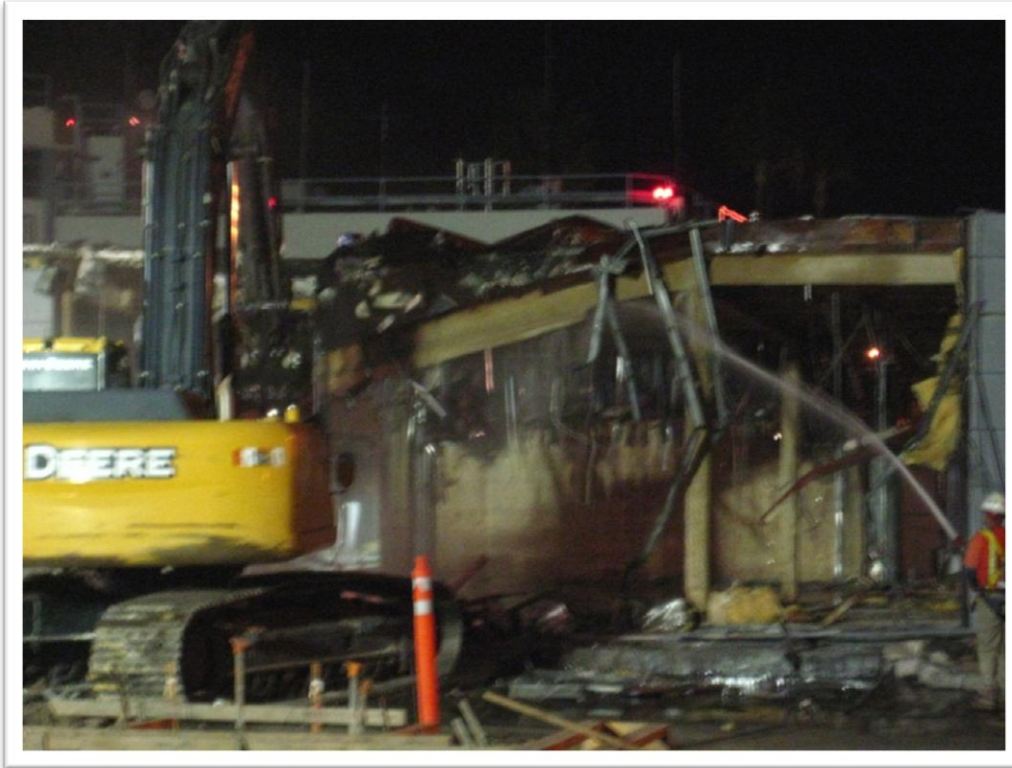
**Welded Clips at  
North Holdroom  
East Wall**



**Framed Exterior  
Wall East side North  
Holdroom**



**Demolition of  
Security check point**



**Demolition of  
Security check point**



**Concrete Footing  
Pour at South  
Holdroom**



**Start of Steel  
Erection South  
Holdroom**



**South Holdroom  
Steel Erection**



**South Holdroom  
Steel Canopy  
Erection**



**Garden Area and  
South Holdroom  
Steel**