

# Senate Bill 1730 - Impact on Long Beach City Elections

# Presentation Purpose

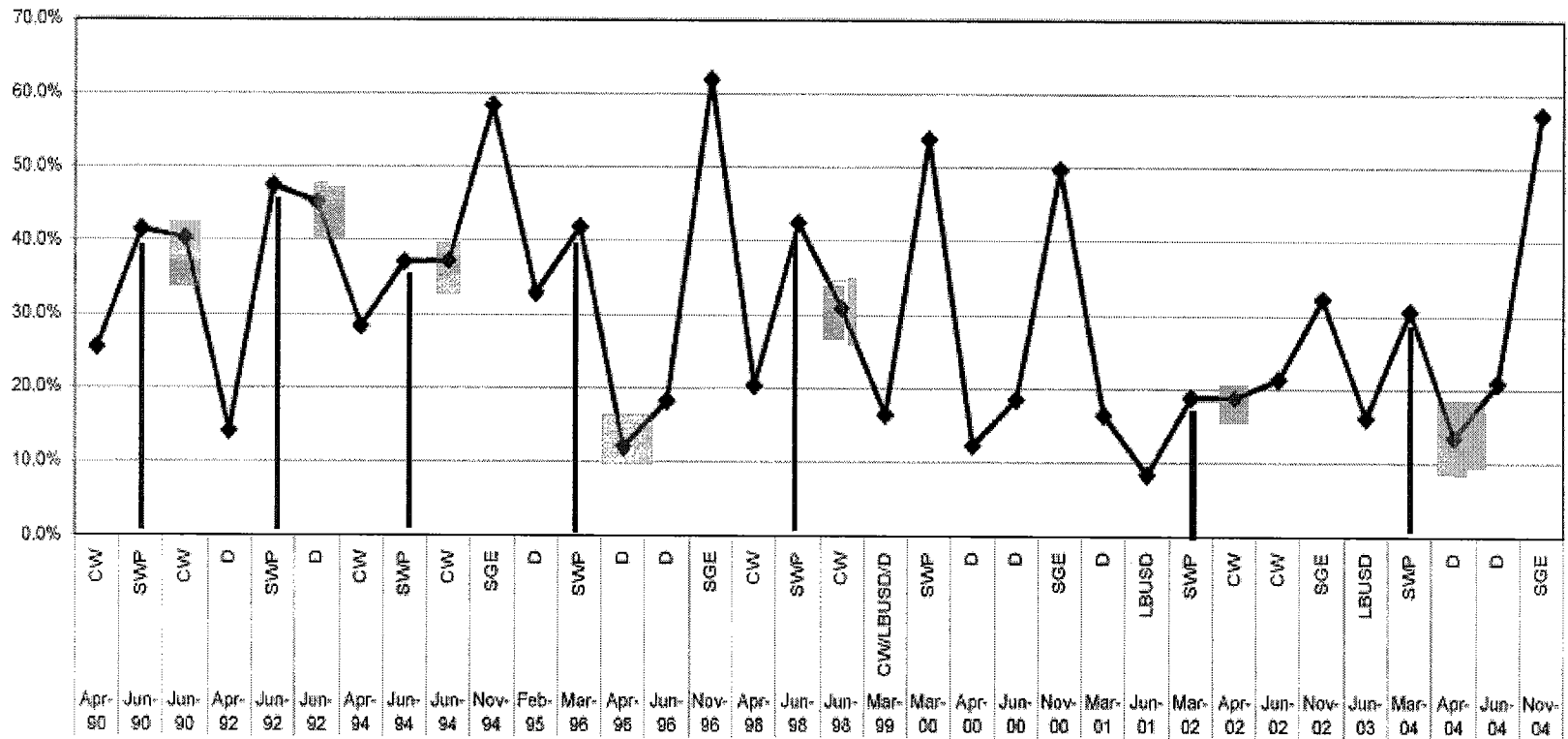
## Council Discussion:

Concurrent versus Consolidated Election Impacts

## Council's Conceptual Approval:

Whether to Pursue Concurrent or Consolidated Election.

## CITY VOTER TURNOUT 1990 TO 2004



4/12/2005

City of Long Beach City Clerk  
Department

# City & County Ballots

I HAVE VOTED - HAVE YOUR  
**OFFICIAL BALLOT**  
 CITY OF LONG BEACH  
 PRIMARY NOMINATING ELECTION  
 TUESDAY, APRIL 13, 2004  
THIS BALLOT MUST BE REMOVED  
 AND RETAINED BY THE VOTER

Mark your choice(s) by  
 FILLING IN OVAL COMPLETELY  
 with a BLACK OR DARK COLORED PEN ONLY.

11 11 11172

**CITY OF LONG BEACH**

For Member of the City Council  
 District No. 8 **Vote for ONE**

**KENNEDY COLLINS**  
 Quality Coordinator

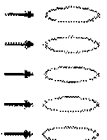
**TERRY G. JENSEN**  
 Business - Property Consultant

**ROB WEBB**  
 City Councilman, Eighth District

**RAE M. GABELICH**  
 Foundation President/Businesswoman

**END OF BALLOT**

11 Long Beach, CA 2004



**FOR DEMONSTRATION USE ONLY**

FILL IN CIRCLE WITH MARKER PROVIDED

1	27	53	79	105	131	157	183	209	235	261	287
2	28	54	80	106	132	158	184	210	236	262	288
3	29	55	81	107	133	159	185	211	237	263	289
4	30	56	82	108	134	160	186	212	238	264	290
5	31	57	83	109	135	161	187	213	239	265	291
6	32	58	84	110	136	162	188	214	240	266	292
7	33	59	85	111	137	163	189	215	241	267	293
8	34	60	86	112	138	164	190	216	242	268	294
9	35	61	87	113	139	165	191	217	243	269	295
10	36	62	88	114	140	166	192	218	244	270	296
11	37	63	89	115	141	167	193	219	245	271	297
12	38	64	90	116	142	168	194	220	246	272	298
13	39	65	91	117	143	169	195	221	247	273	299
14	40	66	92	118	144	170	196	222	248	274	300
15	41	67	93	119	145	171	197	223	249	275	301
16	42	68	94	120	146	172	198	224	250	276	302
17	43	69	95	121	147	173	199	225	251	277	303
18	44	70	96	122	148	174	200	226	252	278	304
19	45	71	97	123	149	175	201	227	253	279	305
20	46	72	98	124	150	176	202	228	254	280	306
21	47	73	99	125	151	177	203	229	255	281	307
22	48	74	100	126	152	178	204	230	256	282	308
23	49	75	101	127	153	179	205	231	257	283	309
24	50	76	102	128	154	180	206	232	258	284	310
25	51	77	103	129	155	181	207	233	259	285	311
26	52	78	104	130	156	182	208	234	260	286	312

# Risks of Concurrent Election (RR/CC May 11, 2004)

- Separate Voting Systems
- Separate Voting Tables in Each Poll
- Potential For Error Very High
- Risk of Co-mingled Ballots
- Considerable Voter Drop-Off
- Confusing to Poll Workers and Voters
- Additional Costs for Polls
- Duplicate Sample & Absentee Ballots Create Confusion
- Later Reporting of Election Results

# Pros & Cons of Consolidation

## Pro

- One Voting System in June
- Higher Voter Turnout
- Potential Cost Savings (\$400,000 est.)

## Con

- Dilutes Home Rule
- Influence of Political Parties
- Less Voter Attentiveness & Knowledge

# Consolidation Implications

- Change of Voting Systems From April to June 2006
- Different Write-In Method
- Perceived Impact on Home Rule
- Timeliness of Election Night Returns
- Higher Voter Turnout May Impact Campaign Costs
- Voter Education
- City Support to RR/CC to Ensure Success
- Primary Election Traffic – Seven Political Parties

# Statewide Primary Ballot Order

- Statewide Offices
- United State Senator
- United States Representative
- State Senator
- State Assembly
- County Central Committees
- State & County Judicial Offices
- College & School Districts
- County Offices
- City Offices
- Special Districts
- Measures Submitted to Voters



# Consolidation Challenges

- Overcome 2- Day Turnaround Problem
- Mitigate Residual Vote Rate
- Enhance Voter Education Program
- Confirm Potential Cost Savings
- Ballot Capacity Limitation
- November 2005 Special Election Not Decided
- Concurrent May Be A Fall Back Position

# Council Discussion & Direction

- Discuss Merits of Consolidation
- Provide Conceptual Direction to Staff