

CITY OF LONG BEACH

R-16

DEPARTMENT OF DEVELOPMENT SERVICES

333 West Ocean Blvd., 3rd Floor Long Beach, CA 90802 Phone: 570.6615 Fax: 570.6215

March 24, 2009

HONORABLE MAYOR AND CITY COUNCIL
City of Long Beach
California

RECOMMENDATION:

Authorize the City Manager to adopt resolution making certain findings regarding the construction of certain public improvements on The Promenade north of Third Street and south of Ocean Boulevard, with Redevelopment (Promenade Improvements) for the Downtown Redevelopment Project; and

Adopt resolution making certain findings regarding the construction of certain public improvements on The Promenade north of Third Street and south of Ocean, with Redevelopment Funds (Promenade Improvements) for the West Beach Redevelopment Project. (Districts 1, 2)

DISCUSSION

In April and May 2007, the Redevelopment Agency (Agency) and the City Council adopted resolutions making findings regarding the construction of public improvements on The Promenade right-of-way between Ocean Boulevard and Third Street, including the amphitheater, with funding provided by the Downtown and West Beach Redevelopment Project Areas. An extension of the improvement area will include the terminus of The Promenade north of Third Street, by the WPA Mosaic Mural Park (Mural Park), and south of Ocean Boulevard in Victory Park (Exhibit A – Site Map). This will address these under-utilized open spaces and provide an important pedestrian link from the various Downtown neighborhoods, including West Gateway, Civic Center, Pine Avenue, North Pine, and East Village, to the Convention Center and waterfront venues on the south end of The Promenade, and retail, restaurants, and residences to the north.

Enhancements will include landscaping, pavement, lighting, seating, public art, and a new pedestrian connection from Pine Avenue to Promenade South. Improvements to the Mural Park located in front of the CityPlace Parking Structure will create a destination for residents and visitors to enjoy the park setting and the historic WPA Mosaic Mural. The area is also important to Downtown mobility, serving cyclists using the proposed dedicated bike lane on Third Street, and as an access point for the Long Beach Transit Passport that serves the greater Downtown and the MTA Blue Line, with parking available for transit patrons in the adjacent parking structure.

Before the Agency may proceed with the aforementioned project, California Redevelopment Law requires that the Agency adopt a resolution making the following findings:

- The construction of such public improvements are of benefit to the redevelopment project area or the immediate neighborhood in which the public improvement project is located.

- No other reasonable means of financing the public improvements are available to the community.
- The payment of Agency funds for the construction of public improvements will assist in the elimination of one or more blighting conditions within the project area.

Resolutions making the necessary findings regarding the construction of these public improvements with redevelopment funds from the Downtown and West Beach Redevelopment Project Areas are attached. The Agency approved similar resolutions at their meeting on March 2, 2009.

The estimated cost for the project (including public art) totals approximately \$3.5 million. As plans and specifications are completed, bid construction contracts will be submitted to the Agency for review and approval.

This letter was reviewed by Chief Assistant City Attorney Heather Mahood on March 3, 2009 and by Budget Management Officer Victoria Bell on March 4, 2009.

SUSTAINABILITY

Water conserving plant materials and energy efficient lights will be used for this project.

TIMING CONSIDERATIONS

City Council action is requested on March 24, 2009, in order to begin design and construction of improvements.

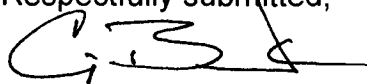
FISCAL IMPACT

Funding for the project is budgeted in the Downtown Redevelopment Project Area Fund (RD 224) in Fiscal Years 2009 through 2011. There will be no fiscal impact to the General Fund as a result of the recommendation.

SUGGESTED ACTION:

Approve recommendation.

Respectfully submitted,



CRAIG BECK
DIRECTOR OF DEVELOPMENT SERVICES

CB:AJB:CSM:rw

P:\Redev\City Council Letters\Mural-Victory Parks.v5.doc

Attachments: Exhibit A – Site Map

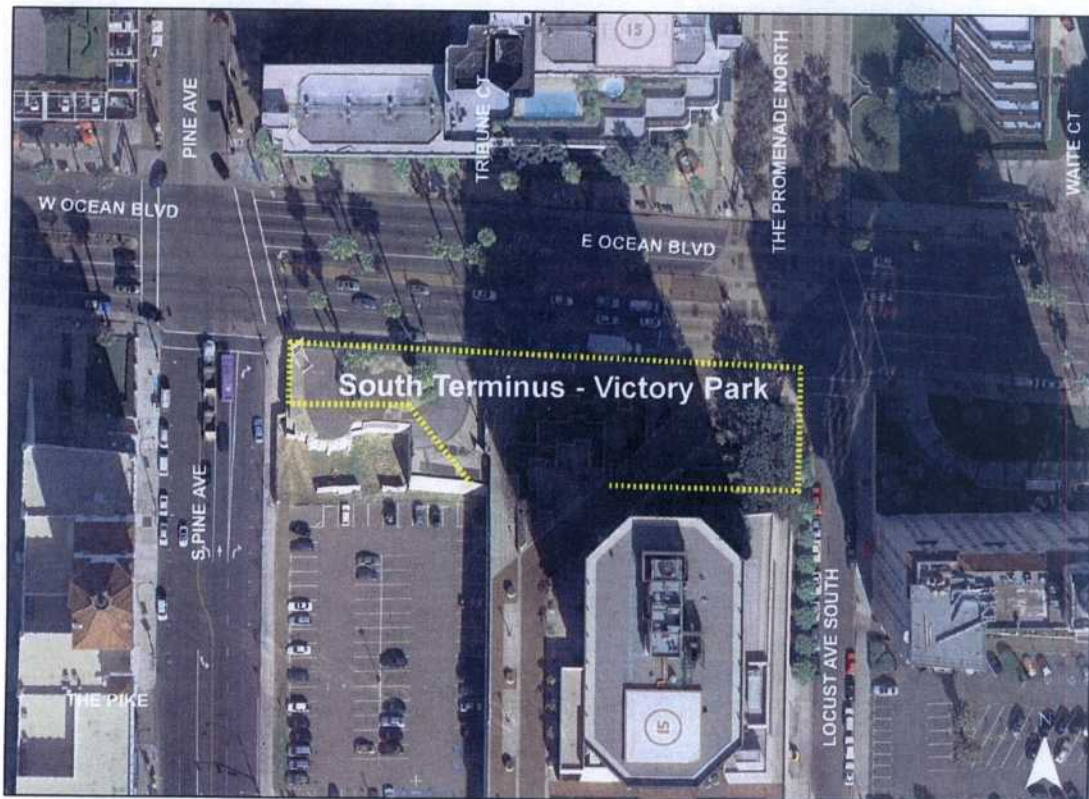
City Council Resolutions (2)

APPROVED:



PATRICK H. WEST
CITY MANAGER

Exhibit A



RESOLUTION NO.

A RESOLUTION OF THE CITY COUNCIL OF THE
CITY OF LONG BEACH MAKING CERTAIN FINDINGS
REGARDING THE CONSTRUCTION OF CERTAIN PUBLIC
IMPROVEMENTS WITH REDEVELOPMENT FUNDS
(PROMENADE IMPROVEMENTS)

WHEREAS, the City Council of the City of Long Beach adopted and approved a certain Redevelopment Plan (the "Redevelopment Plan") for the Downtown Redevelopment Project (the "Project"); and

WHEREAS, in furtherance of the Project and the immediate neighborhood in which the Project is located, the Redevelopment Agency of the City of Long Beach, California (the "Agency"), has recognized the need for certain public improvements, which improvements will be located within the boundaries of the Project, and proposes to use redevelopment funds to finance the improvements; and

WHEREAS, Section 33445 of the California Community Redevelopment Law (Health and Safety Code Section 33000 et seq.) requires the Agency to make certain findings prior to the acquisition of land and construction of public improvements or facilities thereon; and

WHEREAS, Section 33678 of the Community Redevelopment Law provides that under certain conditions tax increment funds shall not be subject to the appropriations limitation of Article XIIIB of the California Constitution;

NOW, THEREFORE, the City Council of the City of Long Beach resolves as follows:

Section 1. The City Council determines that the construction of public improvements, more particularly described in Exhibit "A", are of benefit to the Project and the immediate neighborhood in which the Project is located. This finding is supported by

1 the following facts:

2 These improvements will assist in the removal of blight by providing
3 useable open space for downtown employees and residents, improving pedestrian safety
4 and flow through the downtown, and promoting business attraction along The Promenade
5 and nearby streets.

6
7 Section 2. The City Council determines that no other reasonable means
8 of financing the above-described improvements are available to the community. This
9 finding is supported by the following facts:

10 Before the passage of Proposition 13, most of the City's general operating
11 and capital improvements were funded through property taxes. However, the initiative
12 placed severe constraints on the City's ability to use property tax revenues to offset
13 increases in operating and capital costs. It has also been difficult for the City, by itself, to
14 provide sufficient funds to support the construction of major public improvements. In
15 fiscal year 2008-2009, the limited resources of the City's General Fund are committed to
16 previously incurred obligations and planned projects.

17
18 Section 3. The City Council further determines that the payment of funds
19 for the construction of the public improvements will assist in the elimination of one or
20 more blighting conditions within the Project, and is consistent with the implementation
21 plan adopted pursuant to Health and Safety Code Section 33490.

22
23 Section 4. This resolution shall take effect immediately upon its adoption
24 by the City Council, and the City Clerk shall certify the vote adopting this resolution.

25 ///

26 ///

27 ///

28 ///

I hereby certify that the foregoing resolution was adopted by the City Council of the City of Long Beach at its meeting of _____, 2009 by the following vote:

Ayes: Councilmembers: _____

Noes: Councilmembers: _____

Absent: Councilmembers: _____

City Clerk

EXHIBIT "A"

DESCRIPTION OF THE PUBLIC IMPROVEMENTS

The improvement of The Promenade including new paving, lighting, landscaping, public art, pedestrian seating and similar improvements within the area described in Exhibit A-1.

Exhibit A-1

