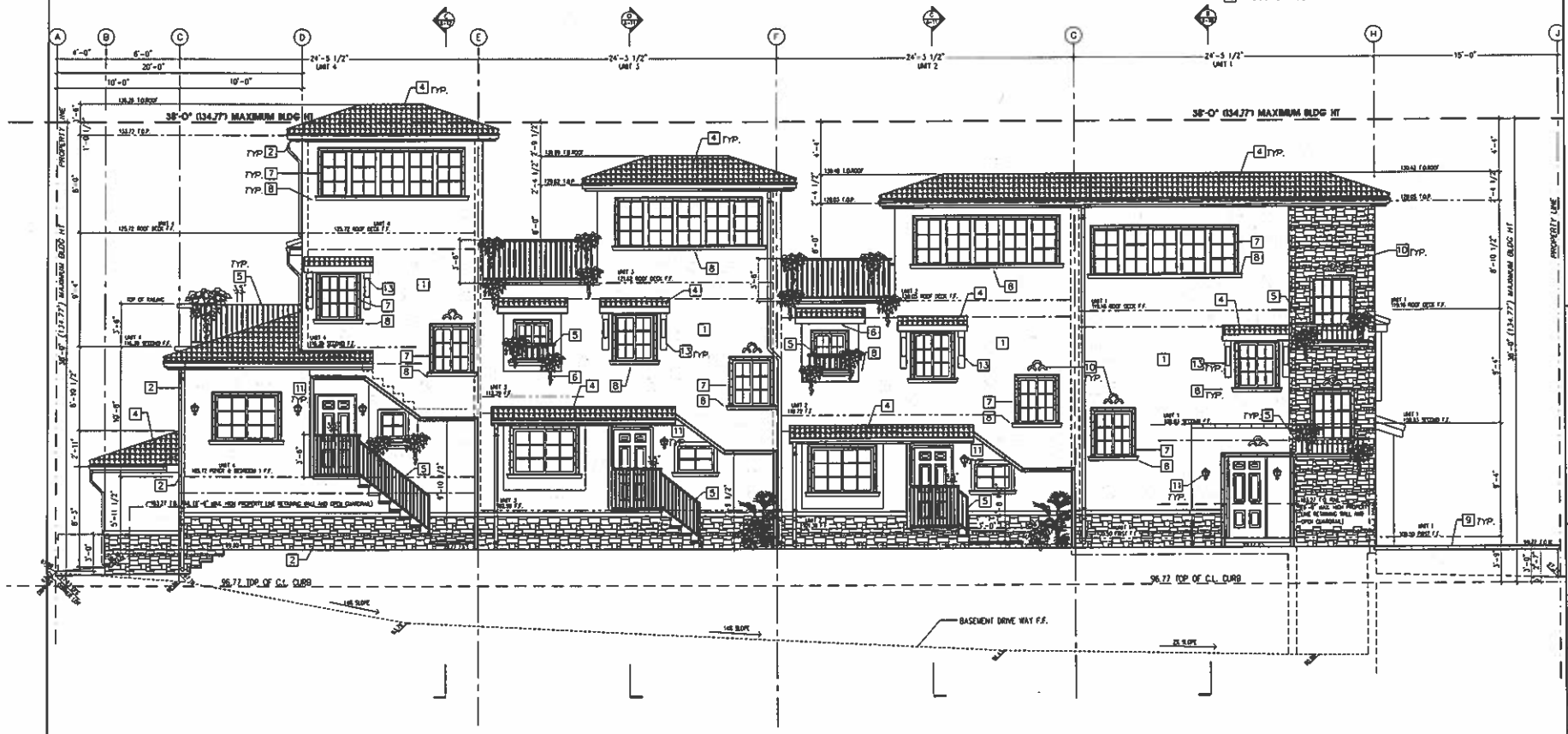


**FINISH LEGEND**

- 1 STUCCO
- 2 ROOF GUTTER & DOWN SPOUT - ALL GUTTERS AND DOWN SPOUTS TO BE ALUMINUM 4" GALVANIZED ALUMINUM WITH FACTORY PAINT FINISH, COLOR TAN TO MATCH FIELD STUCCO. FINISH SAMPLES MUST BE SUBMITTED TO ARCHITECT FOR APPROVAL.
- 3 STONE VENEER
- 4 ROOF TILE, MISSION 'S'; ICBO # 2656-P.
- 5 WROUGHT IRON RAILING
- 6 NOT USED
- 7 WINDOW TRIM - FOAM MOULDING TRIM FINISHED WITH STUCCO.
- 8 WINDOW SILL - FOAM MOULDING SILL FINISHED WITH STUCCO.
- 9 STONE CAP
- 10 HALF TERRA-COTTA DECOR
- 11 OUTDOOR WALL LIGHTING
- 12 PLANTER
- 13 WOOD BRACE



**1 EAST ELEVATION**

SCALE: 1/4" = 1'-0"

REVISIONS	
NO.	DATE

**Rodin Associates**  
 Jerry C. Rodin, Architect, A.I.A.  
 29000 S. WESTERN AVENUE, SUITE 400  
 LONG BEACH, CA 90807  
 OFFICE: (510) 832-3135  
 FAX: (510) 832-0333  
 E-MAIL: jrodin@pacbell.net

NEW 4 UNIT APARTMENT COMPLEX FOR  
**MUSSEV JAL ALLIAN**  
 P.O. BOX 18777  
 LONG BEACH, CA 90807  
 (562) 981-2699  
 SITE: 1630 E. CASSON ST.  
 LONG BEACH, CA 90807

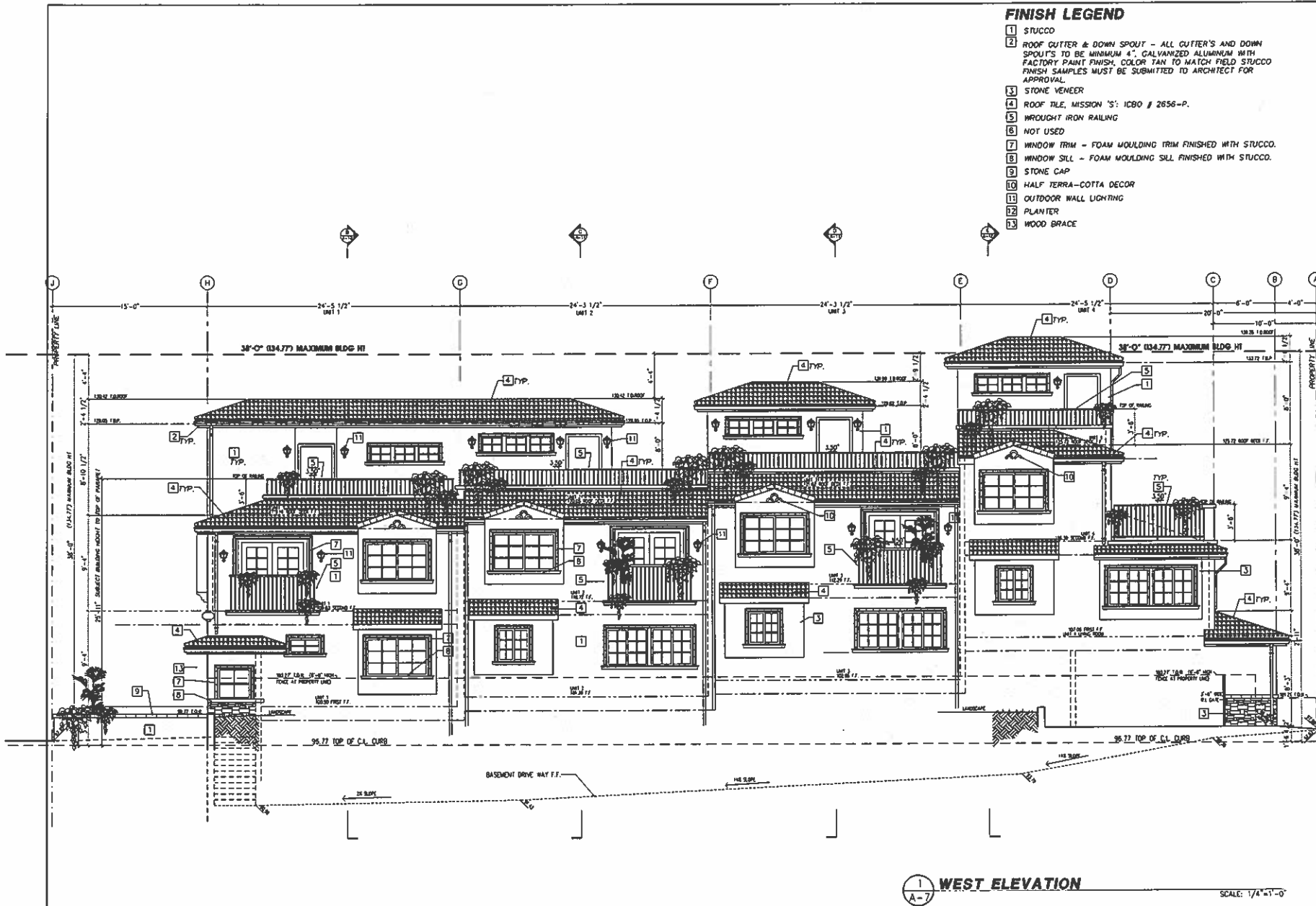
**ELEVATION**



**A-6.1**

AUGUST 13, 2010  
 RA-2008-058

RODIN ASSOCIATES, JERRY C. RODIN, ARCHITECT, A.I.A., EXPRESSLY HEREBY WAIVES ALL COPYRIGHT AND OTHER PROPERTY RIGHTS IN THESE PLANS. THESE PLANS ARE NOT TO BE REPRODUCED, COPIED, OR COPIED IN ANY FORM OR MANNER WHATSOEVER, NOR ARE THEY TO BE ASSIGNED TO A THIRD PARTY WITHOUT FIRST OBTAINING THE WRITTEN PERMISSION AND CONSENT OF, RODIN ASSOCIATES, JERRY C. RODIN, ARCHITECT, A.I.A. SHOULD UNAUTHORIZED RE-USE BY A THIRD PARTY OCCUR, RODIN ASSOCIATES, JERRY C. RODIN, ARCHITECT, A.I.A. SHALL BE HELD HARMLESS.



**FINISH LEGEND**

- 1 STUCCO
- 2 ROOF CUTTER & DOWN SPOUT - ALL CUTTER'S AND DOWN SPOUT'S TO BE MINIMUM 4", GALVANIZED ALUMINUM WITH FACTORY PAINT FINISH, COLOR TAN TO MATCH FIELD STUCCO. FINISH SAMPLES MUST BE SUBMITTED TO ARCHITECT FOR APPROVAL.
- 3 STONE VENEER
- 4 ROOF TILE, MISSION 'S'; ICBO # 2656-P.
- 5 WROUGHT IRON RAILING
- 6 NOT USED
- 7 WINDOW TRIM - FOAM MOULDING TRIM FINISHED WITH STUCCO.
- 8 WINDOW SILL - FOAM MOULDING SILL FINISHED WITH STUCCO.
- 9 STONE CAP
- 10 HALF TERRA-COTTA DECOR
- 11 OUTDOOR WALL LIGHTING
- 12 PLANTER
- 13 WOOD BRACE

NO.	DATE	REV.

**Rodin Associates**  
 Jerry C. Rodin, Architect, A.I.A.

2000 S. WESTERN AVENUE SUITE 400  
 RANCHO PALOS VERDES, CA 90275  
 OFFICE: (310) 832-3135  
 FAX: (310) 832-0333  
 E-MAIL: jrodin@bcgubert.net

NEW 4 UNITS APARTMENT COMPLEX FOR  
**MUSSEW JALALIAN**  
 P.O. BOX 18777  
 LONG BEACH, CA 90807  
 (562) 581-2699  
 SITE: 1630 E. CARSON ST.  
 LONG BEACH, CA 90807

**ELEVATION**

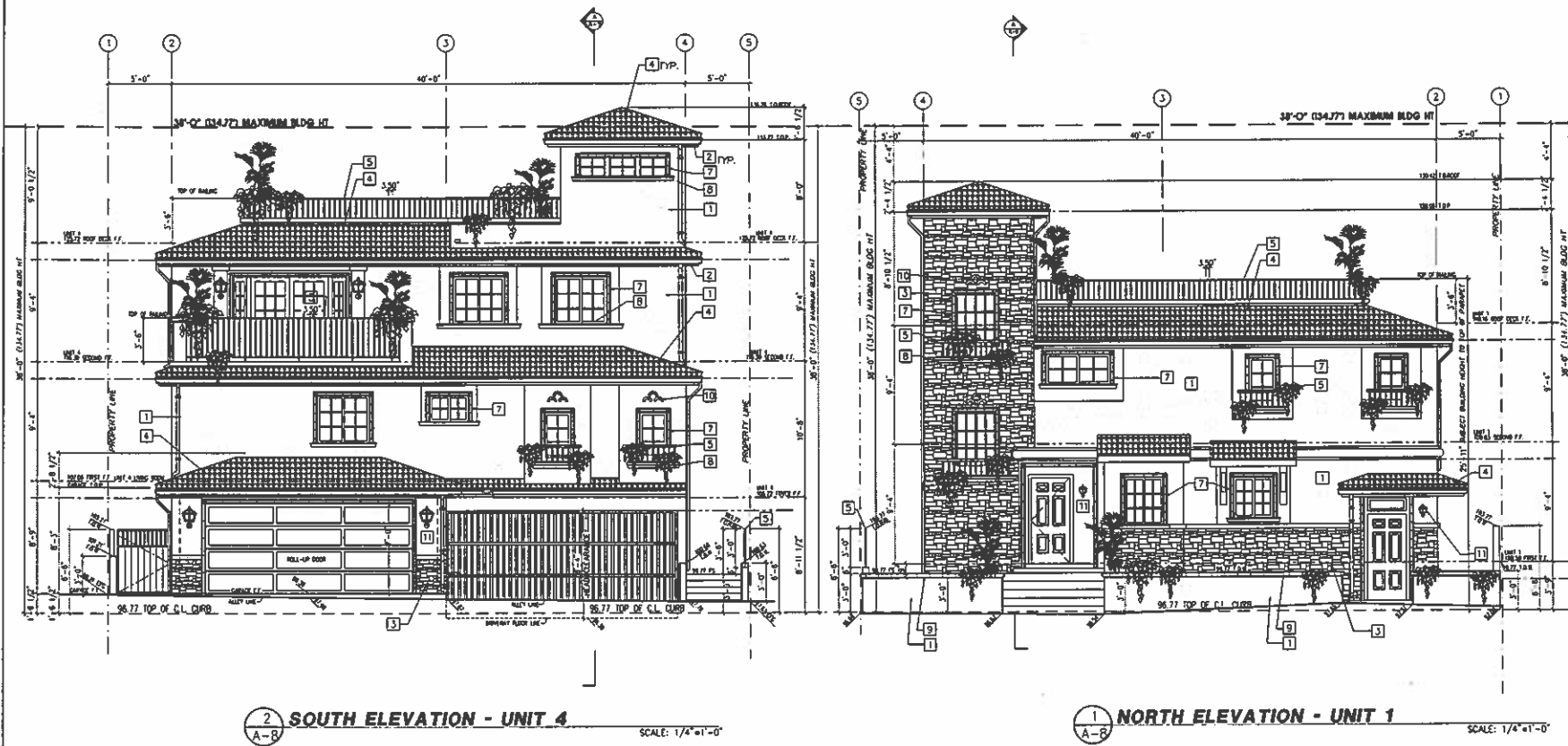
REGISTERED ARCHITECT  
 STATE OF CALIFORNIA

**A-7.1**  
 AUGUST 13, 2010  
 RA-2008-080

RODIN ASSOCIATES, JERRY C. RODIN, ARCHITECT, A.I.A., EXPRESSLY RESERVE THEIR COMMON LAW COPYRIGHT AND OTHER PROPERTY RIGHTS IN THESE PLANS. THESE PLANS ARE NOT TO BE REPRODUCED, OWNED, OR COPIED IN ANY FORM OR BY ANY MEANS, WITHOUT THE WRITTEN PERMISSION AND CONSENT OF RODIN ASSOCIATES, JERRY C. RODIN, ARCHITECT, A.I.A. SHALL UNAUTHORIZED RE-USE BY A THIRD PARTY OCCUR, RODIN ASSOCIATES, JERRY C. RODIN, ARCHITECT, A.I.A. SHALL BE HELD HARMLESS.

**FINISH LEGEND**

- 1 STUCCO
- 2 ROOF GUTTER & DOWN SPOUT - ALL GUTTERS AND DOWN SPOUTS TO BE MINIMUM 4". GALVANIZED ALUMINUM WITH FACTORY PAINT FINISH. COLOR TAN TO MATCH FIELD STUCCO. FINISH SAMPLES MUST BE SUBMITTED TO ARCHITECT FOR APPROVAL.
- 3 STONE VENEER
- 4 ROOF TILE, MISSION 'S'; ICBO # 2856-P.
- 5 WROUGHT IRON RAILING
- 6 NOT USED
- 7 WINDOW TRIM - FOAM MOULDING TRIM FINISHED WITH STUCCO.
- 8 WINDOW SILL - FOAM MOULDING SILL FINISHED WITH STUCCO.
- 9 STONE CAP
- 10 HALF TERRA-COTTA DECOR
- 11 OUTDOOR WALL LIGHTING
- 12 PLANTER
- 13 WOOD BRACE



**2 SOUTH ELEVATION - UNIT 4**  
SCALE: 1/4"=1'-0"

**1 NORTH ELEVATION - UNIT 1**  
SCALE: 1/4"=1'-0"

REVISIONS	
NO.	DATE

**Rodin Associates**  
 Jerry C. Rodin, Architect, A.I.A.  
 24000 S. WESTERN AVENUE, SUITE 408  
 RANDOLPH HILLS, VERONA, CA 94025  
 OFFICE: (310) 832-3135  
 FAX: (310) 832-0313  
 E-MAIL: jcrodin@rocinassociates.net

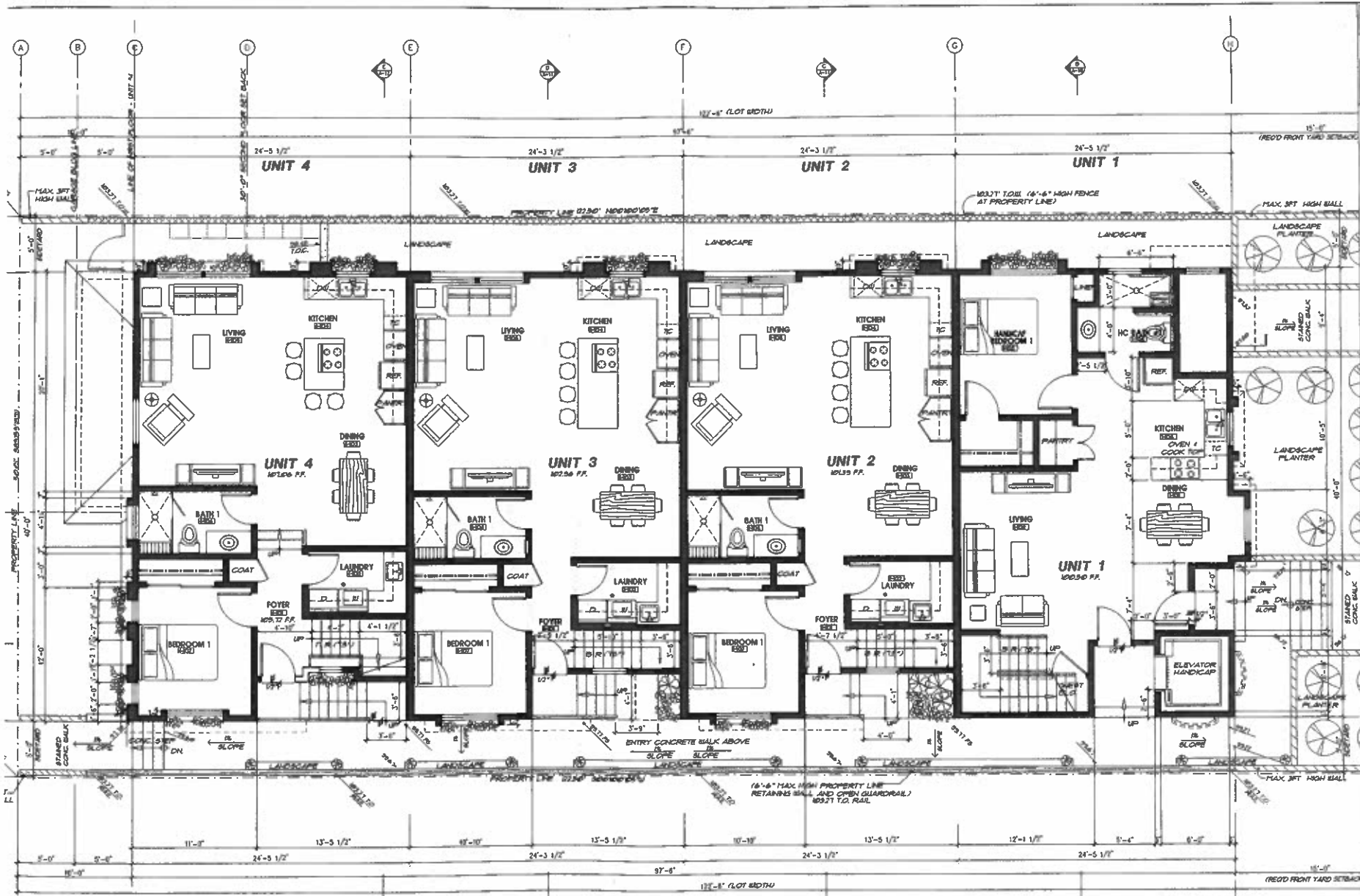
**RUSSEIN JALALLIAN**  
 P.O. BOX 18777  
 LONG BEACH, CA 90807  
 (562) 991-2699  
 SITE: 1630 E. CARSON ST.  
 LONG BEACH, CA 90807

NEW 4 UNIT APARTMENT COMPLEX FOR  
**ELEVATION**



**A-8.1**  
 AUGUST 13, 2010  
 RA-2008-060

RODIN ASSOCIATES, JERRY C. RODIN, ARCHITECT, A.I.A., EXPRESSLY RESERVE THEIR DESIGN, PATENT AND OTHER PROPERTY RIGHTS IN THESE PLANS. THESE PLANS ARE NOT TO BE REPRODUCED, COPIED, OR LOANED IN ANY FORM OR MANNER WITHOUT THE WRITTEN PERMISSION AND CONSENT OF RODIN ASSOCIATES, JERRY C. RODIN, ARCHITECT, A.I.A. ALL RIGHTS RESERVED. RE-USE BY A THIRD PARTY WITHOUT FIRST OBTAINING THE WRITTEN PERMISSION AND CONSENT OF RODIN ASSOCIATES, JERRY C. RODIN, ARCHITECT, A.I.A. SHALL BE HELD HARMLESS.



- WALL LEGEND:**
- 6" CONCRETE WALL
  - 6" STUD WALL, STUCCO FINISH
  - 8" BLOCK WALL
  - 6"-6" HIGH FENCE FROM AVERAGE CENTER TOP OF CURB
  - 3'-0" MAX. HIGH PLANTER
  - 4'-4" HIGH RETAINING WALL AND OPEN QUADRAL FROM

**1 FIRST FLOOR PLAN** SCALE: 1/4"=1'-0"

REVISIONS	
DATE	BY

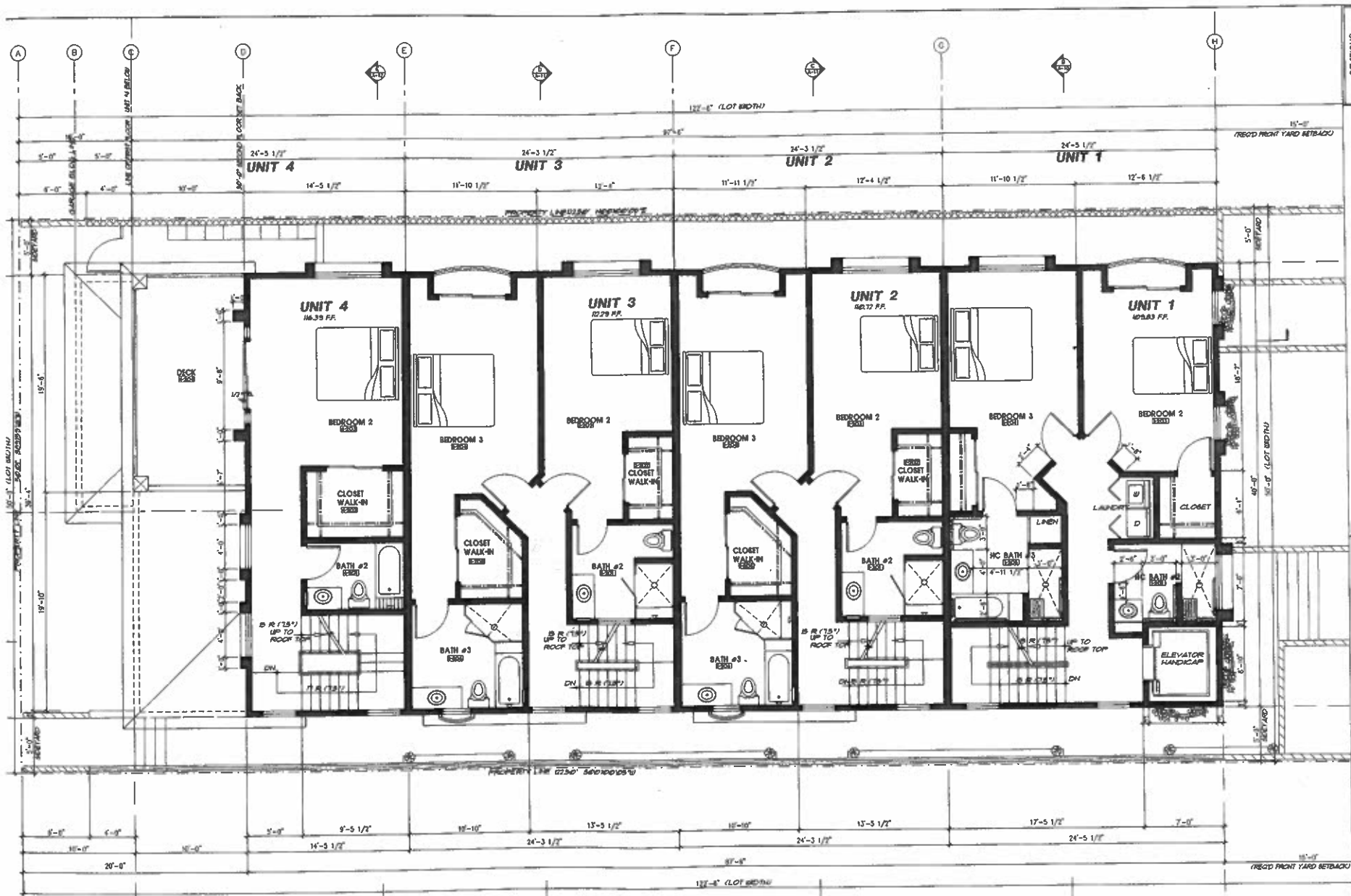
**Rodin Associates**  
 Jerry C. Rodin, Architect, A.A.A.  
 20000 S. WESTERN AVENUE, SUITE 408  
 RANCHO PALOS VERDES, CA 90275  
 OFFICE: (310) 832-3135  
 FAX: (310) 832-3135  
 E-MAIL: jrodin@rodinassociates.net

NEW 4 UNITS APARTMENT COMPLEX FOR:  
**HUSSEIN JALALLIAN**  
 P.O. BOX 187774 90807  
 LOS ANGELES, CA 90087  
 (323) 987-2899  
 SITE: 1630 E. CARSON ST.  
 LONG BEACH, CA 90807

**FIRST FLOOR PLAN**



**A-2**  
 MAY 3, 2010



- WALL LEGEND:**
- 6" CONCRETE WALL
  - 6" STUD WALL, STUCCO FINISH
  - 6" BLOCK WALL
  - 6"-6" HIGH FENCE FROM AVERAGE CENTER TOP OF CURB
  - 3"-6" MAX. HIGH PLANTER
  - 6"-6" HIGH RETAINING WALL AND OPEN QUADRAL FROM

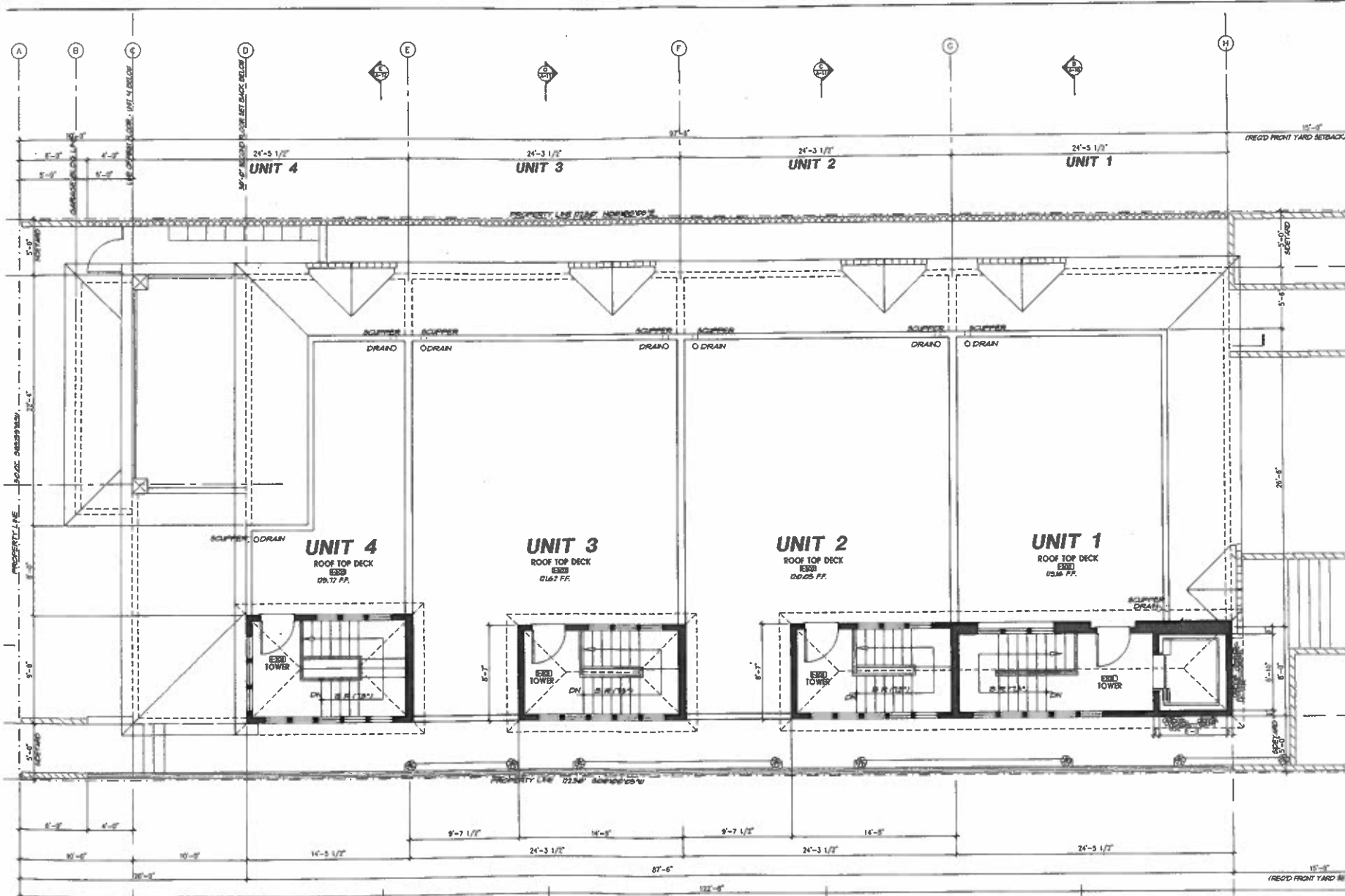
**1 SECOND FLOOR PLAN** SCALE: 1/4"=1'-0"

REVISIONS	
NO.	DATE

**Rodin Associates**  
 Jerry C. Rodin, Architect, A.I.A.  
 28000 S. WESTERN AVENUE, SUITE 408  
 RANCHO PALOS VERDES, CA 90275  
 OFFICE: (310) 832-3135  
 FAX: (310) 832-3033  
 E-MAIL: jcr@rodinassociates.com

NEW 4 UNITS APARTMENT COMPLEX FOR:  
**HUSSEIN JALALLIAN**  
 P.O. BOX 18777 90807  
 LONG BEACH, CA  
 (562) 981-2699  
 SITE: 1630 E. CARSON ST.  
 LONG BEACH, CA 90807





REVISIONS	
NO.	DATE
1	07/10/10

29000 S. WESTERN AVENUE, SUITE 108  
 LONG BEACH, CALIFORNIA 90875  
 OFFICE: (310) 832-3135  
 FAX: (310) 832-0333  
 E-MAIL: jerry@rodinassociates.net

**Rodin Associates**  
 Jerry C. Rodin, Architect, A.I.A.

NEW 4 UNITS APARTMENT COMPLEX FOR:  
 HUSSEIN ALALLIAN  
 P.O. BOX 18777  
 LONG BEACH, CA 90807  
 (562) 961-2699  
 SITE: 1630 E. CARSON ST.  
 LONG BEACH, CA 90807

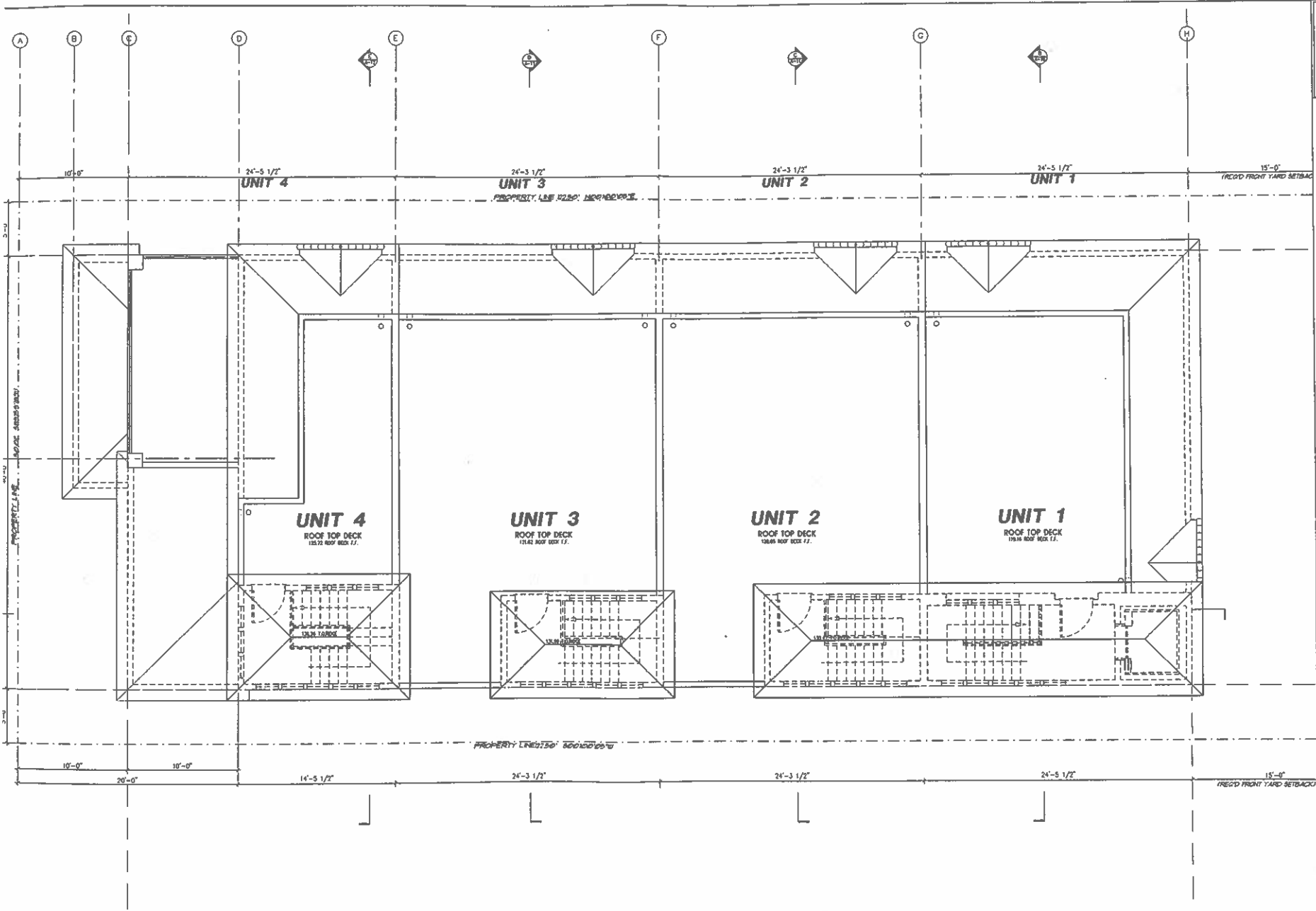
**TOWER AND  
 ROOF DECK  
 FLOOR PLAN**



**A-4**  
 MAY 3, 2010

**WALL LEGEND:**  
 [Symbol] 6" CONCRETE WALL  
 [Symbol] 6" STUD WALL, STUCCO FINISH  
 [Symbol] 6" BLOCK WALL  
 [Symbol] 6'-6" HIGH FENCE FROM AVERAGE CENTER TOP OF CURB  
 [Symbol] 3'-0" MAX. HIGH PLANTER  
 [Symbol] 6'-6" HIGH RETAINING WALL AND OPEN QUADRANT FROM  
 EXISTING EXTERIOR 100' PG. FLOOR

**TOWER / ROOF DECK FLOOR PLAN**  
 SCALE: 1/4"=1'-0"  
 [North Arrow]



REVISIONS	
NO.	DATE

**Rodin Associates**  
 Jerry C. Rodin, Architect, A.I.A.  
 29000 S. WESTERN AVENUE, SUITE 408  
 RANCHO PALOS VERDES, CA 90275  
 OFFICE: (310) 832-0335  
 CELL: (310) 832-0335  
 E-MAIL: jrodin@rodinassociates.com

NEW 4 UNITS APARTMENT COMPLEX PDH  
 NUSSEIN JALALLIAN  
 P.O. BOX 18777 90807  
 LOS ANGELES, CA 90040  
 (562) 991-8888  
 SITE: 1630 E. CARSON ST.  
 LONG BEACH, CA 90807

**ROOF PLAN**

**A-5**  
 MAY 3 2010

1 ROOF PLAN  
 A 5

SCALE: 1/4"=1'-0"